



Every Child. Every Day. For a Better Tomorrow.

Charlotte-Mecklenburg Schools

Student Enrollment

Fall 2014

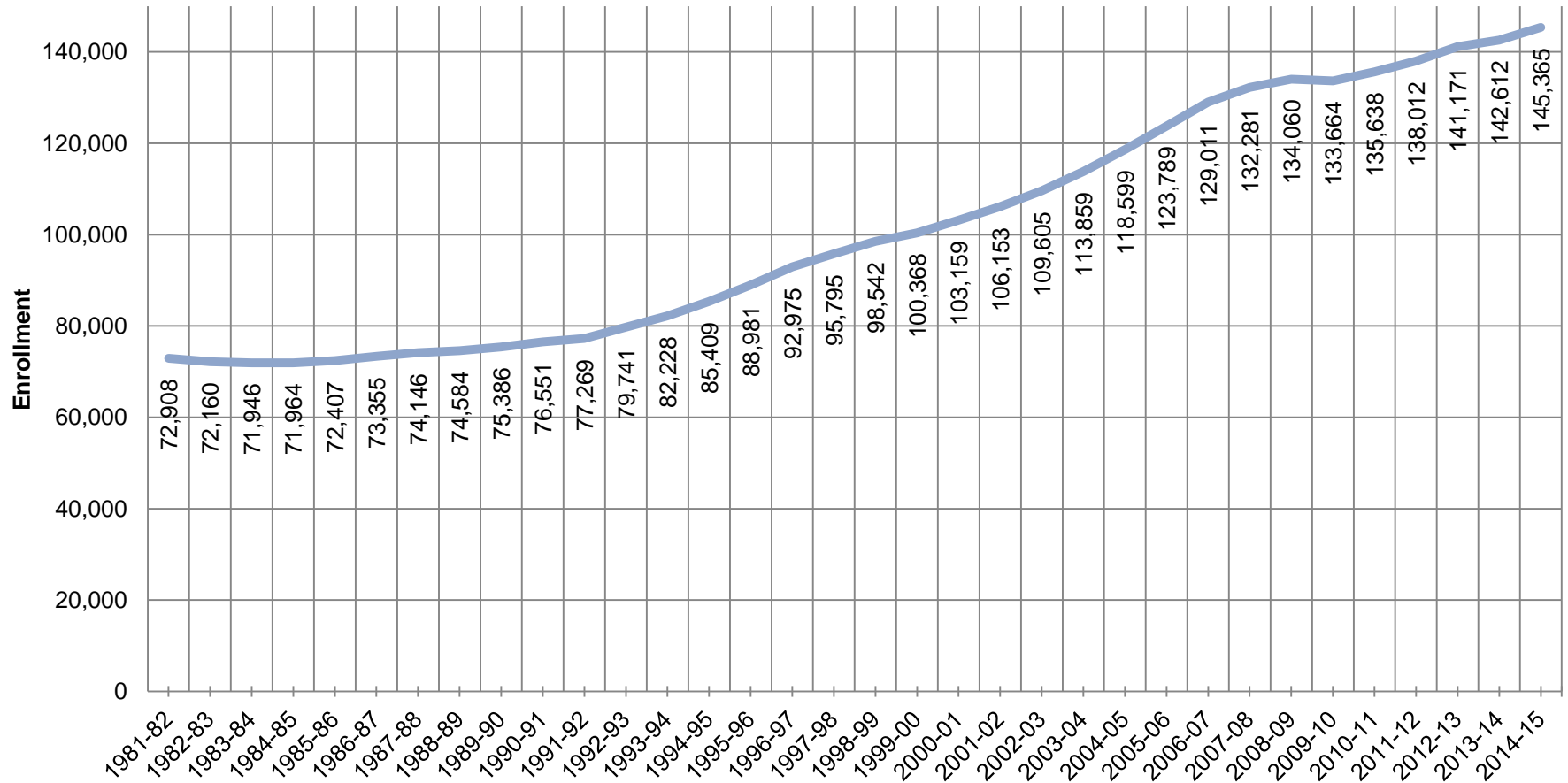


Charlotte-Mecklenburg Schools

Student Assignment

- Student assignment outlined in Board policy JCA, includes Board guiding principles.
- All students guaranteed a home school based on residence, regardless of school overcrowding (no capping)
- Magnet and other school options (i.e. Career, Technical Education) apply and assigned through lottery
- Attendance boundaries changed when new schools constructed, comprehensive student assignment review in six-year intervals, or community boundary request process

Charlotte-Mecklenburg Schools 1981 - 2014 District Enrollment



Note: For 2009-10, the entry age for kindergarten was moved back from October 16th to August 31st resulting in a one-time loss of approximately 1,300 students.

Source: Charlotte-Mecklenburg Schools, Planning Services Department.

Enrollment Growth 2014 (Greatest Gain)

School	Actual 20th Day Non SCEC 2013	Actual Total Non SCEC Enrollment 20th Day 2014	Difference Actual 2014 Non SCEC 20th Day and 2013 Non SCEC 20th Day
Garinger High	1389	1682	293
South Mecklenburg High	2669	2886	217
Mallard Creek High	2207	2419	212
William Amos Hough High	2189	2396	207
Ardrey Kell High	2468	2674	206
North Mecklenburg High	1707	1851	144
West Mecklenburg High	1849	1991	142
Albemarle Road Elementary	1175	1307	132
Community House Middle	1630	1751	121
Berry Academy Of Technology High	1578	1684	106
West Charlotte High	1616	1719	103
Independence High	2207	2309	102

Sample South Mecklenburg County School Enrollments SY2014

High Schools*:

- South Mecklenburg; 2,913 students /5 mobiles
- Ardrey Kell; 2,701 students /4 mobiles

Middle Schools*:

- Community House; 1,750 students /10 mobiles
- JM Robinson; 1,101 students /0 mobiles

Elementary Schools*:

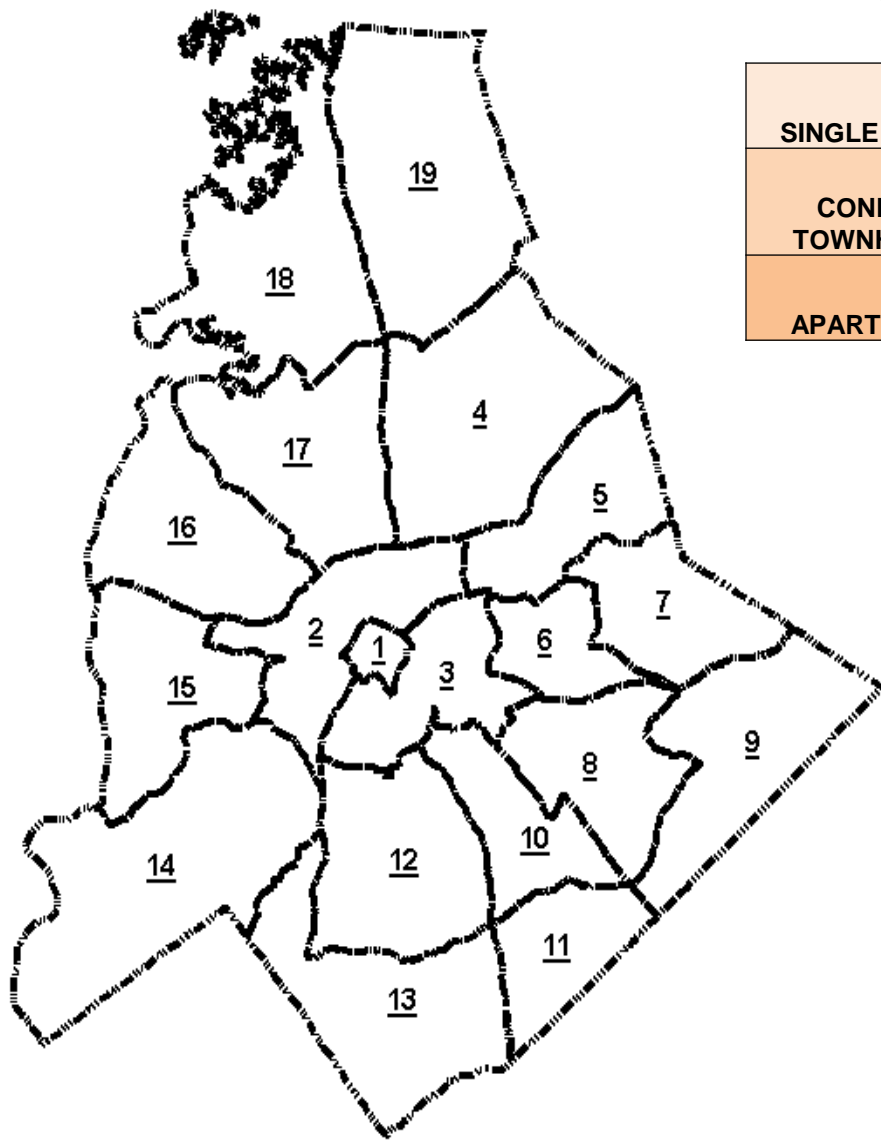
- Polo Ridge; 1,036 students /8 mobiles
- Hawk Ridge; 881 students /11 mobiles
- Elon Park; 1,115 students /15 mobiles
- Ballantyne; 850 students /2 mobiles

*Core classroom totals vary by school.

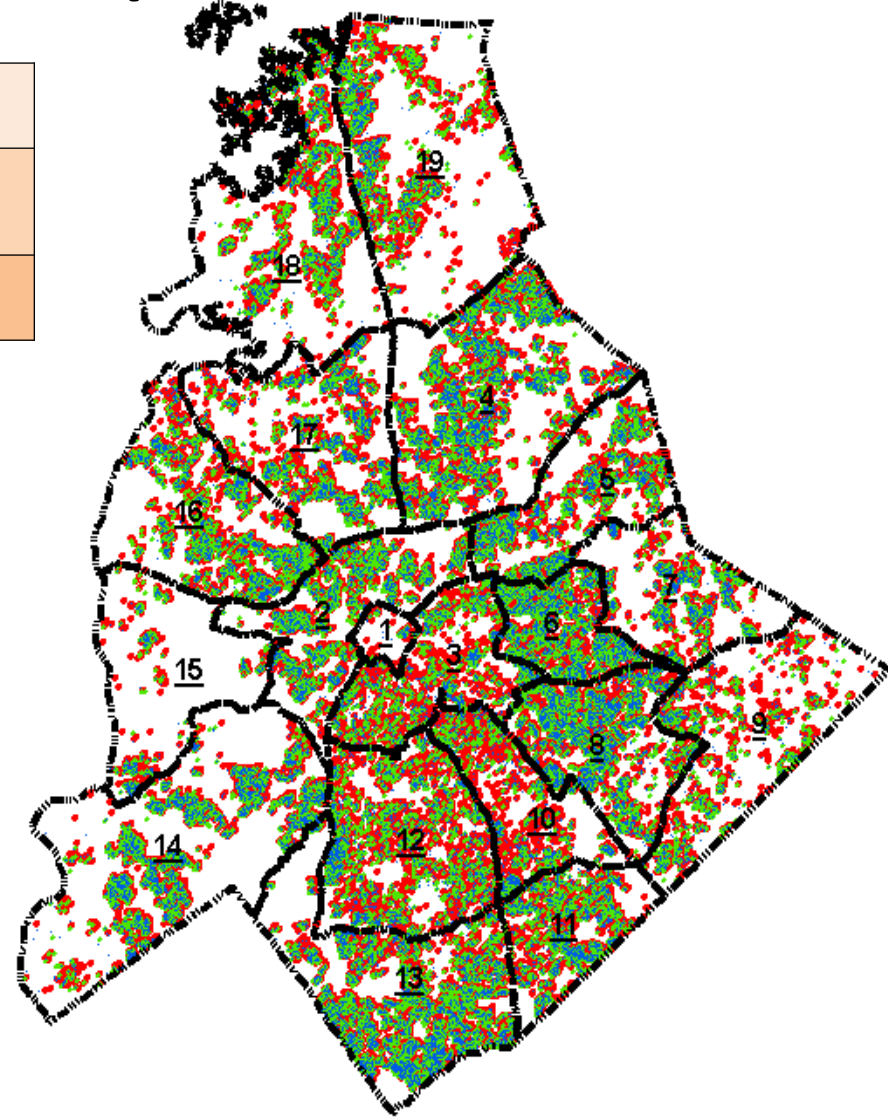
Charlotte and Town Zoning (Process Summary)

- Review zoning petitions for City of Charlotte and towns within Mecklenburg County on monthly basis
- A yield factor is determined based on type of residence (single family, multi-family, or owner condo)
- Yield factors for each use is updated annually, determined for each planning area (common area defined by city planning)
- Report for each rezoning petition developed, computing the total number students generated by the rezoning and the per student cost for capital expansion
- Ask for contribution for future construction to accommodate additional growth (voluntary, not mandatory)

Rezoning Requests

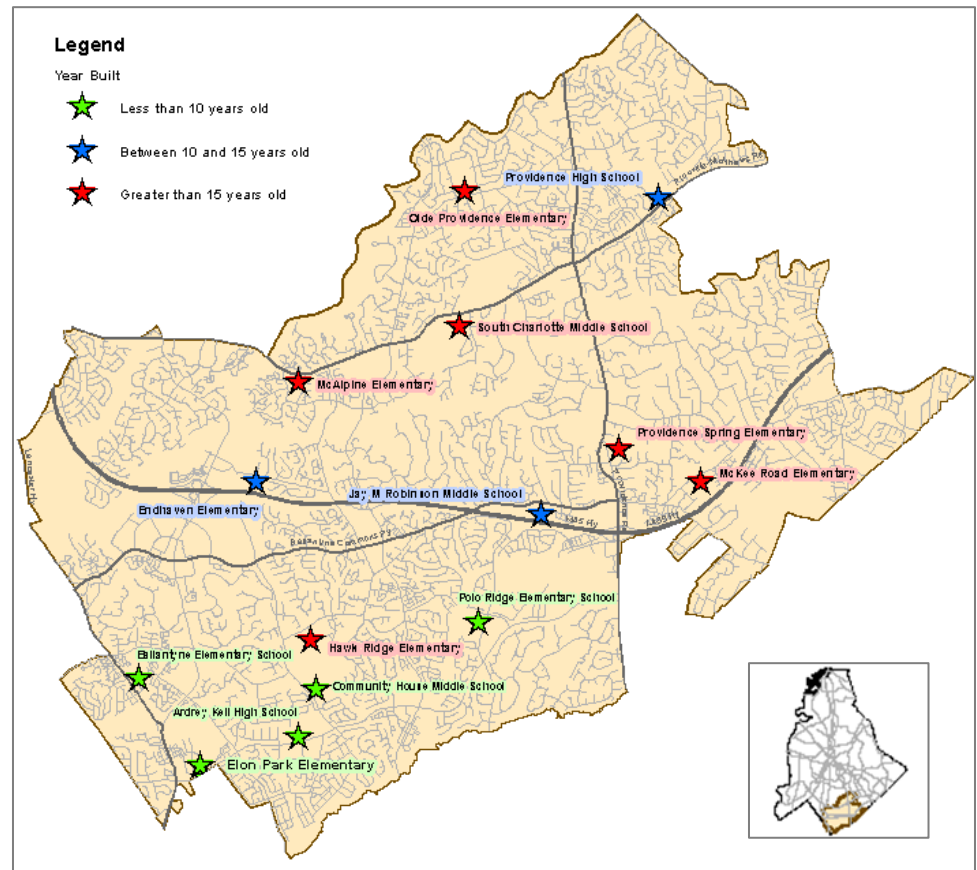


SINGLE FAMILY
CONDOS / TOWNHOMES
APARTMENTS



Schools Built

- 2008, Ballantyne ES
- 2008, Elon Park ES
- 2008, Polo Ridge ES
- 2006, Ardrey Kell HS
- 2005, Community House MS
- 2003, Endhaven ES
- 2002, Providence Spring ES
- 2002, JM Robinson MS
- Others schools



164 schools

Elementary schools
91 schools

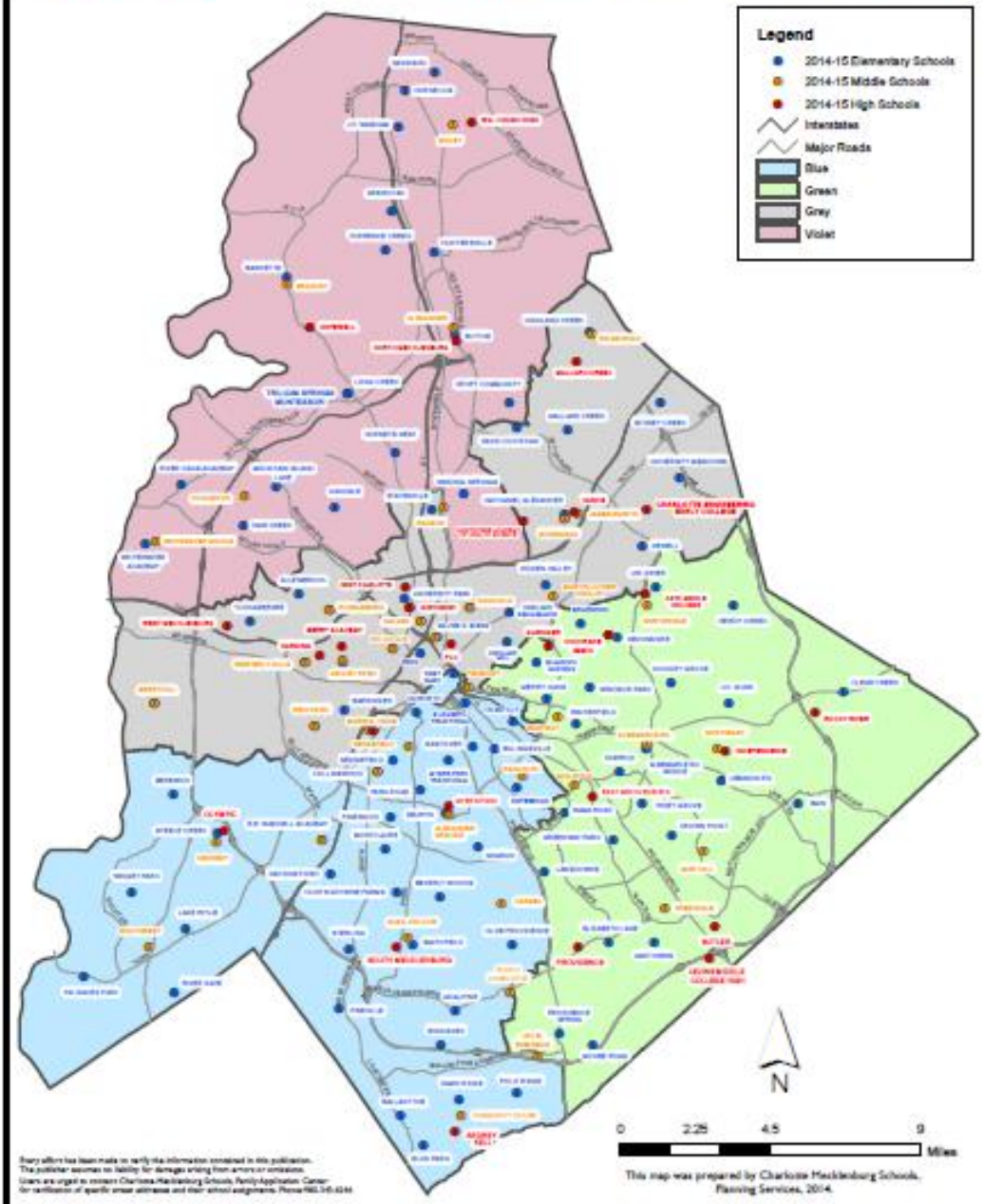
Middle schools
39 schools

High schools
31 schools

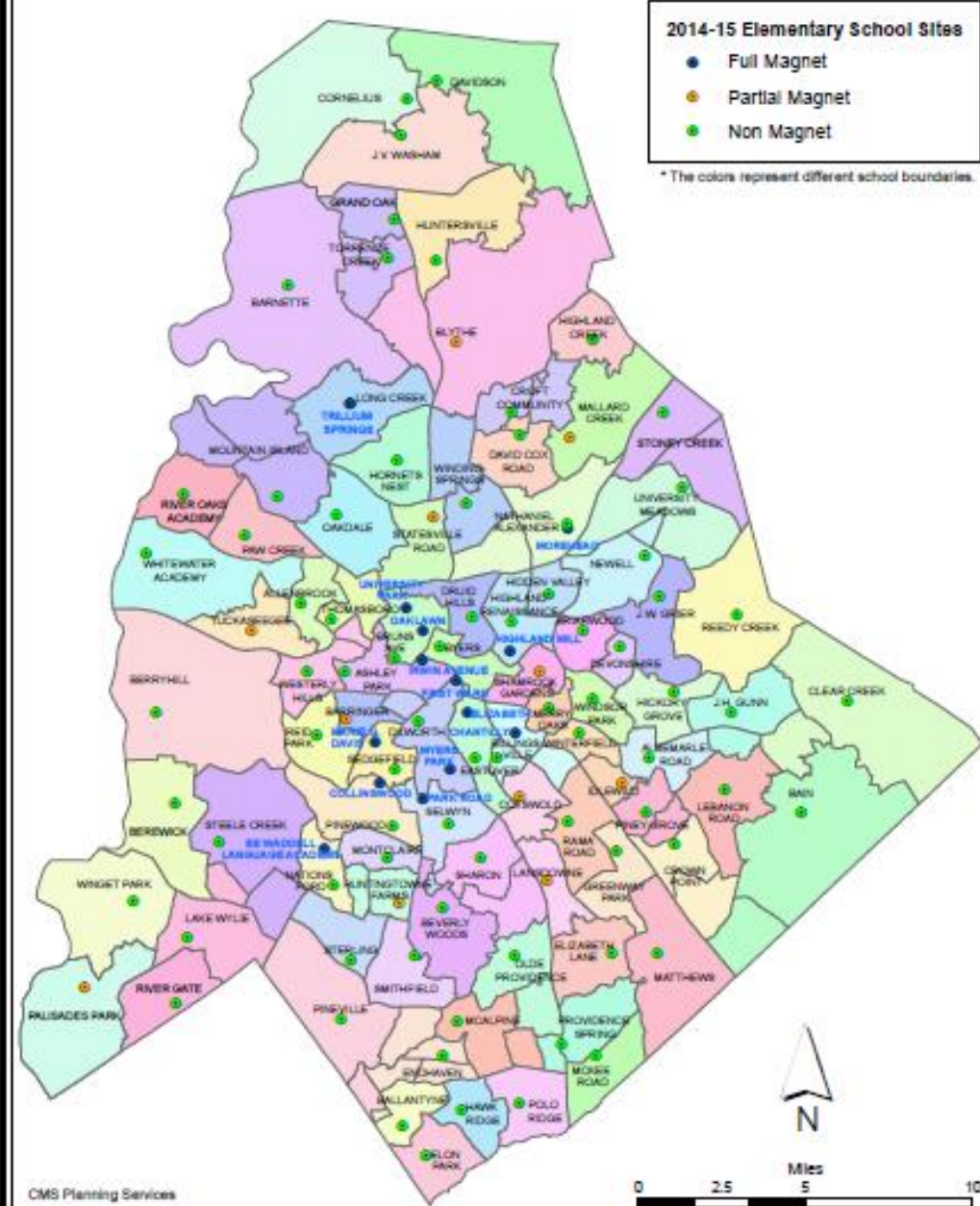
Special programs
3 schools



CHARLOTTE-MECKLENBURG SCHOOLS 2014-15 ELEMENTARY, MIDDLE AND HIGH SCHOOLS



CHARLOTTE-MECKLENBURG SCHOOLS
2014-15 ELEMENTARY SCHOOL BOUNDARIES

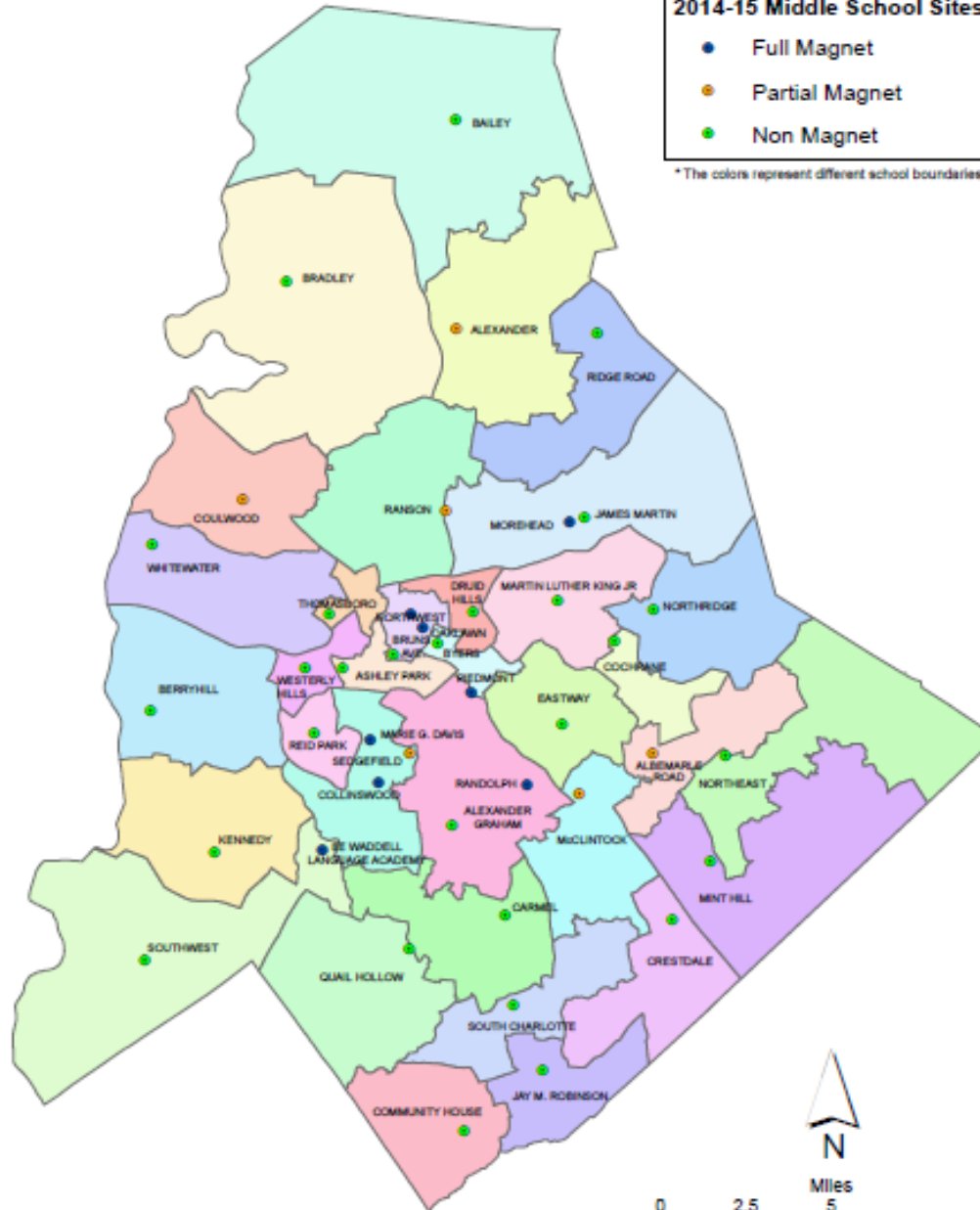


CHARLOTTE-MECKLENBURG SCHOOLS 2014-15 MIDDLE SCHOOL BOUNDARIES

2014-15 Middle School Sites

- Full Magnet
- Partial Magnet
- Non Magnet

* The colors represent different school boundaries.



CHARLOTTE-MECKLENBURG SCHOOLS 2014-15 HIGH SCHOOL BOUNDARIES

2014-15 High School Sites

- Full Magnet
- Partial Magnet
- Non Magnet

* The colors represent different school boundaries.

