

VICINITY MAP  
NTS

DEVELOPER

ASPEN HEIGHTS PARTNERS  
8008 CORPORATE CENTER DRIVE, SUITE #201  
CHARLOTTE, NC 28226

SITE AREA:

GROSS SITE ACREAGE: ±23.53 AC  
RIGHT-OF-WAY DEDICATION: ±0.61 AC  
NET SITE ACREAGE: ±22.92 AC

PID:

02903112, 02903122, 02903125, 02903124

EXISTING ZONING:

R-12(CD), R-3

PROPOSED ZONING:

R-12MF(CD)

EXISTING USE:

VACANT

PROPOSED USE:

MULTI-FAMILY

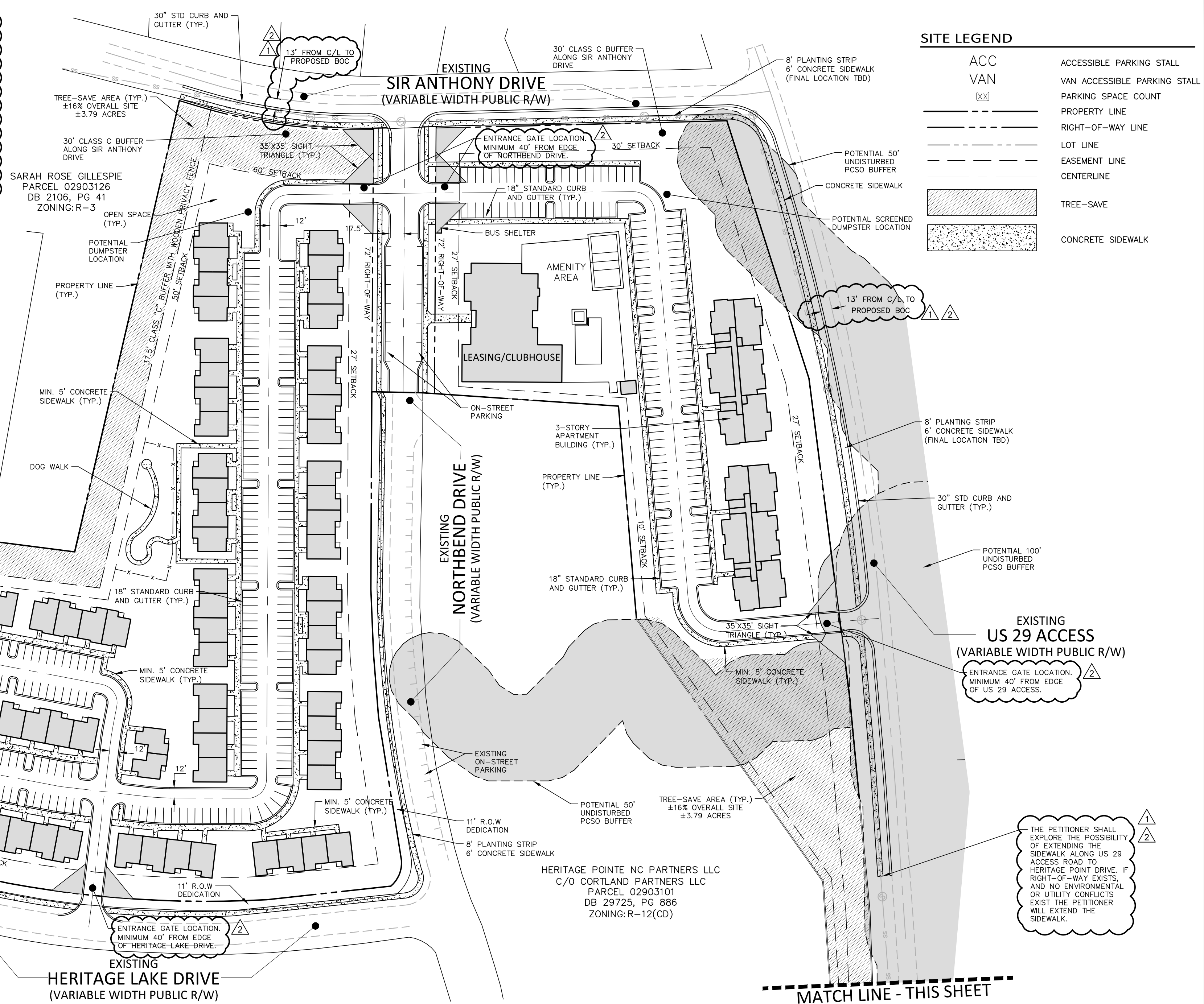
TREE SAVE AREA REQUIRED:

3.53 AC (23.57 AC x 15%)

TREE SAVE AREA PROVIDED:

3.79 AC

REZONING CASE NUMBER: 2019-144



SITE LEGEND	
ACC VAN	ACCESSIBLE PARKING STALL
XX	VAN ACCESSIBLE PARKING STALL
---	PARKING SPACE COUNT
---	PROPERTY LINE
---	RIGHT-OF-WAY LINE
---	LOT LINE
---	EASEMENT LINE
---	CENTERLINE
---	TREE-SAVE
---	POTENTIAL 50' UNDISTURBED PCSO BUFFER
---	POTENTIAL SCREENED DUMPSTER LOCATION
---	CONCRETE SIDEWALK

The John R. McAdams Company, Inc.  
2905 Meridian Parkway  
Durham, NC 27713

phone 919. 361. 5000  
fax 919. 361. 2269  
license number: C-0293, C-187

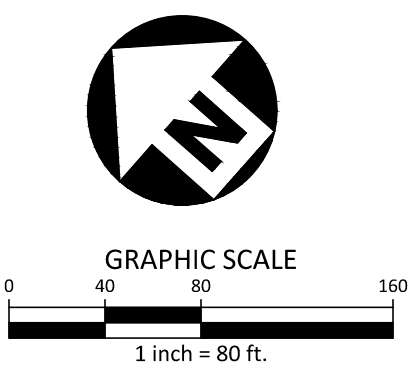
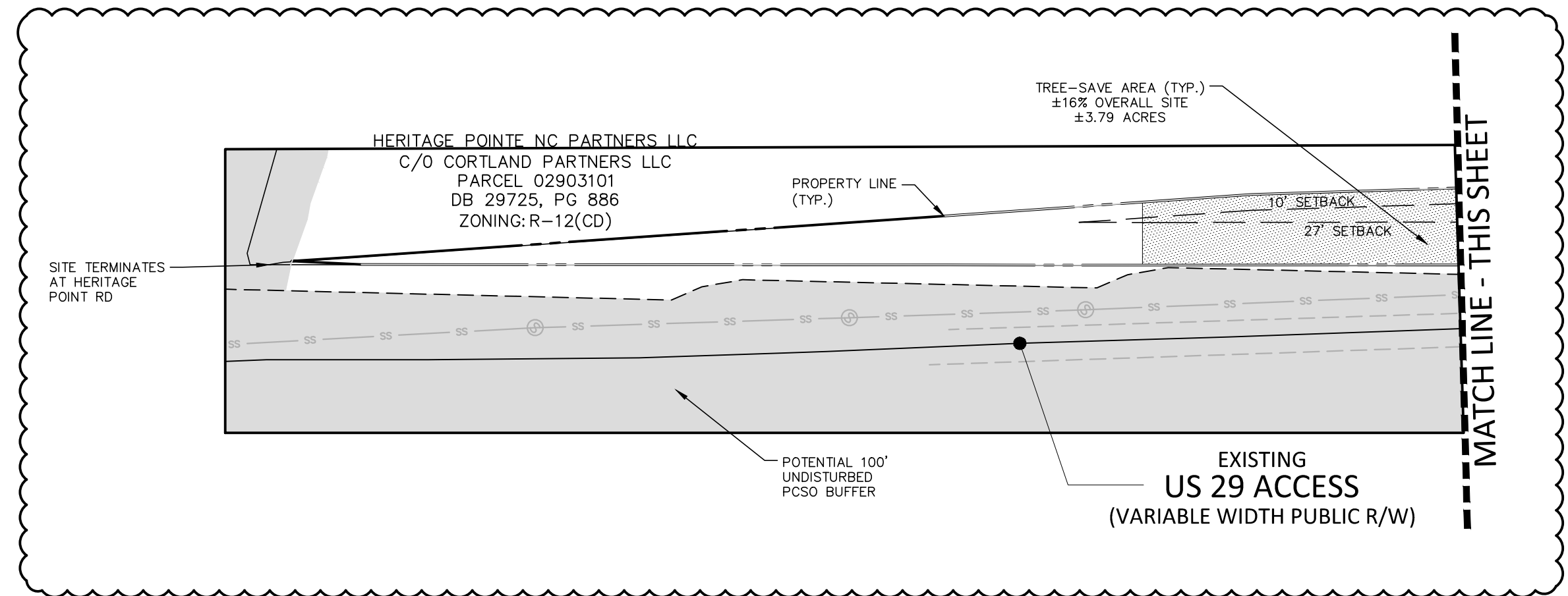
www.mcadamsco.com

CLIENT

ASPEN HEIGHTS PARTNERS  
8008 CORPORATE CENTER DRIVE, SUITE #201  
CHARLOTTE, NC 28226  
PHONE: 704. 255. 5942

ASPEN  
HEIGHTS  
—PARTNERS—

UNCC HERITAGE  
REZONING CONCEPT PLAN  
NORTHBEND DR. & HERITAGE LAKE DR.  
CHARLOTTE, NORTH CAROLINA, 28262



SEE REZONING NOTES ON SHEET RZ-2

PRELIMINARY DRAWING - NOT RELEASED FOR CONSTRUCTION

REVISIONS			
NO.	DATE	PER	1ST SUBMITTAL COMMENTS
1	12.12.2019	PER	1ST SUBMITTAL COMMENTS
2	01.22.2020	PER	2ND SUBMITTAL COMMENTS

PLAN INFORMATION	
PROJECT NO.	AHP-19010
FILENAME	AHP19010-R21
CHECKED BY	
DRAWN BY	AJB
SCALE	1"=80'
DATE	09.18.2019
SHEET	

REZONING PLAN  
**RZ-1**





[www.mcadamsco.com](http://www.mcadamsco.com)

**ASPEN**  
HEIGHTS  
—PARTNERS—

# RZ-2