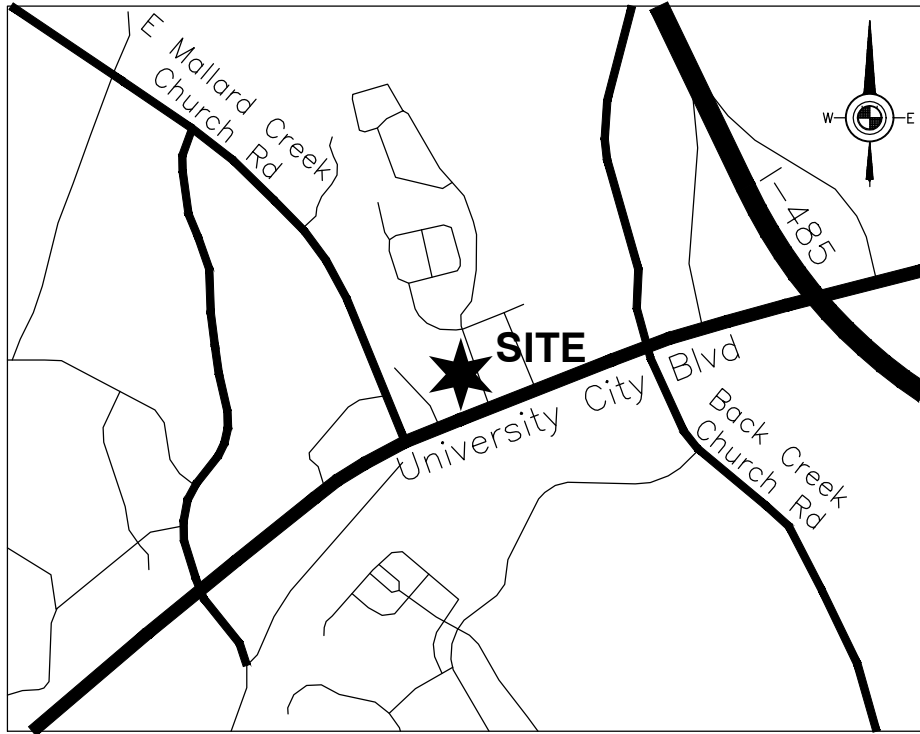
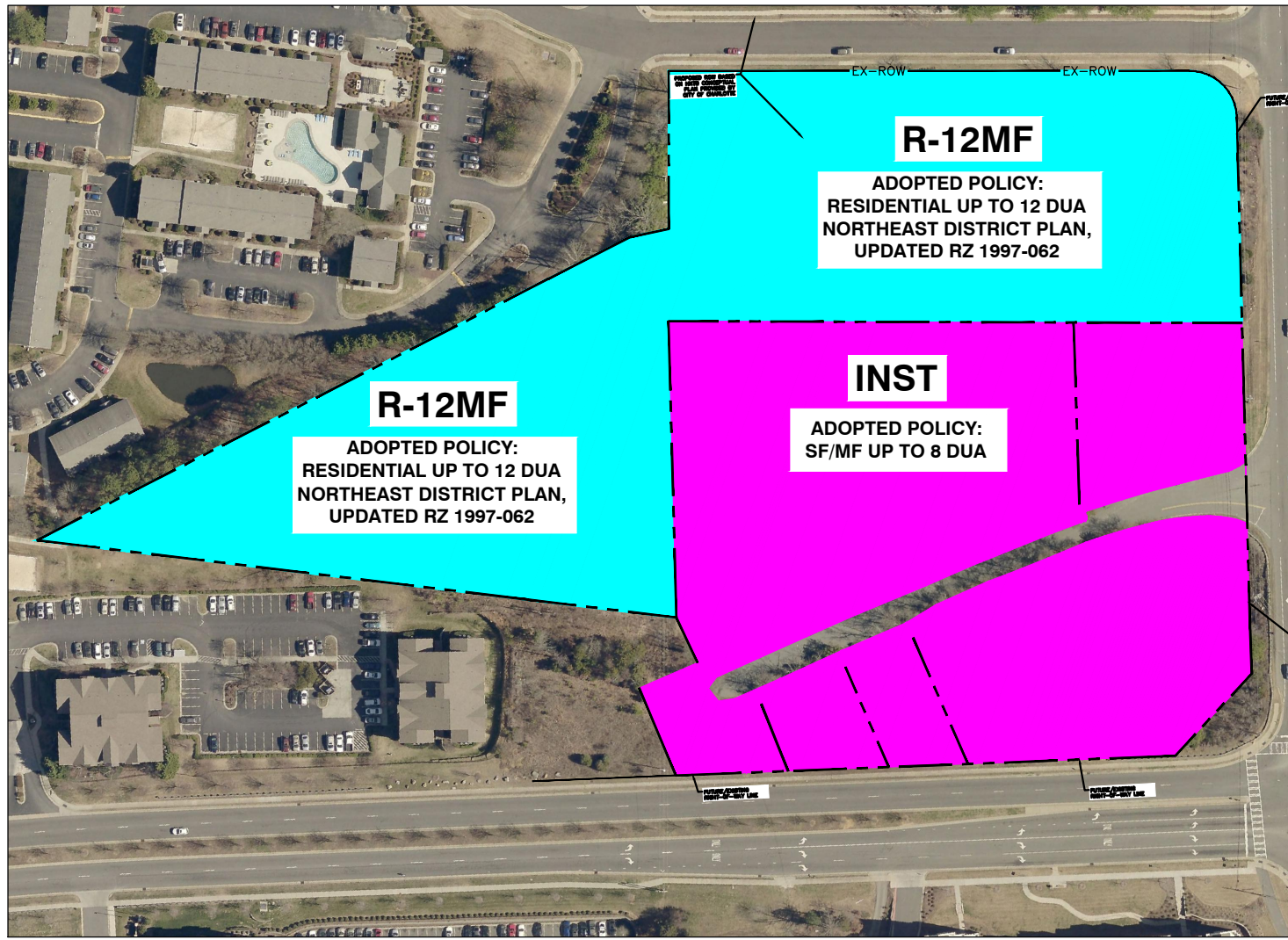


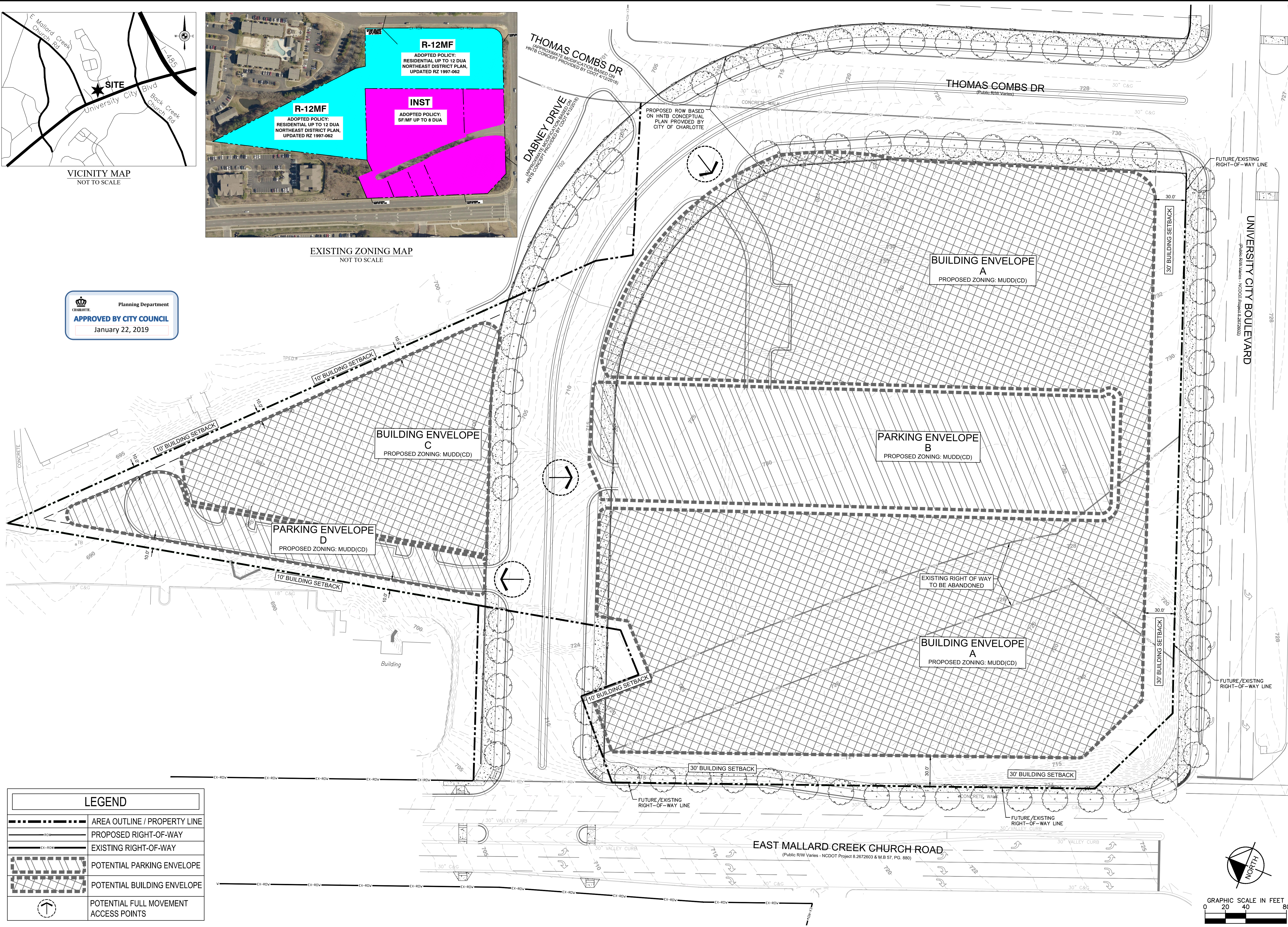
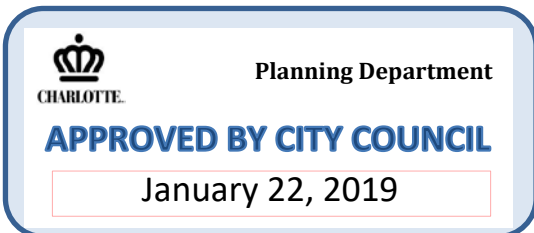
Plotted By: Streib, Kelsey Sheet Set: kha Layout: RZ - 1 TECHNICAL DATA SHEET December 20, 2018 12:52:28pm K:\CHL PROJ\01981801 Fountain Marlyn\Resoning - 007\CAD\PlanSheets\RZ-1 - TECHNICAL DATA SHEET - w0.Parcels.dwg
This document, together with the concepts and designs presented herein, is intended only for the specific purpose and client for which it was prepared. Reuse of and improper reliance on this document without written authorization and adaptation by Kimley-Horn and Associates, Inc. shall be without liability to Kimley-Horn and Associates, Inc.



VICINITY MAP
NOT TO SCALE



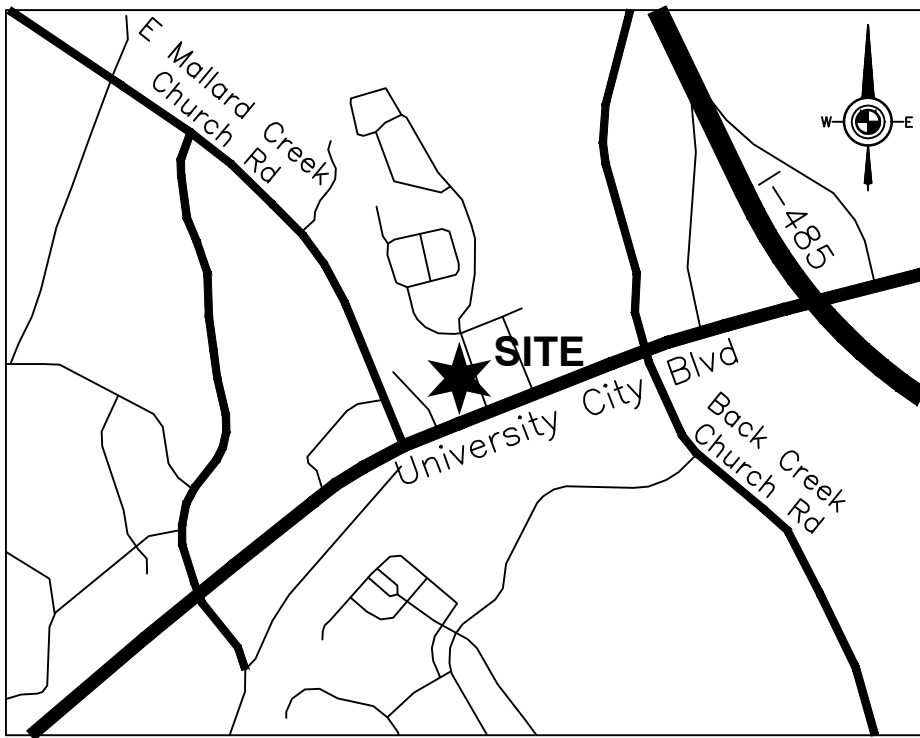
EXISTING ZONING MAP
NOT TO SCALE



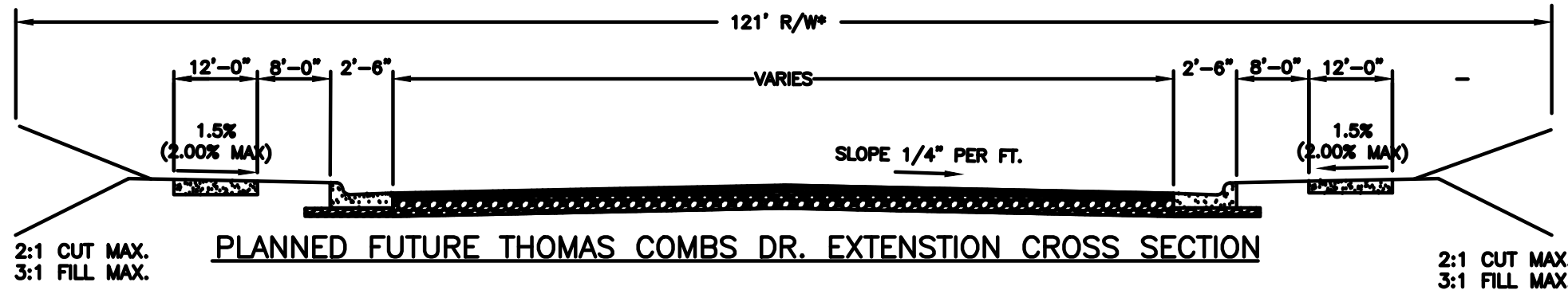
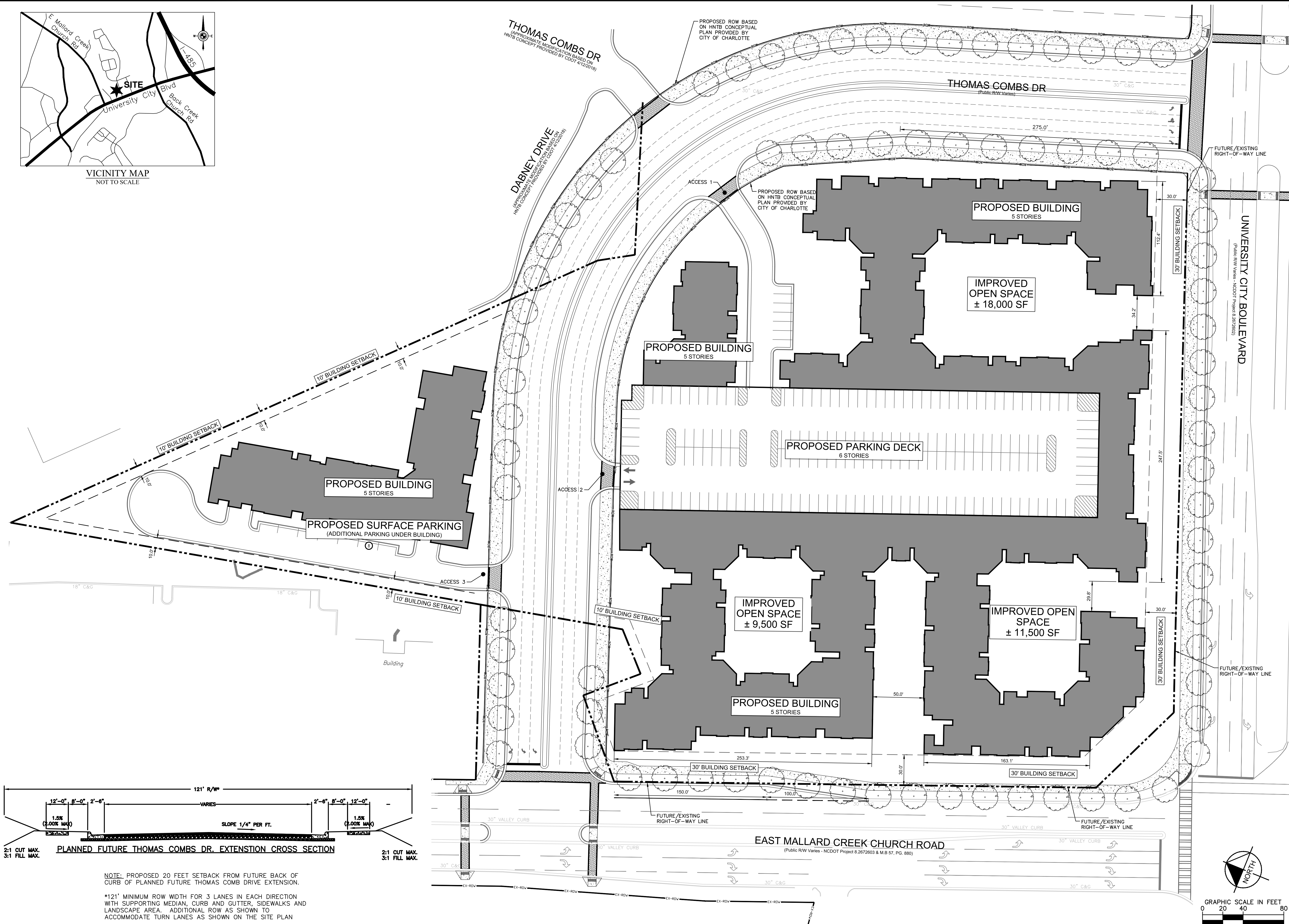
LEGEND	
	AREA OUTLINE / PROPERTY LINE
	PROPOSED RIGHT-OF-WAY
	EXISTING RIGHT-OF-WAY
	POTENTIAL PARKING ENVELOPE
	POTENTIAL BUILDING ENVELOPE
	POTENTIAL FULL MOVEMENT ACCESS POINTS

KHA PROJECT 019818007	DATE 12/20/2018	SCALE AS SHOWN	DESIGNED BY KH	DRAWN BY CH	CHECKED BY JH	REVISIONS	DATE	BY							
2018-075						REZONING PETITION NO. 2018-									
TECHNICAL DATA SHEET						NORTH CAROLINA									
MARLYNN HOUSING DEVELOPMENT PREPARED FOR FOUNTAIN						CITY OF CHARLOTTE									
SHEET NUMBER						RZ - 1									
Kimley»Horn						© 2018 KIMLEY-HORN AND ASSOCIATES, INC. 200 SOUTH TRYON ST, SUITE 200, CHARLOTTE, NC 28202 PHONE: 704-333-5131 WWW.KIMLEY-HORN.COM NC LICENSE #F-0102									
PRELIMINARY DOCUMENT															

Plotted By: Strabridges, Kelsey Sheet Set: kha Layout: RZ - 2 SITE PLAN December 20, 2018 02:23:50pm K:\CHL-PRJ\019818010 Fountain Marlynn Reporting - 007\CAD\PlanSheets\RZ-2 - SITE PLAN-CL MAINTAINED.dwg
This document, together with the concepts and designs presented herein, is intended only for the specific purpose and client for which it was prepared. Reuse of and improper reliance on this document without written authorization and adaptation by Kimley-Horn and Associates, Inc. shall be without liability to Kimley-Horn and Associates, Inc.



VICINITY MAP
NOT TO SCALE



NOTE: PROPOSED 20 FEET SETBACK FROM FUTURE BACK OF CURB OF PLANNED FUTURE THOMAS COMB DRIVE EXTENSION.

*121' MINIMUM ROW WIDTH FOR 3 LANES IN EACH DIRECTION WITH SUPPORTING MEDIAN, CURB AND GUTTER, SIDEWALKS AND LANDSCAPE AREA. ADDITIONAL ROW AS SHOWN TO ACCOMMODATE TURN LANES AS SHOWN ON THE SITE PLAN

KHA PROJECT 019818007		DATE 12/20/2018		SCALE AS SHOWN		DESIGNED BY KH		DRAWN BY CH		CHECKED BY JH	
2018-075											
ILLUSTRATIVE SITE PLAN						REZONING PETITION NO. 2018-					
MARLYNN HOUSING DEVELOPMENT PREPARED FOR FOUNTAIN						NORTH CAROLINA					
CITY OF CHARLOTTE						SHEET NUMBER RZ - 2					
Kimley»Horn						PRELIMINARY DOCUMENT					
© 2018 KIMLEY-HORN AND ASSOCIATES, INC. 200 SOUTH TRYON ST, SUITE 200, CHARLOTTE, NC 28202 PHONE: 704-333-5131 WWW.KIMLEY-HORN.COM NC LICENSE #F-0102						REVISIONS					
						No.					
						DATE					
						BY					

Plotted By: Streibridge, Kelsey Sheet Set: kha Layout: RZ - 4 RENDERINGS December 20, 2018 02:24:53pm K:\CHL_PRA\019818010 Fountain Marlynn\Rezoning - 007\CAD\PlanSheets\RZ-4-5 - SITE ELEVATIONS.dwg
This document, together with the concepts and designs presented herein, is intended only for the specific purpose and client for which it was prepared. Reuse of and improper reliance on this document without written authorization and adaptation by Kimley-Horn and Associates, Inc. shall be without liability to Kimley-Horn and Associates, Inc.



LONG VIEW TYPICAL COURTYARD ACCESS



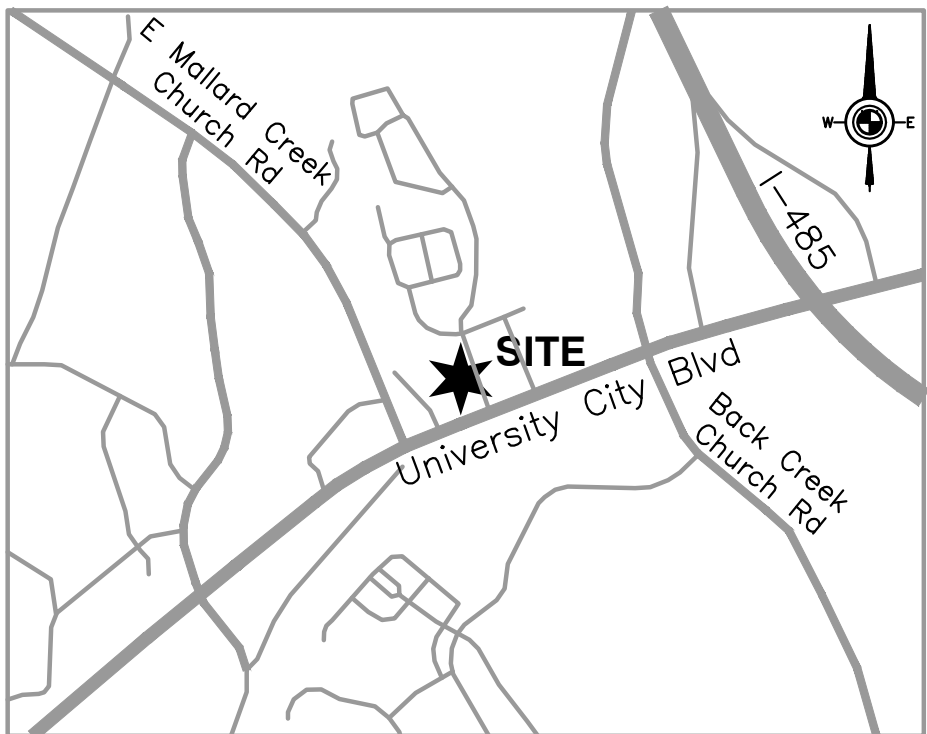
VIEW OF COURTYARD ACCESS UNIVERSITY CITY BOULEVARD



PRIMARY BUILDING ENTRANCE CORNER OF UNIVERSITY CITY BOULEVARD
AT EAST MALLARD CREEK CHURCH ROAD



TYPICAL ELEVATION MATERIAL
SELECTION AT PUBLIC STREETS



VICINITY MAP
NOT TO SCALE

THESE PERSPECTIVES ARE PROVIDED TO REFLECT THE ARCHITECTURAL STYLE AND QUALITY OF THE BUILDINGS TO BE CONSTRUCTED ON THE SITE. THE ACTUAL BUILDINGS CONSTRUCTED ON THE SITE MAY ONLY HAVE MINOR VARIATIONS FROM THIS ILLUSTRATION THAT ADHERE TO THE GENERAL ARCHITECTURAL CONCEPTS, AND INTENT ILLUSTRATED IS MAINTAINED.

NO.	REVISIONS	DATE	BY

Kimley»Horn

© 2018 KIMLEY-HORN AND ASSOCIATES, INC.
200 SOUTH TRYON ST, SUITE 200, CHARLOTTE, NC 28202
PHONE: 704-333-5131
WWW.KIMLEY-HORN.COM
NC LICENSE #F-0102

PRELIMINARY
DOCUMENT

KHA PROJECT	019818007
DATE	12/20/2018
SCALE	AS SHOWN
DESIGNED BY	KH
DRAWN BY	CH
CHECKED BY	JH

2018-075

RENDERINGS

REZONING PETITION NO. 2018-

MARLYNN HOUSING
DEVELOPMENT
PREPARED FOR
FOUNTAIN

CITY OF CHARLOTTE NORTH CAROLINA

SHEET NUMBER
RZ - 4

[illegible]