



Trinity Episcopal School

Charlotte, NC March/13/2017

RZ-2 Conceptual Plan

Prepared for:
Trinity Episcopal School
750 E. 9th St.
Charlotte, NC 28202
Petition #: 2017-004
Project #: 16-176

Prepared by:

MBAJ Architecture, PA
boomerang
DESIGN
rethink, repurpose, results



LANDSCAPE ARCHITECTURE
CIVIL ENGINEERING
LAND PLANNING
601 N. TRADE STREET, SUITE 200
WINSTON-SALEM, NC 27101
www.stimmelpa.com 336.723.1067



Existing Front Entrance



Existing Front Entrance



Existing McDowell St. Elevation



Preliminary Image from McDowell and 8th

Trinity Episcopal School

Charlotte, NC March/13/2017

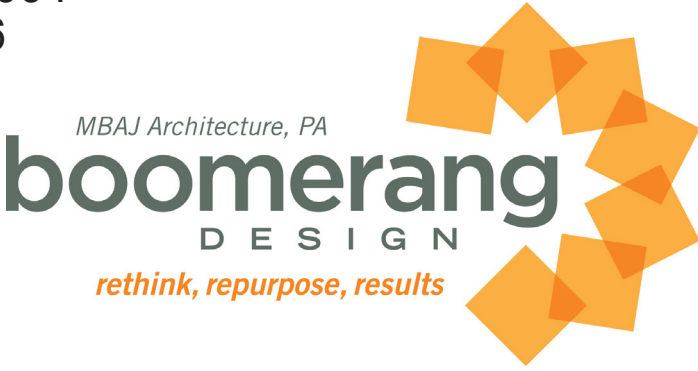
RZ-3

Illustrative/Conceptual Elevations

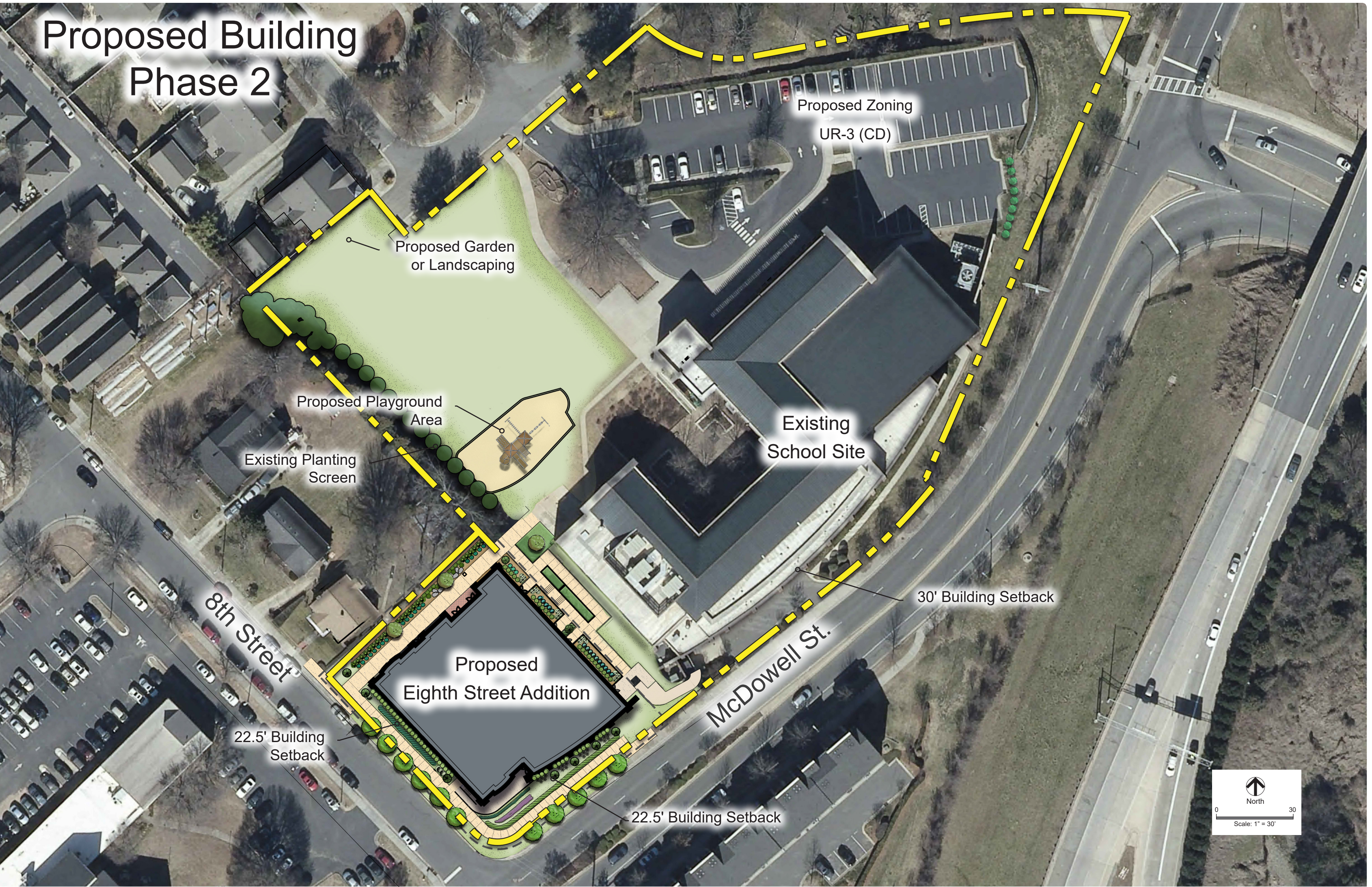
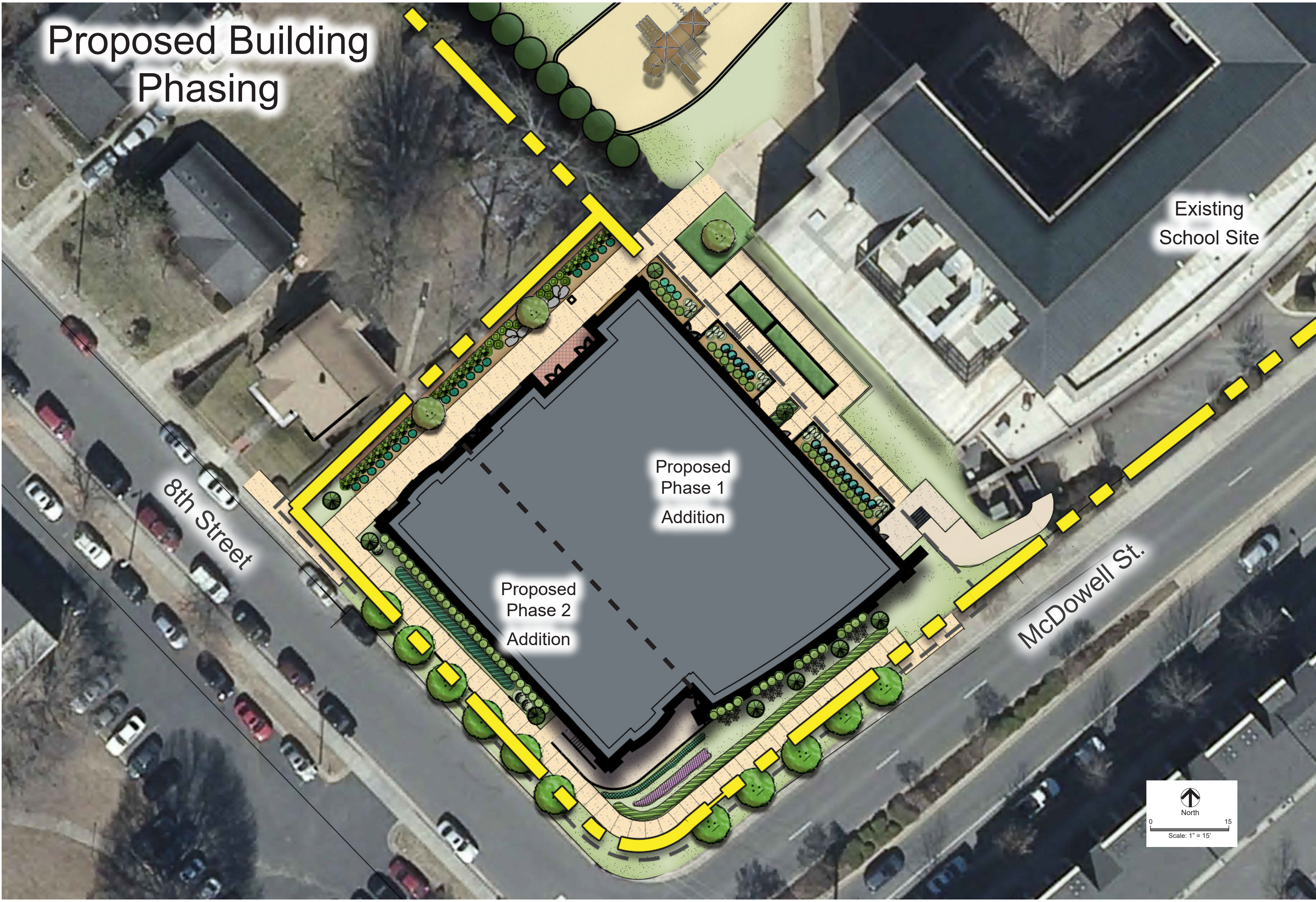
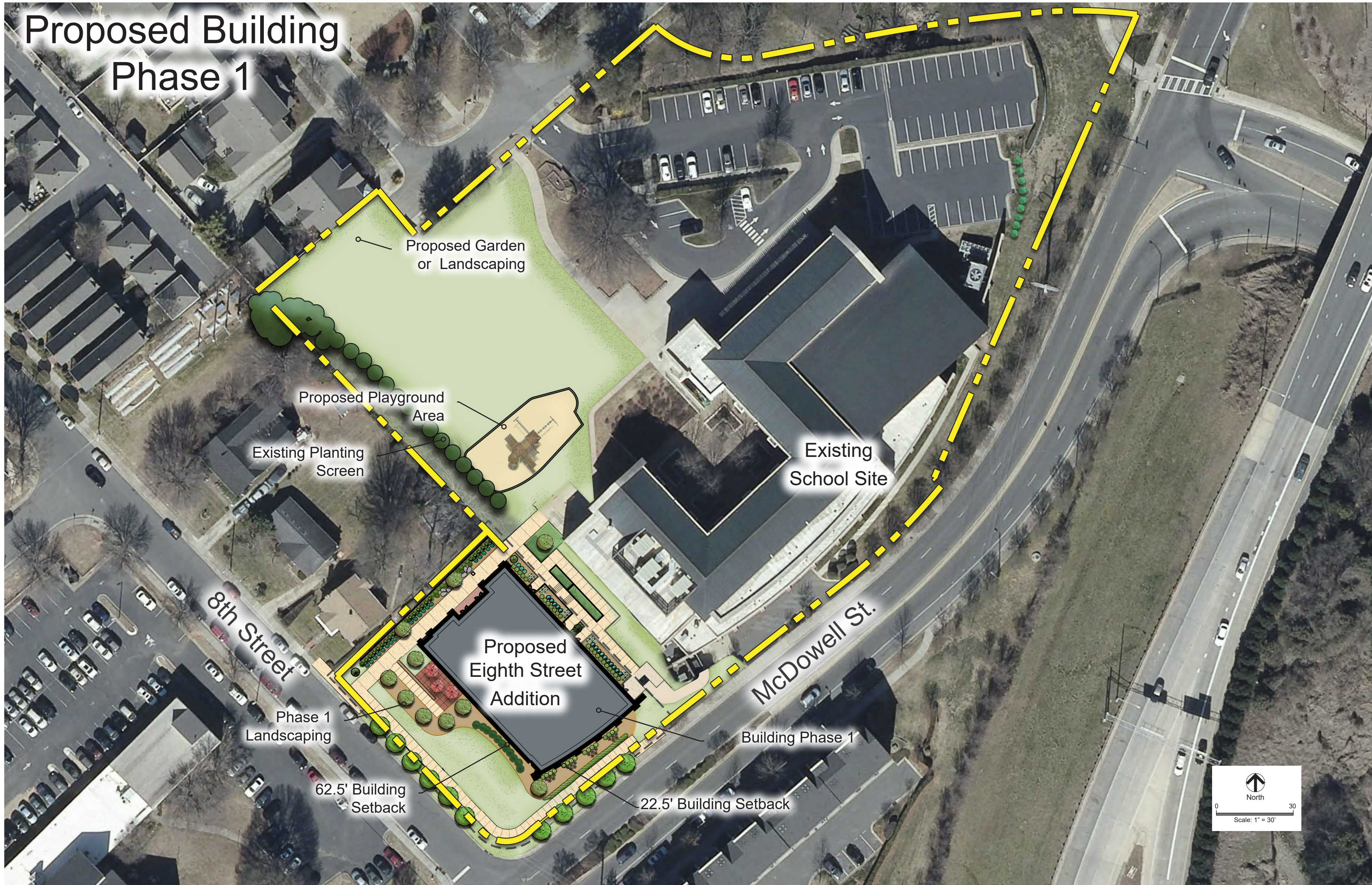
Prepared for:
Trinity Episcopal School
750 E. 9th St.
Charlotte, NC 28202

Petition #: 2017-004
Project #: 16-176

Prepared by:



**LANDSCAPE ARCHITECTURE
CIVIL ENGINEERING
LAND PLANNING**
601 N. TRADE STREET, SUITE 200
WINSTON-SALEM, NC 27101
www.stimmelpa.com 336.723.1067



	Reviewer	Date	Comments? Yes or No
Rezoning			
Area Planning			
Urban Design			
Subdivision			
Zoning	KYoung		
	TKeplinger		
	LHarmon		

Trinity Episcopal School

Charlotte, NC March/13/2017

Final -4
Final Phasing Plan

Prepared for:
Trinity Episcopal School
E. 9th St.
Charlotte, NC 28202
Project #: 2017-004
Sheet #: 16-176

Prepared by:



LANDSCAPE ARCHITECTURE
CIVIL ENGINEERING
LAND PLANNING
601 N. TRADE STREET, SUITE 200
WINSTON-SALEM, NC 27101
www.stimmelpa.com 336.723.1067