

CURE TABLE			
CURE	RADIUS	ARC LENGTH	CHORD BEARING
C1	50.00'	95.30'	75.32
C2	50.00'	68.05'	S 17.28 26' E
C3	50.00'	80.49'	S 70.53 22' W
C4	2053.48'	148.86'	N 24.18 10' W
C5	1524.83'	26.56'	N 23.74 24' E
C6	1833.11'	98.96'	N 25.22 19' E
C7	1524.83'	26.56'	N 25.22 19' E

METES AND BOUNDS DESCRIPTION
PER BOOK 12331, PG 666.

[illegible]

SCHEDULE B - SECTION 2
OPTIONS RELATING TO SURVEY

[illegible]

SURVEYOR CERTIFICATION

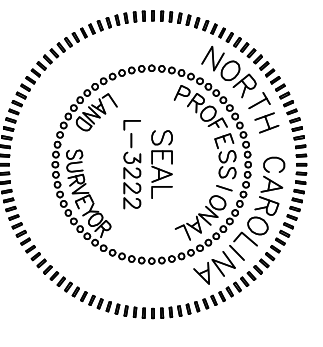
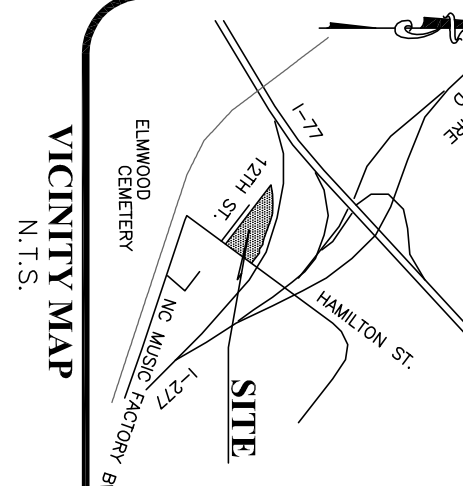
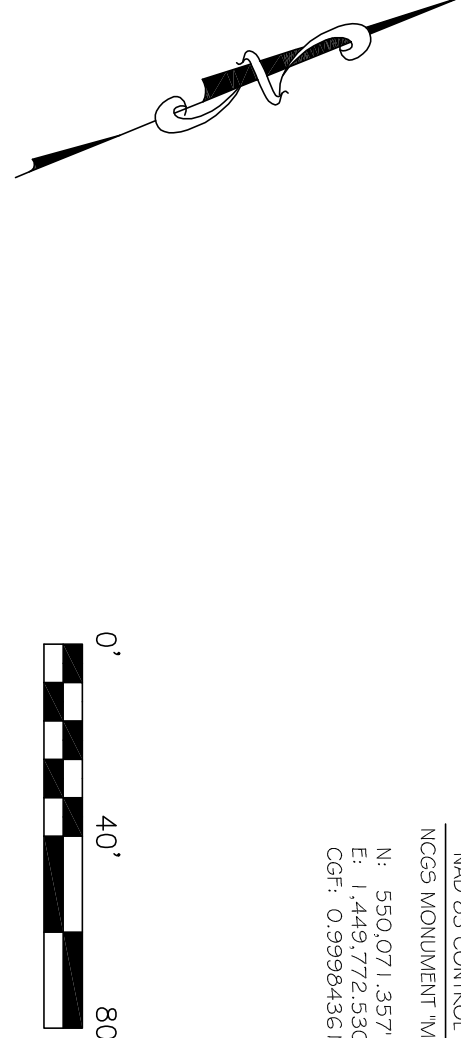
[illegible]

TONY B. SANDERS, PLS L-3222 _____ DATE _____

[illegible]

	IN	OUT	TYPE	NAME
1	WATER LINE	WATER	WATER	WATER
2	UNDERGROUND CABLE TV	UNDERGROUND CABLE TV	UNDERGROUND CABLE TV	UNDERGROUND CABLE TV
3	OVERHEAD ELECTRIC	OVERHEAD ELECTRIC	OVERHEAD ELECTRIC	OVERHEAD ELECTRIC
4	UNDERGROUND NATURAL GAS	UNDERGROUND NATURAL GAS	UNDERGROUND NATURAL GAS	UNDERGROUND NATURAL GAS
5	FLUE GAS	FLUE GAS	FLUE GAS	FLUE GAS
6	RIVER CREEK LINE	RIVER CREEK LINE	RIVER CREEK LINE	RIVER CREEK LINE
7	TELEPHONE LINE	TELEPHONE LINE	TELEPHONE LINE	TELEPHONE LINE
8	ROAD OR AVE	ROAD OR AVE	ROAD OR AVE	ROAD OR AVE
9	ADJOINT PROPERTY LINE	ADJOINT PROPERTY LINE	ADJOINT PROPERTY LINE	ADJOINT PROPERTY LINE
10	PROPERTY LINE	PROPERTY LINE	PROPERTY LINE	PROPERTY LINE
11	ESSENTIAL LINE	ESSENTIAL LINE	ESSENTIAL LINE	ESSENTIAL LINE
12	RETAINING WALL	RETAINING WALL	RETAINING WALL	RETAINING WALL
13	HOUSING	HOUSING	HOUSING	HOUSING
14	CARIN AND DRIVE	CARIN AND DRIVE	CARIN AND DRIVE	CARIN AND DRIVE
15	IRON NAIL SET 3/4 SHARD	IRON NAIL SET 3/4 SHARD	IRON NAIL SET 3/4 SHARD	IRON NAIL SET 3/4 SHARD
16	IRON NAIL 1/2 ROUND	IRON NAIL 1/2 ROUND	IRON NAIL 1/2 ROUND	IRON NAIL 1/2 ROUND
17	PAVING SHIRT COAT	PAVING SHIRT COAT	PAVING SHIRT COAT	PAVING SHIRT COAT
18	PAVING SHIRT	PAVING SHIRT	PAVING SHIRT	PAVING SHIRT
19	PAVING SHIRT	PAVING SHIRT	PAVING SHIRT	PAVING SHIRT
20	CALCULATED DOWN NAIL SET	CALCULATED DOWN NAIL SET	CALCULATED DOWN NAIL SET	CALCULATED DOWN NAIL SET
21	CONCRETE FOUNDATION	CONCRETE FOUNDATION	CONCRETE FOUNDATION	CONCRETE FOUNDATION
22	TRITE COSE AND TRITE AS NOTED	TRITE COSE AND TRITE AS NOTED	TRITE COSE AND TRITE AS NOTED	TRITE COSE AND TRITE AS NOTED
23	SHARD SHARD	SHARD SHARD	SHARD SHARD	SHARD SHARD
24	SHARD	SHARD	SHARD	SHARD
25	SHARD	SHARD	SHARD	SHARD
26	SHARD	SHARD	SHARD	SHARD
27	SHARD	SHARD	SHARD	SHARD
28	SHARD	SHARD	SHARD	SHARD
29	SHARD	SHARD	SHARD	SHARD
30	SHARD	SHARD	SHARD	SHARD
31	SHARD	SHARD	SHARD	SHARD
32	SHARD	SHARD	SHARD	SHARD
33	SHARD	SHARD	SHARD	SHARD
34	SHARD	SHARD	SHARD	SHARD
35	SHARD	SHARD	SHARD	SHARD
36	SHARD	SHARD	SHARD	SHARD
37	SHARD	SHARD	SHARD	SHARD
38	SHARD	SHARD	SHARD	SHARD
39	SHARD	SHARD	SHARD	SHARD
40	SHARD	SHARD	SHARD	SHARD
41	SHARD	SHARD	SHARD	SHARD
42	SHARD	SHARD	SHARD	SHARD
43	SHARD	SHARD	SHARD	SHARD
44	SHARD	SHARD	SHARD	SHARD
45	SHARD	SHARD	SHARD	SHARD
46	SHARD	SHARD	SHARD	SHARD
47	SHARD	SHARD	SHARD	SHARD
48	SHARD	SHARD	SHARD	SHARD
49	SHARD	SHARD	SHARD	SHARD
50	SHARD	SHARD	SHARD	SHARD
51	SHARD	SHARD	SHARD	SHARD
52	SHARD	SHARD	SHARD	SHARD
53	SHARD	SHARD	SHARD	SHARD
54	SHARD	SHARD	SHARD	SHARD
55	SHARD	SHARD	SHARD	SHARD
56	SHARD	SHARD	SHARD	SHARD
57	SHARD	SHARD	SHARD	SHARD
58	SHARD	SHARD	SHARD	SHARD
59	SHARD	SHARD	SHARD	SHARD
60	SHARD	SHARD	SHARD	SHARD
61	SHARD	SHARD	SHARD	SHARD
62	SHARD	SHARD	SHARD	SHARD
63	SHARD	SHARD	SHARD	SHARD
64	SHARD	SHARD	SHARD	SHARD
65	SHARD	SHARD	SHARD	SHARD
66	SHARD	SHARD	SHARD	SHARD
67	SHARD	SHARD	SHARD	SHARD
68	SHARD	SHARD	SHARD	SHARD
69	SHARD	SHARD	SHARD	SHARD
70	SHARD	SHARD	SHARD	SHARD
71	SHARD	SHARD	SHARD	SHARD
72	SHARD	SHARD	SHARD	SHARD
73	SHARD	SHARD	SHARD	SHARD
74	SHARD	SHARD	SHARD	SHARD
75	SHARD	SHARD	SHARD	SHARD
76	SHARD	SHARD	SHARD	SHARD
77	SHARD	SHARD	SHARD	SHARD
78	SHARD	SHARD	SHARD	SHARD
79	SHARD	SHARD	SHARD	SHARD
80	SHARD	SHARD	SHARD	SHARD
81</				

1. ALL DISTANCES ARE HORIZONTAL MEASUREMENTS UNLESS OTHERWISE NOTED.
2. ALL AREAS ARE CALCULATED BY THE COORDINATED METHODS.
3. THIS PLAN IS NOT FOR RECONSTRUCTION AS PER C.S. 47-35, AMENDED.
4. ALL CORNERS MONUMENTED AS SHOWN.
5. SUBJECT PROPERTY IS NOT LOCATED WITHIN A FLOOD ZONE AS DETERMINED BY TDA-TTAL COMMUNITY PANEL NO. 370544-0400, BEARING AN EFFECTIVE DATE OF MARCH 02, 2009.
6. SUBJECT PROPERTY IS CURRENTLY ZONED AS L-1(C)(2)
7. CURRENT ZONING MAPS FOR THIS ZONING ARE AS FOLLOWS:
 1. STONY BROOK, NY
 2. STONY BROOK, NY
 3. STONY BROOK, NY
 4. STONY BROOK, NY
 5. STONY BROOK, NY
 6. STONY BROOK, NY
 7. STONY BROOK, NY
 8. STONY BROOK, NY
 9. STONY BROOK, NY
 10. STONY BROOK, NY
 11. STONY BROOK, NY
 12. STONY BROOK, NY
 13. STONY BROOK, NY
 14. STONY BROOK, NY
 15. STONY BROOK, NY
 16. STONY BROOK, NY
 17. STONY BROOK, NY
 18. STONY BROOK, NY
 19. STONY BROOK, NY
 20. STONY BROOK, NY
 21. STONY BROOK, NY
 22. STONY BROOK, NY
 23. STONY BROOK, NY
 24. STONY BROOK, NY
 25. STONY BROOK, NY
 26. STONY BROOK, NY
 27. STONY BROOK, NY
 28. STONY BROOK, NY
 29. STONY BROOK, NY
 30. STONY BROOK, NY
 31. STONY BROOK, NY
 32. STONY BROOK, NY
 33. STONY BROOK, NY
 34. STONY BROOK, NY
 35. STONY BROOK, NY
 36. STONY BROOK, NY
 37. STONY BROOK, NY
 38. STONY BROOK, NY
 39. STONY BROOK, NY
 40. STONY BROOK, NY
 41. STONY BROOK, NY
 42. STONY BROOK, NY
 43. STONY BROOK, NY
 44. STONY BROOK, NY
 45. STONY BROOK, NY
 46. STONY BROOK, NY
 47. STONY BROOK, NY
 48. STONY BROOK, NY
 49. STONY BROOK, NY
 50. STONY BROOK, NY
 51. STONY BROOK, NY
 52. STONY BROOK, NY
 53. STONY BROOK, NY
 54. STONY BROOK, NY
 55. STONY BROOK, NY
 56. STONY BROOK, NY
 57. STONY BROOK, NY
 58. STONY BROOK, NY
 59. STONY BROOK, NY
 60. STONY BROOK, NY
 61. STONY BROOK, NY
 62. STONY BROOK, NY
 63. STONY BROOK, NY
 64. STONY BROOK, NY
 65. STONY BROOK, NY
 66. STONY BROOK, NY
 67. STONY BROOK, NY
 68. STONY BROOK, NY
 69. STONY BROOK, NY
 70. STONY BROOK, NY
 71. STONY BROOK, NY
 72. STONY BROOK, NY
 73. STONY BROOK, NY
 74. STONY BROOK, NY
 75. STONY BROOK, NY
 76. STONY BROOK, NY
 77. STONY BROOK, NY
 78. STONY BROOK, NY
 79. STONY BROOK, NY
 80. STONY BROOK, NY
 81. STONY BROOK, NY
 82. STONY BROOK, NY
 83. STONY BROOK, NY
 84. STONY BROOK, NY
 85. STONY BROOK, NY
 86. STONY BROOK, NY
 87. STONY BROOK, NY
 88. STONY BROOK, NY
 89. STONY BROOK, NY
 90. STONY BROOK, NY
 91. STONY BROOK, NY
 92. STONY BROOK, NY
 93. STONY BROOK, NY
 94. STONY BROOK, NY
 95. STONY BROOK, NY
 96. STONY BROOK, NY
 97. STONY BROOK, NY
 98. STONY BROOK, NY
 99. STONY BROOK, NY
 100. STONY BROOK, NY
 101. STONY BROOK, NY
 102. STONY BROOK, NY
 103. STONY BROOK, NY
 104. STONY BROOK, NY
 105. STONY BROOK, NY
 106. STONY BROOK, NY
 107. STONY BROOK, NY
 108. STONY BROOK, NY
 109. STONY BROOK, NY
 110. STONY BROOK, NY
 111. STONY BROOK, NY
 112. STONY BROOK, NY
 113. STONY BROOK, NY
 114. STONY BROOK, NY
 115. STONY BROOK, NY
 116. STONY BROOK, NY
 117. STONY BROOK, NY
 118. STONY BROOK, NY
 119. STONY BROOK, NY
 120. STONY BROOK, NY
 121. STONY BROOK, NY
 122. STONY BROOK, NY
 123. STONY BROOK, NY
 124. STONY BROOK, NY
 125. STONY BROOK, NY
 126. STONY BROOK, NY
 127. STONY BROOK, NY
 128. STONY BROOK, NY
 129. STONY BROOK, NY
 130. STONY BROOK, NY
 131. STONY BROOK, NY
 132. STONY BROOK, NY
 133. STONY BROOK, NY
 134. STONY BROOK, NY
 135. STONY BROOK, NY
 136. STONY BROOK, NY
 137. STONY BROOK, NY
 138. STONY BROOK, NY
 139. STONY BROOK, NY
 140. STONY BROOK, NY
 141. STONY BROOK, NY
 142. STONY BROOK, NY
 143. STONY BROOK, NY
 144. STONY BROOK, NY
 145. STONY BROOK, NY
 146. STONY BROOK, NY
 147. STONY BROOK, NY
 148. STONY BROOK, NY
 149. STONY BROOK, NY
 150. STONY BROOK, NY
 151. STONY BROOK, NY
 152. STONY BROOK, NY
 153. STONY BROOK, NY
 154. STONY BROOK, NY
 155. STONY BROOK, NY
 156. STONY BROOK, NY
 157. STONY BROOK, NY
 158. STONY BROOK, NY
 159. STONY BROOK, NY
 160. STONY BROOK, NY
 161. STONY BROOK, NY
 162. STONY BROOK, NY
 163. STONY BROOK, NY
 164. STONY BROOK, NY
 165. STONY BROOK, NY
 166. STONY BROOK, NY
 167. STONY BROOK, NY
 168. STONY BROOK, NY
 169. STONY BROOK, NY
 170. STONY BROOK, NY
 171. STONY BROOK, NY
 172. STONY BROOK, NY
 173. STONY BROOK, NY
 174. STONY BROOK, NY
 175. STONY BROOK, NY
 176. STONY BROOK, NY
 177. STONY BROOK, NY
 178. STONY BROOK, NY
 179. STONY BROOK, NY
 180. STONY BROOK, NY
 181. STONY BROOK, NY
 182. STONY BROOK, NY
 183. STONY BROOK, NY
 184. STONY BROOK, NY
 185. STONY BROOK, NY
 186. STONY BROOK, NY
 187. STONY BROOK, NY
 188. STONY BROOK, NY
 189. STONY BROOK, NY
 190. STONY BROOK, NY
 191. STONY BROOK, NY
 192. STONY BROOK, NY
 193. STONY BROOK, NY
 194. STONY BROOK, NY
 195. STONY BROOK, NY
 196. STONY BROOK, NY
 197. STONY BROOK, NY
 198. STONY BROOK, NY
 199. STONY BROOK, NY
 200. STONY BROOK, NY
 201. STONY BROOK, NY
 202. STONY BROOK, NY
 203. STONY BROOK, NY
 204. STONY BROOK, NY
 205. STONY BROOK, NY
 206. STONY BROOK, NY
 207. STONY BROOK, NY
 208. STONY BROOK, NY
 209. STONY BROOK, NY
 210. STONY BROOK, NY
 211. STONY BROOK, NY
 212. STONY BROOK, NY
 213. STONY BROOK, NY
 214. STONY BROOK, NY
 215. STONY BROOK, NY
 216. STONY BROOK, NY
 217. STONY BROOK, NY
 218. STONY BROOK, NY
 219. STONY BROOK, NY
 220. STONY BROOK, NY
 221. STONY BROOK, NY
 222. STONY BROOK, NY
 223. STONY BROOK, NY
 224. STONY BROOK, NY
 225. STONY BROOK, NY
 226. STONY BROOK, NY
 227. STONY BROOK, NY
 228. STONY BROOK, NY
 229. STONY BROOK, NY
 230. STONY BROOK, NY
 231. STONY BROOK, NY
 232. STONY BROOK, NY
 233. STONY BROOK, NY
 234. STONY BROOK, NY
 235. STONY BROOK, NY
 236. STONY BROOK, NY
 237. STONY BROOK, NY
 238. STONY BROOK, NY
 239. STONY BROOK, NY
 240. STONY BROOK, NY
 241. STONY BROOK, NY
 242. STONY BROOK, NY
 243. STONY BROOK, NY
 244. STONY BROOK, NY
 245. STONY BROOK, NY
 246. STONY BROOK, NY
 247. STONY BROOK, NY
 248. STONY BROOK, NY
 249. STONY BROOK, NY
 250. STONY BROOK, NY
 251. STONY BROOK, NY
 252. STONY BROOK, NY
 253. STONY BROOK, NY
 254. STONY BROOK, NY
 255. STONY BROOK, NY
 256. STONY BROOK, NY
 257. STONY BROOK, NY
 258. STONY BROOK, NY
 259. STONY BROOK, NY
 260. STONY BROOK, NY
 261. STONY BROOK, NY
 262. STONY BROOK, NY
 263. STONY BROOK, NY
 264. STONY BROOK, NY
 265. STONY BROOK, NY
 266. STONY BROOK, NY



Map Prepared By:



The logo for S&M features a circle with a triangle inside it. The letters 'S' and 'M' are on the left and right sides of the circle, and an ampersand (&) is in the center. The triangle is positioned at the top of the circle.

PROPERTY OWNER:
FIBER MILLS, LLC.
MUSIC FACTORY CONDOMINIUMS, LLC.

PREPARED FOR:
FIRST AMERICAN TITLE INSURANCE COMPANY, INC.
7200 COLLEGE BLVD
OVERLAND PARK, KS 66210

SHEET
2

OF
2

Digital Screen System Information and Sizing for NC Music Factory

NC Music Factory has engaged Ingenuity Sun Media LLC to design a Solar Generating digital sign system to be installed on the property in which to enhance the visitor experience and generate revenue for NC Music Factory. The system consists of 4 Sun Media Trees and 1 Sun Media Street display. All of the screens will display the same message at the same time at different locations on the property. Additionally, this system will have the capability to broadcast Civic Messaging such as Severe Weather or Amber Alerts, thus enhancing public safety. The screens are oriented so that they are not directly facing the public right of way and are intended to serve the patrons visiting the NC Music Factory. Each screen is approximately 3'x5' and if placed on a Sun Media Tree will be mounted at a height of 8' so that there is proper clearance for pedestrians. Please see location map for placement on Property. When used as a ground mounted version, or Street Furniture, these screens are mounted on a 2' base plate and will stand 7' in total height.

Please see site map for locations, orientation and unit descriptions.

Polaris 3G Map – Mecklenburg County, North Carolina

NC Music Factory Buffers

Date Printed: 12/16/2013 9:01:08 AM



This map or report is prepared for the inventory of real property within Mecklenburg County and is compiled from recorded deeds, plats, tax maps, surveys, planimetric maps, and other public records and data. Users of this map or report are hereby notified that the aforementioned public primary information sources should be consulted for verification. Mecklenburg County and its mapping contractors assume no legal responsibility for the information contained herein.

Polaris 3G Map – Mecklenburg County, North Caro

NCMF - Main Detail

NC Music Factory REZONE AREA

Da

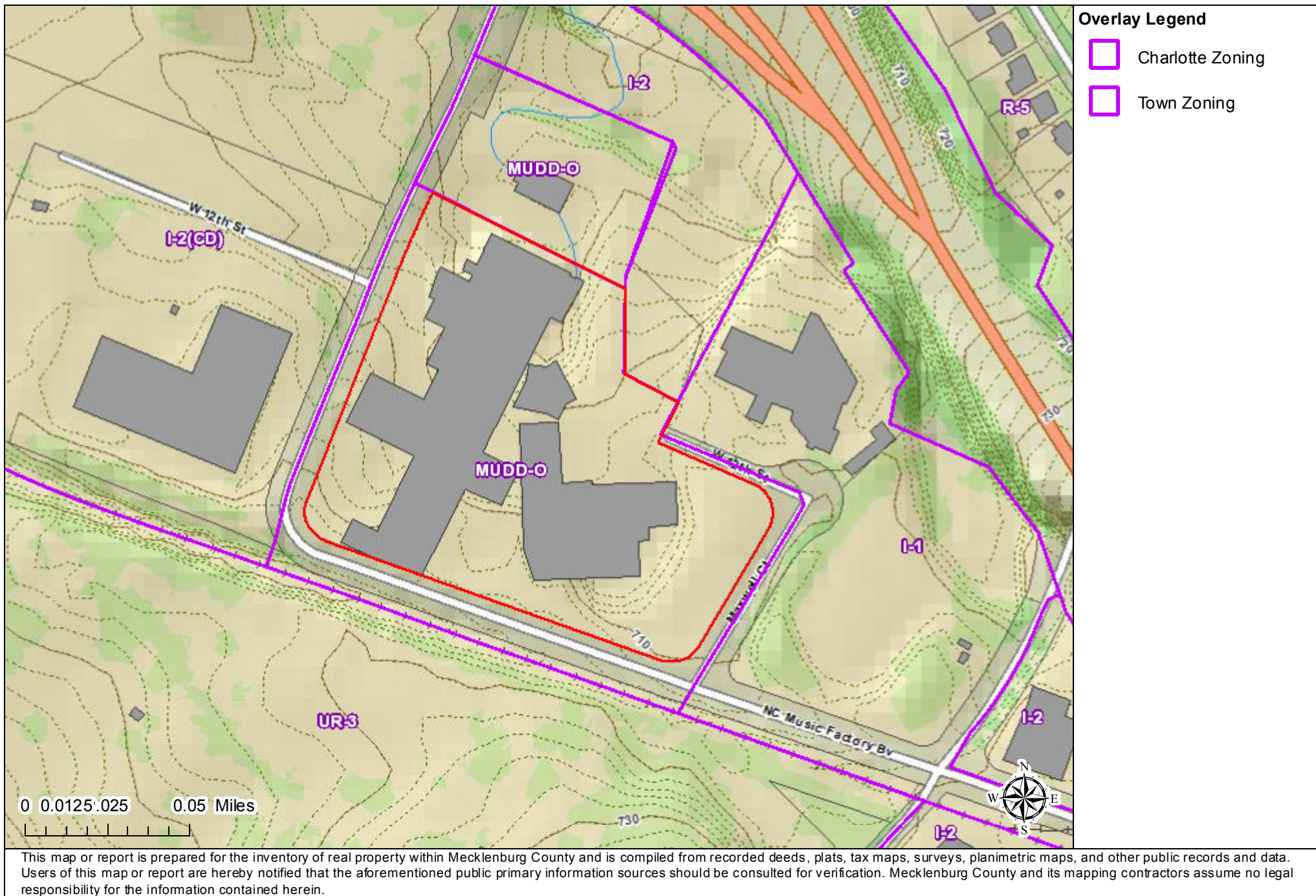


This map or report is prepared for the inventory of real property within Mecklenburg County and is compiled from recorded deeds, plats, tax maps, surveys, planimet
Users of this map or report are hereby notified that the aforementioned public primary information sources should be consulted for verification. Mecklenburg County
responsibility for the information contained herein.

Polaris 3G Map – Mecklenburg County, North Carolina

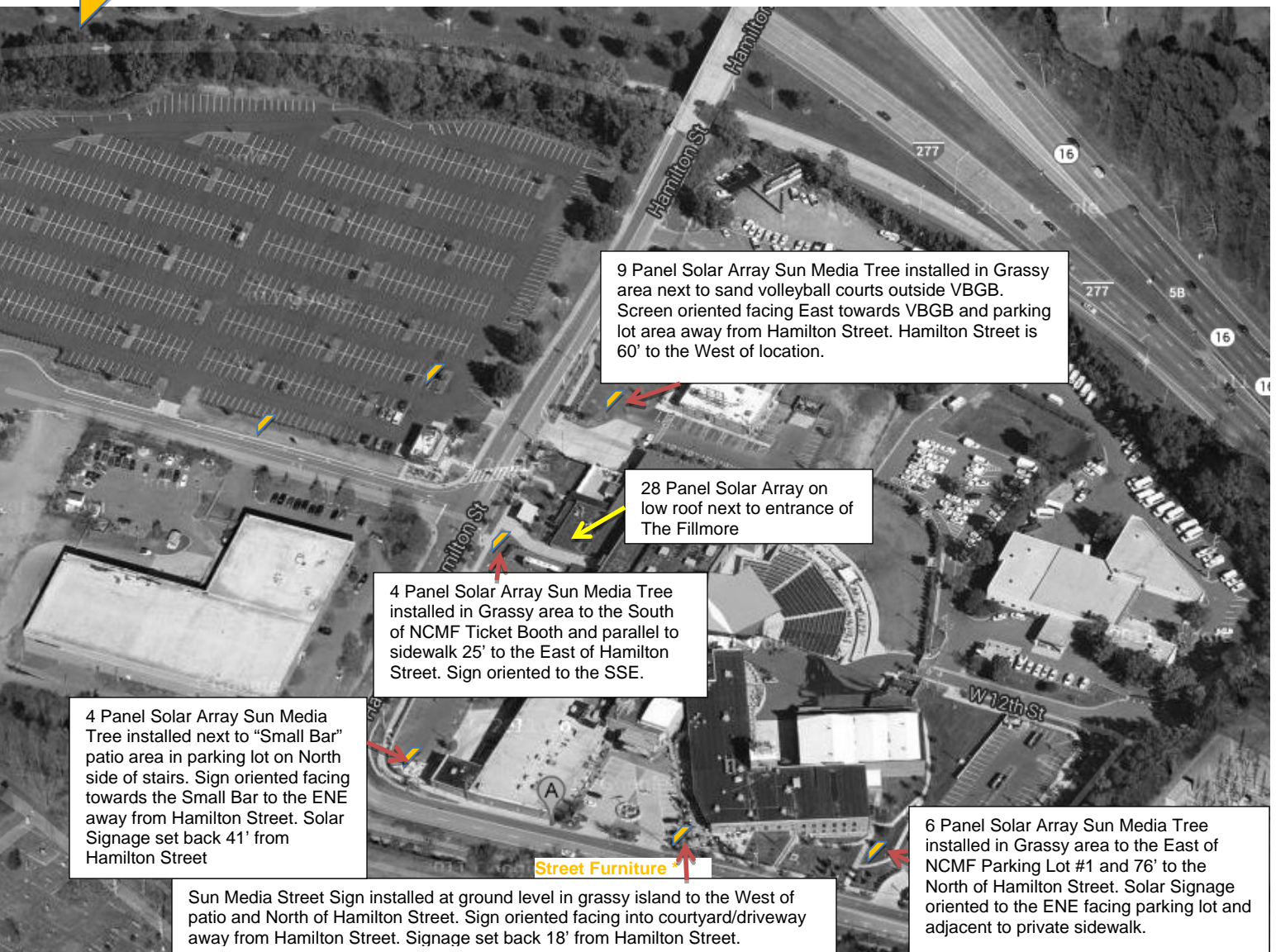
NCMF - Topography

Date Printed: 12/14/2013 10:58:57 AM



Indicates Screen Direction.
Short side is front facing screen

NC Music Factory SMT Locations



NC Music Factory Digital Screen Locations





To see all the details that are visible on the screen, use the "Print" link next to the map

1

Location 1. Sun Media Tree will be facing into Parking Lot and seating area of VBGB.





To see all the details that are visible on the screen, use the Print link on the map.

2

Location #2.
Sun Media Tree will be perpendicular to Hamilton Street facing South into building and oncoming sidewalk pedestrian traffic.





To see all the details that are visible on the screen, use the "Pnt" link next to the map.

3

Location #3.
Sun Media Tree will be mounted
in Parking lot next to patio.
Screen will face into building and
parking / patio area.





To see all the details that are visible on the screen, use the "Print" link next to the map.

4

Location #4.
Ground Mounted Sun Media "Street Furniture" will be in grassy island facing in toward to patio and parking lot areas.





To see all the details that are visible on the screen, use the "Print" next to the map.

5

Location #5.
Sun Media Tree will be located between the parking lot and pedestrian walkway and will be facing into the parking lot area.



6 MM STREET FURNITURE VIDEO DISPLAY

LED STREET LEVEL DISPLAYS



Digital street furniture provides a sleek, European-inspired design that compliments surrounding architecture, emphasizing your message—not the medium. Vibrant images and unsurpassed picture quality capture the attention of passers-by and deliver maximum visibility to both scheduled advertising and timely information. Industry-leading technology combined with Daktronics proven reliability ensures that your message is delivered. Make a statement and a substantial Return on Investment with Daktronics digital street furniture.

SLEEK, REFINED DESIGN

Aesthetically pleasing design that emphasizes the advertiser's message while complimenting surrounding architecture.

SUN-CUTTING BRIGHTNESS

6,000 nits of adjustable brightness means messages are seen in any environment, any time of day, creating the only true daylight viewable solution.

LONGEST-LASTING TECHNOLOGY

Daktronics digital street furniture is built with the highest-quality LED technology that's proven to last. The operational lifetime of this product is 3-4 times longer when compared to outdoor LCD display technology.

MAXIMUM RETURN ON INVESTMENT

By selecting superior LED technology packaged in a high-contrast module design, users save on power consumption while providing superior image quality and vivid picture detail.

UNSURPASSED APPLICATION FLEXIBILITY

From campuses to cityscapes, arenas and beyond, Daktronics digital street furniture is specifically designed for high impact on slow-moving vehicular and pedestrian traffic.

MOST ROBUST TECHNOLOGY

Specifically built for harsh outdoor environments, this product features UV and vandal resistant glass, weather sealed components, and runs cooler than LCD displays. Users have peace-of-mind in product reliability.

24/7 DISPLAY HEALTH

Daktronics remote diagnostics increases display uptime and provides an immediate response should an error occur.

NO NONSENSE CONTROL

Daktronics proprietary content management system provides user friendly attributes and the power to manage large networks.

KEEP COMMUNITIES SAFE

Daktronics digital street furniture accepts feeds that provide emergency information to one, or a network of displays at a moment's notice.

ULTIMATE POWER CONTROL

Displays come standard with remote power control. Safely shut down from a remote location in inclement weather and eliminate service visits to restore power.

WHISPER QUIET VENTILATION

An innovative ventilation system eliminates unnecessary background noise.



DAKTRONICS

STREET FURNITURE 6 MM SINGLE FACE PRODUCT SPECIFICATION

2 Square Meter Configuration

Pixel Configuration	RGB 3-in-1 SMD
Screen Configuration	240 x 192 pixels
Active Area	1585 mm x 1268 mm - (62.4" x 49.9")
Panel Dimensions (HxWxD)¹	1820 mm x 1460 mm x 220 mm - (71.65" x 57.48" x 8.66")
Diagonal Measurement	80" (2032 mm)
Pixels per Square Meter	22,927 pixels per square meter
System Maximum Power²	1594 watts
System Average Power²	485 watts
Weight	260 kg - 573 lbs (component & cabinet weight)
Processing	22 bit (Distributed)
Color Capacity	16 bit (281 trillion colors)
Dimming	256 levels
Color Temperature	3000° - 10,000° K (adjustable)
Calibration	Full depth, LED to LED
LED Refresh Rate	4800 Hz
Calibrated Intensity (measured at 6,500 deg K)³	6000 nits (cd/sm)
Lifetime	100,000 hours
Data Transmission to Display	Ethernet, 3G/4G compatible
Temperature Rating⁴	-35° to 45° C (-31° to 113° F)
Ventilation System	Forced Air/Filter
Protection	UV and vandal-resistant glass

2.5 Square Meter Configuration

Pixel Configuration	RGB 3-in-1 SMD
Screen Configuration	288 x 192 pixels
Active Area	1902 mm x 1268 mm - (74.9" x 49.9")
Panel Dimensions (HxWxD)¹	2137 mm x 1460 mm x 220 mm - (84.13" x 57.48" x 8.66")
Diagonal Measurement	90" (2286 mm)
Pixels per Square Meter	22,927 pixels per square meter
System Maximum Power²	1905 watts
System Average Power²	570 watts
Weight	295 kg - 650 lbs (component & cabinet weight)
Processing	22 bit (Distributed)
Color Capacity	16 bit (281 trillion colors)
Dimming	256 levels
Color Temperature	3000° - 10,000° K (adjustable)
Calibration	Full depth, LED to LED
LED Refresh Rate	4800 Hz
Calibrated Intensity (measured at 6,500 deg K)³	6000 nits (cd/sm)
Lifetime	100,000 hours
Data Transmission to Display	Ethernet, 3G/4G compatible
Temperature Rating⁴	-35° to 45° C (-31° to 113° F)
Ventilation System	Forced Air/Filter
Protection	UV and vandal-resistant glass

Note 1: Panel dimensions are limited to panel specifically and do not include support structure and/or cabinet.

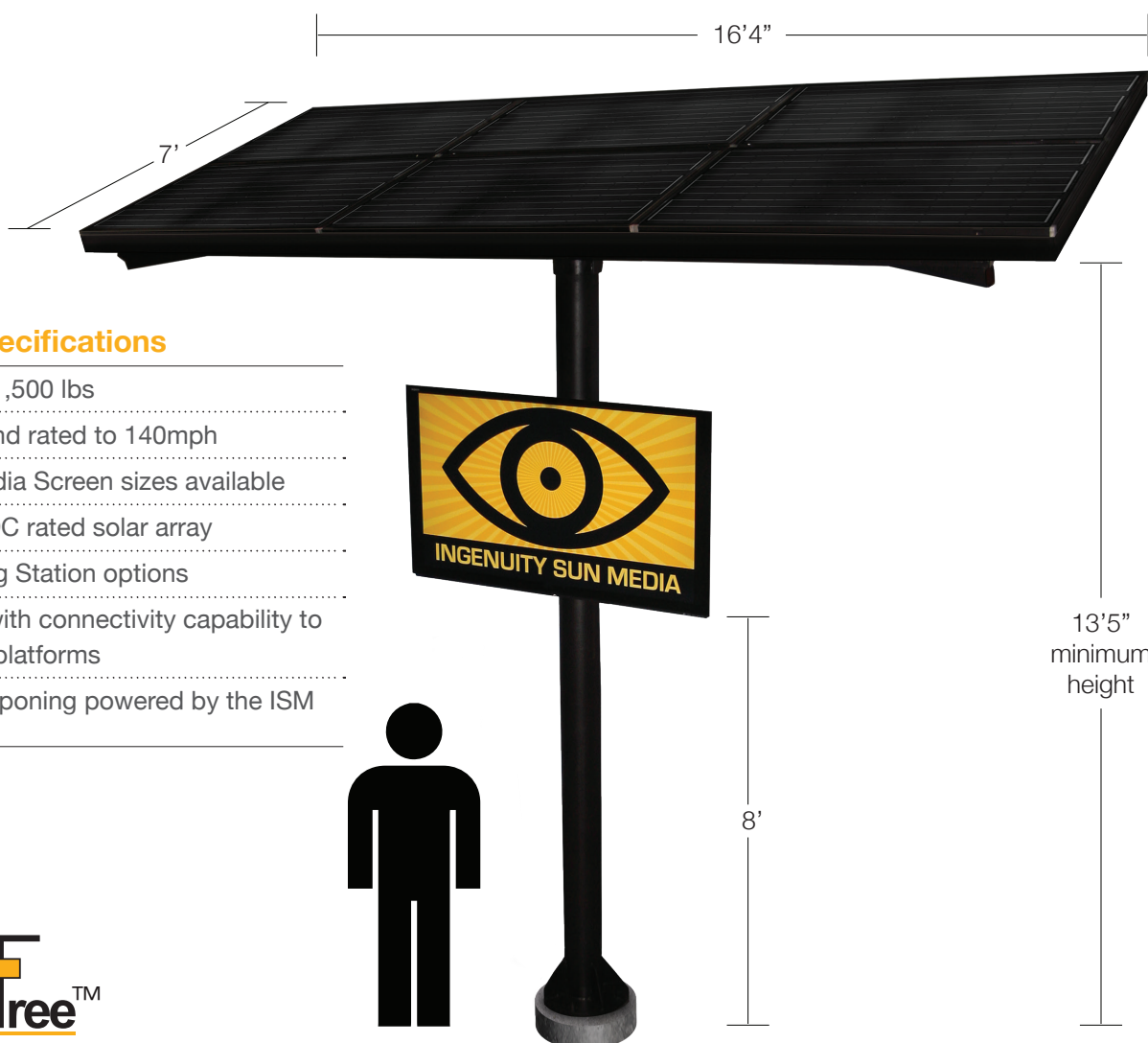
Note 2: Power draw varies depending upon display ventilation.

Note 3: Measurement taken with display behind protective glass.

Note 4: Temperature range is based on typical usage (100% brightness, 50% content). Display will operate above listed temp range but will see greater rates of dimming.

Note 5: Customized street furniture possible within limits imposed by ventilation requirements and UV glass manufacturing limitations.

Note 6: Consistent with Daktronics policy of continuing product improvement, specifications shown on this document are subject to change without notice.



Sun Media Tree Specifications

- Approximate weight of 1,500 lbs
- PE stamped design. Wind rated to 140mph
- Multiple LED Digital Media Screen sizes available
- Approximately 1.5 kW DC rated solar array
- Electric Vehicle Charging Station options
- Digital Media Network with connectivity capability to existing internal digital platforms
- Digital platform and couponing powered by the ISM Shoppers Network™





Available Options

Security Cameras

Arecont

LED Lighting

CREE Aeroblades

EV Charging Stations *(Single and Dual Level II)*

Coulomb Technologies

Schneider Electric

General Electric



Contact

111 Canfield Avenue Suite B12
Randolph, NJ 07869
973-970-9860
www.ingenuitysunmedia.com

Sales

John Morgan,
President / Business Development / Founder

jmorgan@ingenuitysunmedia.com / C. 908-625-7577 / O. 973-970-9862

R.C. Olsen,
Southeast Regional Sales Manager

rcolsen@ingenuitysunmedia.com / C. 704-526-8234 /
405 Palmerston Lane Waxhaw, NC 28173

Marketing

Nelson Martinez,
CEO / System Designer / Founder

nmartinez@ingenuitysunmedia.com / C. 917-699-9127 / O. 973-970-9863

Jason Wilson,
Director of Media Sales

jwilson@ingenuitysunmedia.com / C. 484-358-1550