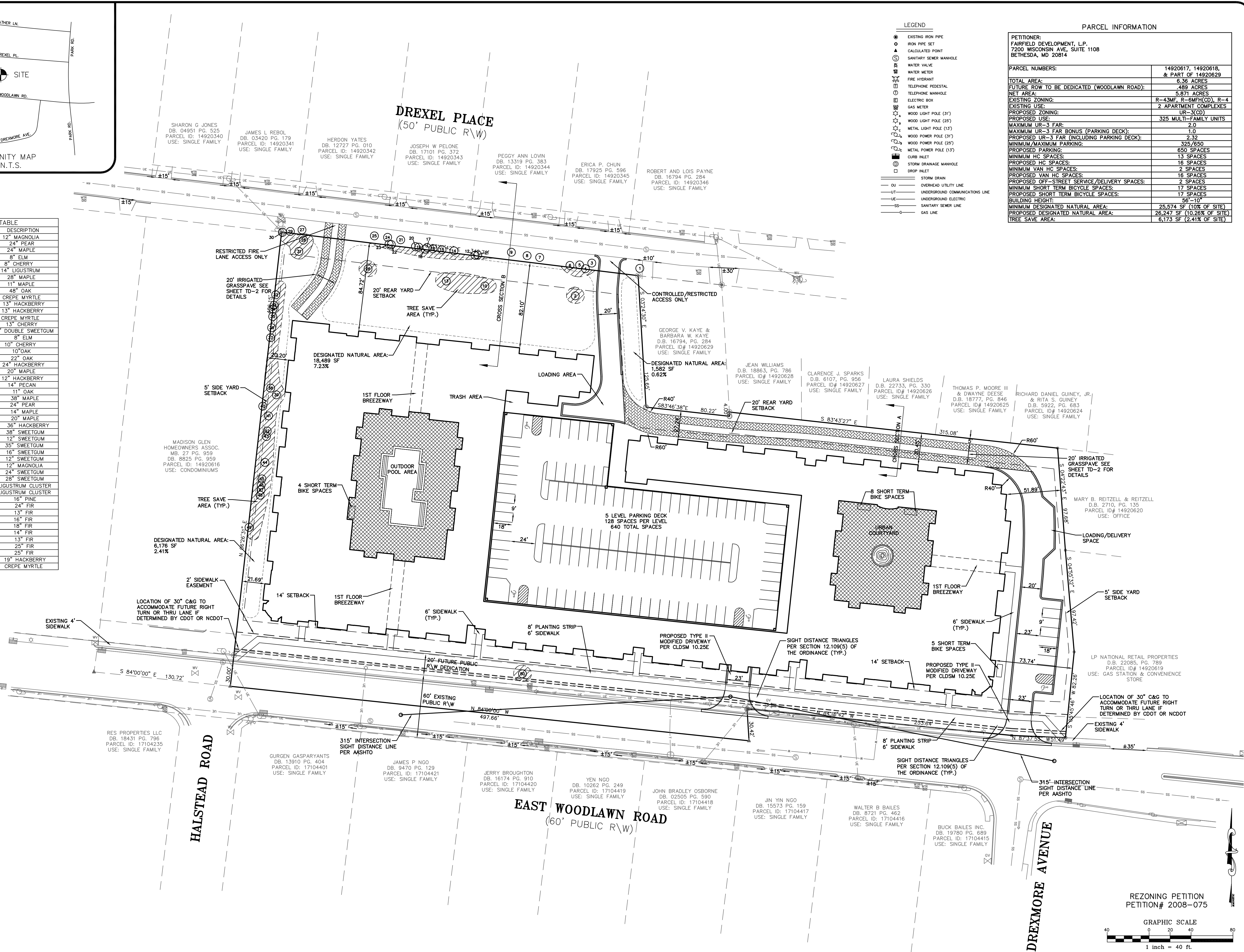


TREE TABLE	
NUMBER	DESCRIPTION
1	12" MAGNOLIA
2	24" PEAR
3	24" MAPLE
4	8" ELM
5	8" CHERRY
6	14" LIGUSTRUM
7	28" MAPLE
8	11" MAPLE
9	48" OAK
10	CREPE MYRTLE
11	13" HACKBERRY
12	13" HACKBERRY
13	CREPE MYRTLE
14	13" CHERRY
15	16" DOUBLE SWEETGUM
16	8" ELM
17	10" CHERRY
18	10" OAK
19	22" OAK
20	24" HACKBERRY
21	20" MAPLE
22	12" HACKBERRY
23	14" PECAN
24	11" OAK
25	38" MAPLE
26	24" PEAR
27	14" MAPLE
28	20" MAPLE
29	36" HACKBERRY
30	38" SWEETGUM
31	12" SWEETGUM
32	35" SWEETGUM
33	16" SWEETGUM
34	12" SWEETGUM
35	12" MAGNOLIA
36	24" SWEETGUM
37	28" SWEETGUM
38	LIGUSTRUM CLUSTER
39	LIGUSTRUM CLUSTER
40	16" PINE
41	24" FIR
42	13" FIR
43	16" FIR
44	18" FIR
45	14" FIR
46	13" FIR
47	25" FIR
48	25" FIR
49	19" HACKBERRY
50	CREPE MYRTLE



PARCEL INFORMATION	
PETITIONER:	FAIRFIELD DEVELOPMENT, L.P. 7200 WISCONSIN AVE, SUITE 1108 BETHESDA, MD 20814
PARCEL NUMBERS:	14920617, 14920618, & PART OF 14920629
TOTAL AREA:	6.36 ACRES
FUTURE ROW TO BE DEDICATED (WOODLAWN ROAD):	4.89 ACRES
NET AREA:	5.871 ACRES
EXISTING ZONING:	R-4(MF), R-6(MF)(CD), R-4
PROPOSED ZONING:	UR-3(CD)
PROPOSED USE:	2 APARTMENT COMPLEXES
MAXIMUM UR-3 FAR:	325 MULTI-FAMILY UNITS
MAXIMUM UR-3 FAR BONUS (PARKING DECK):	2.0
PROPOSED UR-3 FAR (INCLUDING PARKING DECK):	2.32
MINIMUM/MAXIMUM PARKING:	325/650
PROPOSED PARKING:	650 SPACES
MINIMUM SHORT TERM BICYCLE SPACES:	13 SPACES
PROPOSED HC SPACES:	16 SPACES
MINIMUM VAN HC SPACES:	2 SPACES
PROPOSED VAN HC SPACES:	16 SPACES
PROPOSED OFF-STREET SERVICE/DELIVERY SPACES:	2 SPACES
MINIMUM SHORT TERM BICYCLE SPACES:	17 SPACES
PROPOSED SHORT TERM BICYCLE SPACES:	17 SPACES
BUILDING HEIGHT:	56'-10"
MINIMUM DESIGNATED NATURAL AREA:	25,574 SF (10% OF SITE)
PROPOSED DESIGNATED NATURAL AREA:	26,247 SF (10.26% OF SITE)
TREE SAVE AREA:	6,173 SF (2.41% OF SITE)

THE JOHN R. McADAMS  
COMPANY, INC.  
ENGINEERS/PLANNERS/SURVEYORS  
6701 CARMEL ROAD, SUITE 205  
CHARLOTTE, NORTH CAROLINA 28226  
(704) 527-0800 WWW.JOHNMcADAMS.COM

REVISIONS:

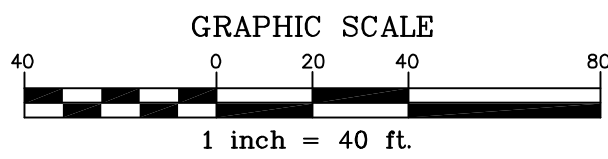
OWNER/PETITIONER:  
FAIRFIELD DEVELOPMENT, L.P.  
7200 WISCONSIN AVE., SUITE 1108  
BETHESDA, MARYLAND 20814

FAIRFIELD AT MYERS PARK  
1315 & 1351 EAST WOODLAWN ROAD  
CHARLOTTE, MECKLENBURG COUNTY, NORTH CAROLINA  
TECHNICAL DATA SHEET

PROJECT NO. FFD-06020  
FILENAME: FFD06020-RZ1  
DESIGNED BY: CSS  
DRAWN BY: CSS  
SCALE: 1"=40'  
DATE: 06-27-2008  
SHEET NO. TD-1

McADAMS

REZONING PETITION  
PETITION# 2008-075



PRELIMINARY DRAWING - NOT RELEASED FOR CONSTRUCTION





WOODLAWN ROAD ELEVATION  
WOODLAWN HOUSE, CHARLOTTE, NC.



EAST ELEVATION



WEST ELEVATION



NORTH ELEVATION

