

General Provisions
Unless more stringent standards are established by the Illustrative Schematic Plan or these Development Standards, all development standards established under the City of Charlotte Zoning Ordinance (the "Ordinance") for the MX-2 Innovative Standards Conditional Zoning District Classification shall be followed in connection with development taking place on the Site subject to the innovative Development Standards set out below.

The configuration, placements, and sizes of the buildings outlined on the Illustrative Schematic Plan is conceptual in nature and subject only to the provisions set forth below, may be altered or modified during design development and construction document phases. Parking layouts may also be modified to accommodate final building locations.

Permitted Uses
Subject to the requirements set out herein, a maximum of up to 105 "for sale" attached town homes and up to 22 single family detached dwelling units may be constructed on the site along with and incidental or accessory uses in connection therewith, which are permitted by right or under prescribed zoning conditions in the MX-2 Innovative Standards Conditional Zoning District detailed in Chapter 11 Conditional Zoning Districts, Part 2 Section 11.202 of the City of Charlotte Zoning Ordinance. Commercial uses shall not be allowed on site. Petitioner reserves the right to change products, increase or decrease the size of units, which are currently specified during design process, provided total product mix does not exceed the total allowed unit count.

Density
Gross residential density for the project will not exceed 7.5 dwelling units per acre. Open space areas shall be included in the calculations for gross residential density.

Landscaping and Buffers
The site will comply with Chapter 21 of the City Code. Proposed planting shown is conceptual only and will be subject to change upon actual site conditions and Urban Forestry Staff Approval. Internal landscaping shown on the plan is illustrative and the exact design will be determined during the detailed design and development process. The width of any required buffer may be reduced by 25% if a wall, fence, or berm is provided.

Parking
Parking will be provided which will meet or exceed applicable standard set for in Chapter 12 of the City of Charlotte Zoning Ordinance. For parking on site there will be a 20' setback between the sidewalk and the face of garage where there will not be sidewalk there will be a 20' setback from the back of curb to the face of garage.

Signs
All signs placed on site will be erected in accordance with the requirements of Chapter 13 of the City of Charlotte Zoning Ordinance.

Tree Save Areas
A minimum of 17.5% tree save shall be provided on site. All BMP's, storm water treatment, and 85% TSS removal can be included and built within this 17.5% tree save area as long as there is a minimum of 10% tree save coverage provided after BMP's, storm water treatment, run off requirements, and 85% TSS removal are developed. Within the 17.5% tree save the site's existing vegetation shall be identified and preserved to satisfy the tree save requirements specified in the City of Charlotte Tree Ordinance. Tree save areas may be located within common open space. Plantings may not be used to satisfy the tree save requirements.

Common Open Space Area
A minimum of 15% of the site shall be devoted to open space. All common open space will be maintained by a homeowners association to be established by the petitioner. Open space areas depicted on the Illustrative Schematic Plan represent the approximate location and extent of areas set aside to provide a minimum of 15% open space. The location of open space areas are considered to be preliminary based on the proposed Illustrative Schematic Plan layout and may be subject to further verification and/or configuration as more detailed design information is collected. Other open space areas will include one or more of the following types of improvements: benches, arbors, plantings, and paved trails. Petitioner reserves the right to amend and modify improvements to open space areas based on market conditions and final design criteria.

Amenity Features
The petitioner reserves the right to include amenity features on the site. Amenity features may include but are not limited to a clubhouse, pool, cabana, playground, tot lot, trails or other features. Location of amenity feature to be determined.

Trails
The developer agrees to construct walking trails in the general locations depicted on the Schematic Master plan. Trails shall be a minimum of 7' in width and shall be constructed of asphalt or other similar material as proposed by the Petitioner.

Streetscape Treatment
Petitioner shall comply with street tree planting requirements specified in Chapter 21 of the City Code.

Lighting
Any detached lighting on the site will be to a pedestrian scale and limited to 20' in height unless City Standards require street lights to be higher. Detached lights will be shielded.

Site Access
An agreement has been authorized between the Petitioner and the adjacent Charlotte Northside Church of Christ to purchase necessary ROW contingent upon rezoning approval. Adjustments to the location of street and driveway entrances may occur, as required to meet state and local agency standards and coordinate with final subdivision and site plan design requirements. Adequate sight triangles will be reserved at the proposed street connections in accordance with approved standards and ordinances. Driveway permits shall be approved by NCDOT and CDOT as required.

Amendments to Zoning Plan
Future amendments to the Illustrative Schematic Plan and these development standards may be applied for by the then Owner or Owners of the site in accordance with the provisions of Chapter 6 of the Ordinance.

Innovative Development Standards
The petitioner, in accordance with the provisions of Section 11.208, "Innovative Development Standards", may propose modifications to the following standards:
1. Street type, dimensions, and construction standards.
2. Sidewalk, curbs, and gutters.
3. Minimum lot size, lot width, and internal buffers.
4. Setbacks, side, front, and rear yards for principle and accessory structures.
5. Building separation.

It is the petitioners intent to create the opportunity to seek modification of any or all of these standards, but the details of any such proposed modification will be established and reviewed in accordance with the standard innovative process after more detailed and specific engineering of the site. The petitioner acknowledges that other standard development requirements imposed by other city ordinances, standards, policies, and appropriate design manuals will exist. Those criteria (for example, those that require buffers, regulate streets, sidewalks, trees, stormwater, and site development, etc.) will apply to the development site. This includes Chapters 6, 9, 12, 17, 18, 19, 20, and 21 of the city code. Conditions set forth in this petition are supplemental requirements imposed on the development in addition to other standards. Where conditions on this plan differ from ordinances, standards, policies, and approaches in existence at the time of formal engineering plan review submission, the stricter condition or existing requirements shall apply unless otherwise stated in these conditional notes.

Wetlands and Streams
Any jurisdictional wetlands or streams, if present, need to be protected under proper environmental permits obtained prior to their disturbance. For 401 permits contact DEHNR. For 404 permits contact the Army Corp of Engineers.

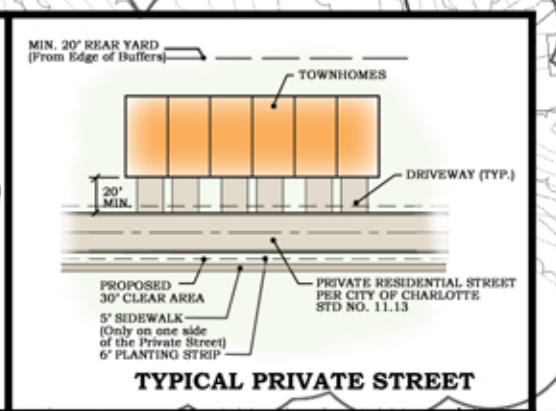
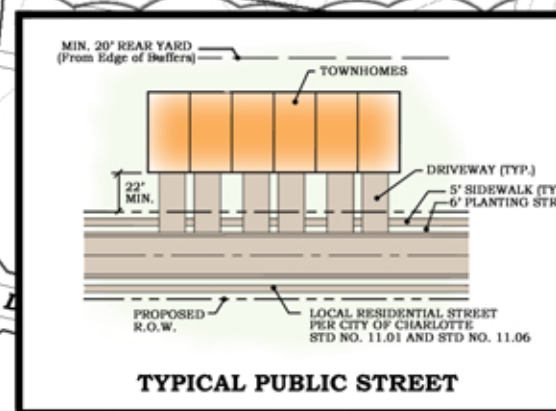
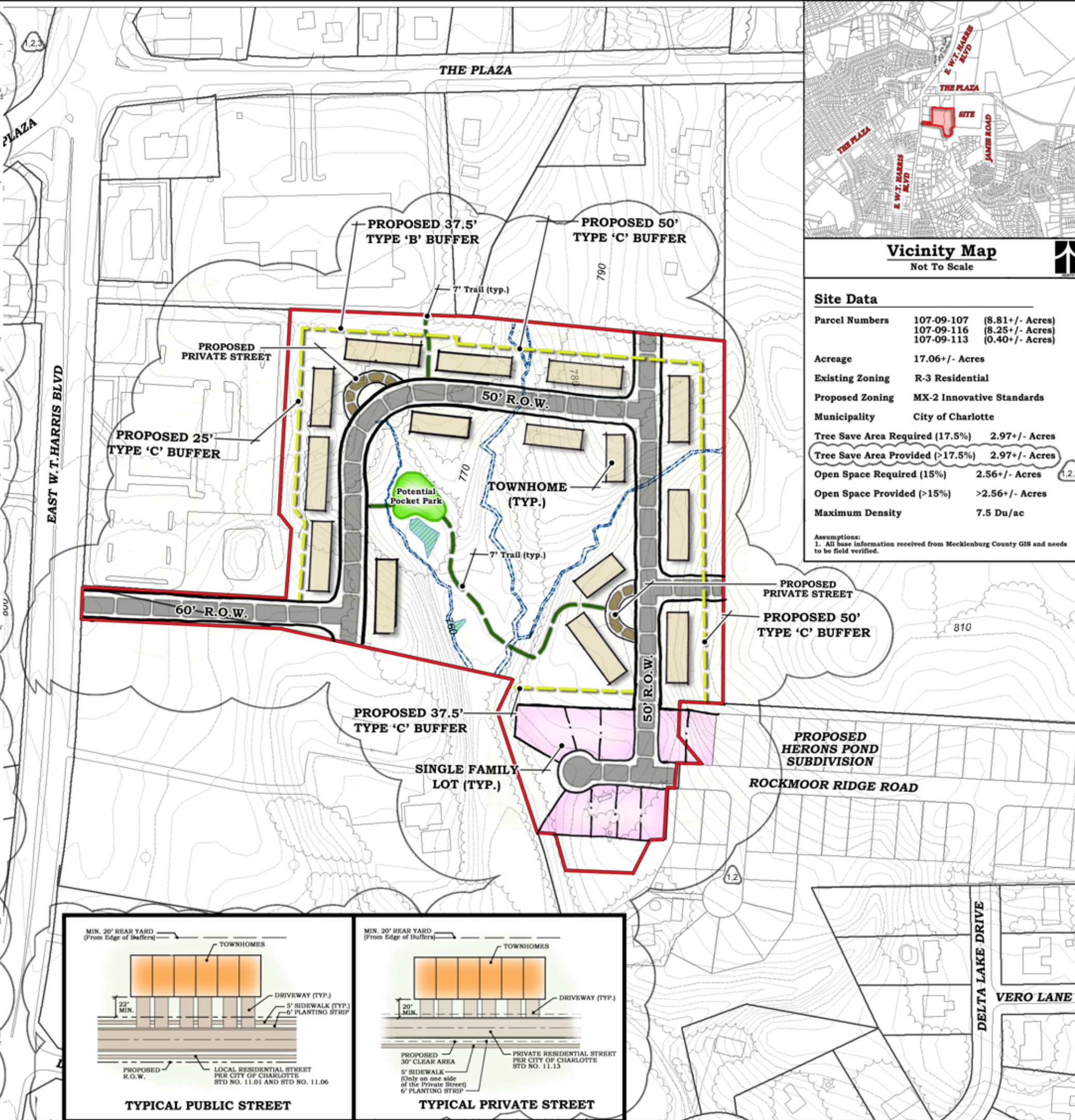
Private Streets
All private streets shall be constructed to the Charlotte-Mecklenburg Land Development Standards for Private Streets unless otherwise modified in accordance with Section 11.208, "Innovative Development Standards".

Fire Department
Petitioner will meet or exceed all current approved ordinances and codes of the Charlotte Fire Department as of date of approval. A minimum of 12' clear will be provided between all multifamily buildings.

Stormwater
Petitioner will meet or exceed all current approved ordinances for Storm water volume and peak controls, S.W.I.M. buffers, solid waste, air quality, and groundwater / wastewater services as of date of approval.

Sidewalks
Petitioner will install 5' sidewalks on both sides of public streets and one side of private streets. All sidewalks will include a minimum of a 6' planting strip.

Solid Waste
Petitioner agrees to meet all requirements as stated in Chapter 9 and Chapter 12 of the City Code regarding solid waste dumpster, compactor, and recycling areas.



Site Data		
Parcel Numbers	107-09-107	(8.81+/- Acres)
	107-09-116	(8.25+/- Acres)
	107-09-113	(0.40+/- Acres)
Acreage	17.06+/- Acres	
Existing Zoning	R-3 Residential	
Proposed Zoning	MX-2 Innovative Standards	
Municipality	City of Charlotte	
Tree Save Area Required (17.5%)	2.97+/- Acres	
Tree Save Area Provided (>17.5%)	2.97+/- Acres	
Open Space Required (15%)	2.56+/- Acres	
Open Space Provided (>15%)	>2.56+/- Acres	
Maximum Density	7.5 Du/ac	
Assumptions: 1. All base information received from Mecklenburg County GIS and needs to be field verified.		



ESP Associates, P.A.
P.O. Box 7030
Charlotte, NC 28241
3575 Lakeshore Blvd.
Fort Mill, SC 29708
704.583.4949 (NC)
803.802.2449 (SC)
www.espsouth.com



LOCKARD REED Development Group

This drawing and/or the design shown are the property of ESP Associates, P.A. The reproduction, alteration, copying or other use of this drawing without their written consent is prohibited and any infringement will be subject to legal action.
ESP Associates, P.A.

CLIENT

LOCKARD REED DEVELOPMENT GROUP

5605 77 CENTER DRIVE
SUITE 275
CHARLOTTE, NC 28217
704.295.1500 (p)
704.295.1501 (f)

SHEET TITLE

Technical Data Sheet

PROJECT

Delta Lake Site

Rezoning 2007-010



NORTH

PROJECT LOCATION

Charlotte, NC

GRAPHIC SCALE

100 0 50 100 200

1 INCH = 100 FT.

PROJECT NUMBER	UF57.100		
DRAWING NAME	UF57 - Technical Data Sheet, ptd		
DATE	September 21, 2006		
DRAWN BY	JE / MM		
CHECKED BY	PT		
ESP / CLIENT REVISION			
NO.	DATE	BY	REVISION
	12/16/06		Original Submittal Date.
AGENCY / SUBMITTAL REVISION			
NO.	DATE	BY	REVISION
1	12/19/06	MM	Revised per staff comments.
2	01/24/07	MM	Revised per staff comments.
3	02/17/07	MM	Revised per staff comments.

1 OF 1 SHEET