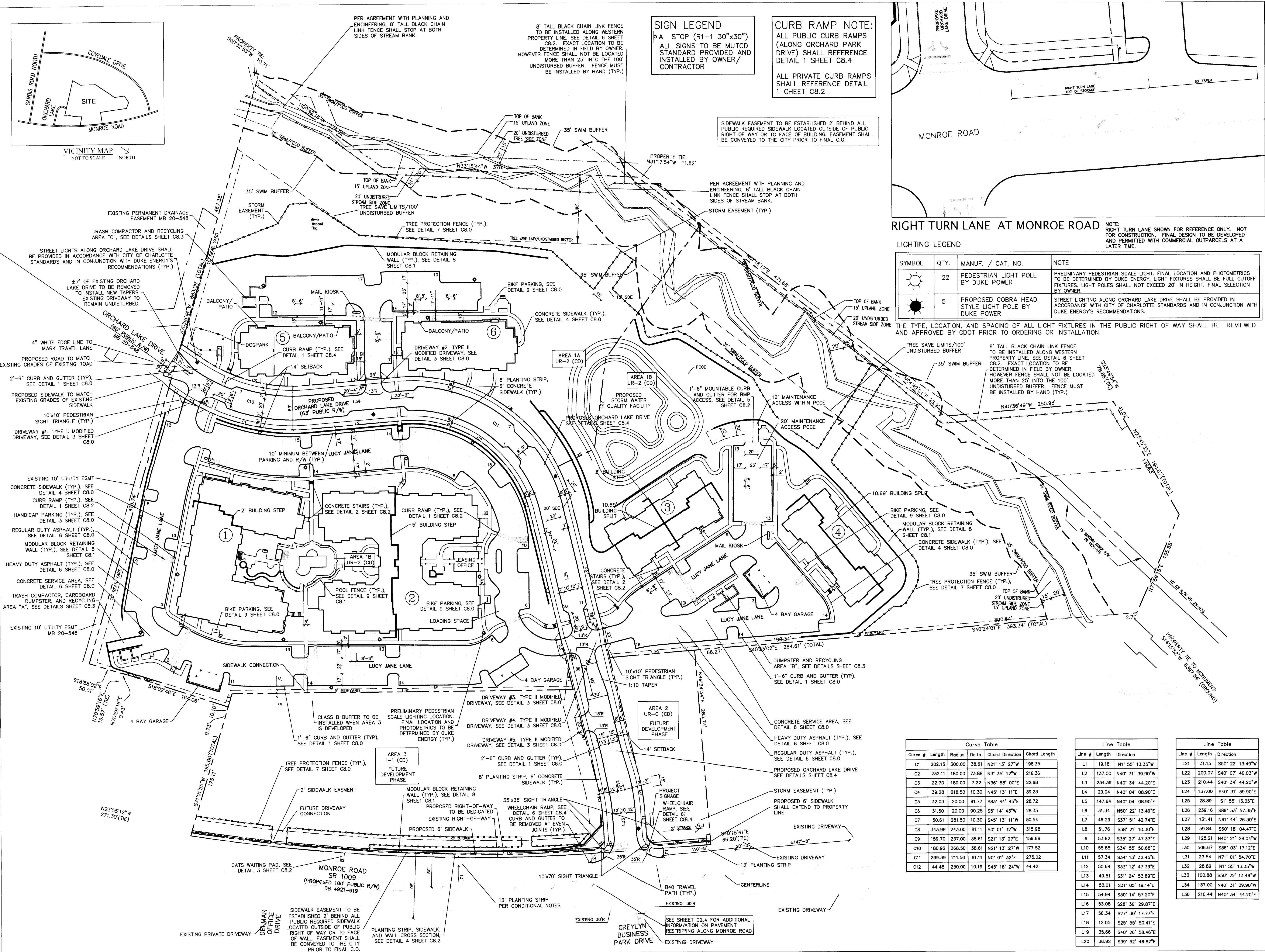


VICINITY MAP  
NOT TO SCALE



**SIGN LEGEND**  
A STOP (R1-1 30"x30")  
ALL SIGNS TO BE MUTCD  
STANDARD PROVIDED AND  
INSTALLED BY OWNER/  
CONTRACTOR

**CURB RAMP NOTE:**  
ALL PUBLIC CURB RAMP  
(ALONG ORCHARD PARK  
DRIVE) SHALL REFERENCE  
DETAIL 1 SHEET C8.4  
  
ALL PRIVATE CURB RAMP  
SHALL REFERENCE DETAIL  
1 SHEET C8.2

SIDEWALK EASEMENT TO BE ESTABLISHED 2' BEHIND ALL  
PUBLIC REQUIRED SIDEWALK LOCATED OUTSIDE OF PUBLIC  
RIGHT OF WAY OR TO FACE OF BUILDING. EASEMENT SHALL  
BE CONVEYED TO THE CITY PRIOR TO FINAL C.O.

PER AGREEMENT WITH PLANNING AND  
ENGINEERING, 8' TALL BLACK CHAIN  
LINK FENCE SHALL STOP AT BOTH  
SIDES OF STREAM BANK.

8' TALL BLACK CHAIN LINK FENCE  
TO BE INSTALLED ALONG WESTERN  
PROPERTY LINE. SEE DETAIL 6 SHEET  
C8.2. EXACT LOCATION TO BE  
DETERMINED IN FIELD BY OWNER.  
HOWEVER FENCE SHALL NOT BE LOCATED  
MORE THAN 25' INTO THE 100'  
UNDISTURBED BUFFER. FENCE MUST  
BE INSTALLED BY HAND (TYP.)

**RIGHT TURN LANE AT MONROE ROAD**

NOTE:  
RIGHT TURN LANE SHOWN FOR REFERENCE ONLY. NOT  
FOR CONSTRUCTION. FINAL DESIGN TO BE DEVELOPED  
AND PERMITTED WITH COMMERCIAL OUTPARCELS AT A  
LATER TIME.

**LIGHTING LEGEND**

SYMBOL	QTY.	MANUF. / CAT. NO.	NOTE
	22	PEDESTRIAN LIGHT POLE BY DUKE POWER	PRELIMINARY PEDESTRIAN SCALE LIGHT. FINAL LOCATION AND PHOTOMETRICS TO BE DETERMINED BY DUKE ENERGY. LIGHT FIXTURES SHALL BE FULL CUTOFF FIXTURES. LIGHT POLES SHALL NOT EXCEED 20' IN HEIGHT. FINAL SELECTION BY OWNER.
	5	PROPOSED COBRA HEAD STYLE LIGHT POLE BY DUKE POWER	STREET LIGHTING ALONG ORCHARD LAKE DRIVE SHALL BE PROVIDED IN ACCORDANCE WITH CITY OF CHARLOTTE STANDARDS AND IN CONJUNCTION WITH DUKE ENERGY'S RECOMMENDATIONS.

THE TYPE, LOCATION, AND SPACING OF ALL LIGHT FIXTURES IN THE PUBLIC RIGHT OF WAY SHALL BE REVIEWED  
AND APPROVED BY CDOT PRIOR TO ORDERING OR INSTALLATION.

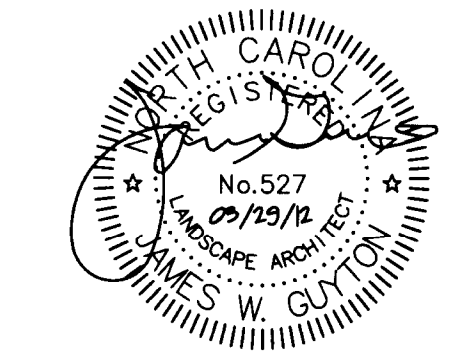
**design resource group**

- landscape architecture
- civil engineering
- urban design
- land planning
- traffic engineering
- transportation planning

2459 wilkinson boulevard, suite 200  
charlotte, nc 28208  
p 704.343.0608 f 704.358.3093  
www.drgp.com

**ORCHARD PARK**  
CHARLOTTE, NORTH CAROLINA  
  
CASHIEL ROCK INVESTORS  
8514 MCALPINE PARKWAY, SUITE 190  
CHARLOTTE, NC 28211

PRELIMINARY PLANNED  
MULTI-FAMILY SUBDIVISION  
APPROVAL  
CHARLOTTE-MECKLENBURG PLANNING DEPARTMENT  
5/23/12  
CONSTRUCTION  
DOCUMENTS



30 0 30 60  
SCALE: 1" = 60'

PROJECT # 337-001  
DRAWN BY BG  
CHECKED BY TH

**SITE PLAN**

JULY 15, 2011

REVISIONS:  
1. 9/12/11 REV. PER CMPC COMMENTS  
2. 12/9/11 REV. PER CMPC COMMENTS  
3. 03/29/12 RTAP

C2.0

Curve Table					
Curve #	Length	Radius	Delta	Chord Direction	Chord Length
C1	202.15	300.00	38.61	N21° 13' 27"W	198.35
C2	232.11	180.00	73.88	N3° 35' 12"W	216.36
C3	22.70	180.00	7.22	N36° 58' 00"E	22.88
C4	39.28	218.50	10.30	N45° 13' 11"E	39.23
C5	32.03	20.00	91.77	S83° 44' 45"E	28.72
C6	31.50	20.00	90.25	S5° 14' 43"W	28.35
C7	50.61	281.50	10.30	S45° 13' 11"W	50.54
C8	343.99	243.00	81.11	S0° 01' 32"W	315.98
C9	159.70	237.00	38.61	S21° 13' 27"E	156.69
C10	180.92	268.50	38.61	N21° 13' 27"W	177.52
C11	299.39	211.50	81.11	N0° 01' 32"E	275.02
C12	44.48	250.00	10.18	S45° 16' 24"W	44.42

Line Table		
Line #	Length	Direction
L1	19.18	N1° 55' 13.35"W
L2	137.00	N40° 31' 39.90"W
L3	234.39	N40° 34' 44.20"E
L4	29.04	N40° 04' 08.90"E
L5	147.64	N40° 04' 08.90"E
L6	31.34	N50° 22' 13.49"E
L7	46.29	S37° 51' 42.74"E
L8	51.76	S38° 21' 10.30"E
L9	53.62	S35° 27' 47.33"E
L10	55.85	S34° 55' 50.68"E
L11	57.34	S34° 13' 32.45"E
L12	50.64	S33° 12' 47.39"E
L13	49.51	S31° 24' 53.89"E
L14	53.01	S31° 05' 19.14"E
L15	54.94	S30° 14' 57.20"E
L16	53.08	S28° 36' 29.87"E
L17	56.34	S27° 30' 17.77"E
L18	12.05	S25° 55' 50.41"E
L19	35.68	S40° 26' 58.46"E
L20	36.92	S39° 52' 46.87"E

Line Table		
Line #	Length	Direction
L21	31.15	S50° 22' 13.49"W
L22	200.07	S40° 07' 46.03"W
L23	210.44	S40° 34' 44.20"W
L24	137.00	S40° 31' 39.90"E
L25	28.89	S1° 55' 13.35"E
L26	239.16	S89° 53' 57.35"E
L27	131.41	N61° 44' 26.30"E
L28	59.84	S60° 18' 04.47"E
L29	125.21	N40° 21' 28.04"W
L30	506.67	S36° 03' 17.12"E
L31	23.54	N71° 01' 54.70"E
L32	28.89	N1° 55' 13.35"W
L33	100.88	S50° 22' 13.49"W
L34	137.00	N40° 31' 39.90"W
L36	210.44	N40° 34' 44.20"E