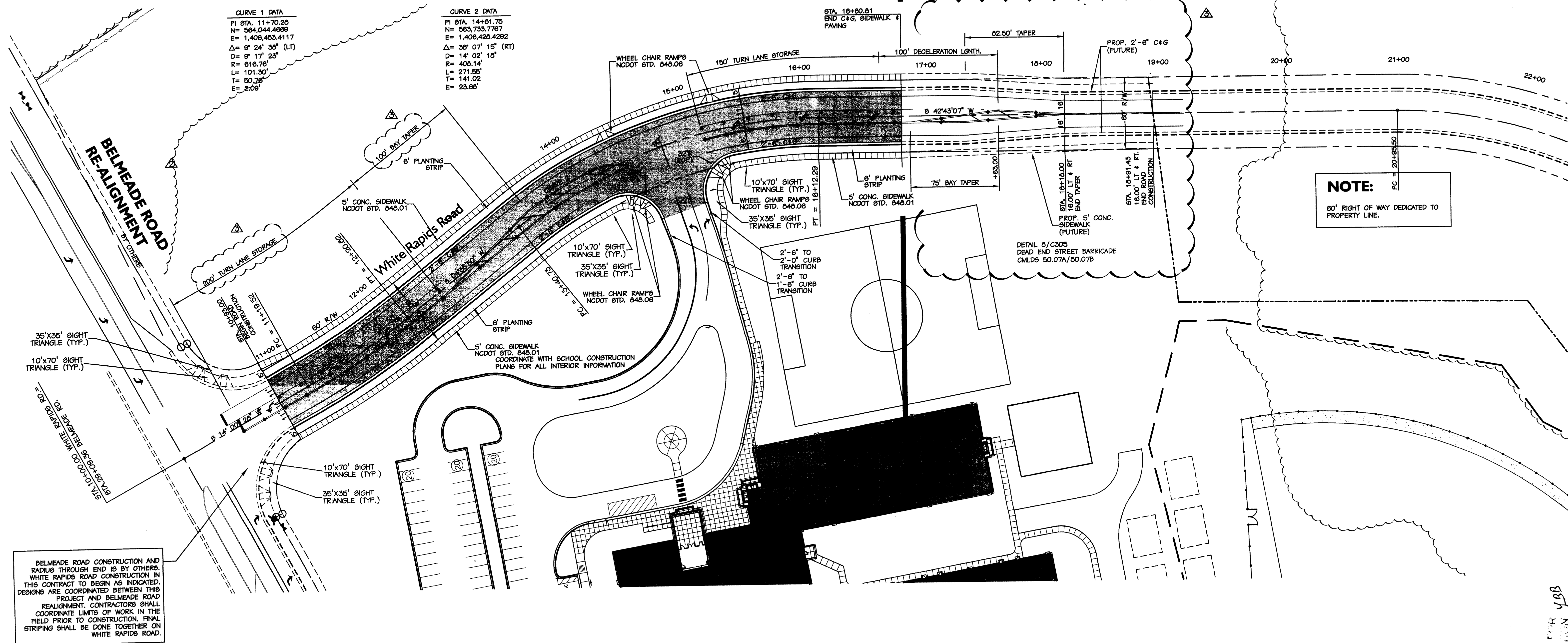


NOTE:
WHITE RAPIDS ROAD SHALL BE CONSTRUCTED IN TWO PHASES. PHASE ONE SHALL OCCUR AS PART OF THE ELEMENTARY SCHOOL OPENING. PHASE TWO SHALL BE DESIGNED & PERMITTED UNDER A SEPARATE PACKAGE AND CONSTRUCTED WITH BELMEADE MIDDLE SCHOOL. DESIGN REFLECTS FUTURE BUILD OUT CONDITION.
PHASE ONE CONSTRUCTION SHALL END PRIOR TO TAPER BEYOND FUTURE FULL LEFT TURN LANE INTO THE SCHOOL.

SEE SHEET C101.2 & C401.3 FOR GRADING AND DRAINAGE INFORMATION
SEE SHEET C300.1 FOR PAVEMENT MARKING LAYOUT PLAN.

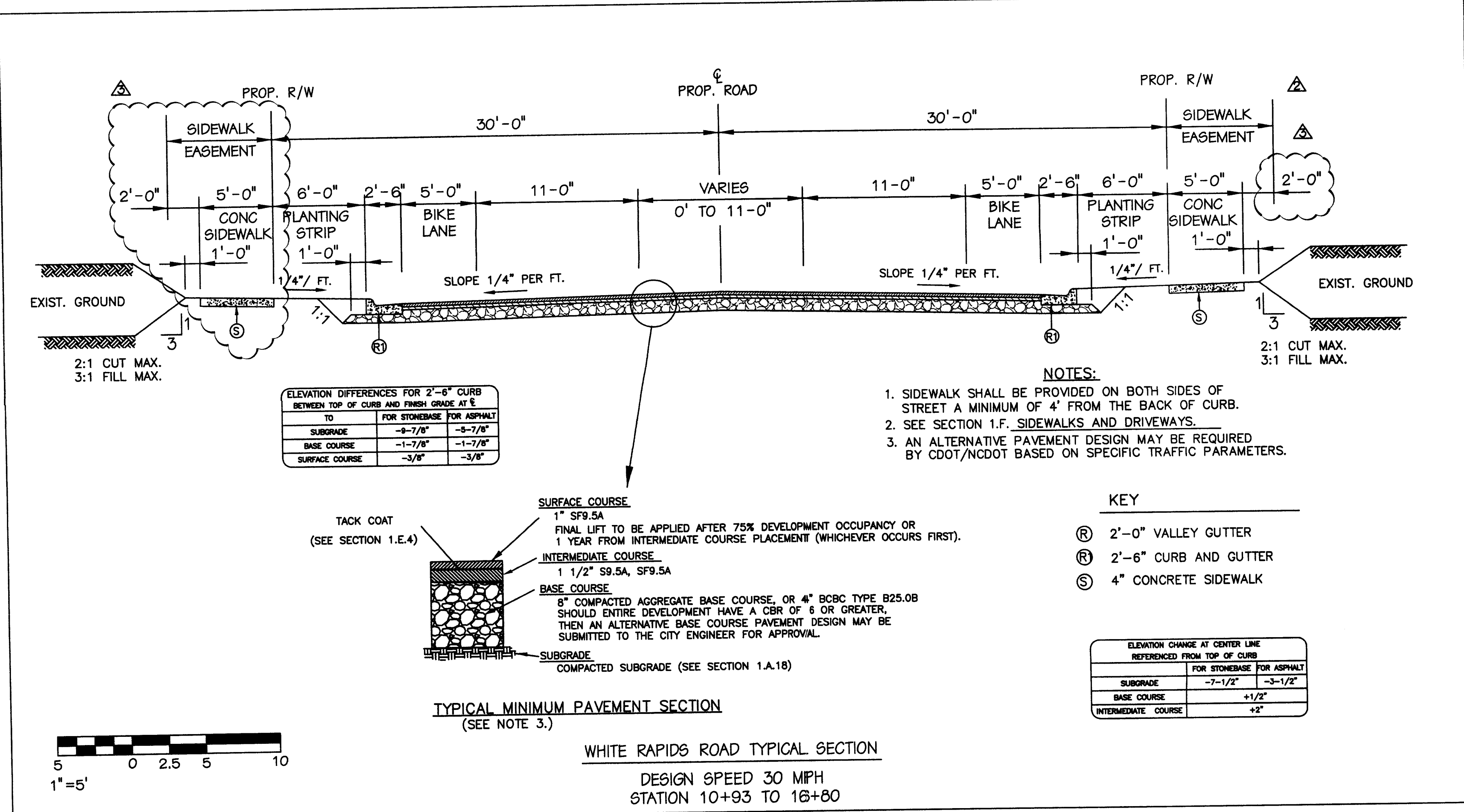
PHASE ONE
FUTURE PHASE TWO

THIS PROPERTY IS OWNED BY CROSLAND CONSTRUCTION. EASEMENTS AND PERMISSION HAS BEEN GRANTED TO WORK ON THIS PROPERTY.



NOTE:
60' RIGHT OF WAY DEDICATED TO PROPERTY LINE.

BELMEADE ROAD CONSTRUCTION AND RADIUS THROUGH END IS BY OTHERS. WHITE RAPIDS ROAD CONSTRUCTION IN THIS CONTRACT TO BEGIN AS INDICATED. DESIGNS ARE COORDINATED BETWEEN THIS PROJECT AND BELMEADE ROAD REALIGNMENT. CONTRACTORS SHALL COORDINATE LIMITS OF WORK IN THE FIELD PRIOR TO CONSTRUCTION. FINAL STRIPING SHALL BE DONE TOGETHER ON WHITE RAPIDS ROAD.

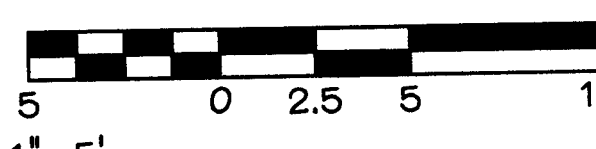
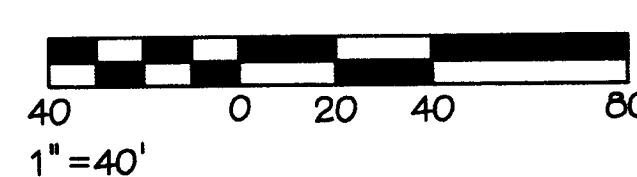


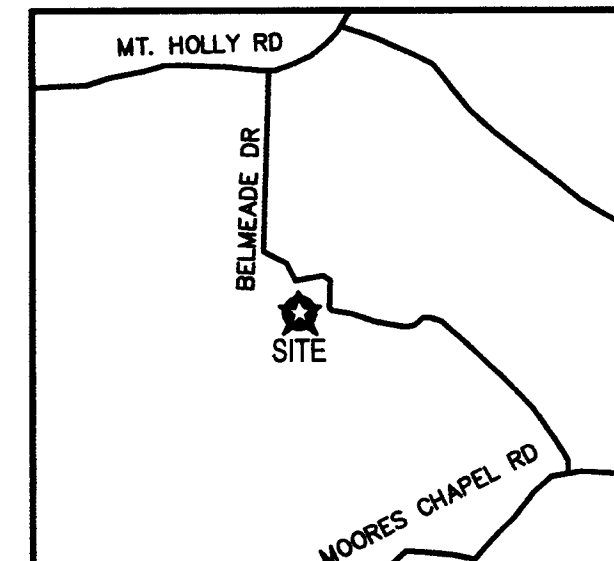
TO	FOR STONEBASE	FOR ASPHALT
SUBGRADE	-6'-7/8"	-5'-7/8"
BASE COURSE	-1'-7/8"	-1'-7/8"
SURFACE COURSE	-3/8"	-3/8"

- NOTES:**
- SIDEWALK SHALL BE PROVIDED ON BOTH SIDES OF STREET A MINIMUM OF 4' FROM THE BACK OF CURB.
 - SEE SECTION 1.F. SIDEWALKS AND DRIVEWAYS.
 - AN ALTERNATIVE PAVEMENT DESIGN MAY BE REQUIRED BY CDDT/NCDOT BASED ON SPECIFIC TRAFFIC PARAMETERS.

- KEY**
- ② 2'-0" VALLEY GUTTER
 - ③ 2'-6" CURB AND GUTTER
 - ④ 4" CONCRETE SIDEWALK

ELEVATION CHANGE AT CENTER LINE REFERENCED FROM TOP OF CURB	
FOR STONEBASE	FOR ASPHALT
SUBGRADE	-7'-1/2"
BASE COURSE	-3'-1/2"
INTERMEDIATE COURSE	+2"





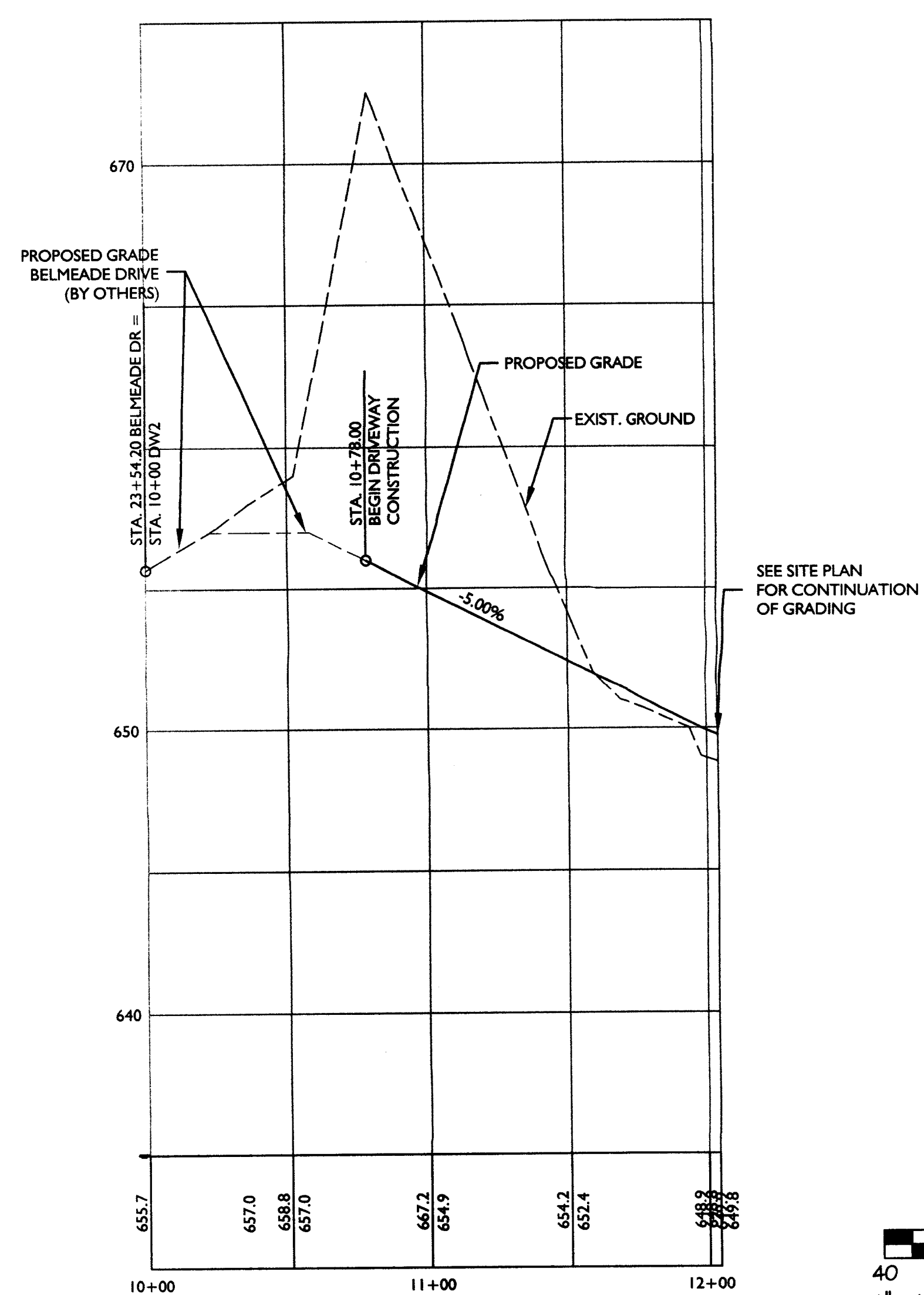
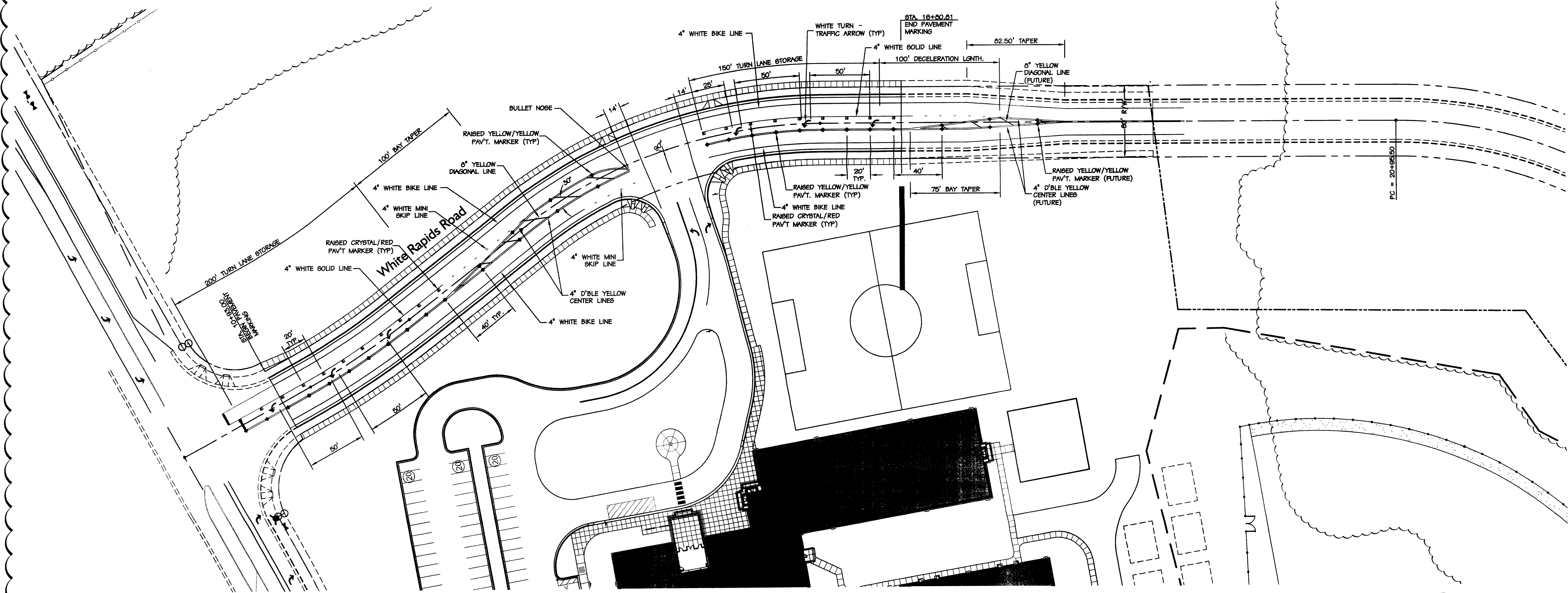
Vicinity Map - NTS

NOTE:
WHITE RAPIDS ROAD SHALL BE CONSTRUCTED IN TWO PHASES. PHASE ONE SHALL OCCUR AS PART OF THE ELEMENTARY SCHOOL OPENING. PHASE TWO SHALL BE DESIGNED & PERMITTED UNDER A SEPARATE PACKAGE AND CONSTRUCTED WITH BELMEADE MIDDLE SCHOOL DESIGN REFLECTS FUTURE BUILD OUT CONDITION.
PHASE ONE CONSTRUCTION SHALL END PRIOR TO TAPER BEYOND FUTURE FULL LEFT TURN LANE INTO THE SCHOOL.

NOTE:
ALL PAVEMENT MARKINGS SHALL BE THERMOPLASTIC.

- NOTE:**
1. PAVEMENT MARKINGS SHALL BE RETROSPECTIVE THERMOPLASTIC, CONFORMING TO CDOT STD.
 2. RAISED PAVEMENT MARKERS SHALL BE IN INSTALLED IN ACCORDANCE WITH NCDOT STD. 1251.01.

PHASE ONE
FUTURE PHASE TWO



DW 2 -Profile (Bus Lot Profile)

