

SHEET INDEX

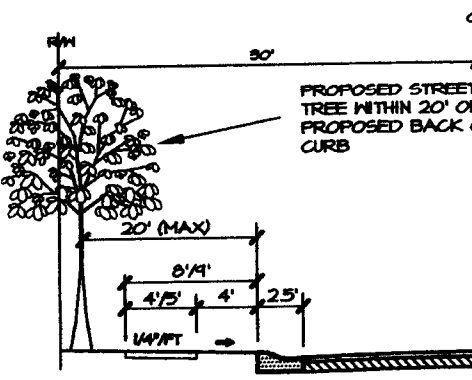
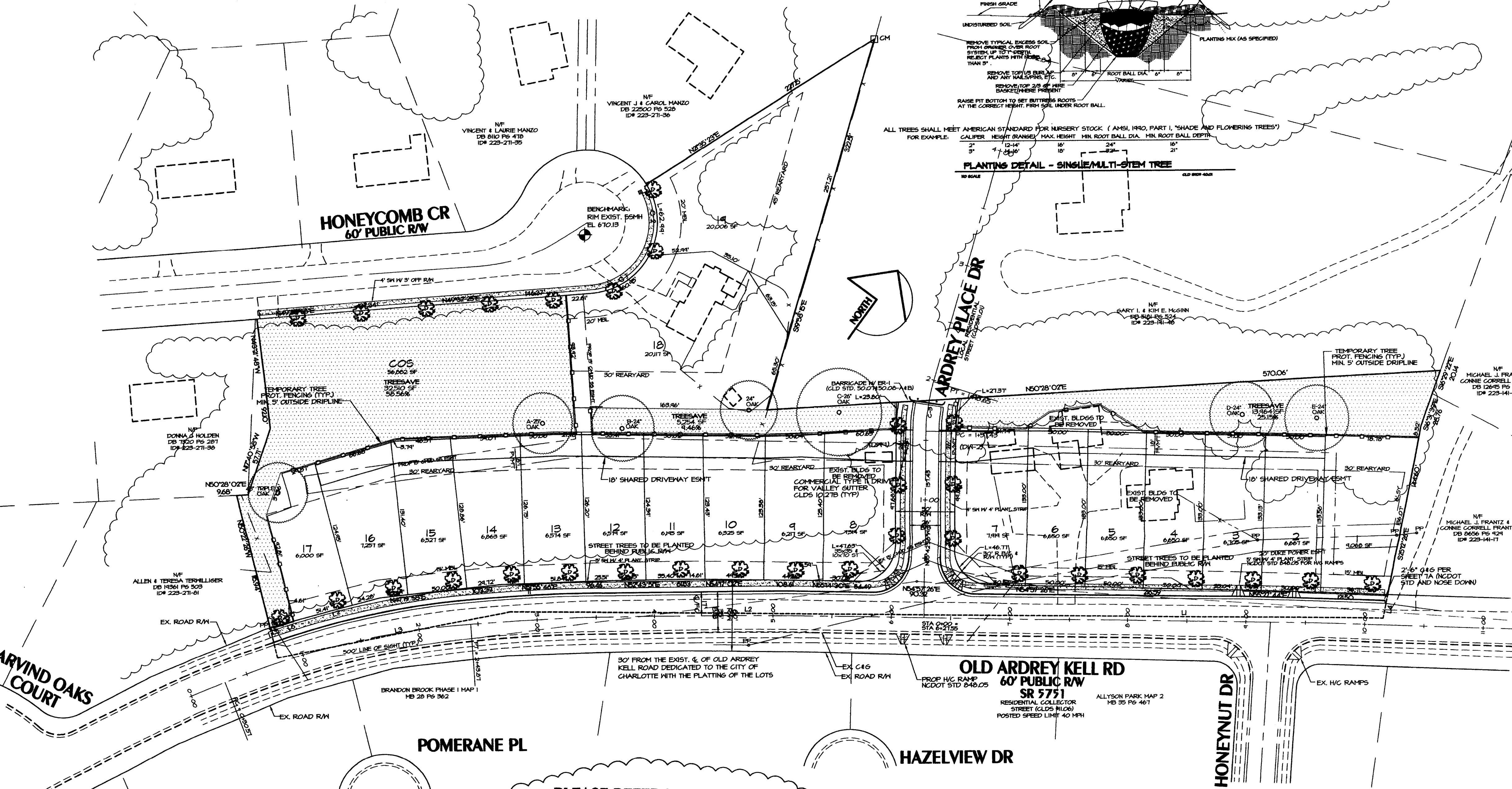
| SHEET No. | SHEET Title |
|-----------|---|
| 1 | Preliminary Subdivision Site/Landscape Plan |
| 2 | Storm Drainage and Grading Plan |
| 3 | Erosion Control Plan |
| 4 | Erosion Control Plan (Home Const) |
| 5 | Roadway & Storm Drainage Profiles/Site Construction Details |
| 6 | Drainage Area Map |
| 7a/b/c | Old Ardrey Kell Road Improvements |

CURVE TABLE

| CURVE | LENGTH | RADIUS | CHORD | BEARING |
|-------|--------|--------|-------|-------------|
| C-1 | 64.70 | 50.00 | 44.68 | N83°38'26"E |
| C-2 | 58.81 | 60.00 | 56.48 | N40°22'57"W |
| C-3 | 40.22 | 50.00 | 40.09 | N75°03'37"W |

LINE TABLE

| LINE | LENGTH | BEARING |
|------|--------|-------------|
| L1 | 354.27 | S54°03'34"W |
| L2 | 400.73 | S54°03'34"W |
| L3 | 200.00 | S42°42'34"W |
| L4 | 20.20 | S2°12'27"E |
| L5 | 15.41 | S37°28'25"W |
| L6 | 0.83 | S38°05'45"W |
| L7 | 79.47 | N97°02'34"E |



TREE LOCATION DETAIL

TREE REQUIREMENTS

| FRONTAGE | LG TREES | SM TREES | STREET NAME |
|----------|----------|----------|--------------------|
| 150 | 10" | 0 | OLD ARDREY KELL RD |
| 350 | 7 | 0 | ARDREY PLACE DRIVE |
| 300 | 6" | 0 | HONEYCOMB CR |
| 1610 | 33 | 0 | TOTAL |

SEE DEVELOPMENT DATA FOR BREAKDOWN
ROADWAY: 1610 LF
STREET TREES REQUIRED: 1610 / 50 = 32.2 (LARGE MATURING)
STREET TREES PROPOSED: 33 LARGE, 0 SMALL
* USE EXISTING TREES THAT QUALIFY, WHERE ALLOWED
(1) LARGE MATURING TREES SHALL BE FROM APPROVED URBAN FORESTRY SPECIES LIST.
DIFFERENT SPECIES OF TREES SHALL BE USED ON DIFFERENT STREET
NO HERITAGE TREES EXIST ON THIS PROPERTY

SPECIMEN TREES

| DESCRIPTION | TOTAL (SF) | TREE CANOPY (SF) | TREE GIRTH (INCHES) |
|-------------|------------|------------------|---------------------|
| A 24" OAK | 25 | 1465 | 1095 |
| B 24" OAK | 21 | 2240 | 1032 |
| C 24" OAK | 36 | 4071 | 1481 |
| D 24" OAK | 21 | 2240 | 1032 |
| E 24" OAK | 21 | 2240 | 1032 |
| TOTAL | 1263 | 7596 | 5746 (6.09) |

TREE PROTECTION NOTES

NOTE: NO SOIL DISTURBANCE OR COMPACTION CONSTRUCTION MATERIALS ALLOWED IN THE TREE PROTECTION ZONE.
TREE BARRICADES MUST BE INSTALLED BEFORE ANY DEMOLITION/GRADING/GRADING/CONSTRUCTION AND NOT REMOVED UNTIL AFTER FINAL INSPECTION BY THE CITY INSPECTOR.
TREE PROTECTION BARRICADES MUST MEET OR EXCEED TREE ORDNANCE STANDARDS (IN CITY OF CHARLOTTE TREE ORDNANCE GUIDELINES APPENDIX).
BEFORE GRADING/CONSTRUCTION BEGINS, CALL 704-336-4824 FOR INSPECTION OF TREE PROTECTION BARRICADES BY THE CITY INSPECTOR.
VIOLATIONS OF TREE PROTECTION REQUIREMENTS ARE SUBJECT TO FINES AND/OR IMMEDIATE CORRECTIVE ACTION/ATTENTION.

LEGEND

- TREE PROTECTION/SM BUFFER FENCE
- PROPOSED TREE SAVE AREA

TREE PROTECTION DETAIL

NO SCALE

LANDSCAPE PLAN NOTES:

MINIMUM TREE SIZE AT PLANTING IS 2" CALIPER, 8' TALL, IF SINGLE STEM, MINIMUM 8' TALL AND 3 STEMS MAXIMUM IF MULTI-STEM. MULCH IS REQUIRED. STAKING/STAKING IS OPTIONAL.
FOR NEW PLANTING AREAS, REMOVE ALL PAVEMENT, GRAVEL, SUB-BASE AND CONSTRUCTION DEBRIS. REMOVE EXISTING SOIL AND ADD 24" NEW TOPSOIL/ORGANIC TOPSOIL AND AMEND THE TOP 24" OF EXISTING SOIL TO MEET TOPSOIL/PLANTING MIX STANDARDS FOR TREES (WITHIN ENTIRE MINIMUM AREA OF 214 SQUARE FEET PER TREE). CALL 704-336-4824 FOR AN INSPECTION OF SOIL BEFORE PLANTING TREES.
ALL STAKING AND 2/8 OF HIRE BASKET MUST BE CUT AWAY AND REMOVED FROM ROOT BALL PRIOR TO BACKFILLING PLANTING PIT. REMOVE TOP 1/5 OF THE BURLAP FROM ROOT BALL.
PLEASE CALL 704-336-4824 FOR FINAL INSPECTION OF TREES 1 TO 10 DAYS BEFORE THE CERTIFICATE OF OCCUPANCY IS ISSUED.
PREFERRED TREE SPACING IS:
30' FOR SMALL MATURING TREES (COPPERHAWK IS PLANTED IN GROUPS) 40' FOR LARGE MATURING TREES (20' MINIMUM IF PLANTED IN GROUPS)
ADJUST TREE PLANTING LOCATIONS TO AVOID UNDERGROUND UTILITIES. PLACE 15-20' OFF SIDEWALK AND STORM DRAINAGE LINES, 10-15' OFF GAS, WATER, PHONE AND UNDERGROUND ELECTRICAL LINES.
EXISTING HEALTHY TREES WITHIN 25 FEET OF THE RIGHT-OF-WAY LINE MAY BE CREDITED TOWARD THE PERMETER REQUIREMENT IF SHOWN LANDSCAPE PLAN BY DEVELOPER OR PRESERVED HEALTHY.
LARGE MATURING TREES MAY NOT BE PLANTED WHERE OVERHEAD DISTRIBUTION OR TRANSMISSION LINES EXIST. IF TREES CONFLICT WITH POWERLINES OR SIGNS, CALL URSAM FORESTER TO RESOLVE BEFORE PLANTING.

NOTES:

- REMOVE HIRE OR HIRE TREE FROM BALL.
- SOAK ROOT BALL AND PLANT PIT IMMEDIATELY AFTER INSTALLATION.
- SEE ATTACHED LANDSCAPE CONSTRUCTION STD FOR OTHER PLANTING REQUIREMENTS.
- STAKING REQUIRED FOR LEANING TREES OR AS REQUIRED BY CONTRACT. SEE GENERAL NOTES SEC. 4000 - TREE PLANTING PART 3 FOR PL. PL.

ALL TREES SHALL MEET AMERICAN STANDARD FOR NURSERY STOCK (ANSI, 1910, PART 1, 'SHADE AND FLOWERING TREES') FOR EXAMPLE:
CALIPER HEIGHT (RANGE) MAX. HEIGHT MIN. ROOT BALL DIA. MIN. ROOT BALL DEPTH
2" 12-14' 10' 24" 18"
3" 14-16' 12' 24" 24"
4" 16-18' 14' 24" 30"
5" 18-20' 16' 24" 36"
6" 20-22' 18' 24" 42"
7" 22-24' 20' 24" 48"
8" 24-26' 22' 24" 54"
9" 26-28' 24' 24" 60"
10" 28-30' 26' 24" 66"
11" 30-32' 28' 24" 72"
12" 32-34' 30' 24" 78"
13" 34-36' 32' 24" 84"
14" 36-38' 34' 24" 90"
15" 38-40' 36' 24" 96"
16" 40-42' 38' 24" 102"
17" 42-44' 40' 24" 108"
18" 44-46' 42' 24" 114"
19" 46-48' 44' 24" 120"
20" 48-50' 46' 24" 126"
21" 50-52' 48' 24" 132"
22" 52-54' 50' 24" 138"
23" 54-56' 52' 24" 144"
24" 56-58' 54' 24" 150"
25" 58-60' 56' 24" 156"
26" 60-62' 58' 24" 162"
27" 62-64' 60' 24" 168"
28" 64-66' 62' 24" 174"
29" 66-68' 64' 24" 180"
30" 68-70' 66' 24" 186"
31" 70-72' 68' 24" 192"
32" 72-74' 70' 24" 198"
33" 74-76' 72' 24" 204"
34" 76-78' 74' 24" 210"
35" 78-80' 76' 24" 216"
36" 80-82' 78' 24" 222"
37" 82-84' 80' 24" 228"
38" 84-86' 82' 24" 234"
39" 86-88' 84' 24" 240"
40" 88-90' 86' 24" 246"
41" 90-92' 88' 24" 252"
42" 92-94' 90' 24" 258"
43" 94-96' 92' 24" 264"
44" 96-98' 94' 24" 270"
45" 98-100' 96' 24" 276"
46" 100-102' 98' 24" 282"
47" 102-104' 100' 24" 288"
48" 104-106' 102' 24" 294"
49" 106-108' 104' 24" 300"
50" 108-110' 106' 24" 306"
51" 110-112' 108' 24" 312"
52" 112-114' 110' 24" 318"
53" 114-116' 112' 24" 324"
54" 116-118' 114' 24" 330"
55" 118-120' 116' 24" 336"
56" 120-122' 118' 24" 342"
57" 122-124' 120' 24" 348"
58" 124-126' 122' 24" 354"
59" 126-128' 124' 24" 360"
60" 128-130' 126' 24" 366"
61" 130-132' 128' 24" 372"
62" 132-134' 130' 24" 378"
63" 134-136' 132' 24" 384"
64" 136-138' 134' 24" 390"
65" 138-140' 136' 24" 396"
66" 140-142' 138' 24" 402"
67" 142-144' 140' 24" 408"
68" 144-146' 142' 24" 414"
69" 146-148' 144' 24" 420"
70" 148-150' 146' 24" 426"
71" 150-152' 148' 24" 432"
72" 152-154' 150' 24" 438"
73" 154-156' 152' 24" 444"
74" 156-158' 154' 24" 450"
75" 158-160' 156' 24" 456"
76" 160-162' 158' 24" 462"
77" 162-164' 160' 24" 468"
78" 164-166' 162' 24" 474"
79" 166-168' 164' 24" 480"
80" 168-170' 166' 24" 486"
81" 170-172' 168' 24" 492"
82" 172-174' 170' 24" 498"
83" 174-176' 172' 24" 504"
84" 176-178' 174' 24" 510"
85" 178-180' 176' 24" 516"
86" 180-182' 178' 24" 522"
87" 182-184' 180' 24" 528"
88" 184-186' 182' 24" 534"
89" 186-188' 184' 24" 540"
90" 188-190' 186' 24" 546"
91" 190-192' 188' 24" 552"
92" 192-194' 190' 24" 558"
93" 194-196' 192' 24" 564"
94" 196-198' 194' 24" 570"
95" 198-200' 196' 24" 576"
96" 200-202' 198' 24" 582"
97" 202-204' 200' 24" 588"
98" 204-206' 202' 24" 594"
99" 206-208' 204' 24" 600"
100" 208-210' 206' 24" 606"
101" 210-212' 208' 24" 612"
102" 212-214' 210' 24" 618"
103" 214-216' 212' 24" 624"
104" 216-218' 214' 24" 630"
105" 218-220' 216' 24" 636"
106" 220-222' 218' 24" 642"
107" 222-224' 220' 24" 648"
108" 224-226' 222' 24" 654"
109" 226-228' 224' 24" 660"
110" 228-230' 226' 24" 666"
111" 230-232' 228' 24" 672"
112" 232-234' 230' 24" 678"
113" 234-236' 232' 24" 684"
114" 236-238' 234' 24" 690"
115" 238-240' 236' 24" 696"
116" 240-242' 238' 24" 702"
117" 242-244' 240' 24" 708"
118" 244-246' 242' 24" 714"
119" 246-248' 244' 24" 720"
120" 248-250' 246' 24" 726"
121" 250-252' 248' 24" 732"
122" 252-254' 250' 24" 738"
123" 254-256' 252' 24" 744"
124" 256-258' 254' 24" 750"
125" 258-260' 256' 24" 756"
126" 260-262' 258' 24" 762"
127" 262-264' 260' 24" 768"
128" 264-266' 262' 24" 774"
129" 266-268' 264' 24" 780"
130" 268-270' 266' 24" 786"
131" 270-272' 268' 24" 792"
132" 272-274' 270' 24" 798"
133" 274-276' 272' 24" 804"
134" 276-278' 274' 24" 810"
135" 278-280' 276' 24" 816"
136" 280-282' 278' 24" 822"
137" 282-284' 280' 24" 828"
138" 284-286' 282' 24" 834"
139" 286-288' 284' 24" 840"
140" 288-290' 286' 24" 846"
141" 290-292' 288' 24" 852"
142" 292-294' 290' 24" 858"
143" 294-296' 292' 24" 864"
144" 296-298' 294' 24" 870"
145" 298-300' 296' 24" 876"
146" 300-302' 298' 24" 882"
147" 302-304' 300' 24" 888"
148" 304-306' 302' 24" 894"
149" 306-308' 304' 24" 900"
150" 308-310' 306' 24" 906"
151" 310-312' 308' 24" 912"
152" 312-314' 310' 24" 918"
153" 314-316' 312' 24" 924"
154" 316-318' 314' 24" 930"
155" 318-320' 316' 24" 936"
156" 320-322' 318' 24" 942"
157" 322-324' 320' 24" 948"
158" 324-326' 322' 24" 954"
159" 326-328' 324' 24" 960"
160" 328-330' 326' 24" 966"
161" 330-332' 328' 24" 972"
162" 332-334' 330' 24" 978"
163" 334-336' 332' 24" 984"
164" 336-338' 334' 24" 990"
165" 338-340' 336' 24" 996"
166" 340-342' 338' 24" 1002"
167" 342-344' 340' 24" 1008"
168" 344-346' 342' 24" 1014"
169" 346-348' 344' 24" 1020"
170" 348-350' 346' 24" 1026"
171" 350-352' 348' 24" 1032"
172" 352-354' 350' 24" 1038"
173" 354-356' 352' 24" 1044"
174" 356-358' 354' 24" 1050"
175" 358-360' 356' 24" 1056"
176" 360-362' 358' 24" 1062"
177" 362-364' 360' 24" 1068"
178" 364-366' 362' 24" 1074"
179" 366-368' 364' 24" 1080"
180" 368-370' 366' 24" 1086"
181" 370-372' 368' 24" 1092"
182" 372-374' 370' 24" 1098"
183" 374-376' 372' 24" 1104"
184" 376-378' 374' 24" 1110"
185" 378-380' 376' 24" 1116"
186" 380-382' 378' 24" 1122"
187" 382-384' 380' 24" 1128"
188" 384-386' 382' 24" 1134"
189" 386-388' 384' 24" 1140"
190" 388-390' 386' 24" 1146"
191" 390-392' 388' 24" 1152"
192" 392-394' 390' 24" 1158"
193" 394-396' 392' 24" 1164"
194" 396-398' 394' 24" 1170"
195" 398-400' 396' 24" 1176"
196" 400-402' 398' 24" 1182"
197" 402-404' 400' 24" 1188"
198" 404-406' 402' 24" 1194"
199" 406-408' 404' 24" 1200"
200" 408-410' 406' 24" 1206"
201" 410-412' 408' 24" 1212"
202" 412-414' 410' 24" 1218"
203" 414-416' 412' 24" 1224"
204" 416-418' 414' 24" 1230"
205" 418-420' 416' 24" 1236"
206" 420-422' 418' 24" 1242"
207" 422-424' 420' 24" 1248"
208" 424-426' 422' 24" 1254"
209" 426-428' 424' 24" 1260"
210" 428-430' 426' 24" 1266"
211" 430-432' 428' 24" 1272"
212" 432-434' 430' 24" 1278"
213" 434-436' 432' 24" 1284"
214" 436-438' 434' 24" 1290"
215" 438-440' 436' 24" 1296"
216" 440-442' 438' 24" 1302"
217" 442-444' 440' 24" 1308"
218" 444-446' 442' 24" 1314"
219" 446-448' 444' 24" 1320"
220" 448-450' 446' 24" 1326"
221" 450-452' 448' 24" 1332"
222" 452-454' 450' 24" 1338"
223" 454-456' 452' 24" 1344"
224" 456-458' 454' 24" 1350"
225" 458-460' 456' 24" 1356"
226" 460-462' 458' 24" 1362"
227" 462-464' 460' 24" 1368"
228" 464-466' 462' 24" 1374"
229" 466-468' 464' 24" 1380"
230" 468-470' 466' 24" 1386"
231" 470-472' 468' 24" 1392"
232" 472-474' 470' 24" 1398"
233" 474-476' 472' 24" 1404"
234" 476-478' 474' 24" 1410"
235" 478-480' 476' 24" 1416"
236" 480-482' 478' 24" 1422"
237" 482-484' 480' 24" 1428"
238" 484-486' 482' 24" 1434"
239" 486-488' 484' 24" 1440"
240" 488-490' 486' 24" 1446"
241" 490-492' 488' 24" 1452"
242" 492-494' 490' 24" 1458"
243" 494-496' 492' 24" 1464"
244" 496-498' 494' 24" 1470"
245" 498-500' 496' 24" 1476"
246" 500-502' 498' 24" 1482"
247" 502-504' 500' 24" 1488"
248" 504-506' 502' 24" 1494"
249" 506-508' 504' 24" 1500"
250" 508-510' 506' 24" 1506"
251" 510-512' 508' 24" 1512"
252" 512-514' 510' 24" 1518"
253" 514-516' 512' 24" 1524"
254" 516-518' 514' 24" 1530"
255" 518-520' 516' 24" 1536"
256" 520-522' 518' 24" 1542"
257" 522-524' 520' 24" 1548"
258" 524-526' 522' 24" 1554"
259" 526-528' 524' 24" 1560"
260" 528-530' 526' 24" 1566"
261" 530-532' 528' 24" 1572"
262" 532-534' 530' 24" 1578"
263" 534-536' 532' 24" 1584"
264" 536-538' 534' 24" 1590"
265" 538-540' 536' 24" 1596"
266" 540-542' 538' 24" 1602"
267" 542-544' 540' 24" 1608"
268" 544-546' 542' 24" 1614"
269" 546-548' 544' 24" 1620"
270" 548-550' 546' 24" 1626"
271" 550-552' 548' 24" 1632"
272" 552-554' 550' 24" 1638"
273" 554-556' 552' 24" 1644"
274" 556-558' 554' 24" 1650"
275" 558-560' 556' 24" 1656"
276" 560-562' 558' 24" 1662"
277" 562-564' 560' 24" 1668"
278" 564-566' 562' 24" 1674"
279" 566-568' 564' 24" 1680"
280" 568-570' 566' 24" 1686"
281" 570-572' 568' 24" 1692"
282" 572-574' 570' 24" 1698"
283" 574-576' 572' 24" 1704"
284" 576-578' 574' 24" 1710"
285" 578-580' 576' 24" 1716"
286" 580-582' 578' 24" 1722"
287" 582-584' 580' 24" 1728"
288" 584-586' 582' 24" 1734"
289" 586-588' 584' 24" 1740"
290" 588-590' 586' 24" 1746"
291" 590-592' 588' 24" 1752"
292" 592-594' 590' 24" 1758"
293" 594-596' 592' 24" 1764"
294" 596-598' 594' 24" 1770"
295" 598-600' 596' 24" 1776"
296" 600-602' 598' 24" 1782"
297" 602-604' 600' 24" 1788"
298" 604-606' 602' 24" 1794"
299" 606-608' 604' 24" 1800"
300" 608-610' 606' 24" 1806"
301" 610-612' 608' 24" 1812"
302" 612-614' 610' 24" 1818"
303" 614-616' 612' 24" 1824"
304" 616-618' 614' 24" 1830"
305" 618-620' 616' 24" 1836"
306" 620-622' 618' 24" 1842"
307" 622-624' 620' 24" 1848"
308" 624-626' 622' 24" 1854"
309" 626-628' 624' 24" 1860"
310" 628-630' 626' 24" 1866"
311" 630-632' 628' 24" 1872"
312" 632-634' 630' 24" 1878"
313" 634-636' 632' 24" 1884"
314" 636-638' 634' 24" 1890"
315" 638-640' 636' 24" 1896"
316" 640-642' 638' 24" 1902"
317" 642-644' 640' 24" 1908"
318" 644-646' 642' 24" 1914"
319" 6