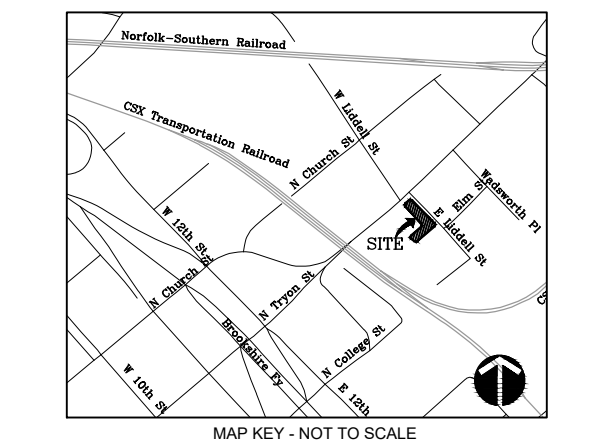


LEGEND

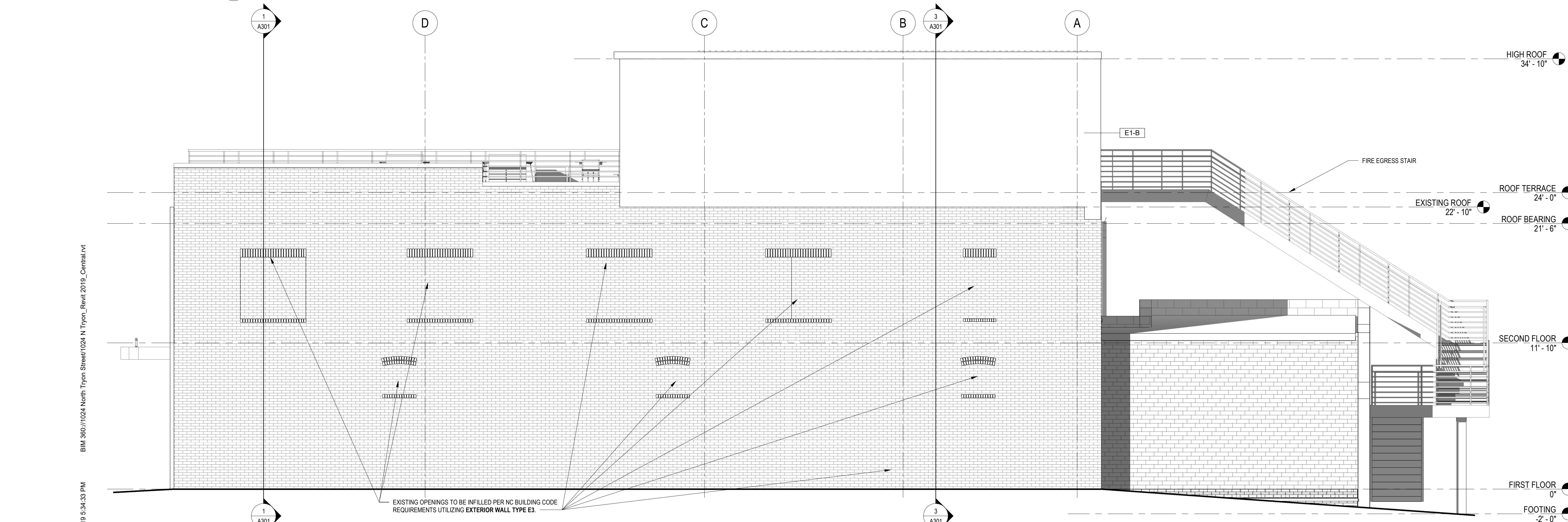
The legend defines three symbols used in the site plan:

- VEHICULAR CIRCULATION:** Represented by a horizontal line with five vertical bars in the center, flanked by two large, hollow, arrow-like shapes pointing left and right.
- PEDESTRIAN CIRCULATION:** Represented by a horizontal line with five small, solid circles in the center.
- SITE BOUNDARY:** Represented by a horizontal line with four small, solid squares in the center.

[illegible]



SOUTH ELEVATION
SCALE: 1/4" = 1'-0"
R.E. = 1/A101



EAST ELEVATION
SCALE: 1/4" = 1'-0"
R.E. = 1/A101

- ### ELEVATION NOTES
- SEE DISCIPLINE SHEETS FOR DISCIPLINE SPECIFIC NOTES
1. ADDRESSING SIGNAGE TO BE LOCATED ON THE SIDE OF THE BUILDING FROM WHERE THE BUILDING IS ADDRESSED (ONE SIDE ONLY). PROVIDE BUILDING ADDRESS IN 6" HIGH LETTERS TO BE APPROVED BY FIRE MARSHALL.
 2. FACE OF SLAB SHALL NOT BE EXPOSED AT SLOPED EXTERIOR PAVING CONDITIONS. COORDINATE EXT. PAVING CONDITIONS WITH CIVIL, TYP.
 3. COORDINATE ALL DOWNSPOUT TIE-INS WITH CIVIL DRAWINGS. PROVIDE SPLASH BLOCKS FOR DOWNSPOUTS W/OUT TIE-INS.
 4. VERTICAL CONTROL JOINTS ARE ILLUSTRATED FOR REFERENCE PURPOSES IN BUILDING ELEVATIONS. CJS ARE RECOMMENDED WHERE TRANSITIONS IN BRICK HEIGHT OCCUR, AT THE CORNERS OF LARGE OPENINGS, ALL INSIDE CORNERS, WITHIN 10' OF OUTSIDE CORNERS AND A MAXIMUM OF 30' O.C. MASONRY CONTRACTOR TO PROVIDE HORIZONTAL AND VERTICAL EXPANSION JOINTS IN BRICKWORK PER TECHNICAL NOTES 18A AS PUBLISHED BY THE BRICK INDUSTRY ASSOCIATION.
 5. NO MASONRY CORE HOLES SHALL BE EXPOSED, TYP. CLOSURE (SOLID CORE) MASONRY SHALL BE USED WHERE CORE HOLES WOULD OTHERWISE BE EXPOSED TO ELEMENTS.
 6. EXPOSED STEEL LINTELS AND BREAK METAL TO BE PAINTED TO MATCH ADJACENT SURFACE UNLESS OTHERWISE NOTES, TYP.
 7. ALL PENETRATIONS, INCLUDING WINDOWS AND DOORS, SHALL BE SEALED TO THE BACKUP WALL AT THE PRIMARY MOISTURE BARRIER.
 8. ALL CAULKING IS TO MATCH ADJACENT SURFACES.
 9. PROVIDE SOLID BLOCKING WITHIN WALL CAVITY SEGMENTS BEHIND ALL EXTERIOR LIGHTS AND SIGNAGE.

EXTERIOR COLOR LEGEND

PAINT COLORS TO BE COORDINATED DURING CONSTRUCTION WITH ARCHITECT, OWNER AND HISTORIC LANDMARKS COMMISSION.

EXTERIOR SYMBOL LEGEND

SEE DISCIPLINE SHEETS FOR DISCIPLINE SPECIFIC SYMBOLS

11	DOOR TAG	SPOT ELEVATION MARKERS
11	WINDOW TAG (REFER TO A602 FOR WINDOW SIZES AND INFORMATION)	LEVEL MARKER
D.S.	DOWNSPOUT LOCATION	CENTER LINE
CJ	CONTROL JOINT LOCATION	

DETAIL 1 A301 SECTION DETAIL

DETAIL 1 A301 ENLARGED VIEW

E1-A0 EXTERIOR ASSEMBLY TYPE. SEE A030 FOR ASSEMBLY TYPES

P1 EXTERIOR FINISH COLOR. SEE COLOR LEGEND

neighboring concepts

ARCHITECTURE ■ PLANNING ■ INTERIORS

1635 West Trade Street, Suite 1A
Charlotte, North Carolina 28216
T:704.374.0916 F:704.342.3808

www.neighboringconcepts.com

This drawing and the design shown are the property of Neighboring Concepts, PLLC. The reproduction, copying, or other use of this drawing without their written consent is prohibited and any infringement will be subject to legal action.

©2017 Neighboring Concepts, PLLC

LandDesign.

223 NORTH GRAHAM STREET
CHARLOTTE, NC 28202
704.333.0325
WWW.LANDDESIGN.COM
NC ENG'G FORM LICENSE # C-0658



**REZONING PETITION
NUMBER 2019-143**

**1024 N. TRYON ST.
CHARLOTTE, NC 28217**

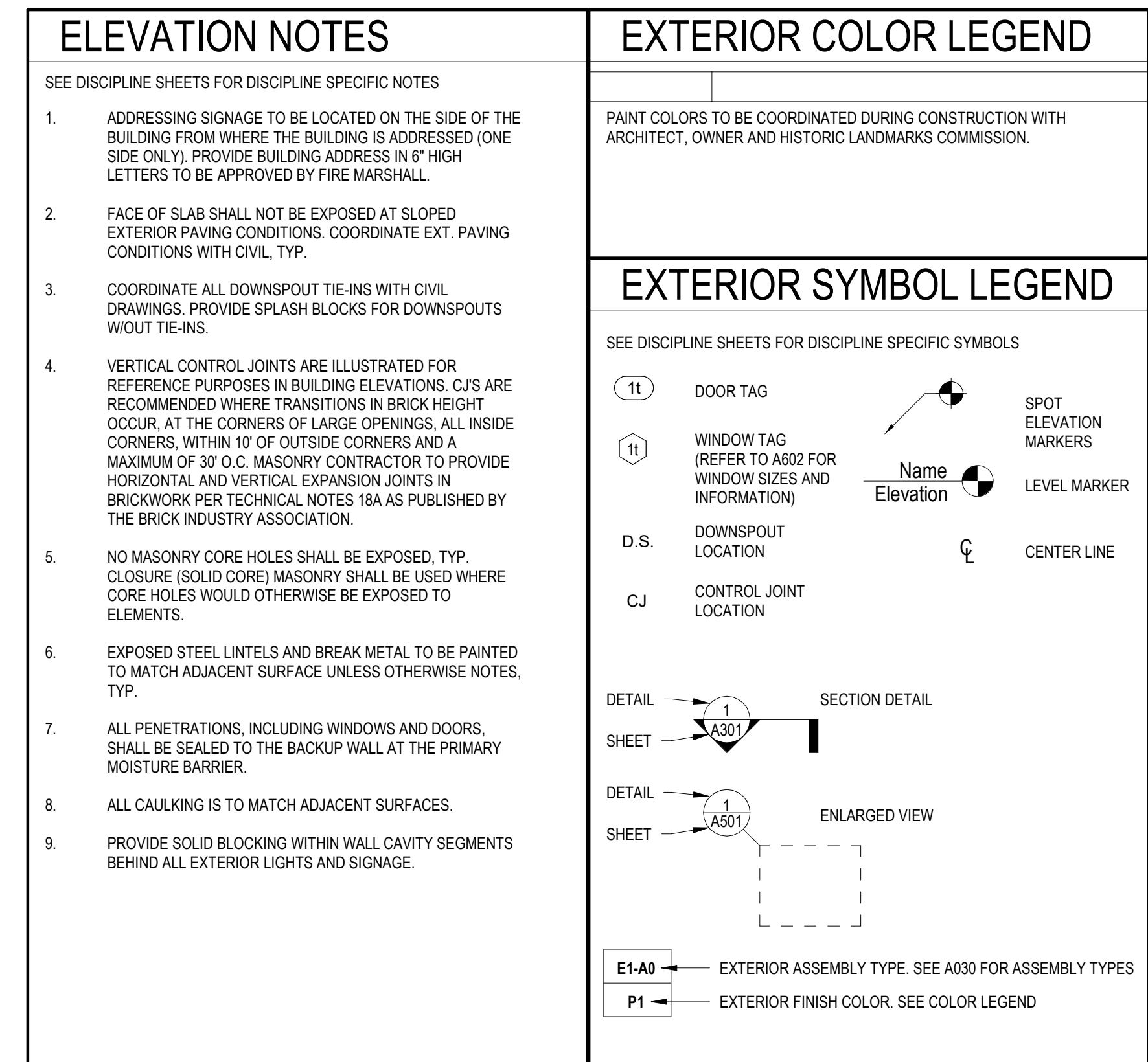
No.	Description	Date
1	REZONING SUBMITTAL	09/17/2019
2	REZONING SUBMITTAL	12/12/2019

ARCHITECTURAL ELEVATIONS

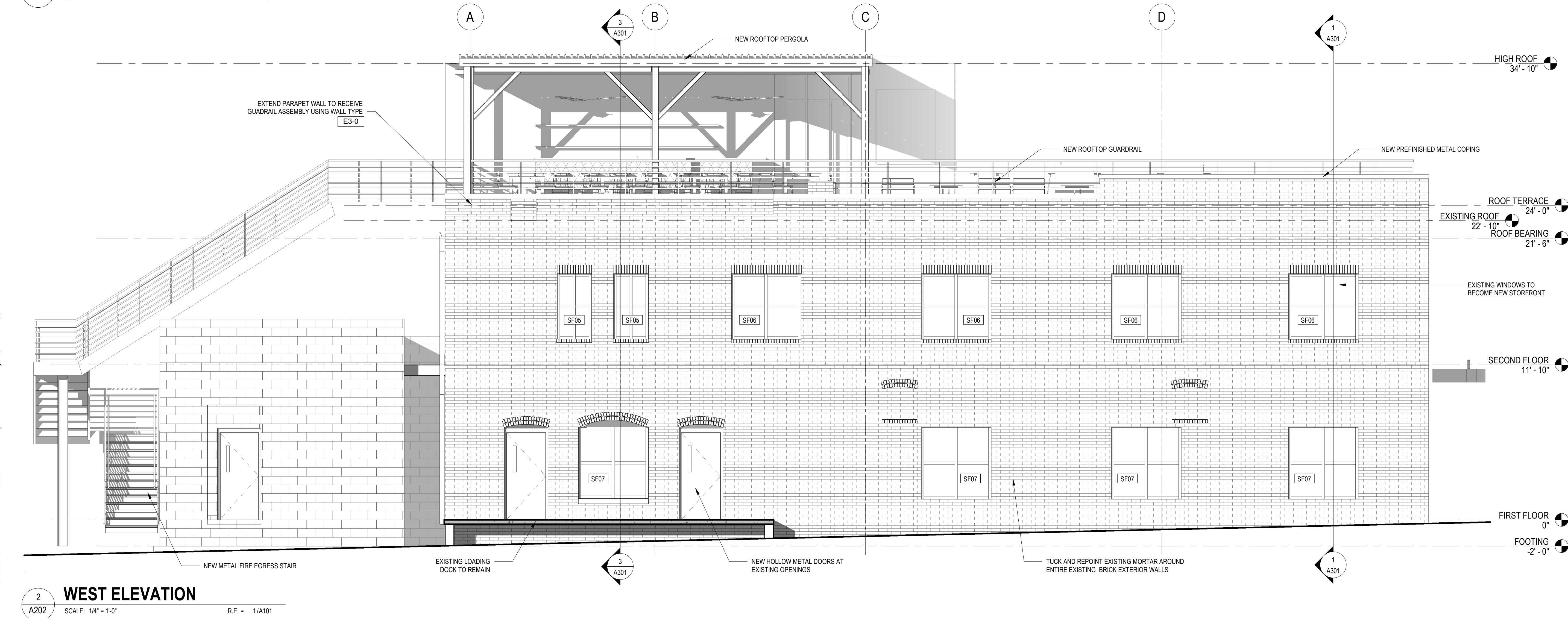
ISSUE DATE December 12, 2019

CHECKED NLD
SHEET BY MRO
PROJECT NUMBER LD# 1019346

RZ-3



11/27/2019 5:34:55 PM BIM 360://1024 North Tryon Street/1024 N Tryon_Revit 2019_Central.rvt



}neighboring concepts

ARCHITECTURE ■ PLANNING ■ INTERIORS

1635 West Trade Street, Suite 1A
Charlotte, North Carolina 28216
T:704.374.0916 F:704.342.3808

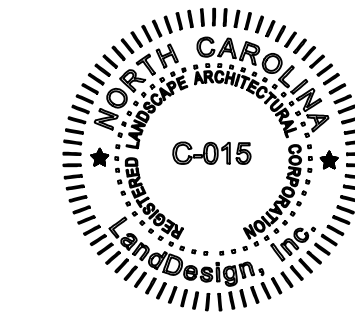
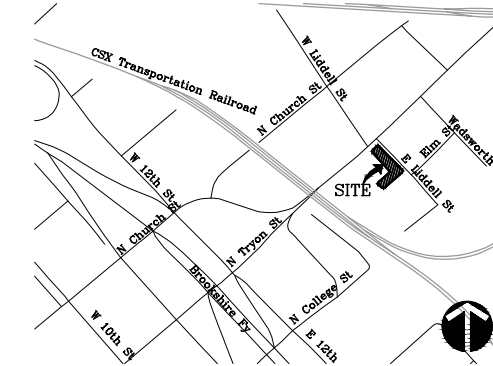
www.neighboringconcepts.com

This drawing and the design shown are the property of
Neighboring Concepts, PLLC.
The reproduction, copying, or other use of this drawing
without their written consent is prohibited and any
infringement will be subject to legal action.

©2017
Neighboring Concepts, PLLC

LandDesign.

223 NORTH GRAHAM STREET
CHARLOTTE, NC 28202
704.333.0325
WWW.LANDDESIGN.COM
NC ENG. FIRM LICENSE # C-065



**REZONING PETITION
NUMBER 2019-143**

**1024 N. TRYON ST.
CHARLOTTE, NC 28217**

[illegible]

ARCHITECTURAL ELEVATIONS

ISSUE DATE December 12, 2019

✓ CHECKED

SHEET BY

—

PROJECT NUMBER
LD# 101934

RZ-4