

LEGEND



Kimley»»Horn

PRELIMINARY
DOCUMENT

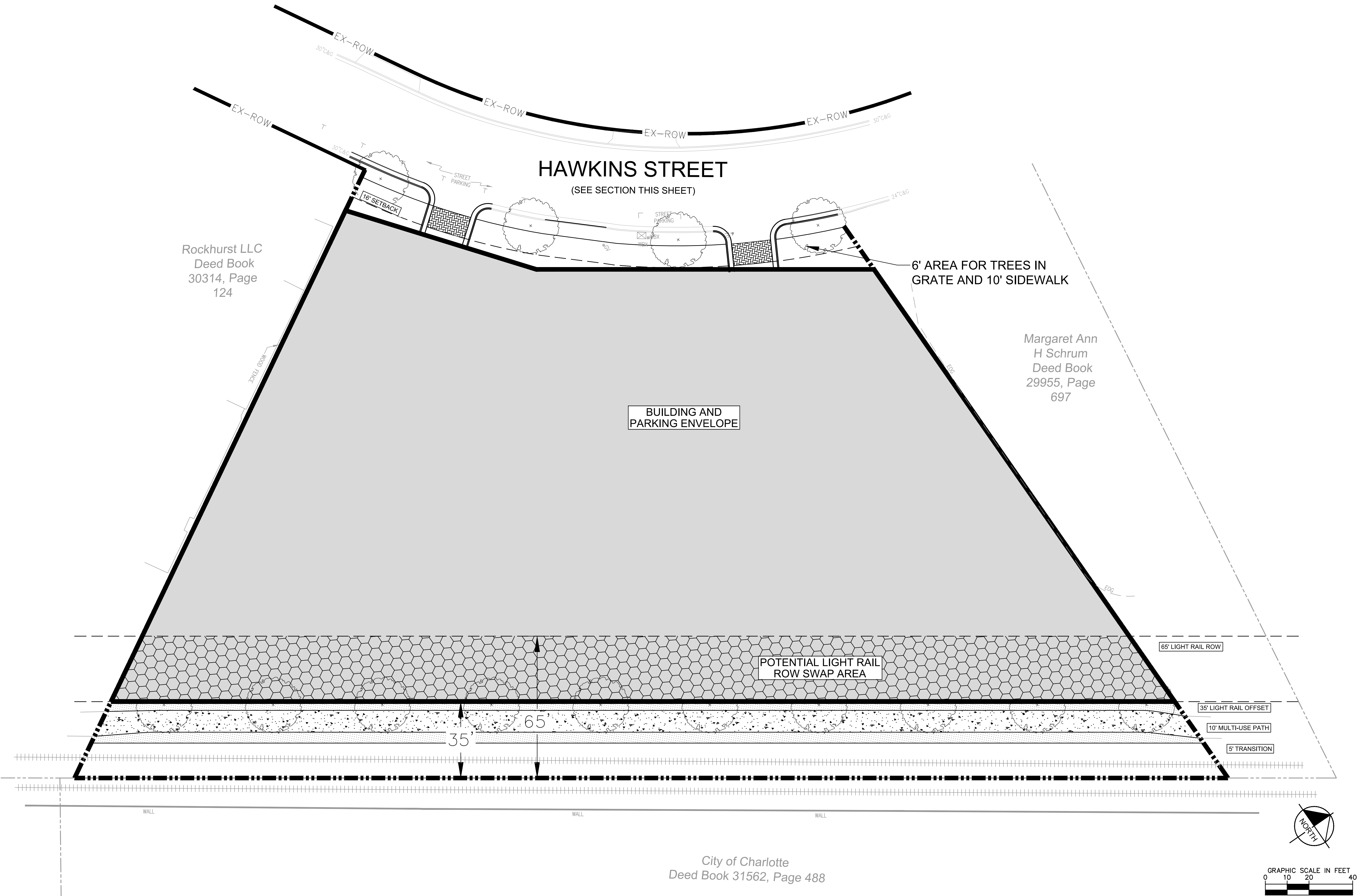
TECHNICAL DATA SHEET

PORTMAN SOUTHEAST
PREPARED FOR
PORTMAN HOLDINGS

CITY OF CHARLOTTE NORTH CAROLINA

SHEET NUMBER
R7 - 1

This document, together with the concepts and designs presented herein, as an instrument of service, is intended only for the specific purpose and client for which it was prepared. Reuse of and improper reliance on this document without written authorization and adaptation by Kimley-Horn and Associates, Inc. shall be without liability to Kimley-Horn and Associates, Inc.



City of Charlotte
Deed Book 31562, Page 488

PORTMAN SOUTHEND PREPARED FOR PORTMAN HOLDINGS	CITY OF CHARLOTTE NORTH CAROLINA	SHEET NUMBER RZ - 2	PRELIMINARY DOCUMENT			 © 2018 KIMLEY-HORN AND ASSOCIATES, INC. 200 SOUTH TRYON STREET SUITE 200, CHARLOTTE, NC 28202 PHONE: 704-333-5131 WWW.KIMLEY-HORN.COM NC LICENSE #F-0102	REVISIONS	No.	BY	DATE
			KHA PROJECT 01929011							
			DATE 11/7/2018							
			SCALE AS SHOWN DESIGNED BY JH							
			DRAWN BY KS CHECKED BY JH							

