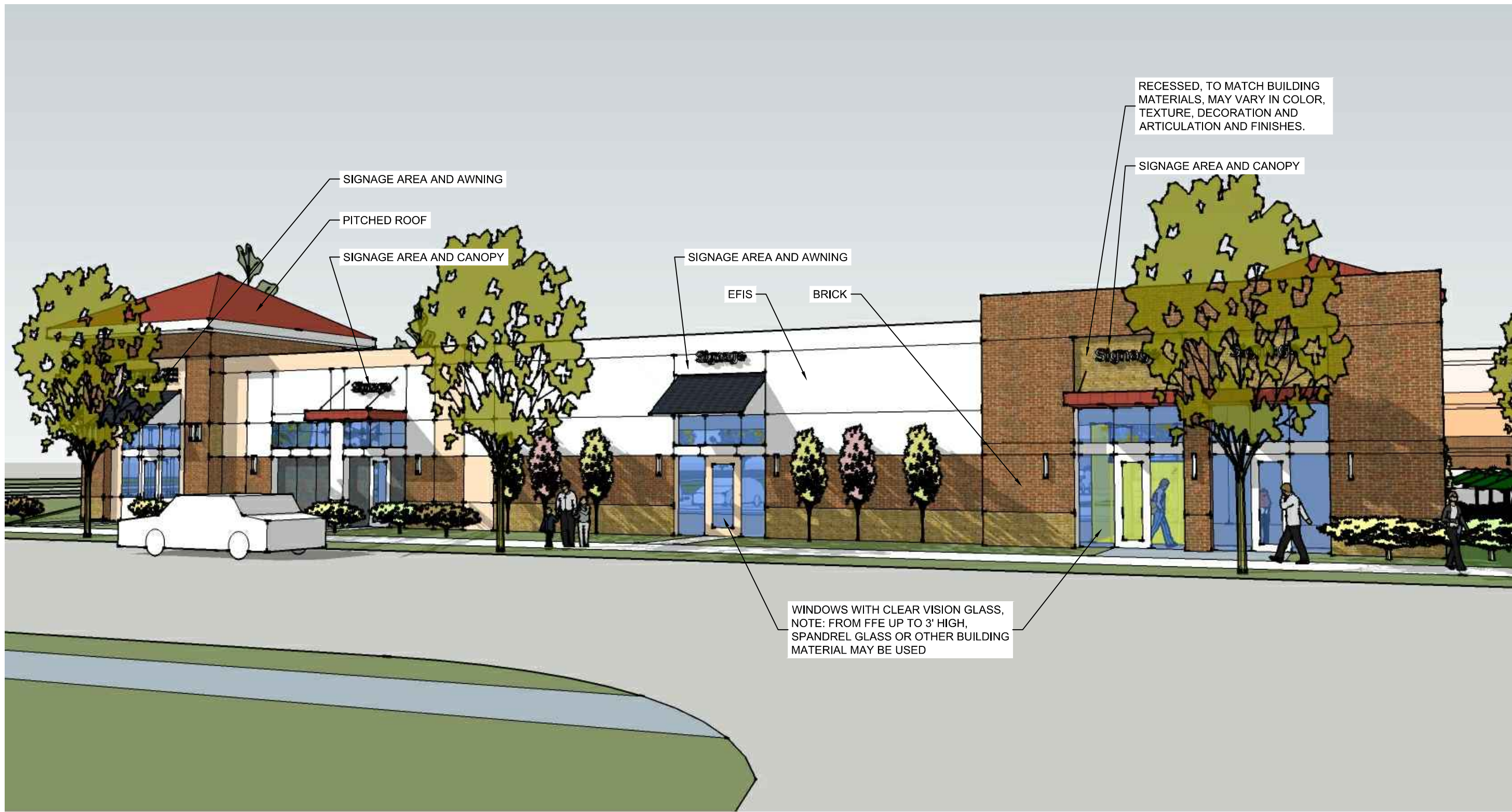








ILLUSTRATIVE RENDERING 1 - OVERALL COMMUNITY VIEW



ILLUSTRATIVE RENDERING 2 - BUILDING "B", ROCKY RIVER ROAD FRONTAGE



ILLUSTRATIVE RENDERING 3 - BUILDING "A", ROCKY RIVER ROAD FRONTAGE

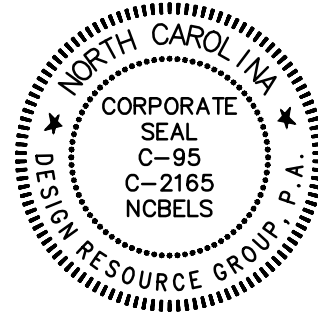


ILLUSTRATIVE RENDERING 4 - BUILDING "C", SHARED PARKING FRONTAGE VIEW





ILLUSTRATIVE RENDERING 5 - BUILDING "C", W T HARRIS BLVD FRONTAGE VIEW



REZONING PETITION  
FOR PUBLIC HEARING:  
2016-140

REZONING PLANS

**HARRIS STATION**  
CHARLOTTE, NC

**HAWTHORNE HOLDING GROUP**  
PO BOX 958  
DAVIDSON, NC 28036

**BUILDING  
ELEVATIONS**



PROJECT #: 647-001  
DRAWN BY: SK  
CHECKED BY: TH

NOVEMBER 21, 2016

REVISIONS:  
11.21.16 1ST SUBMITTAL COMMENTS  
01.09.17 STAFF COMMENTS