

CRESSWIND REZONING PETITION NO. 2015-101

ALBEMARLE ROAD
CHARLOTTE, NORTH CAROLINA

SHEET INDEX:

RZ-1.0	COVER SHEET
RZ-2.0	TECHNICAL DATA SHEET
RZ-3.0	SCHEMATIC SITE PLAN
RZ-4.0	DEVELOPMENT STANDARDS
RZ-5.0	OPEN SPACE PLAN

LAND OWNERS

485 Investments LLC
6700 Fairview Road
Charlotte, NC 28210

Lee Security Partnership
6209 Windy Knoll Lane
Charlotte, NC 28227

Henry Oliver Rhodes, Sr.
Mary L. Rhodes c/o John Rhodes
13849 Beatties Ford Road
Huntersville, NC 28078

Jerry N. Helms Family Trust
11901 Albemarle Road
Charlotte, NC 28227

PETITIONER

Kolter Acquisitions, LLC
701 S. Olive Avenue, Suite 104
West Palm Beach, FL 33401
Contact: John Morgan
Phone #: 843.696.6907

LANDSCAPE ARCHITECT/
CIVIL ENGINEER

LandDesign, Inc.
223 North Graham St.
Charlotte, NC 28202
Contact: Mark Kime
Phone #: 704.333.0325

SURVEYOR

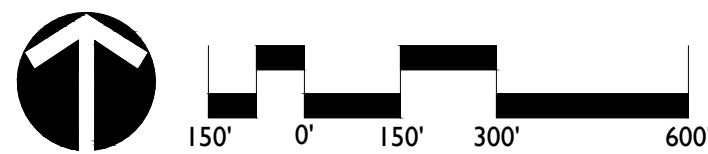
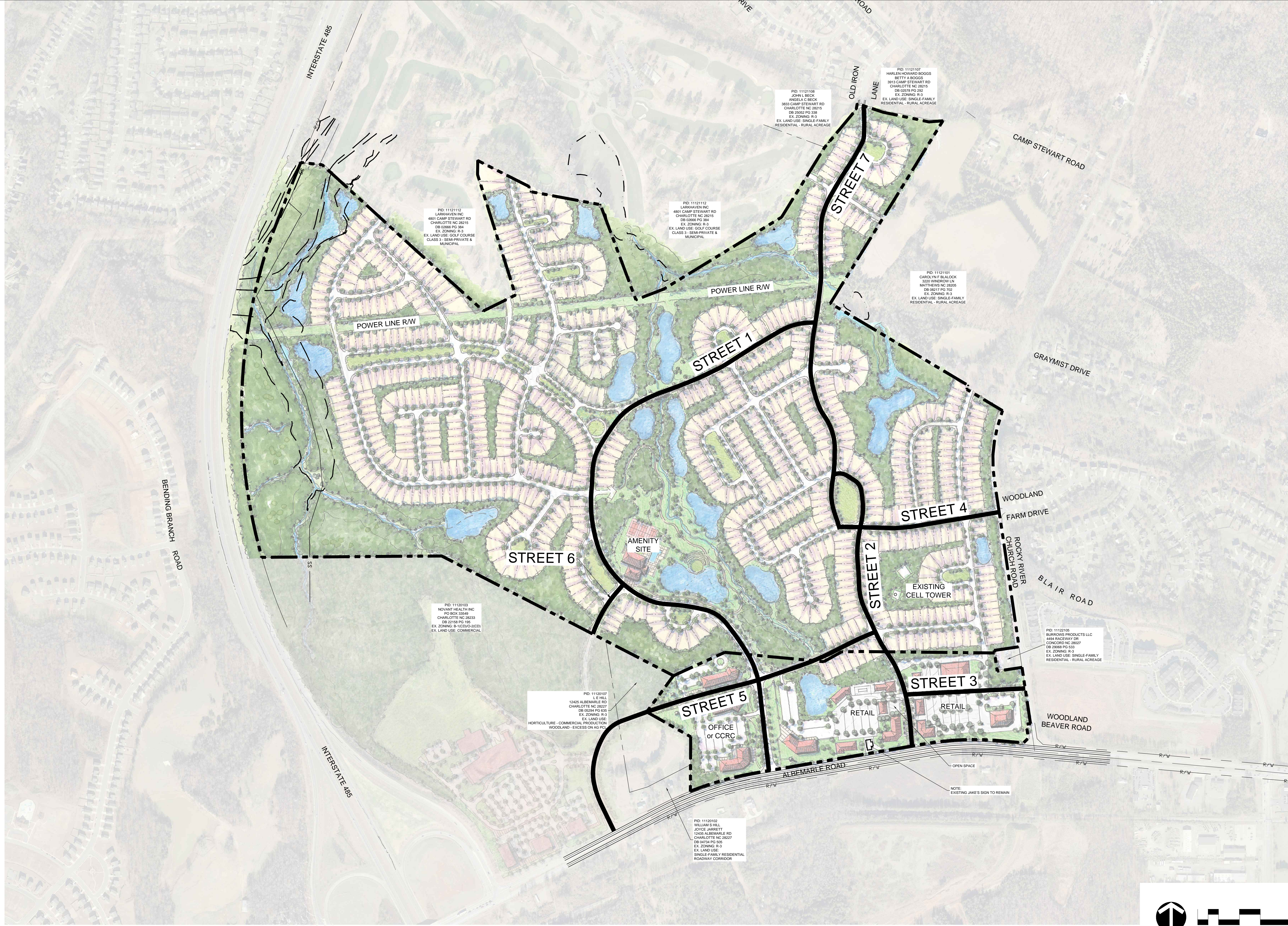
LDSI, INC
508 W. 5th Street, Suite 125
Charlotte, NC 28202
Contact: David Boyles
Phone #: 704.337.8329



CRESSWIND
REZONING PETITION NO. 2015-101
KOLTER ACQUISITIONS, LLC; MECKLENBURG COUNTY, NORTH CAROLINA
COVER SHEET

REVISIONS:
09/21/15 REVISE PER STAFF COMMENTS

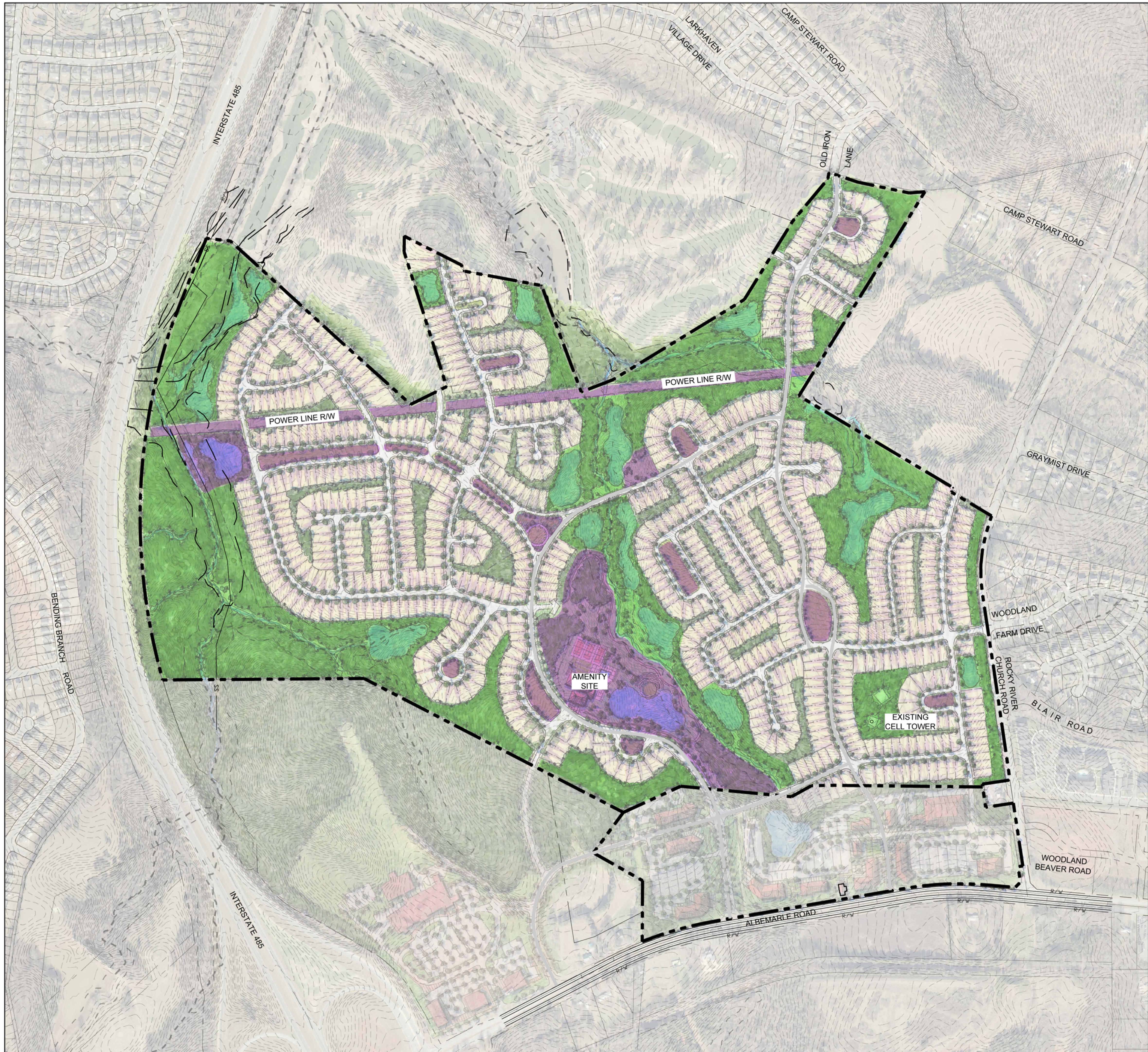
DATE: JUNE 18, 2015
DESIGNED BY: KST
DRAWN BY: MEK
CHECKED BY: KST
SCALE: AS SHOWN
PROJECT #: 1014398
SHEET #:
RZ-1.0



REVISIONS:
09/21/15 REVISE PER STAFF COMMENTS

CRESSWIND
REZONING PETITION NO. 2015-101
KOLTER ACQUISITIONS, LLC; MECKLENBURG COUNTY, NORTH CAROLINA
SCHEMATIC SITE PLAN





PASSIVE OPEN SPACE

- ENVIRON. AREAS/TREESAVE
- BUFFERS
- SLOPES
- GENERAL OPEN SPACE
- PONDS

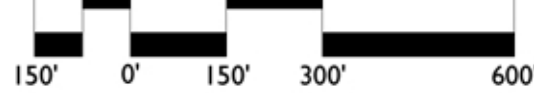
MINIMUM: 15%



ACTIVE OPEN SPACE

- AMENITY AREAS
- POCKET PARKS
- TRAILS
- FIELDS
- HARDSCAPE
- AMENITIZED PONDS

MINIMUM: 8%



DATE: JUNE 18, 2015
DESIGNED BY: KST
DRAWN BY: MEK
CHECKED BY: KST
SCALE: 1"=300'
PROJECT #: 1014398
SHEET #:

CRESSWIND
REZONING PETITION NO. 2015-101
KOLTER ACQUISITIONS, LLC; MECKLENBURG COUNTY, NORTH CAROLINA
RESIDENTIAL COMMUNITY OPEN SPACE (ZONED MX-1)

REVISIONS:
09-21-15 REVISE PER STAFF COMMENTS

LandDesign
223 N Graham Street Charlotte, NC 28202
V: 704.333.0325 F: 704.332.3246
www.LandDesign.com



RZ-5.0