

SITE DATA (QUIKTRIP STORE 1051)	
TAX PARCEL ID #:	097-031-52 097-031-05 097-031-06 097-031-07
TOTAL SITE/REZONING AREA:	±4.395 AC
EXISTING ZONING:	R-4 AND B-1(CD)
PROPOSED ZONING:	B-1(CD) AND B-1 (CD) S.P.A.
PROPOSED USE:	SEE NOTES
DEVELOPMENT STANDARDS:	
SETBACK (ALONG THE PLAZA):	20' FROM ROW
SETBACK (ALONG E. WT HARRIS BLVD):	20' FROM ROW
SIDE:	0'
REAR:	10'
BUILDING AREA:	8,000 SF MAXIMUM
BUILDING HEIGHT:	25' MAXIMUM



QuikTrip No. 1051

WT HARRIS & THE PLAZA
CHARLOTTE, NC



PROTOTYPE:	P-82 (02/01/15)
DIVISION:	CAROLINAS
VERSION:	001
DESIGNED BY:	UDP
DRAWN BY:	UDP
REVIEWED BY:	TK

REV	DATE	DESCRIPTION
1	08-21-15	PER STATE COMMENTS

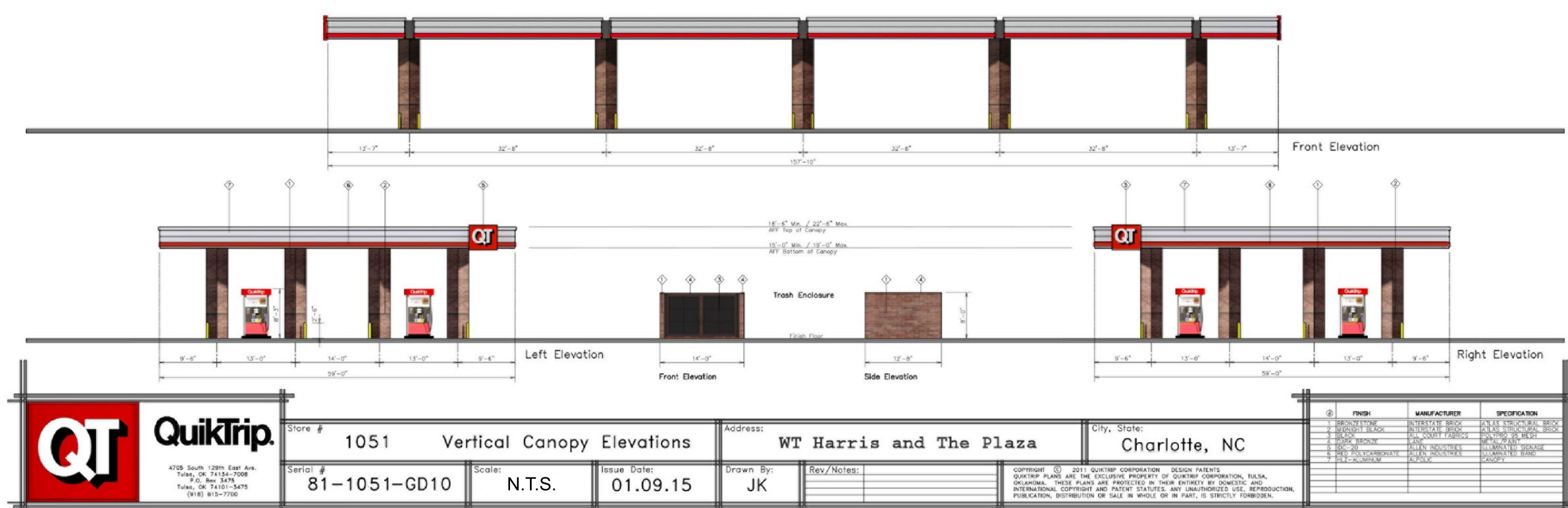
ORIGINAL ISSUE DATE: 04-27-15

SHEET TITLE:

REZONING SITE PLAN

SHEET NUMBER:

RZ-1



REZONING PETITION # 2015-92

PROJECT NO.: 15-017



URBAN
DESIGN
PARTNERS
1315-46 Central Ave. • 704.334.3303
Charlotte, NC 28205 • 704.334.3305
urbanpartners.com
License No. P-2415

QuikTrip No. 1051
WT HARRIS & THE PLAZA
CHARLOTTE, NC



© COPYRIGHT QUIKTRIP CORPORATION 2011
ANY UNAUTHORIZED USE, REPRODUCTION,
PUBLICATION, DISTRIBUTION, OR SALE IN
WHOLE OR IN PART, IS STRICTLY FORBIDDEN.

PROTOTYPE: P-82 (02/01/15)
DIVISION: CAROLINAS
VERSION: 001
DESIGNED BY: UDP
DRAWN BY: UDP
REVIEWED BY: TK

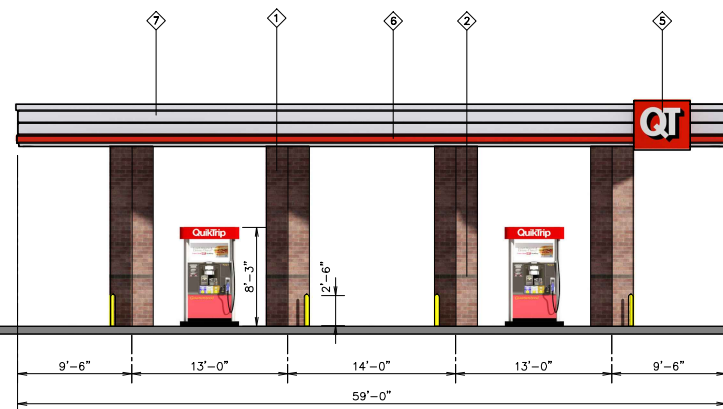
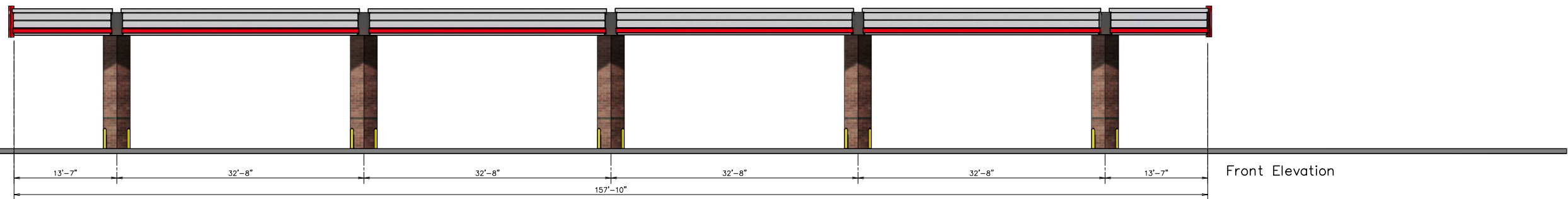
REV	DATE	DESCRIPTION
1	08-21-15	PER STAFF COMMENTS

ORIGINAL ISSUE DATE: 04-27-15

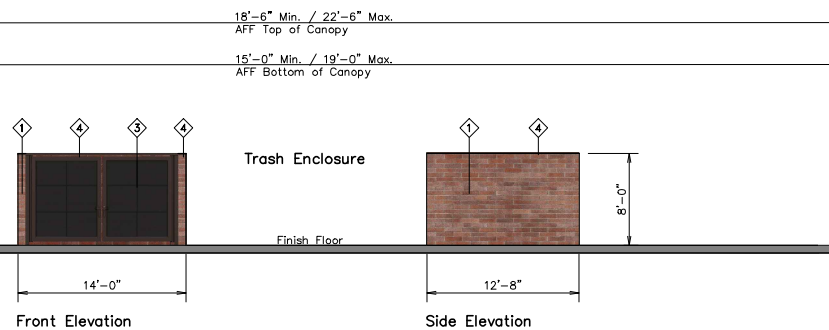
SHEET TITLE:
BUILDING ELEVATIONS AND
ILLUSTRATIVES

SHEET NUMBER:

RZ-3

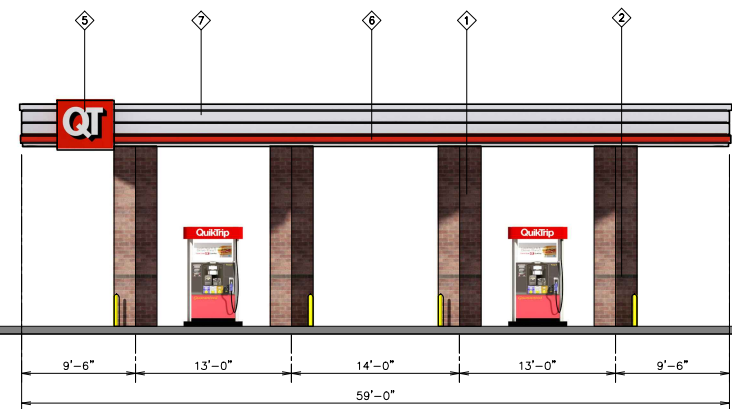


Left Elevation



Front Elevation

Side Elevation



Right Elevation



QuikTrip.

4705 South 129th East Ave.
Tulsa, OK 74134-7008
P.O. Box 3475
Tulsa, OK 74101-3475
(918) 615-7700

Store # 1051 Vertical Canopy Elevations

Serial # 81-1051-GD10 Scale: 1/16"=1'-0" Issue Date: 01.09.15

Address: WT Harris and The Plaza

Drawn By: JK

Rev/Notes:

City, State: Charlotte, NC

COPYRIGHT © 2011 QUIKTRIP CORPORATION. DESIGN PATENTS QUIKTRIP PLANS ARE THE EXCLUSIVE PROPERTY OF QUIKTRIP CORPORATION, TULSA, OKLAHOMA. THESE PLANS ARE PROTECTED IN THEIR ENTIRETY BY DOMESTIC AND INTERNATIONAL COPYRIGHT AND PATENT STATUTES. ANY UNAUTHORIZED USE, REPRODUCTION, PUBLICATION, DISTRIBUTION OR SALE IN WHOLE OR IN PART, IS STRICTLY FORBIDDEN.

①	FINISH	MANUFACTURER	SPECIFICATION
1	BRONZESTONE	INTERSTATE BRICK	ATLAS STRUCTURAL BRICK
2	MIDNIGHT BLACK	INTERSTATE BRICK	ATLAS STRUCTURAL BRICK
3	BLACK	ALL COURT FABRICS	POLYPRO 95 MESH
4	DARK BRONZE	LANE	METAL/PAINT
5	DD-20	ALLEN INDUSTRIES	ILLUMINATED SIGNAGE
6	RED POLYCARBONATE	ALLEN INDUSTRIES	ILLUMINATED BAND
7	HLZ-ALUMINUM	ALPOLIC	CANOPY