

TIME WARNER
CABLE ARENA

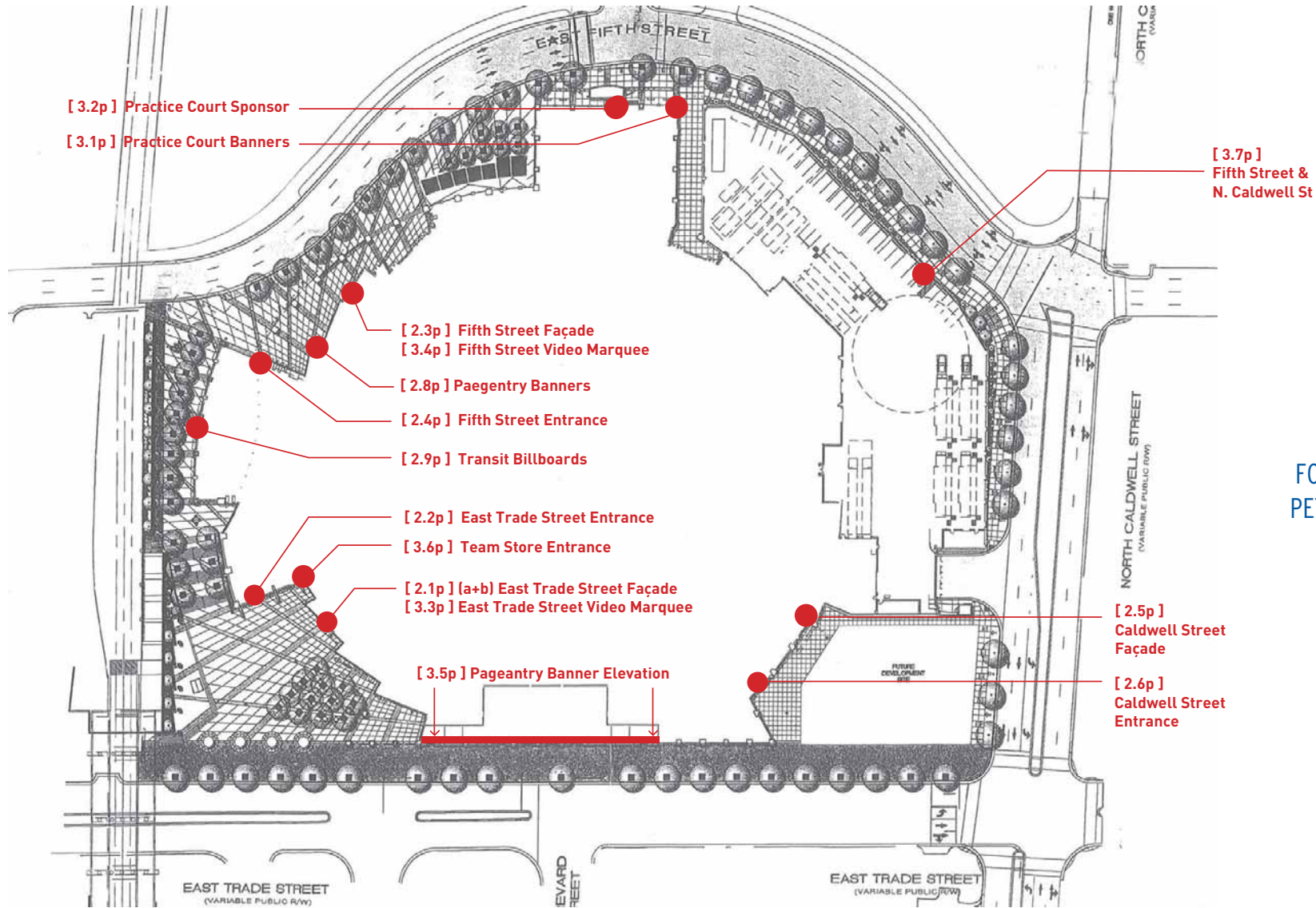


exterior signage program

for public review



rev.8 (15 august 2008)



FOR PUBLIC REVIEW
PETITION # 2008-129



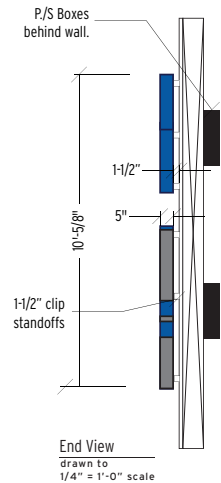
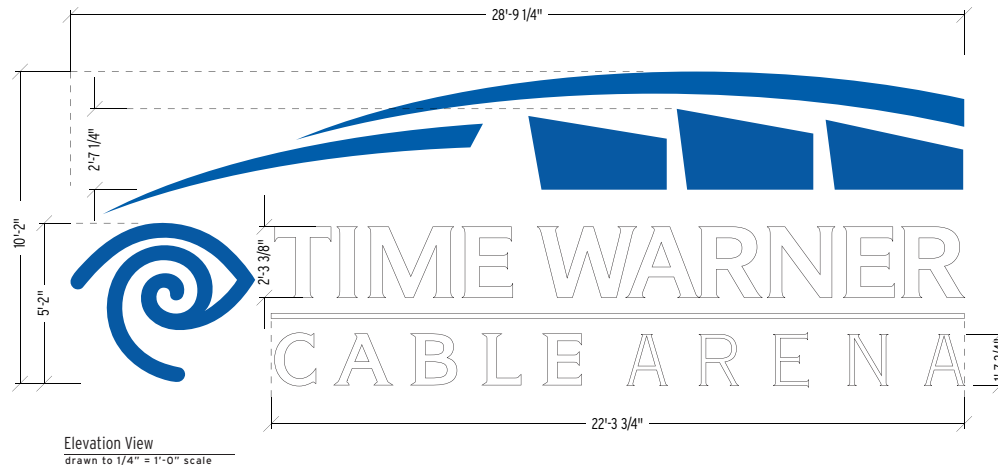
Remove (1) one existing set of illuminated channel letters reading "CHARLOTTE BOBCATS ARENA" along with existing metal raceways.

Manufacture and Install (1) one new set of haloilluminated channel letters reading "TIME WARNER CABLE ARENA" with underscore, arena roof shaping and eye logo.

This display will consume approximately 300 square feet.
This display will require (1) one 120V circuit, 20a min.

Previously approved sign
Approved for 300 sq ft
No change requested

The graphic representations set forth are illustrative and alternative graphic designs are allowed within the size limits set forth.



proposed signage in context.



existing signage shown (alternate view)



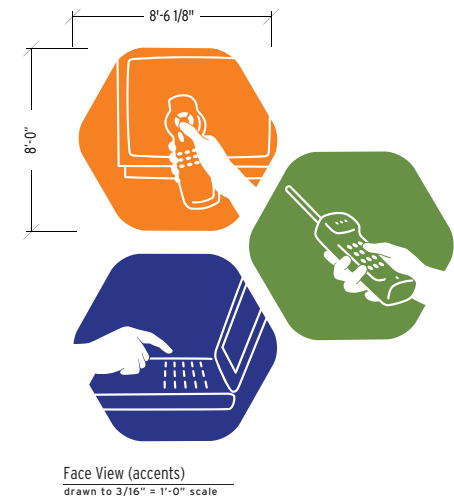
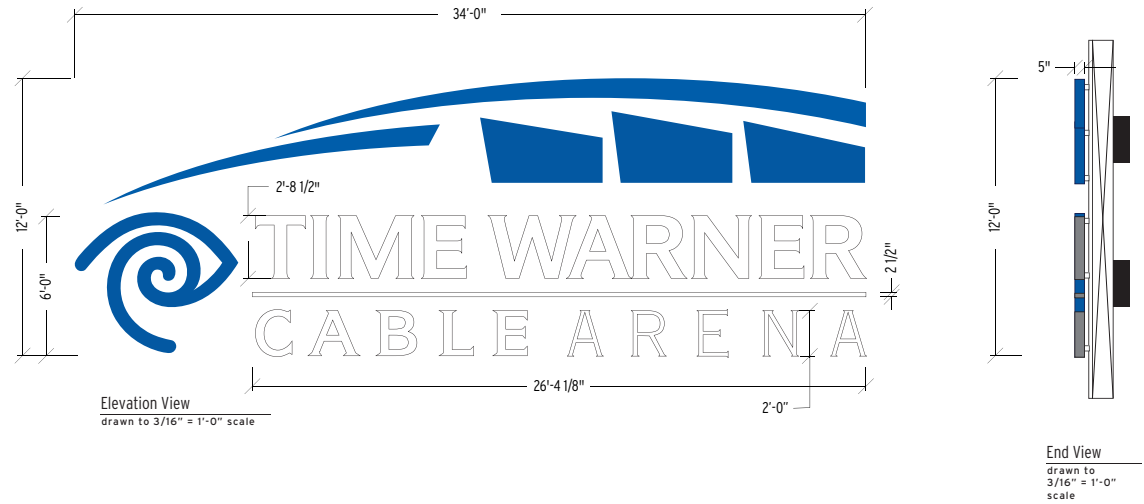
Manufacture and Install (1) one new set of halo illuminated channel letters reading "TIME WARNER CABLE ARENA" with underscore, arena roof shaping and eye logo with 3 non-illuminated hexagonal accent pieces installed below.

This display will consume approximately 408 square feet (hexagonal logo elements an additional 204 square feet)
This display will require (1) one 120V circuit, 20a.

New Sign
Requesting 612 sq ft.

This sign may be erected once the sign on sheet 2.1p (a)
East Trade Street Façade is removed

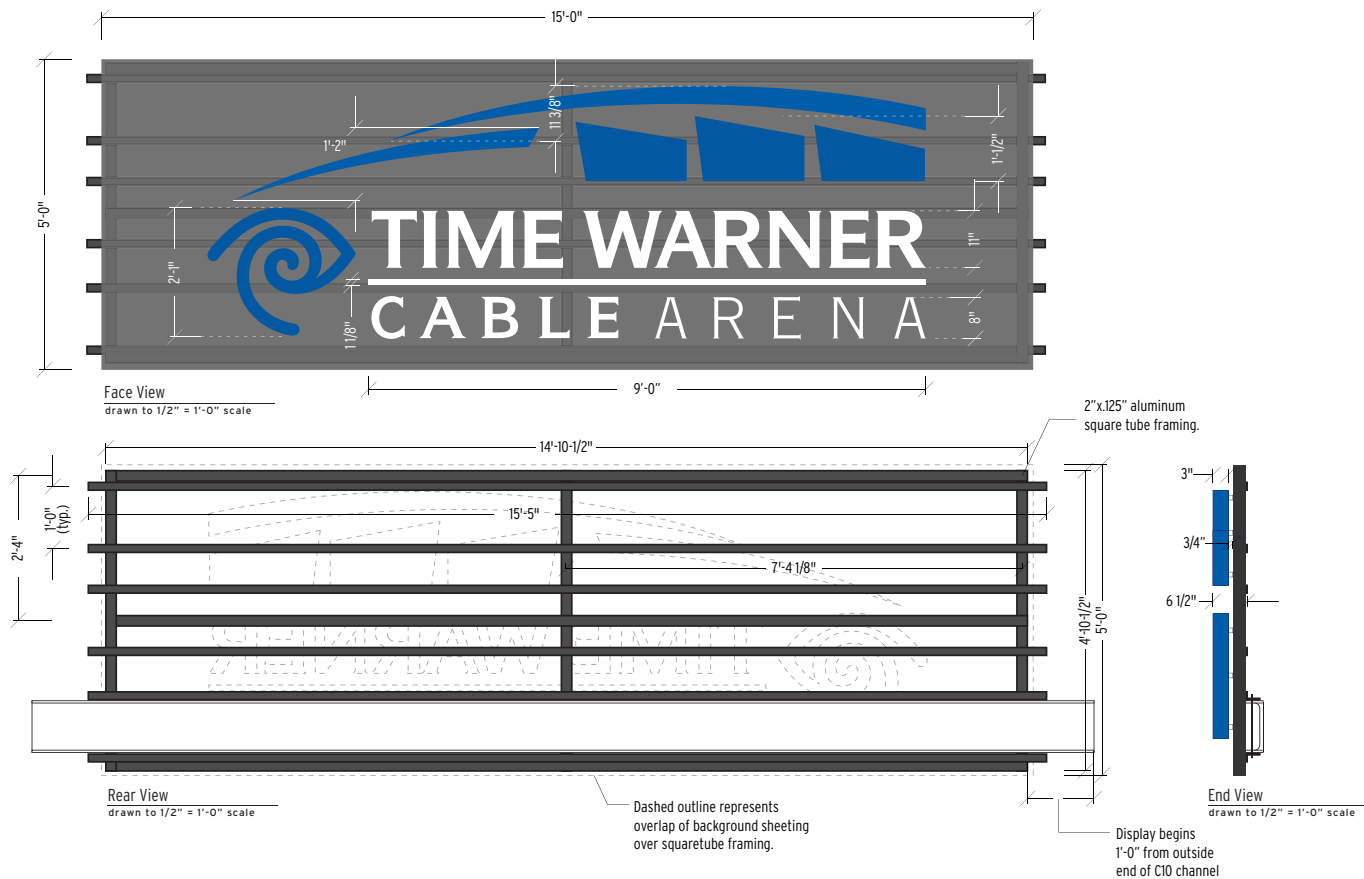
The graphic representations set forth are illustrative
and alternative graphic designs are allowed within
the size limits set forth.



Manufacture and Install (1) one new set of non-illuminated channel letters reading "TIME WARNER CABLE ARENA" with underscore, arena roof shaping and eye logo on new perforated aluminum bleed face, wrapped around all sides, 2" aluminum squaretube frame.

The graphic representations set forth are illustrative and alternative graphic designs are allowed within the size limits set forth.

Previously Approved Sign
Approved @ 21 sq ft
Requesting 75 sq ft.

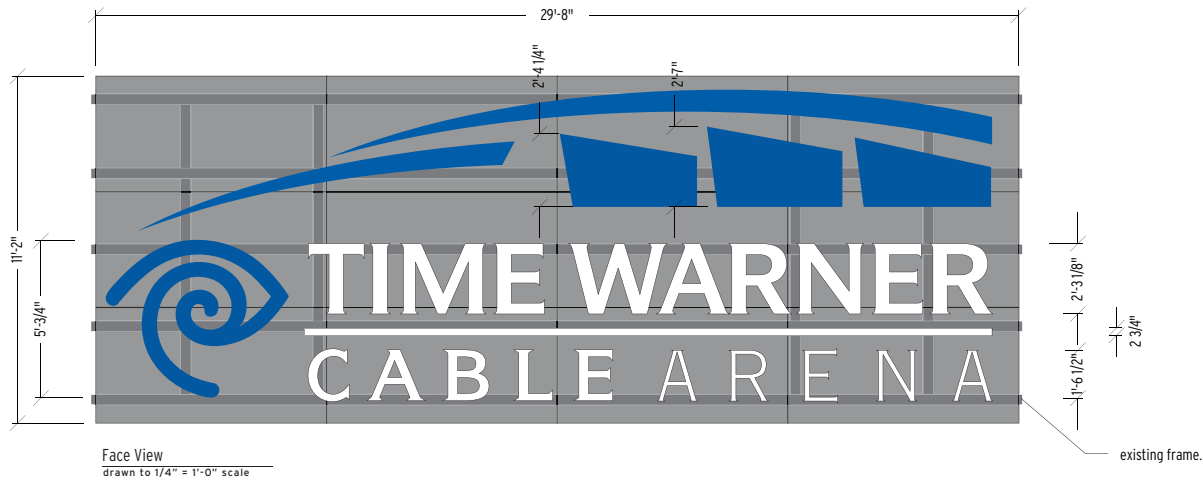


Manufacture and Install (1) one new set of face illuminated channel letters reading "TIME WARNER CABLE ARENA" with underscore, arena roof shaping and eye logo on new perforated aluminum background paneling mounted to existing framing on building façade.

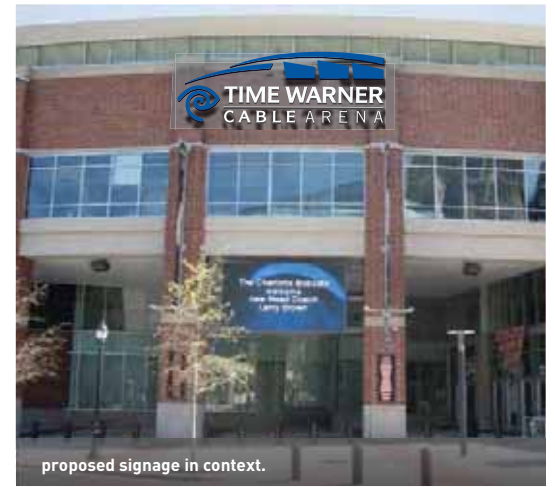
This display will consume approximately 331 square feet.
This display will require (1) one 120V circuit, 20a min.

Previously approved sign
Approved for 335 sq ft
No Change Requested

The graphic representations set forth are illustrative
and alternative graphic designs are allowed within
the size limits set forth.



existing signage shown (alternate view)



proposed signage in context.

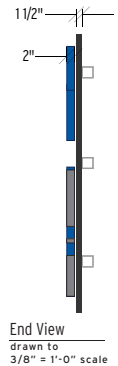
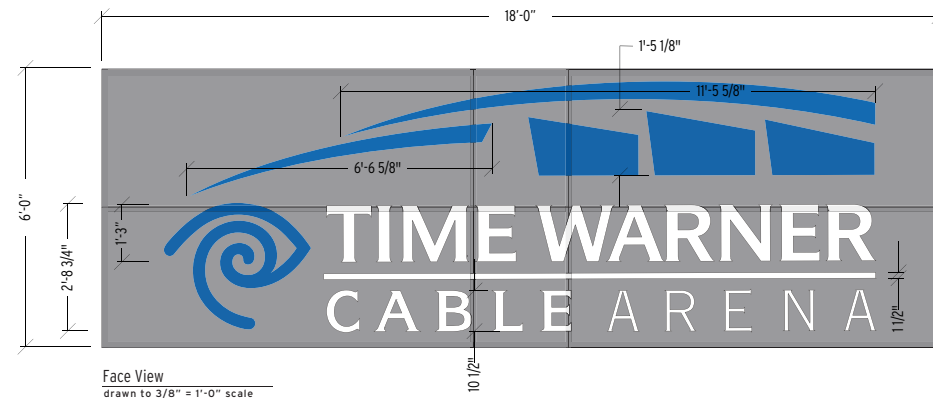


Manufacture and Install (1) one new set of non illuminated reverse pan channel letters reading "TIME WARNER CABLE ARENA" with underscore, arena roof shaping and eye logo on new perforated aluminum background paneling mounted to existing framing in front of entrance.

This display will consume approximately 108 square feet.

Previously Approved Sign
Approved @ 21 sq ft
Requesting 108 sq ft.

The graphic representations set forth are illustrative
and alternative graphic designs are allowed within
the size limits set forth.



Manufacture and Install (1) one new set of halo illuminated channel letters reading "TIME WARNER CABLE ARENA" with underscore, arena roof shaping and eye logo with 3 non-illuminated hexagonal accent pieces installed below.

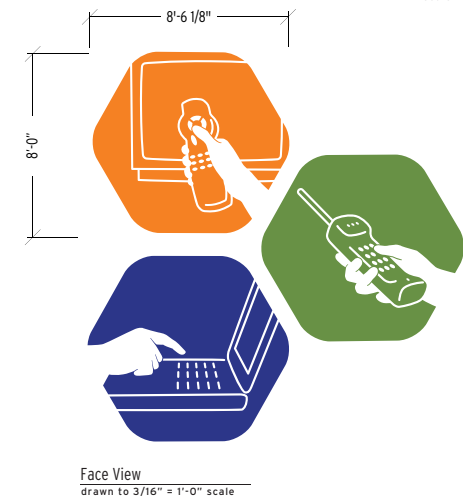
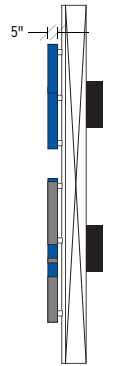
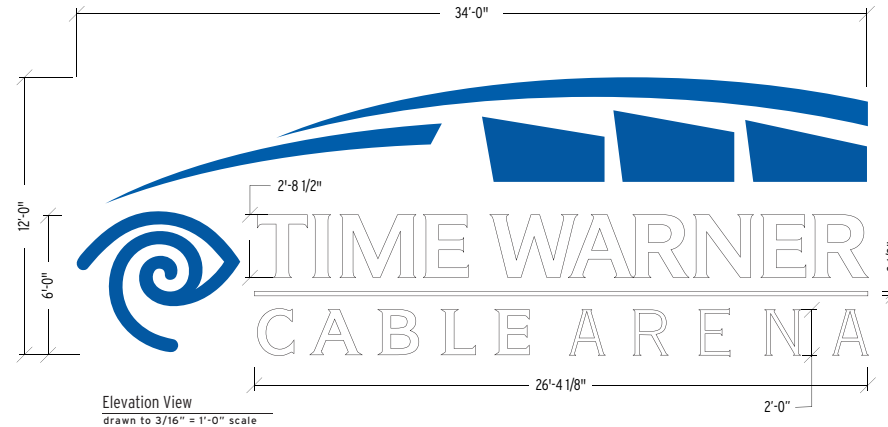
New Sign
Requesting 612 Sq ft.

This display will consume approximately 408 square feet (hexagonal logo elements an additional 204 square feet)

This display will require (1) one 120V circuit, 20a.

The graphic representations set forth are illustrative and alternative graphic designs are allowed within the size limits set forth.

The sign may be erected on one (1) of the three (3) silver wall panels that face the intersection of East Trade Street and N. Caldwell Street.





The graphic representations set forth are illustrative and alternative graphic designs are allowed within the size limits set forth.



Manufacture and Install (1) one set of digitally printed window graphics on translucent vinyl film for second surface application on inside of glass.

New Sign
Requesting 212.5 Sq ft.

This display will consume approximately 212.5 square feet

Current Becks Import window graphic will be replaced with Time Warner Cable Arena graphic.

The graphic representations set forth are illustrative and alternative graphic designs are allowed within the size limits set forth.



Face View
drawn to 3/8" 1'-0" scale



proposed signage in context.



existing signage shown



Graphic to be painted on roof using reflective paint.

This display will consume approximately 36,250 square feet

New Sign
Requesting 36,250 sq ft

signage illumination will be provided by down light fixtures with the ability to wash the graphic and provide nighttime viewing of the sign from above.

The graphic representations set forth are illustrative and alternative graphic designs are allowed within the size limits set forth.

Other signage options, including digital signage, and LED color changing lights are allowed.

Perspective View
NTS



Plan View
approximate scale

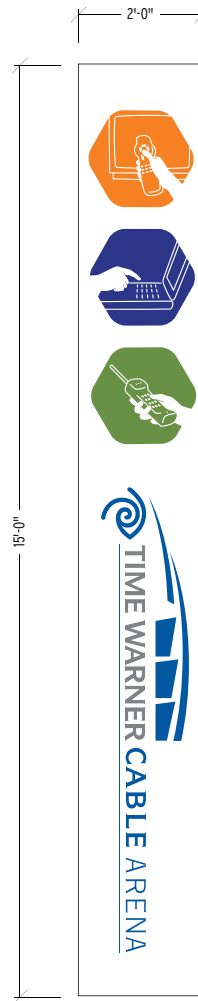


Manufacture and Install (2) two new digitally printed mesh banners.

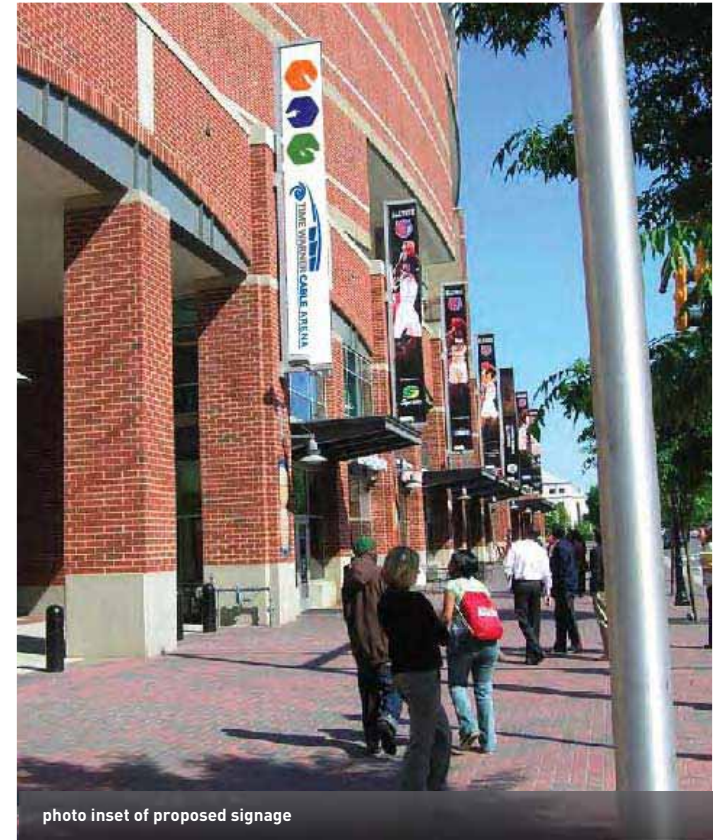
Previously approved sign approved 8 banners with 50 sq ft of Pageantry and 22 sq ft. with logo for a total of 72 sq ft.

Proposed new banner will use all 72 sq ft for logo.

The graphic representations set forth are illustrative and alternative graphic designs are allowed within the size limits set forth.



Layout View
drawn to 1/2" = 1'-0" scale



Manufacture and Install (1) one new digitally printed mesh graphic with custom artwork. (169 square feet)

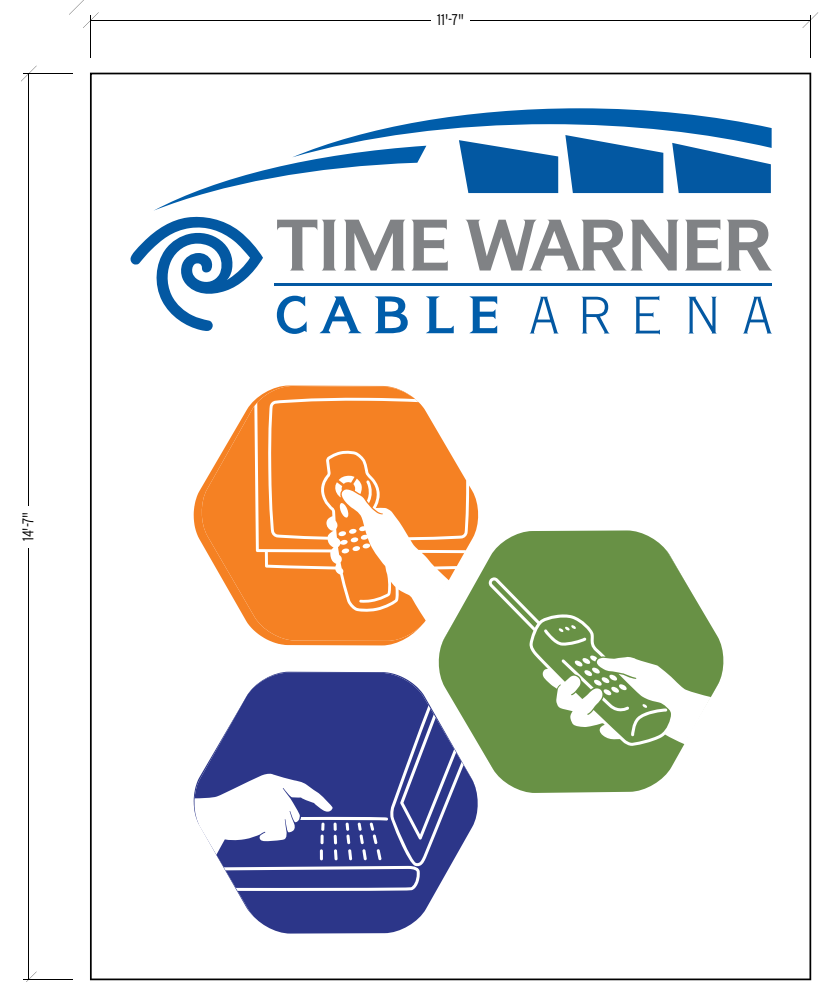
Graphics to match TWCA logo/logotype.

Previously Approved sign
Approved eight (8) with 169 sq ft and (1) one with 98 sq ft.
No changes proposed.

The graphic representations set forth are illustrative
and alternative graphic designs are allowed within
the size limits set forth.

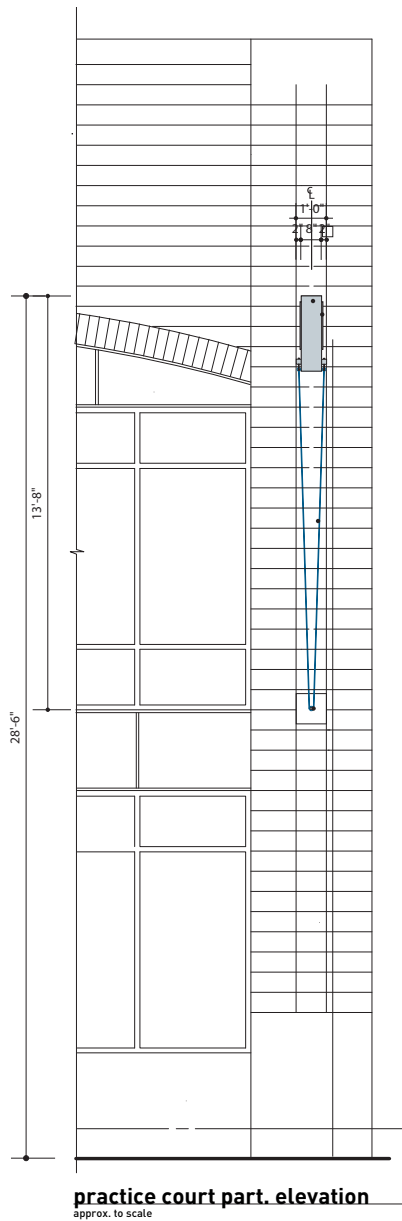


photo inset of proposed signage

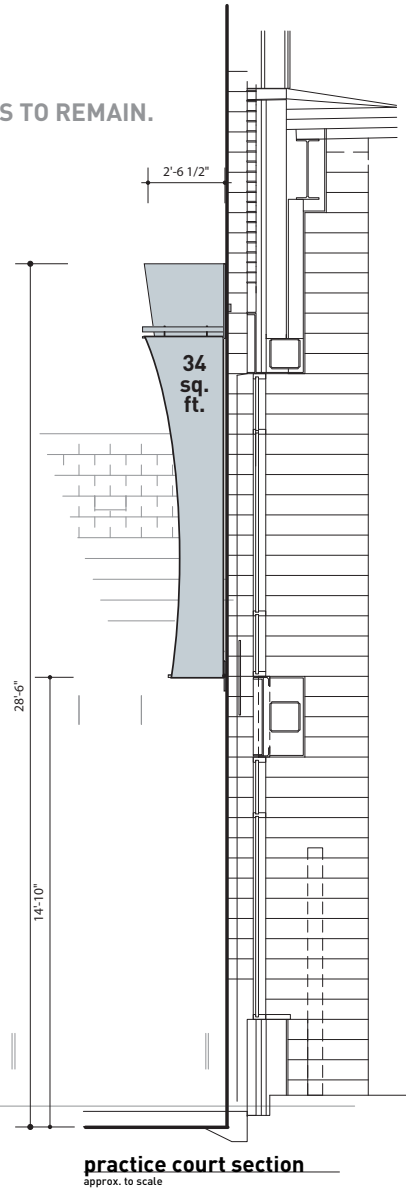


Transit Banner Layout
drawn to 1/2" = 1'-0" scale





BANNERS TO REMAIN.



Specifications

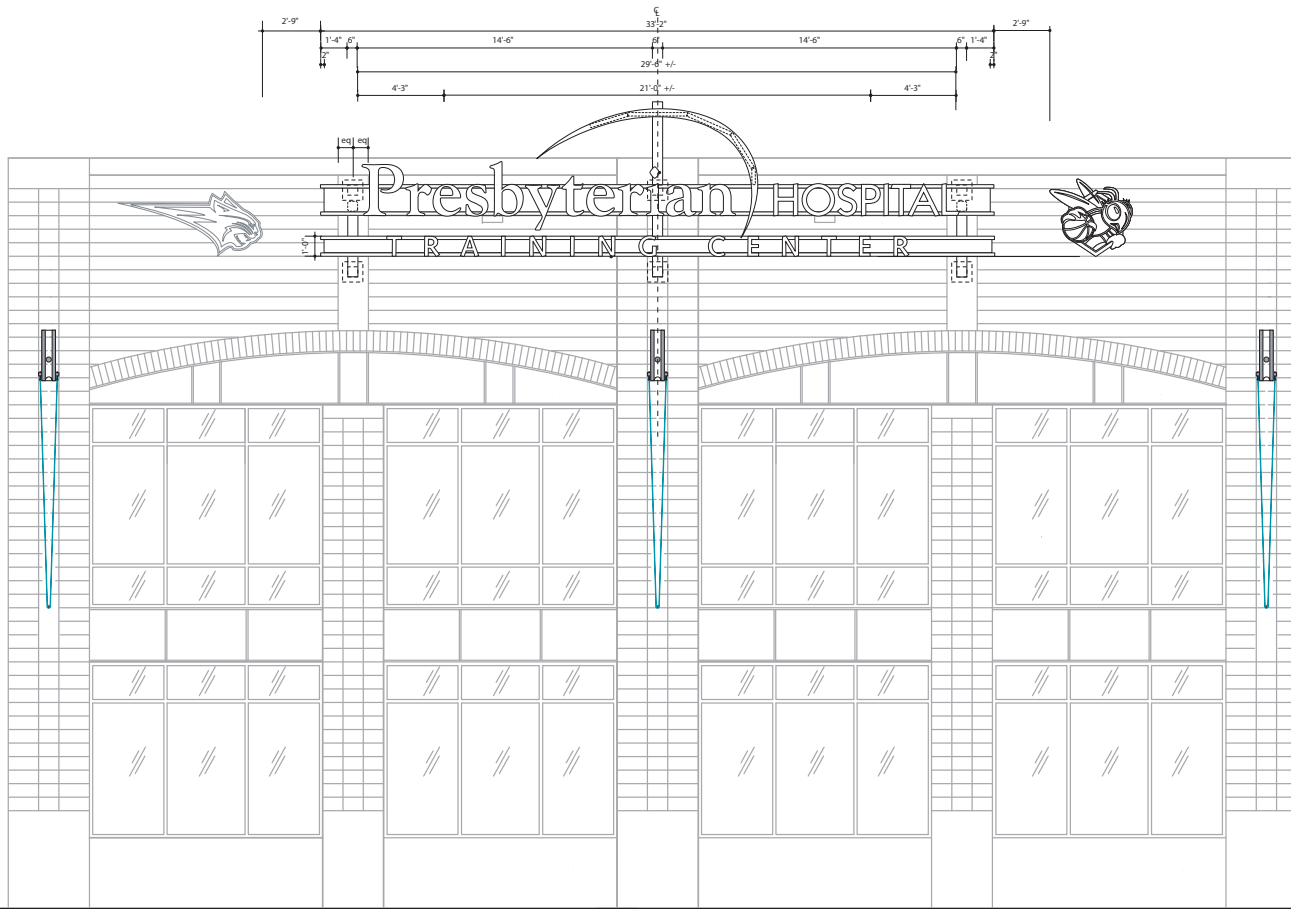
Existing Signage :

(5) five pageantry banners on practice court elevation.

- **Previously Approved**
- **Approved for 34 square feet**
- **No Change requested**

The graphic representations set forth are illustrative and alternative graphic designs are allowed within the size limits set forth.

DISPLAYS TO REMAIN.



Existing Signage :

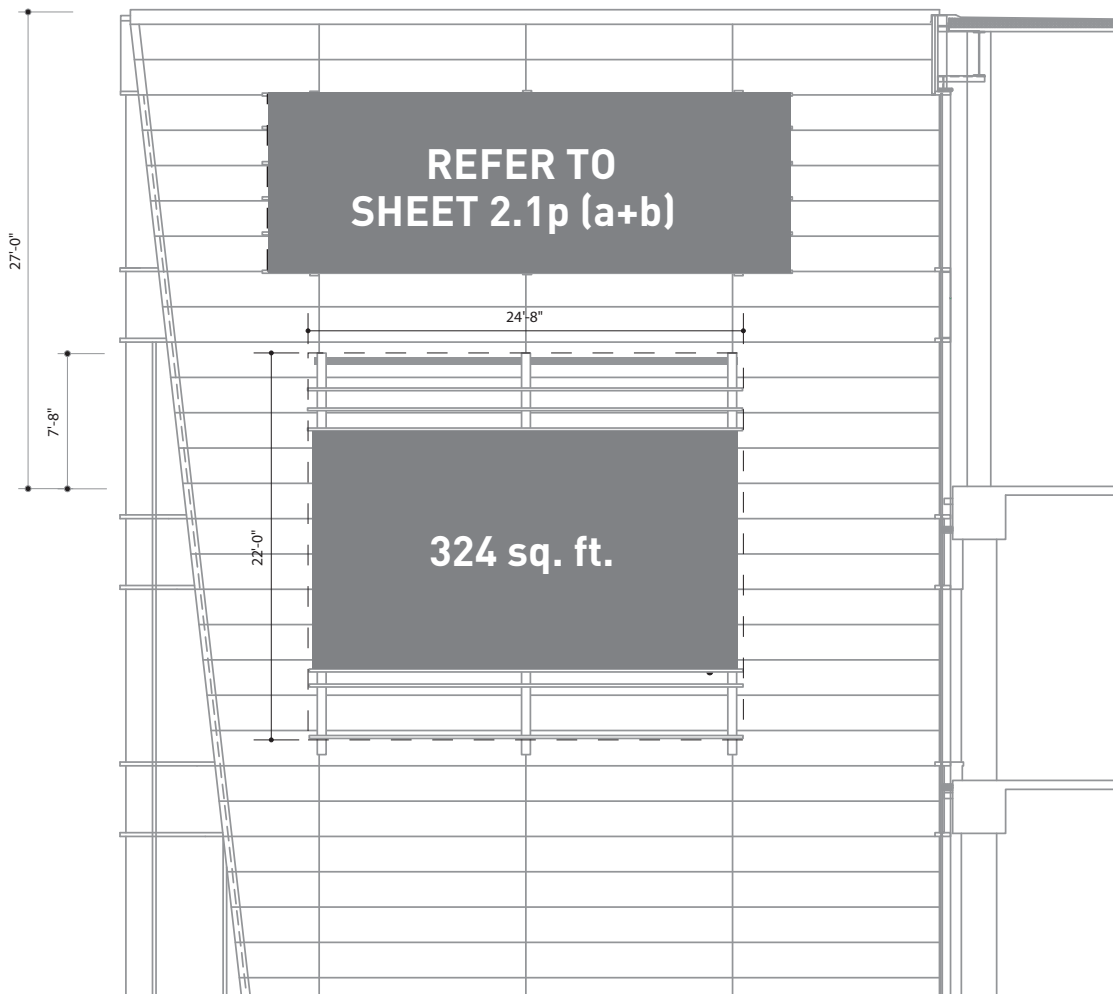
(1) primary ID sign, channel letters with backlit lexan faces mounted on metal framing, secondary logos are flat metal outlines with digitally printed applied graphics.

- **Previously Approved Signage**
- **Approved for one sign at 162 square and one at 22 square feet and one at 14.5 square feet**
- **No Changes requested**

The graphic representations set forth are illustrative and alternative graphic designs are allowed within the size limits set forth.

practice court elevation
approx. to scale





E. Trade St. Elevation
approx. to scale

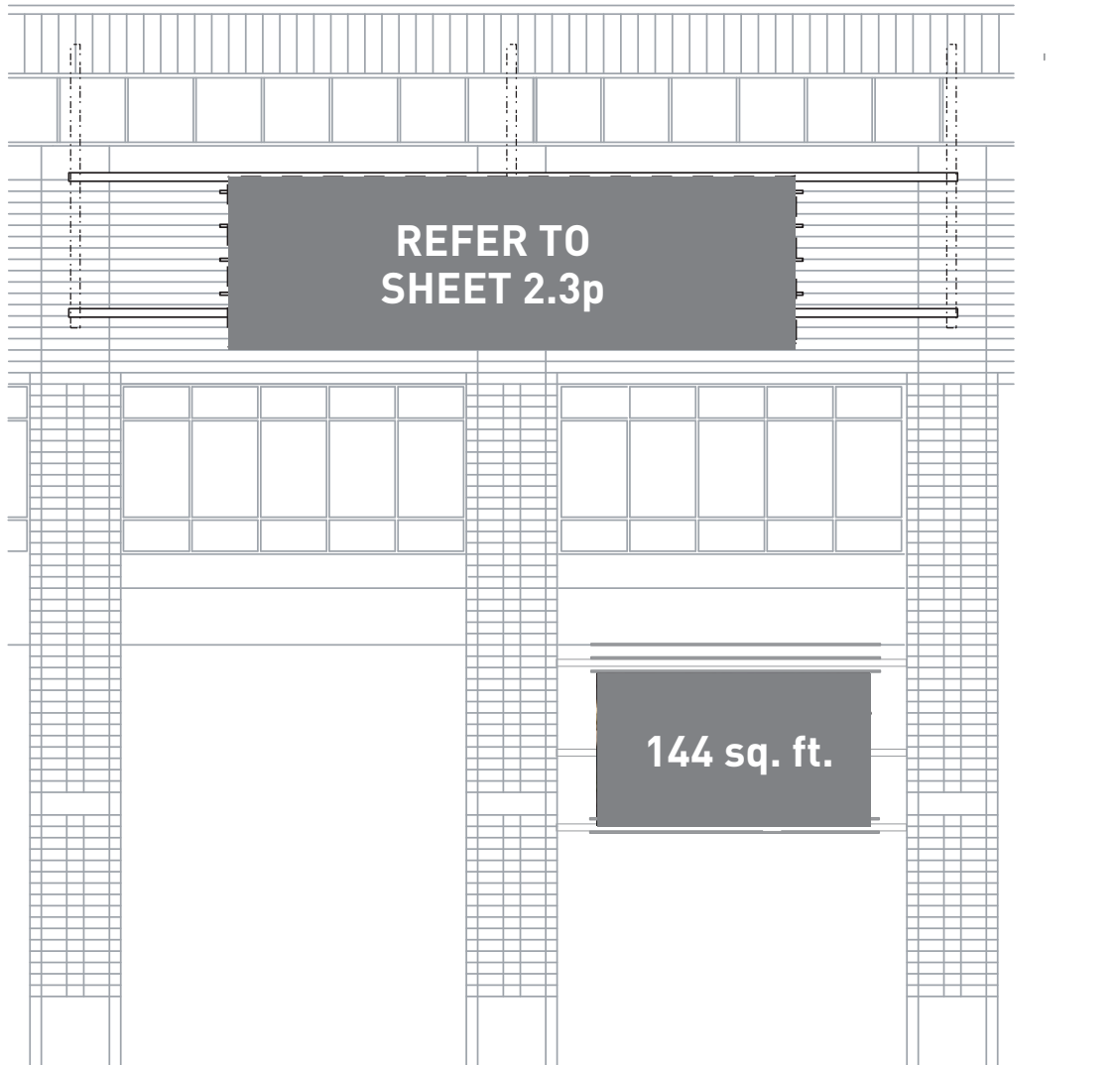
Existing Signage :

(1) one RGB LED Video
Marquee mounted to wall.

- **Previously Approved Signage**
- **Approved Video Board Sign
with 324 square feet plus
218 square feet of additional
signage.**
- **Total of 542 square feet**
- **No change requested**

The graphic representations set forth are illustrative
and alternative graphic designs are allowed within
the size limits set forth.





5th St. Elevation
approx. to scale

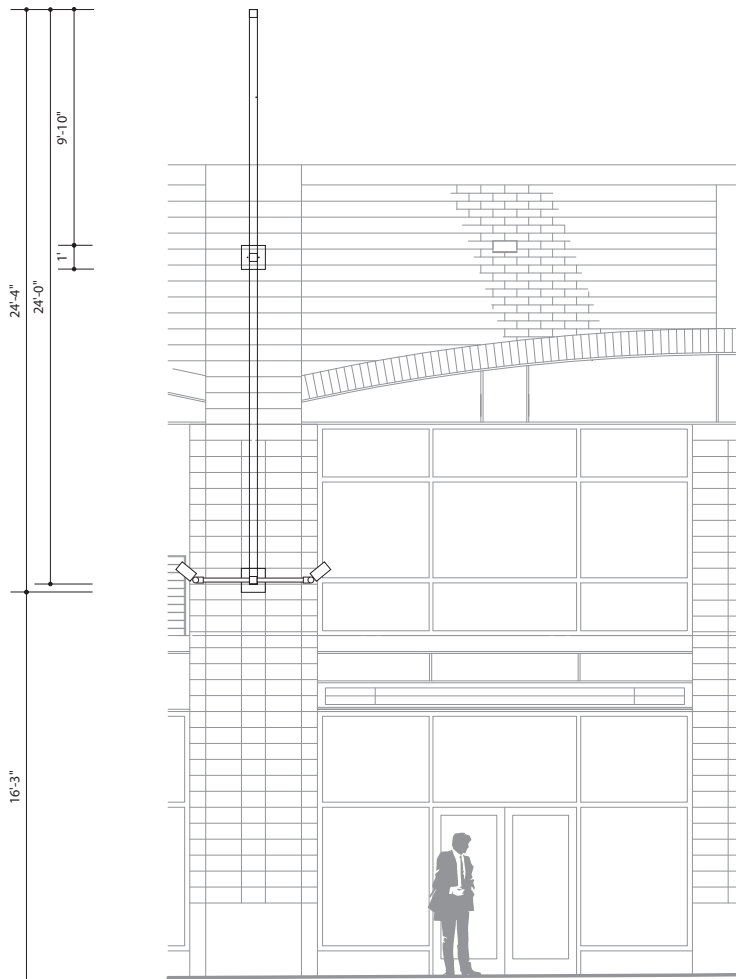
Existing Signage :

(1) one RGB LED Video Marquee mounted to wall to remain in place.

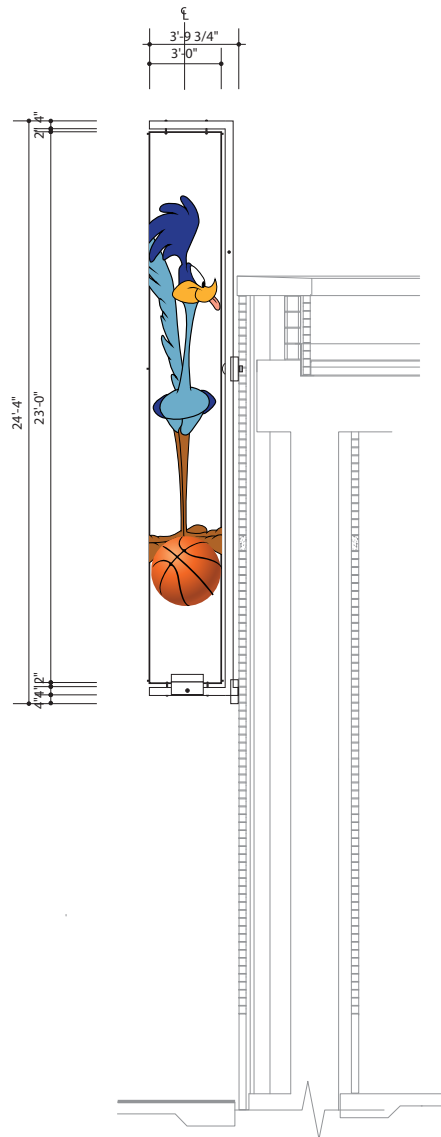
- **Previously Approved Sign**
- **Approved Video Board Sign with 144 square feet plus 68.5 square feet of additional signage.**
- **Total of 212.5 square feet.**
- **No change requested**

The graphic representations set forth are illustrative and alternative graphic designs are allowed within the size limits set forth.





Elevation View
approx. to scale



End View
approx. to scale

Existing Signage :

(8) eight digitally printed banners to remain.

**7/8 BANNERS TO REMAIN,
ONE BANNER TO BE REPLACED
DETAILED ON SHEET 2.8p**

Previously Approved Signage

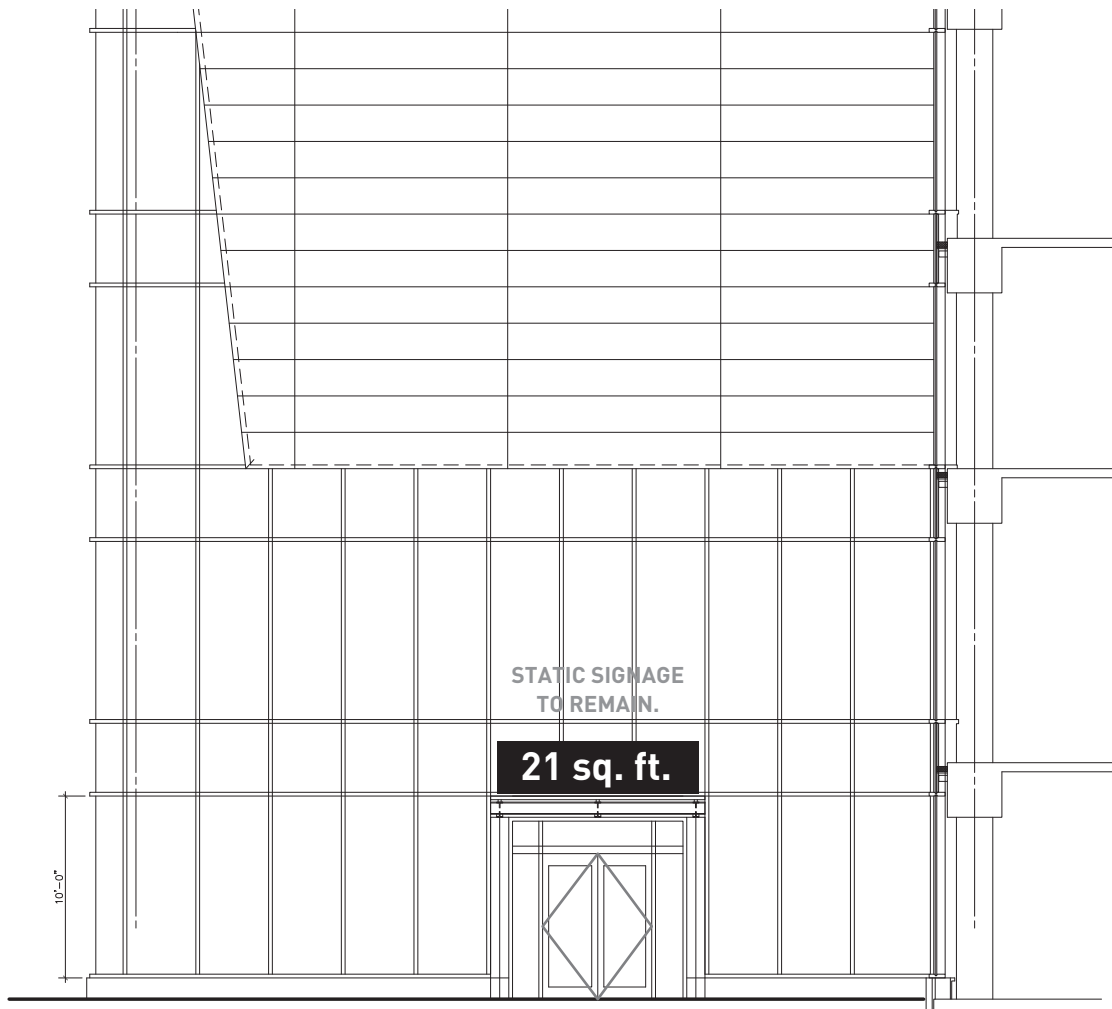
- Approved eight (8) banners at 72 square feet

- Other banners to remain/ no change.

- Proposed new banner will use all 72 square feet for logo.

The graphic representations set forth are illustrative and alternative graphic designs are allowed within the size limits set forth.





Elevation View @ team store
approx. to scale

Existing Signage :

(1) one non-illuminated
static Team Store Entrance
Display to remain in place.

- **Previously Approved Sign**
- **No Changes requested.**

The graphic representations set forth are illustrative
and alternative graphic designs are allowed within
the size limits set forth.

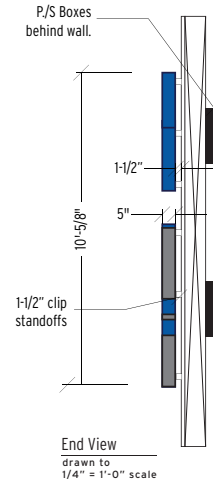
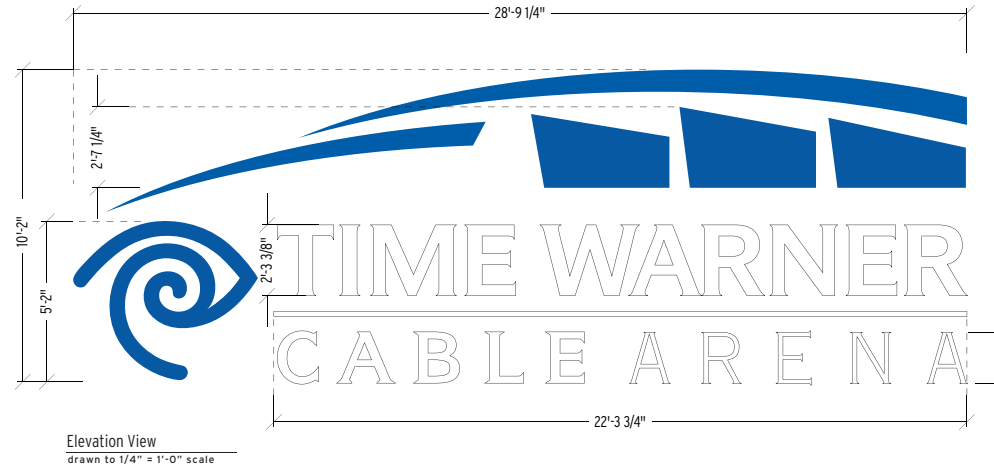


Manufacture and Install (1) one new set of haloilluminated channel letters reading "TIME WARNER CABLE ARENA" with underscore, arena roof shaping and eye logo.

This display will consume approximately 300 square feet.
This display will require (1) one 120V circuit, 20a min.

The graphic representations set forth are illustrative and alternative graphic designs are allowed within the size limits set forth.

New Sign
Requesting 300 Sq ft





The graphic representations set forth are illustrative and alternative graphic designs are allowed within the size limits set forth.

