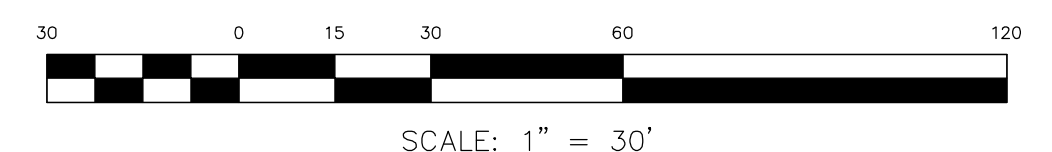



Wendwood Lane
Development Notes

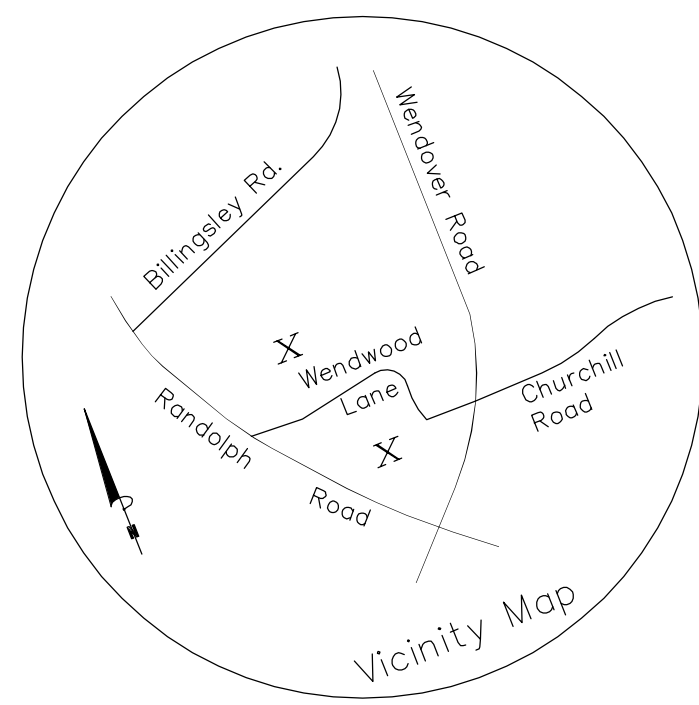
- Initial Submission: October 31, 2007
Revised Submission: December 12, 2008
Revised Submission: January 16, 2009



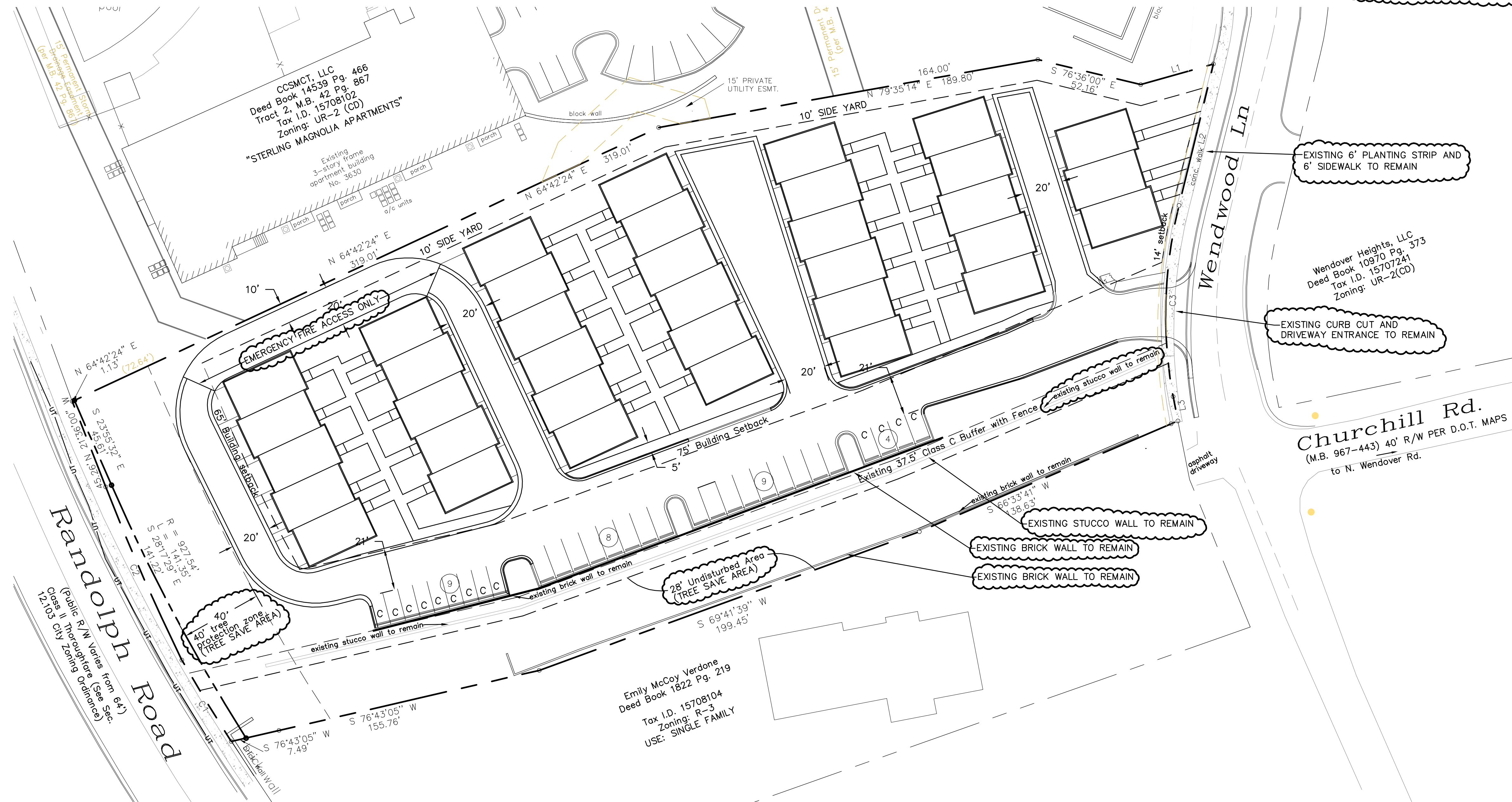
INCORPORATED
500-K Clanton Road
Charlotte, NC 28217
Phone: 704.525.2003
Fax: 704.525.2051
www.geosciencegroup.com

TECHNICAL DATA SHEET

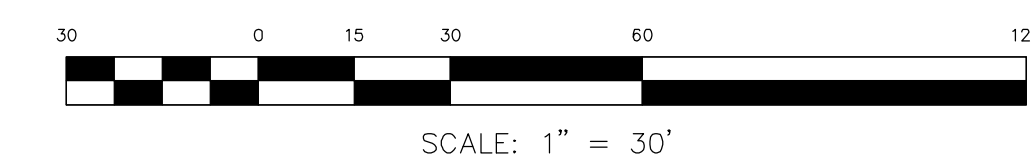
RZ-1/



SITE DATA:
TAX PARCEL: 15708103
SITE AREA: 2.577 ACRES
EXISTING ZONING: UR-2(CD)
PROPOSED ZONING: UR-2(CD) SPA
PROPOSED NUMBER OF UNITS: 36
PROPOSED DENSITY: 13.97 UNITS/ACRE
MINIMUM PARKING REQUIRED: 1 SPACE PER UNIT
MAXIMUM PARKING: 2 SPACES PER UNIT
PARKING PROVIDED: 2 GARAGE SPACES PER UNIT
PLUS 30 SURFACE SPACES
(GARAGE SPACES COUNT TOWARD THE MINIMUM REQUIRED SPACES BUT NOT THE MAXIMUM ALLOWED SPACES)
MAXIMUM HEIGHT: NOT TO EXCEED 40'
MAXIMUM FLOOR AREA RATIO (FAR): 1
TREE SAVE AREA: 0.58 ACRES: 22.7% OF SITE AREA

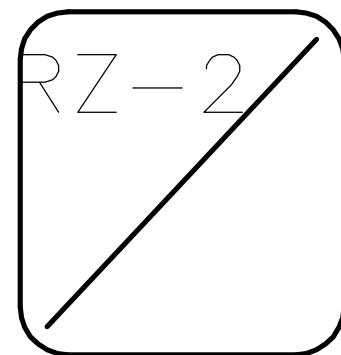


FOR PUBLIC HEARING
2008-019



WENDWOOD VIEW
THE BOULEVARD COMPANY
CHARLOTTE, NORTH CAROLINA

ILLUSTRATIVE SITE PLAN





FRONT ELEVATION
NOT TO SCALE



REAR ELEVATION
NOT TO SCALE



LEFT SIDE ELEVATION
NOT TO SCALE



RIGHT SIDE ELEVATION
NOT TO SCALE



WENDWOOD VIEW
NOT TO SCALE



COURTYARD VIEW
NOT TO SCALE

DATE	
REV.	
DRAWING SCALE	
PROJECT DATE	
PROJECT NUMBER	
TASK	
PROJECT NAME	
PROJECT LOCATION	
PROJECT OWNER	
PROJECT MANAGER	
PROJECT ARCHITECT	
PROJECT ENGINEER	
PROJECT LANDSCAPE ARCHITECT	
PROJECT INTERIOR ARCHITECT	
PROJECT MECHANICAL ENGINEER	
PROJECT ELECTRICAL ENGINEER	
PROJECT PLUMBING ENGINEER	
PROJECT FIRE ENGINEER	
PROJECT STRUCTURAL ENGINEER	
PROJECT SPECIALTIES	
PROJECT NOTES	

GESSENCE GROUP
 1000 K. Clinton Road
 Charlotte, NC 28217
 Tel: 704.525.2500
 Fax: 704.525.2501
 www.gessencegroup.com

WENDWOOD VIEW
 THE BOULEVARD COMPANY
 CHARLOTTE, NORTH CAROLINA

BUILDING ELEVATIONS

RZ-3