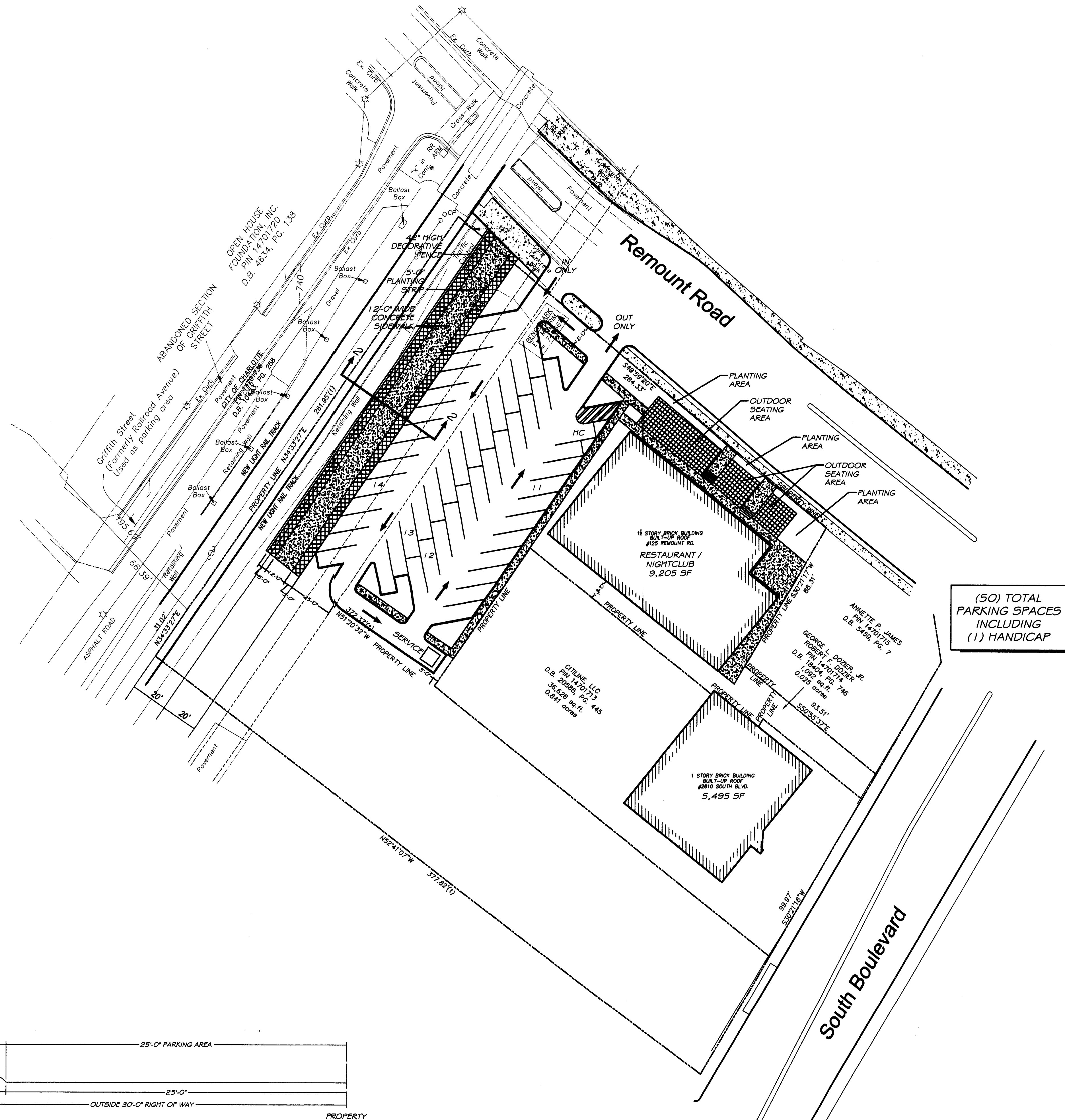


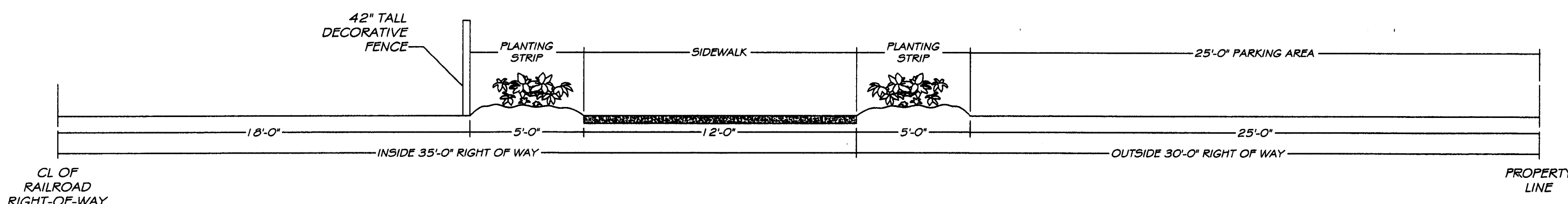
TOTAL ACREAGE: .99  
EXISTING ZONING: TOD-M  
PROPOSED ZONING: TOD-M (O)  
TOTAL BUILDING SF: 9,205

PARKING PROVIDED: 50 SPACES  
MAX. PARKING: (1) SPACE PER 150 SF  
MIN. PARKING: (1) SPACE PER 250 SF

1. THE SITE DEVELOPMENT DEPICTED ON THIS SITE PLAN IS INTENDED TO REFLECT THE ARRANGEMENT OF PROPOSED USES ON THIS SITE. HOWEVER, THE EXACT PLACEMENTS, CONFIGURATIONS, AND SIZES OF INDIVIDUAL SITE ELEMENTS MAY BE ALTERED DURING DESIGN DEVELOPMENT AND CONSTRUCTION DOCUMENT PHASES. THIS APPLIES TO ALL SITE ELEMENTS, INCLUDING OUTDOOR SEATING AREAS, SIDEWALKS, DRIVEWAYS, PARKING SPACES AND OPEN SPACE AREAS.
2. THE BUILDING SHOWN ON THE PLAN IS AN EXISTING BUILDING THAT IS INTENDED TO BE REHABILITATED BY THE DEVELOPER.
3. DECORATIVE FENCE, 12' SIDEWALK AND (2) 5' PLANTING STRIPS IN THE TRANSIT RIGHT OF WAY TO BE INSTALLED BY THE DEVELOPER.
4. TRASH AREA TO BE SCREENED FROM VIEW.
5. DEVELOPMENT OF THE SITE PLAN, AS SHOWN, INCLUDING PARKING, REQUIRES ENCROACHMENT INTO THE CITY CATS RIGHT-OF-WAY.



(50) TOTAL  
PARKING SPACES  
INCLUDING  
(1) HANDICAP



2 CROSS SECTION  
SCALE: 1/4" = 1'-0"

1 PLAN  
SCALE: 1" = 30'

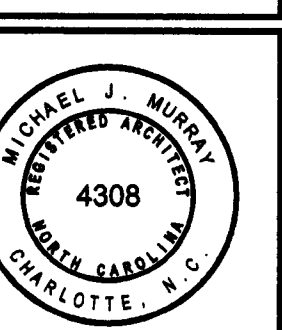
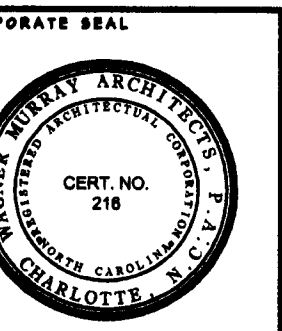
WAGNER MURRAY  
ARCHITECTS, P.A.

1000 WEST MOREHEAD STREET  
SUITE 120  
CHARLOTTE, NC 28208  
PHONE: (704) 372-8603  
FAX: (704) 335-0381

THIS DRAWING, THE DIMENSIONS OF WHICH ARE 30" X 42", IS THE PROPERTY OF WAGNER MURRAY ARCHITECTS, P.A. AND MAY NOT BE USED OR REPRODUCED WITHOUT THEIR WRITTEN PERMISSION.

NOT  
RELEASED  
FOR CONSTRUCTION

CORPORATE SEAL



REVISION NO. DESCRIPTION

REVISION	NO.	DESCRIPTION

CITILINE  
RESORTLINE PROPERTIES  
125 REMOUNT RD  
CHARLOTTE, NC

SHEET TITLE

SITE PLAN

PROJECT NO.

CIT01A

FILE NAME

AS1

DATE

08.17.07

DRAWN BY

RT

CHECKED BY

HLM

SHEET NO.

AS1

WAGNER MURRAY ARCHITECTS, P.A.  
1000 West Morehead Street, Suite 120, Charlotte, North Carolina 28208 Phone: 704.372.8603 Fax: 704.335.0381