

**Petition #:** **2006-109**

**Petitioner:** Parks Hunter

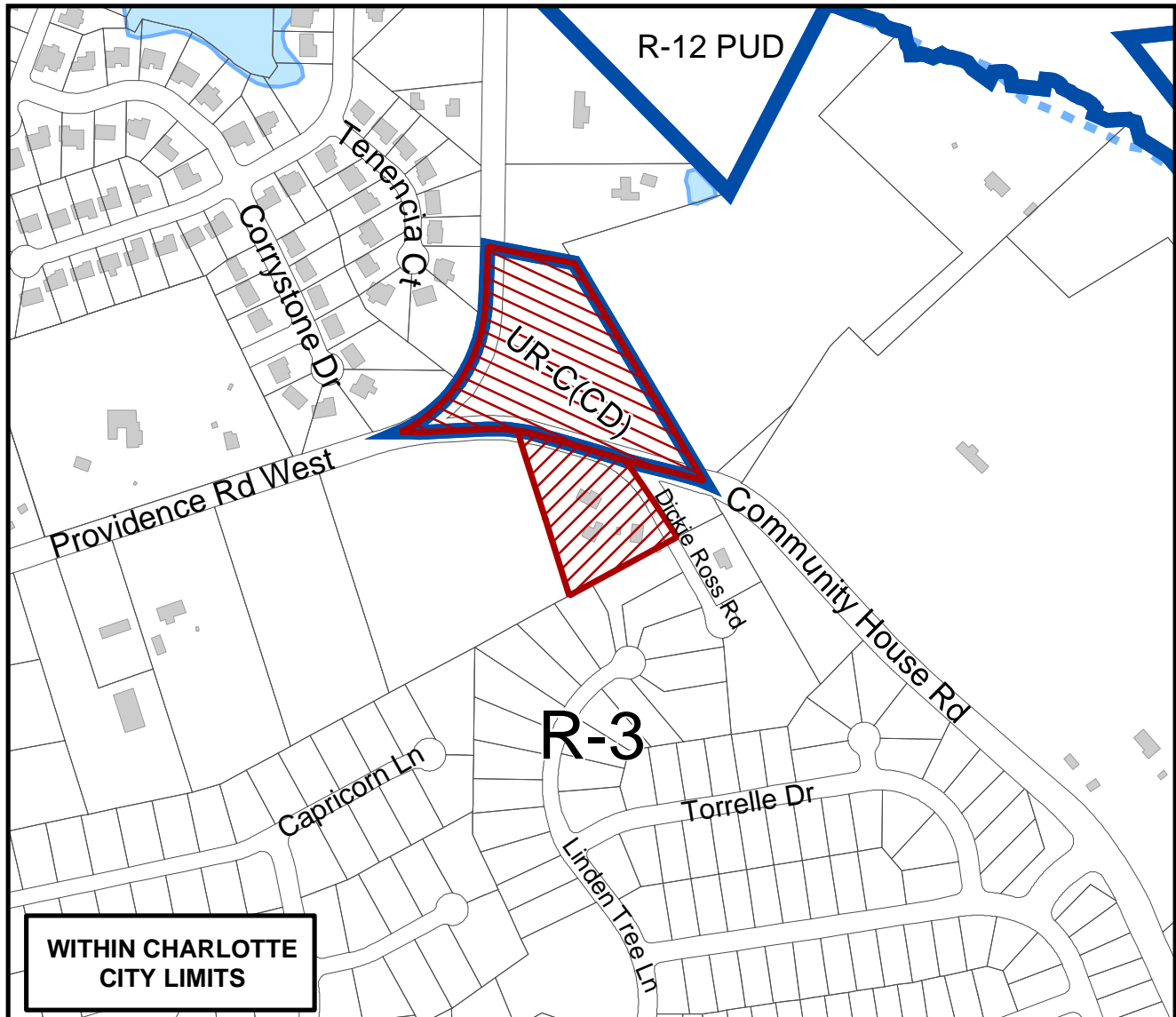
**Zoning Classification (Existing):** R-3 and UR-C(CD)

(Single-family Residential, up to 3 dwelling units per acre and Urban Commercial District, Conditional)

**Zoning Classification (Requested):** INST(CD) and UR-C(CD) S.P.A.

(Institutional, Conditional and Urban Commercial District, Conditional, Site Plan Amendment)

**Acreage & Location :** Approximately 4.6 acres located on Community House Road between Providence Road West and Dickie Ross Road.



0 125 250 500 750 1,000 Feet

**Zoning Map #(s)** **182**

Map Produced by the  
Charlotte-Mecklenburg Planning Commission  
09-19-2006

