



Charlotte Douglas International Airport



Connecting the Carolinas to the World



The Economic Development Platform



- Generates nearly \$10 billion in annual economic impact
- 100,000 jobs are directly or indirectly supported by the Airport



Airport Expansion & Development...



New Parking Deck



- Construction is underway on a 3,200-space parking deck
- Will house Business Valet and additional public parking spaces
- Located at corner of Wilkinson Blvd. and Harlee Ave.



New **Runway**

- 9,000 ft. in length
- 4,300 ft. west of Runway 18R-36L
- Scheduled for completion in November 2009



Phase One: Clearing and Grading



- More than 9 million cubic yards of dirt was moved.

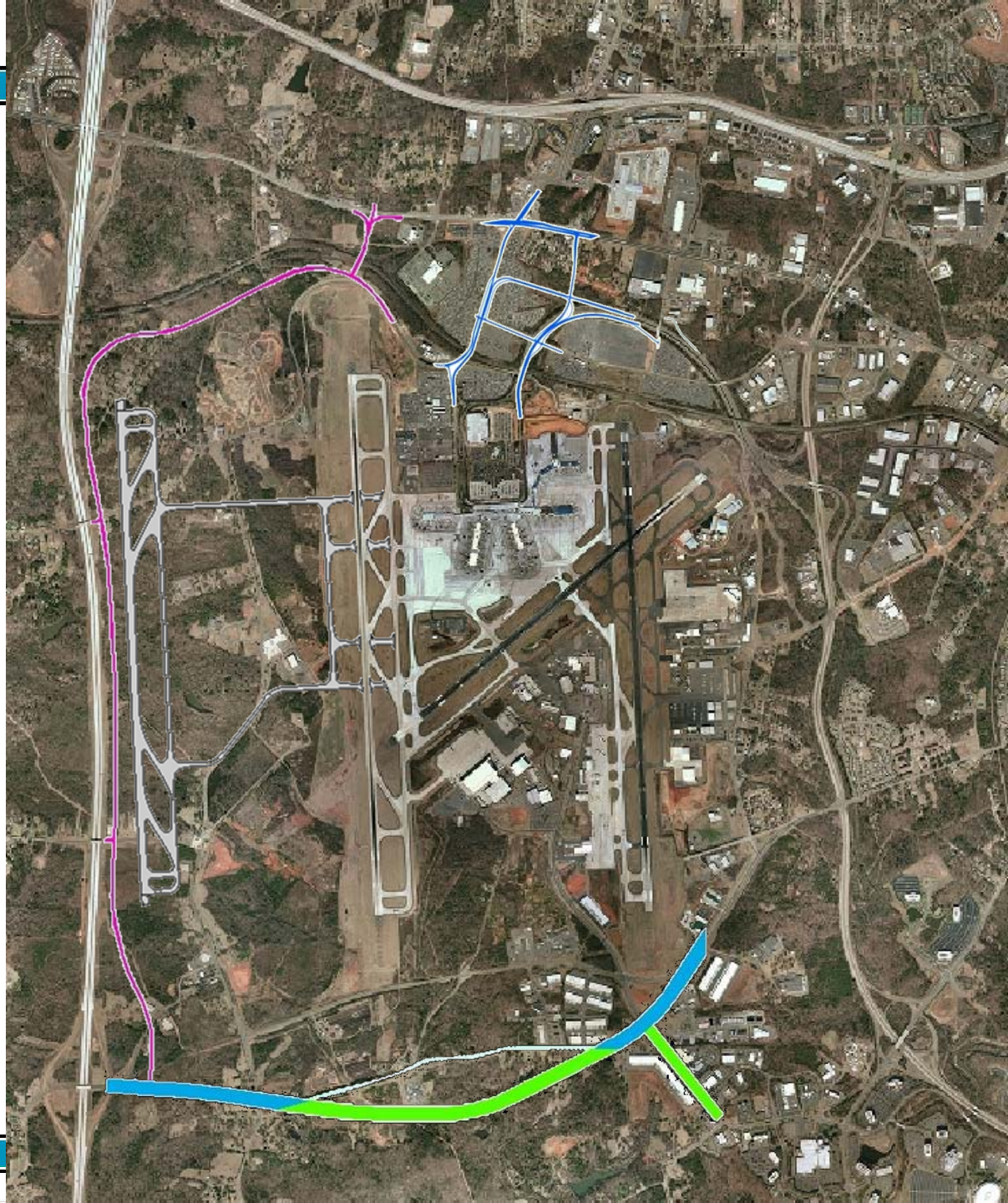


Phase Two: Paving and Lighting



Road Projects

- Old Dowd
- Wallace Neel
- West Blvd.
- Airport Entrance Road



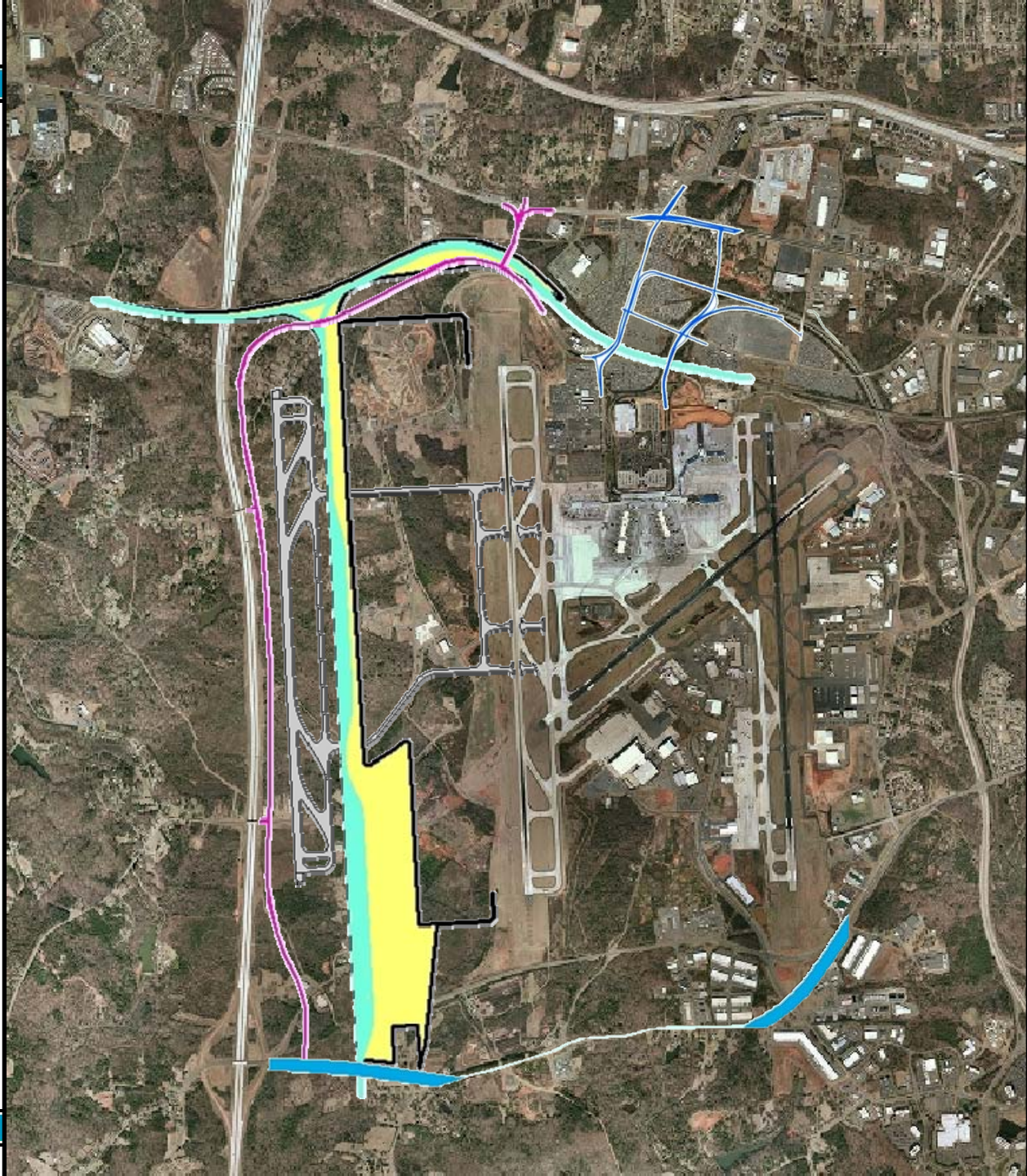


Current Intermodal Facility



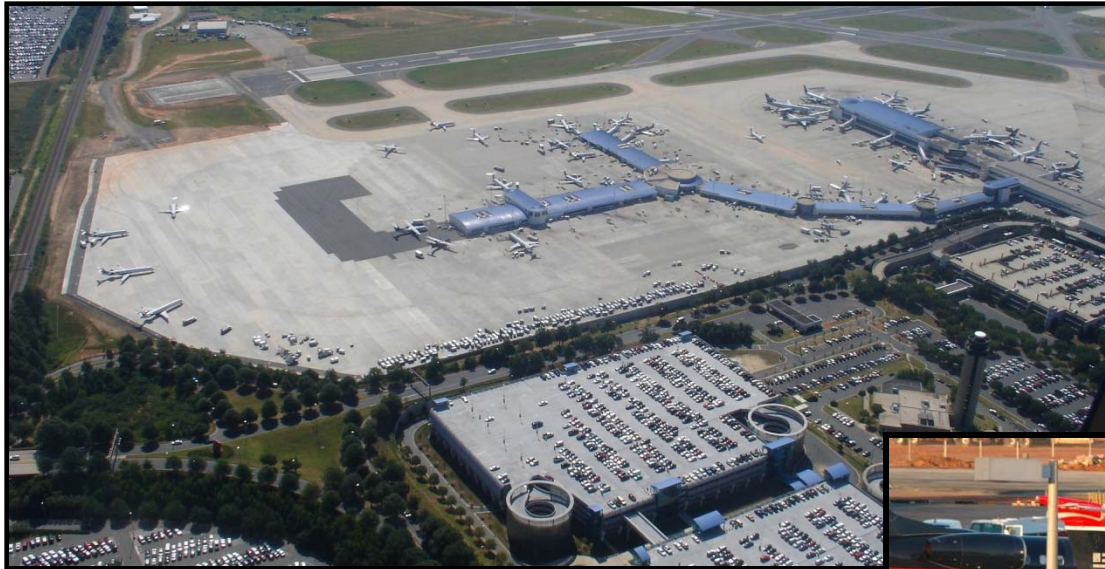
- This facility is nearing capacity; no room for expansion

Intermodal Facility





Concourse E



- Opened February 2002
- Recently expanded by adding 6 gates; planning for additional gates
- Currently has 32 total gates





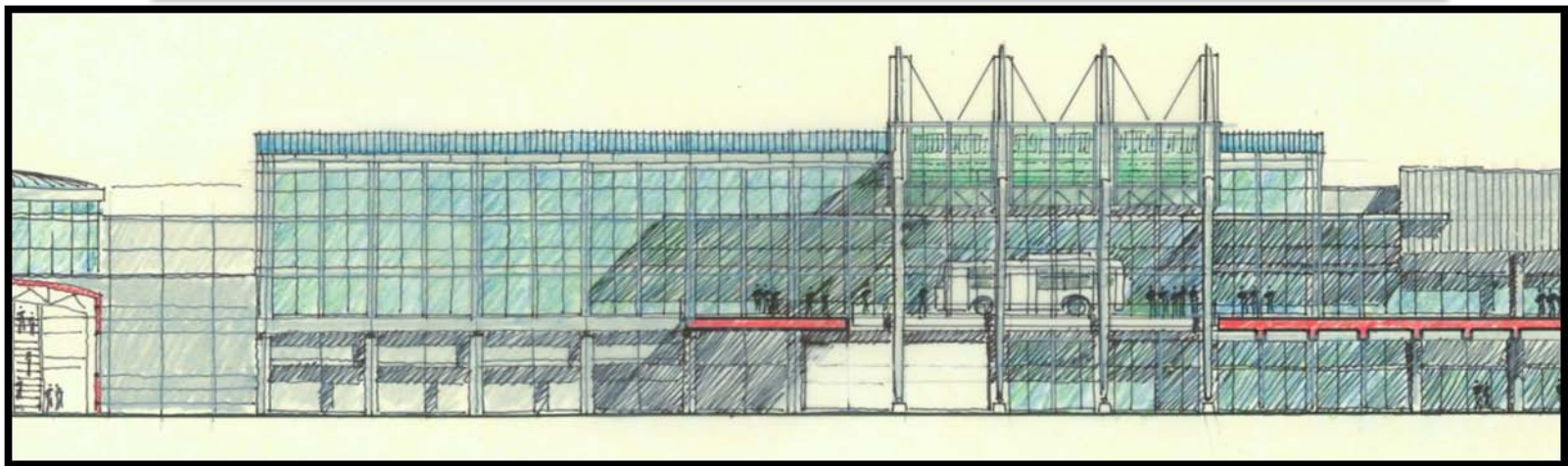
Checkpoint Expansion



- Interim Ticket Counter Renovations/Checkpoint Modifications

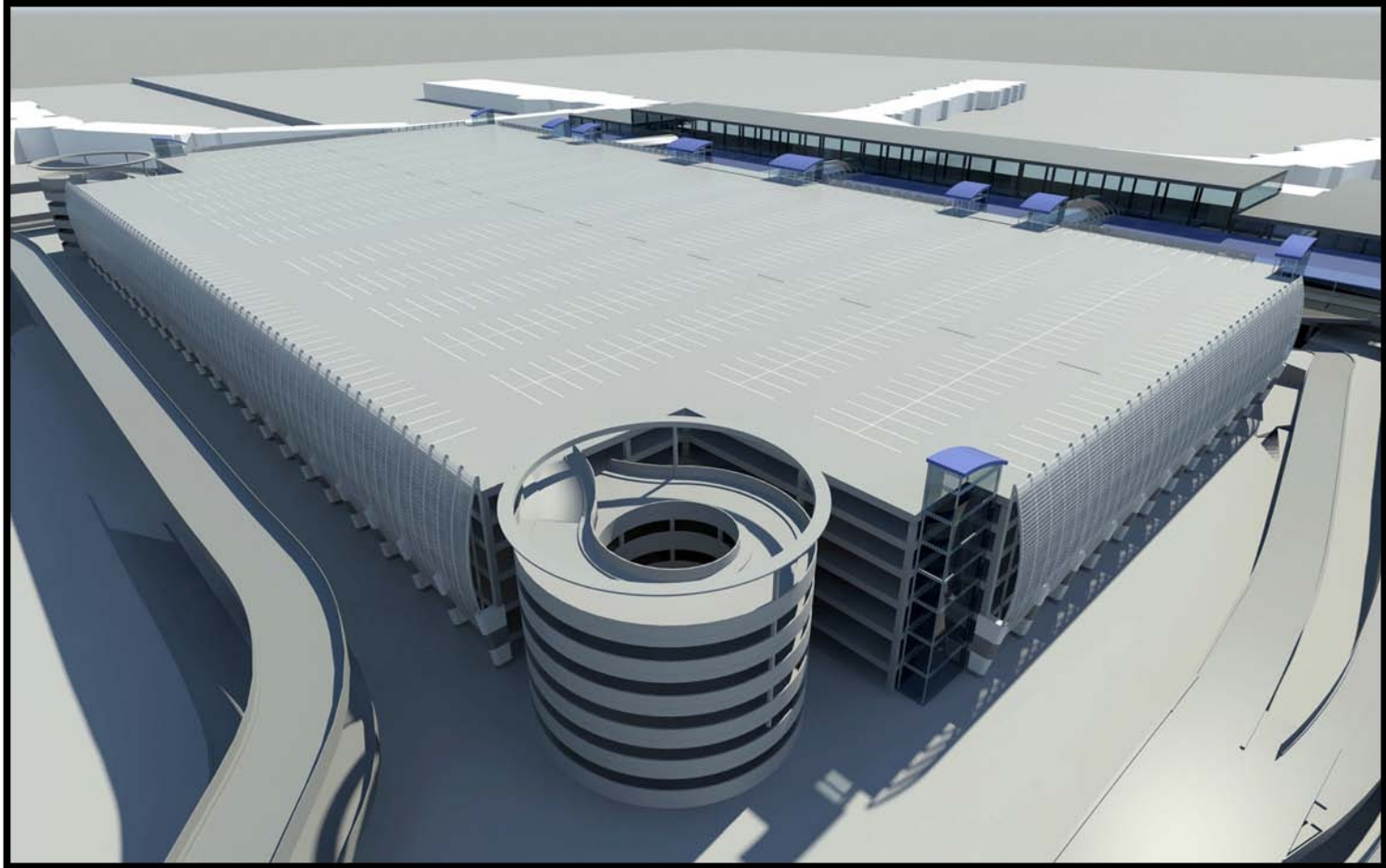


East Terminal Expansion/'E' Checkpoint





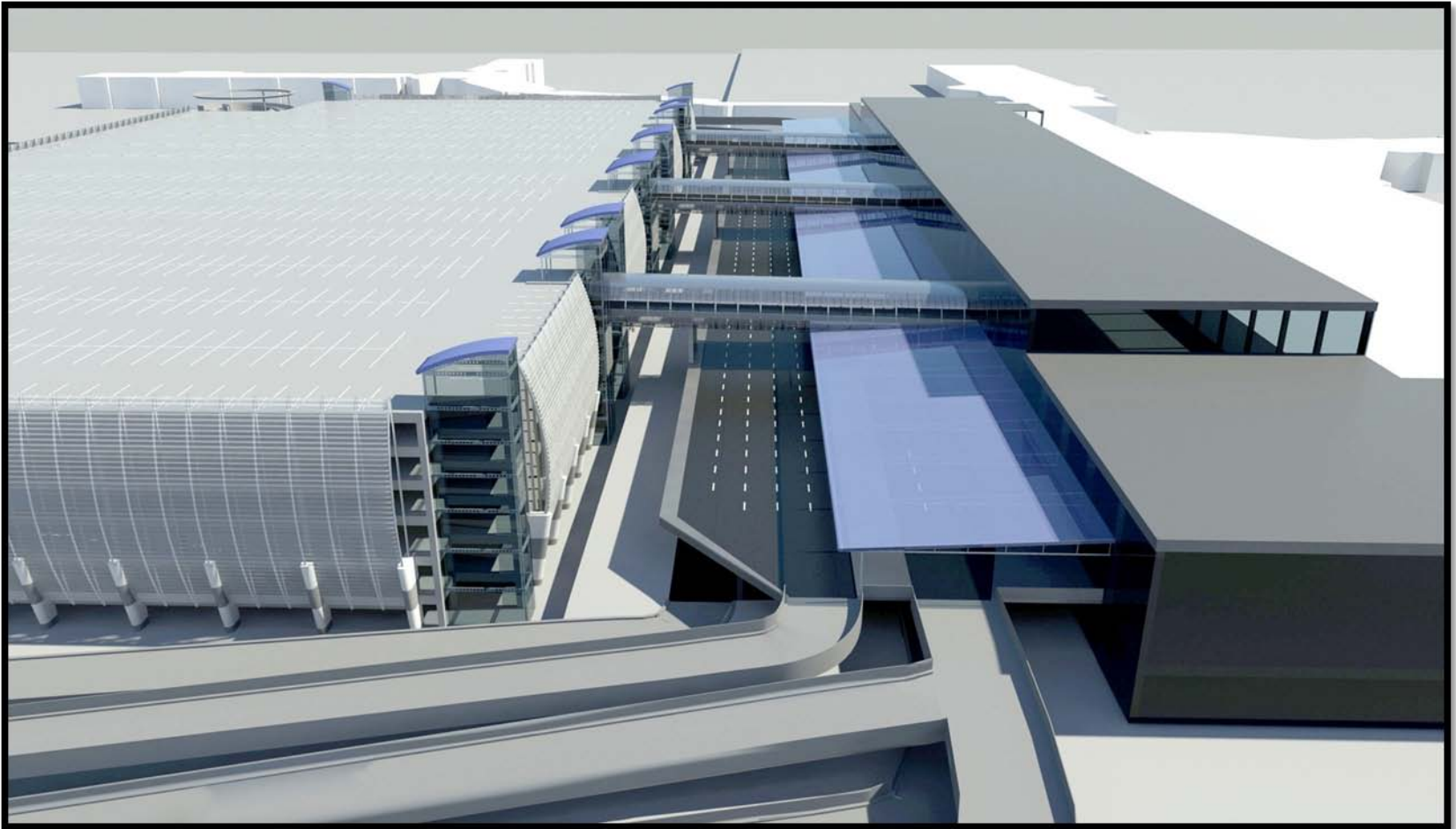
New Hourly Parking Deck



- **7,000 Space Public/Rental Car Parking Deck**



Terminal Roadway & Lobby Expansion





Airport Noise Compatibility Program





What is FAR Part 150?

- FAR – Federal Aviation Regulation
- Part 150 – Section Pertaining to Airport Noise Compatibility Planning
- Regulation addresses:
 - Development and review of Noise Exposure Maps and Airport Noise Compatibility Programs
 - Measuring noise on and around airports
 - Determining exposure of individuals to noise
 - Identifies land uses compatible within noise affected areas



CLT Part 150 Program

- Original Program established in 1987
- First update completed in 1997
- Second update started in 2002
- Restarted 2nd Update in 2008
- To date, the Airport has spent over \$68 million in mitigating noise around the Airport
- Current program consists of Noise Abatement, Land Use Control and Noise Mitigation measures



Measures in the Noise Compatibility Program

- Noise Abatement Measures
- Land Use Measures
- Noise Mitigation Measures



Noise Abatement Measures

- Periodic noise monitoring around the Airport
- Preferential use of Runway 5/23 for aircraft operations at night
- Established flight tracks that turn aircraft away from densely populated areas
- Designated areas for aircraft engine run-ups



Land Use Control Measures

- Promote compatible land use within the 65 DNL
- Pursue zoning for compatible development
- Establish an Airport Noise Overlay District



Noise Mitigation Measures

- Establish a public information program for noise issues
- Sound insulate homes, schools and churches within the 65 DNL noise contour
- Acquire mobile homes within the 70 DNL noise contour
- Acquire residential property within the 75 DNL noise contour



2008 Program Update

- Current update was started in July 2008
- Airport contracted with Andrew S. Harris, Inc. to complete the Program Update
- Purpose of the update
 - Produce new Noise Contour Maps
 - Review existing program measures and make appropriate adjustments
 - Determine if additional measures are needed for the program
 - Renew focus on land use control measures



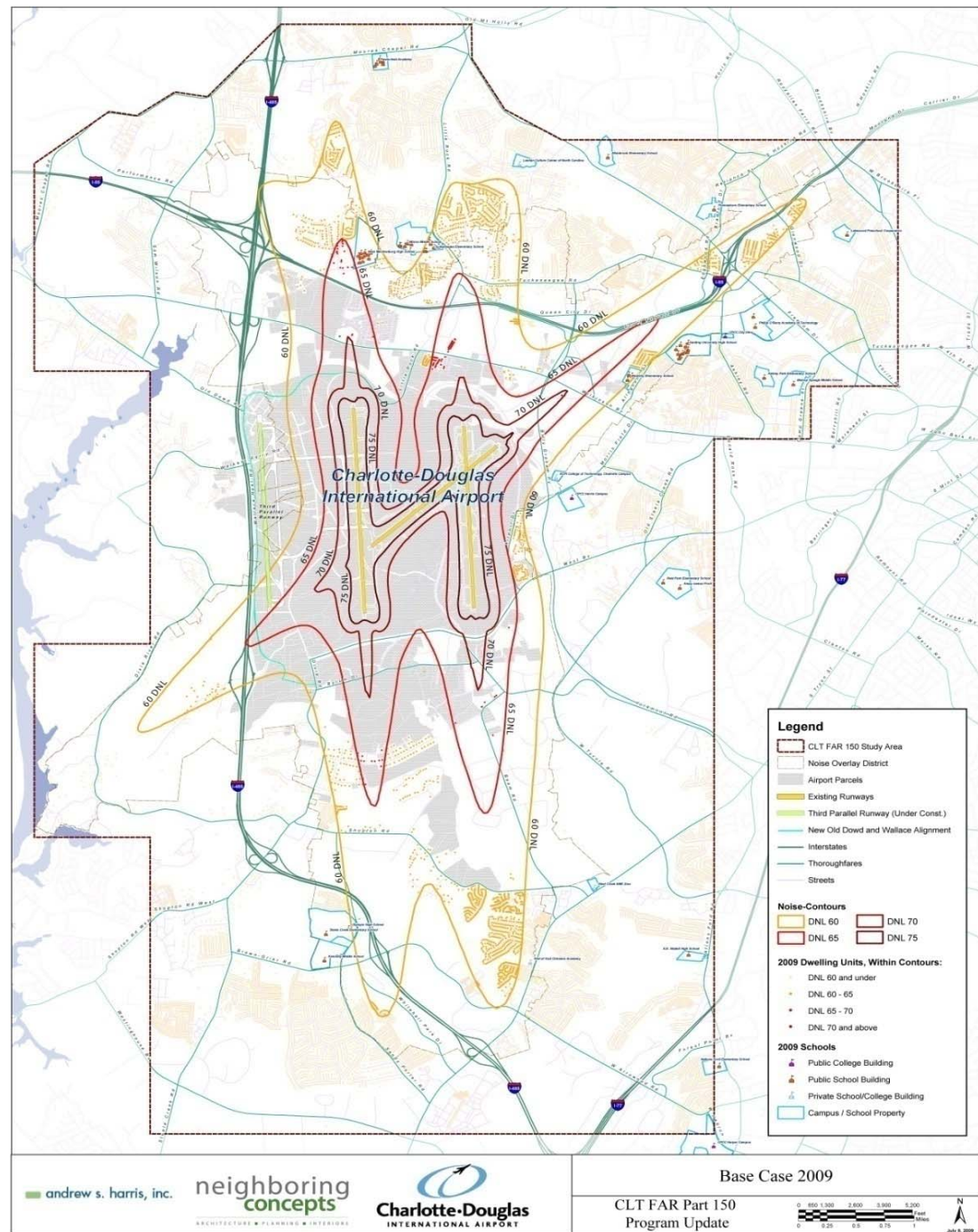
2008 Program Update

- Progress to date:
 - Completed Aircraft Fleet Mix & Operations Forecast
 - Reviewed Program Measures
 - Generated 2009 Base Contours
 - Generated 2014 Base Case Contours and Alternatives
 - Held Three Public Meetings During the Process

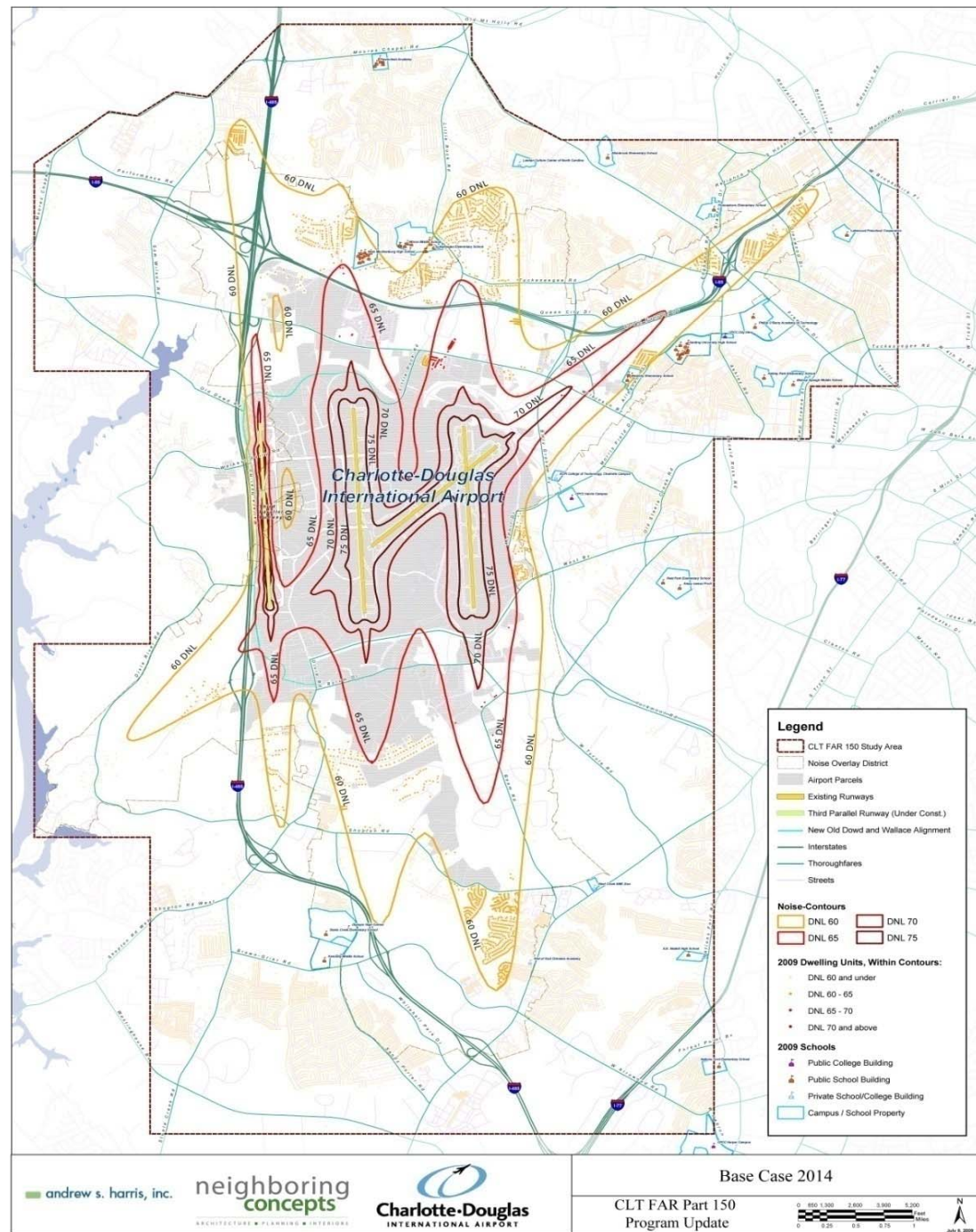


Noise Exposure Maps

- 2009 Base Case
- 2014 Base Case



2014 Base Case





Next Steps In Study

- Complete Draft Report
 - Noise Exposure Maps
 - Updated Noise Compatibility Program
- Give Draft to FAA for Initial Review
- Hold Public Hearing in January
- Complete Final Report
- Submit Final Report to FAA by January 2010



Charlotte Douglas International Airport



Connecting the Carolinas to the World