

PROSPERITY HUCKS ACTIVITY CENTER

13 Activity Center - North Core

VISION
This is the heart of the Prosperity Hucks Activity Center, containing a variety of uses, with an emphasis on retail. It will establish a sense of place for the community, promote walking, and provide spaces for gathering.

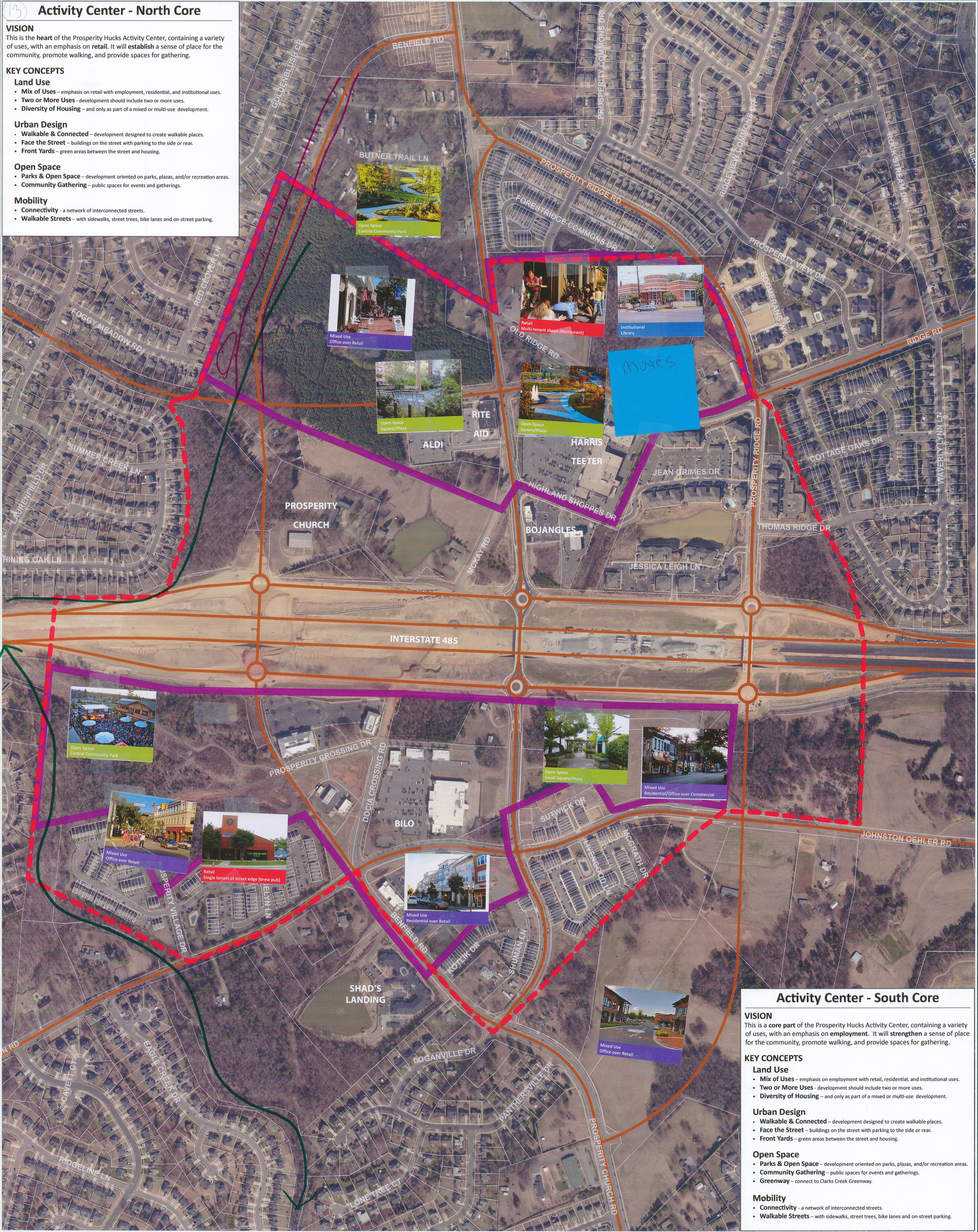
KEY CONCEPTS

- Land Use**
- **Mix of Uses** – emphasis on retail with employment, residential, and institutional uses.
 - **Two or More Uses** - development should include two or more uses.
 - **Diversity of Housing** – and only as part of a mixed or multi-use development.

- Urban Design**
- **Walkable & Connected** – development designed to create walkable places.
 - **Face the Street** – buildings on the street with parking to the side or rear.
 - **Front Yards** – green areas between the street and housing.

- Open Space**
- **Parks & Open Space** – development oriented on parks, plazas, and/or recreation areas.
 - **Community Gathering** – public spaces for events and gatherings.

- Mobility**
- **Connectivity** - a network of interconnected streets.
 - **Walkable Streets** – with sidewalks, street trees, bike lanes and on-street parking.



Activity Center - South Core

VISION
This is a core part of the Prosperity Hucks Activity Center, containing a variety of uses, with an emphasis on employment. It will strengthen a sense of place for the community, promote walking, and provide spaces for gathering.

KEY CONCEPTS

- Land Use**
- **Mix of Uses** – emphasis on employment with retail, residential, and institutional uses.
 - **Two or More Uses** - development should include two or more uses.
 - **Diversity of Housing** – and only as part of a mixed or multi-use development.

- Urban Design**
- **Walkable & Connected** – development designed to create walkable places.
 - **Face the Street** – buildings on the street with parking to the side or rear.
 - **Front Yards** – green areas between the street and housing.

- Open Space**
- **Parks & Open Space** – development oriented on parks, plazas, and/or recreation areas.
 - **Community Gathering** – public spaces for events and gatherings.
 - **Greenway** – connect to Clarks Creek Greenway.

- Mobility**
- **Connectivity** - a network of interconnected streets.
 - **Walkable Streets** – with sidewalks, street trees, bike lanes and on-street parking.

