

Welcome



Elizabeth Area Plan Citizen Advisory Group
Meeting No. 4
January 6, 2010
5:30 – 7:00 p.m.
Room 280, Charlotte-Mecklenburg Government Center
600 East Fourth Street, Charlotte, NC 28202

Agenda

Meeting Purpose: Review Parks and Open Space, Greenways, and the Environment

Expected Outcome: Receive Information on Water Quality Issues and
Provide Input on Parks, Open Space, and Greenways

- | | |
|---|------------|
| 1. Welcome/Housekeeping Items | 5 minutes |
| 2. Review Advisory Group Meeting Schedule and Area Plan Adoption Process
Alan Goodwin and Kathy Cornett, Planning Department | 10 minutes |
| 3. Recap of Previous Meeting and Response to Questions and Issues
Alan Goodwin and Kathy Cornett, Planning Department | 10 minutes |
| 4. Informational Presentation on Environment/Water Quality
Rusty Rozzelle and Heather Sorensen,
Mecklenburg County Storm Water Services | 15 minutes |
| 5. Discussion of Parks, Open Space, and Greenways
Brian Conroy and Gwen Cook,
Mecklenburg County Park & Recreation Department | 20 minutes |
| 6. Breakout Exercise
Brian Conroy and Gwen Cook | 20 minutes |
| 7. Questions and Comments | 10 minutes |

Charlotte-Mecklenburg Planning Department
600 East Fourth Street, Charlotte, NC 28202
www.charlotteplanning.org

Elizabeth Area Plan Contacts:
Alan Goodwin: Agoodwin@CharlotteNC.gov
Kathy Cornett: KCornett@CharlotteNC.gov
Phone: 704/336-2205



Environment

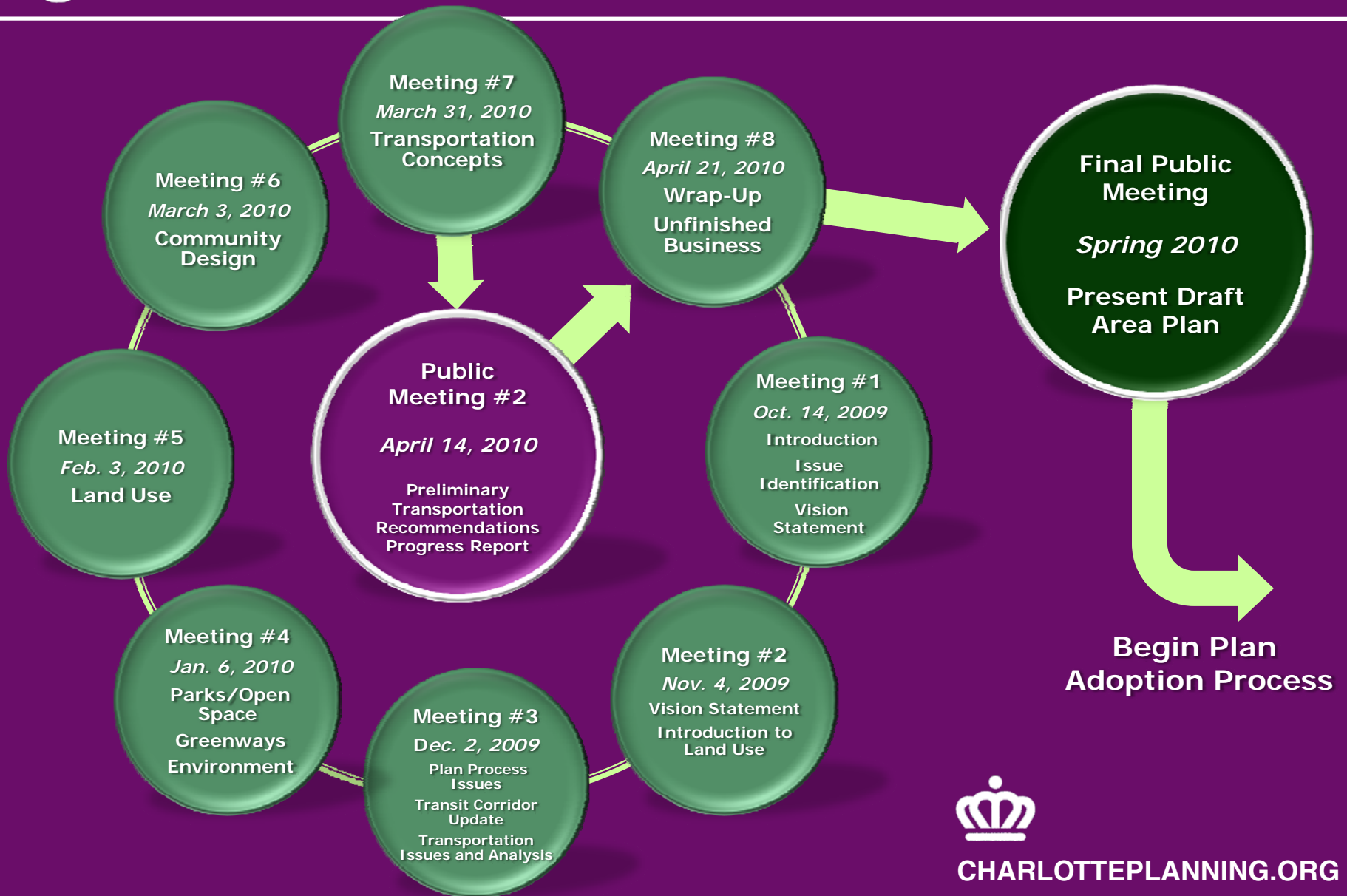
- Rusty Rozzelle, Water Quality Program Manager
 - Heather Sorensen, Environmental Specialist
- Mecklenburg County Storm Water Services

Parks, Greenways & Open Space

- Brian Conroy, Parks Planner
 - Gwen Cook, Greenway Planner
- Mecklenburg County Park & Recreation Department

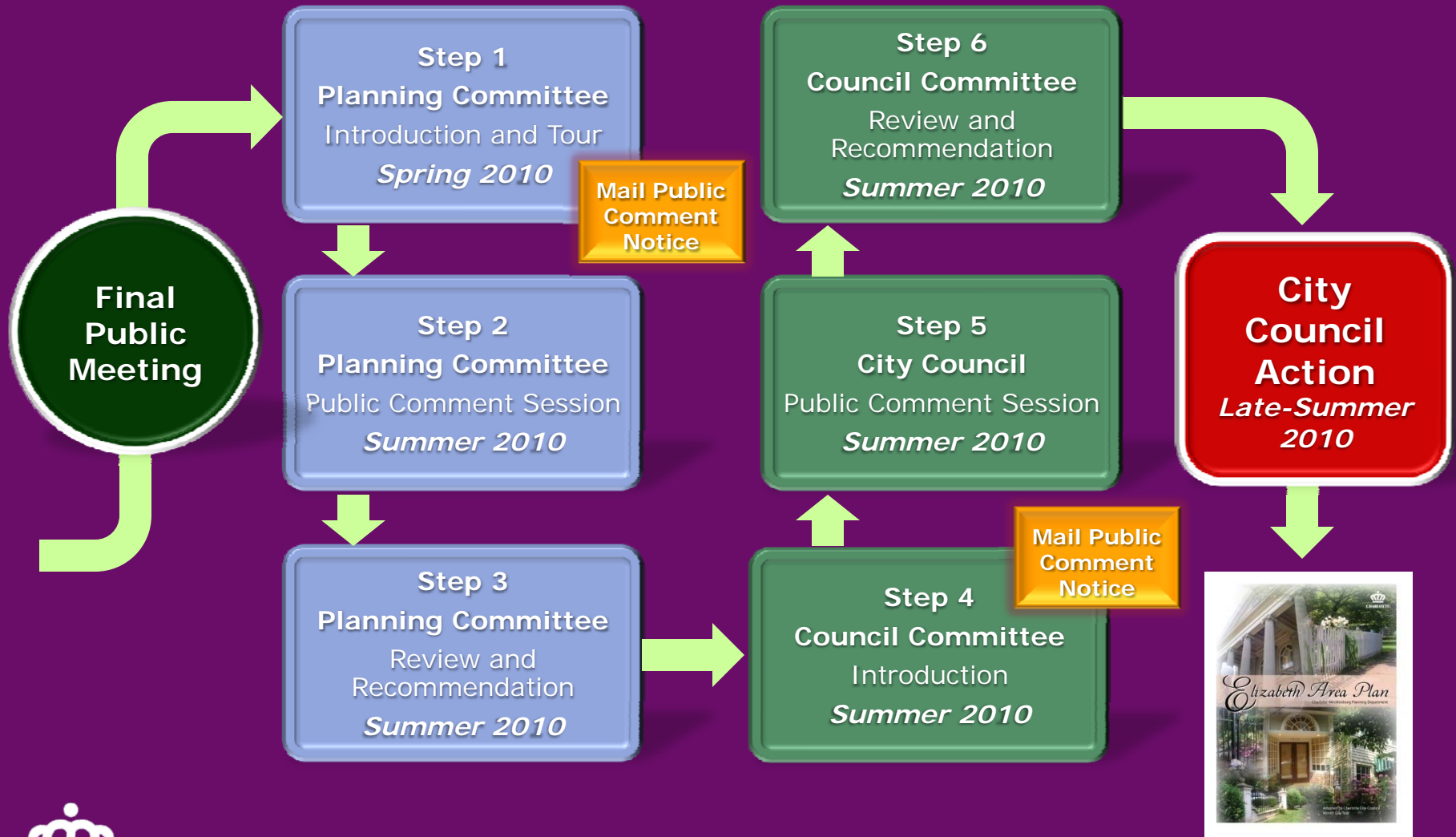


Advisory Group Meeting Schedule



Area Plan Adoption Process

(Schedule is subject to change)



Review/Summary of Meeting #3

Meeting #3

Dec. 2, 2009

Plan Process Issues
Transit Corridor Update
Transportation Issues
and Analysis

Danny Rogers - CATS

- Southeast Rapid Transit Corridor (Independence Boulevard Line), to be either Bus Rapid Transit (BRT) or light rail (LRT)
- Streetcar (Five Points through Uptown to Eastland Mall site via Elizabeth Avenue and Hawthorne Lane)

Brian Horton - CDOT

Melinda Dyk - Kimley-Horn

- Area traffic analysis with emphasis on East 7th Street
- East 7th Street widening to 4 lanes not an option per NCDOT's Long Range Transportation Plan (LRTP)
- May be possible to impose a "road diet" to reduce the number of travel lanes from 3 to 2 without a significant loss of service
- Break-out exercise to design future street cross-section



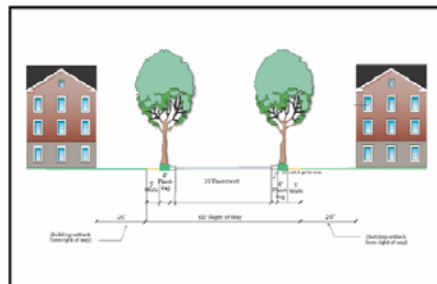
Results of 7th Street Breakout Groups

SUMMARY OF CITIZEN ADVISORY GROUP EAST SEVENTH STREET BREAKOUT EXERCISE Meeting held December 2, 2009

Breakout Exercise

At the conclusion of the Elizabeth Area Plan Citizen Advisory Group meeting held December 2, 2009, four breakout groups of roughly three to five people were formed to tackle an alternate future for East Seventh Street that is today three reversible lanes. Each group was given the below graphic on a 11-by-17-inch sheet of paper and cut-outs of new elements to slide around and paste down. The various cut-outs represented choices in travel lanes, turn lanes, intermittent medians, bicycle lanes, parking, planting strips, and sidewalk. It became quickly apparent to each group that not all elements could fit within the existing 38 feet of pavement or even 60 feet of right-of-way typically found today. Results from each group are on the next page.

In the end, all groups chose a conversion to just one travel lane in each direction with an intermittent median that could double as a pedestrian refuge island for crossing the street between two-way left-turn lanes. All but one group added parking, where possible between existing mature trees, or thereby alternating parking and planting strip. Only two groups added bicycle lanes, of which one group limited to residential sections, showing parking instead for commercial sections. Overall, it was a helpful exercise to visualize trade-offs, especially given physical constraints, and see common themes between results from this exercise and the previous survey completed by 365 respondents at the time of the Area Plan kick-off.

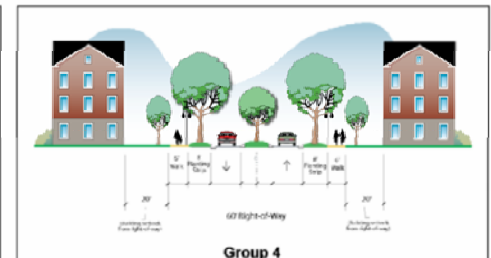
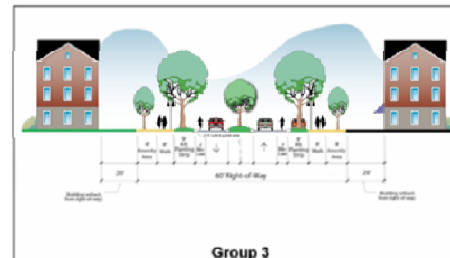
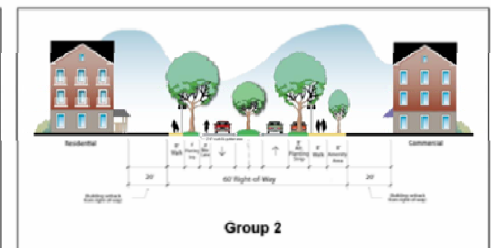
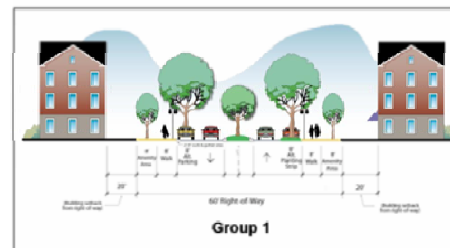


Above graphic represents existing typical section of East Seventh Street between Charlottesville and Laurel Avenues.

Answer Options	Percent
Street Trees	79%
Additional crosswalks	64%
Wider planting strips	55%
Wider sidewalks	55%
Bicycle lanes	50%
Left-turn lanes	32%
Reversible travel lanes	31%
On-street parking	18%
Fewer driveway entrances	13%
Additional travel lanes	5%

Above table summarizes survey responses to question: "What transportation and street/scene elements do you think should be incorporated on East Seventh Street?"

East Seventh Street – Breakout Groups



These pages are included in your handout package and also posted to the Elizabeth Area Plan web page.



Citizen Advisory Group Comments and Staff Responses

1. Information should be provided to the CAG ahead of time so that members can review it prior to the meeting, even if only in draft form. Also, CAG members should be provided with interim work products to review between meetings.

Planning staff will make every effort to provide meeting materials, such as agendas, presentation materials, and handouts, at least two days prior to the meeting. If work products such as recommendations, area plan document text, tables, graphics, maps, and the like are completed by staff and have been reviewed and approved by Planning leadership, they will be provided to the CAG for review between meetings whenever it is practical to do so.

2. A recap of the previous meeting should be provided at the start of the next meeting, where staff could review what had been discussed and provide any follow-up actions that have been taken in the interim.

Each future CAG meeting will begin with a recap of the prior meeting's discussions. Staff will update the members on any follow-up actions taken in the interim. Each meeting will feature PowerPoint slides and a handout to aid in this update.

3. There should be a schedule or flowchart provided at each meeting showing where we are in the overall area plan process.

The printed agenda for each future CAG meeting will include a flow chart and schedule showing where the meeting fits into the overall plan schedule. This will also be presented as a PowerPoint slide at the beginning of the meeting.

4. The area plan process and plan adoption process should be explained, specifically what actions are taken/needed and when and in what order they occur.

A flow chart with tentative schedule has been prepared and will be presented and discussed at the start of the next meeting. It will also be included in each meeting's PowerPoint presentation. The schedule will be updated as circumstances dictate.



5. Consider finishing one area of the plan (e.g. Land Use) before moving on to another topic, rather than covering a different topic from one meeting to the next.

Staff will make a concentrated effort to stress the linkages between topics during each meeting and provide a recap of the previous meeting, issues discussed, any actions taken, follow-up, etc., which should help to bridge any gaps and ensure that thoughts don't get lost. While we certainly understand that moving from topic to topic can take some extra "ramp up" time at each meeting, staff proposes that we continue with the method for the following reasons:

- All of the topics are interrelated, making it difficult to finish discussing one and then moving on to the next. For example, land use will play into the discussion regarding community design and transportation, and vice versa.
- Many times, the topics/meetings need materials prepared, information gathered, responses developed, etc. that can't be accomplished in the time between meetings.
- The schedule recognizes that some topics may take more discussion time and there is time built into the process to allow for this. It's anticipated that this discussion will focus on specific topic issues at that point.

6. How does staff weigh the various suggestions and ideas that are received? Many of these are personal preferences and may not be the majority opinion on issues.

Suggestions and ideas provided either through surveys, issue identification exercises, public meetings, or the Citizen Advisory Group process, are evaluated and considered in the light of the City's various planning policies and frameworks (e.g. General Development Policies, Centers, Corridors, and Wedges Development Framework, Urban Street Design Guidelines, district plans, etc.). If suggestions and ideas are incorporated into the plan recommendations and presented for consideration, an effort is made to achieve consensus of the group on the recommendations whenever possible. If it is not possible to achieve consensus on key issues, the draft plan may move forward to the plan adoption process with multiple recommendations, and it will ultimately fall to City Council to choose between them.

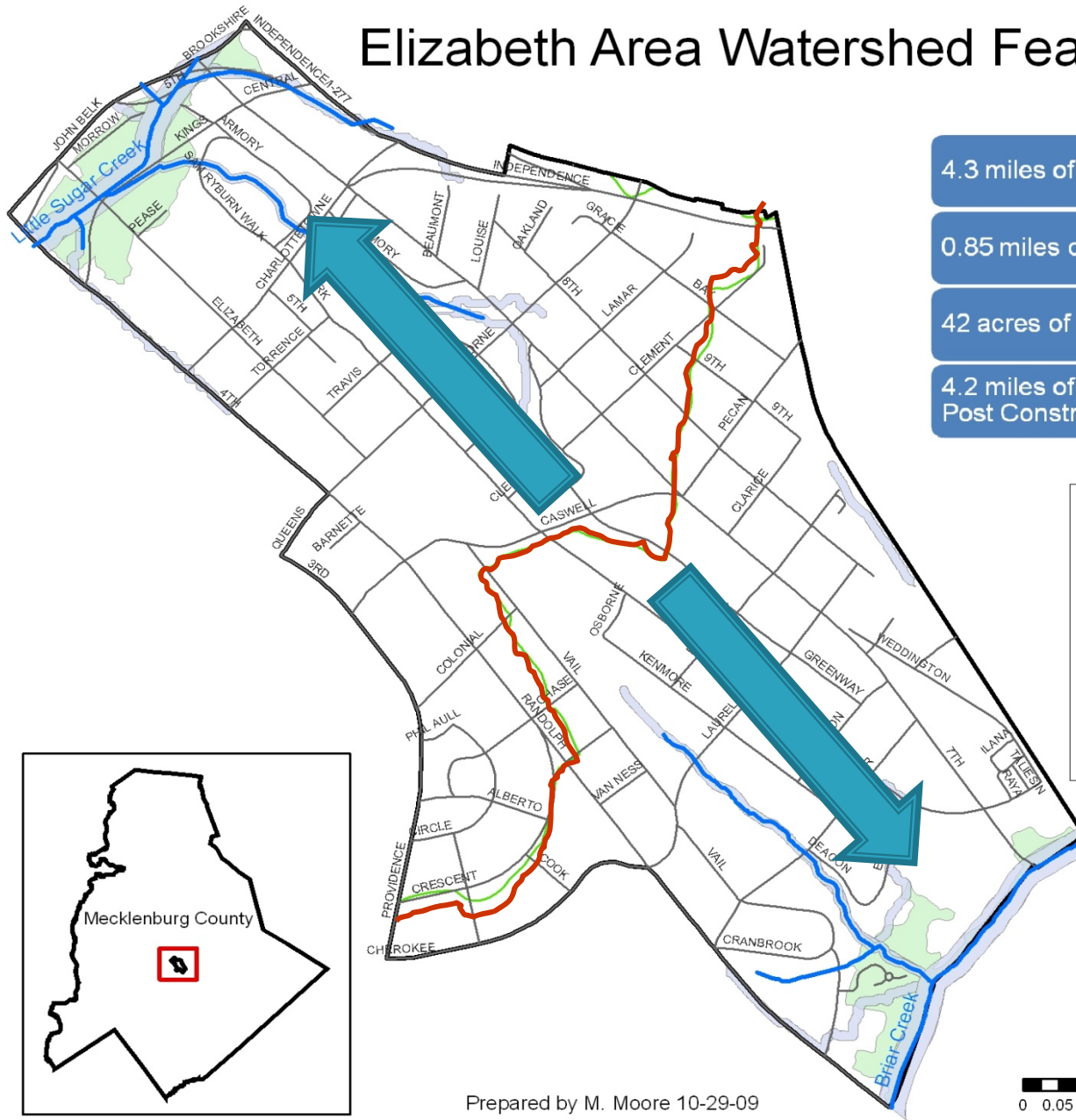
7. The advisory group would like to have more interactive exercises and opportunities for give and take, such as the process used to formulate the draft vision statement.

Future CAG meetings will include more opportunities for interaction among group members and between the members and staff, whenever possible.

Elizabeth Area

- **Surface Water Resources**
- **Water Quality Conditions**
- **Pollution Sources**
- **What is Being Done to Protect These Waters**
- **What You Can Do To Help**

Elizabeth Area Watershed Features



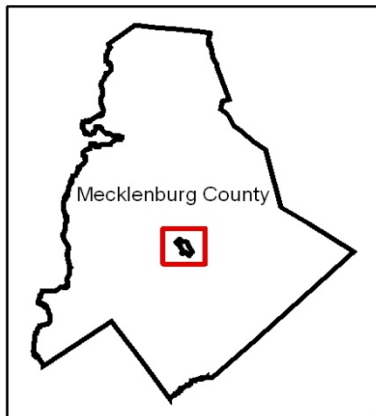
4.3 miles of stream (that drain ≥ 50 acres)

0.85 miles of FEMA streams (drain ≥ 640 acres)

42 acres of regulated FEMA floodplain

4.2 miles of stream protected by buffers (SWIM & Post Construction Ordinance buffers)

- Streams
- Roads
- Elizabeth Area Boundary
- Drainage Divide
- FEMA Floodplain
- Stream Buffers (SWIM & PCO)

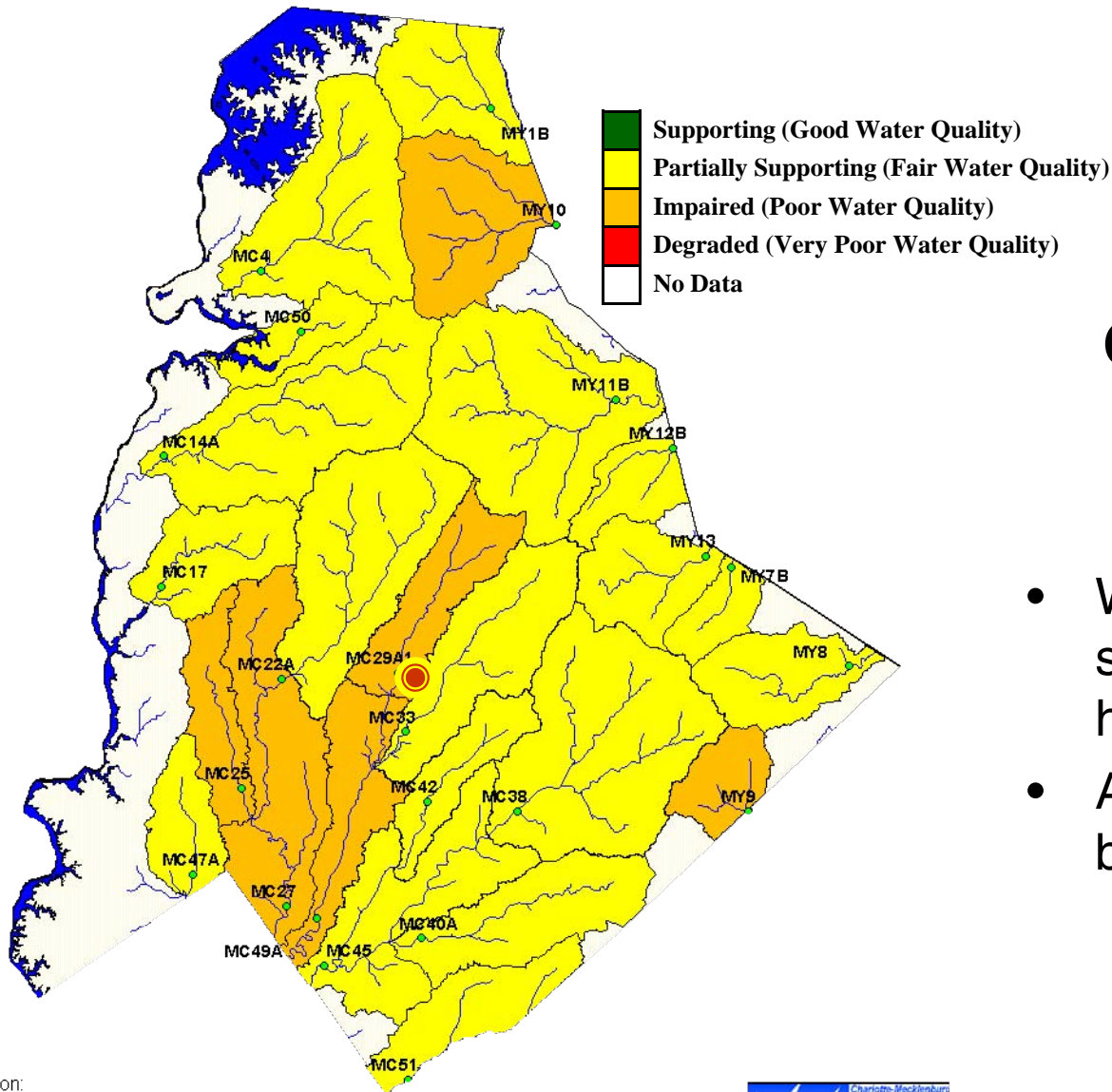


Prepared by M. Moore 10-29-09

0 0.05 0.1 0.2 0.3 0.4 Miles



**Water Quality
Stream Use-Support Index
September 2009**



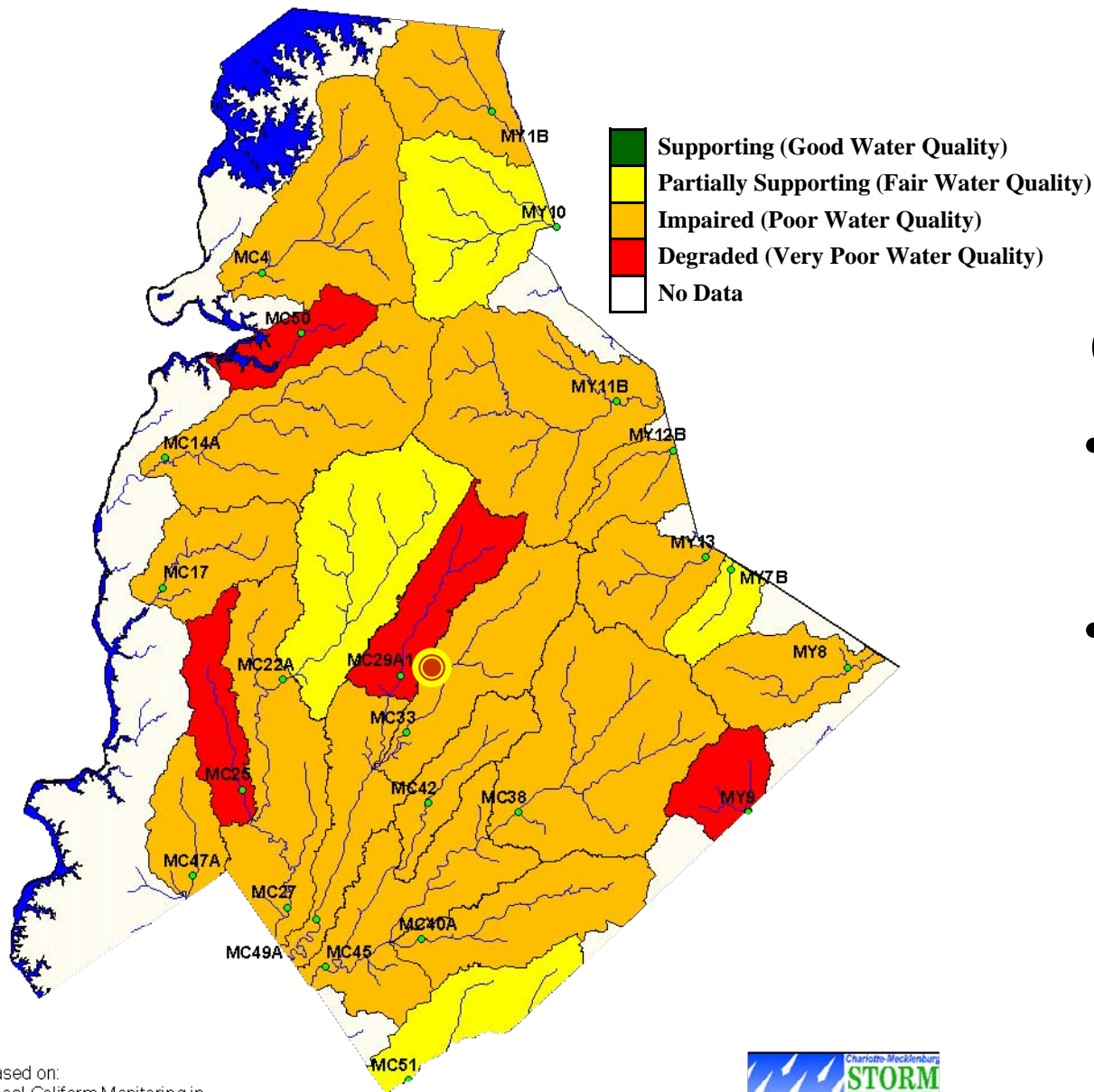
General Water Quality Conditions

- Water quality not suitable for prolonged human body contact.
- Aquatic life present but minimal diversity.

Based on:
Fecal Coliform, Metals, Phosphorous, Physical
Parameters and Biological / Habitat Monitoring
in Charlotte-Mecklenburg



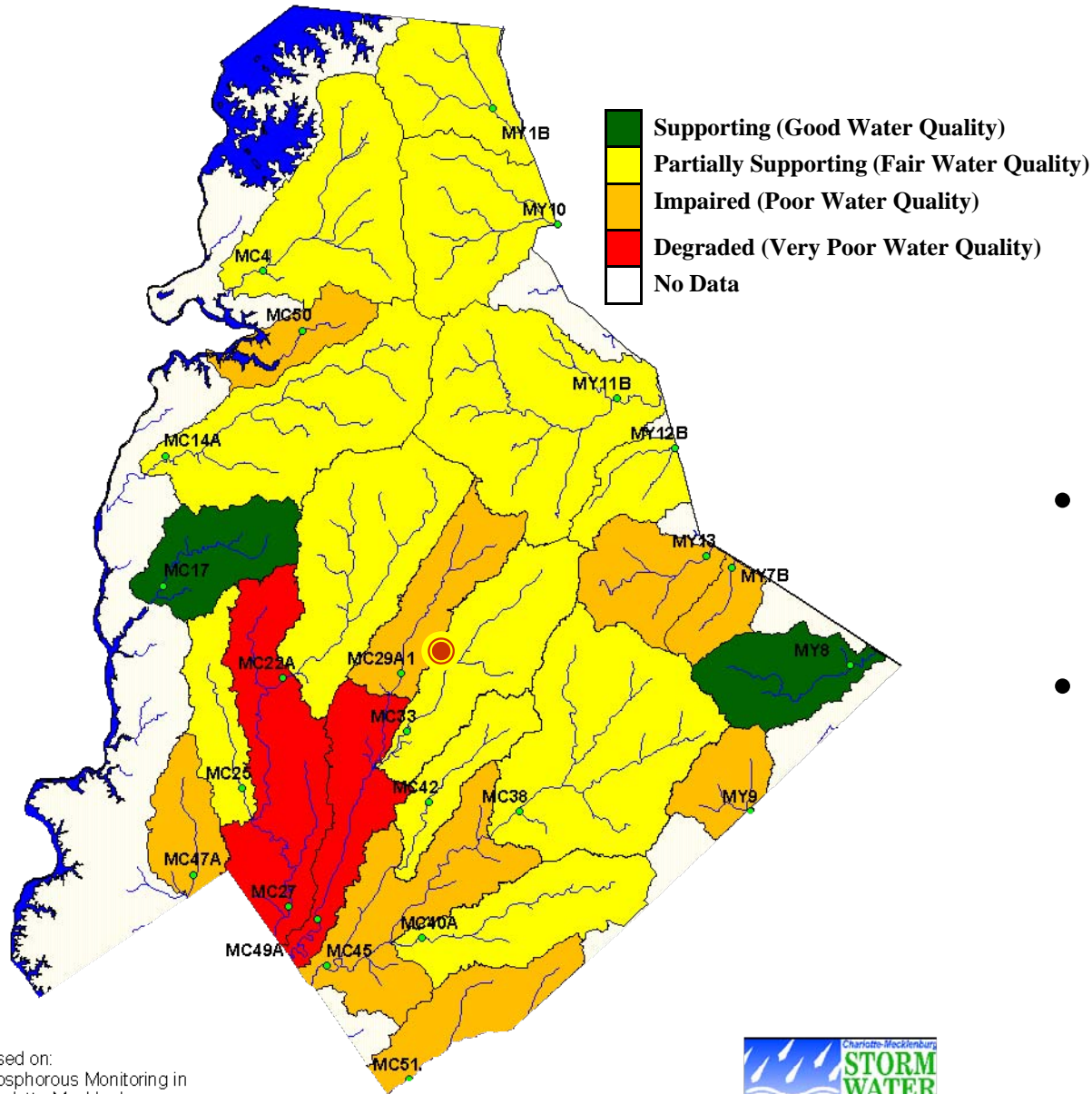
Water Quality
SUSI - Fecal Coliform Sub-Index
September 2009



Bacterial Contamination

- Above normal bacteria levels common.
- Primary sources are malfunctioning sewer systems, illegal discharges and storm water runoff.

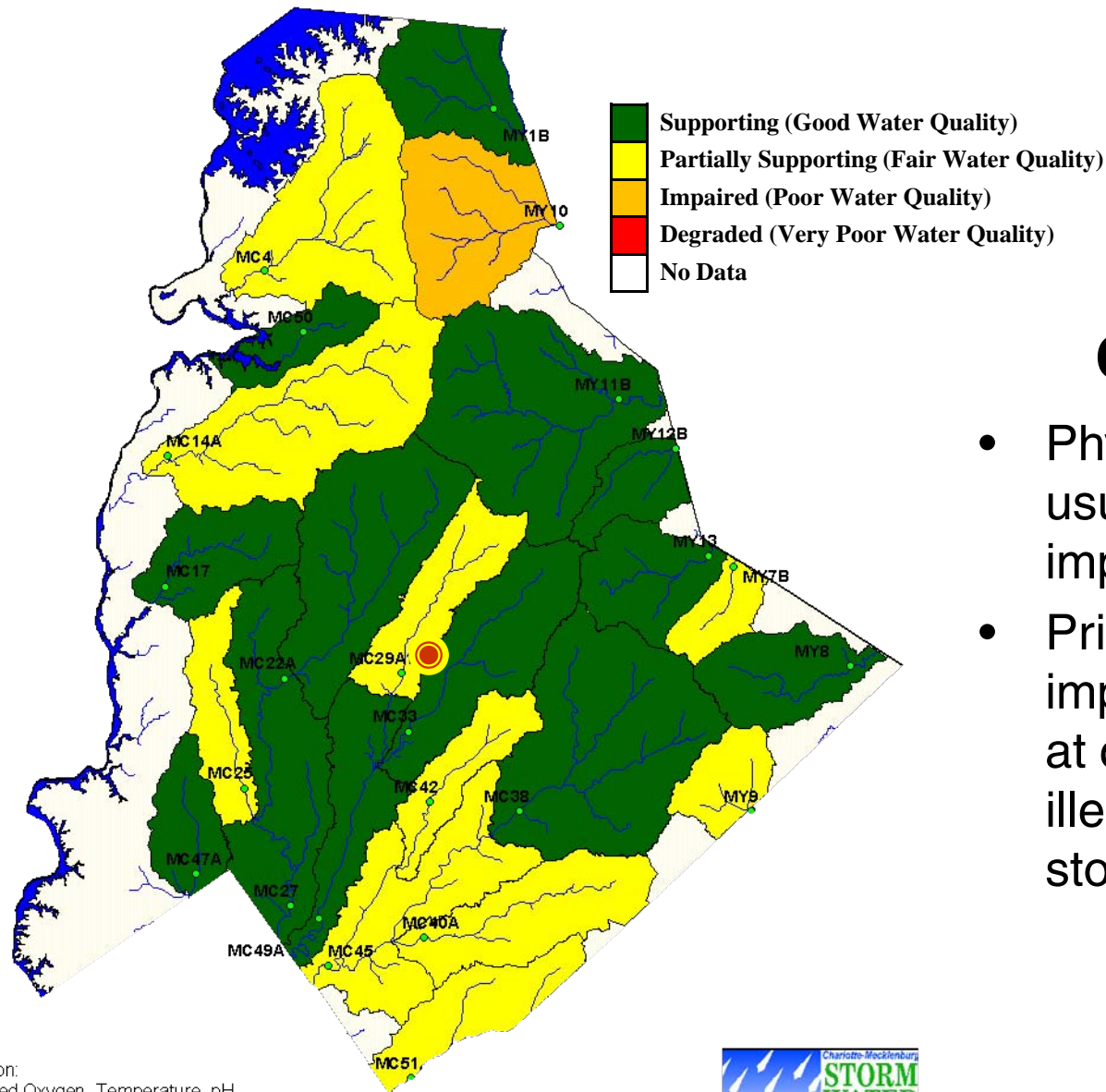
**Water Quality
SUSI - Phosphorous Sub-Index
September 2009**



Elevated Nutrient Levels

- Above normal nutrient levels common.
- Primary sources are lawns, illegal discharges and storm water runoff.

Water Quality
SUSI - Physical Parameters Sub-Index
September 2009



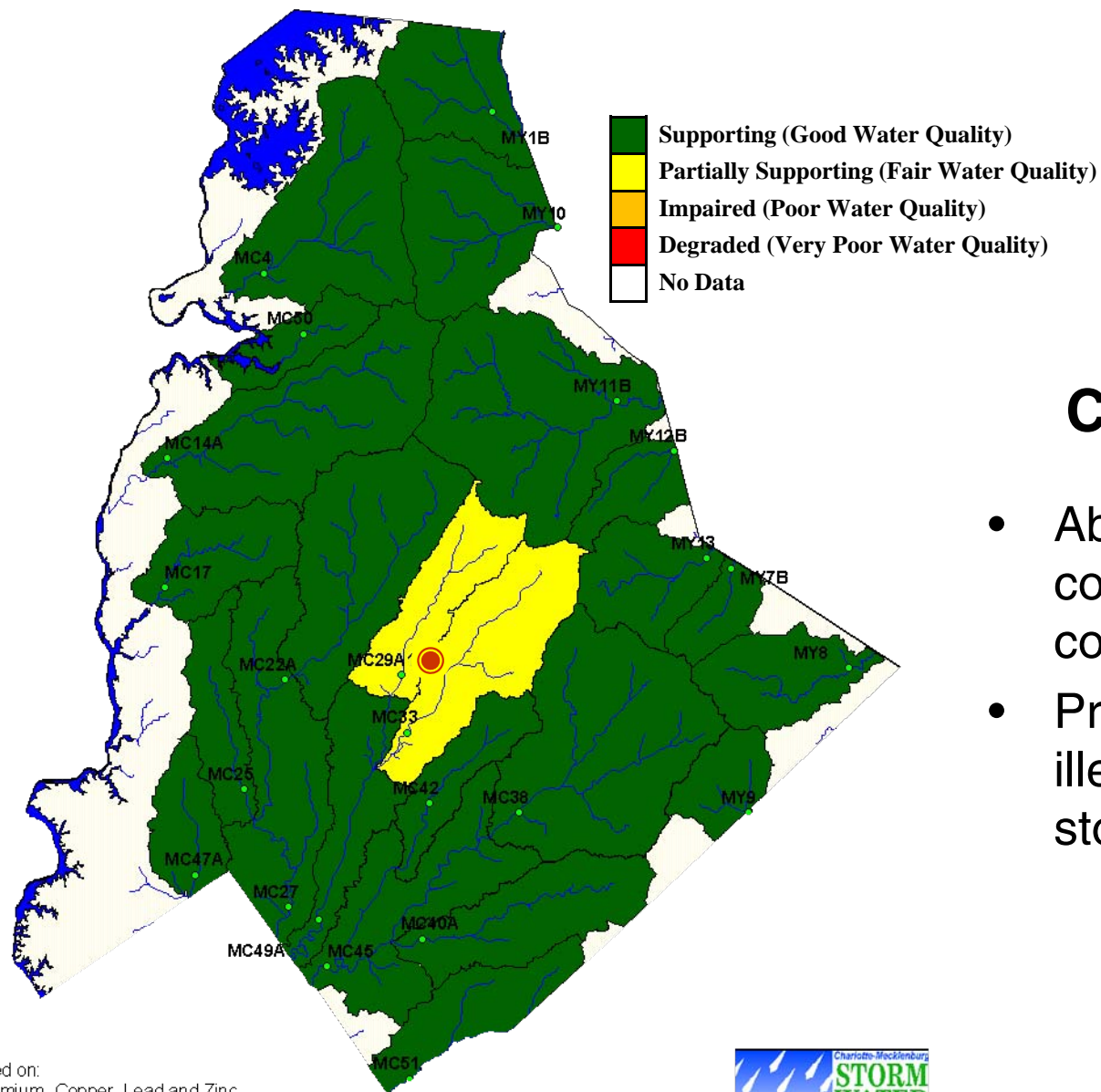
Physical Conditions

- Physical conditions usually indicate impairment.
- Primary sources are improper erosion control at construction sites, illegal discharges and storm water runoff.

Based on:
Dissolved Oxygen, Temperature, pH
and Turbidity Monitoring in Charlotte-Mecklenburg



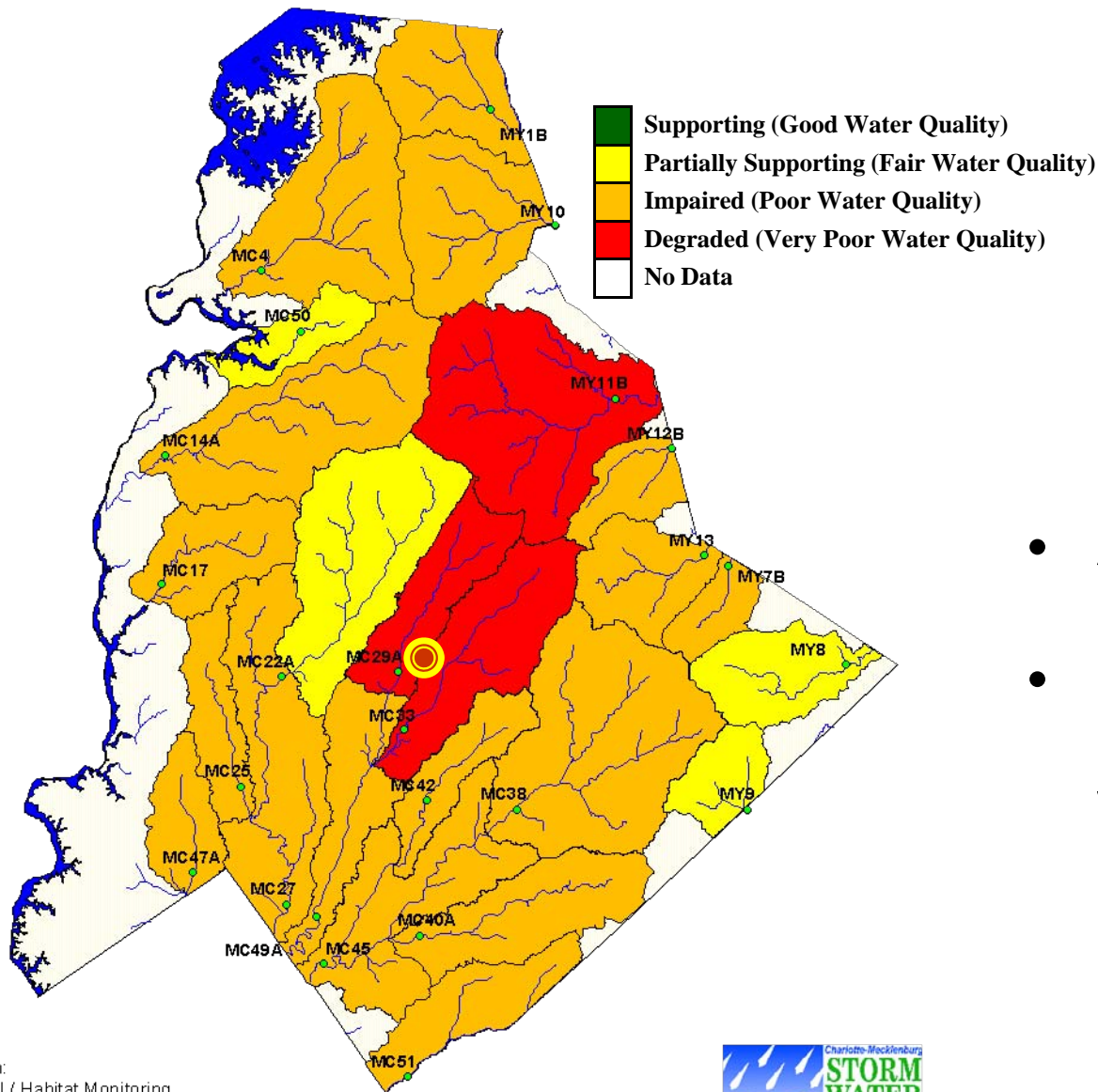
**Water Quality
SUSI - Metals Sub-Index
September 2009**



Metals Contamination

- Above normal metal concentrations common.
- Primary sources are illegal discharges and storm water runoff.

Water Quality SUSI - Bug-Habitat Sub-Index FY2009-2010



Aquatic Life

- Aquatic life present but minimal diversity.
- Primary source of impairment is storm water runoff.

What is Being Done to Protect These Waters

Structural BMPs Installed at New Developments



Collect runoff and remove pollutants.

MAY 31 2006

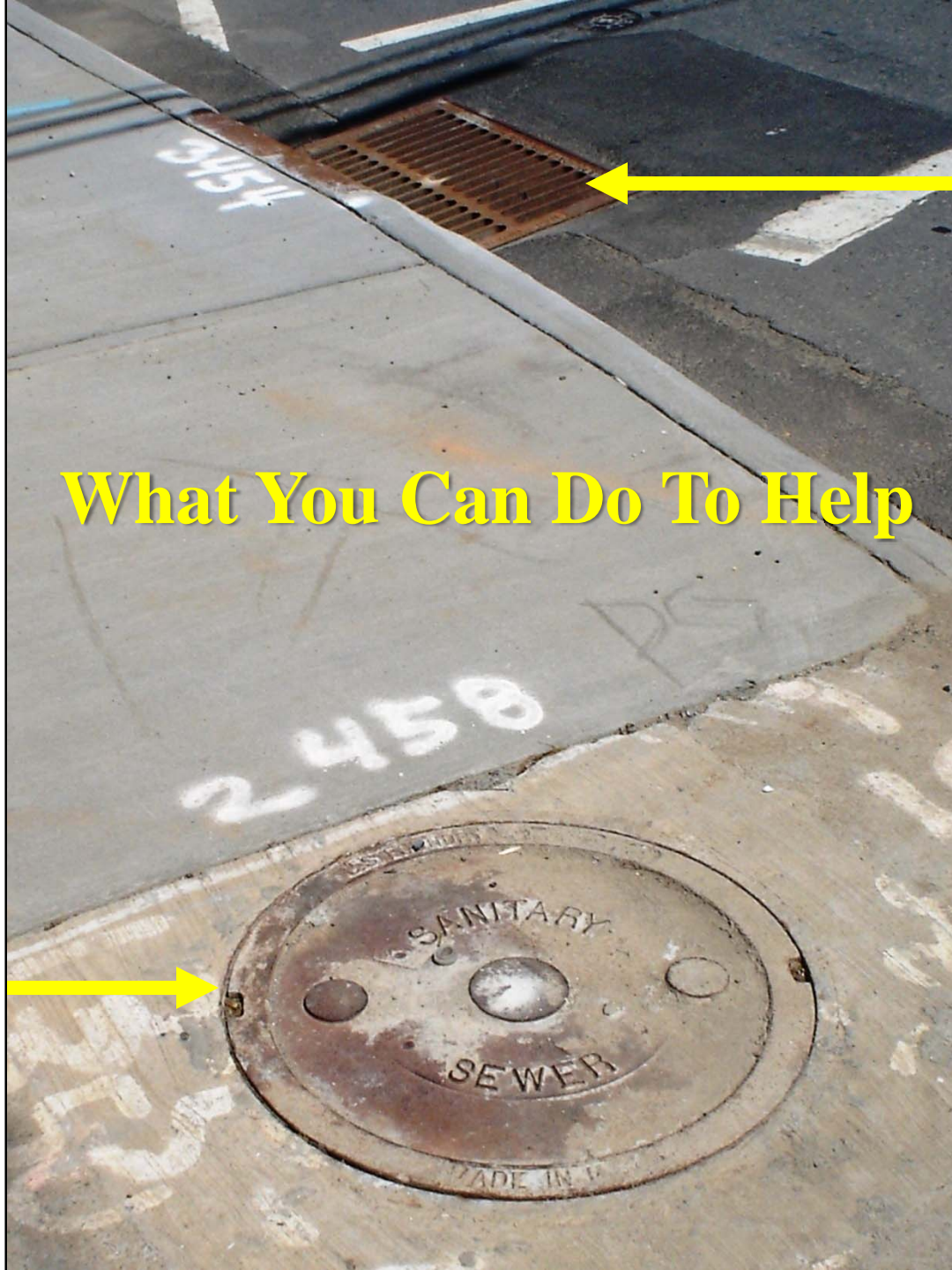
Find & Eliminate Pollution Sources



**Storm Sewer (only
carries rainwater)**

What You Can Do To Help

**Sanitary Sewer
(only carries
wastewater)**



A group of people, mostly wearing white t-shirts and waders, are wading through a shallow, brownish stream. They appear to be working on marking storm drains. The stream is bordered by a concrete curb on the left and a rocky bank on the right. Lush green trees and bushes line the background. The scene is outdoors on a sunny day.

Get Involved

Don't Pollute

Call 311

Storm Drain Marking

Water Watch



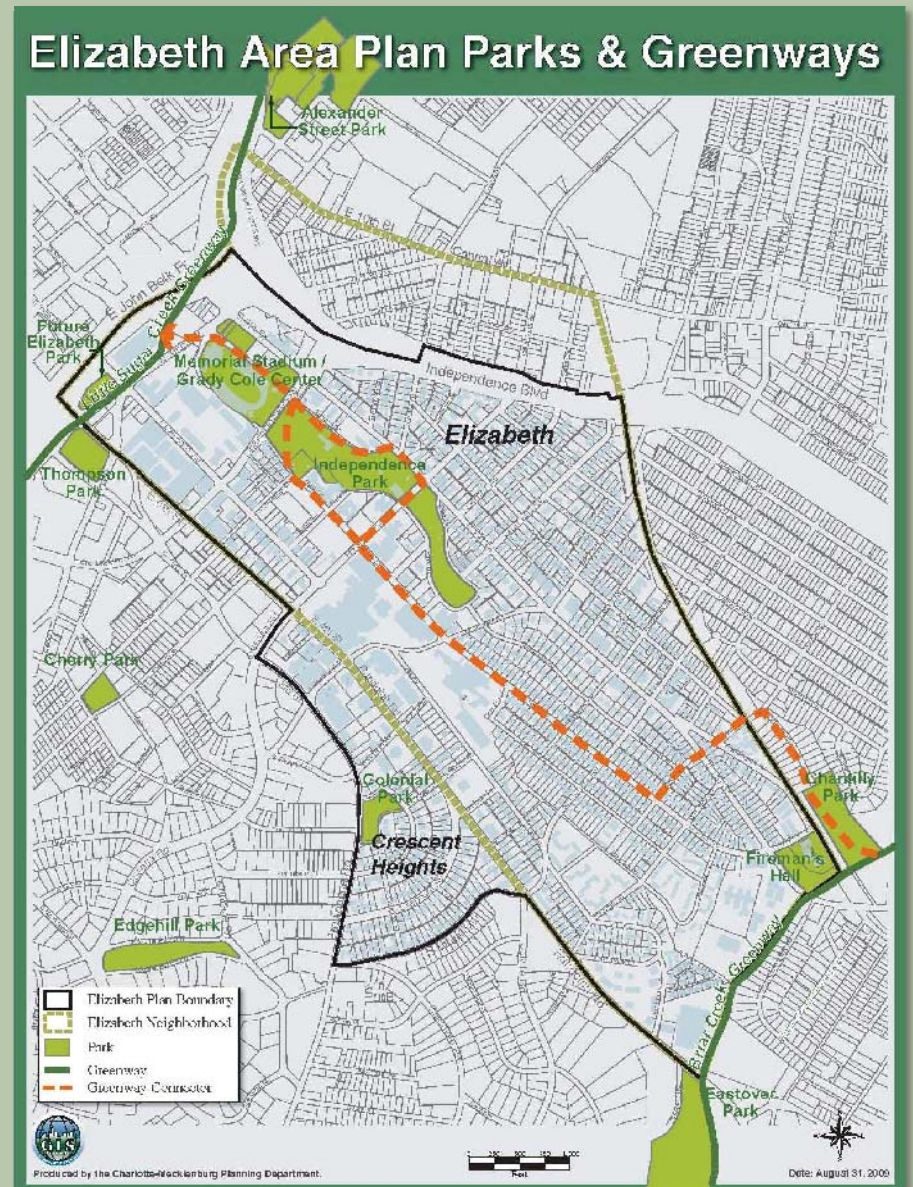
Rusty Rozzelle

704-336-5449

<http://stormwater.charmeck.org>

Parks and Open Space

- Uptown Parks Master Plan
- Parks and Facilities
- Greenways
- Park and Greenway Opportunities



January 6, 2010

Uptown Master Plan

- Assess Long Term Needs
- Recommendations for Future Park Locations
- Establish Design Guidelines
- Tied to the Center City 2020 Vision Plan



Uptown Master Plan

- **Assess Long Term Needs**

- National Park and Recreation Standards**

- 56 acres of park land
 - 6 Active Fields
 - 5,500 sqft. of Recreation Center
 - 2 Outdoor Pools

- **Recommendations for Future Park Locations**

- **Establish Design Guidelines**

- **Tied to the Center City 2020 Vision Plan**



Uptown Master Plan

- Assess Long Term Needs
- Recommendations for Future Park Locations

Green printing

- Priority to neighborhoods not served
 - Locate within easy walking distance
 - Need for More Active recreation
 - Close to public transportation
- Establish Design Guidelines
 - Tied to the Center City 2020 Vision Plan



Uptown Master Plan

- Assess Long Term Needs
- Recommendations for Future Park Locations
- Establish Design Guidelines
 - Balance active and passive uses
 - Plant native shade trees
 - Bound parks with perimeter roads
 - Provide on-street parking
 - Incorporate public art
- Tied to the Center City 2020 Vision Plan

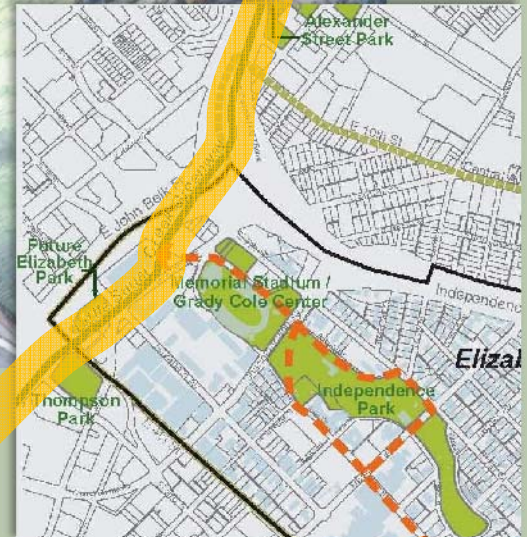


Uptown Master Plan

- Assess Long Term Needs
- Recommendations for Future Park Locations
- Establish Design Guidelines
- Tied to the Center City 2020 Vision Plan
 - Funding source
 - Needs teeth
 - Used by other agencies



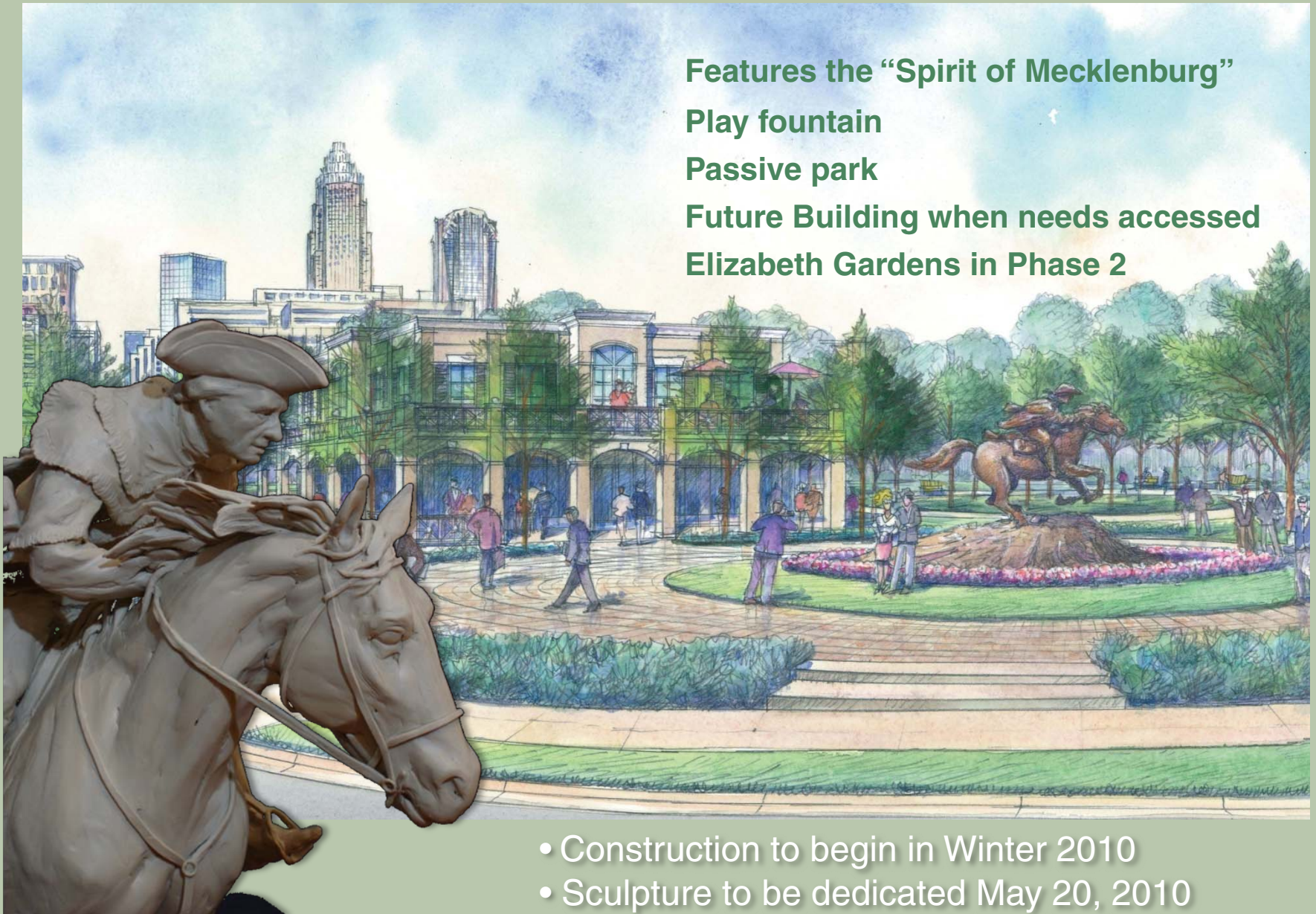
Little Sugar Creek Greenway



Charlottetowne Avenue to Morehead Street

- Opening to be celebrated in June 2010

Elizabeth Park



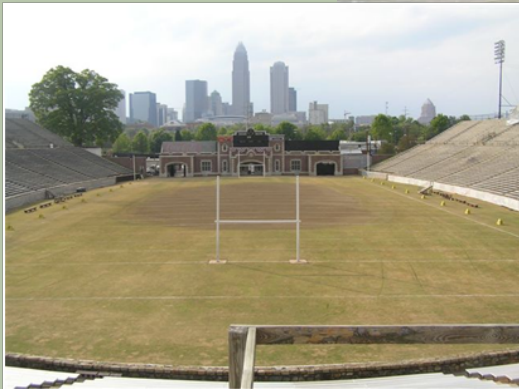
Features the “Spirit of Mecklenburg”
Play fountain
Passive park
Future Building when needs accessed
Elizabeth Gardens in Phase 2

- Construction to begin in Winter 2010
- Sculpture to be dedicated May 20, 2010

Memorial Stadium/ Grady Cole

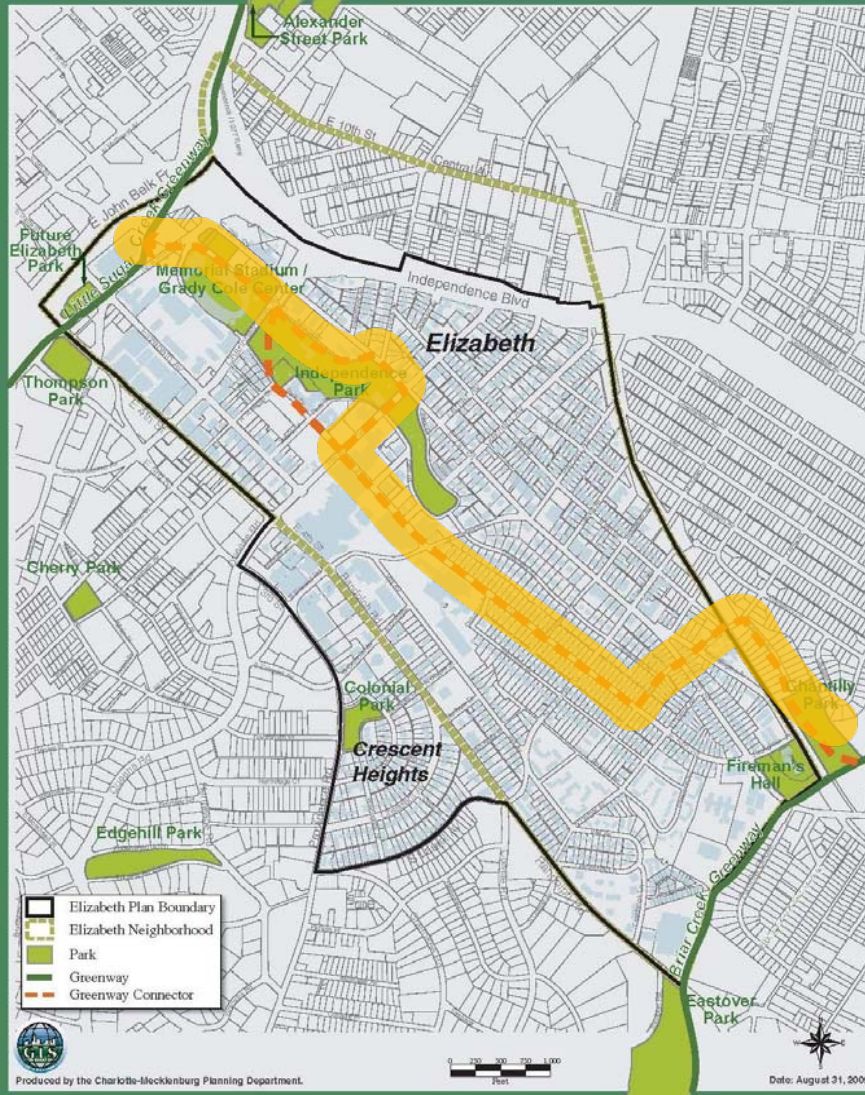


- Storm Water Repairs
- Grady Cole's Future
- Greenway Connection



Greenway Connector

Elizabeth Area Plan Parks & Greenways

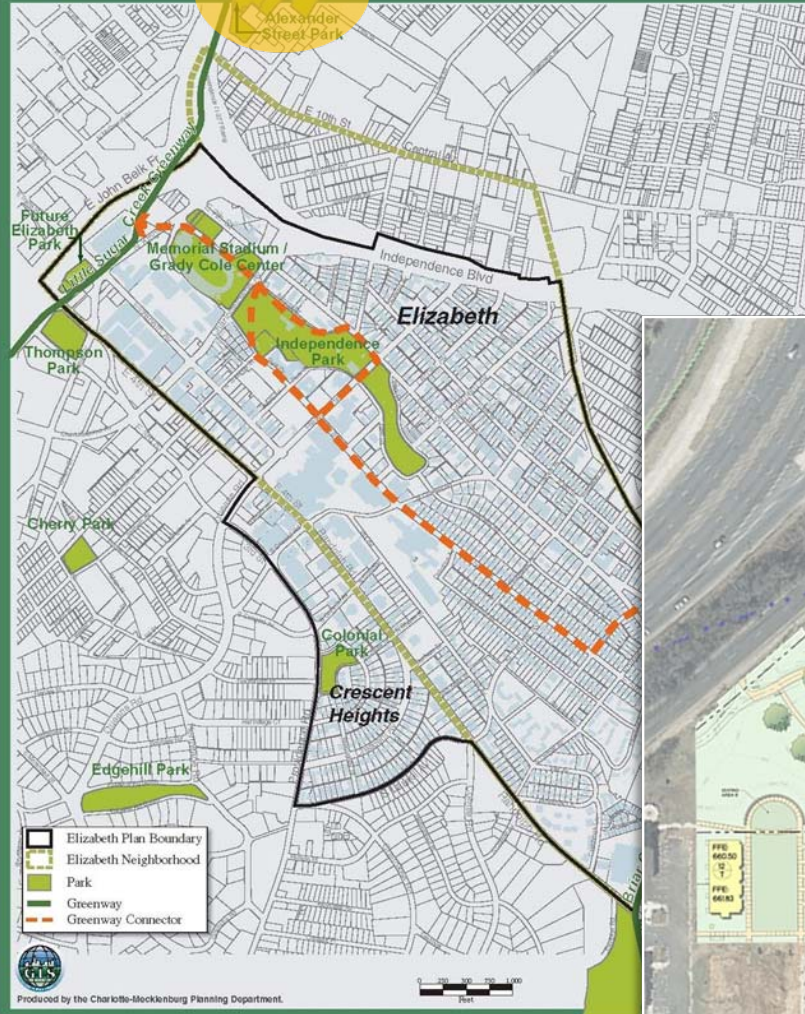


LandDesign.

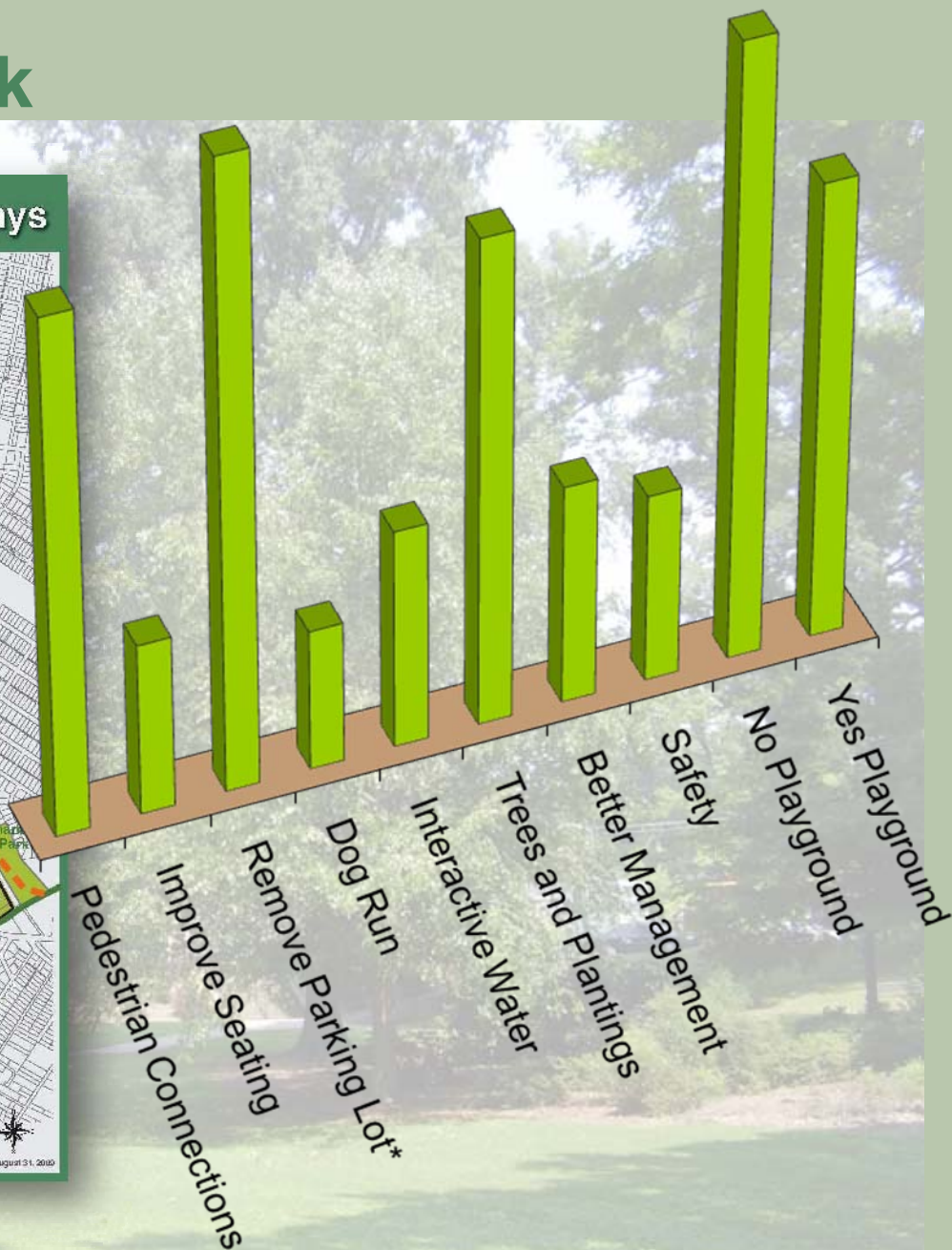
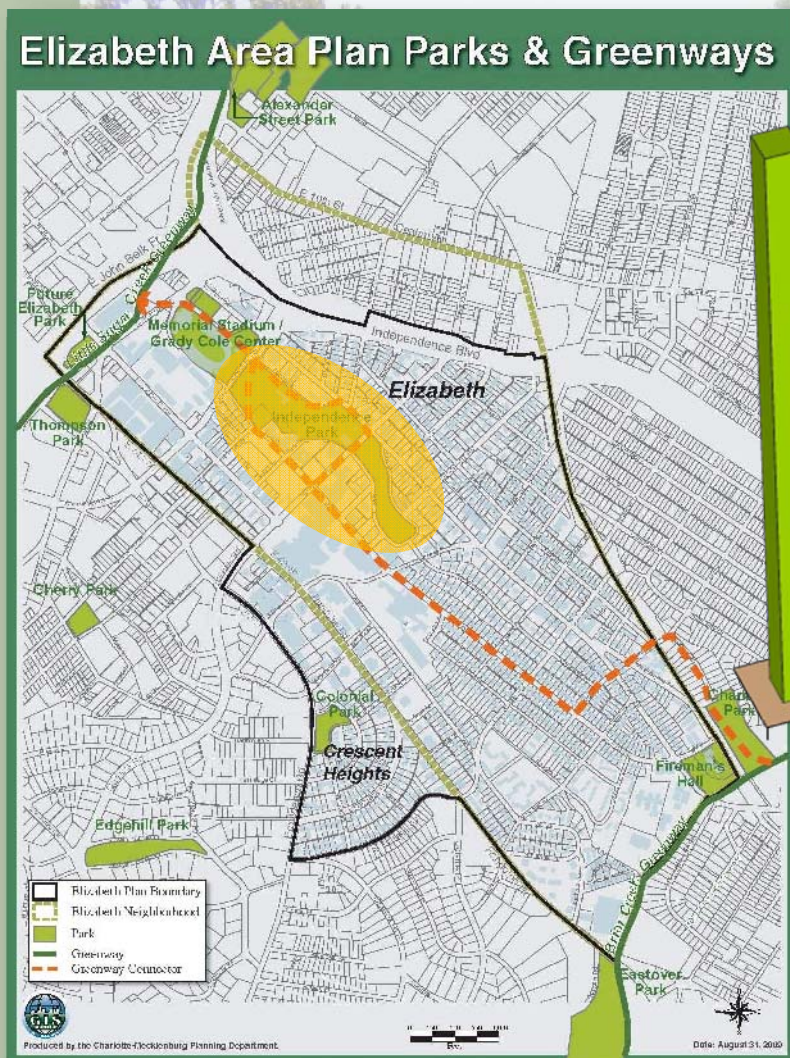
CPCC - CULINARY ARTS FACILITY
CHARLOTTE, NC

Alexander Street Park

Elizabeth Area Plan Parks & Greenways



Independence Park



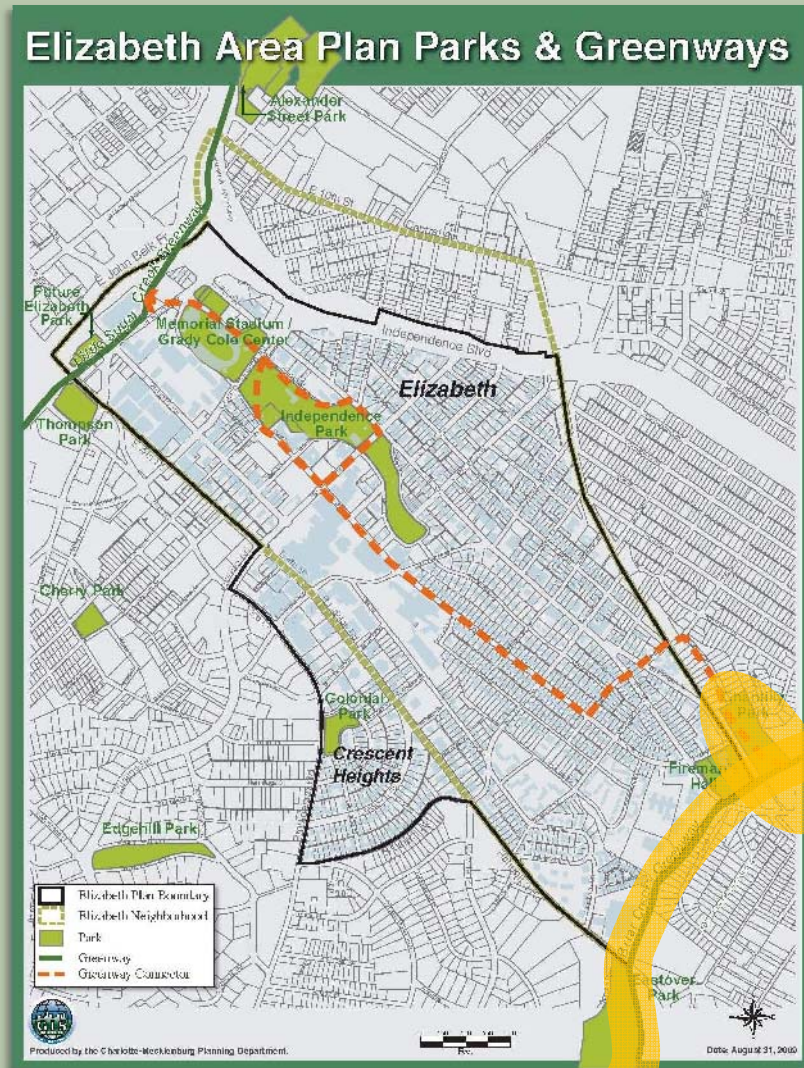
Independence Park



Independence Park



Briar Creek Greenway



- Design and Construction schedule varies beginning with sale of 2004 bonds

The site plan for the Cavalier Site shows a residential development layout. Key features include:

- CHANTILLY PARK**: Located to the west of the site, featuring a 'Tree Save Area' and a 'Shift Field'.
- CAVALIER SITE**: The main development area, showing a grid of lots and a proposed road network.
- Brar Creek**: A water feature running along the southern boundary of the site.
- Stormwater Input**: Indicated by a red arrow pointing to a specific location on the site.
- Retain Existing Crossing**: A label pointing to a crossing over Brar Creek.
- SEC 1B**: A boundary line running along the southern edge of the site.
- Adjacent Roads**: Loudoun Ave to the north and Washington Ave to the west.



Break Out:

Improvements?

Connections ?

Suggestions ?



Questions?

**Next CAG meeting:
February 3, 2010
At 5:30 p.m.**

