



CHARLOTTE
CHARLOTTE-MECKLENBURG
PLANNING

Catawba Area Plan Advisory Group

Meeting #4
Natural Environment , Part II
September 30, 2008

Welcome and Introductions

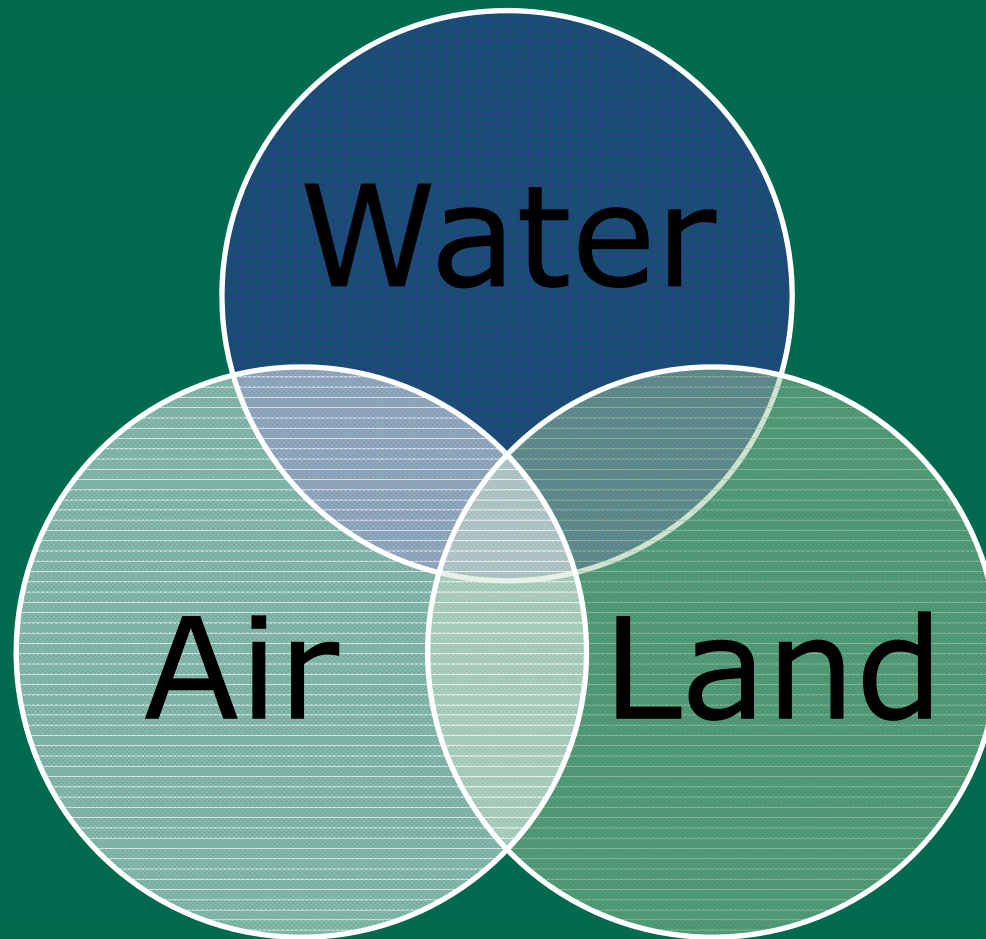
- Housekeeping
- Review Handouts





CITY OF CHARLOTTE

Natural Environment





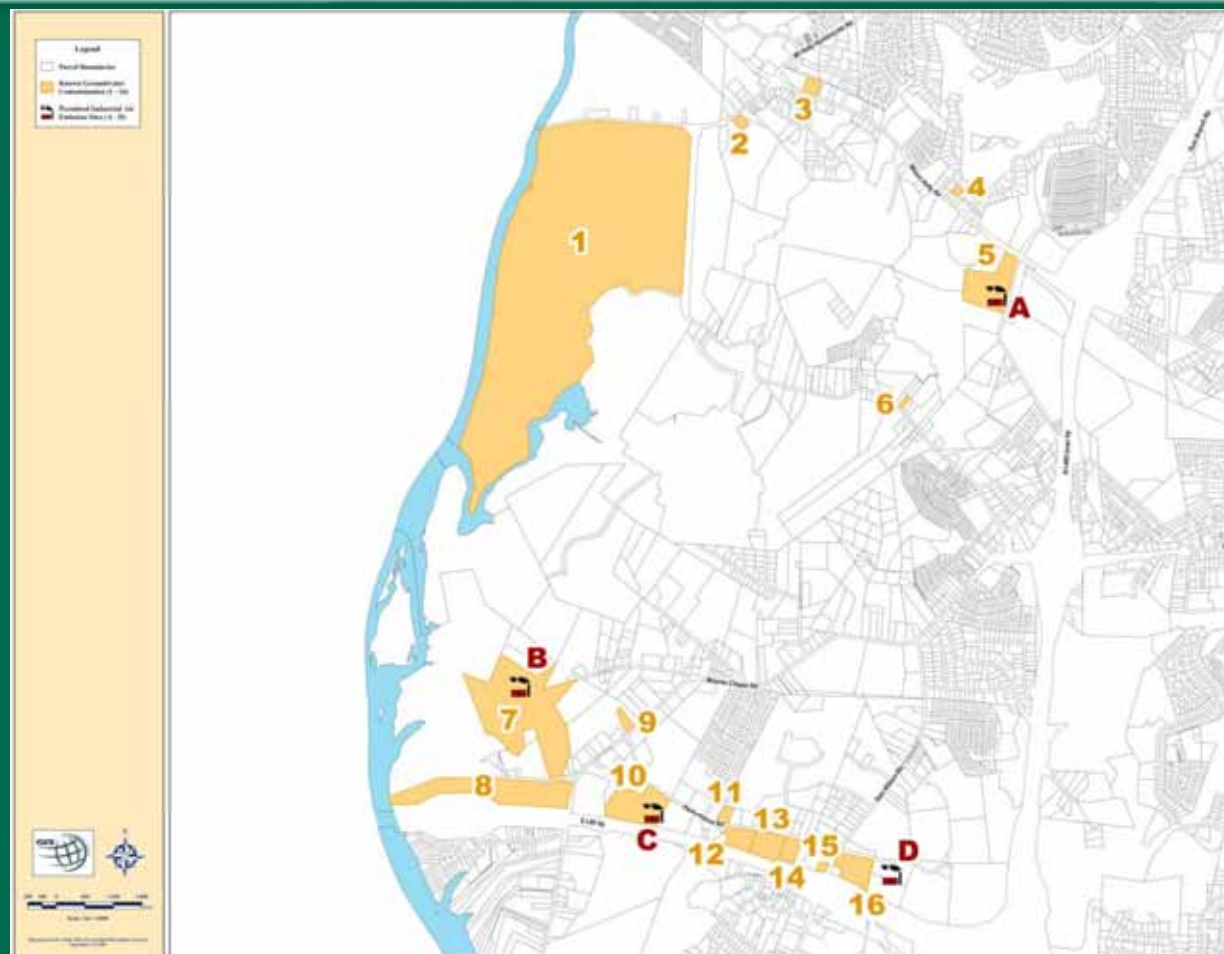
CITY OF CHARLOTTE

LAND QUALITY



CHARMECK.ORG

GW Sites	Label
CLARIANT CORPORATION-MT. HOLLY PLANT	1
CONNELL PROPERTY	2
TEXTILE CLEANER & TRACK SERVICE	3
MORRISON PROPERTY	4
LIVINGSTONE COATING CORPORATION	5
JAMES HENDRIX	6
STIFFORD FERRY ROAD/PLANTATION PIPELINE	7
AMERICAN TRUETZSCHLER	8
JOY, DENNIS	9
REYNOLDS & REYNOLDS	10
KMAC	11
RAMSEY PRODUCTS	12
TEKMATEX, INC	13
WJZY TV46/TV55	14
TEXACO-SAM WILSON RD	15
SAM WILSON ROAD TANKER SPILL	16



AQ Sites	Label
Livingstone Coating Corporation	A
Plantation Pipeline Company	B
Relizon Company, The	C
Barrday Corporation	D



CITY OF CHARLOTTE

AIR QUALITY

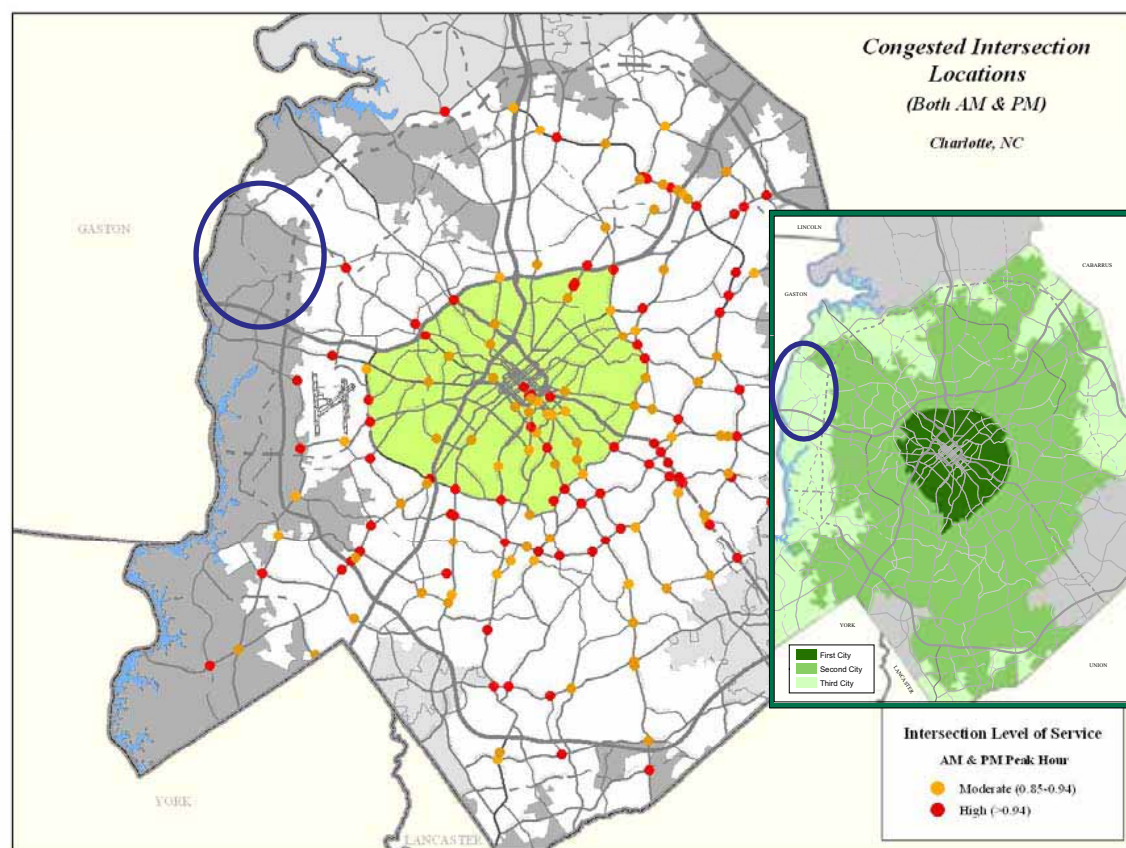
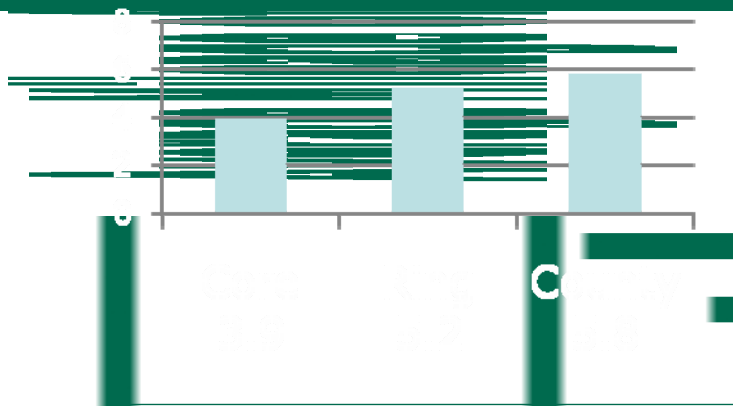


CHARMECK.ORG

"Tale of 3 Cities"

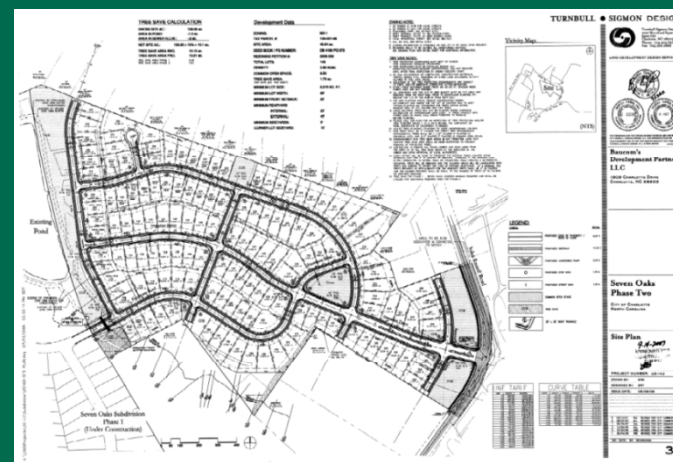
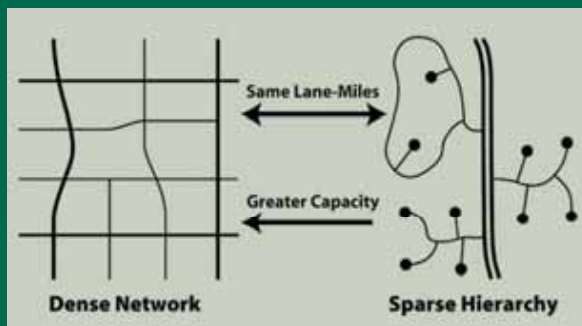
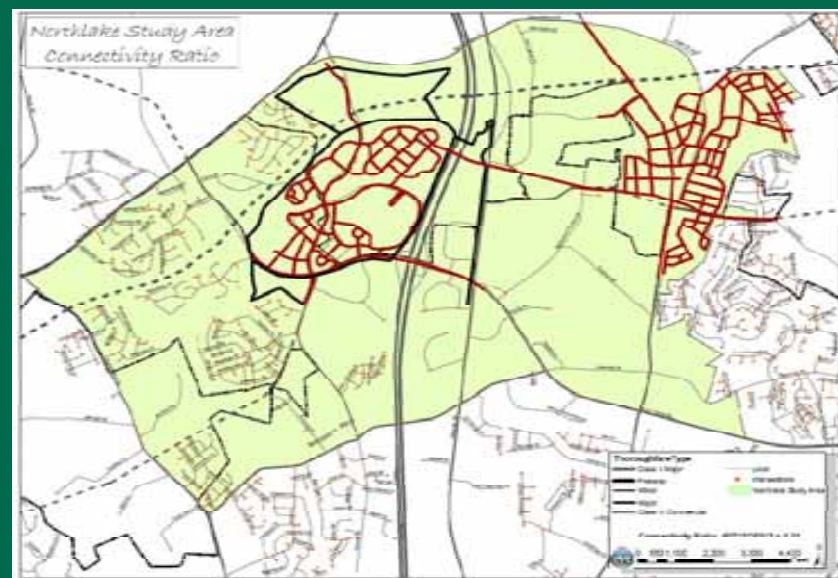
- Urban Center
- Suburban Ring
- Exurban Edges

Average Mileage of Non-Work Trips



Importance of Connectivity

- Travel choices and route options
- Reduces vehicle miles of travel (VMT)
- Reduces need to widen intersections and thoroughfares
- Block structure friendly to walking, cycling and transit





CITY OF CHARLOTTE

PARKS AND RECREATION

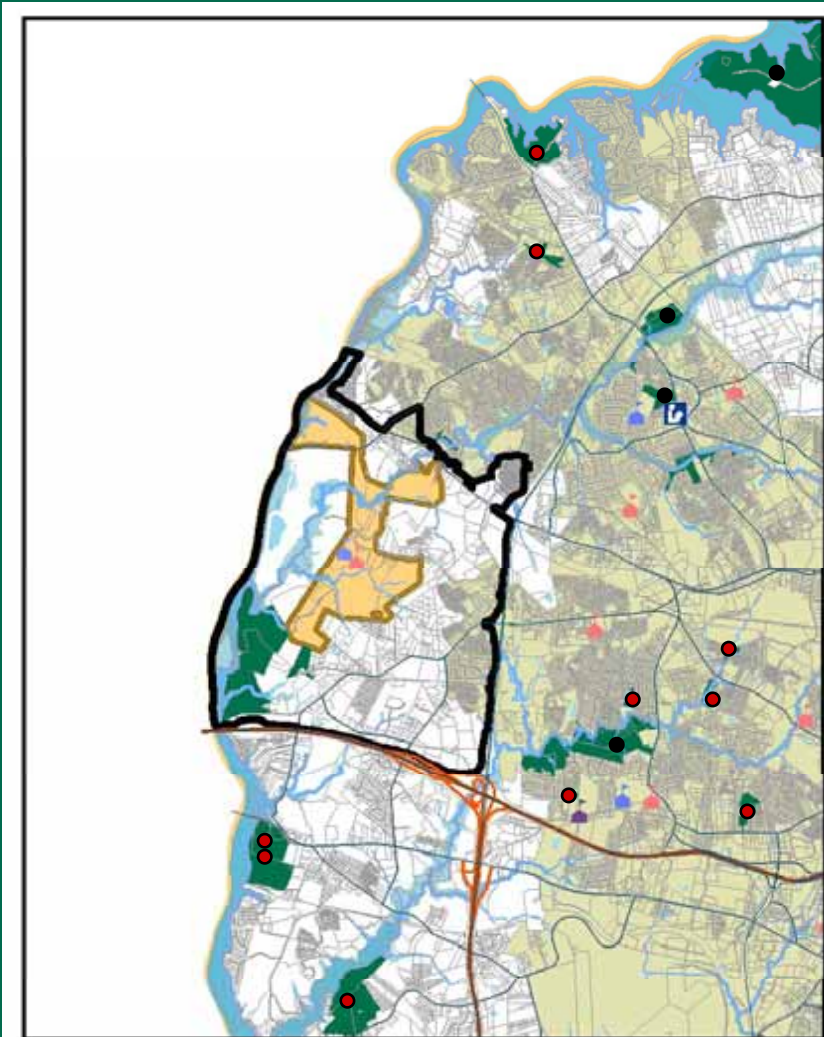


CHARMECK.ORG

PARK CLASSIFICATIONS

- **Regional Park** – Minimum 100 acres in size serving a broad geographic region. Driving distance for citizens should be no more than 20 minutes. Shall serve a population standard of five (5) acres per 1000 persons. Amenities could include active and passive recreation opportunities. They can support athletic tournaments and sportsplexes for a variety of competitive athletics including basketball, baseball, soccer, tennis, etc., and can also support passive recreation amenities such as playgrounds, shelters and trails.
- **Community Park** – 20-100 acres in size serving more localized areas in the County. Driving distance for citizens should be no more than 15 minutes, and they should serve a population standard of four (4) acres per 1000 persons. Amenities could include active and passive recreation, but will not be developed to the extent of a regional park.
- **Neighborhood Park** – 2-20 acres in size serving immediately adjacent, local neighborhoods. Citizens should have direct access to these parks, and should be able to walk or bike to them. They shall serve a population standard of three (3) acres per 1000 persons. Typically, no parking or restrooms are allowed at a neighborhood park. Amenities could include playgrounds, shelters, trails, and smaller athletic fields.

Parks and Recreation



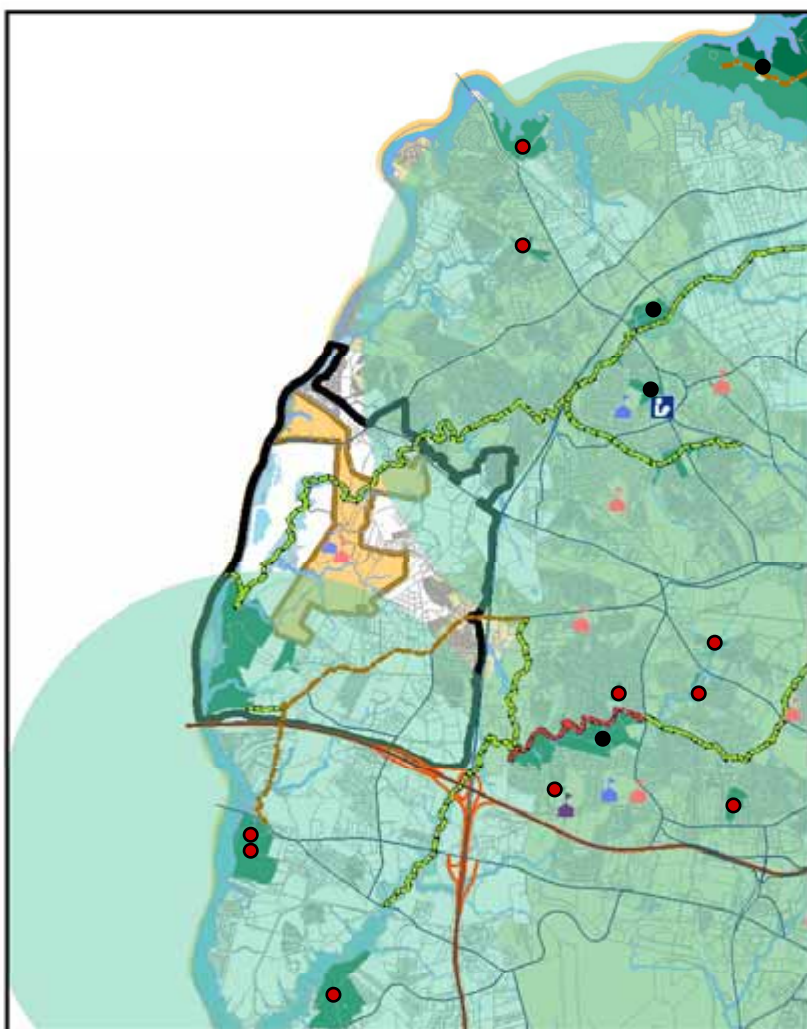
NATURE PRESERVES

1. *Latta Plantation*
2. *Haymarket*
3. *Shuffletown Prarie*
4. *Gateway*
5. *Berryhill*

PARKS

1. *Historic Tuckaseegee Ford Park (Regional)*
2. *Shuffletown (Community)*
3. *Coulwood (Community)*
4. *Robert L. Smith (Community)*
5. *Gateway (Community)*
6. *Marimac Rd. (Community)*
7. *West Meck (Neighborhood)*
8. *Teddington (Neighborhood)*
9. *Eagles Landing (Neighborhood)*
10. *Crossridge Rd. (Neighborhood)*

Parks and Recreation



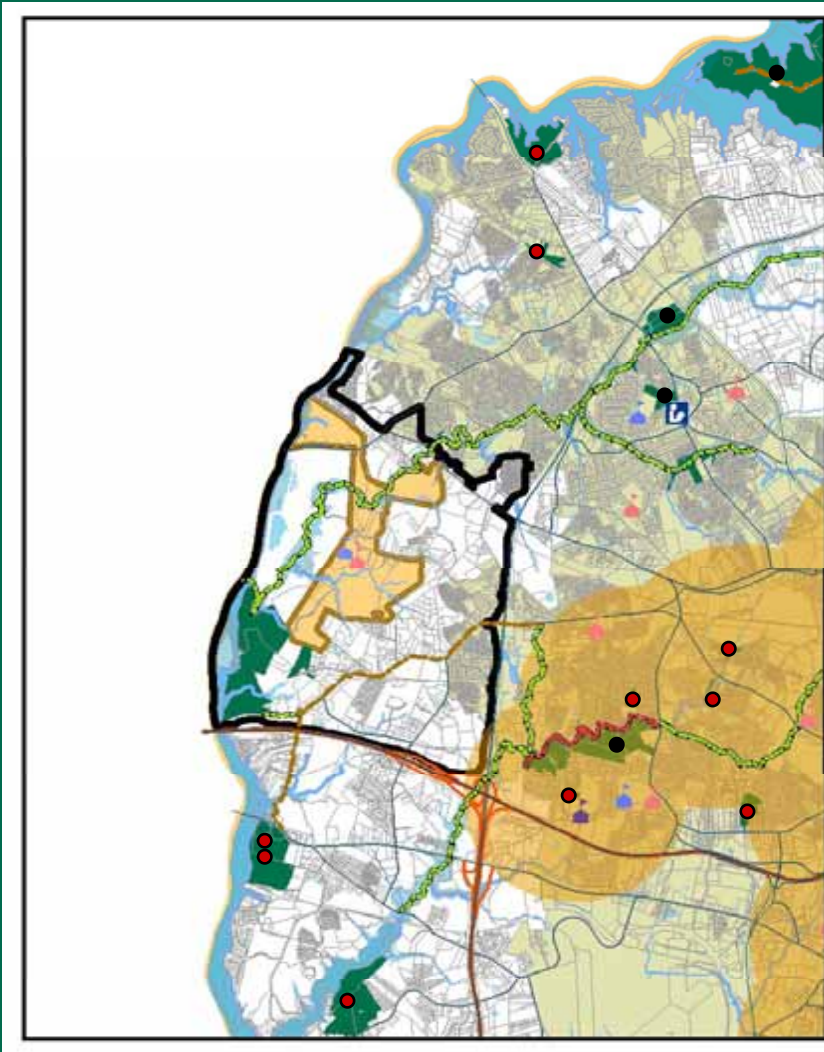
NATURE PRESERVES

1. *Latta Plantation*
2. *Haymarket*
3. *Shuffletown Prarie*
4. *Gateway*
5. *Berryhill*

PARKS

1. *Shuffletown (Community)*
2. *Coulwood (Community)*
3. *Robert L. Smith (Community)*
4. *Gateway (Community)*
5. *Marimac Rd. (Community)*
6. *West Meck (Neighborhood)*
7. *Teddington (Neighborhood)*
8. *Eagles Landing (Neighborhood)*
9. *Crossridge Rd. (Neighborhood)*

Parks and Recreation



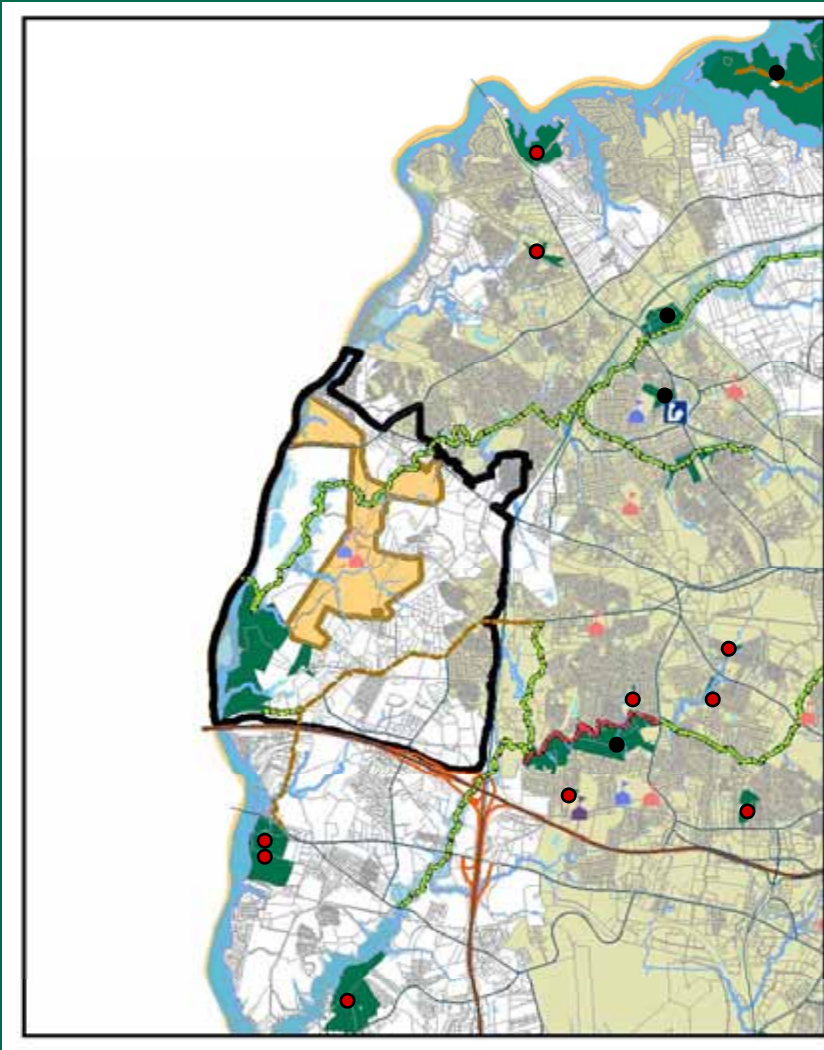
NATURE PRESERVES

1. *Latta Plantation*
2. *Haymarket*
3. *Shuffletown Prarie*
4. *Gateway*
5. *Berryhill*

PARKS

1. *Shuffletown (Community)*
2. *Coulwood (Community)*
3. *Robert L. Smith (Community)*
4. *Gateway (Community)*
5. *Marimac Rd. (Community)*
6. *West Meck (Neighborhood)*
7. *Teddington (Neighborhood)*
8. *Eagles Landing (Neighborhood)*
9. *Crossridge Rd. (Neighborhood)*

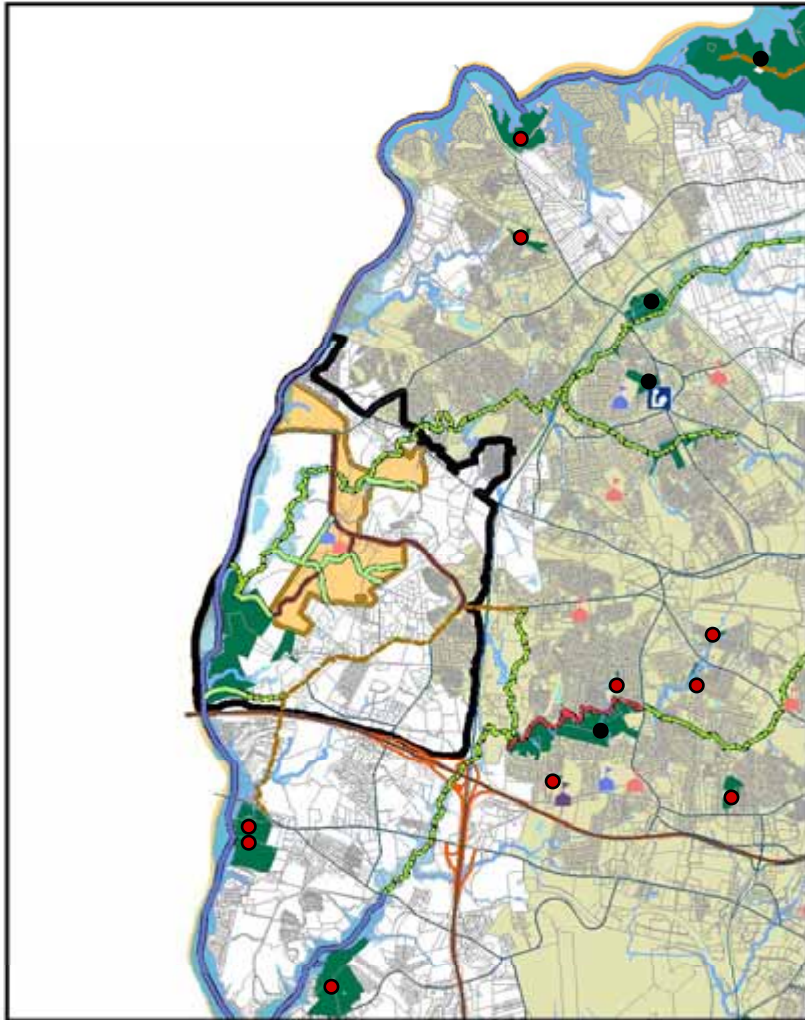
Parks and Recreation



GREENWAYS

1. *Long Creek (Carolina Thread Trail)*
2. *Gum Branch*
3. *Paw Creek*
4. *Lakewood Connection*

Parks and Recreation



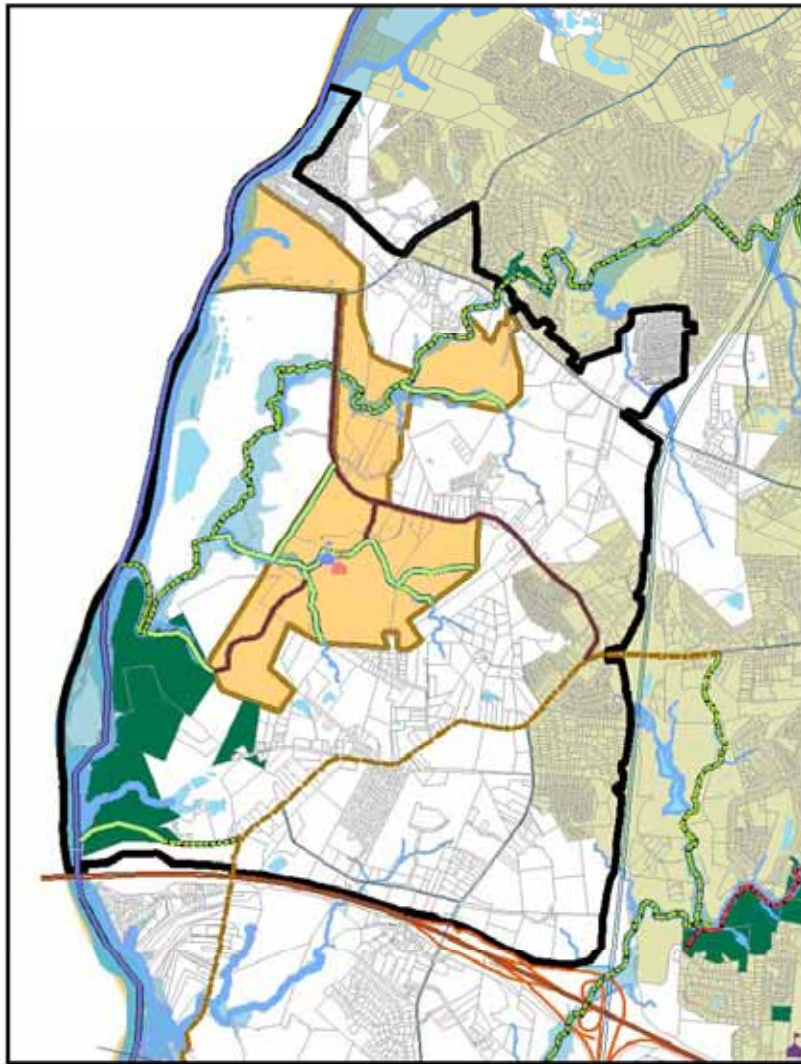
GREENWAYS

1. *Long Creek (Carolina Thread Trail)*
2. *Gum Branch*
3. *Paw Creek*
4. *Lakewood Connection*

OTHER GW OPPORTUNITIES

1. *Crosland Development*
2. *Mountain Island Lake/Catawba River/Paw Creek Blueway*

Parks and Recreation



CWAP Goals and Priorities

1. *Acquire land along long creek and for the Carolina Thread Trail*
2. *Identify larger areas for potential preservation*
3. *Identify land to acquire for Community and Neighborhood Park opportunities*
4. *Work with the Crosland developer to ensure that open space, floodplain protection and trails are included in their plans*
5. *Work with CMUD, Clariant and Duke Energy to determine best routing for greenway, bridge over Catawba, and where land can be preserved for the thread trail*
6. *Work with CMS to provide a pedestrian connection to new school sites*
7. *Work with CDOT to install pedestrian routes along Belmeade and Moores Chapel*



CITY OF CHARLOTTE

Parks and Recreation

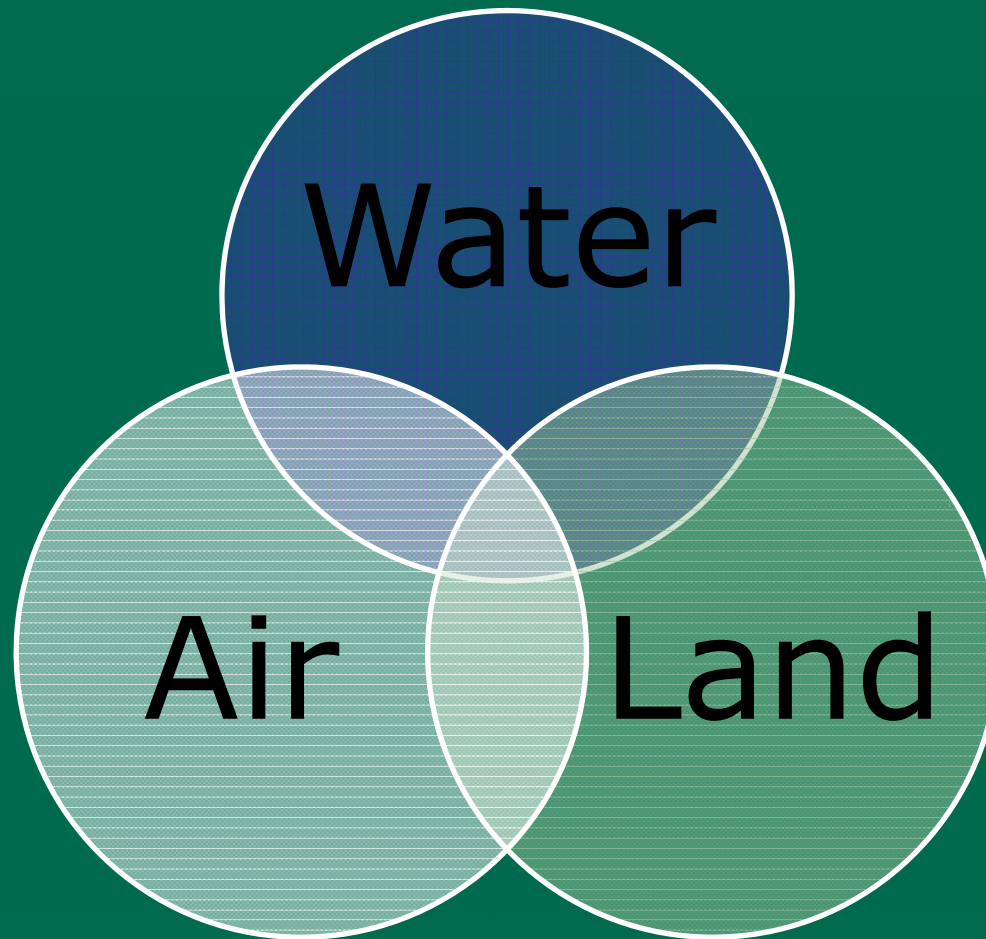
WWW.PARKANDREC.COM

CHARMECK.ORG



CITY OF CHARLOTTE

Natural Environment





Natural Environment Goals and Policies

Below is a list of the opportunities and issues for the natural environment identified by the public and refined by the Catawba Area Plan Citizen Advisory Group.

Opportunities

- Protect remaining open space and tree cover.
- Allow environmental impacts to determine future planning decisions.

Issues

- Loss of natural areas, wildlife habitat and tree cover.

Draft Vision Statement

The following draft vision statement was created by the Advisory Group on September 4, 2008.

The Catawba River Area should have a central focus on the river itself and the maximization of its enjoyment for the benefit of the community. Proper integration of all uses within the area shall create a sustainable community for all ages known for its:

- High quality design reflective of the area's river and recreational characteristics;
- *Natural resources protected with innovative and environmentally sensitive development practices such as preservation of mature trees, open space and greenways integrated within neighborhoods.*
- Enhanced public facilities and services;
- Mixture of housing types and neighborhood-serving land uses;
- Safe and well-connected transportation network that provides options for pedestrians, cyclists, motorists and transit users;
- Viable employment centers integrated in appropriate locations.

Natural Environment Policies

The natural environment policies which follow provide direction to accommodate growth and change while protecting the quality of our water, land and air.

Goal: Protect the quality of the area's water supply.

Water Quality

1. Identify environmentally sensitive areas such as watershed areas, significant wetlands, streams, tree canopy and topography and address how they will be protected and/or mitigated.
2. Use innovative, state-of-the-art practices to collect, treat and disperse storm water run-off such as Low Impact Design (LID).
3. Encourage development practices that minimize clearing, grading and soil compaction so that impacts to the environment are minimized.

Goal: Encourage environmentally sensitive land development practices.

Land Quality

1. Preserve the tree canopy, native plants and open space where feasible. Incorporate natural features into development proposals.
2. Expand the Long Creek Greenway and passive open space.

Goal: Support developments that minimize the use of single-occupancy vehicles and help reduce vehicular trips.

Air Quality

1. Encourage high quality, mixed-use developments that promote pedestrian circulation to and through the site and support bicycling and short vehicular trips.
2. Provide transit service options when and where practical.
3. Install sidewalks to connect residents to neighborhood-serving land uses.



CITY OF CHARLOTTE

Questions?



CHARMECK.ORG



CITY OF CHARLOTTE

Thank You!

Our next meeting will be
Tuesday, **October 7, 2008**. The
topic will be *land use* and
transportation.

CHARMECK.ORG