



**CHARLOTTE**  
CHARLOTTE-MECKLENBURG  
PLANNING

# Catawba Area Plan Citizen Advisory Group

Meeting #2

September 4, 2008

[CHARMECK.ORG](http://CHARMECK.ORG)



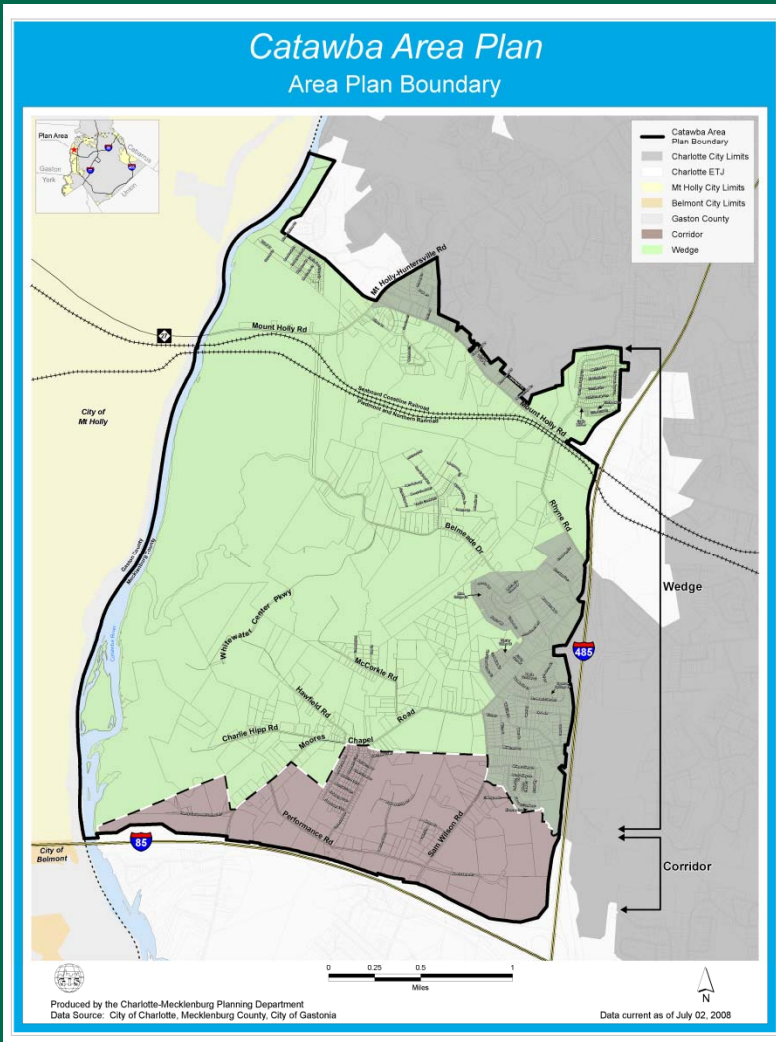
CITY OF CHARLOTTE

- Welcome and Introductions



CITY OF CHARLOTTE

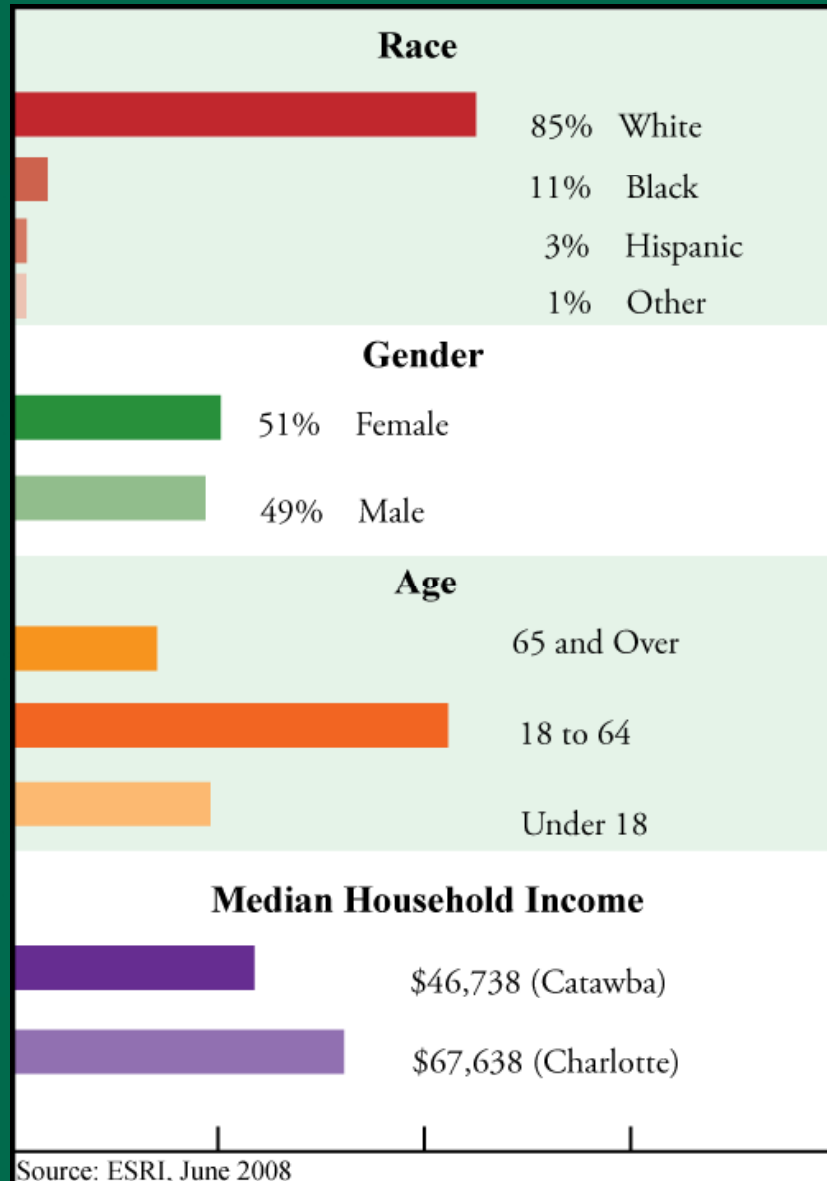
## Existing Conditions



**Who** lives in the Catawba Community?

**What** is in the Community?

**How** do we shape the future?



- **Population: 3,295 (2008)**
  - 1,491 (2000)
  - 121% increase
- **Neighborhoods:**
  - Wildwood
  - Wilson Glen
  - Belmeade Green
  - Charlie Hipps Road



- Approx. 4,800 acres
- 53% vacant land
- 9 Planned projects
- Major Land Uses/Zoning
  - Residential
  - Industrial
  - Parks and Open Space





CITY OF CHARLOTTE

## Existing Conditions: Transportation



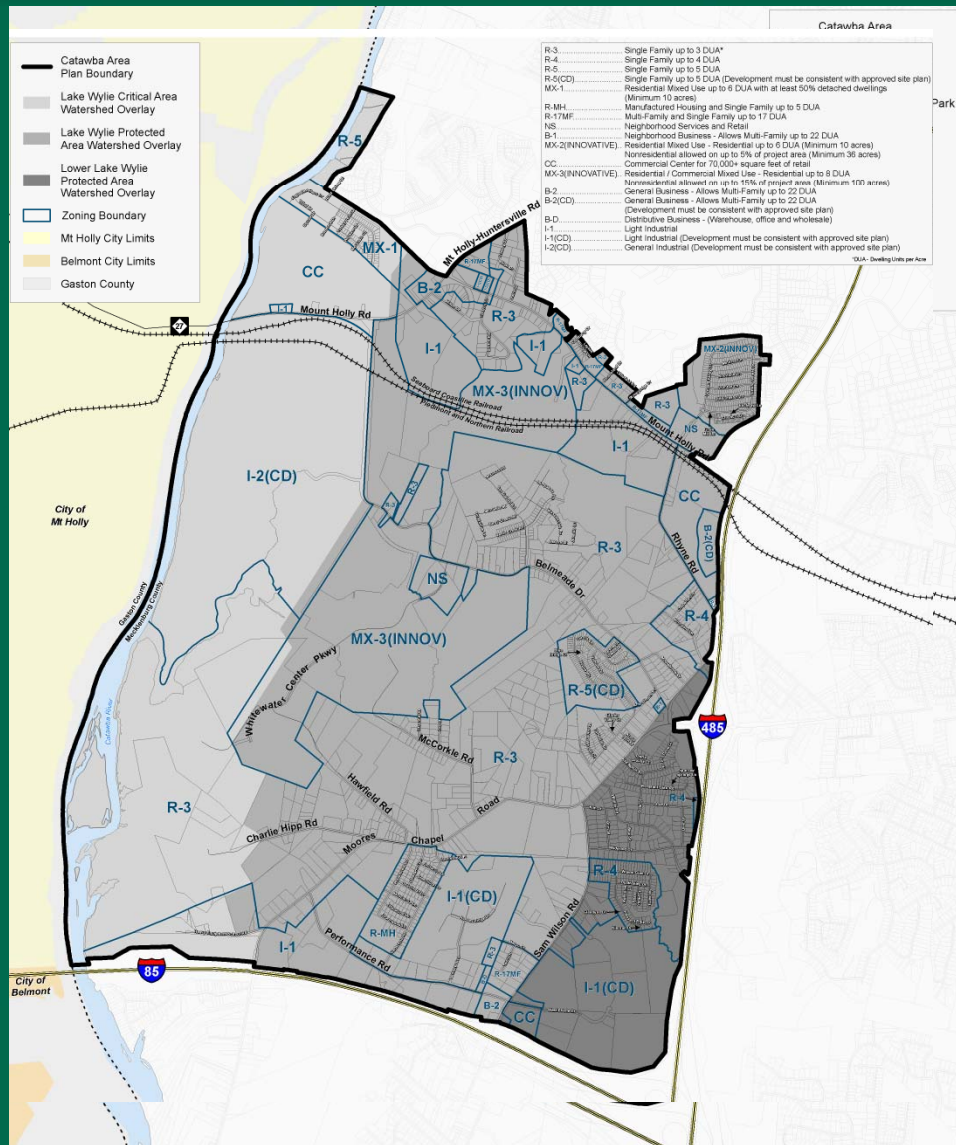
- Farm-to-Market Streets
- Limited Pedestrian and Bicycle Facilities
- Few transit options



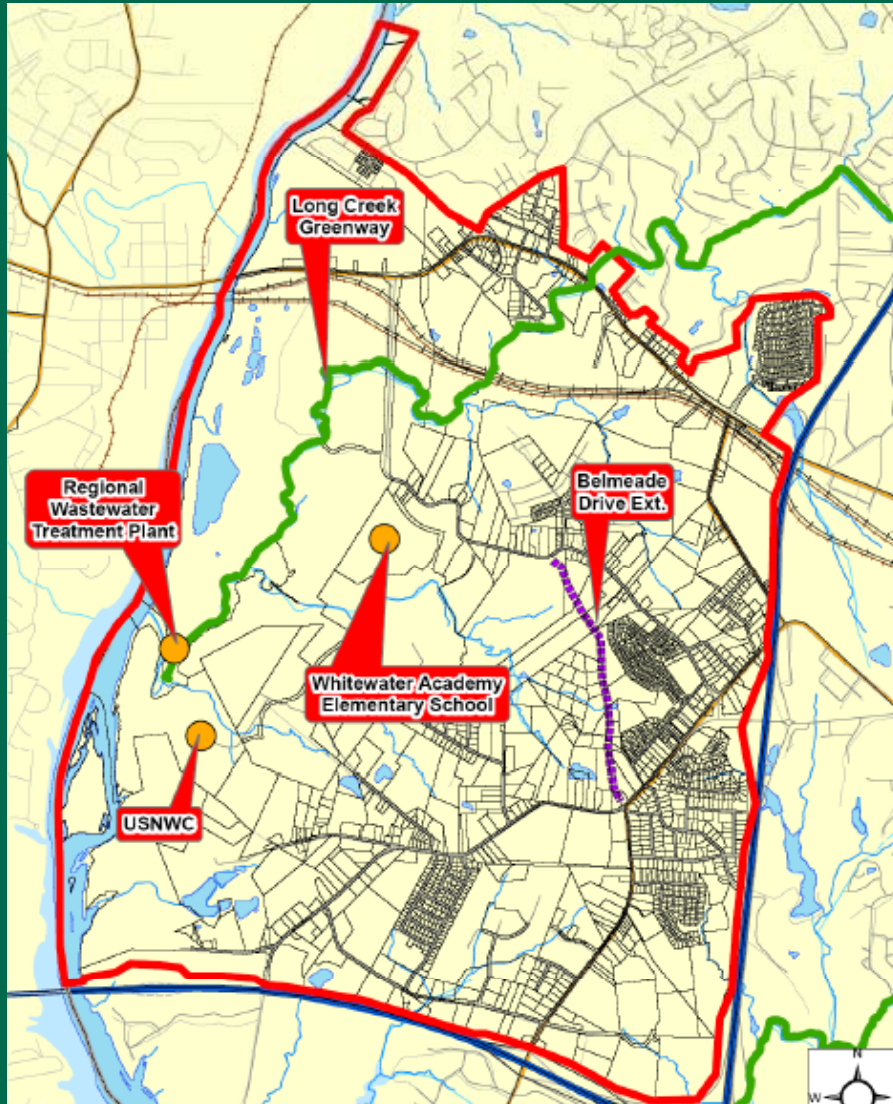


CITY OF CHARLOTTE

## Existing Conditions: Environment



- **Catawba River Watershed**
  - Critical (1,550 acres)
  - Protected (3,245 acres)
- **FEMA Floodplain**
  - Catawba River
  - Long Creek
- **Parks and Greenways**
  - USNWC
  - Long Creek Greenway



- US National Whitewater Center
- Whitewater Academy Elementary School
- Long Creek Greenway
- Belmeade Drive Ext.
- I-485 Access



## Existing Conditions

Who lives in the Catawba Community?



What uses are in the Community?

How do we shape the future?

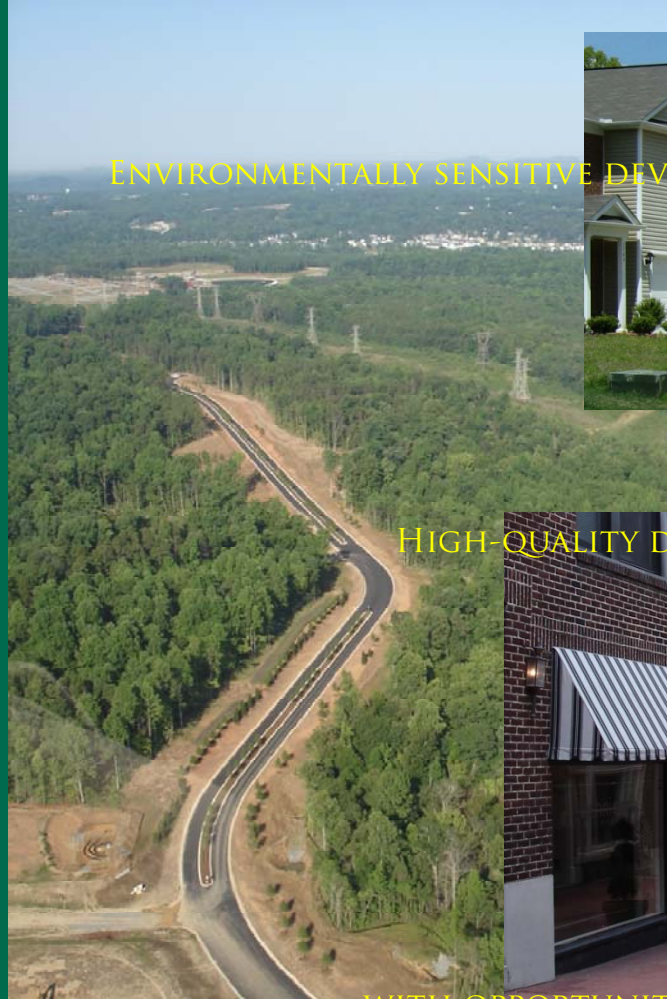


CITY OF CHARLOTTE

# Vision Statement

A THRIVING COMMUNITY ON THE CATAWBA RIVER

ENVIRONMENTALLY SENSITIVE DEVELOPMENT



SAFE NEIGHBORHOODS



EMPHASIS ON  
CONSERVATION

HIGH-QUALITY DESIGN



EFFICIENT ROAD NETWORK

...WITH OPPORTUNITIES  
TO LIVE, WORK & PLAY...

CHARMECK.ORG



## What is a Vision Statement?

- **Vision:** A community based planning effort in which citizens and staff work together to identify the kind of community that the people who live, work, play in the area would like to see it become over the next 20 to 30 years.





## What is a vision statement?

- A vision is a statement or description of what the area **could be like** in the future, stated in a **positive light**. It is **long-range** in time frame, **based in reality** and **embraces** Charlotte's broad, community-wide policies.



- Typical component of a Vision Statement:
  - ❖ Appealing place to live, work & play
  - ❖ Variety of housing choices
  - ❖ Safe and attractive neighborhoods
  - ❖ Variety of transportation modes
  - ❖ Convenient to business centers, entertainment & recreational amenities
  - ❖ Protection of natural resources (creeks, wetlands, trees)
  - ❖ Network of parks, trails, open spaces and other facilities for passive and active recreation



# Table Exercise

- In groups around your table, **review** the three vision statements.
- **Identify** the statement that best summarizes the “vision” for the Catawba community.
- You may **modify** the language.
- Select a spokesperson to share your group’s vision statement.