



## CHARLOTTE HISTORIC DISTRICT COMMISSION

### CERTIFICATE OF APPROPRIATENESS

**CERTIFICATE NUMBER:** HDCADMRM-2019-00371

**DATE:** 17 July 2019

**ADDRESS OF PROPERTY:** 1121 Myrtle Ave, Myrtle Square (entire property)

**HISTORIC DISTRICT:** Dilworth

**TAX PARCEL NUMBER:** 12305801-12305872

**APPLICANT:** Mark Lane, Myrtle Square HOA Board President

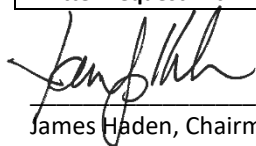
**DETAILS OF APPROVED PROJECT:** Transformers, Electrical Meter Banks and Ductless Heat Pump Condenser units. The project is for the installation of 4 new transformer units on the sides and rear of the property as well as the replacement of one existing transformer unit. The transformer units will be screened from view using appropriate plantings or fencing. Electrical meter banks will be installed on the sides of the buildings as indicated in the 'Site Plan – July 2019' and painted to match the buildings. The Ductless Heat Pump Condenser units will be installed on the center of the building roofs and will not be seen from the ground. See attached exhibits labeled, 'Site Plan – July 2019', 'Meter Centers – July 2019 (pages 1-6)', 'Crawlspace Access Options – July 2019', 'Pass-Thru Detail – July 2019' 'Transformers – July 2019' and 'Ductless Heat Pump Condensers - July 2019 (pages 1-3).'

1. Applicable Policy & Design Guidelines and Approval Authority – Projects Eligible for Administrative Approval, page 2.6: Landscape & Site Features and Work in Rear Yards.
2. The materials and design meets the applicable Design Guidelines for Site Appurtenances (page 8.8).

**Contact staff prior to making any changes to this approval. Any deviation from the work/materials approved in this COA may result in 1.) a Notice of Violation and Stop Work Order, and 2.) required removal or replacement to bring the work into compliance with this COA and the Charlotte Historic District Design Guidelines.**

- This Certificate of Appropriateness (COA) indicates that this project proposal has been determined to comply with the standards and policies of the Charlotte Historic District Commission.
- Display the blue COA placard in a visible location along with any required permits.
- No other approvals are to be inferred.
- No demolition other than that specifically indicated on any attached plans is authorized under this approval.
- All work must be completed in accordance with all other applicable state and local codes.
- Any changes from or additions or deletions to the plans referenced herein will void this Certificate, and a new application must be filed with the Historic District Commission.

**This Certificate is valid for a period of twelve (12) months from the date of issuance. Failure to obtain a building permit in that time will be considered as a failure to comply with the Certificate and the Certificate will become invalid. If a building permit is not required, then the approved work must be completed within twelve (12) months of the date of issuance of this Certificate. In either situation, the Certificate can be renewed for an additional twelve (12) months by Historic District Commission staff by written request within the first twelve (12) months from the date of issuance.**

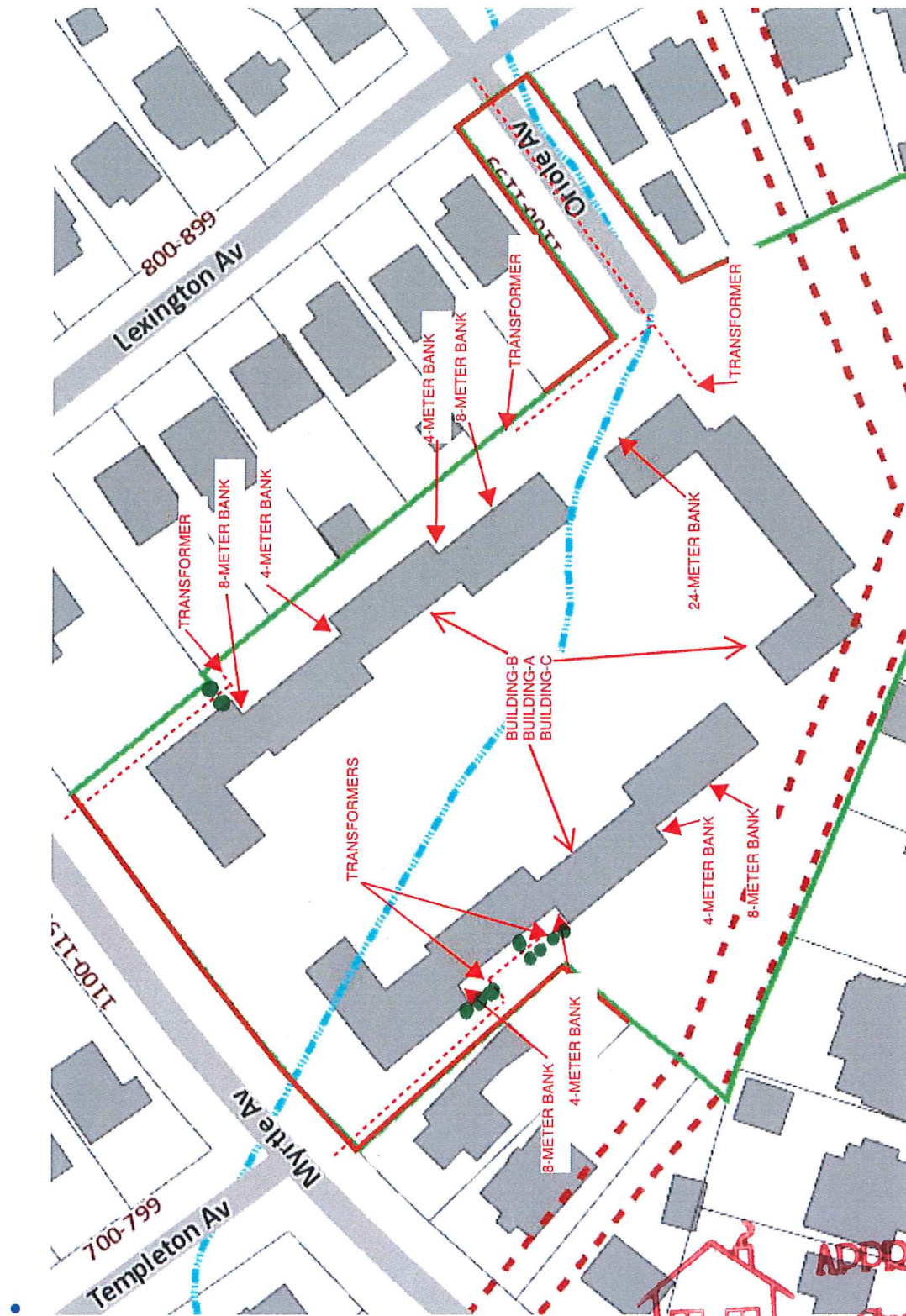
  
James Haden, Chairman  
Staff

CHARLOTTE-MECKLENBURG PLANNING DEPARTMENT

[www.charlotteplanning.org](http://www.charlotteplanning.org)

600 East Fourth Street  
Charlotte, NC 28202-2853  
PH: (704)-336-2205  
FAX: (704)-336-5123

# Site Plan - July 2019



● = plantings to screen -  
leave allowance for Duke  
required clearances

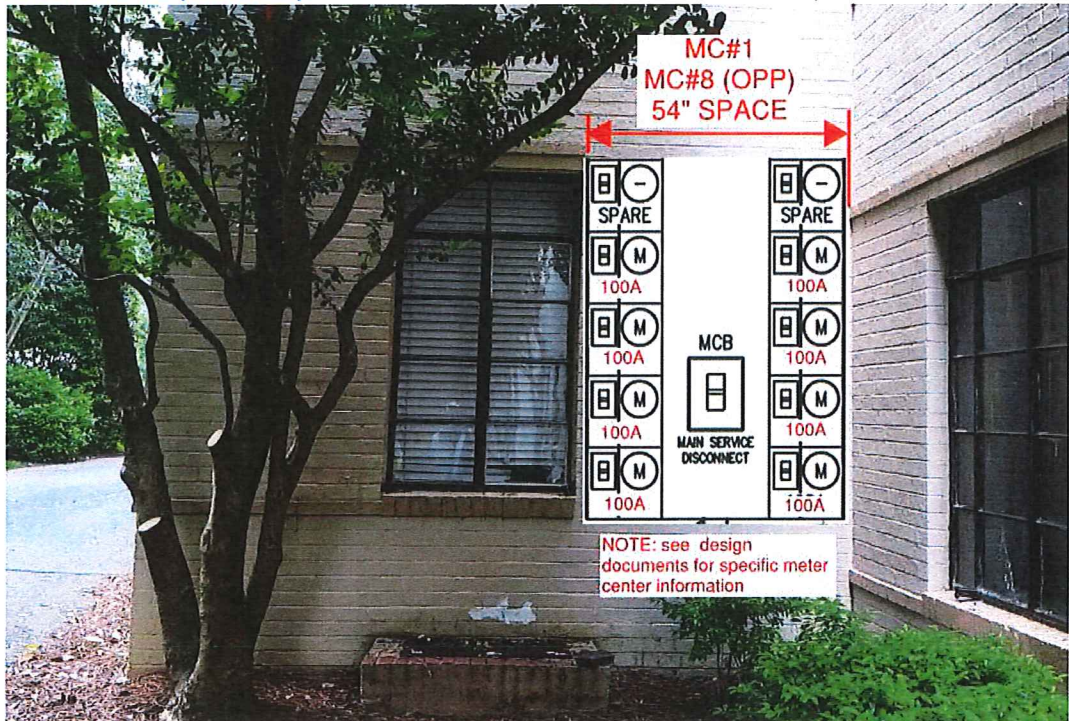


HDCADMRM-2019 -  
00371

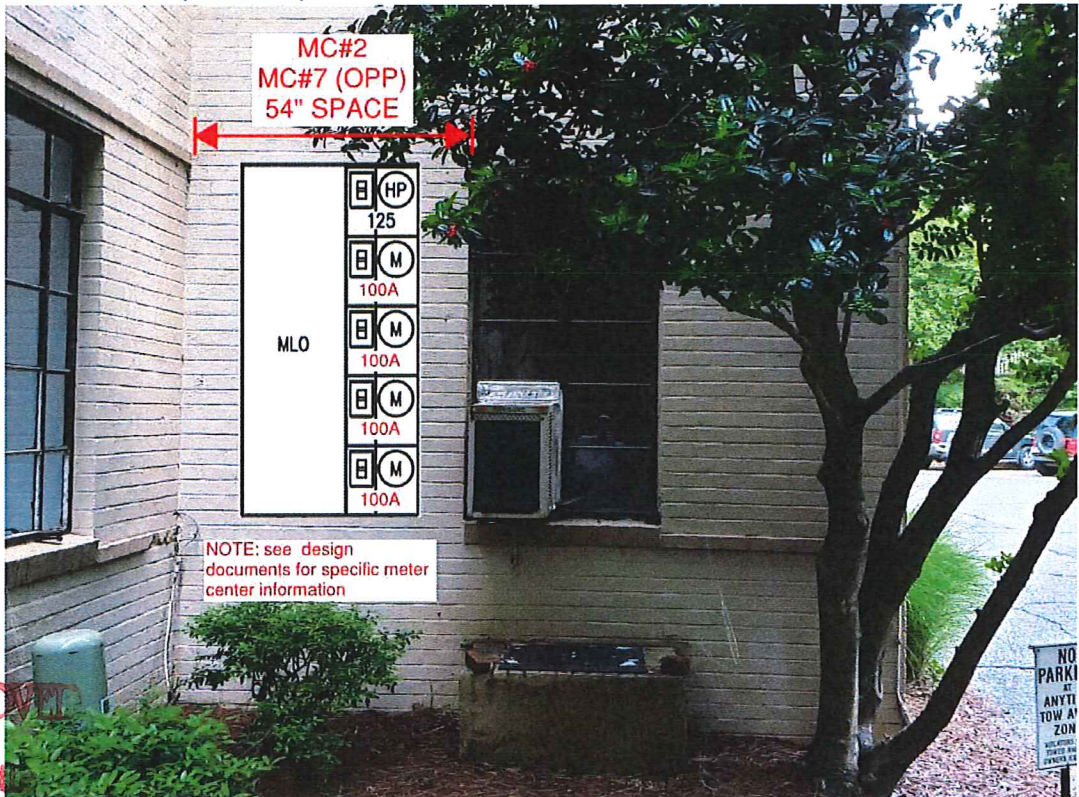


- Meter Centers
  - MC#1 and #8 (mirrored)

- July 2019



- MC#2 and #7 (mirrored)



APPROVED

Charlotte  
Historic District  
Commission

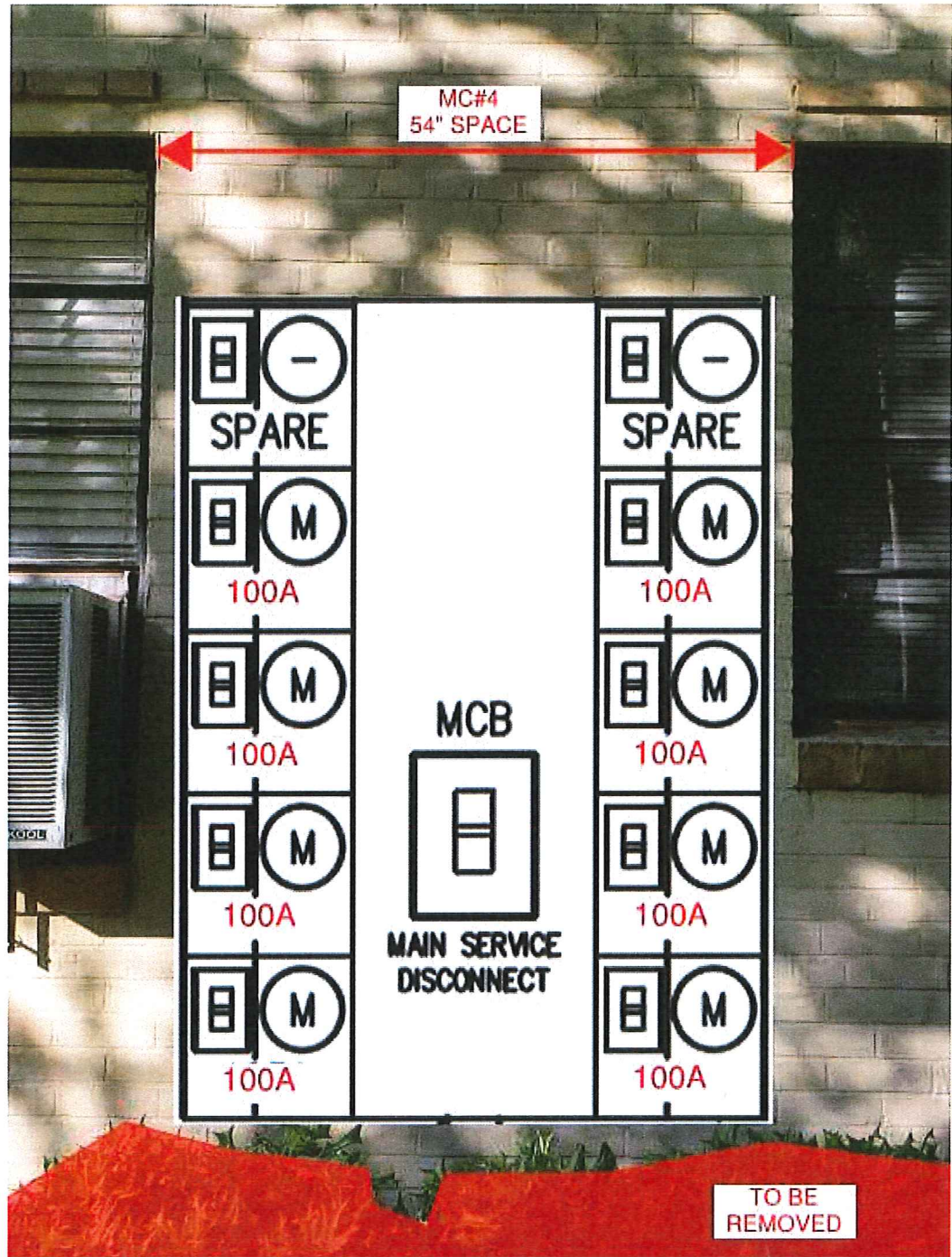
Certificate of Appropriateness

HDC Admin - 2019 - 00371



# Meter Centers-July 2019 ②

MC#4



APPROVED

Charlotte  
Historic District  
Commission

Certificate of Appropriateness

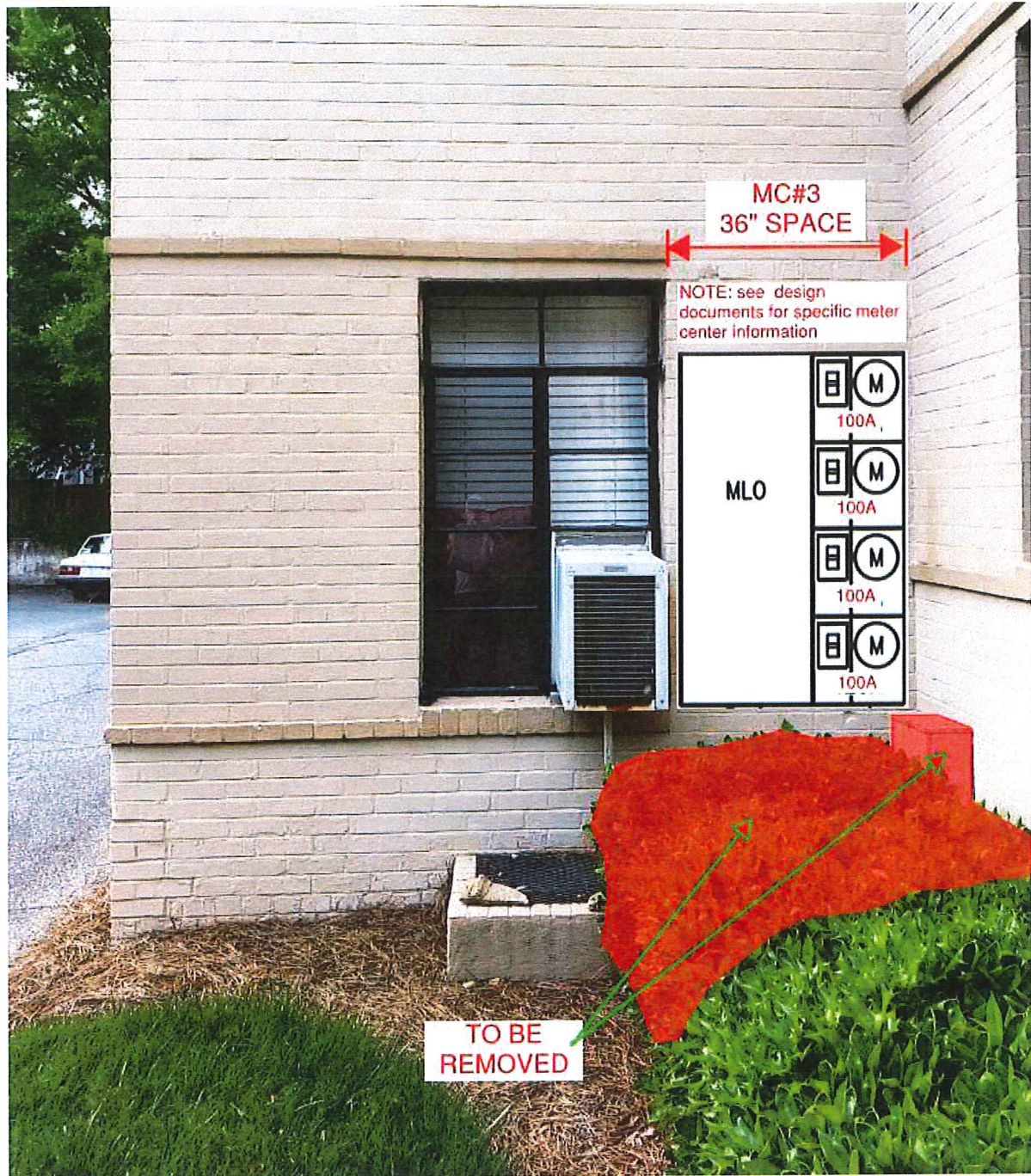
HDCADM-2019-00371



# Meter Centers - July 2019

3

o MC#3



APPROVED

Charlotte  
Historic District  
Commission

Certificate of Appropriateness

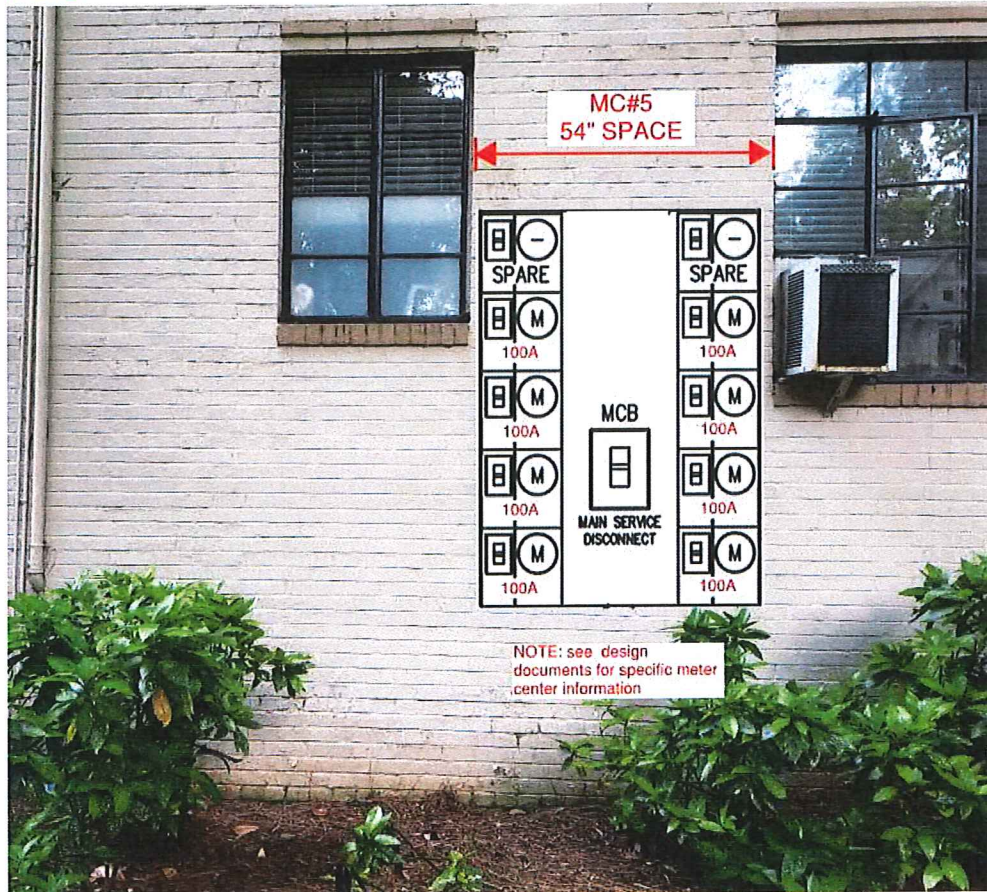
HDCADM-2019-00371



# meter centers - July 2019

4

- MC#5



- MC#6



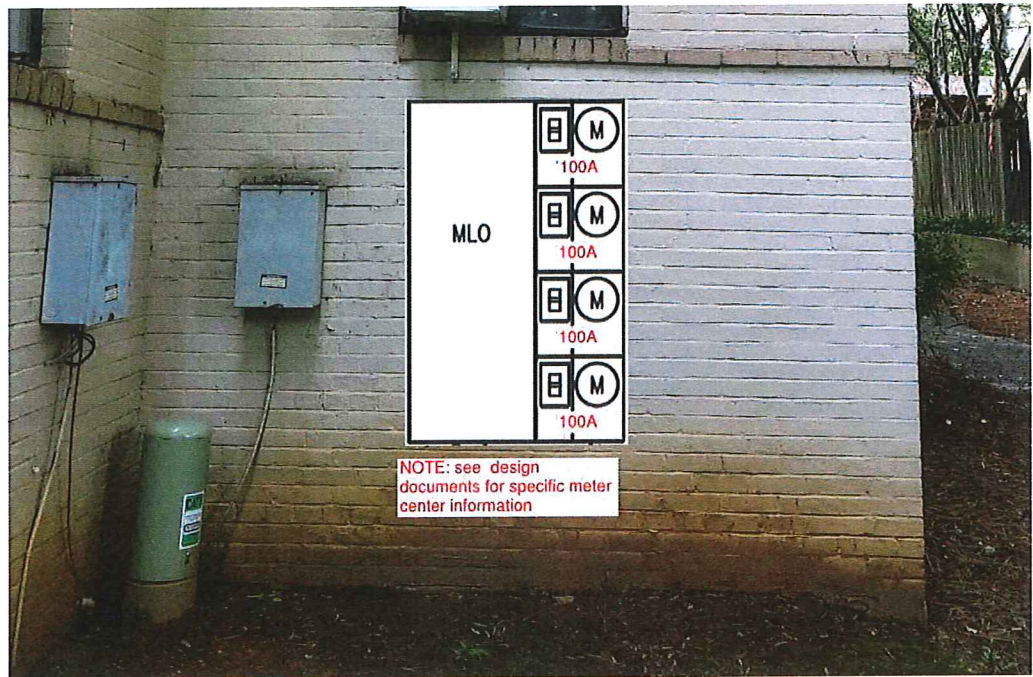
APPROVED

Charlotte  
Historic District  
Commission

Certificate of Appropriateness

HDCADNR# 2019-00371

# Meter Centers- July 2019 ⑤



- o
- o MC#9



APPROVED

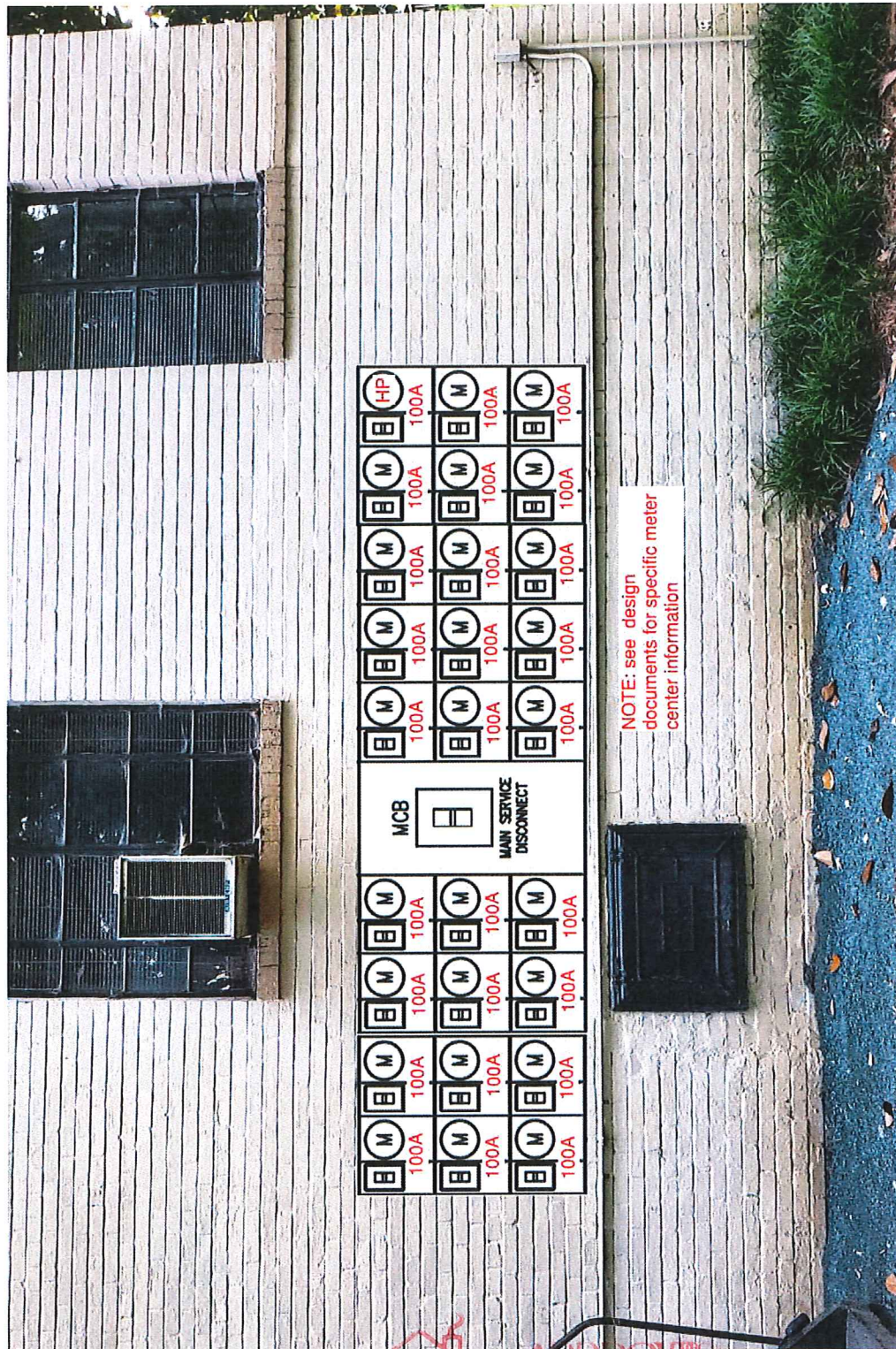
Charlotte  
Historic District  
Commission

Certificate of Appropriateness

# HDCADM-RM-2019-00371



# meter centers - July 2019 (6)



- Crawlspace Access Options



APPROVED

Charlotte  
Historic District  
Commission

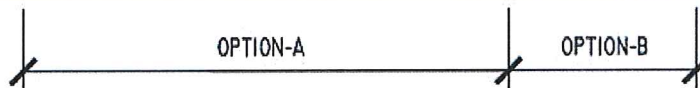
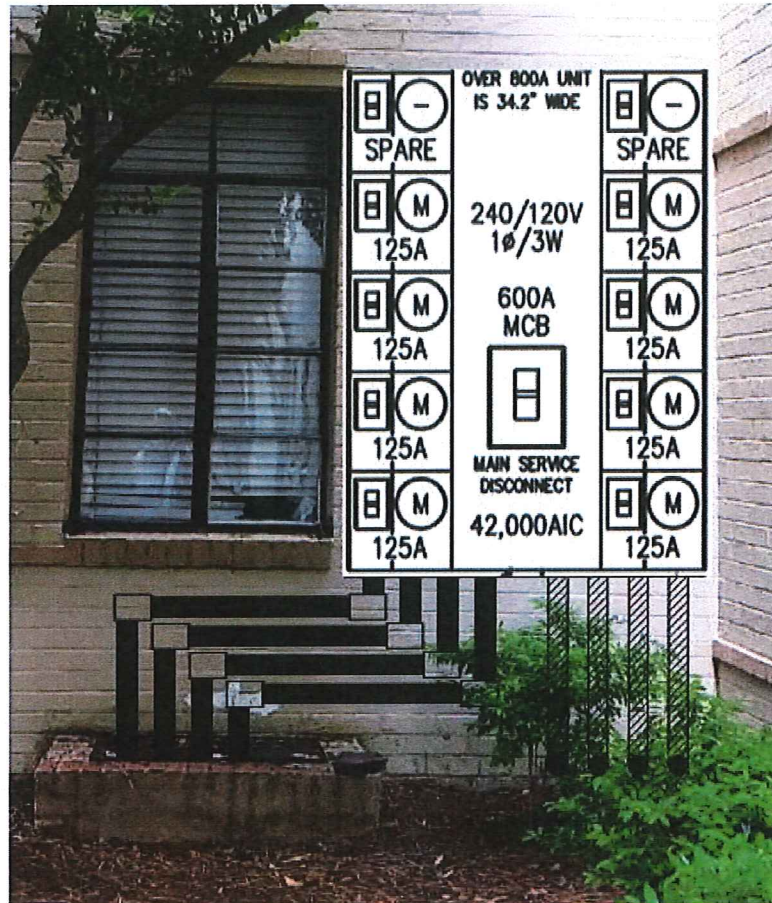
Certificate of Appropriateness

HDCADM-2019-00371



# CRAWLSPACE ACCESS OPTIONS

July 2019



OPTION-A:  
UTILIZE CRAWLSPACE VENTILATION  
WELLS TO NAVIGATE CONDUIT FROM  
METER CENTERS TO CRAWLSPACE FOR  
CONNECTION BETWEEN PRIMARY SCOPE  
(EXTERIOR) AND PRIMARY SCOPE  
(INTERIOR)

OPTION-B:  
SEE PROPOSED EXTERIOR WALL  
"PASS-THRU" DETAIL

- Proposed Exterior Wall "Pass-Thru" Detail



APPROVED

Charlotte  
Historic District  
Commission

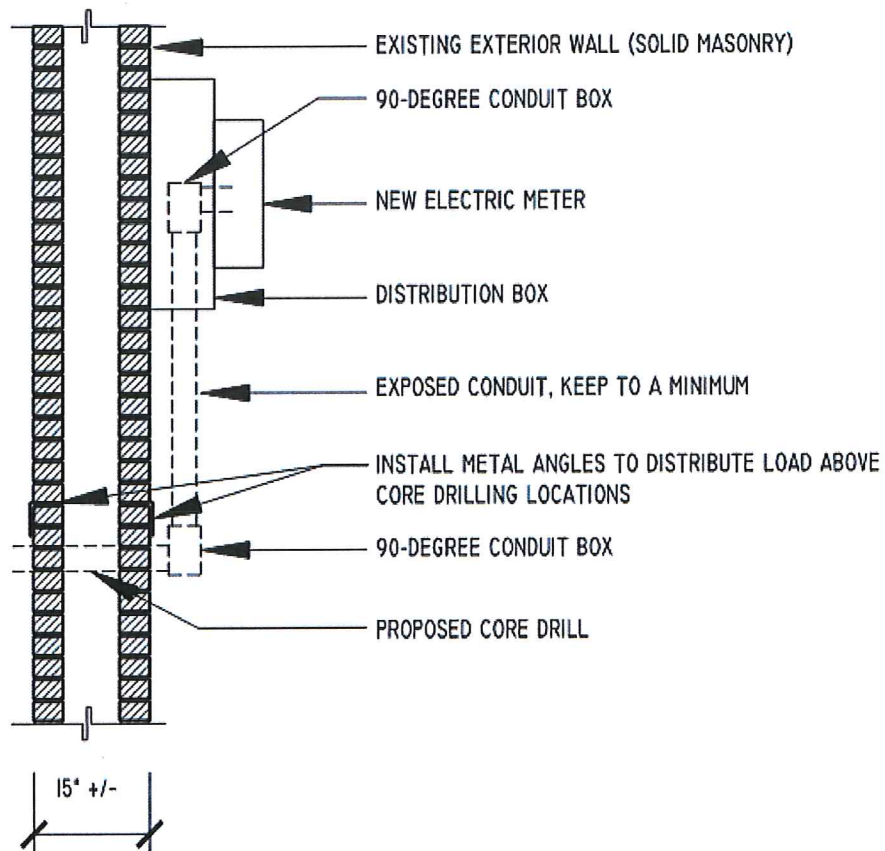
Certificate of Appropriateness

HDCADM-2019-00371



# PROPOSED EXTERIOR WALL "PASS-THRU" DETAIL

July  
2019



APPROVED

Charlotte  
Historic District  
Commission

Certificate of Appropriateness

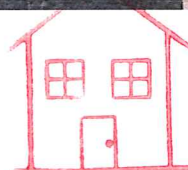
# HDCADM-RM-2019-00371



# Transformers July 2019



APPROVED



Charlotte  
Historic District  
Commission

Certificate of Appropriateness

HDCADM-2019-00371



# Ductless Heat Pump Condensers - ① July 2019

## SMALL UNITS:

Home / Shop by Brand / Mitsubishi / MUFZ-KJ18NAHZ-U1

### Mitsubishi 18,000 BTU 21 SEER Ductless Hyper Heat Pump Condenser

Model: MUFZ-KJ18NAHZ-U1 Item Number: 76630

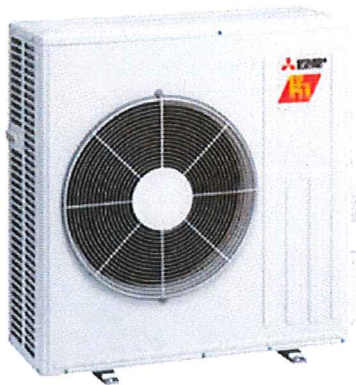


**Our Price: \$1,746.75**

As low as \$154 / month at 10% APR with [Affirm](#) ①

[See how much you qualify for](#)

**Ships in 4-7 Business Days**



- ① Free Shipping ②
- ③ Free Lift Gate ②
- ④ Low Price Guarantee ②

## Dimensions

Maximum Line Length	100 Feet
Liquid Connection Size	1/4 Inch
Gas Connection Size	1/2 Inch
Product Height	34 5/8 Inches
Product Width	33 1/16 Inches
Product Depth	13 Inches
Product Weight	124 Pounds
Shipping Weight	134 Pounds



**APPROVED**

Charlotte  
Historic District  
Commission

Certificate of Appropriateness

HDCADM-2019-00371

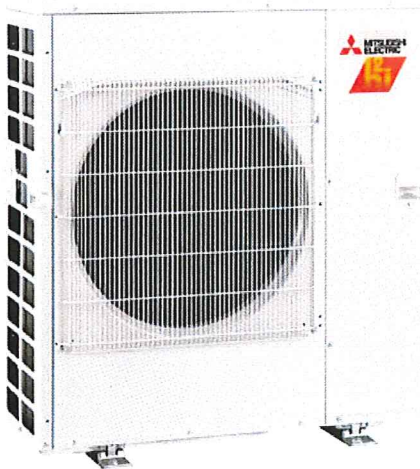
# Ductless Heat Pump Condensers- July 2019 ②

## MID-SIZE UNITS:

Home / Shop by Brand / Mitsubishi / MXZ-3C30NAHZ2-U1

### Mitsubishi 28,600 BTU Ductless Multi Zone Hyper Heat Pump Condenser

Model: MXZ-3C30NAHZ2-U1 Item Number: 68689



[Enlarge Image](#)

**Our Price: \$3,283.50**

As low as \$289 / month at 10% APR with [Affirm](#)

[See how much you qualify for](#)

**10 In-Stock Ships Wednesday, July 10th**

- 1 +

[Add To Cart](#)

Free Shipping

Free Lift Gate

Low Price Guarantee

## Dimensions

Maximum Line Length	230 Feet
Line Set A Liquid Connection	1/4 Inch
Line Set A Gas Connection	1/2 Inch
Line Set B Liquid Connection	1/4 Inch
Line Set B Gas Connection	3/8 Inch
Line Set C Liquid Connection	1/4 Inch
Line Set C Gas Connection	3/8 Inch
Product Height	41 7/24 Inches
Product Width	37 5/12 Inches
Product Depth	13 Inches
Product Weight	189 Pounds
Shipping Weight	199 Pounds



**APPROVED**

**Charlotte  
Historic District  
Commission**

**Certificate of Appropriateness**

**HDCADMRM - 2019-00371**



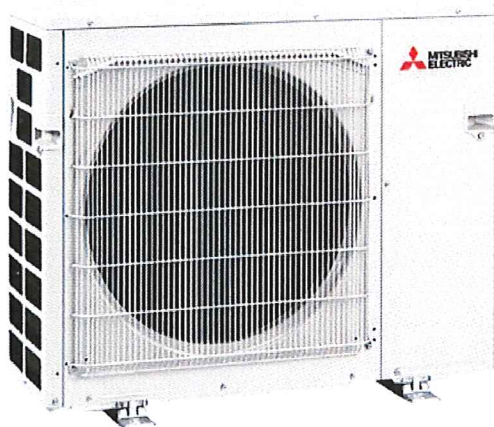
# Ductless Heat Pump Condensers-<sup>③</sup> July 2019

## LARGE UNITS:

Home / Shop by Brand / Mitsubishi / MXZ-4C36NA2-U1

### Mitsubishi 36,000 BTU Ductless Multi Zone Heat Pump Condenser

Model: MXZ-4C36NA2-U1 Item Number: 68692



[Enlarge Image](#)

**Our Price: \$2,815.50**

As low as \$248 / month at 10% APR with [Affirm](#) ①

[See how much you qualify for](#)

**Only 3 In-Stock Ships Wednesday, July 10th**



① Free Shipping ②

③ Free Lift Gate ②

④ Low Price Guarantee ②

## Dimensions

Maximum Line Length	230 Feet
Line Set A Liquid Connection	1/4 Inch
Line Set A Gas Connection	1/2 Inch
Line Set B Liquid Connection	1/4 Inch
Line Set B Gas Connection	3/8 Inch
Line Set C Liquid Connection	1/4 Inch
Line Set C Gas Connection	3/8 Inch
Line Set D Liquid Connection	1/4 Inch
Line Set D Gas Connection	3/8 Inch
Product Height	31 17/48 Inches
Product Width	37 5/12 Inches
Product Depth	13 Inches
Product Weight	139 Pounds
Shipping Weight	149 Pounds



APPROVED

Charlotte  
Historic District  
Commission

Certificate of Appropriateness

HDCADM2M-2019-

00371