
LOCAL HISTORIC DISTRICT: Dilworth

PROPERTY ADDRESS: 2010 The Plaza

SUMMARY OF REQUEST: Access Ramp

APPLICANT/OWNER: Davin Stamp, Kevin Kennedy

Details of Proposed Request

Existing Conditions

The property at 2010 The Plaza is the Van Landingham Estate, a designated local historic landmark. The four-acre property has two accessory buildings with fairly dense landscaping.

Proposal

The project is the construction of a new access ramp. The ramp is located to the rear of the carport and will not be visible from The Plaza. The ramp is reversible and does not impact the historic structure. Materials include masonry and a simple metal handrail.

The project also includes repairs, minor changes to windows and doors on a previous addition to the house, and new at-grade patio areas – all of which are approvable at the Administrative level.

Design Guidelines for Access Ramps, page 8.10

1. Locate access ramps at a well-defined entrance to the building and where providing that access will not cause permanent damage to character defining features of the building. The ideal approach is to place access ramps or other structures to the side or rear of the building. If site conditions preclude this option, a ramp on the front elevation should be sensitive to the character and materials of the existing building. Designs should be unobtrusive, simple, and meet slope requirements for such elements.
2. Ensure that any solution is reversible; that it may be built, used, and removed without permanent damage to the historic features of the building. Retain and preserve historic elements, such as porch railings, so that these original features may be restored to the structure when a ramp is removed.
3. Landscaped screening, the careful choice of building materials, and compatible color choices are all suggested ways of lessening the visual impact of access ramp structures.
4. In lieu of a ramp, mechanical lifts or other devices can be used as a less intrusive alternative or if space limitations do not allow a ramp

Staff Recommendation

1. The project is not incongruous with the District and meets guidelines for Access Ramps, page 8.10.
2. Staff Recommends full approval for meeting all the Guidelines, per 10.4.1 of the Rules for Procedure.
3. If requested by a Commission member, or if an interested party has signed up to speak in opposition, then the HDC shall open the application for a full hearing.



HDC-2019-00358

PID: 09506130

LOCAL HISTORIC DISTRICT: PLAZA-MIDWOOD

PROPOSED PROJECT: CONSENT AGENDA

July Meeting 2019



VanLandingham Estate



1530 Elizabeth Ave, Suite 200
Charlotte NC 28204

704 405 5980
www.cluckdesign.com

--

Offices: CLT / NYC

2010 The Plaza, Charlotte, NC 28205

Project #: 19_104
Date: 06.19.2019 HDC Submittal

Existing Photos
Facing The Plaza (West)

© 2019 CLUCK DESIGN COLLABORATIVE. ALL RIGHTS RESERVED.

VanLandingham Estate



1530 Elizabeth Ave, Suite 200
Charlotte NC 28204

704 405 5980
www.cluckdesign.com

--

Offices: CLT / NYC

2010 The Plaza, Charlotte, NC 28205

Project #: 19_104
Date: 06.19.2019 HDC Submittal

© 2019 CLUCK DESIGN COLLABORATIVE. ALL RIGHTS RESERVED.

Existing Photos
Facing Belvedere (North)

VanLandingham Estate



1530 Elizabeth Ave, Suite 200
Charlotte NC 28204

704 405 5980
www.cluckdesign.com

--

Offices: CLT / NYC

2010 The Plaza, Charlotte, NC 28205

Project #: 19_104
Date: 06.19.2019 HDC Submittal

© 2019 CLUCK DESIGN COLLABORATIVE. ALL RIGHTS RESERVED.

Existing Photos
Facing East

VanLandingham Estate



1530 Elizabeth Ave, Suite 200
Charlotte NC 28204

704 405 5980
www.cluckdesign.com

--

Offices: CLT / NYC

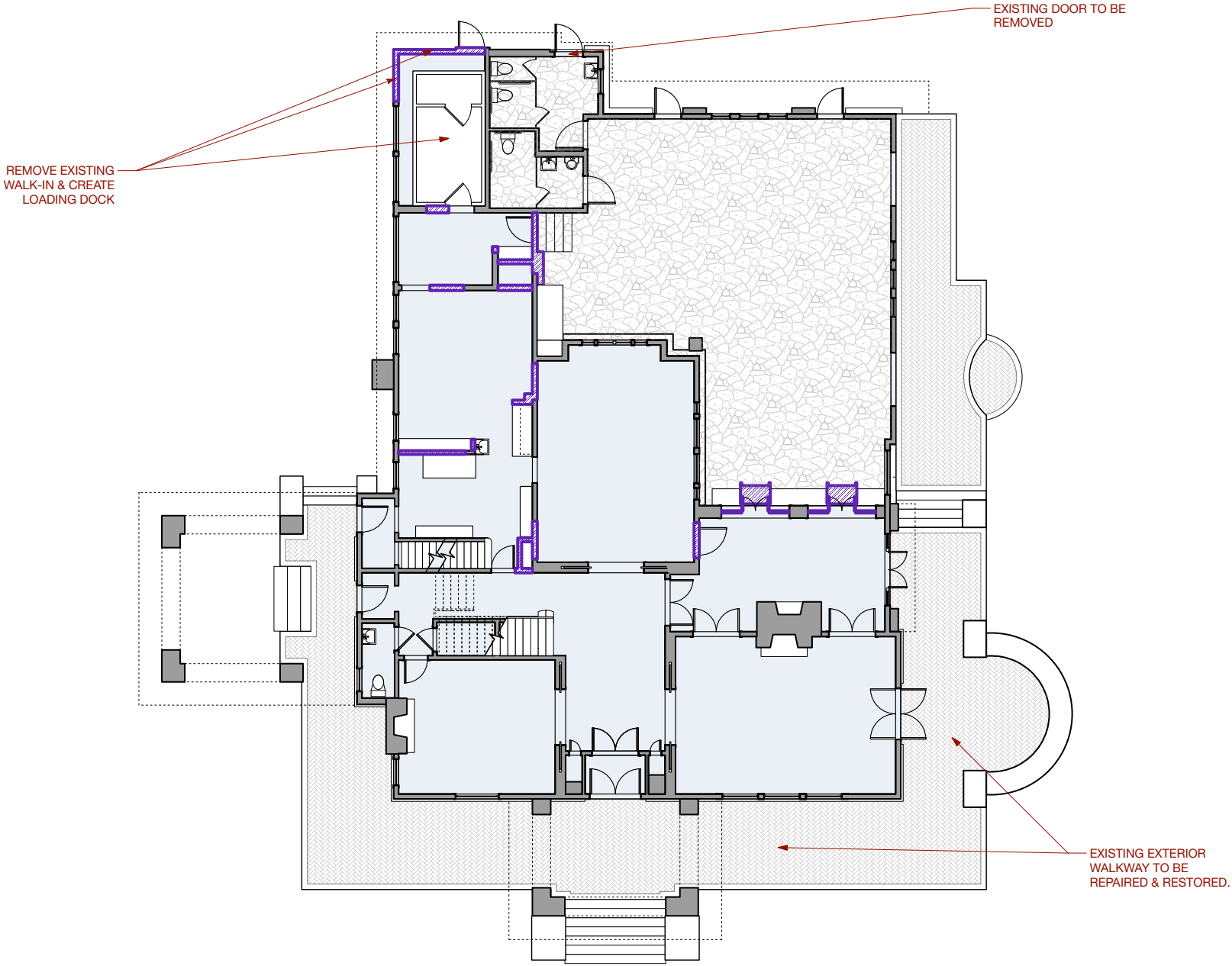
2010 The Plaza, Charlotte, NC 28205

Project #: 19_104
Date: 06.19.2019 HDC Submittal

© 2019 CLUCK DESIGN COLLABORATIVE. ALL RIGHTS RESERVED.

Existing Photos
Facing South

VanLandingham Estate



1530 Elizabeth Ave, Suite 200
Charlotte NC 28204

704 405 5980
www.cluckdesign.com

--

Offices: CLT / NYC

cluck
DESIGN COLLABORATIVE

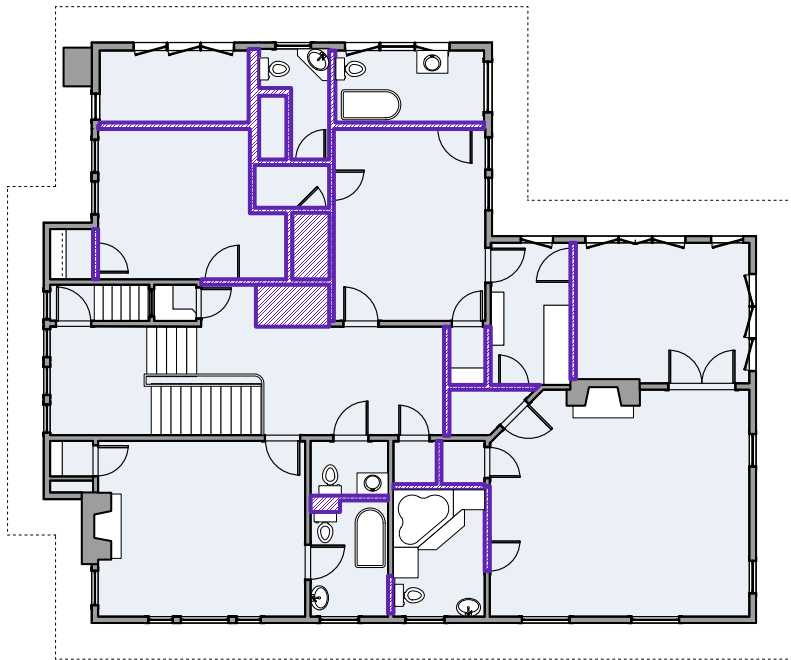
2010 The Plaza, Charlotte, NC 28205

Project #: 19_104
Date: 06.19.2019 HDC Submittal

© 2019 CLUCK DESIGN COLLABORATIVE. ALL RIGHTS RESERVED.

Existing Floor Plan - First Floor
1" = 16'-0"

VanLandingham Estate



1530 Elizabeth Ave, Suite 200
Charlotte NC 28204

704 405 5980
www.cluckdesign.com

--

Offices: CLT / NYC

2010 The Plaza, Charlotte, NC 28205

Project #: 19_104
Date: 06.19.2019 HDC Submittal

© 2019 CLUCK DESIGN COLLABORATIVE. ALL RIGHTS RESERVED.

Existing Floor Plan - 2nd Floor 1" = 16'-0"

VanLandingham Estate



1530 Elizabeth Ave, Suite 200
Charlotte NC 28204

704 405 5980
www.cluckdesign.com

--

Offices: CLT / NYC

2010 The Plaza, Charlotte, NC 28205

Project #: 19_104
Date: 06.19.2019 HDC Submittal

© 2019 CLUCK DESIGN COLLABORATIVE. ALL RIGHTS RESERVED.

Existing Elevation - Facing The Plaza (West)
1" = 16'-0"

VanLandingham Estate



1530 Elizabeth Ave, Suite 200
Charlotte NC 28204

704 405 5980
www.cluckdesign.com

--

Offices: CLT / NYC

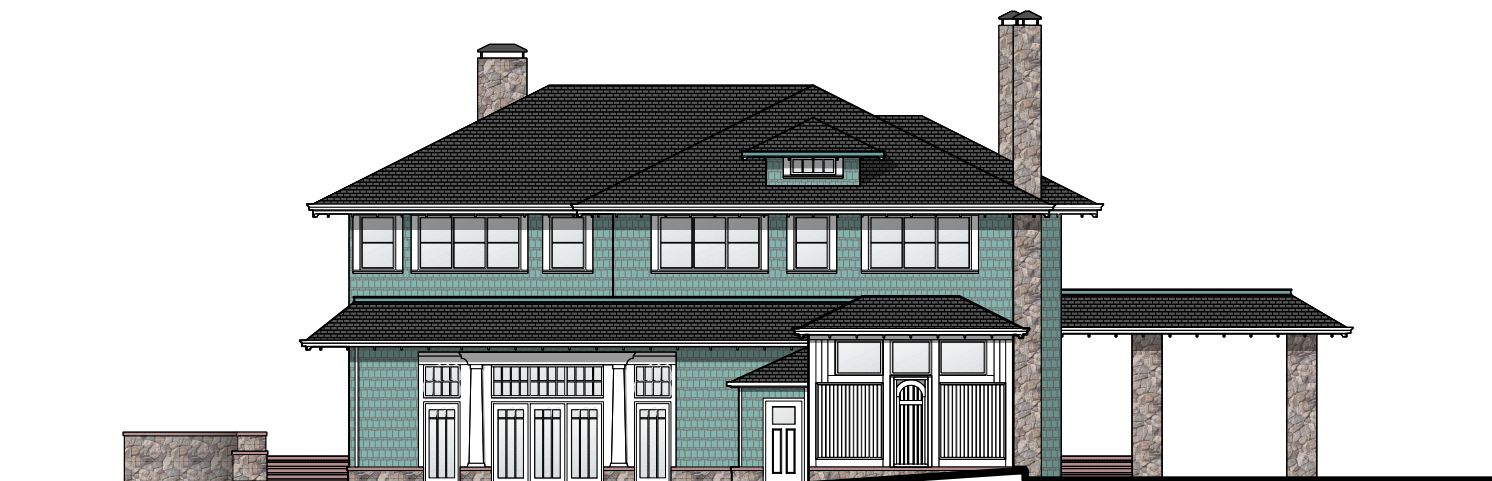
2010 The Plaza, Charlotte, NC 28205

Project #: 19_104
Date: 06.19.2019 HDC Submittal

© 2019 CLUCK DESIGN COLLABORATIVE. ALL RIGHTS RESERVED.

Existing Elevation - Facing Belvedere (North)
1" = 16'-0"

VanLandingham Estate



1530 Elizabeth Ave, Suite 200
Charlotte NC 28204

704 405 5980
www.cluckdesign.com

--

Offices: CLT / NYC

2010 The Plaza, Charlotte, NC 28205

Project #: 19_104
Date: 06.19.2019 HDC Submittal

© 2019 CLUCK DESIGN COLLABORATIVE. ALL RIGHTS RESERVED.

Existing Elevation - Facing East
1" = 16'-0"

VanLandingham Estate



1530 Elizabeth Ave, Suite 200
Charlotte NC 28204

704 405 5980
www.cluckdesign.com

--

Offices: CLT / NYC

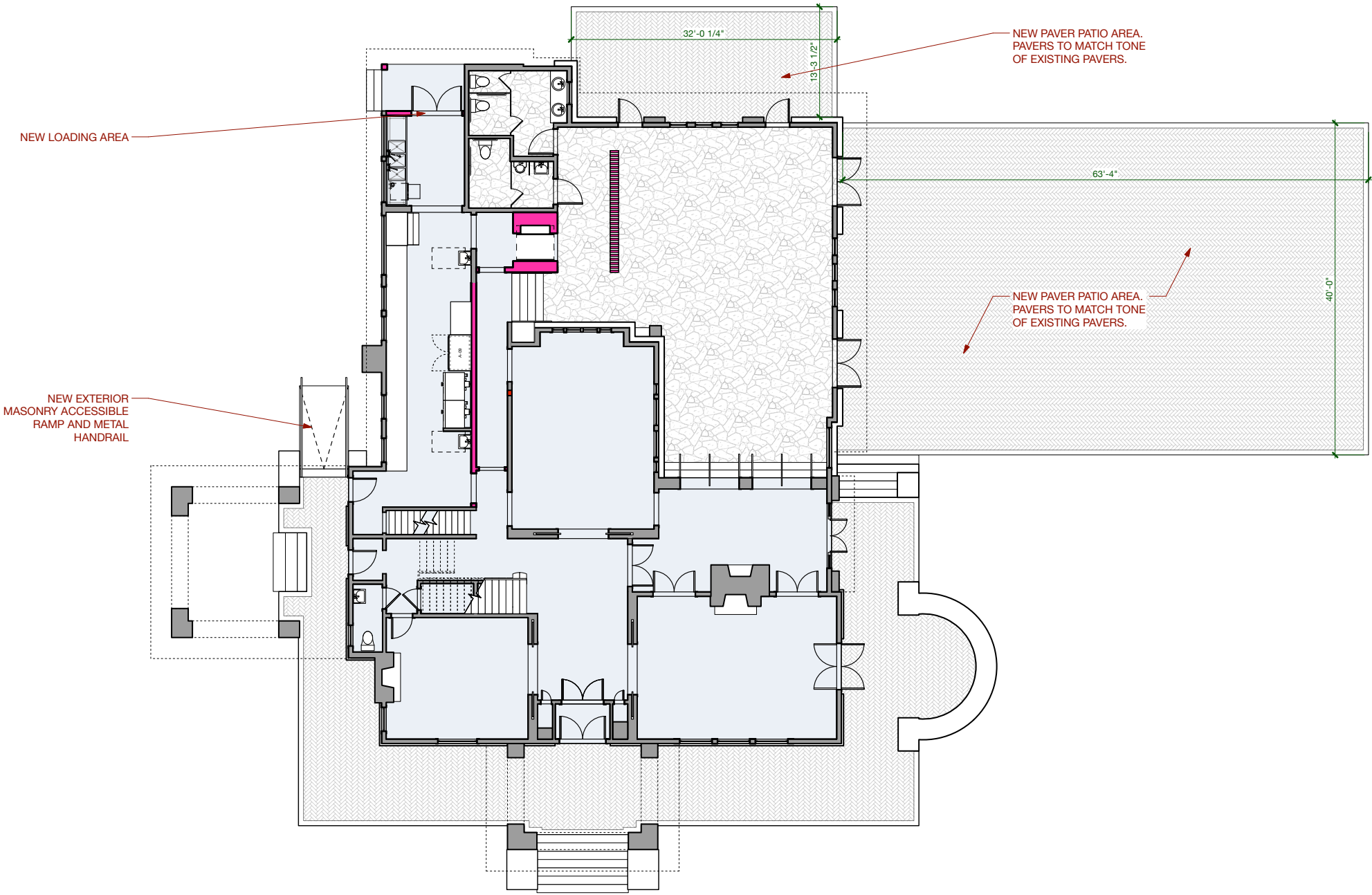
2010 The Plaza, Charlotte, NC 28205

Project #: 19_104
Date: 06.19.2019 HDC Submittal

© 2019 CLUCK DESIGN COLLABORATIVE. ALL RIGHTS RESERVED.

Existing Elevation - Facing South
1" = 16'-0"

VanLandingham Estate



1530 Elizabeth Ave, Suite 200
Charlotte NC 28204

704 405 5980
www.cluckdesign.com

--

Offices: CLT / NYC

cluck
DESIGN COLLABORATIVE

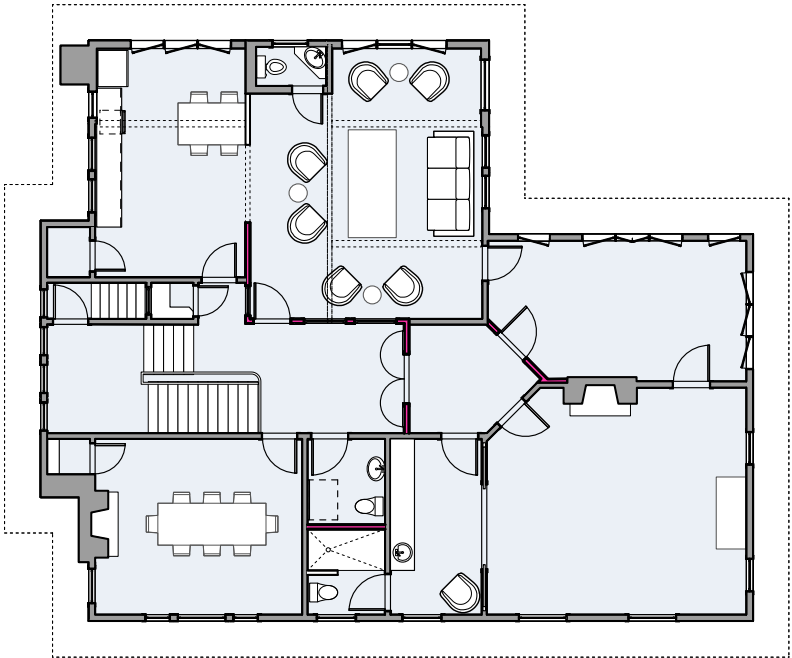
2010 The Plaza, Charlotte, NC 28205

Project #: 19_104
Date: 06.19.2019 HDC Submittal

© 2019 CLUCK DESIGN COLLABORATIVE. ALL RIGHTS RESERVED.

Proposed Floor Plan - First Floor
1" = 16'-0"

VanLandingham Estate



1530 Elizabeth Ave, Suite 200
Charlotte NC 28204

704 405 5980
www.cluckdesign.com

--

Offices: CLT / NYC

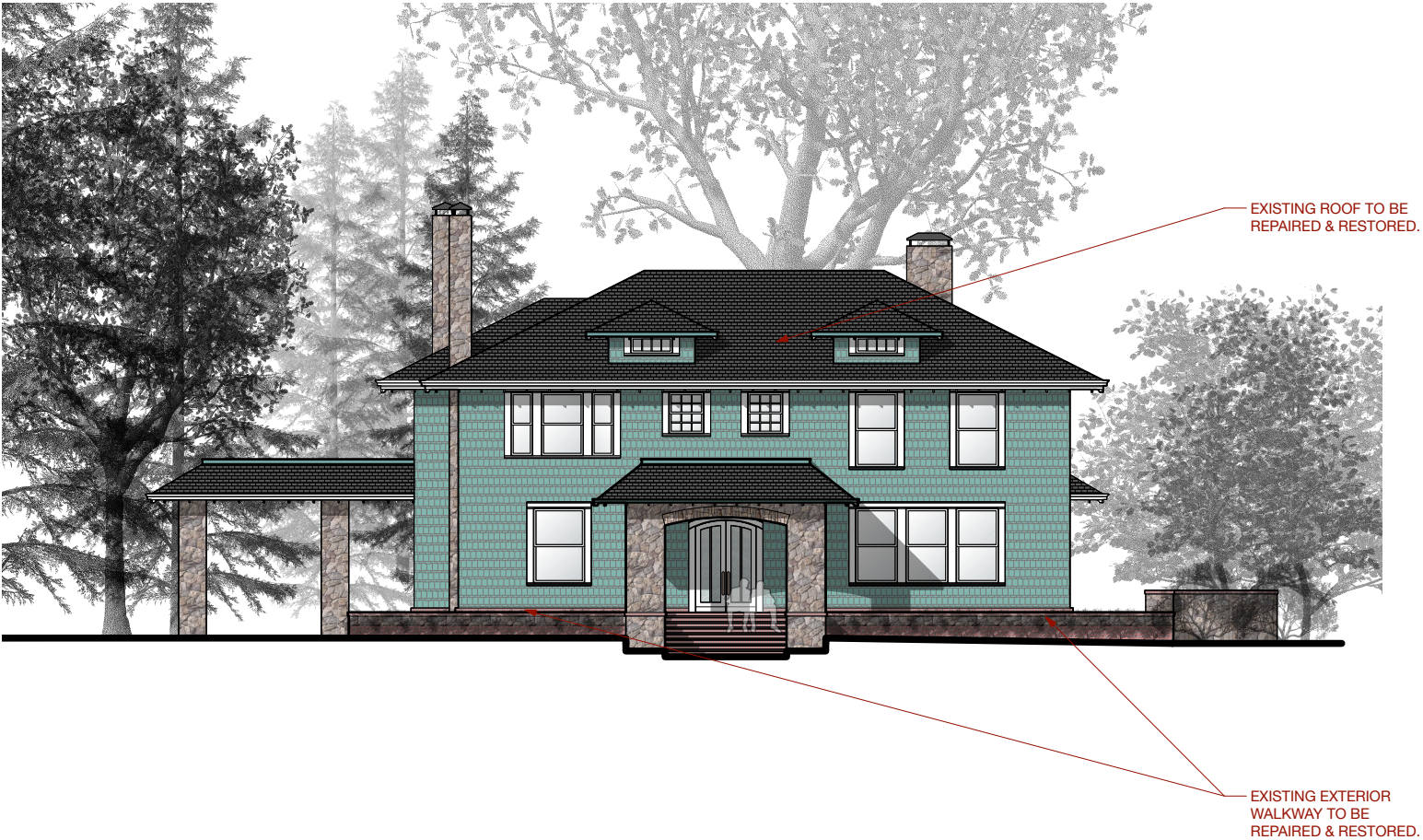
2010 The Plaza, Charlotte, NC 28205

Project #: 19_104
Date: 06.19.2019 HDC Submittal

© 2019 CLUCK DESIGN COLLABORATIVE. ALL RIGHTS RESERVED.

Proposed Floor Plan - 2nd Floor
1" = 16'-0"

VanLandingham Estate



1530 Elizabeth Ave, Suite 200
Charlotte NC 28204

704 405 5980
www.cluckdesign.com

--

Offices: CLT / NYC

2010 The Plaza, Charlotte, NC 28205

Project #: 19_104
Date: 06.19.2019 HDC Submittal

© 2019 CLUCK DESIGN COLLABORATIVE. ALL RIGHTS RESERVED.

Proposed Elevation - Facing The Plaza (West)
1" = 16'-0"

VanLandingham Estate



1530 Elizabeth Ave, Suite 200
Charlotte NC 28204

704 405 5980
www.cluckdesign.com

--

Offices: CLT / NYC

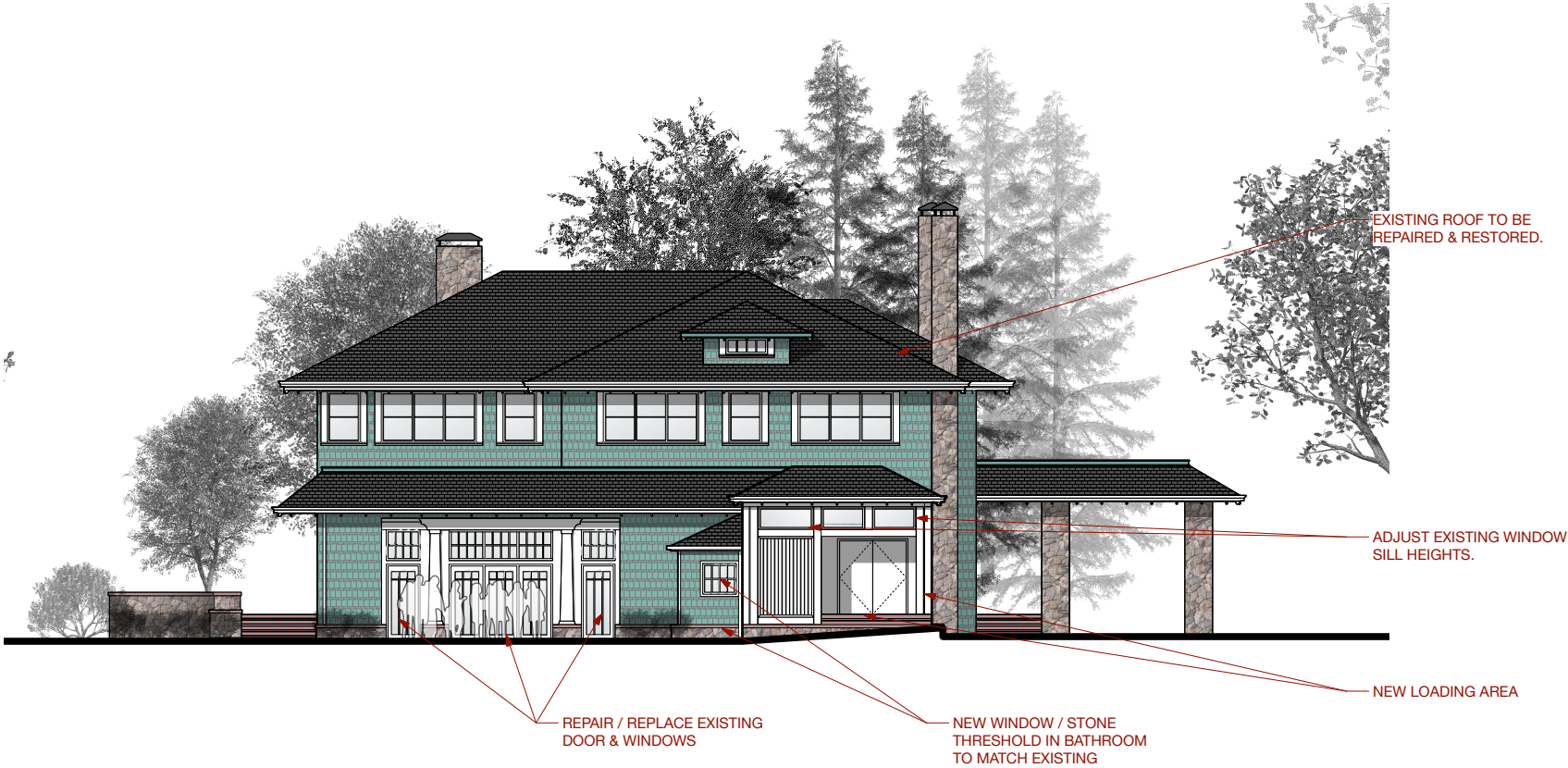
2010 The Plaza, Charlotte, NC 28205

Project #: 19_104
Date: 06.19.2019 HDC Submittal

© 2019 CLUCK DESIGN COLLABORATIVE. ALL RIGHTS RESERVED.

Proposed Elevation - Facing Belvedere (North)
1" = 16'-0"

VanLandingham Estate



1530 Elizabeth Ave, Suite 200
Charlotte NC 28204

704 405 5980
www.cluckdesign.com

--

Offices: CLT / NYC

2010 The Plaza, Charlotte, NC 28205

Project #: 19_104
Date: 06.19.2019 HDC Submittal

© 2019 CLUCK DESIGN COLLABORATIVE. ALL RIGHTS RESERVED.

Proposed Elevation - Facing East
1" = 16'-0"

VanLandingham Estate



1530 Elizabeth Ave, Suite 200
Charlotte NC 28204

704 405 5980
www.cluckdesign.com

--

Offices: CLT / NYC

2010 The Plaza, Charlotte, NC 28205

Project #: 19_104
Date: 06.19.2019 HDC Submittal

© 2019 CLUCK DESIGN COLLABORATIVE. ALL RIGHTS RESERVED.

Proposed Elevation - Facing South
1" = 16'-0"