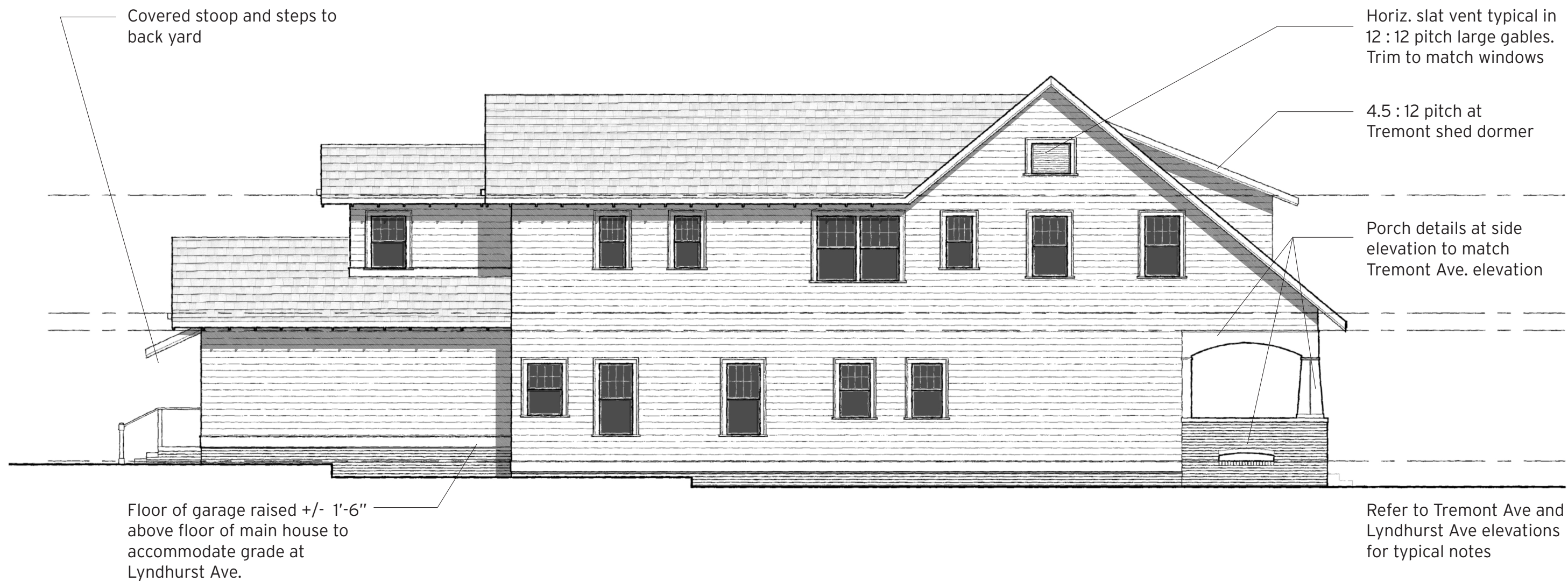

ADDRESS OF PROPERTY:	500 East Tremont Avenue	<i>HDC 2012-144</i>
SUMMARY OF REQUEST:	New Construction	
APPLICANT:	Saussy Burbank	

Details of Proposed Request: New Construction. The HDC recently deferred this application for a two story house with an attached garage for further design study to explore the possibility of a detached garage. This lot is at the corner of Tremont and Lyndhurst Avenues. Revised plans show a detached garage with entry from Lyndhurst. Materials and details are consistent with the neighborhood.

Relevant HDC Design Guidelines

- New Construction
- Setbacks
- Accessory Structures
- Parking, Paving, and Driveways
- Details





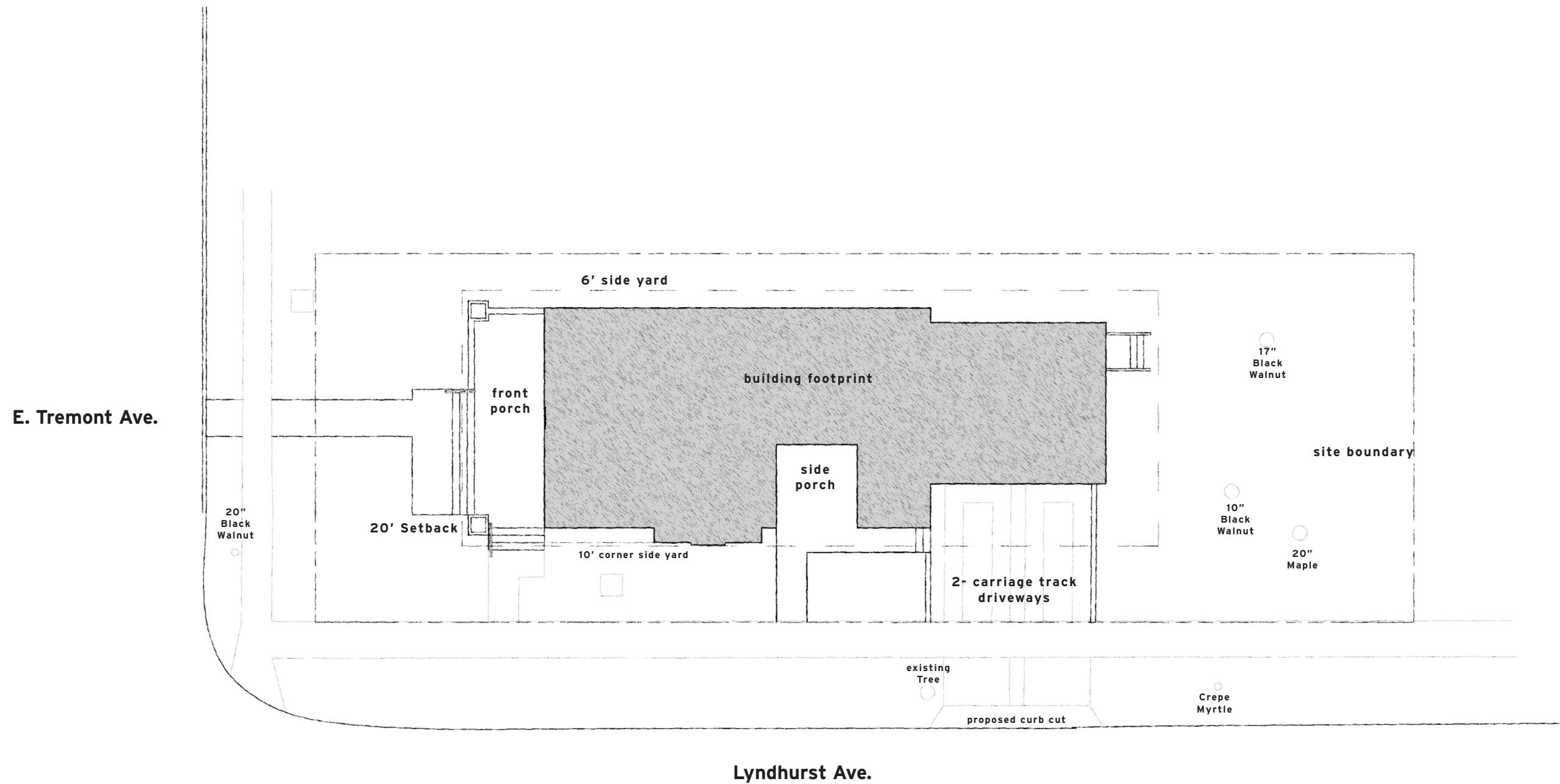
Side Elevation

scale: 1/8" = 1'-0"

Tremont & Lyndhurst
in the Dilworth Historic District

SAUSSY BURBANK :: 505DESIGN

october 31, 2012



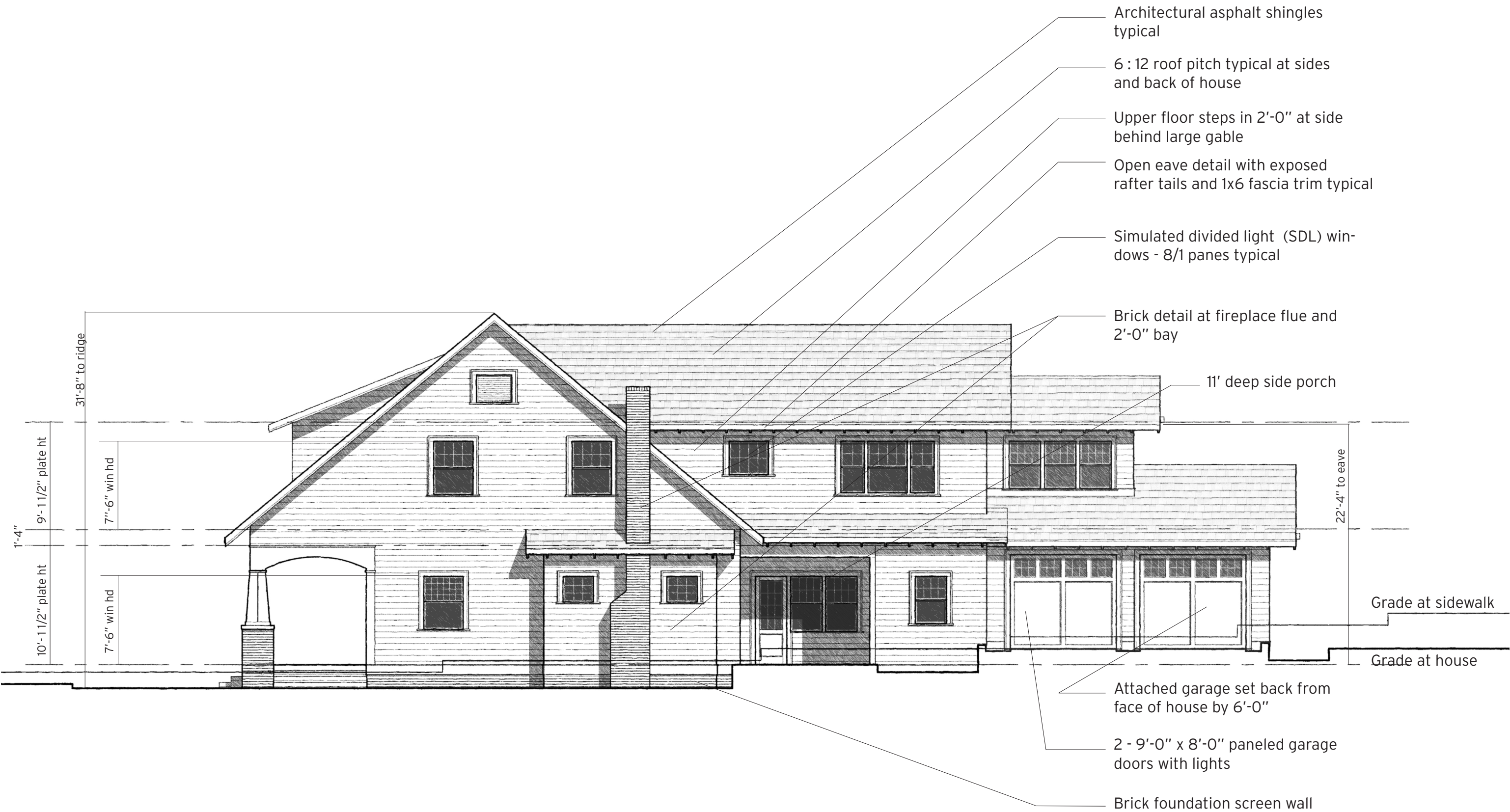
Site Plan

scale: 1/16" = 1'-0"

Tremont & Lyndhurst
in the Dilworth Historic District

SAUSSY BURBANK :: 505DESIGN

october 31, 2012



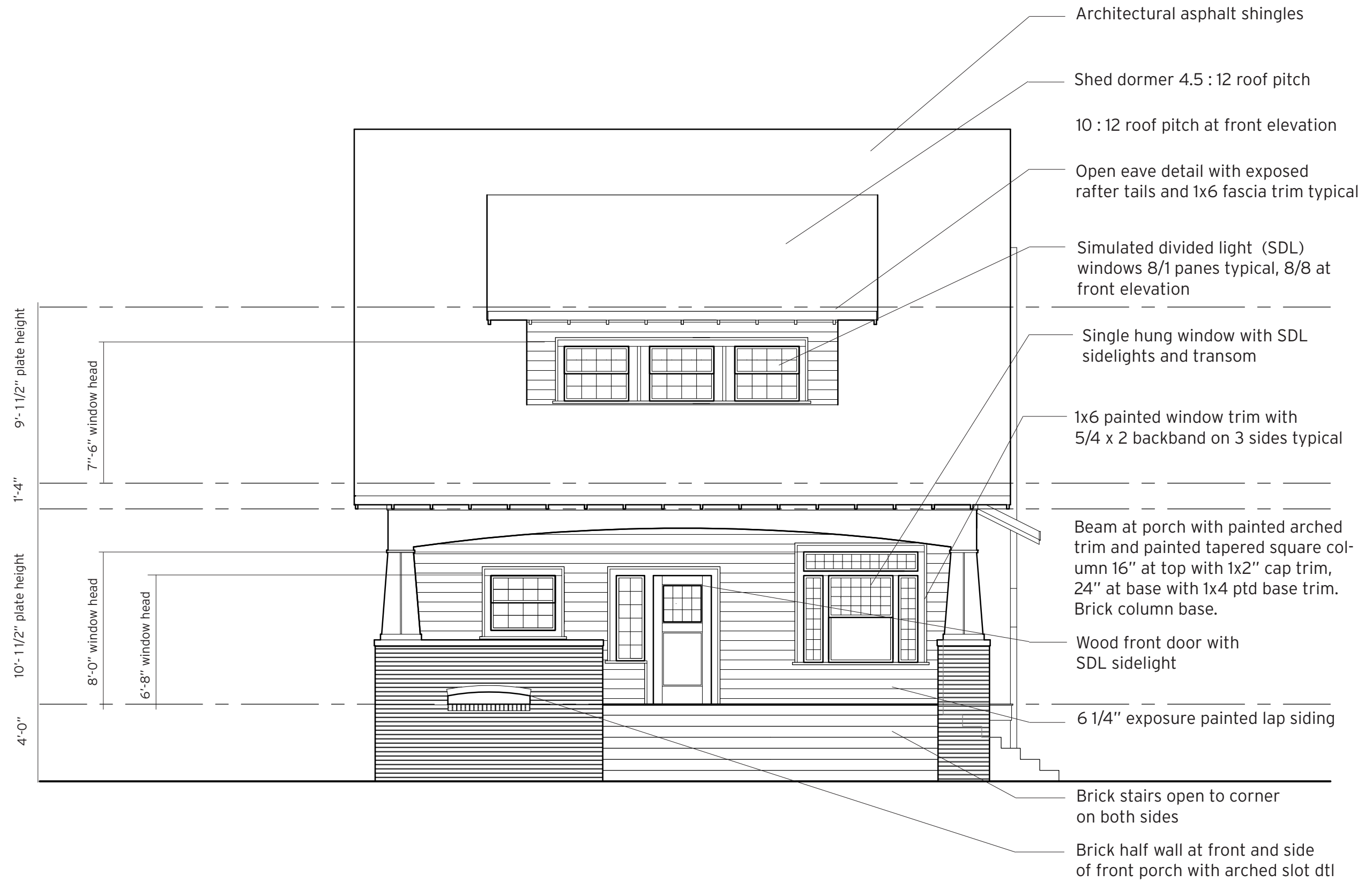
Lyndhurst Avenue Elevation

scale: 1/8" = 1'-0"

Tremont & Lyndhurst
in the Dilworth Historic District

SAUSSY BURBANK :: 505DESIGN

october 31, 2012



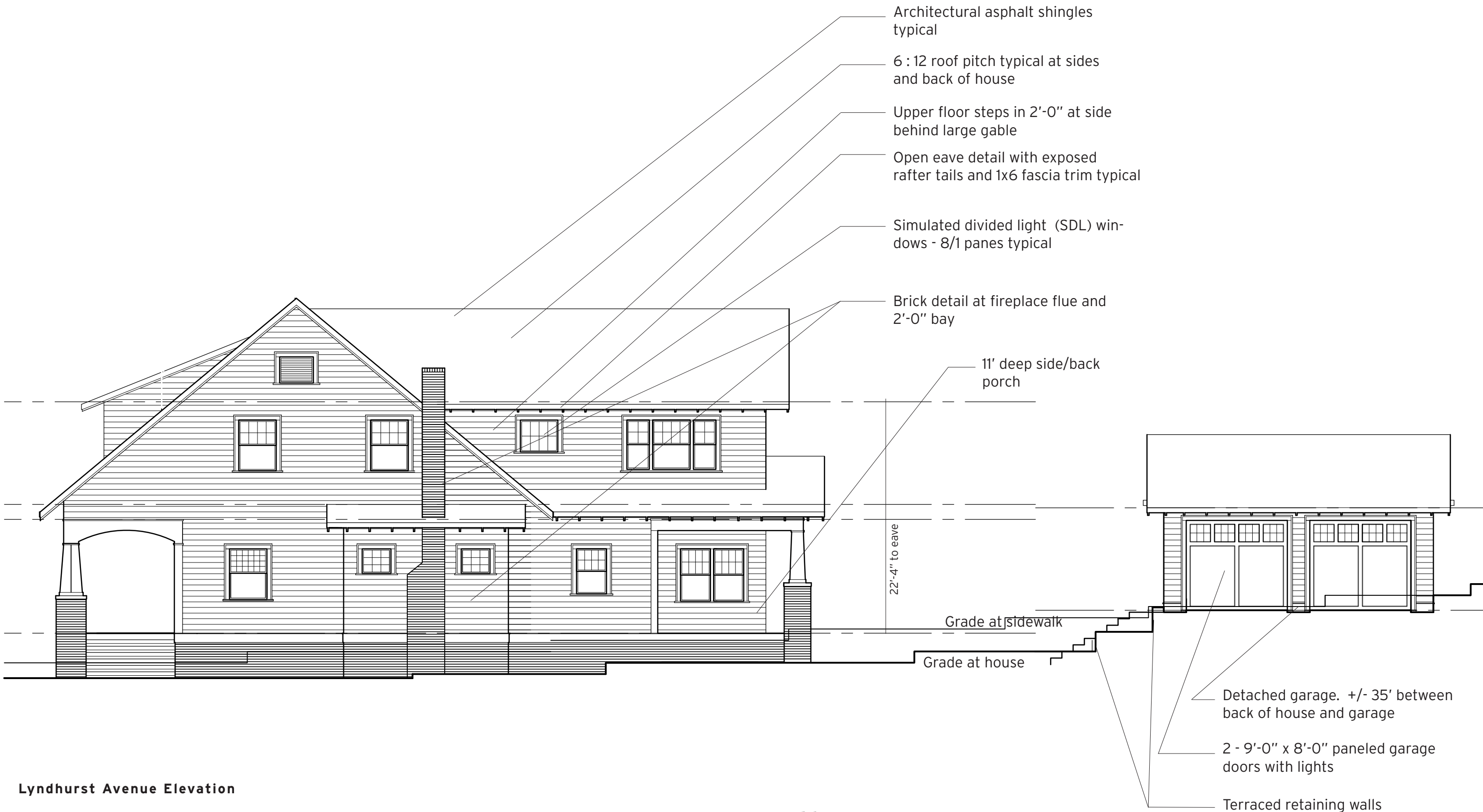
East Tremont Avenue Elevation

scale: 3/16" = 1'-0"

Tremont & Lyndhurst
in the Dilworth Historic District

SAUSSY BURBANK :: 505DESIGN

December 5, 2012



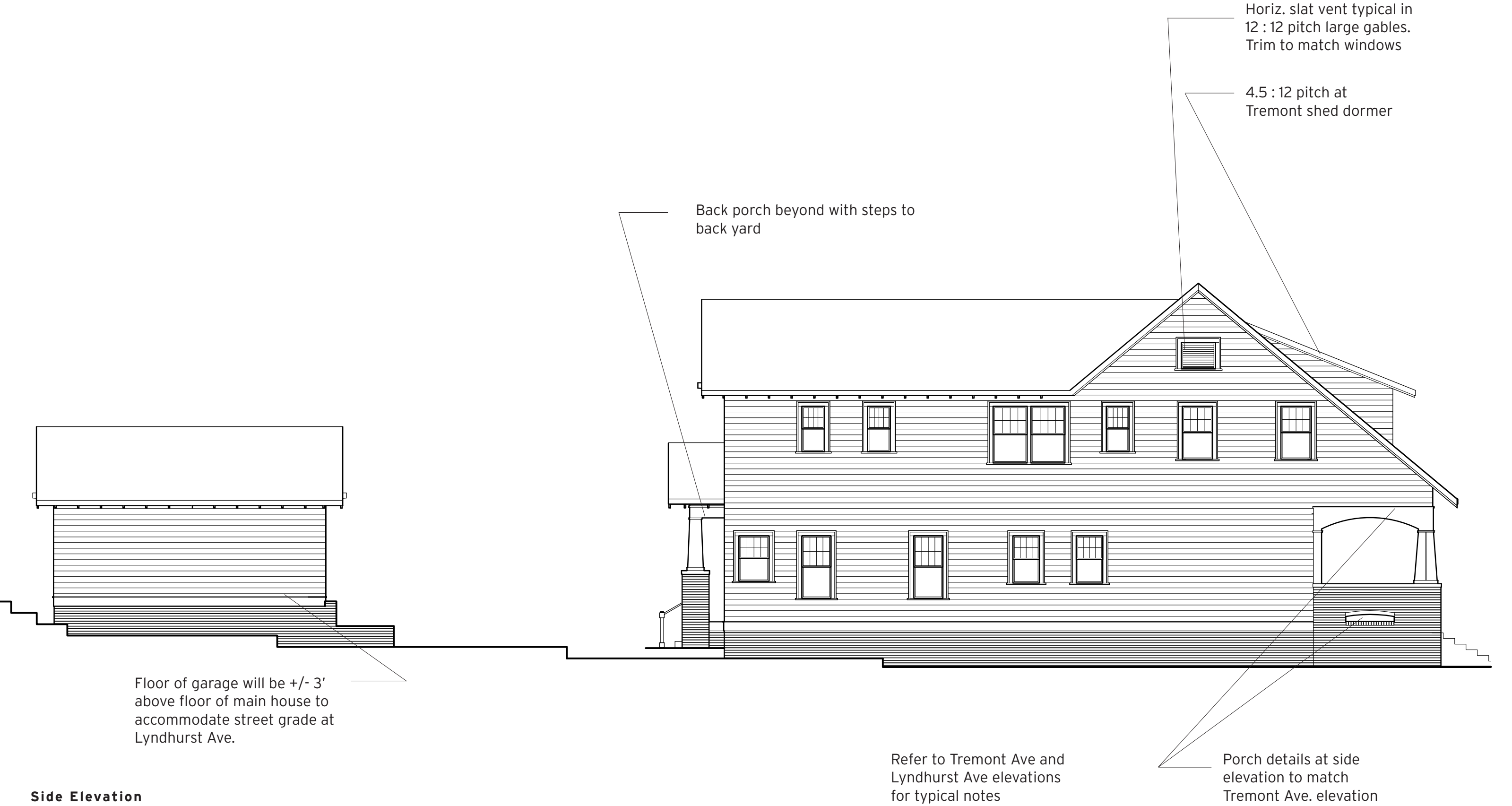
Lyndhurst Avenue Elevation

scale: 1/8" = 1'-0"

Tremont & Lyndhurst
in the Dilworth Historic District

SAUSSY BURBANK :: 505DESIGN

December 5, 2012





Back Elevation

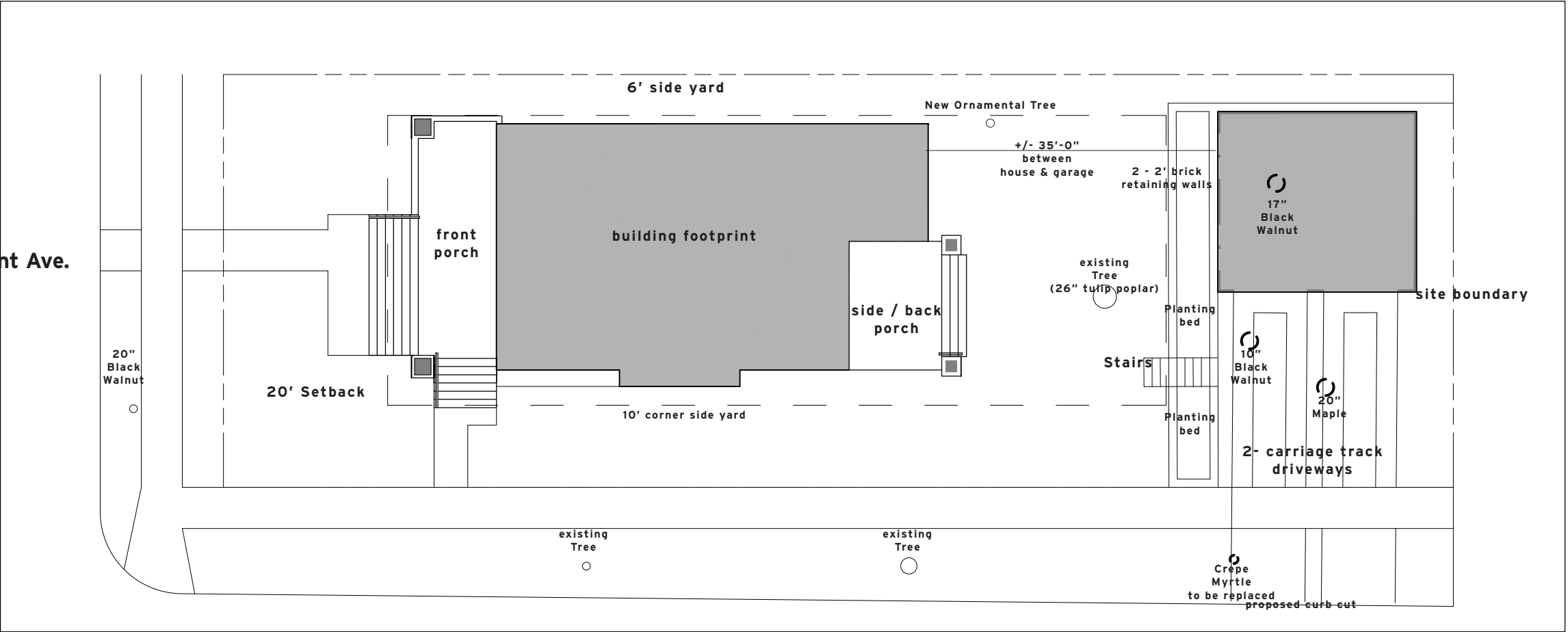
scale: 3/16" = 1'-0"

Tremont & Lyndhurst
in the Dilworth Historic District

SAUSSY BURBANK :: 505DESIGN

December 5, 2012

E. Tremont Ave.



Lyndhurst Ave.

Site Plan

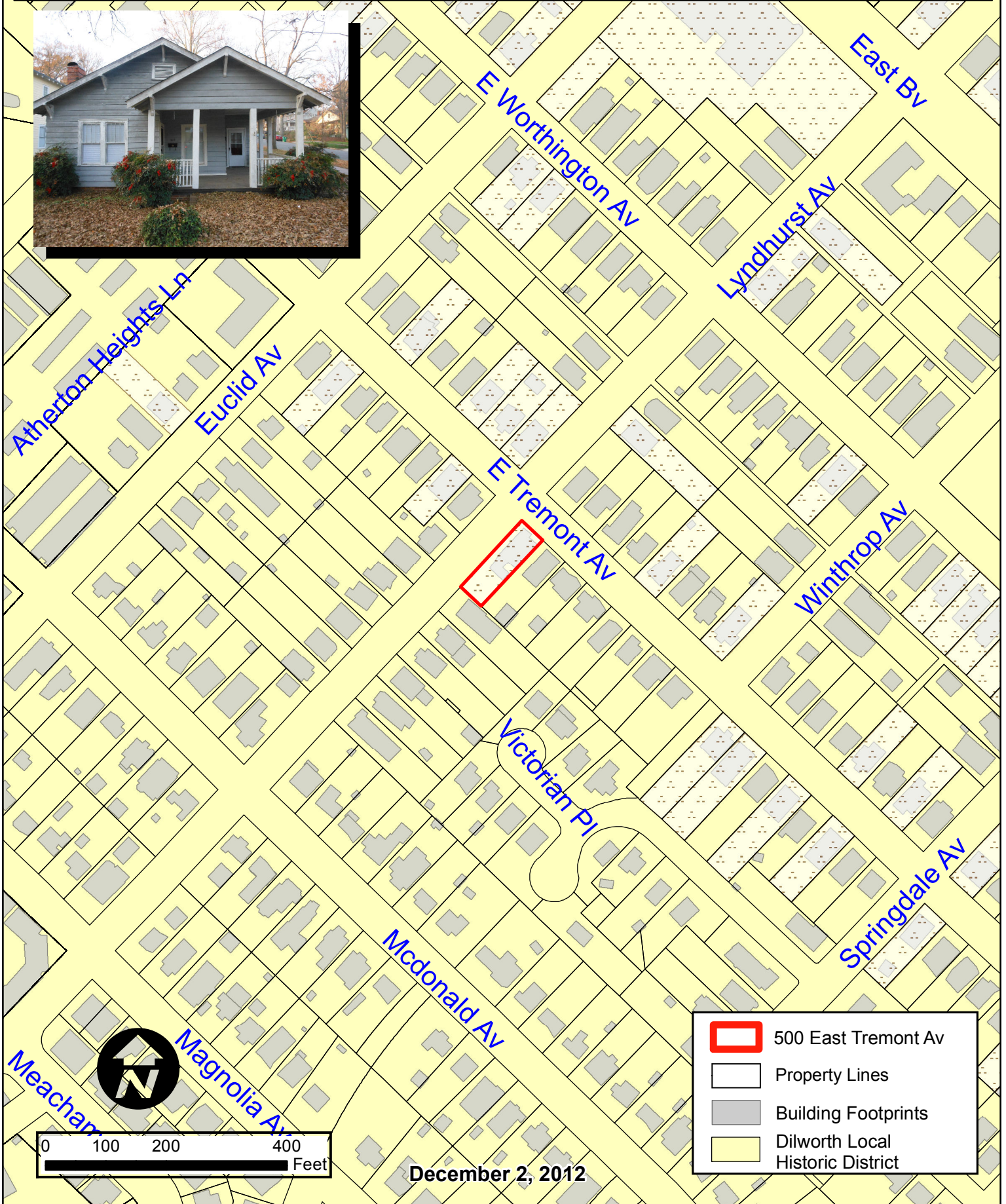
scale: 1/16" = 1'-0"

Tremont & Lyndhurst
in the Dilworth Historic District

SAUSSY BURBANK :: 505DESIGN

December 5, 2012

Charlotte Historic District Commission - Case 2012-144



- 500 East Tremont Av
- Property Lines
- Building Footprints
- Dilworth Local Historic District

December 2, 2012