

---

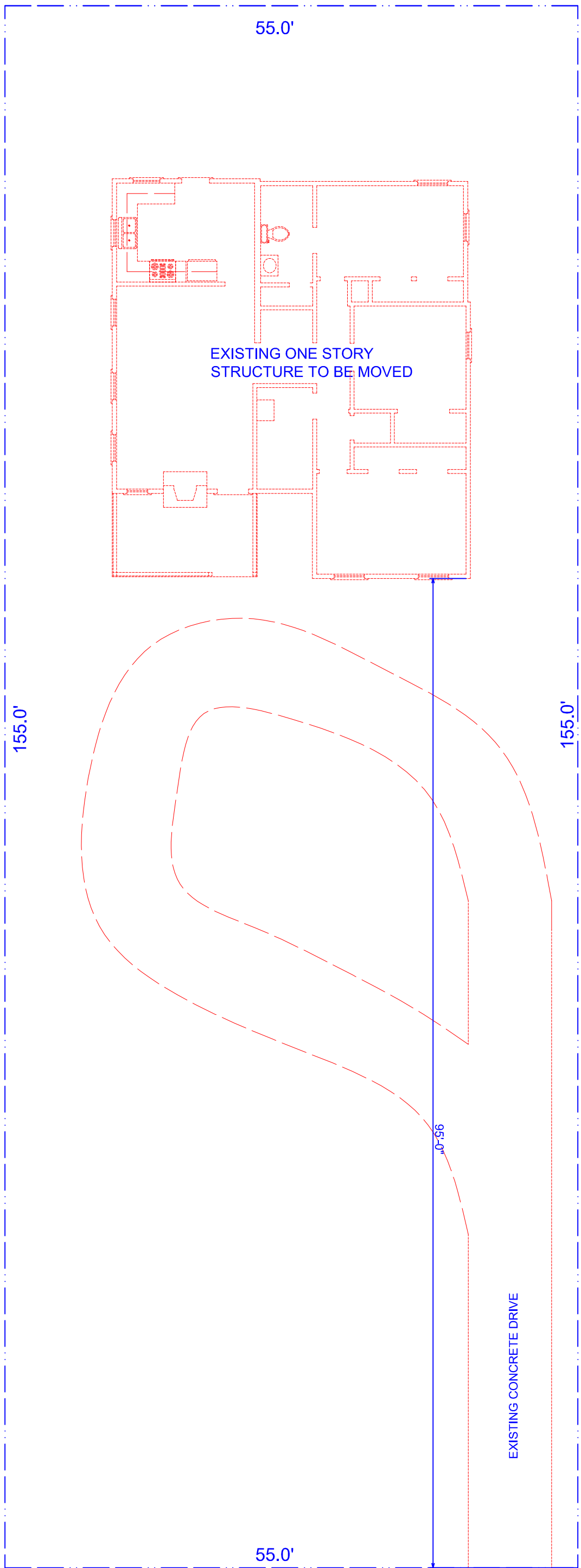
ADDRESS OF PROPERTY:	318 Walnut Avenue	<i>HDC 2012-095</i>
SUMMARY OF REQUEST:	Final Plans to Move House Forward	
OWNERS:	Queen City Historical Revitalization	
APPLICANT:	Jim McClincy	

---

**Details of Proposed Request:** This is a small c. 1932 Contributing house in the Wesley Heights neighborhood. It is located to the extreme rear of its lot with a circular drive in the front. The Commission recently approved the pulling forward of the house but nothing else. Plans now show the location of the house with an addition and a site plan.

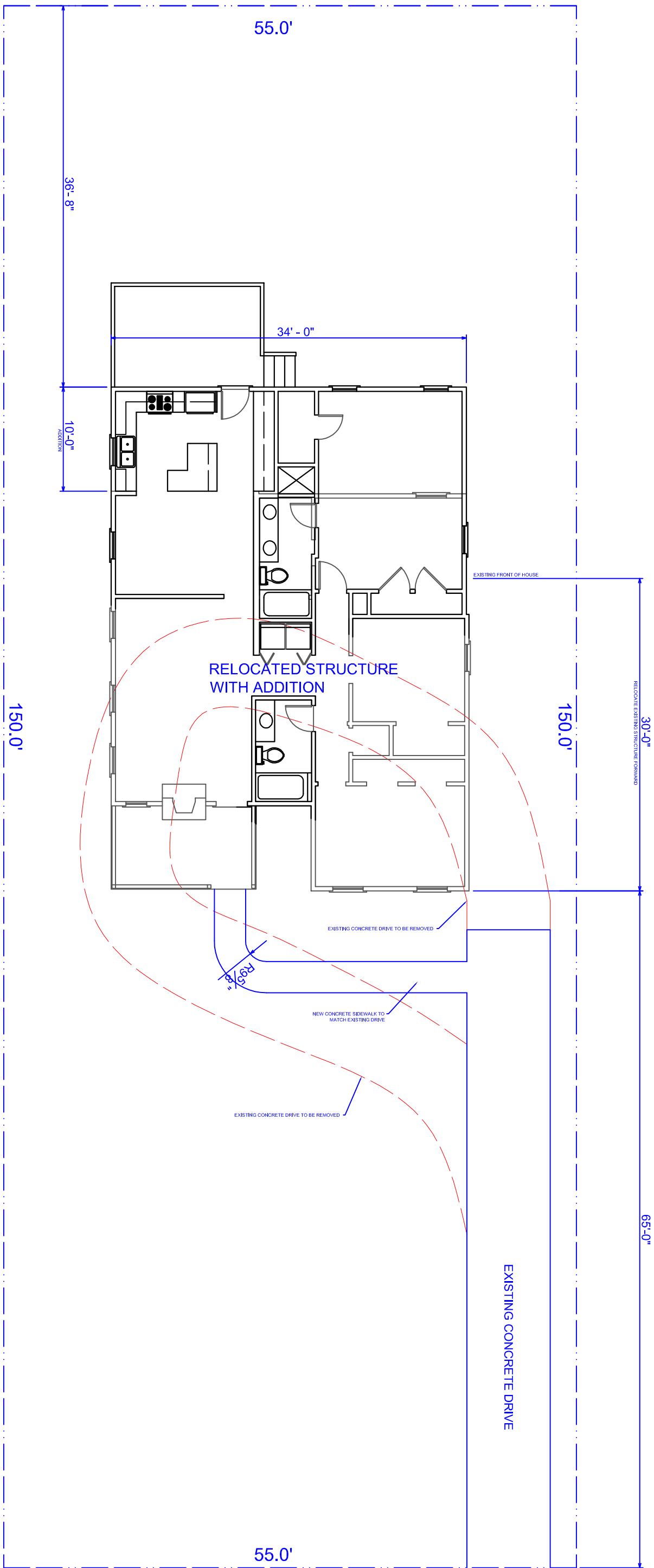
**Relevant HDC Design Guidelines:**

- Additions
- Restoration
- Setback
- Parking Areas, Paving, and Driveways



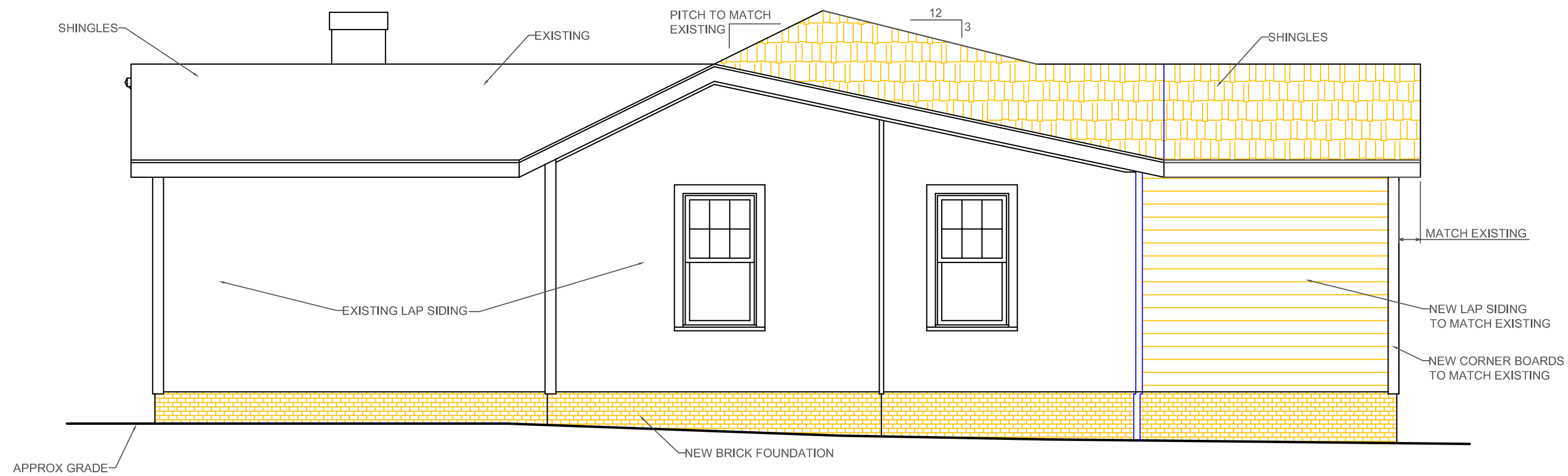
WALNUT AVE.

EXISTING SITE PLAN

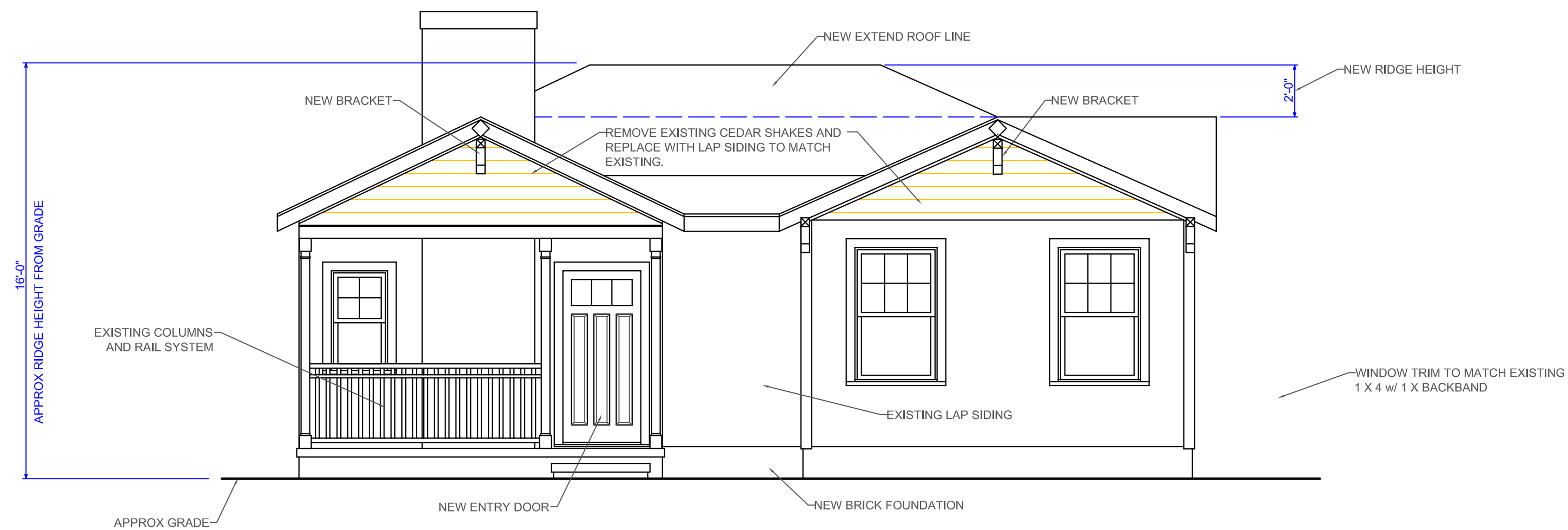


WALNUT AVE.

NEW SITE PLAN



RIGHT SIDE ELEVATION  $\frac{1}{4}'' = 1'-0''$



FRONT ELEVATION  $\frac{1}{4}'' = 1'-0''$

DRAWN BY:  
BILL J. ELMORE  
CHARLOTTE, NC

ELEVATIONS

ADDITION  
318 WALNUT AV.  
DAEDALUS PROPERTIES  
Charlotte, NC

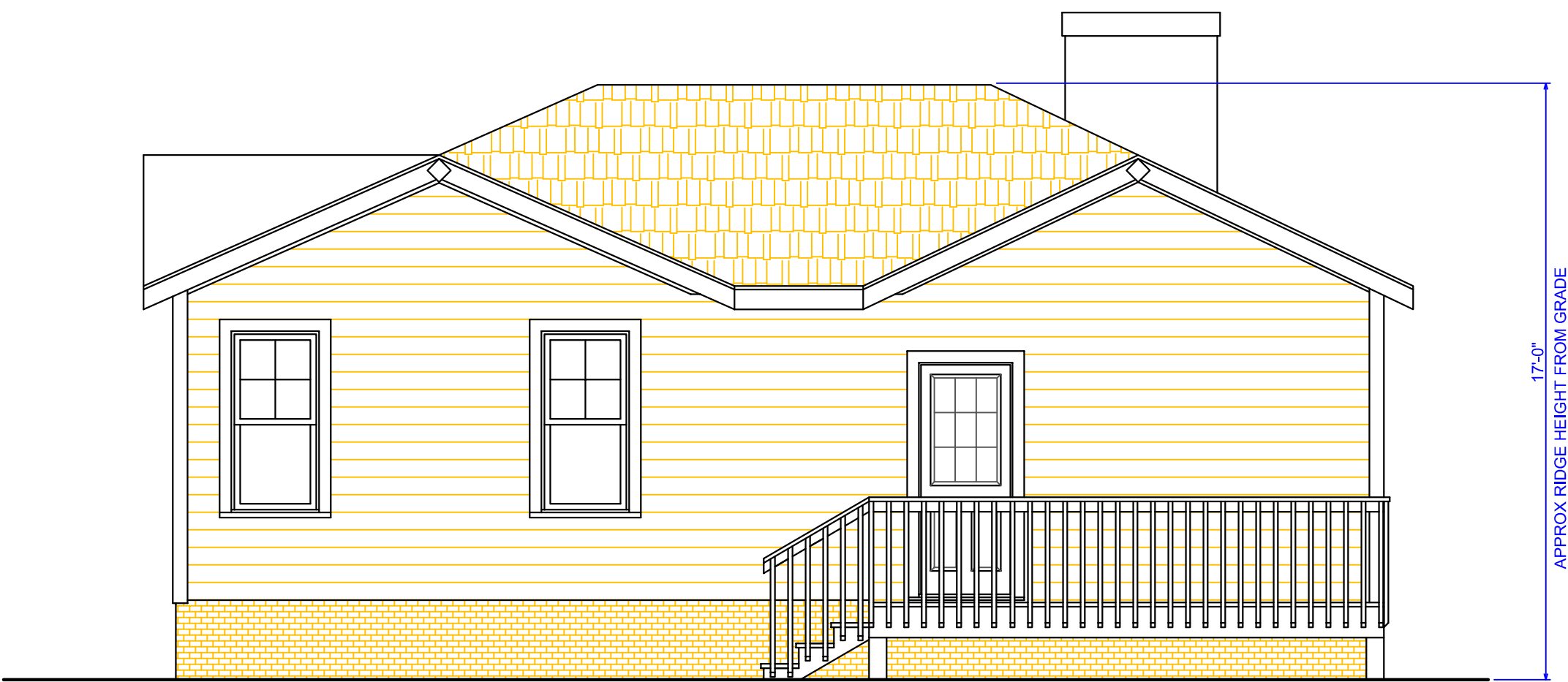
DATE:  
11-7-12

SHEET  
2

OF 2



LEFT SIDE ELEVATION  $\frac{1}{4}" = 1'-0"$



REAR ELEVATION  $\frac{1}{4}" = 1'-0"$

DRAWN BY:  
BILL J. ELMORE  
CHARLOTTE, NC

ELEVATIONS

ADDITION  
318 WALNUT AV.  
DAEDALUS PROPERTIES  
Charlotte, NC

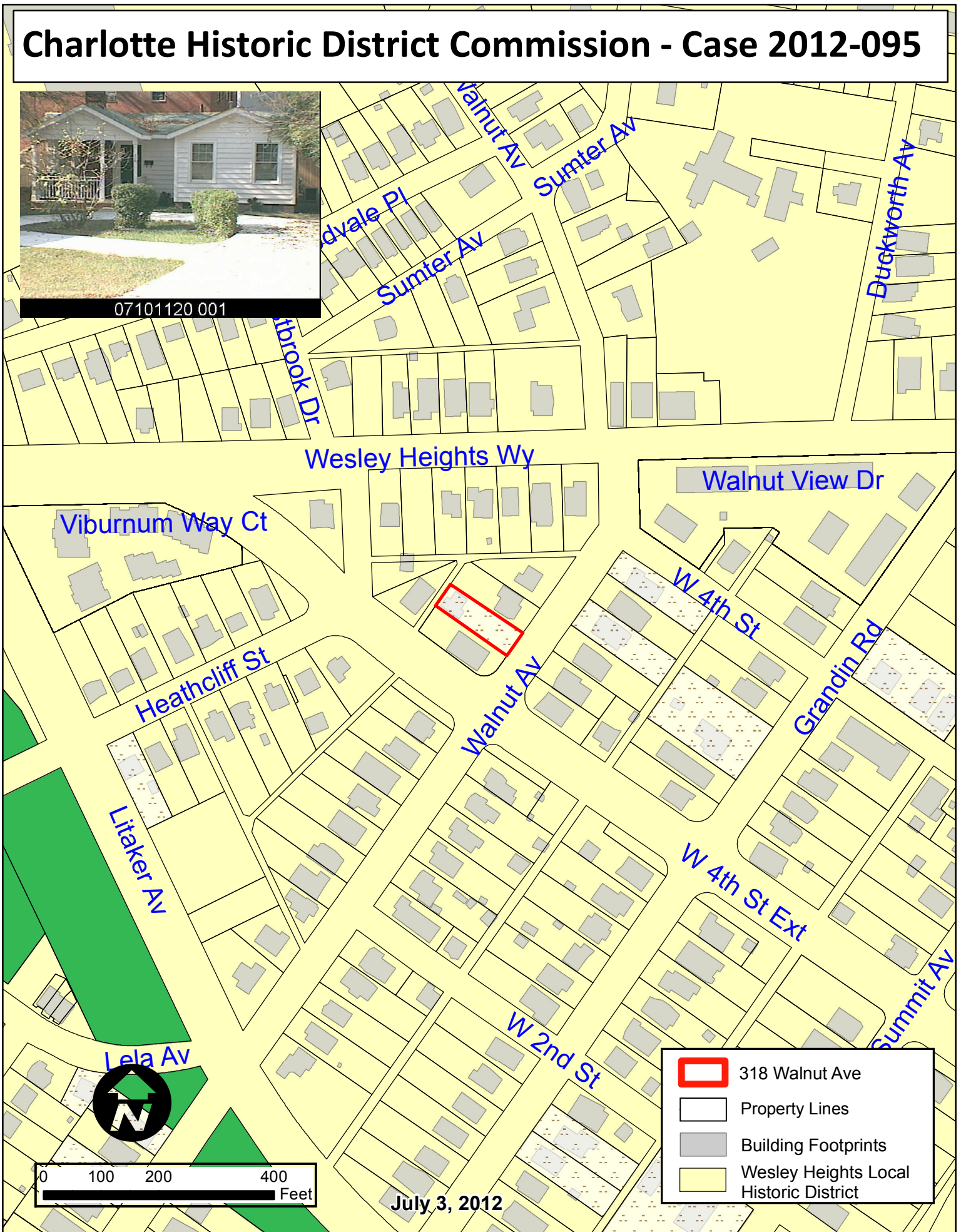
DATE:  
11-7-12

SHEET

1

OF 2

# Charlotte Historic District Commission - Case 2012-095



- 318 Walnut Ave
- Property Lines
- Building Footprints
- Wesley Heights Local Historic District

July 3, 2012