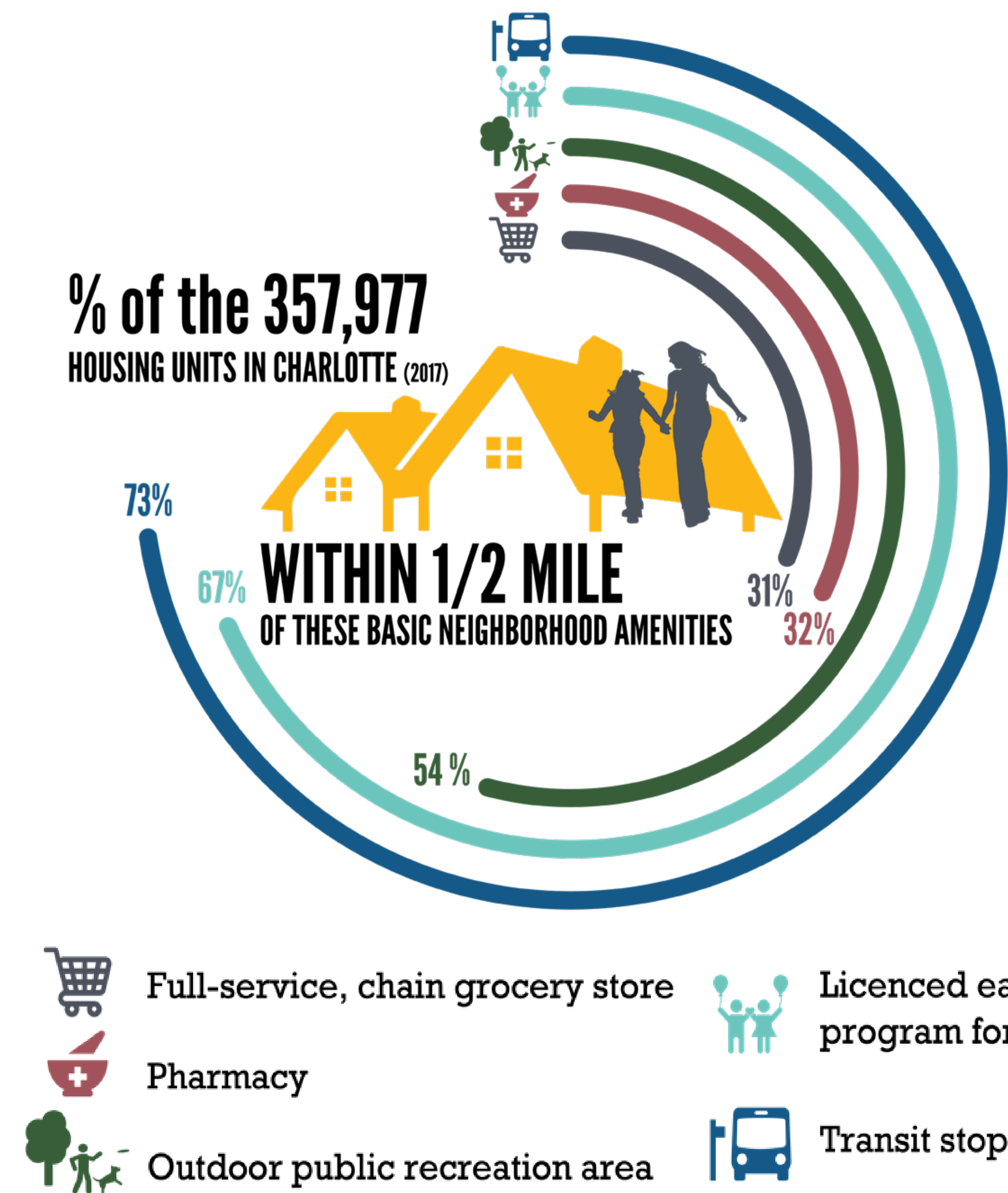


Sustainability in Charlotte

Community Workshop #1

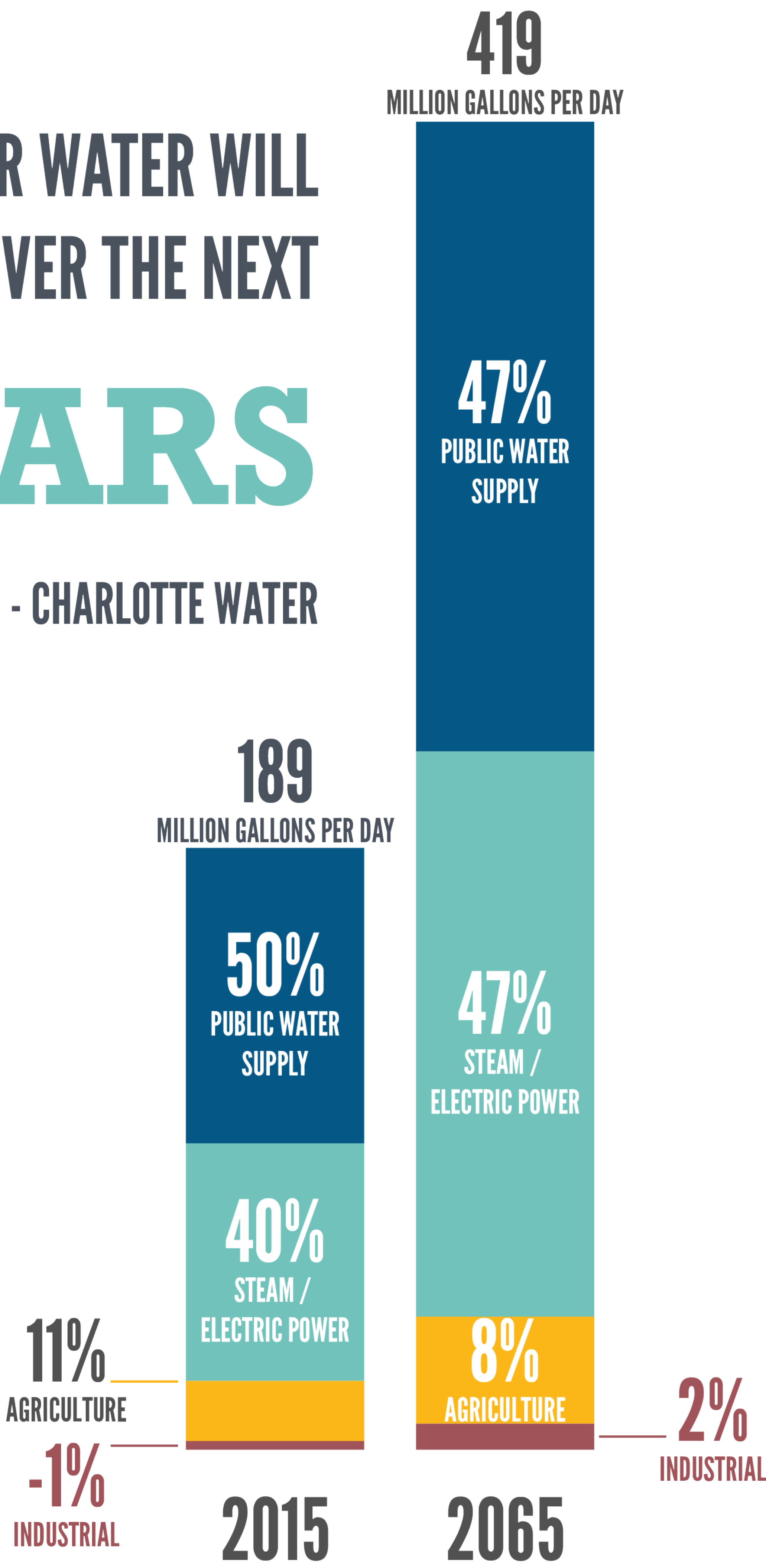
CHARLOTTE NEIGHBORHOOD WALKABILITY

Having amenities within walking distance lessens reliance on using cars for daily trips and contributes to a City's overall sustainability.



CHARLOTTE'S DEMAND FOR WATER WILL MORE THAN **DOUBLE** OVER THE NEXT 50 YEARS

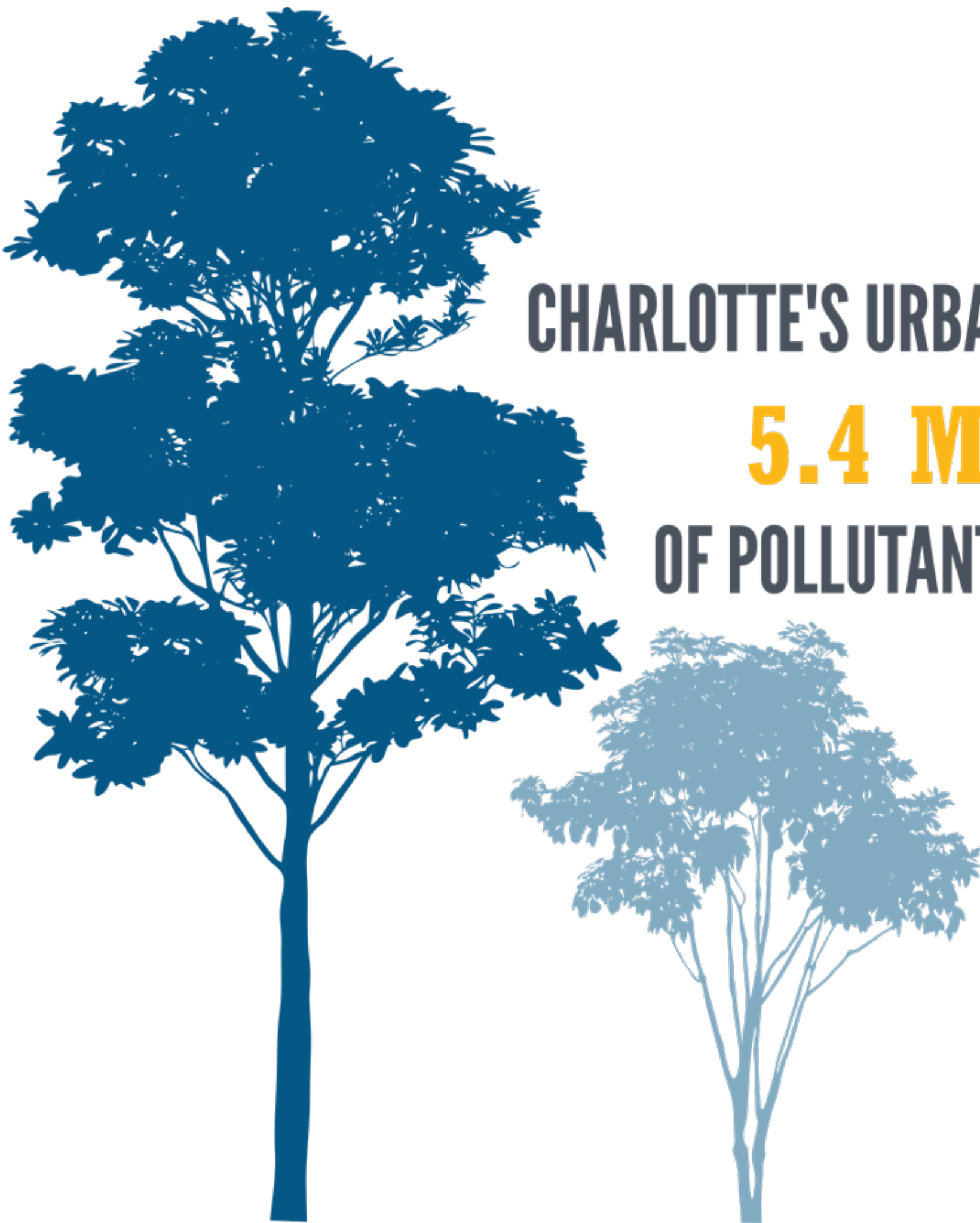
- CHARLOTTE WATER



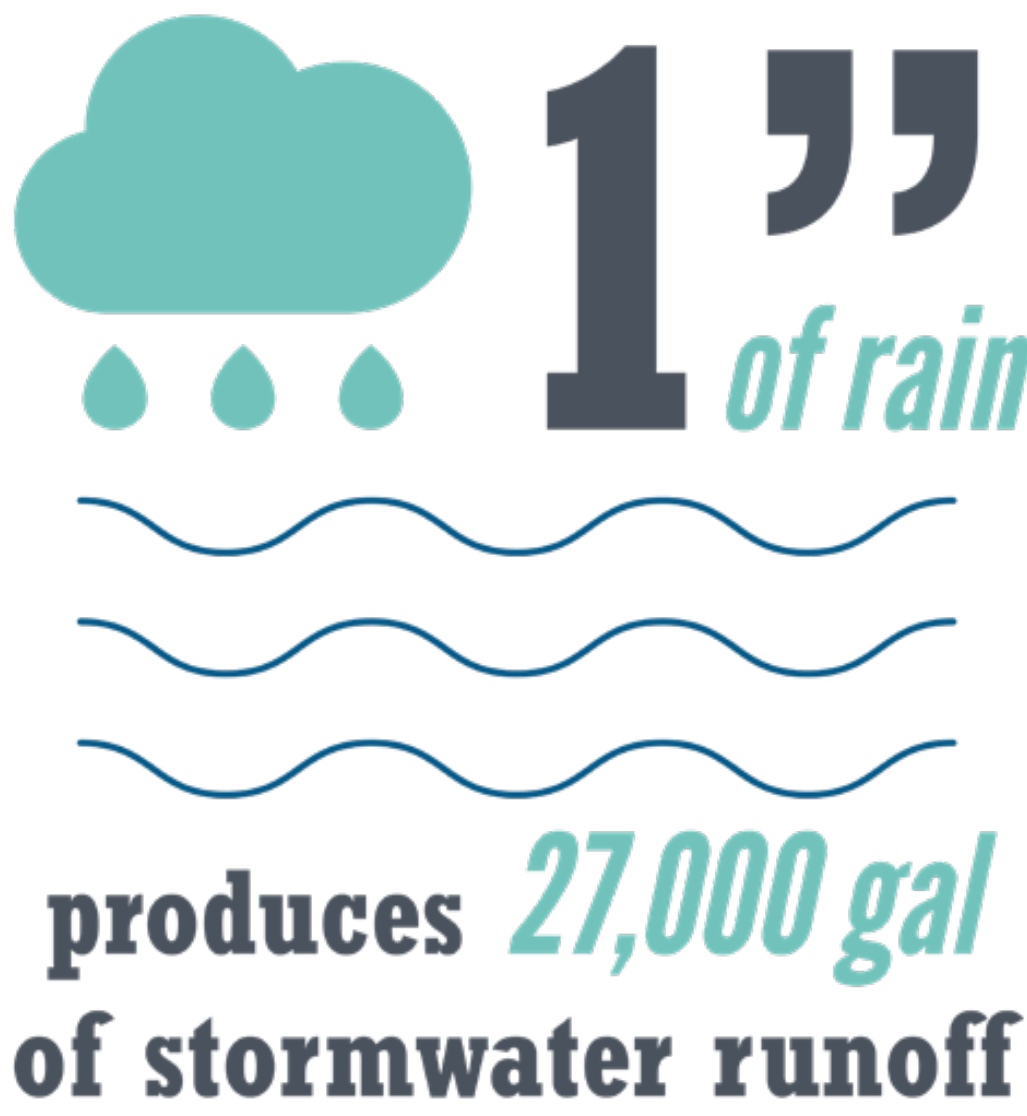
CITY-WIDE WATER NEEDS PROJECTIONS



CENTER CITY POPULATION GROWTH



CHARLOTTE'S URBAN FOREST REMOVES ALMOST **5.4 MILLION POUNDS** OF POLLUTANTS FROM THE AIR EVERY YEAR



CHARLOTTE'S TREE CANOPY ABSORBS OVER **1.2 BILLION GALLONS** OF STORMWATER

TREE CANOPY AND STORMWATER RUNOFF

A robust tree canopy has many environmental benefits, including reducing air pollution, mitigating urban heat island effect, and absorbing stormwater runoff. These benefits all contribute to a more sustainable Charlotte.

Data Source
mcmmap.org/qol/