



# Bicycle Planning & Implementation Update

Planning Commission  
June 6, 2016

Dan Gallagher, CDOT

# Status Update – 3 items

## *Charlotte's Evolving Bicycle System*

1. Charlotte Bikes
2. Cross Charlotte Trail
3. Uptown Trails  
Connection Study

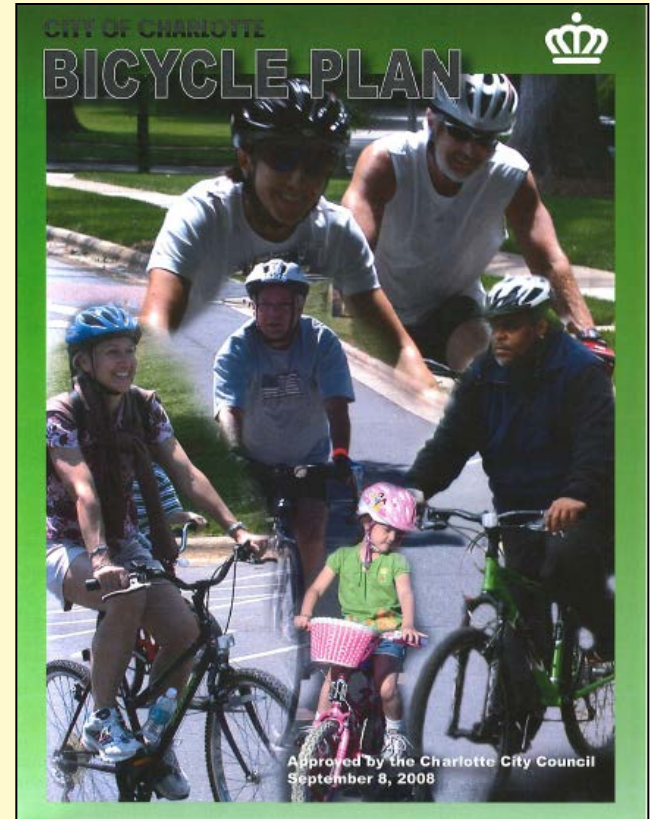




# **Charlotte Bikes Bicycle Plan Update (2016)**

# Charlotte Bikes

- 1999 Bicycle Plan
- 2008 Bicycle Plan
- 2016 update of the Bicycle Plan (Charlotte Bikes)

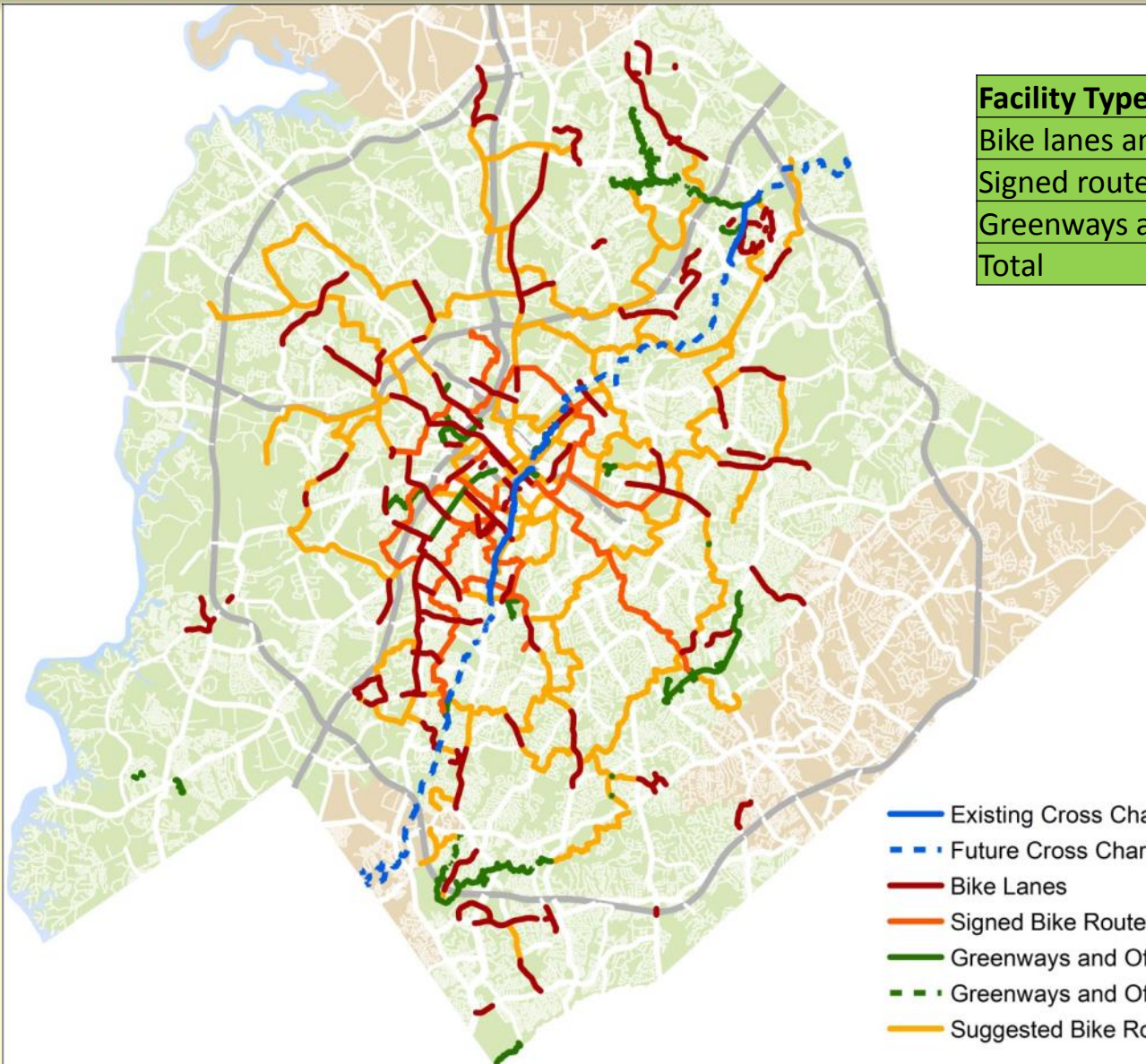


*2008 Bicycle Plan*

*Charlotte has come a long way since 1999...*



# Growing Our Bike Network



Facility Type	Miles
Bike lanes and paved shoulders (>3')	91
Signed routes	55
Greenways and off-street paths	44
Total	190

- Existing Cross Charlotte Trail
- - - Future Cross Charlotte Trail
- Bike Lanes
- Signed Bike Routes
- Greenways and Off-Street Paths - Paved
- - - Greenways and Off-Street Paths - Unpaved
- Suggested Bike Routes



# Where are we heading - accommodating more users...



*A system for all user groups and abilities...*



Charlotte Bikes will focus on moving  
us to the next level...new tools!





# Growing Our Network

- Bike lanes, **buffered bike lanes**, **cycle tracks** and **multi-use paths** on higher volume/speed streets
- Signed bike routes on lower volume/speed streets
- **Trails** and bike/ped connections
- Details matter (bike boxes, detection, bike racks)



Standard bike lane



# Buffered Bike Lanes & Cycle Tracks (PBLs)



Buffered Bike Lanes





8'-12' wide

Minimum 3' buffer

Preferably raised buffer (especially if no parking)

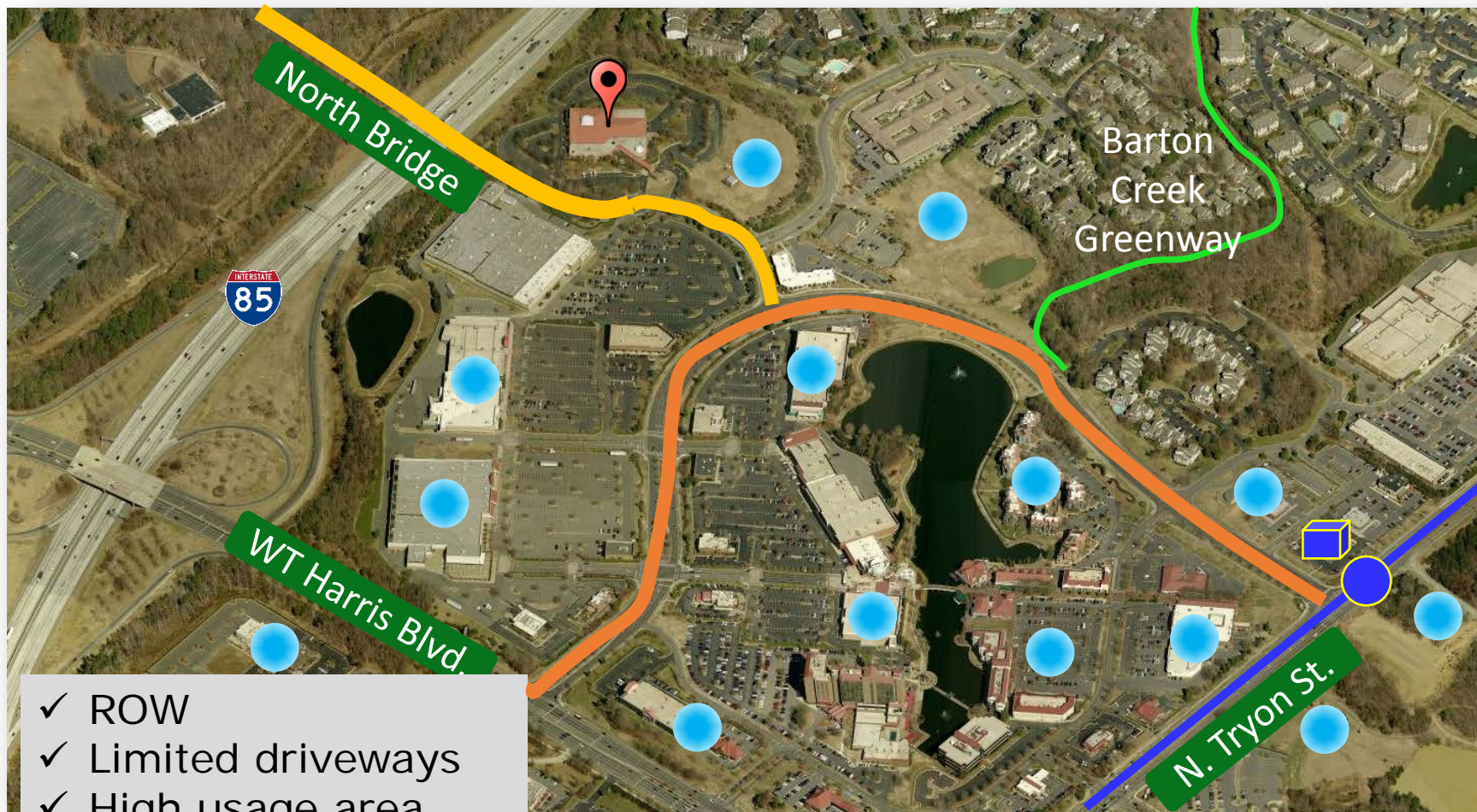
Hard to do where lots of driveways

Requires more ROW – or taking a travel lane





## JW Clay – Proposed Cycle Track

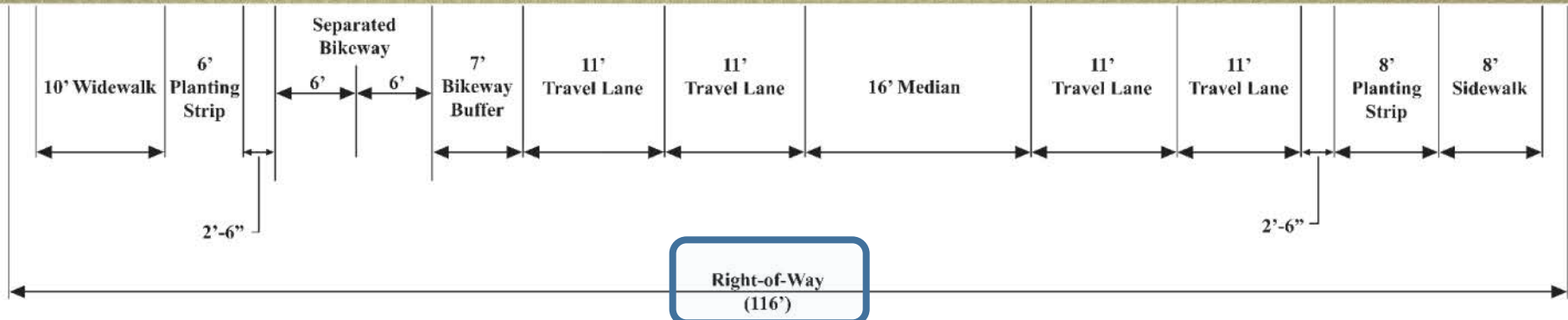


- ✓ ROW
- ✓ Limited driveways
- ✓ High usage area
- ✓ Funding - expensive

Potential (Re)Development



## Proposed Cross Section





# JW Clay – how it overlays...



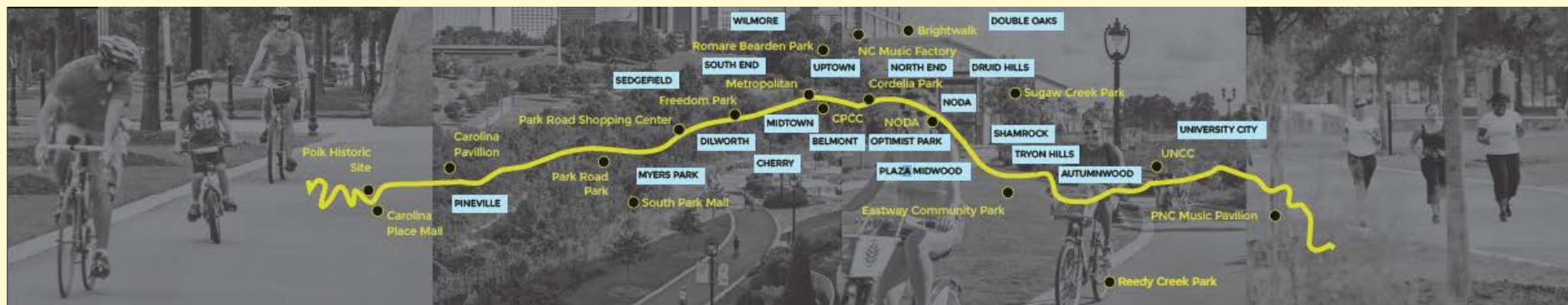
# More Trails...



Irwin Creek Greenway



Lynx Rail Path



Cross Charlotte Trail

# Next Steps for Charlotte Bikes

- Spring-Fall 2016
  - Ongoing Public Involvement
- Summer/Fall
  - Plan development
- Fall/Winter 2016
  - Plan Review and Action
    - Bicycle Advisory Committee
    - T&P Committee
    - Charlotte City Council







# CROSS CHARLOTTE TRAIL (XCLT)





**Charlotte is supporting more transportation choices than we ever have before...one way is the Cross Charlotte Trail!**



*IMAGINE...*

Being able to bike or hike from Pineville to Uptown to Cabarrus County...

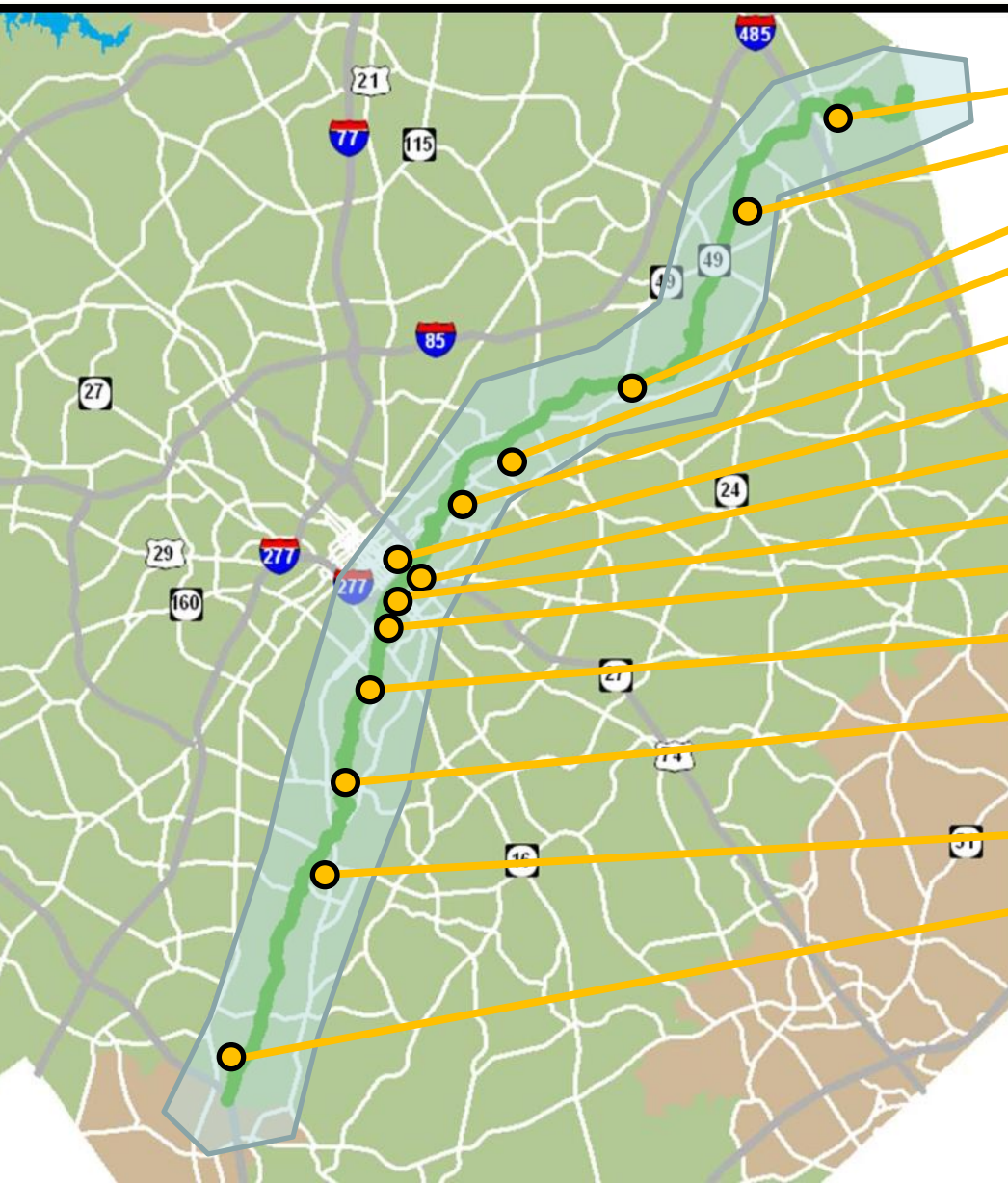
26 miles of seamlessly connected greenways and urban trails.

Separated from automobile traffic.

Dozens of destinations and neighborhoods along the way...



# Where will the XCLT go?



- PNC Music Pavillion
- UNCC
- Blue Line Extension
- NoDa district
- Cordelia Park
- Uptown Charlotte
- CPCC
- The Metropolitan
- Carolinas Medical Center
- Freedom Park
- Park Road Shopping Center
- Park Road Park
- Carolina Pavilion
- Adjacent neighborhoods
- **80,000 residents and 98,000 jobs within ½ mile**





# City and County Partnership

Imagine the possibilities...across  
Charlotte and the County!

## Why we are so interested

- economic development
- transportation
- public/private partnership
- place-making
- quality of life
- recreation
- environmental

## City

\$5M in 2014  
\$25M in 2016  
\$5M in 2018

## County

\$28M already  
\$25.5M by 2019





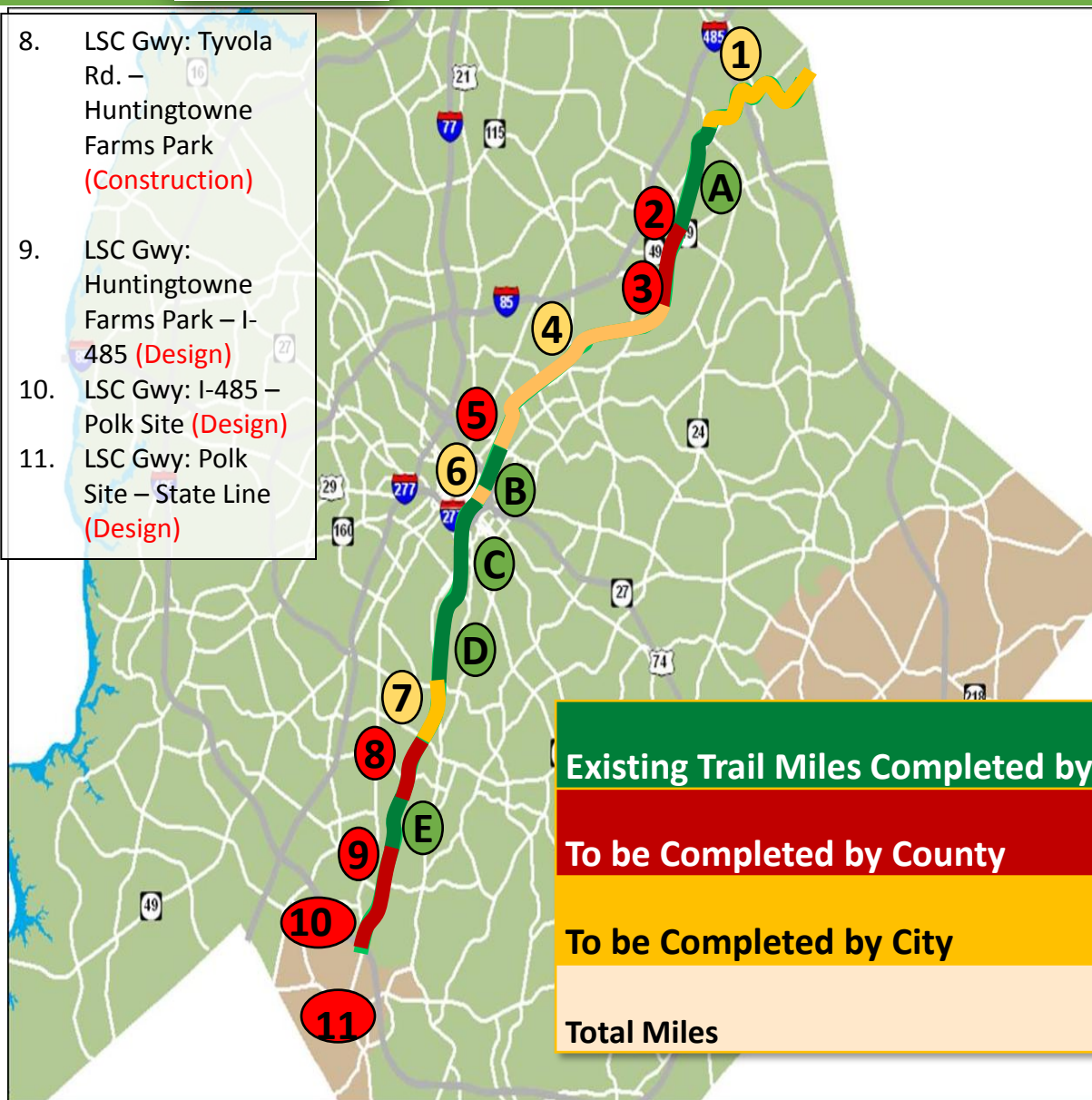
# Cross Charlotte Trail

## City and County Partnership

### Future Sections:

1. Mallard Creek Gwy: Cabarrus Co. – Toby Creek Gwy (**Master Plan**)
2. Toby Creek Gwy: Hwy 49 – Rocky River Rd. (**Construction**)
3. Toby Creek Gwy: Phase II B (**Designed**)
4. LSC Gwy: N. Tryon – Cordelia Park (**Master Plan**)
5. Cordelia Park: N. Davidson – Parkwood (**Construction**)
6. LSC Gwy: 12<sup>th</sup> St. – 7<sup>th</sup> St. (**Study**)
7. LSC Gwy: Brandywine Rd. – Tyvola Rd. (**Design**)

8. LSC Gwy: Tyvola Rd. – Huntingtowne Farms Park (**Construction**)
9. LSC Gwy: Huntingtowne Farms Park – I-485 (**Design**)
10. LSC Gwy: I-485 – Polk Site (**Design**)
11. LSC Gwy: Polk Site – State Line (**Design**)



### Existing Sections:

- A. Toby Creek Gwy: Mallard Creek Gwy – Hwy 49
- B. LSC Gwy: Cordelia Park – 12<sup>th</sup> St.
- C. LSC Gwy: 7<sup>th</sup> St. – E. Morehead St.
- D. LSC Gwy: E. Morehead St. – Brandywine Rd.
- E. LSC Gwy: Huntingtowne Farms Park

**Existing Trail Miles Completed by County**

**7.6**

**To be Completed by County**

**5.5**

**To be Completed by City**

**12.8**

**Total Miles**

**25.9**



# Cross Charlotte Trail for all users...

















# First segment (with City funding) under construction...



*Cross Charlotte Trail through Cordelia Park under construction...complete this Fall.*



# Uptown Urban Trails Connection Study

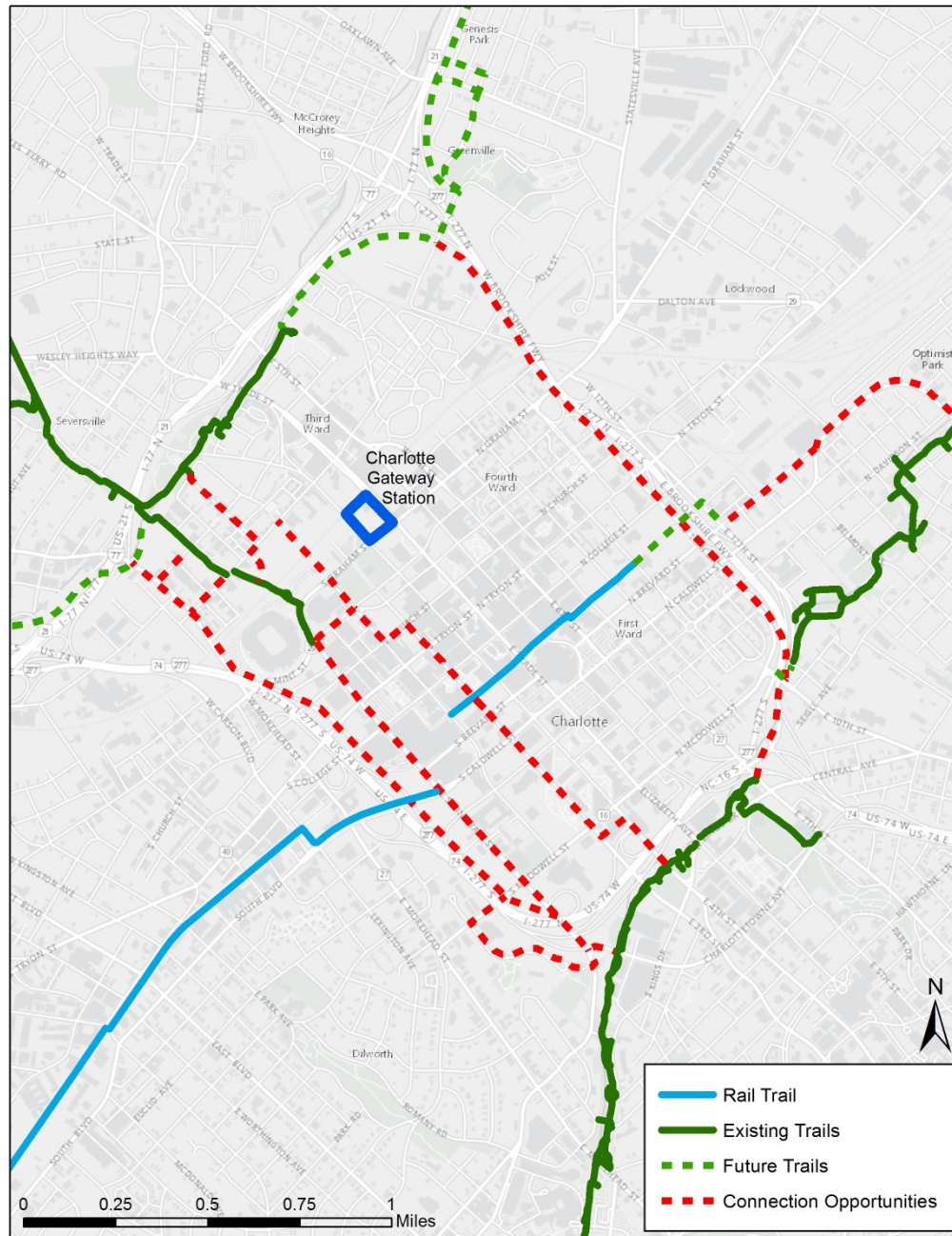




**Connecting cyclists of all ages and abilities...through Center City** - Identify options to overcome the challenges of cycling through Uptown between existing and future greenways and urban trail facilities.



## Uptown Urban Trail Connection Study



File: L:\CenterCity\ProjectFiles\Uptown\_Trail\_Connections\_Study.mxd

## Study Goal

Connecting these facilities through Uptown:

- Little Sugar Creek Greenway (Cross Charlotte Trail)
- Irwin and Stewart Creek Greenways
- Rail Trail
- Future Mooresville to Charlotte Trail

Note: Map does not show all connection opportunities for review



# Scope (High Level)

- Conduct stakeholder interviews - (June 14-16)
- Public workshop - (July 28 4-7PM @ CMGC)
- Assess corridors
- Determine trade-offs (pros/cons)
- Evaluate short and long term-options to connect trails
- 2<sup>nd</sup> Public Workshop
- Complete study by end of year





# Questions?

