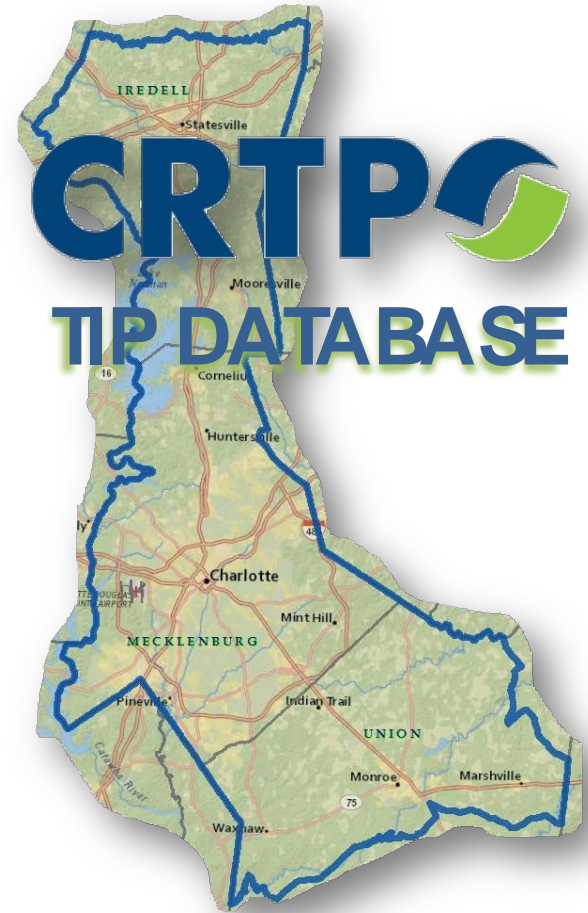
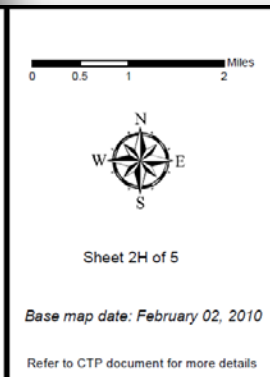
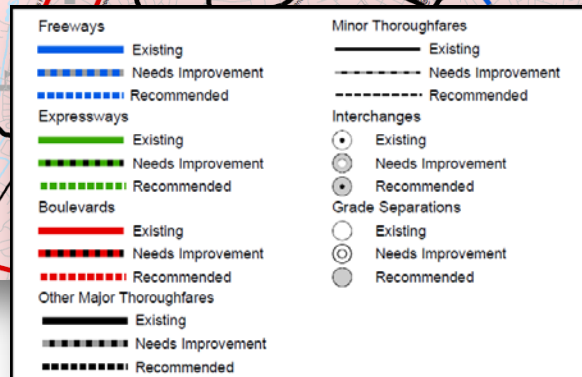
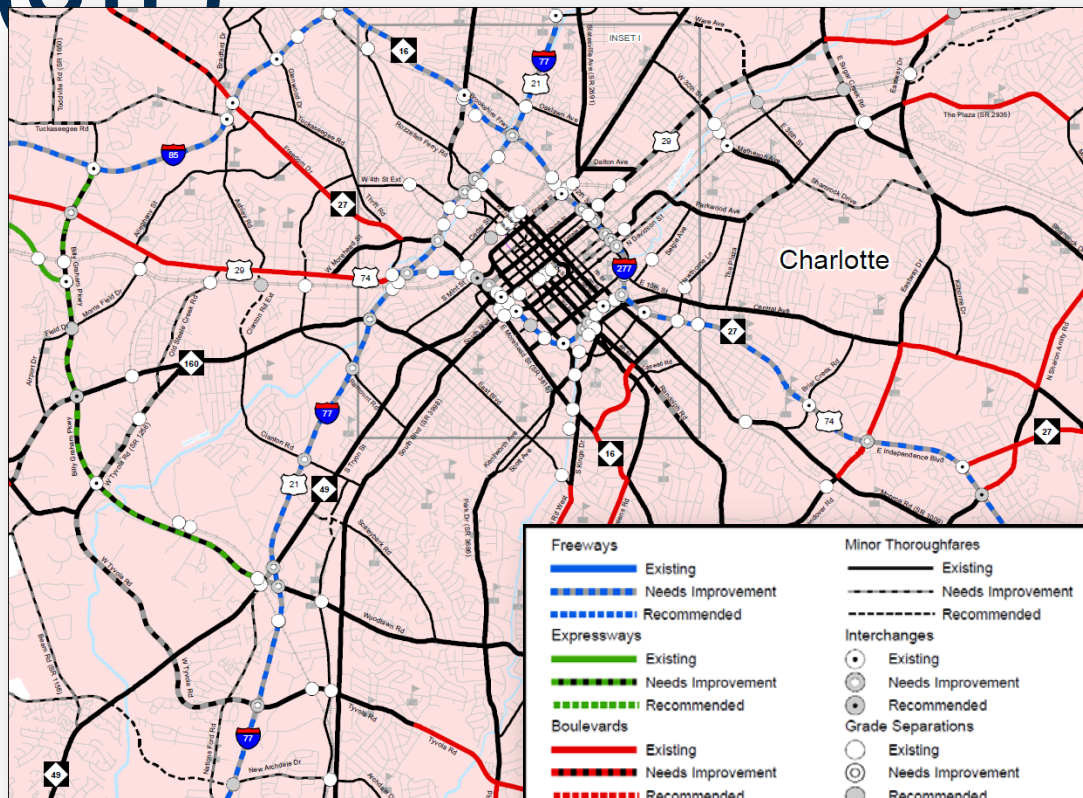
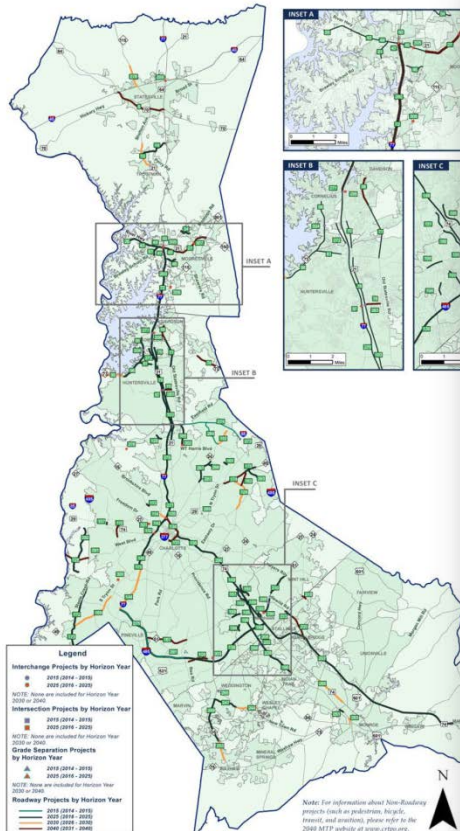


CRTPO *Transportation Improvement Program (TIP)*



Comprehensive Transportation Plan (CTP)



[illegible]

#110 - Billy Graham Parkway

This 1.2 mile widening project extends along Billy Graham Pkwy from Josh Birmingham Pkwy to I-85 in Charlotte. Improvements include widening the existing roadway from four (4) lanes to six (6) lanes and installing a median, in order to improve access to Charlotte-Douglas International Airport.



Project Quick Facts			Project Prioritization	
From	Josh Birmingham Pkwy		Tier I Scores	
To	I-85		Congestion	46
Route Number(s)	~		Safety	50
Length (miles)	1.2		Accessibility	6
Jurisdiction(s)	Charlotte		Tier II Scores	
Improvement Type	Widening		Environmental Justice	0
Facility Classification	Principal Arterial - Other		Natural Resources	3
STI Category^A	Regional Impact		Historic Resources	9
Number of Existing Travel Lanes	4		Community Resources	6
2011 Daily Traffic Volume (Vehicles per Day)	44,000		System Connectivity	0
Existing Volume to Capacity Ratio	1.1		Benefit-Cost Ratio	1
Horizon Year	2040		Total Score	121
	2012 \$ (in \$M)	Future \$ (in \$M) *		
Cost Estimate (in \$M)	24.2	67.5		

Transportation Improvement Program

(TIP)



MECKLENBURG-UNION METROPOLITAN PLANNING ORGANIZATION																
TYPE OF WORK / ESTIMATED COST IN THOUSANDS / PROJECT BREAK																
ROUTE/CITY COUNTY	ID NUMBER	LOCATION / DESCRIPTION (LENGTH)	TOTAL PRIOR YEARS COST (THOU)	COST FUNDING (THOU) SOURCE	FISCAL YEARS											
					5 YEAR WORK PROGRAM					DEVELOPMENTAL PROGRAM				UNFUNDED		
					FY 2012	FY 2013	FY 2014	FY 2015	FY 2016		FY 2017	FY 2018	FY 2019	FY 2020	FUTURE YEARS	
INTERSTATE PROJECTS																
I-77 MECKLENBURG	1-4720	I-77, I-277 (EXIT 8) TO THE SOUTH CAROLINA STATE LINE. RESURFACE WITH NOVACHIP. (9.3 MILES)	3093	17% BPFM												
PROJECT COMPLETE - GARVEE BOND FUNDING \$2.52 MILLION; PAYBACK FY 2007 - FY 2018																
I-77 MECKLENBURG	1-5317	I-77, MILE MARKER 18.1 TO MILE MARKER 13. PAVEMENT REHABILITATION. (1.6 MILES)	1800	SPM												
I-77 MECKLENBURG	1-4733	I-77/SR 5544 (WEST CATAWBA AVENUE) IN CORNELIUS. MODIFY INTERCHANGE.	14280	804% SP HP												
PLANNING/DESIGN IN PROGRESS - COORDINATE WITH I-4750																
I-77 IREDELL MECKLENBURG	1-4750	I-77, SR 5544 (WEST CATAWBA AVENUE - EXIT 28) TO I-485. WIDEN AND RECONSTRUCT ROADWAY. (23 MILES)	506500	50% SP												

State Transportation Improvement Program (STIP)



NCDOT Current STIP
November 2014

MECKLENBURG-UNION METROPOLITAN PLANNING ORGANIZATION

TYPE OF WORK / ESTIMATED COST IN THOUSANDS / PROJECT BREAK

TOTAL PROJ YEARS COST (THOU)	PRIOR COST (THOU)	FUNDING SOURCE	5 YEAR WORK PROGRAM								DEVELOPMENTAL PROGRAM				UNFUNDED FUTURE YEARS
			FY 2013	FY 2014	FY 2015	FY 2016	FY 2017	FY 2018	FY 2019	FY 2020					
3093	174	BPW	100	270	100	270	100	270	100	270					
PROJECT COMPLETE - GARVEE BOND FUNDING \$2.52 MILLION, PAYBACK FY 2007 - FY 2018															
1800		BPW					C 1800								
14280	804	SP													
PLANNING/DESIGN IN PROGRESS - COORDINATE WITH I-470															
506500	506	SP													
		SP													
		NPS													
		SP													
		NPS													
		NPS													
		SP													
		NPS													
A 1-77, SR 5544 (WEST CATAWBA AVENUE - EXIT 28) TO US 21 IN IREDELL COUNTY (EXIT 30)															
B 1-77, US 21 (EXIT 28) TO NC 119/US 21 (EXIT 42)															
C 1-77, NC 119/US 21 (EXIT 42) TO I-49															
PLANNING/DESIGN IN PROGRESS - COORDINATE WITH I-470															
8200		BPW									C 8200				
2200		BPW									C 2200				
500		BPW									C 500				

MECKLENBURG MARKER 10: PAVEMENT REHABILITATION ON RAMP ONLY (0.9 MILES)

What is the *Transportation Improvement Program* (TIP)?

- Identifies the transportation projects and strategies that CRTPO and NCDOT plan to undertake over the next seven years;
- Is updated at least every two years;
- Is realistic in terms of available funding – concept is known as *fiscal constraint*;
- Conforms with the State Implementation Plan (SIP) for air quality (CRTPO is classified as nonattainment for ozone);
- Is approved by the MPO and the governor; and
- Is incorporated directly, without change, into North Carolina's State Transportation Improvement Program (STIP).

Need TIP Project Information?

What does the project entail? Where is it?

When will construction take place?

How much will it cost?



Need TIP Project Information?

DIVISION 10

NCBOT AMENDED STIP - NOVEMBER 2014

TYPE OF WORK / ESTIMATED COST IN THOUSANDS / PROJECT BREAKS

COUNTY	ROUTE/CITY	NUMBER	LOCATION / DESCRIPTION	LENGTH	TOTAL PROJ COST (THOU)	PRIOR YEARS COST (THOU)	FUNDS	5 YEAR WORK PROGRAM					DEVELOPMENTAL PROGRAM				UNFUNDED							
								FY 2012	FY 2013	FY 2014	FY 2015	FY 2016	FY 2017	FY 2018	FY 2019	FY 2020	FUTURE YEARS							
INTERSTATE PROJECTS																								
MECKLENBURG	I-485	I-5507	I-485, I-77 SOUTH OF CHARLOTTE TO US 74 (INDEPENDENCE BOULEVARD). ADD ONE EXPRESS LANE IN EACH DIRECTION.	16.6	221000		BOND																	
							MOB																	
							MOB							R	100									
												C	134500											
													C	21600	C	21600	C	21600						
MECKLENBURG	I-485	I-5383	I-485, I-77 TO MILE MARKER 3. PAVEMENT REHABILITATION.	6.0	3200		IMPM								C	3200								
MECKLENBURG	I-485	I-5397	I-485, MILE MARKER 33 TO MILE MARKER 37. PAVEMENT REHABILITATION.	10.0	14900		IMPM										C	14900						
RURAL PROJECTS																								
MECKLENBURG	I-485	R-4902*	I-485, I-77 SOUTH OF CHARLOTTE TO REA ROAD. WIDEN TO SIX LANES.	6.6	100614	99864	CMAQ						C	750										
UNDER CONSTRUCTION - DESIGN/BUILD PROJECT																								
MECKLENBURG	I-485	R-2248*	I-485 (CHARLOTTE WESTERN OUTER LOOP), WEST OF I-77 TO I-85 NORTH. FREEWAY ON NEW LOCATION.	28.0	770381	721709	NHS						CG	5484	E	CG	5484	E	CG	5484	E			
							CMAQ								C	1500	EA							
							T								R	200	G							
							T								C	3100	G							
							A I-485, WEST OF I-77 SOUTH TO US 29-74 - COMPLETE																	
							BA I-485, NORTH OF US 29/US 74 (WILKINSON BOULEVARD) TO NORTH OF I-85 - COMPLETE																	
							BB I-485, NORTH OF I-85 TO NORTH OF NC 27 - COMPLETE																	
							C I-485, NORTH OF NC 27 (MOUNT HOLLY ROAD) TO EAST OF SR 2042 (OAKDALE ROAD) - COMPLETE																	
							D I-485, EAST OF SR 2042 (OAKDALE ROAD) TO EAST OF NC 115 (OLD STATESVILLE ROAD) - COMPLETE																	
							E I-485, EAST OF NC 115 (OLD STATESVILLE ROAD) TO I-85 NORTH - UNDER CONSTRUCTION AS DESIGN-BUILD PROJECT																	
EA ITS FOR R-2248 E																								
EB EDINMEADOW DRIVE NEPA STUDY																								
F I-485, WEST OF I-77 TO ARROWOOD ROAD-BROWN GRIER ROAD - COMPLETE																								
G I-485 INTERCHANGE WITH SR 2042 (OAKDALE ROAD)																								
H I-485 INTERCHANGE WITH SR 1148 (GARRISON ROAD) - UNDER CONSTRUCTION																								
GARVEE BOND FUNDING \$50 MILLION; CONSTRUCTION - PAYBACK FY 2010 - FY 2021																								
MECKLENBURG	I-485	R-0211*	I-485 (CHARLOTTE SOUTHERN OUTER LOOP), WEST OF I-77 TO US 74. MULTI-LANE FREEWAY ON NEW LOCATION.	16.6	276431	256328	NHS												R	6100	EC			
							NHS															M	103	EC
							NHS																C	13900
EC I-485/SR 3468 (WEDDINGTON ROAD). CONSTRUCT INTERCHANGE																								
PART COMPLETE - REMAINDER UNFUNDED LOOP PROJECT																								
MECKLENBURG	I-485	R-2123*	I-485 (CHARLOTTE EASTERN OUTER LOOP), US 74 EAST (INDEPENDENCE BOULEVARD) TO I-85 NORTH. CONSTRUCT FREEWAY ON NEW LOCATION.	18.8	341488	297016	CMAQ						CG	5484	CE	C	600	CG						
							NHP								CG	5484	CE	CG	5484	CE	CG	5484	CE	
							CE								I-485/I-85 INTERCHANGE									
CG SEPARATE ITS CONTRACT FOR R-2123 CE																								
PART COMPLETE - GARVEE BOND FUNDING \$50 MILLION; CONSTRUCTION - PAYBACK FY 2010 - FY 2021																								

* INDICATES INTRASTATE PROJECT

COST AND SCHEDULES ARE PRELIMINARY AND SUBJECT TO
SIGNIFICANT CHANGE AS MORE INFORMATION BECOMES AVAILABLE

CRTPO 2012-2018 TIP Database



CRTPO has developed a searchable on-line database to more effectively convey current mapping and project information for proposed TIP projects.

<http://tip.crtpo.org>