



CHARLOTTE
CHARLOTTE-MECKLENBURG
PLANNING

AREA PLAN POLICY ASSESSMENT

Planning Commission Work Session

January 6, 2014



- Project Background
- Process and Schedule

- Internal Assessment Results
- SWOT 2.0 Exercise

- Next Steps and Questions



Why asses our plans NOW?

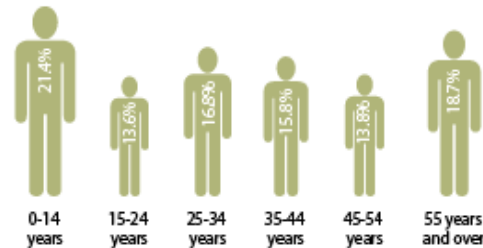
Changes in Our Community - Population

Year	City of Charlotte	Mecklenburg County	Charlotte MSA
2012	772,627	966,160	1,857,624
2011	750,124	938,020	1,812,317
2010	731,424	919,628	1,758,038
2009	716,874	935,304	1,725,759
2008	695,995	902,803	1,676,495
2007	664,342	871,432	1,626,694
2006	648,139	850,178	1,594,799
2005	632,760	820,635	1,545,348
2004	614,330	790,809	1,500,338
2003	594,176	770,299	1,453,816
2002	579,684	746,427	1,411,472
2001	551,645	720,490	1,370,361
2000	540,828	695,454	1,330,448
1990	395,934	511,433	1,024,096
1980	315,473	404,270	855,538
1970	241,420	354,656	741,118
1960	201,564	272,111	426,549

Percent of Population by Age Group

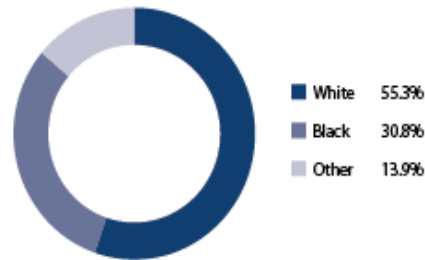
Mecklenburg County 2010

Source: 2010 U.S. Census ESRI



Racial Composition

Mecklenburg County 2010



Population Rankings

City of Charlotte U.S. (population) rank — 17
 MSA U.S. (population) rank — 34
 Source: U.S. Census, 2010, Charlotte Chamber Population Estimates

Mecklenburg County Population Projections

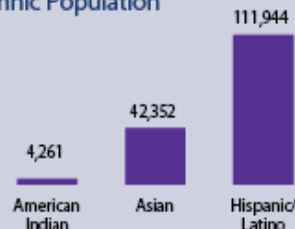
(Growth rate is projected at 3.0 percent per year)



Median Age:

Males: 32.9
 Females: 34.9

Ethnic Population



Source: U.S. Census, 2010 Census ESRI

Charlotte is **changing**

Achieving our vision is more
Intentional

Rethinking our implementation
 tool Zoning Ordinance

Project Goal: To assess the effectiveness of our existing land use policy structure and to develop recommendations to strengthen our policy development processes, products and implementation tools.

Project Work Flow

1

ASSESS

Assess and confirm issues with internal and external stakeholders.



2

ANALYZE

Analyze information to develop goals for focus areas.



3

ACT

Develop a plan of action to address short, medium and long terms policy goals.

Project Focus Areas

PROCESS

Broaden our toolbox for developing area plans. Build upon recent process enhancements and incorporate new ideas from other communities.

PRODUCT

Restructure our current format and content. Develop new print and web-based tools to communicate land use policies.

IMPLEMENTATION

Strengthen linkages between area plan vision and implementation tools. Develop new processes and regulatory tools to clearly articulate policy implementation process.

Assessment



- **Intradepartmental Assessment** July – October 2013
- **Interdepartmental Interviews** October 2013
- Planning Commission Input January 2014
- Community Workshop March – May 2014

Analysis



- **Research Land Use Policy in Other Cities** July 2013 – March 2014
- **Review /Summarize Current Land Use Policies** July 2013 – March 2014
- Summarize Assessment Findings March - April 2014

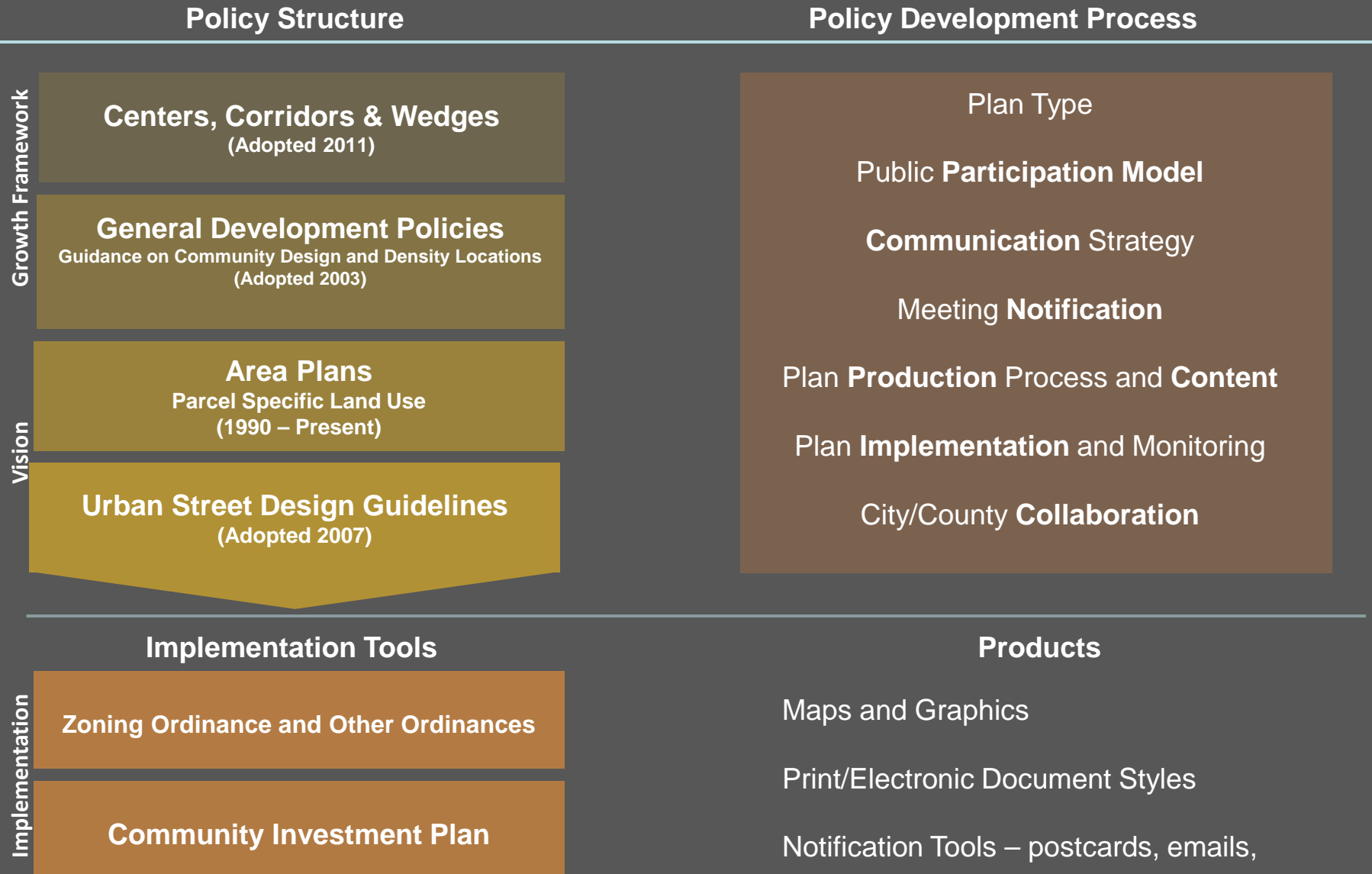
Act



- Develop Report of Findings and Approaches April 2014
- Share Findings and Possible Approaches May – June 2014
- Begin Discussions about Approaches July 2014

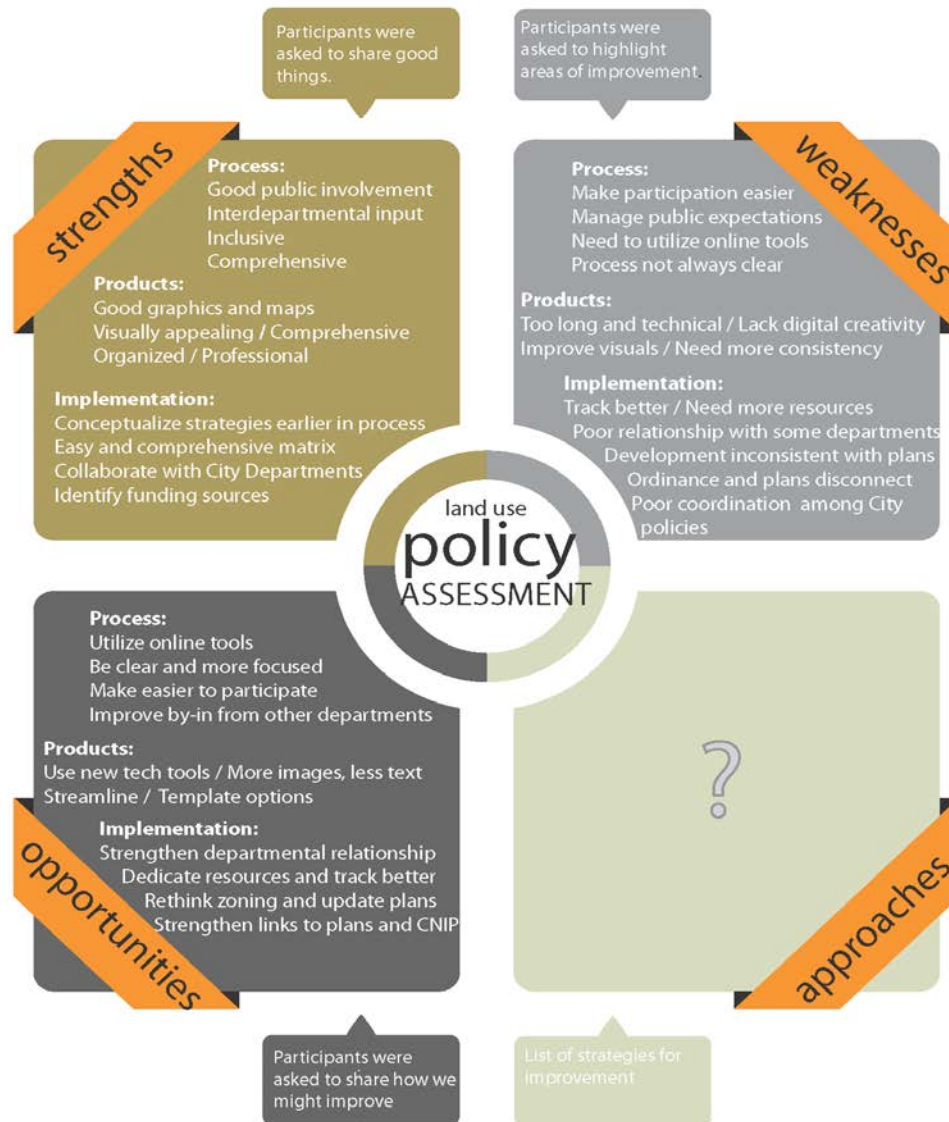


What did we ASK stakeholders to consider?



LAND USE POLICY ASSESSMENT THEMES

Summary of the Internal Assessment Process



Summary of
Feedback
from
Planning
Staff and
Our
Partners

Strength Weakness Opportunities - *No Threats*

Instructions

- Everyone should have received THREE different colors of post-it notes.
- Write ONE thought or comment on EACH Post-It.
- Comments should be about our:
 - Process
 - Products
 - Implementation
- Place each of your Post-It notes on the wall.

Time

- 45 Minutes

Next Steps

- **Complete project branding**
February 2014
- **Complete external assessment**
March 2014
- **Complete research and finalize Assessment Report**
April 2014



Charlotte-Mecklenburg Planning Department

Believe in Your Ideas.

RESEARCH CHALLENGE FOR THE LAND USE POLICY ASSESSMENT PROJECT

Join us in conducting research on land use policy frameworks from other cities around the USA. This information will help us to develop new strategies for our land use policy development processes, products and implementation.

- » **How do I participate?**
Pick one research partner from Planning Department staff.
Pick a city of similar size and/or with similar area plans/land use policy structure.
Email your team and research subject to adosborne@charlottenc.gov.
- » **What should my research include?**
Your research should include new, different and/or more efficient processes for developing, communicating and implementing area plans/land use policy. It can include everything from community engagement tools to funding mechanisms for implementation.
- » **How do I WIN?**
Share your research in a 15 minute presentation in the style of your choice. It MUST include a flow chart or graphic representation of the relationship between the overarching land use policies and/or implementation tools.
Presentations will take place on October 30, 2013.
Each presentation can receive up to 100 points:
50 points for organization of content and clarity of message;
25 points for presentation innovation and originality; and
25 points for illustration of some applicability to Charlotte.

Prize: Keurig K-Cup Variety Pack


CHARLOTTE

Questions or Comments?
Contact Alysia Osborne, Planning Coordinator
704.336.3910
adosborne@charlottenc.gov

