



CHARLOTTE™

# 2011 Annexation

**Presented to  
Charlotte City Council  
June 14, 2010**

Jonathan Wells,  
Charlotte-Mecklenburg  
Planning Department



# 2011 Annexation

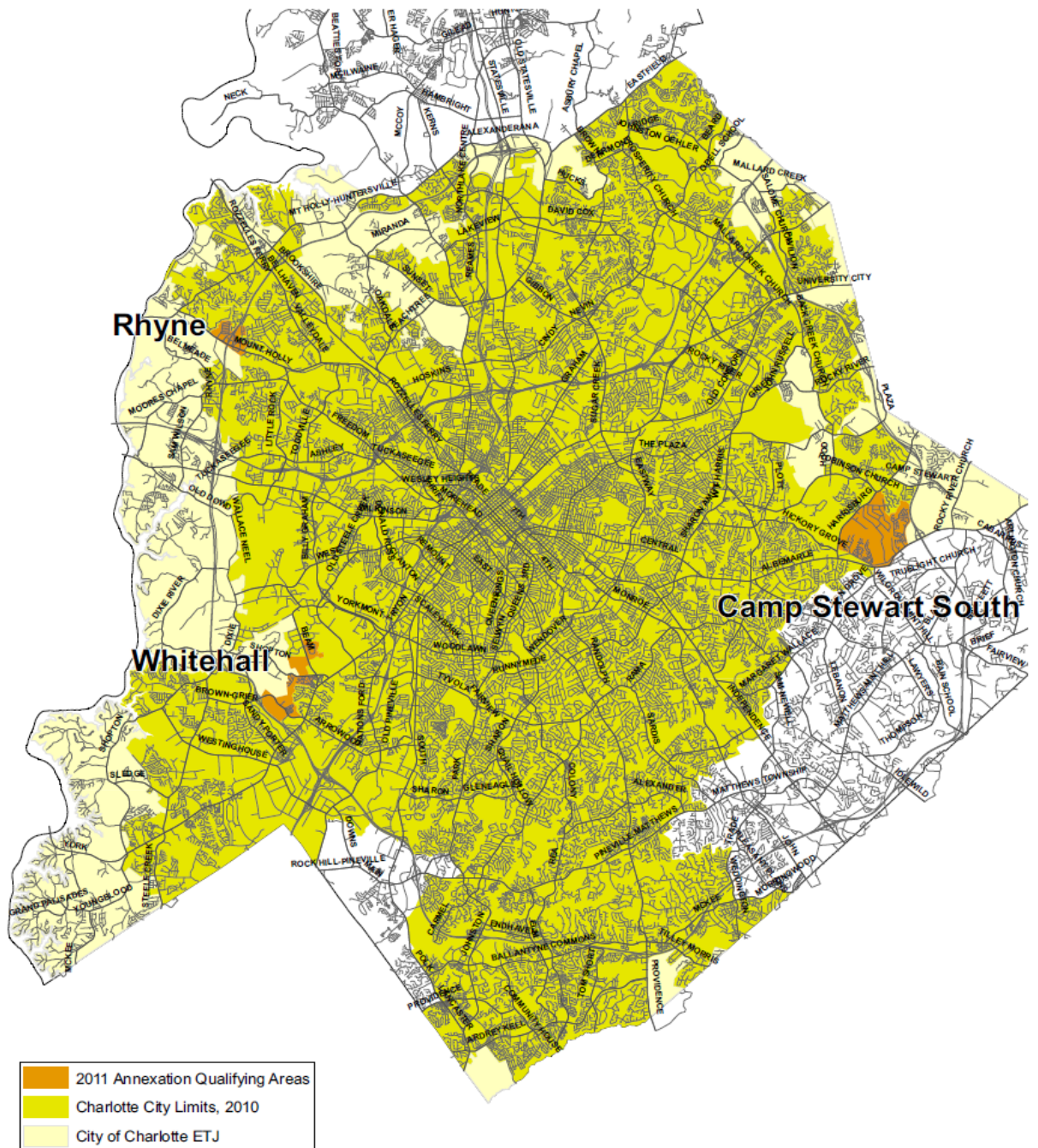
- Three areas on east and west edges of City
- Consists of 3.8 square miles
- Includes portion of McKee Creek drainage basin



CITY OF CHARLOTTE

# 2011 Annexation Qualifying Areas

## City of Charlotte



Produced by the Charlotte-Mecklenburg Planning Department  
Data Source: City of Charlotte, Mecklenburg County

Data current as of February 15, 2010



## 2011 Annexation Qualifying Area

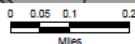
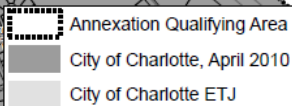


Data current as of April 9, 2010





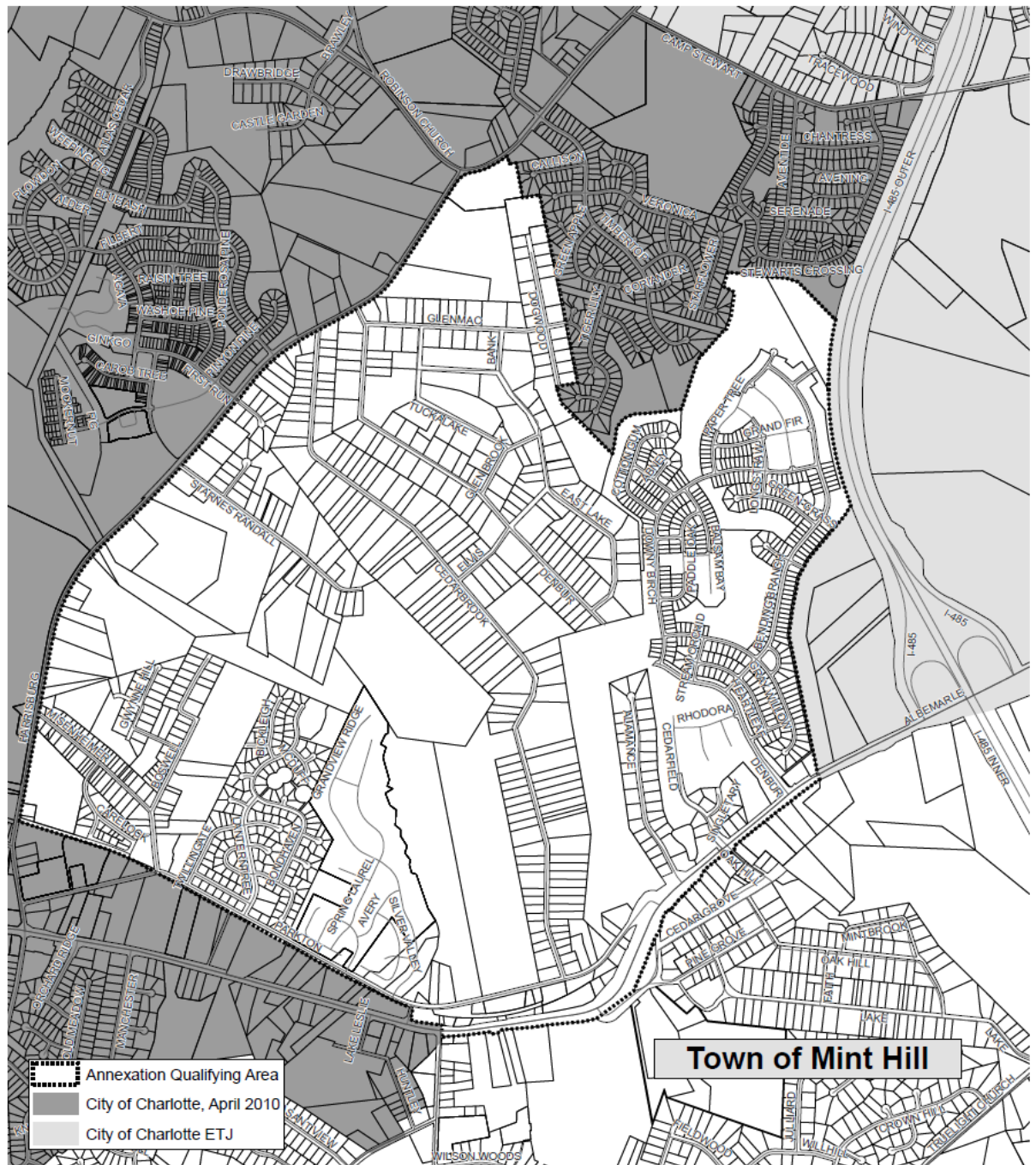
## 2011 Annexation Qualifying Area



Data current as of April 9, 2010



## Camp Stewart South 2011 Annexation Qualifying Area



Produced by the Charlotte-Mecklenburg Planning Department  
Data Source: City of Charlotte, Mecklenburg County



Data current as of April 9, 2010



# 2011 Annexation

## Facts:

- Area: approx. 2,433 acres (3.8 square mi.)
- Population: approx. 4,100
- Dwellings: approx. 1,900
- Real & personal property valuation: \$340 million
- Area increase from 299 to 303 sq. mi. (1.3% increase)
- Population increase from 726,300 to 730,400 (0.5 % increase)



# 2011 Annexation

## Annexation expenditures & revenues (operating)

### Operating expenditures:

FY11:	\$	645,266
FY12:	\$	1,538,182
FY13:	\$	1,319,352

### Operating revenues:

FY11:	\$	0
FY12:	\$	1,392,023
FY13:	\$	1,730,259





## 2011 Annexation

### Annexation expenditures & revenues (continued)

#### Revenues over operating expenditures:

FY11:	\$	(645,266)
FY12:	\$	(146,159)
FY13:	\$	410,907

#### Net Impact to General Fund:

FY11:	\$	(645,266)
FY12:	\$	352,943
FY13:	\$	696,879



# Comparison of General Fund impacts: 2009 vs. 2011 Annexations

Net impact to General Fund  
2009 Annexation:

FY09:	\$	(4,894,528)
FY10:	\$	140,283
FY11:	\$	1,925,186

Net impact to General Fund  
2011 Annexation:

FY11:	\$	(645,266)
FY12:	\$	352,943
FY13:	\$	696,879



# 2011 Annexation

## 2009 vs. 2011 Annexation Comparison

	<u>2009</u>	<u>2011</u>
Land area:		
Acres:	7,066	2,433
Sq. miles:	11.0	3.8
Dwellings:	7,304	1,896
Population (est.):	18,500	4,100
Property valuation (real/personal):	\$1.5 B	\$340 M



# 2011 Annexation

## Anticipated Calendar:

**June 14:** Council receives Preliminary Annexation Report and considers annexation Resolutions of Intent & area Annexation Reports

**Aug. 5:** Public Informational Meeting

**Aug. 23:** Council holds Annexation Public Hearings

**Nov. 22:** Council considers Annexation ordinances

**June 30:** Annexations become effective;  
(2011) services extended





CITY OF CHARLOTTE

# 2011 Annexation

