

2026-015: KT Trading LLC

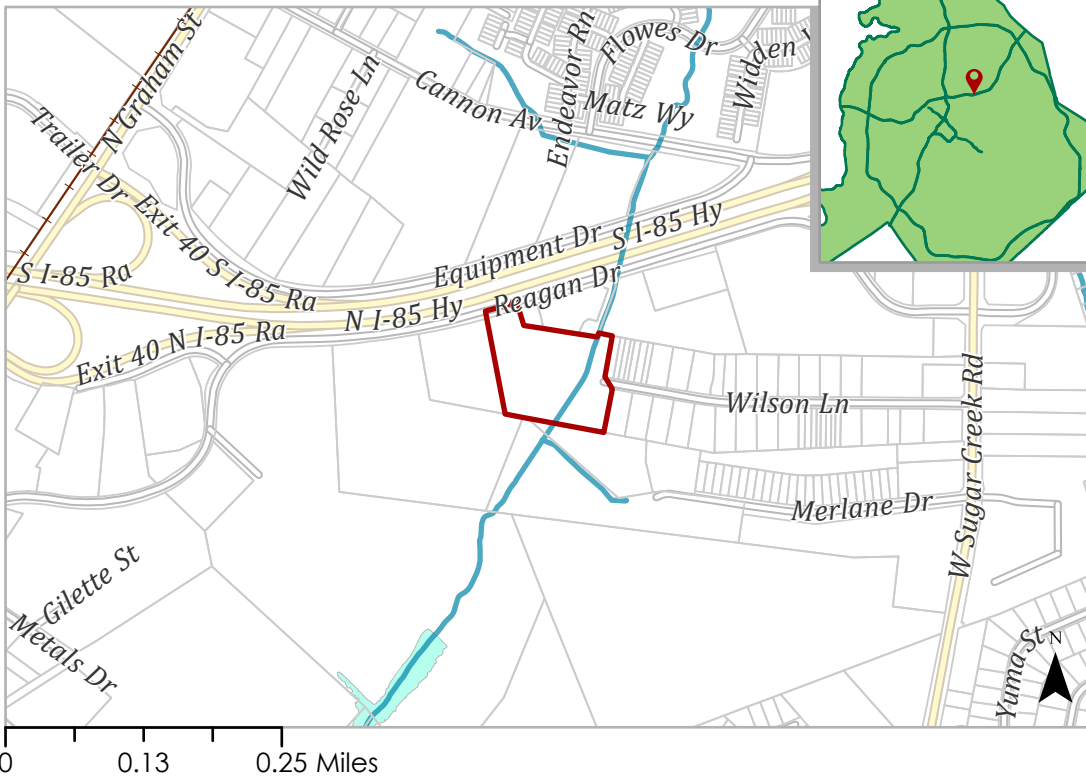
Parcel(s):
08707103

Current Zoning:
I-1 (CD) (Light Industrial, Conditional)

Requested Zoning:
ML-1 (Manufacturing and Logistics-1)

Size:
Approximately 5.72 acres

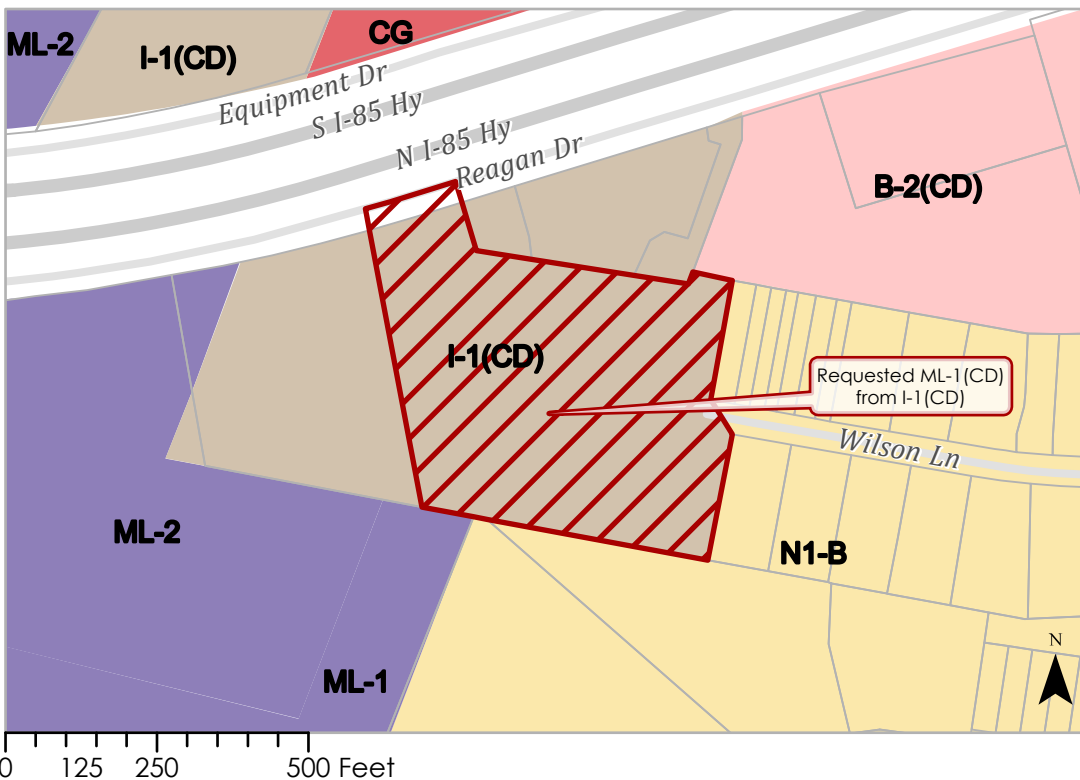
Location of Requested Rezoning



Rezoning Area

- 2026-015
 - Inside City Limits
 - Parcel
 - Railway
 - Streams
 - FEMA Flood Plain
- City Council District:**
- 1-Danté Anderson

Existing Zoning & Rezoning Request



Zoning Classification

- Neighborhood 1
- Commercial
- Business
- Manufacturing & Logistics
- Light Industrial
- Requested ML-1(CD) from I-1(CD)