

HAVEN COMMUNITIES, LLC

9200 UNIVERSITY CITY BOULEVARD CHARLOTTE, NC 28213


CONSTRUCTION DOCUMENTS

APPROVED
By mark chapman at 11:08 am, May 03, 2017

APPROVED

APPROVED
By rgrochoske at 9:51 am, May 03, 2017

APPROVED
By Erin Chantry at 4:33 pm, May 03, 2017



CHARLOTTE

FINAL APPROVAL

ENGINEERING
PCO / DETENTION / DRAINAGE PLAN

EROSION CONTROL

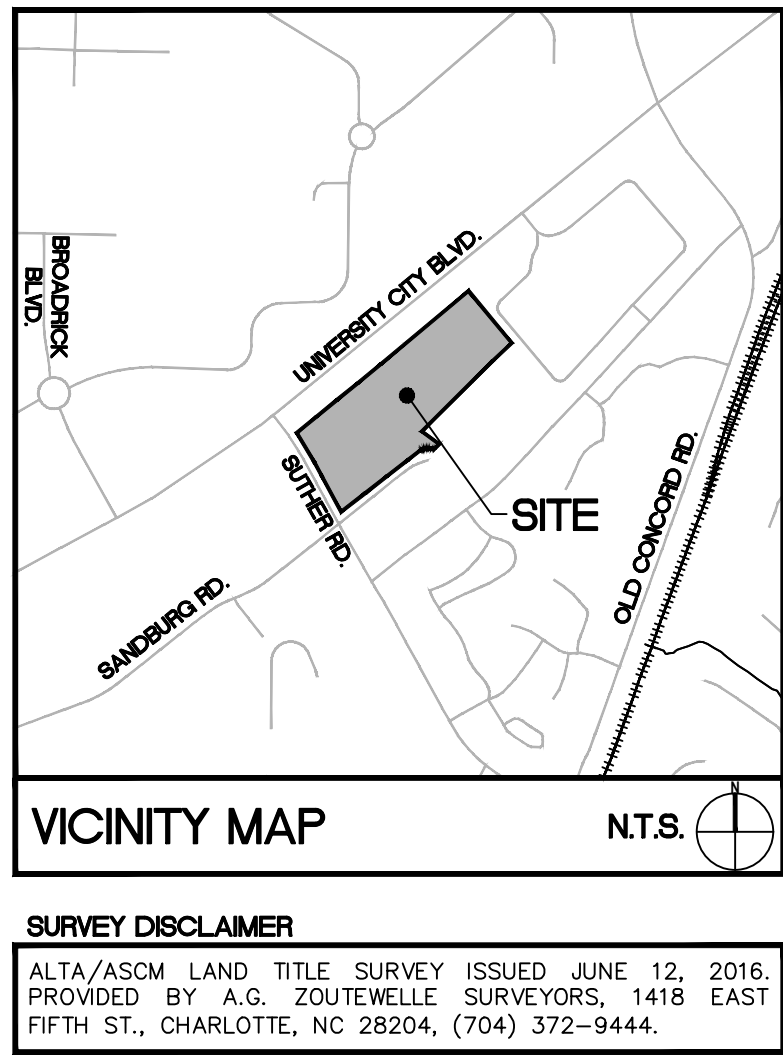
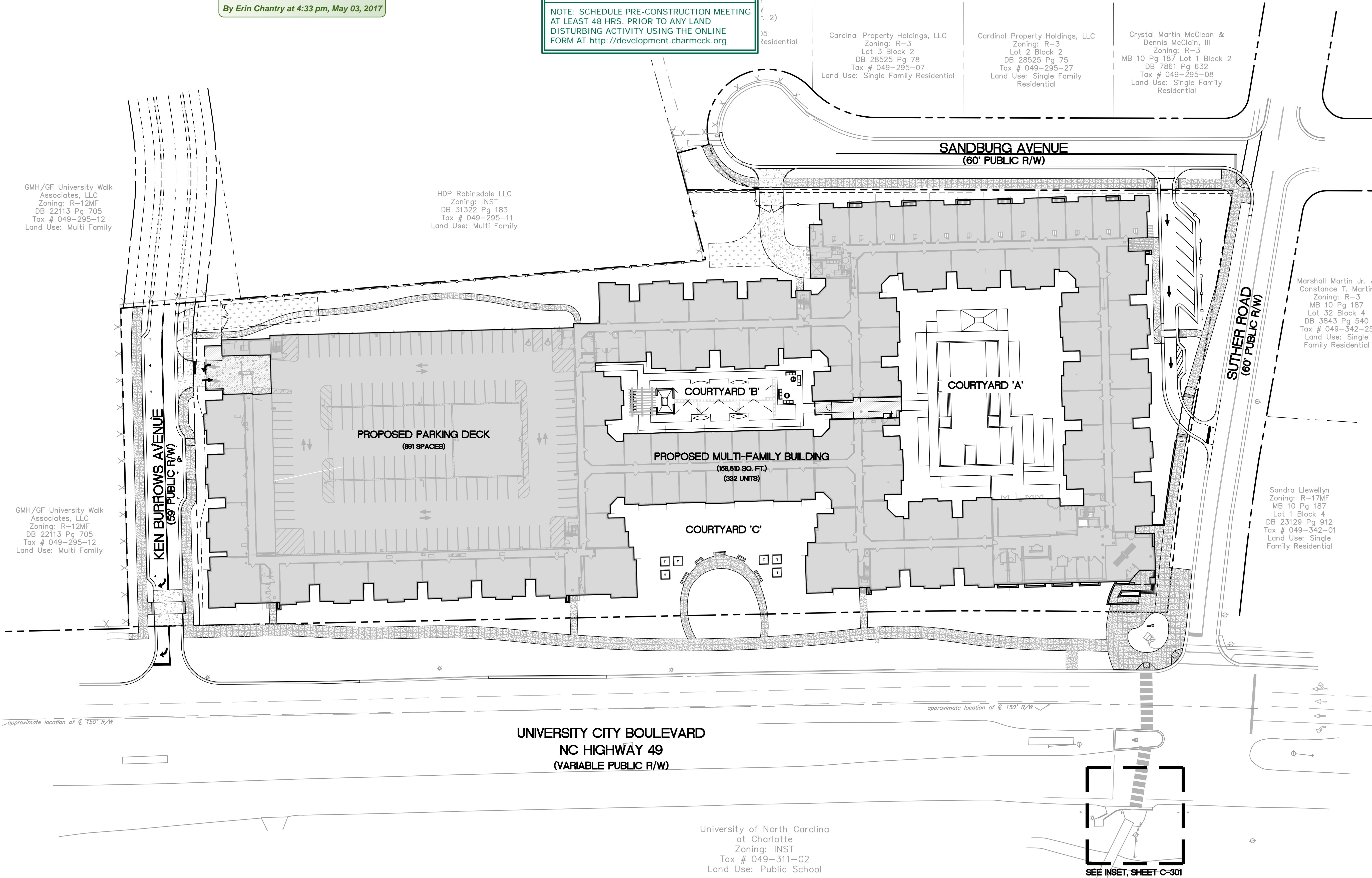
URBAN FORESTRY
TREE ORDINANCE

CDOT

PLANNING
UMUDD / MUDD / PED / TOD

NOTE: THIS PLAN APPROVAL DOES NOT INCLUDE COMMERCIAL ZONING. ALL BUILDING PERMITS AND ZONING APPROVALS CAN BE OBTAINED AT MECKLENBURG COUNTY CODE ENFORCEMENT. PLEASE CALL CTAC AT 704-314-CODE(2633) FOR MORE INFORMATION.

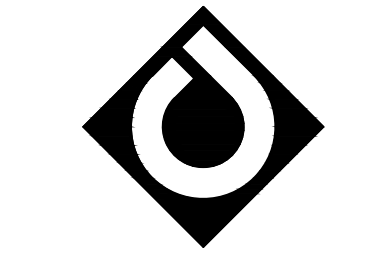
NOTE: SCHEDULE PRE-CONSTRUCTION MEETING AT LEAST 48 HRS. PRIOR TO ANY LAND DISTURBING ACTIVITY USING THE ONLINE FORM AT <http://development.charmeck.org>



SITE/CIVIL SHEET INDEX

SHEET LIST

- | | |
|--------|--|
| C-000 | OVERALL PROJECT PLAN |
| V-100 | SITE SURVEY |
| C-200B | DEMOLITION PLAN - PHASE IB |
| C-201B | DEMOLITION PLAN - PHASE IB |
| C-300 | DIMENSION CONTROL PLAN |
| C-301 | DIMENSION CONTROL PLAN |
| C-302 | SITE FIRE PROTECTION PLAN |
| C-400B | EROSION CONTROL PLAN - PHASE IB |
| C-401B | EROSION CONTROL PLAN - PHASE IB |
| C-402 | EROSION CONTROL PLAN - PHASE II |
| C-403 | EROSION CONTROL PLAN - PHASE II |
| C-404 | EROSION CONTROL PLAN - PHASE III |
| C-405 | EROSION CONTROL PLAN - PHASE III |
| C-500 | GRADING AND DRAINAGE PLAN |
| C-501 | GRADING AND DRAINAGE PLAN |
| C-502 | STORM DRAINAGE AREA MAP |
| C-503 | STORM DRAINAGE AREA MAP |
| C-504 | STORM DRAINAGE SCHEDULE |
| C-505 | PCCO DRAINAGE AREA MAP |
| C-600 | UTILITY PLAN |
| C-601 | UTILITY PLAN |
| L-700 | PLANTING PLAN |
| L-701 | PLANTING PLAN |
| C-800 | PAVEMENT SPECIFICATIONS, TYPICAL SECTIONS, AND DETAILS |
| C-801 | STRIPING SPECIFICATIONS AND DETAILS |
| C-820 | STRIPING AND SIGNAGE PLAN |
| C-821 | STRIPING AND SIGNAGE PLAN |
| C-830 | SIGHT DISTANCE PROFILE - PARKING GARAGE AT KEN BURROWS AVENUE |
| C-831 | SIGHT DISTANCE AND PROFILE - KEN BURROWS AVENUE + UNIV. CITY BLVD. |
| C-832 | SIGHT DISTANCE AND PROFILE - PARKING LOT + SUTHER ROAD |
| C-840 | ROADWAY PROFILE - KEN BURROWS AVE. |
| C-900 | SITE DETAILS |
| C-901 | SITE DETAILS |
| C-902 | SITE DETAILS |
| C-903 | SITE DETAILS |
| C-904 | SITE DETAILS |
| C-905 | SITE DETAILS |
| C-906 | SITE DETAILS |
| C-907 | SITE DETAILS |
| C-908 | NCDOT TRAFFIC CONTROL DETAILS |



ColeJenest & Stone

Shaping the Environment
Realizing the Possibilities

Land Planning

Landscape Architecture

Civil Engineering

Urban Design

200 South Tryon Street, Suite 1400
Charlotte, North Carolina 28202

p+ 704.376.1555 f+ 704.376.7851
url+ www.colejeneststone.com

**HAVEN CAMPUS
COMMUNITIES, LLC**

3284 NORTHSIDE PARKWAY
SUITE 500
ATLANTA, GA 30327

**HAVEN
CHARLOTTE**

9200 UNIVERSITY CITY BLVD.
CHARLOTTE, NC 28213

**OVERALL
PROJECT PLAN**

Project No.

4475

Issued

12/4/16

ISSUED FOR CONSTRUCTION

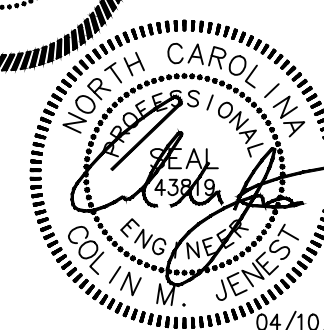
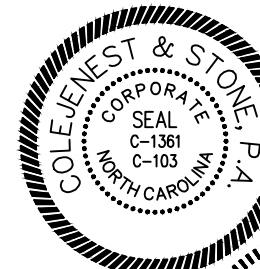
Revised

12/22/16 - CITY OF CHARLOTTE AND NCDOT REVIEW

02/08/17 - PERMIT COMMENTS

02/24/17 - CITY OF CHARLOTTE AND NCDOT COMMENTS

04/10/17 - CITY OF CHARLOTTE AND NCDOT COMMENTS



SCALE: 1"=40'
0 20' 40' 80'

C-000

The drawings, the project manual and the design shown thereon are instruments of ColeJenest & Stone, P.A. The reproduction or unauthorized use of the documents without consent of ColeJenest & Stone, P.A. is prohibited.

ColeJenest & Stone, P.A. 2017 ©

- CONTRACTOR IS FULLY RESPONSIBLE FOR CONTACTING APPROPRIATE PARTIES AND ASSURING THAT EXISTING UTILITIES ARE LOCATED PRIOR TO CONSTRUCTION.
- CONTRACTOR IS RESPONSIBLE FOR PLACING BARRICADES USING FLAG MEN, ETC. AS NECESSARY TO INSURE SAFETY TO THE PUBLIC.
- ALL PAVEMENT CUTS, CONCRETE OR ASPHALT, ARE TO BE REPLACED ACCORDING TO STANDARDS OF THE NORTH CAROLINA DEPARTMENT OF TRANSPORTATION AND CHARLOTTE-MECKLENBURG UTILITIES SPECIFICATIONS.
- SHORING WILL BE ACCORDING TO OSHA TRENCHING STANDARDS PART 1926 SUBPART P, OR AS AMENDED.