

1601 COVER.dwg



Know what's below.
Call before you dig.

- 1). CONTRACTOR IS FULLY RESPONSIBLE FOR CONTACTING APPROPRIATE PARTIES AND ASSURING THAT EXISTING UTILITIES ARE LOCATED PRIOR TO BEGINNING CONSTRUCTION.
- 2). CONTRACTOR IS RESPONSIBLE FOR PLACING BARRICADES USING FLAGMEN, ETC., AS NECESSARY TO INSURE SAFETY TO THE PUBLIC.
- 3). ALL PAYMENT CUTS, CONCRETE OR ASPHALT, ARE TO BE REPLACED ACCORDING TO STANDARDS OF THE NORTH CAROLINA DEPARTMENT OF TRANSPORTATION.
- 4). SHORING WILL BE ACCORDING TO OSHA TRENCHING STANDARDS PART 1926 SUBPART P, OR AS AMENDED.

NOTES:

COORDINATE ALL CURB AND STREET GRADES IN INTERSECTION WITH INSPECTOR.
ALL ROAD IMPROVEMENTS AT ARE TO BE COORDINATED WITH THE CITY OF CHARLOTTE ENGINEERING DEPARTMENT PRIOR TO CONSTRUCTION.

DEVELOPER WILL PROVIDE STREET SIGNS PER CLOS# 50.05 (9" SIGNS ONLY)

SIGHT TRIANGLES SHOWN ARE THE MINIMUM REQUIRED.

DIRECT VEHICULAR ACCESS TO FROM LOTS IS PROHIBITED.

IN ROLLING AND HILLY TERRAINS, SWEEPING OF THE STONE BASE AND/OR APPLICATION OF A TACK COAT MAY BE REQUIRED NEAR INTERSECTIONS. THESE REQUIREMENTS WILL BE ESTABLISHED BY THE INSPECTOR AND BASED ON FIELD CONDITIONS.

APPROVAL OF THIS PLAN IS NOT AN AUTHORIZATION TO GRADE ADJACENT PROPERTIES. WHEN FIELD CONDITIONS WARRANT OFF-SITE GRADING, PERMISSION MUST BE OBTAINED FROM THE AFFECTED PROPERTY OWNERS.

IN ORDER TO ENSURE PROPER DRAINAGE, KEEP A MINIMUM OF 0.5% SLOPE ON THE CURB.

SUBSURFACE DRAINAGE FACILITIES MAY BE REQUIRED IN THE STREET RIGHT-OF-WAY IF DEEMED NECESSARY BY THE INSPECTOR.

CURB AND GUTTER SHOWN ON PLANS ALONG MAY BE ADJUSTED BASED UPON FIELD STAKING BY CITY ENGINEERING. ASSOCIATED STORM DRAINAGE MAY ALSO REQUIRE MODIFICATION BASED UPON FIELD CONDITIONS.

THE PURPOSE OF THE STORM DRAINAGE EASEMENT (SDE) IS TO PROVIDE STORM WATER CONVEYANCE. BUILDINGS ARE NOT PERMITTED IN THE EASEMENT AREA. ANY OTHER OBJECTS WHICH IMPEDE STORM WATER FLOW OR SYSTEM MAINTENANCE ARE ALSO PROHIBITED.

HIGH-DENSITY POLYETHYLENE (HDPE) STORM DRAINAGE PIPE INSTALLED WITHIN EXISTING OR PROPOSED PUBLIC STREET RIGHT-OF-WAY MUST BE APPROVED BY THE CITY'S INSPECTOR PRIOR TO ANY BACKFILL BEING PLACED.

BACKFILL MATERIAL MUST BE APPROVED BY THE CITY INSPECTOR PRIOR TO PLACEMENT OF THE MATERIAL WITHIN THE PUBLIC STREET RIGHT-OF-WAY.

THE DEVELOPER SHALL MAINTAIN EACH STREAM, CREEK, OR BACKWASH CHANNEL IN AN UNRESTRICTED STATE AND SHALL REMOVE FROM THE CHANNEL AND BANKS OF THE STREAM ALL DEBRIS, LOGS, TIMBER, LUMP AND OTHER ACCUMULATIONS.

ANY BUILDING WITHIN THE 100+1 STORMWATER ELEVATION LINE IS SUBJECT TO THE RESTRICTIONS OF THE (CITY OF CHARLOTTE/MECKLENBURG COUNTY) SUBDIVISION ORDINANCE, SECTION 7.200.8.

ANY CONSTRUCTION OR USE WITHIN THE FUTURE CONDITIONS FLOOD FRINGE LINE IS SUBJECT TO THE RESTRICTIONS IMPOSED BY THE FLOODWAY REGULATIONS OF THE CITY OF CHARLOTTE AND MECKLENBURG COUNTY.

ALL OPENINGS (E.G., DOORS, WINDOWS, VENTS) IN STRUCTURES BUILT ON LOT #S SHOULD BE LOCATED A MINIMUM OF ONE FOOT ABOVE THE ADJACENT FINISHED GROUND SURFACE (APPLIES TO LOTS WHICH MAY EXPERIENCE SIGNIFICANT OVERLAND FLOW NOT CONSIDERED IN THE 100+1 FLOOD ANALYSIS.)

PE SEALED SHOP DRAWINGS FOR RETAINING WALL MUST BE SUBMITTED TO CITY ENGINEER PRIOR TO CONSTRUCTION.

"AS-BUILT" DRAWINGS AND PLANS OF THE STORM DRAINAGE SYSTEM, INCLUDING DESIGNED DITCHES, MUST BE SUBMITTED PRIOR TO SUBDIVISION FINAL INSPECTION TO THE CITY/COUNTY ENGINEERING DEPARTMENT IN ACCORDANCE WITH THE CITY/COUNTYSUBDIVISION ORDINANCE.

PRIOR TO INSTALLATION, PE SEALED SHOP DRAWINGS FOR UNDERGROUND DETENTION SYSTEMS MUST BE FURNISHED TO CITY OF CHARLOTTE ENGINEERING FOR APPROVAL.

PRIOR TO GO, SURVEYOR SEALED AS-BUILT DRAWINGS OF ALL WATER QUALITY BMP'S AND DETENTION SYSTEMS MUST BE PROVIDED.

PRIOR TO PLAT RECDORATION, OFFSITE R/W AND/OR CONSTRUCTION EASEMENTS ARE REQUIRED TO BE OBTAINED ACCORDING TO THE GUIDELINES OF THE "OFFSITE R/W ACQUISITION PROCESS". THESE NEEDED R/W AND CONSTRUCTION LIMITS ARE CLEARLY SHOWN ON THE ROADWAY IMPROVEMENT PLAN.

PER SECTION 18-172(C) OF CITY CODE AND SECTION 10.0 OF THE CITY'S POST CONSTRUCTION CONTROLS ADMINISTRATIVE MANUAL, ALL REQUIRED NATURAL AREAS AND/OR POST CONSTRUCTION CONTROLS EASEMENTS (PCEES) MUST BE RECORDED PRIOR TO THE ISSUANCE OF THE CERTIFICATE OF OCCUPANCY.

THE DEVELOPER SHALL CONTACT THE CHARLOTTE DEPARTMENT OF TRANSPORTATION (DUS JORDI, 704-336-7086) TO IDENTIFY ANY CONFLICTS WITH TRAFFIC SIGNALIZATION EQUIPMENT. 60- 90 DAYS WILL BE REQUIRED TO COORDINATE RELOCATION.

DEVELOPER SHALL BE RESPONSIBLE FOR ALL RELATED RELOCATION COST AND/OR ANY REPAIR COST CAUSED BY THE CONTRACTOR/DEVELOPER.

CERTIFICATION AND STREET CUT PERMITS ARE REQUIRED FOR UTILITY CUTS ON CITY STREETS. ALLOW 7 DAYS PROCESSING FOR PERMIT. FOR INFORMATION CONTACT CHARLOTTE DEPARTMENT OF TRANSPORTATION (704-336-4025) OR VISIT: [HTTP://WWW.CHARMECK.ORG/DEPARTMENTS/TRANSPORTATION/STREET+MAINTENANCE/HOME.HTM](http://www.charmeck.org/departments/transportation/street+maintenance/home.htm)

NON-STANDARD ITEMS (IE. PAVERS, IRRIGATION SYSTEMS, ETC.) IN THE RIGHT-OF-WAY REQUIRE A RIGHT-OF-WAY ENCROACHMENT AGREEMENT WITH THE CHARLOTTE DEPARTMENT OF TRANSPORTATION/NORTH CAROLINA DEPARTMENT OF TRANSPORTATION BEFORE INSTALLATION. FOR CITY OF CHARLOTTE MAINTAINED STREETS, CONTACT CDOT AT 704-336-3888.

SIDEWALK WITHIN THE CITY'S R/W THAT REQUIRES REPLACEMENT AS PART OF THE DEVELOPMENT AND/OR STREET IMPROVEMENTS SHOULD BE PHASED IN SUCH A WAY AS TO MINIMIZE THE DURATION OF THE SIDEWALK CLOSURE TO THE EXTENT FEASIBLE. THE DEVELOPER SHOULD MAKE EVERY ATTEMPT TO HAVE SIDEWALK REPAIRED AND REOPENED FOR PUBLIC USE WITHIN 30 DAYS OF REMOVAL.

ANY WORK WITHIN THE CITY'S R/W THAT REQUIRES CLOSURE OF THE SIDEWALK OR TRAVEL LANE FOR LESS THAN 30 DAYS REQUIRES A R/W USE PERMIT. TRAFFIC CONTROL PLANS FOR ANY SIDEWALK OR TRAVEL LANE CLOSURES MUST BE SUBMITTED AS PART OF THE R/W USE PERMIT REQUEST. TRAFFIC CONTROL PLANS MUST BE IN ACCORDANCE WITH CDOT'S WORK AREA TRAFFIC CONTROL HANDBOOK (WATCH) AND MUST BE REVIEWED AND APPROVED. CONTRACTOR SHALL CONTACT CDOT AT LEAST 5 BUSINESS DAYS IN ADVANCE OF BEGINNING OF WORK AT (704) 432-1162.

RIGHT-OF-WAY CLOSURES LONGER THAN 30 DAYS REQUIRE A R/W LEASE AGREEMENT WHICH WILL INCLUDE THE SUBMITTAL OF A TRAFFIC CONTROL PLAN. TRAFFIC CONTROL PLANS REQUIRED THROUGH A LEASE AGREEMENT MAY BE DIFFERENT FROM THE ONE REQUIRED DURING THE LAND DEVELOPMENT PLAN REVIEW AND ARE SUBJECT TO REVISIONS. THE REVISED TRAFFIC CONTROL PLANS MUST BE SUBMITTED AS PART OF THE LEASE AGREEMENT PROCESS FOR APPROVAL PRIOR TO START OF R/W CLOSURES. CONTRACTOR SHALL CONTACT CDOT AT (704) 336-8348.

CONSTRUCTION STAGING WITHIN CITY R/W LASTING MORE THAN 30 DAYS REQUIRES A R/W LEASE AGREEMENT. CONTRACTOR SHALL CONTACT CDOT AT (704) 336-8348.

WALDON RIDGE SUBDIVISION

SHARPES CIRCLE & WALDON DRIVE

CHARLOTTE, NORTH CAROLINA 28214

MECKLENBURG COUNTY

CIVIL PLANS

FOR

RED PARTNERS, LLC

4711 TRUSCOTT ROAD
CHARLOTTE, NC 28226

(704) 497-0038

ra@gowithred.com

APPROVED FOR
CONSTRUCTION

CHARLOTTE-MECKLENBURG PLANNING DEPARTMENT
By: Joshua Weaver 5-31-2016



FINAL
APPROVAL

<http://development.charmeck.org>

ENGINEERING

PCO / DETENTION / DRAINAGE PLAN

EROSION CONTROL

NOTE: SCHEDULE PRE-CONSTRUCTION MEETING AT LEAST 48 HRS. PRIOR TO ANY LAND DISTURBING ACTIVITY USING THE ONLINE FORM AT <http://development.charmeck.org>

URBAN FORESTRY

TREE ORDINANCE

CDOT

NOTE: THIS PLAN APPROVAL DOES NOT INCLUDE COMMERCIAL ZONING. ALL BUILDING PERMITS AND ZONING APPROVALS CAN BE OBTAINED AT MECKLENBURG COUNTY CODE ENFORCEMENT. PLEASE CALL CTAC AT 704-336-3829 FOR MORE INFORMATION.

APPROVED

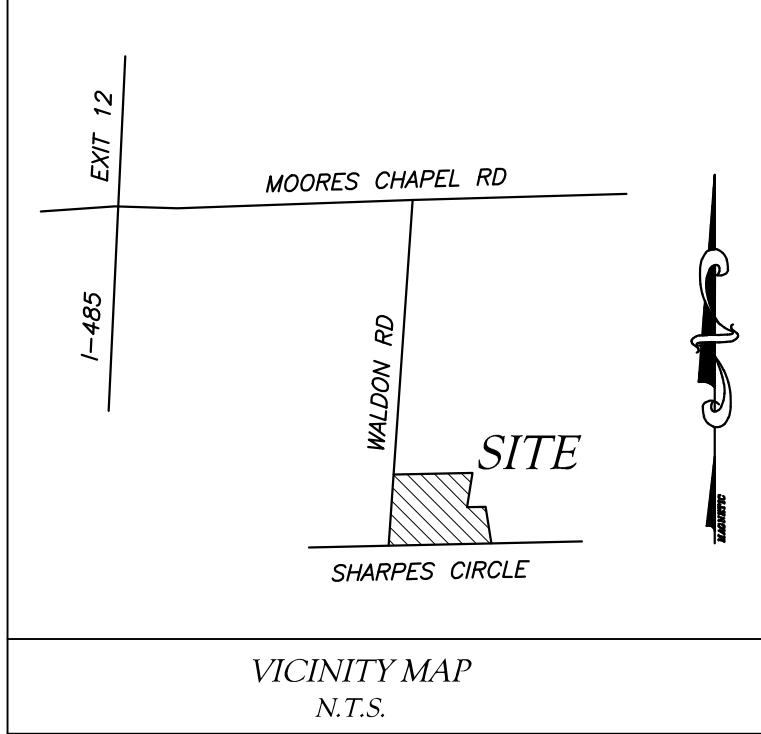
By mchapman at 3:27 pm, May 31, 2016

APPROVED

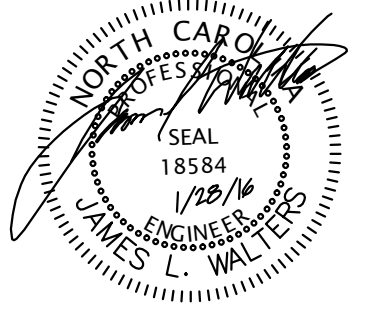
By mchapman at 3:27 pm, May 31, 2016

APPROVED

By Rick Grochoske at 4:01 pm, May 26, 2016



LWE
LATHAM-WALTERS
ENGINEERING, INC.
N.C. CORP. LIC. C-1815
16507-A NORTHCROSS DRIVE
HUNTERSVILLE, N.C. 28078
PHONE: (704) 895-8484
FAX: (704) 237-4362



NOT
RELEASED FOR CONSTRUCTION
JANUARY 28, 2016
DATE

RED PARTNERS, LLC

4711 TRUSCOTT ROAD
CHARLOTTE, NC 28226
PHONE: (704) 497-0038
FAX: (980) 225-1100
ra@gowithred.com

WALDON RIDGE SUBDIVISION
SHARPES CIRCLE CHARLOTTE, NC 28214

COVER

REVISIONS

REV. NO. 1 REV. DATE: 04/05/16
REVISED PER CITY OF CHARLOTTE
1ST REVIEW COMMENTS

PROJECT NO.: 2016.01

SCALE: NOT TO SCALE

DRAWN BY: PAB

CHECKED BY: JLW

SHEET NO:

C

SHEET INDEX	
Sheet Number	Sheet Title
C	COVER
C1.0	EXISTING CONDITIONS DEMOLITION PLAN
C2.0	SITE PLAN
C3.0	EROSION CONTROL PLAN
C4.0	EROSION CONTROL DETAILS
C4.1	EROSION CONTROL DETAILS
C5.0	UTILITY PLAN
C6.0	LANDSCAPE PLAN
C7.0	MISCELLANEOUS DETAILS

