

CONSTRUCTION PLANS

LINK APARTMENTS MONTFORD - BUILDING 1

4601 PARK ROAD
CHARLOTTE, MECKLENBURG COUNTY, NORTH CAROLINA 28209

UTILITY AND GOVERNING AGENCIES CONTACT LIST AND
MATRIX:

WATER COMPANY

CHARLOTTE WATER
5100 BROOKSHIRE BOULEVARD
CHARLOTTE, NC 28216
(704)399-2221

SANITARY SEWER COMPANY

CHARLOTTE WATER
5100 BROOKSHIRE BOULEVARD
CHARLOTTE, NC 28216
(704)399-2221

NATURAL GAS COMPANY

PIEDMONT NATURAL GAS
4339 SOUTH TRYON STREET
CHARLOTTE, NC 28217
(704) 587-3160 TEL
(704) 529-1247 FAX

FIRE MARSHAL

MECKLENBURG COUNTY/CITY FIRE
700 N. TRYON STREET
CHARLOTTE, NORTH CAROLINA 28202
(704) 336-2154 TEL

EROSION CONTROL

CITY OF CHARLOTTE
ENGINEERING AND PROPERTY MANAGEMENT
600 E. 4TH STREET
CHARLOTTE, NORTH CAROLINA 28202
PATRICK STORZ
TEL: 704-572-0114

ENGINEERING DEPARTMENT

CITY OF CHARLOTTE
ENGINEERING & PROPERTY MANAGEMENT
600 E. 4TH STREET
CHARLOTTE, NORTH CAROLINA 28202
(704) 336-2291 TEL

EROSION CONTROL INSPECTOR

CITY OF CHARLOTTE
ENGINEERING AND PROPERTY MANAGEMENT
600 E. 4TH STREET
CHARLOTTE, NORTH CAROLINA 28202
PATRICK STORZ
TEL: 704-336-4258

SITE INSPECTOR

SHELLY YUNGFLEISCH
CITY OF CHARLOTTE
ENGINEERING AND PROPERTY MANAGEMENT
600 E. 4TH STREET
CHARLOTTE, NORTH CAROLINA 28202

URBAN FORESTRY INSPECTOR

GARY TURNER
CITY OF CHARLOTTE
ENGINEERING AND PROPERTY MANAGEMENT
600 E. 4TH STREET
CHARLOTTE, NORTH CAROLINA 28202

POWER COMPANY

DUKE POWER
526 SOUTH CHURCH STREET
CHARLOTTE, NC 28202
(800) 777-9898

TELEPHONE COMPANY

BELL SOUTH COMMUNICATIONS
(888) 757-6500

CABLE TELEVISION COMPANY

TIME WARNER CABLE
(704) 378-2866 TEL

DEPARTMENT OF TRANSPORTATION

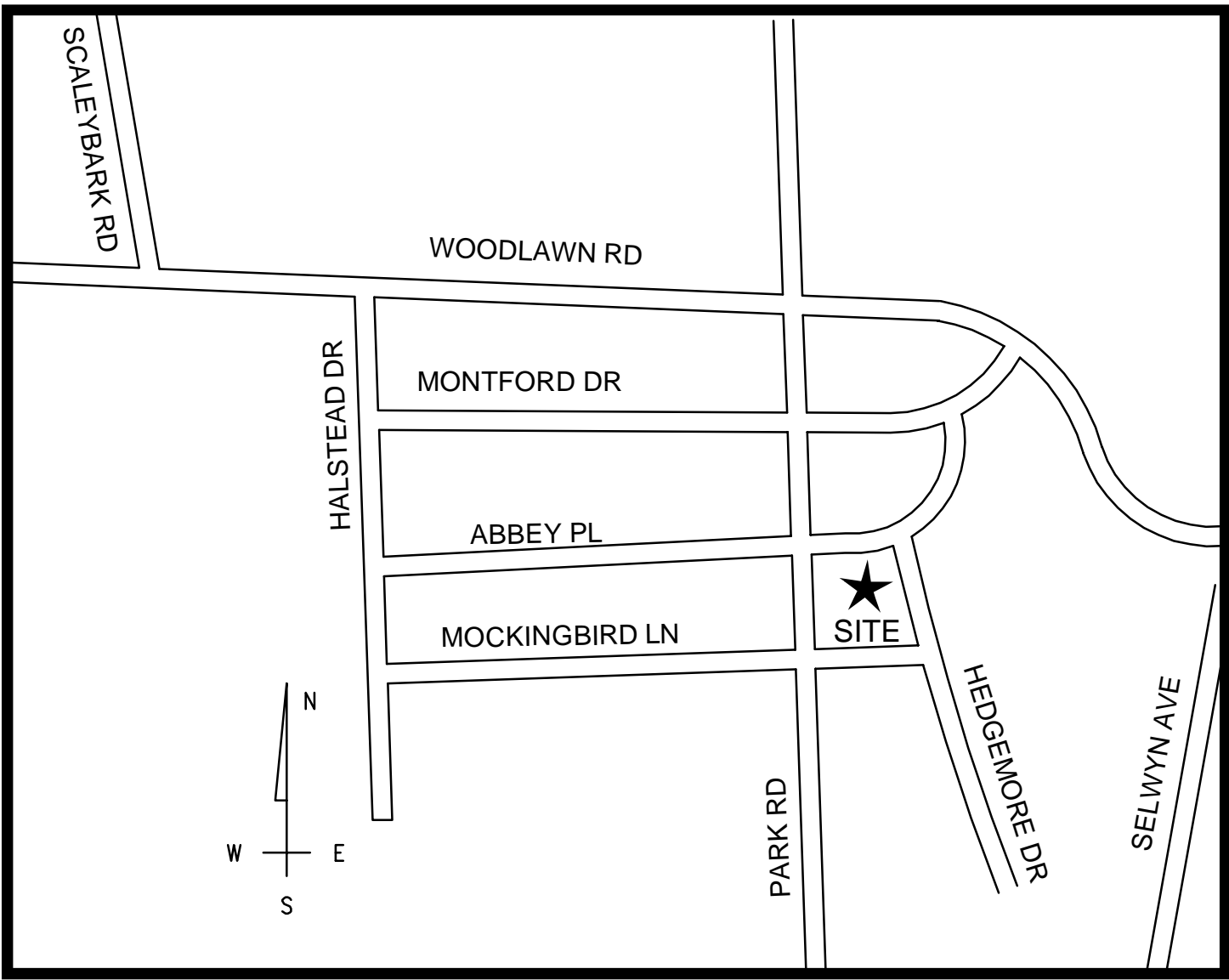
CHARLOTTE DEPARTMENT OF TRANSPORTATION
600 E. 4TH STREET
CHARLOTTE, NORTH CAROLINA 28202
(704) 336-4119 TEL

PLANNING DEPARTMENT

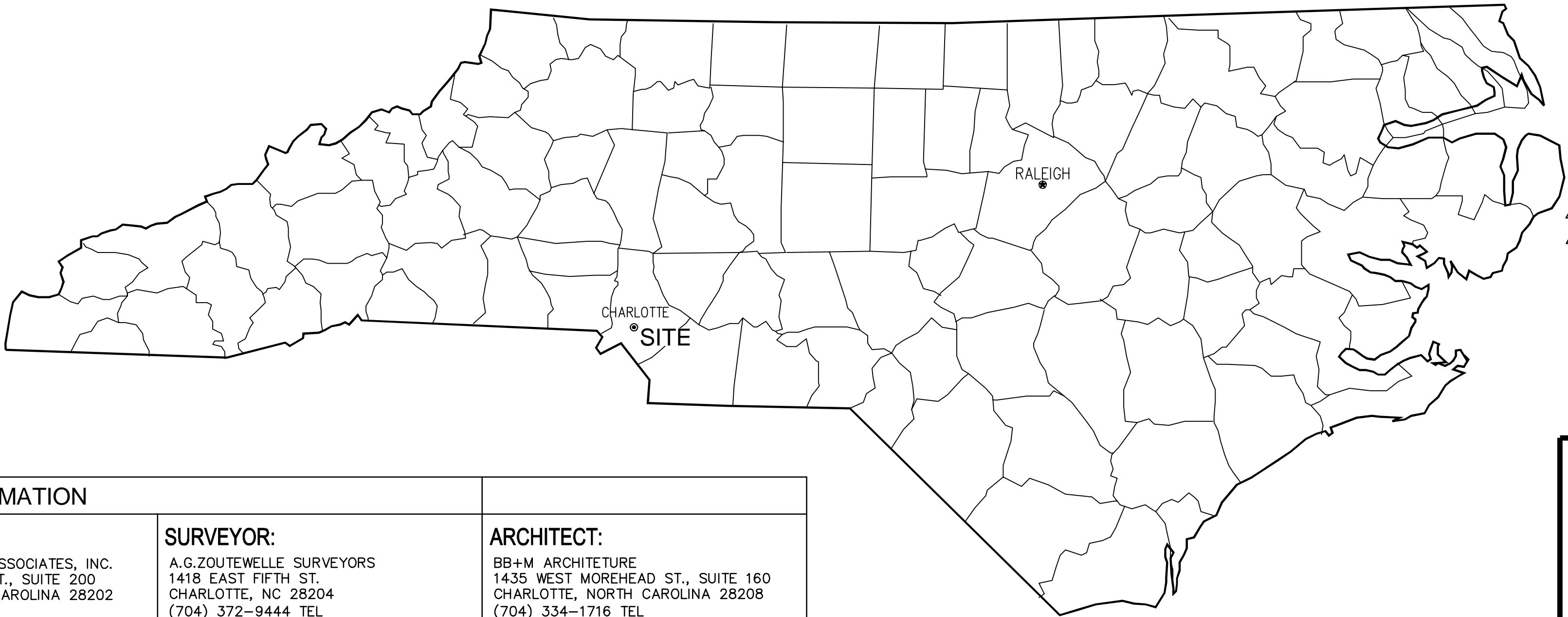
CHARLOTTE MECKLENBURG PLANNING COMMISSION
600 E. 4TH STREET
CHARLOTTE, NORTH CAROLINA 28202
(704) 336-2672 TEL

ZONING DEPARTMENT

CHARLOTTE MECKLENBURG ZONING ADMINISTRATION
600 E. FOURTH STREET
CHARLOTTE, NORTH CAROLINA 28202
(704) 336-8314 TEL



SITE LOCATION MAP
NOT TO SCALE



SHEET LIST TABLE	
Sheet Number	Sheet Title
C0-0	COVER SHEET
C0-1	EXISTING CONDITIONS SURVEY
C0-2	EXISTING CONDITIONS SURVEY
C0-3	EXISTING CONDITIONS SURVEY
RZ-1	TECHNICAL DATA SHEET
RZ-2	TECHNICAL DEVELOPMENT STANDARDS
C0-6	GENERAL NOTES
C0-7	CONSTRUCTION SEQUENCING PLAN
C0-8	OVERALL DEMOLITION PLAN
C1-1	EROSION CONTROL PLAN PHASE 1
C1-2	EROSION CONTROL PLAN PHASE 2
C1-3	EROSION CONTROL PLAN PHASE 3
C1-4	EROSION CONTROL PLAN FINAL PHASE
C2-0	OVERALL SITE PLAN
C2-1	SITE PLAN
C2-2	SITE PLAN
C2-3	SITE PLAN
C2-4	ROAD PLAN PROFILE - STREET B
C2-5	ROAD PLAN PROFILE - STREET A
C2-6	TRUCK TURN
C2-7	SIGHT DISTANCE PLAN AND PROFILES
C3-0	OVERALL GRADING AND DRAINAGE PLAN
C3-1	GRADING AND DRAINAGE PLAN
C3-2	GRADING AND DRAINAGE PLAN
C3-3	GRADING AND DRAINAGE PLAN
C3-4	GRADING DETAIL PLAN-A
C3-5	GRADING DETAIL PLAN-B
C3-6	GRADING DETAIL PLAN-C
C4-0	OVERALL UTILITY PLAN
C4-1	UTILITY PLAN
C4-2	UTILITY PLAN
C4-3	UTILITY PLAN
C4-4	UTILITY PROFILES
C5-0	TRAFFIC CONTROL PLAN
C6-0	EROSION CONTROL DETAILS
C6-1	SITE DETAILS
C6-2	SITE DETAILS
C6-3	STORM DRAINAGE DETAILS
C6-4	UTILITY DETAILS
C6-5	UTILITY DETAILS
C7-0	DRAINAGE AREA MAP
C8-0	BUILDING LIGHTING PLAN
L1-0	OVERALL LANDSCAPE PLAN

L1-1	LANDSCAPE ENLARGEMENT 1
L1-2	LANDSCAPE ENLARGEMENT 2
L1-3	LANDSCAPE ENLARGEMENT 3
L1-4	LANDSCAPE ENLARGEMENT 4
L1-5	LANDSCAPE DETAILS
L1-6	LANDSCAPE DETAILS
R0-0	ROADWAY GENERAL NOTES
R0-1	PEDESTRIAN ISLAND DETAILS
R0-2	TYPICAL SECTIONS
R1-1	ROADWAY PLANS MONTFORD DRIVE
R1-2	ROADWAY PLANS PARK ROAD
R1-3	ROADWAY PLANS PARK ROAD
R2-0	TRAFFIC CONTROL NOTES
R2-1	TRAFFIC CONTROL PLAN PHASE 1
R2-2	TRAFFIC CONTROL PLAN PHASE 1
R3-0	PAVEMENT MARKING AND SIGNING
R3-1	PAVEMENT MARKING AND SIGNING
R3-2	PAVEMENT MARKING AND SIGNING
R4-0	CROSS SECTIONS
R4-1	CROSS SECTIONS
R4-2	CROSS SECTIONS
R4-3	CROSS SECTIONS
R4-4	CROSS SECTIONS



FINAL
APPROVAL

ENGINEERING
PCO / DETENTION / DRAINAGE PLAN

EROSION CONTROL

URBAN FORESTRY
TREE ORDINANCE

CDOT

PLANNING
UMUDD / MUDD / PED / TOD

NOTE: THIS PLAN APPROVAL DOES NOT
INCLUDE COMMERCIAL ZONING. ALL BUILDING
PERMITS AND ZONING APPROVALS CAN BE
OBTAINED AT MECKLENBURG COUNTY CODE
ENFORCEMENT. PLEASE CALL CTAC AT
704-314-CODE(2633) FOR MORE INFORMATION.

NOTE: SCHEDULE PRE-CONSTRUCTION MEETING
AT LEAST 48 HRS. PRIOR TO ANY LAND
DISTURBING ACTIVITY USING THE ONLINE
FORM AT <http://development.charmeck.org>

APPROVED FOR
CONSTRUCTION

CHARLOTTE-MECKLENBURG PLANNING DEPARTMENT
By: Joshua Weaver 8-3-2016 1of 5

APPROVED

By Brendan Smith at 12:03 pm, Aug 03, 2016

APPROVED

APPROVED

APPROVED

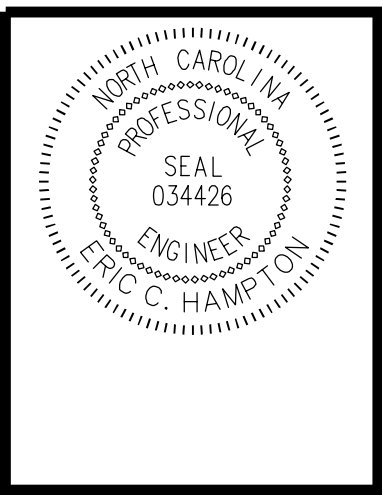
APPROVED



Know what's below.
Call before you dig.

PREPARED BY:

Kimley»horn

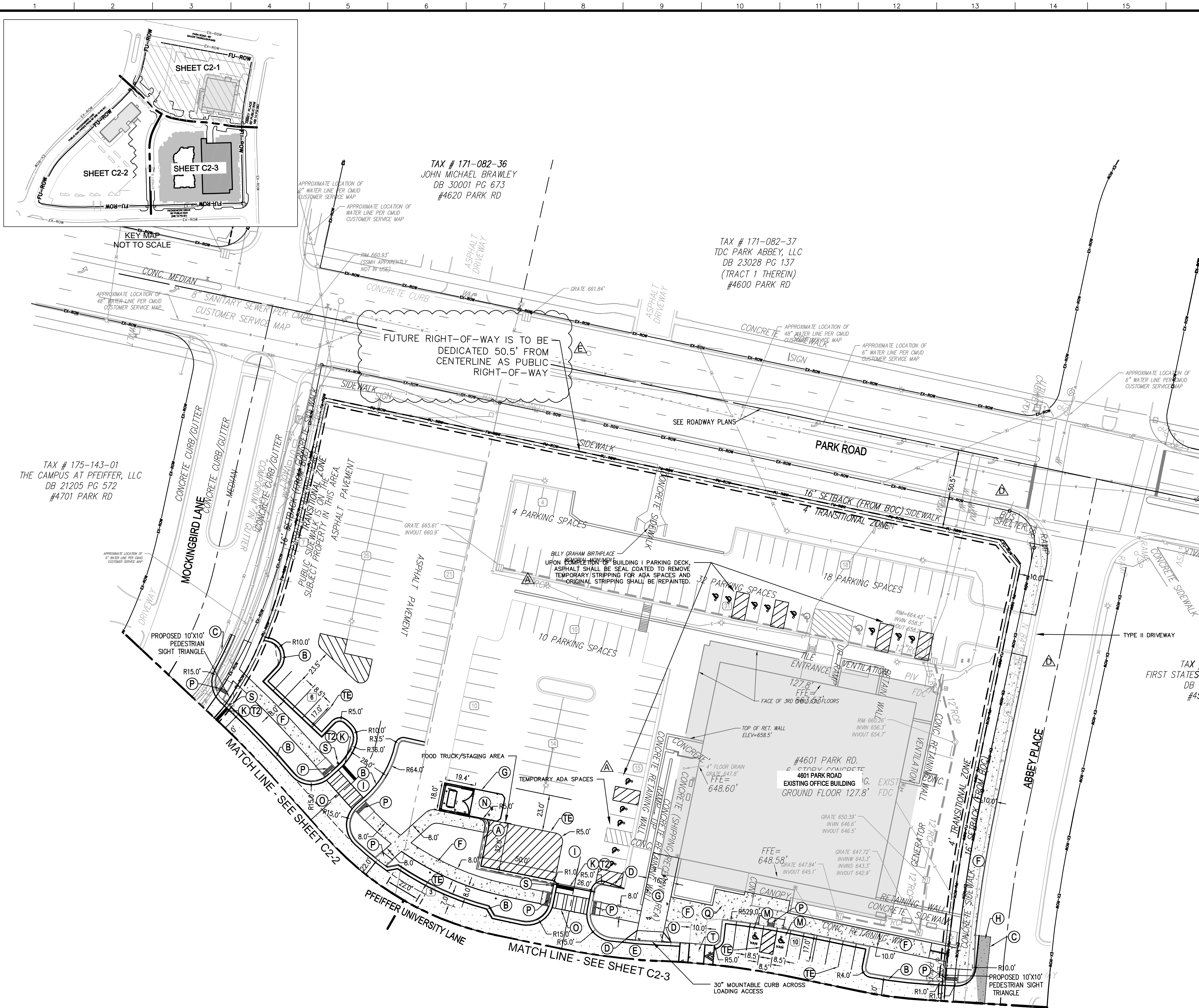


F	7/29/16	REVISED PCCO TABLE	C3-0
E	7/12/16	REVISED PER COUNTY AND CITY COMMENTS	ALL
D	6/03/16	REVISED PER COUNTY AND CITY COMMENTS	ALL
C	5/16/16	CYCLE #2 PERMIT COMMENTS	ALL
B	5/9/16	CYCLE #1 PERMIT COMMENTS	ALL
A	4/25/16	REVISED PER CITY COMMENTS	ALL
REV.	DATE	REVISIONS	PAGES
	DATE	FILE NUMBER	SHEET NUMBER
	04/25/2016	017079000	C0-0
			TOTAL SHEETS
			68

NC LICENSE #0-0102
COPYRIGHT © 2016
KIMLEY-HORN AND ASSOCIATES, INC.

July 12, 2016 - 10:26am By: AlexRichards

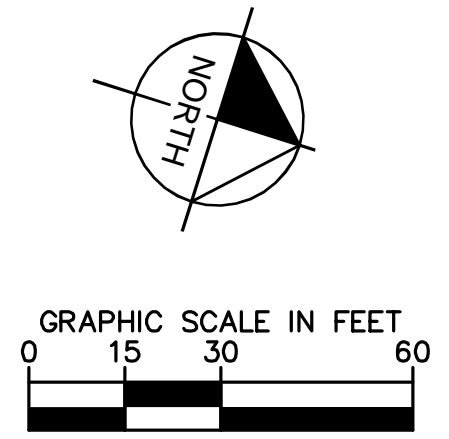
K:\CHL_PRA\017079_grubb_properties\000_park_road\link_apartments\c2-0 SITE PLAN.dwg



LEGEND FOR PROPOSED IMPROVEMENTS	
	PROPOSED BUILDING
	PROPOSED CURB AND GUTTER
	PROPOSED SITE NOTE
	PROPOSED HEAVY DUTY ASPHALT PAVEMENT
	PROPOSED STANDARD DUTY ASPHALT PAVEMENT
	PROPOSED STANDARD DUTY CONCRETE PAVEMENT
	PROPOSED HEAVY DUTY CONCRETE PAVEMENT
	PROPOSED HEAVY DUTY ASPHALT, PER CITY OF CHARLOTTE LOCAL OFFICE/COMMERCIAL STREET DETAIL
	PROPOSED SPECIALTY PLACEMENT
	PROPOSED STRUCTURE
	PARKING COUNT

SITE LEGEND	
	18" CONCRETE CURB AND GUTTER TYPICAL (SEE SITE DETAIL SHEET)
	30" CONCRETE CURB AND GUTTER TYPICAL (SEE SITE DETAIL SHEET)
	FULL DEPTH SAW CUT
	CURB TRANSITION (SEE SITE DETAIL SHEET)
	HEAVY DUTY ASPHALT PAVEMENT (SEE SITE DETAIL SHEET)
	STANDARD DUTY CONCRETE SIDEWALK (SEE SITE DETAIL SHEET)
	HEAVY DUTY CONCRETE PAVEMENT (SEE SITE DETAIL SHEET)
	CITY OF CHARLOTTE ASPHALT PAVEMENT (SEE SITE DETAIL SHEET)
	STANDARD DUTY ASPHALT PAVEMENT (SEE SITE DETAIL SHEET)
	CONCRETE TRANSFORMER PAD WITH CONCRETE FILLED PIPE BOLLARDS. CONTRACTOR TO COORDINATE WITH LOCAL POWER COMPANY FOR DETAILS.
	PAINTED STOP BAR (SEE SITE DETAIL SHEET)
	PAINTED DIRECTIONAL ARROW, TYPICAL (SEE SITE DETAIL SHEET)
	ACCESSIBLE PARKING SPACE TYPICAL. SEE SITE DETAIL SHEET FOR ACCESSIBLE PARKING SPACE SIZE AND SIGN ("VAN"-INDICATES VAN ACCESSIBLE SPACE)
	DUMPSTER AND RECYCLE AREA. (SEE SITE DETAIL SHEET)
	ADA PEDESTRIAN CROSSWALK (SEE HARDSCAPE PLAN)
	HANDICAP ACCESSIBLE RAMP WITH TRUNCATED DOMES (SEE SITE DETAIL SHEET)
	SHORT TERM BICYCLE PARKING - LANDSCAPE FORMS MULTIPLICITY W/7 BIKE CAPACITY. (SEE SITE DETAIL SHEET)
	LONG TERM BICYCLE PARKING (SEE DETAIL SHEET AND REFER TO ARCHITECTURE PLANS FOR MULTIFAMILY LOCATION)
	STOP SIGN (SEE SITE DETAIL SHEET)
	TABLETOP CROSSWALK (SEE SITE DETAIL SHEET)
	DUKE ENERGY LIGHT POLE BASE TYPICAL (SEE UTILITY DETAIL SHEET)
	5'x5' CONCRETE SAW CUT PATTERN EXPANSION JOINTS 35' ON CENTER AND ALL MATERIAL CHANGES
	STRUCTURAL RETAINING WALL WITH PEDESTRIAN HANDRAIL (CONTRACTOR TO PROVIDE FULL ENGINEERED PLANS AND SHALL PERMIT THROUGH COUNTY)

STRIPING LEGEND	
	PAINT (4" WHITE, 120 MILS) SOLID LANE LINE
	PAINT (24" WHITE, 120 MILS) STOP BAR



Kimley»Horn

NC LICENSE #F-0102
200 SOUTH TRYON ST.
SUITE 200
CHARLOTTE, NC 28202
PHONE: (704) 333-5131

© 2016

NORTH CAROLINA
PROFESSIONAL
SEAL
034426
ENGINEER
ERIC C. HAMPTON

Jul 12 2016 4:10 PM

E	7/12/16	REVISED PER COUNTY AND CITY COMMENTS	NO.	DATE
D	6/03/16	REVISED PER COUNTY AND CITY COMMENTS		
C	5/16/16	CYCLE #2 PERMIT COMMENTS		
B	5/09/16	CYCLE #1 PERMIT COMMENTS		
A	4/25/16	REVISED PER CITY COMMENTS		

CLIENT: **GRUBB PROPERTIES**
People who care. Places that matter.

GRUBB PROPERTIES
4601 PARK RD SUITE 450
CHARLOTTE, NC 28209

PROJECT: **LINK APARTMENTS
MONTFORD - BUILDING 1**

TITLE: **SITE PLAN**

DESIGNED BY: TEB
DRAWN BY: AMW
CHECKED BY: ECH

DATE: 04/25/2016

PROJECT#: 017079000

C2-1



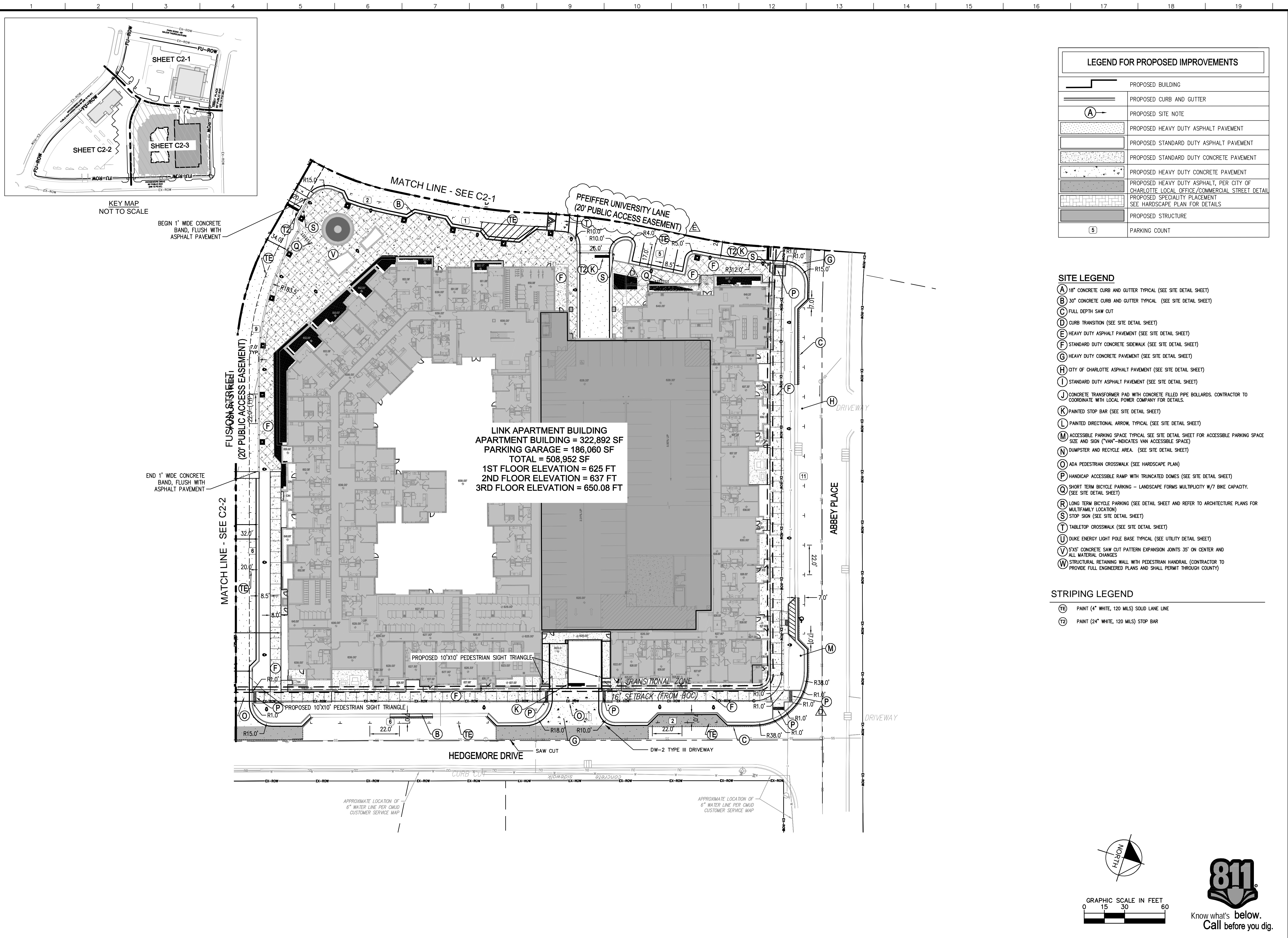
SITE LEGEND

A	18" CONCRETE CURB AND GUTTER TYPICAL (SEE SITE DETAIL SHEET)
B	30" CONCRETE CURB AND GUTTER TYPICAL (SEE SITE DETAIL SHEET)
C	FULL DEPTH SAW CUT
D	CURB TRANSITION (SEE SITE DETAIL SHEET)
E	HEAVY DUTY ASPHALT PAVEMENT (SEE SITE DETAIL SHEET)
F	STANDARD DUTY CONCRETE SIDEWALK (SEE SITE DETAIL SHEET)
G	HEAVY DUTY CONCRETE PAVEMENT (SEE SITE DETAIL SHEET)
H	CITY OF CHARLOTTE ASPHALT PAVEMENT (SEE SITE DETAIL SHEET)
I	STANDARD DUTY ASPHALT PAVEMENT (SEE SITE DETAIL SHEET)
J	CONCRETE TRANSFORMER PAD WITH CONCRETE FILLED PIPE BOLLARDS. CONTRACTOR TO COORDINATE WITH LOCAL POWER COMPANY FOR DETAILS.
K	PAINTED STOP BAR (SEE SITE DETAIL SHEET)
L	PAINTED DIRECTIONAL ARROW, TYPICAL (SEE SITE DETAIL SHEET)
M	ACCESSIBLE PARKING SPACE TYPICAL SEE SITE DETAIL SHEET FOR ACCESSIBLE PARKING SPACE SIZE AND SIGN ("VAN"-INDICATES VAN ACCESSIBLE SPACE)
N	DUMPSITER AND RECYCLE AREA. (SEE SITE DETAIL SHEET)
O	ADA PEDESTRIAN CROSSWALK (SEE HARDSCAPE PLAN)
P	HANDICAP ACCESSIBLE RAMP WITH TRUNCATED DOMES (SEE SITE DETAIL SHEET)
Q	SHORT TERM BICYCLE PARKING – LANDSCAPE FORMS MULTIPLICITY W/7 BIKE CAPACITY. (SEE SITE DETAIL SHEET)
R	LONG TERM BICYCLE PARKING (SEE DETAIL SHEET AND REFER TO ARCHITECTURE PLANS FOR MULTIFAMILY LOCATION)
S	STOP SIGN (SEE SITE DETAIL SHEET)
T	TABLETOP CROSSWALK (SEE SITE DETAIL SHEET)
U	DUKE ENERGY LIGHT POLE BASE DETAIL (SEE UTILITY DETAIL SHEET)
V	5'X5' CONCRETE SAW CUT PATTERN EXPANSION JOINTS 35' ON CENTER AND ALL MATERIAL CHANGES
W	STRUCTURAL RETAINING WALL WITH PEDESTRIAN HANDRAIL (CONTRACTOR TO PROVIDE FULL ENGINEERED PLANS AND SHALL PERMIT THROUGH COUNTY)

STRIPING LEGEND

(TE)	PAINT (4" WHITE, 120 MILS) SOLID LANE LINE
(T2)	PAINT (24" WHITE, 120 MILS) STOP BAR





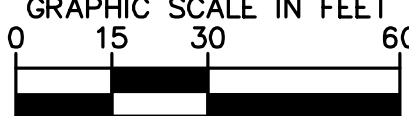
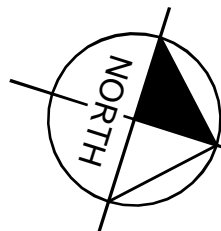
LEGEND FOR PROPOSED IMPROVEMENTS	
	PROPOSED BUILDING
	PROPOSED CURB AND GUTTER
	PROPOSED SITE NOTE
	PROPOSED HEAVY DUTY ASPHALT PAVEMENT
	PROPOSED STANDARD DUTY ASPHALT PAVEMENT
	PROPOSED STANDARD DUTY CONCRETE PAVEMENT
	PROPOSED HEAVY DUTY CONCRETE PAVEMENT
	PROPOSED HEAVY DUTY ASPHALT, PER CITY OF CHARLOTTE LOCAL OFFICE/COMMERCIAL STREET DETAIL
	PROPOSED SPECIALTY PLACEMENT
	PROPOSED STRUCTURE
	PARKING COUNT

SITE LEGEND

- (A) 18" CONCRETE CURB AND GUTTER TYPICAL (SEE SITE DETAIL SHEET)
(B) 30" CONCRETE CURB AND GUTTER TYPICAL (SEE SITE DETAIL SHEET)
(C) FULL DEPTH SAW CUT
(D) CURB TRANSITION (SEE SITE DETAIL SHEET)
(E) HEAVY DUTY ASPHALT PAVEMENT (SEE SITE DETAIL SHEET)
(F) STANDARD DUTY CONCRETE SIDEWALK (SEE SITE DETAIL SHEET)
(G) HEAVY DUTY CONCRETE PAVEMENT (SEE SITE DETAIL SHEET)
(H) CITY OF CHARLOTTE ASPHALT PAVEMENT (SEE SITE DETAIL SHEET)
(I) STANDARD DUTY ASPHALT PAVEMENT (SEE SITE DETAIL SHEET)
(J) CONCRETE TRANSFORMER PAD WITH CONCRETE FILLED PIPE BOLLARDS. CONTRACTOR TO COORDINATE WITH LOCAL POWER COMPANY FOR DETAILS.
(K) PAINTED STOP BAR (SEE SITE DETAIL SHEET)
(L) PAINTED DIRECTIONAL ARROW, TYPICAL (SEE SITE DETAIL SHEET)
(M) ACCESSIBLE PARKING SPACE TYPICAL. SEE SITE DETAIL SHEET FOR ACCESSIBLE PARKING SPACE SIZE AND SIGN ("VAN"-INDICATES VAN ACCESSIBLE SPACE)
(N) DUMPSTER AND RECYCLE AREA. (SEE SITE DETAIL SHEET)
(O) ADA PEDESTRIAN CROSSWALK (SEE HARDSCAPE PLAN)
(P) HANDICAP ACCESSIBLE RAMP WITH TRUNCATED DOMES (SEE SITE DETAIL SHEET)
(Q) SHORT TERM BICYCLE PARKING - LANDSCAPE FORMS MULTIPLICITY W/7 BIKE CAPACITY. (SEE SITE DETAIL SHEET)
(R) LONG TERM BICYCLE PARKING (SEE DETAIL SHEET AND REFER TO ARCHITECTURE PLANS FOR MULTIFAMILY LOCATION)
(S) STOP SIGN (SEE SITE DETAIL SHEET)
(T) TABLETOP CROSSWALK (SEE SITE DETAIL SHEET)
(U) DUKE ENERGY LIGHT POLE BASE TYPICAL (SEE UTILITY DETAIL SHEET)
(V) 5'x5' CONCRETE SAW CUT PATTERN EXPANSION JOINTS 35' ON CENTER AND ALL MATERIAL CHANGES
(W) STRUCTURAL RETAINING WALL WITH PEDESTRIAN HANDRAIL (CONTRACTOR TO PROVIDE FULL ENGINEERED PLANS AND SHALL PERMIT THROUGH COUNTY)

STRIPING LEGEND

- (TE) PAINT (4" WHITE, 120 MILS) SOLID LANE LINE
(TZ) PAINT (24" WHITE, 120 MILS) STOP BAR



Kimley»Horn
NC LICENSE #F-0102
200 SOUTH TRYON ST.
SUITE 200
CHARLOTTE, NC 28202
PHONE: (704) 333-5131

© 2016

ERIC C. HAMPTON
JUL 12 2016 4:10 PM

NO.	DATE	REVISIONS
E	7/12/16	REVISED PER COUNTY AND CITY COMMENTS
D	6/03/16	REVISED PER COUNTY AND CITY COMMENTS
C	5/16/16	CYCLE #2 PERMIT COMMENTS
B	5/09/16	CYCLE #1 PERMIT COMMENTS
A	4/25/16	REVISED PER CITY COMMENTS

CLIENT: **GRUBB PROPERTIES**
People who care. Places that matter.
GRUBB PROPERTIES
4601 PARK RD SUITE 450
CHARLOTTE, NC 28209

PROJECT: **LINK APARTMENTS
MONTFORD - BUILDING 1**

TITLE: **SITE PLAN**

DESIGNED BY: TEB
DRAWN BY: AMW
CHECKED BY: ECH
DATE: 04/25/2016
PROJECT#: 017079000

C2-3