

Solis Waverly

City of Charlotte, Mecklenburg County, North Carolina

Terwilliger Pappas

APPROVED FOR  
CONSTRUCTION  
CHARLOTTE-MECKLENBURG PLANNING DEPARTMENT  
By Brent Wilkinson 2/25/15

DEVELOPER

Terwilliger Pappas  
111 East Hargett Street, Suite 300  
Raleigh, NC 27601  
919.995.1259

LANDSCAPE ARCHITECT/  
CIVIL ENGINEER

LandDesign, Inc.  
223 North Graham St.  
Charlotte, NC 28202  
704.333.0325

ARCHITECT

The Preston Partnership  
115 Perimeter Center Place  
Atlanta, GA 30346  
770.396.7248

SURVEYOR

R.B. Pharr and Associates  
420 Hawthorne Lane  
Charlotte, NC 28204

SHEET INDEX:

Chapter 1 - Existing Conditions  
C-1.0 Cover Sheet  
C-1.1 Existing Conditions Plan  
RZ-1 - RZ-6 Rezoning Plans

Chapter 2 - Site Plan  
C-2.0 Overall Layout Plan  
C-2.1 - C-2.3 Detailed Layout Plan  
C-2.4 - C-2.9 Site Details  
C-2.10 Street Paving  
C-2.11 Fire Truck Access  
C-2.12 ISD and Signage  
C-2.13 Duke Lighting Plan  
C-2.14 Road Sections  
C-2.15 - C-2.17 Road Plan and Profile

Chapter 3 - Grading and Storm Drainage  
C-3.0 Overall Grading Plan  
C-3.1 - C-3.4 Detailed Grading Plan  
C-3.5 Overall Storm Drainage Plan  
C-3.6 - C-3.8 Storm Drainage Plan  
C-3.9 - C-3.11 Storm Drainage Area Plan  
C-3.12 Storm Drainage Chart  
C-3.13 - C-3.17 Storm Drainage Details

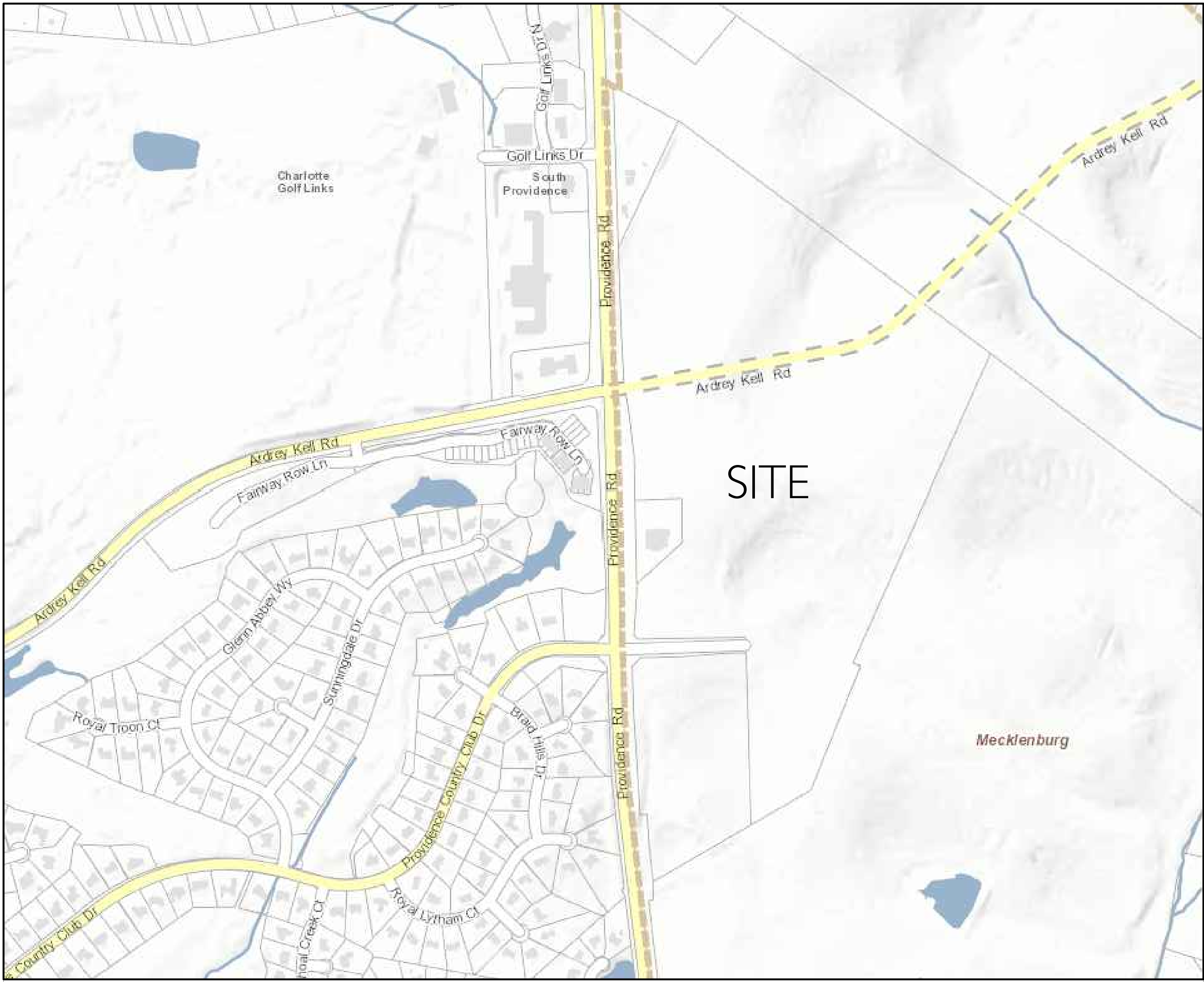
Chapter 4 - Erosion Control  
C-4.0 Phase 2 Erosion Control  
C-4.1 Erosion Control Details

Chapter 5 - Utility  
C-5.0 Sanitary Sewer and Public Water Plan  
C-5.1 - C-5.4 Private Water Plan  
C-5.5 - C-5.6 Utility Details

Chapter 6 - Planting and Amenity  
L-1.0 Required Planting Plan  
L-1.1 Required Planting Details  
L-1.2 Overall Planting Plan  
L-1.3 - L-1.7 Detailed Planting Plan

L-1.8 Pool Lighting Plan  
SP-1 - SP-10 Pool Plan

IR-1 Overall Irrigation Plan  
IR-2 - IR-5 Detailed Irrigation Plan



VICINITY MAP  
N.T.S.



<http://development.charmeck.org>

ENGINEERING  
PCO / DETENTION / DRAINAGE PLAN

APPROVED  
By Brendan Smith (bansmith@charlottemc.gov) at 10:39 am, Feb 25, 2015

EROSION CONTROL  
NOTE: SCHEDULE PRE-CONSTRUCTION MEETING AT LEAST 48 HRS. PRIOR TO ANY LAND DISTURBING ACTIVITY USING THE ONLINE FORM AT <http://development.charmeck.org>

APPROVED  
By Brendan Smith (bansmith@charlottemc.gov) at 10:39 am, Feb 25, 2015

URBAN FORESTRY  
TREE ORDINANCE

APPROVED

CDOT

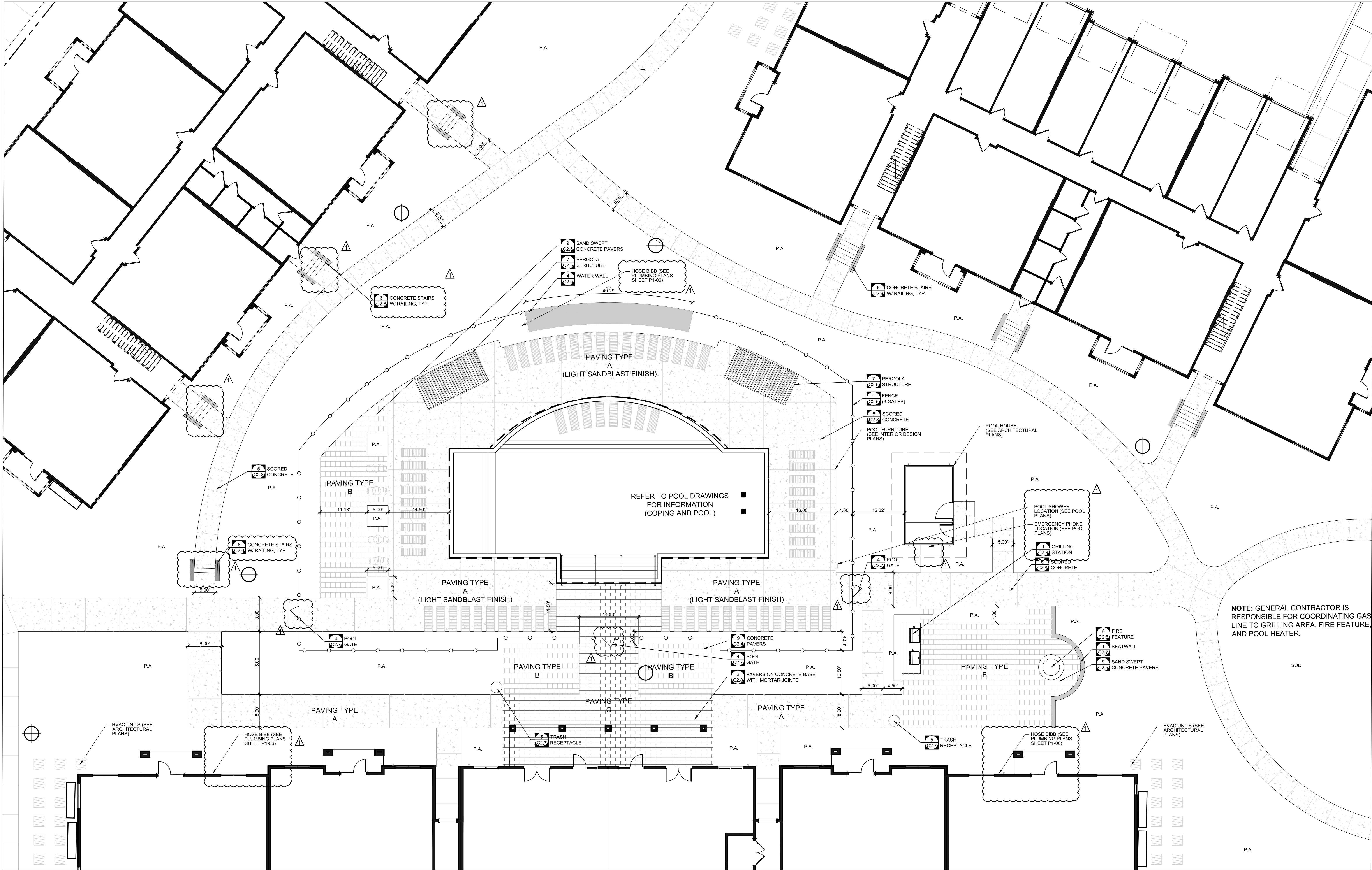
APPROVED

PLANNING  
UMUDD / MUDD / PED / TOD

APPROVED

NOTE: THIS PLAN APPROVAL DOES NOT INCLUDE COMMERCIAL ZONING. ALL BUILDING PERMITS AND ZONING APPROVALS CAN BE OBTAINED AT MECKLENBURG COUNTY CODE ENFORCEMENT. PLEASE CALL CTAC AT 704-336-3829 FOR MORE INFORMATION.





POOL AREA

- PAVING MATERIAL A**  
- SCORED CONCRETE  
(LIGHT SANDBLAST FINISH FOR CONCRETE WITHIN POOL FENCE ONLY AND FOR DEDUCT ALTERNATE AREAS)
- PAVING MATERIAL B**  
- PAVESTONE HOLLAND CONCRETE PAVER:  
4"X8" CHICAGO BLEND HERITAGE SERIES COLOR
- PAVING MATERIAL C**  
- PAVESTONE HOLLAND CONCRETE PAVER:  
4"X8" BUFF HERITAGE SERIES COLOR
- PAVING MATERIAL D**  
- DECOMPOSED GRANITE FINES

**DEDUCT ALTERNATE:**  
REPLACE ALL PAVERS IN POOL AREA WITH PAVING MATERIAL A (LIGHT SANDBLAST FINISH)



**SOLIS WAVERLY**  
City of Charlotte, Mecklenburg County, North Carolina  
Terwilliger Pappas  
**DETAILED LAYOUT PLAN**

**REVISIONS:**  
DATE: January 15, 2015  
DESIGNED BY: KST  
CHECKED BY: KST  
O.C. BY: KST  
PROJECT #: 1013199  
SHEET #:  
**C-2.1**

**LandDesign**  
223 N Graham Street, Charlotte, NC 28202  
V: 704.333.0325 F: 704.332.3246  
www.LandDesign.com

**LANDDESIGN INC.**  
CORPORATE  
SEAL  
NORTH CAROLINA  
Jas. Powell  
SEAL  
30866  
LANDSCAPE ARCHITECT  
EXPIRATION 12/31/2015  
2/25/15