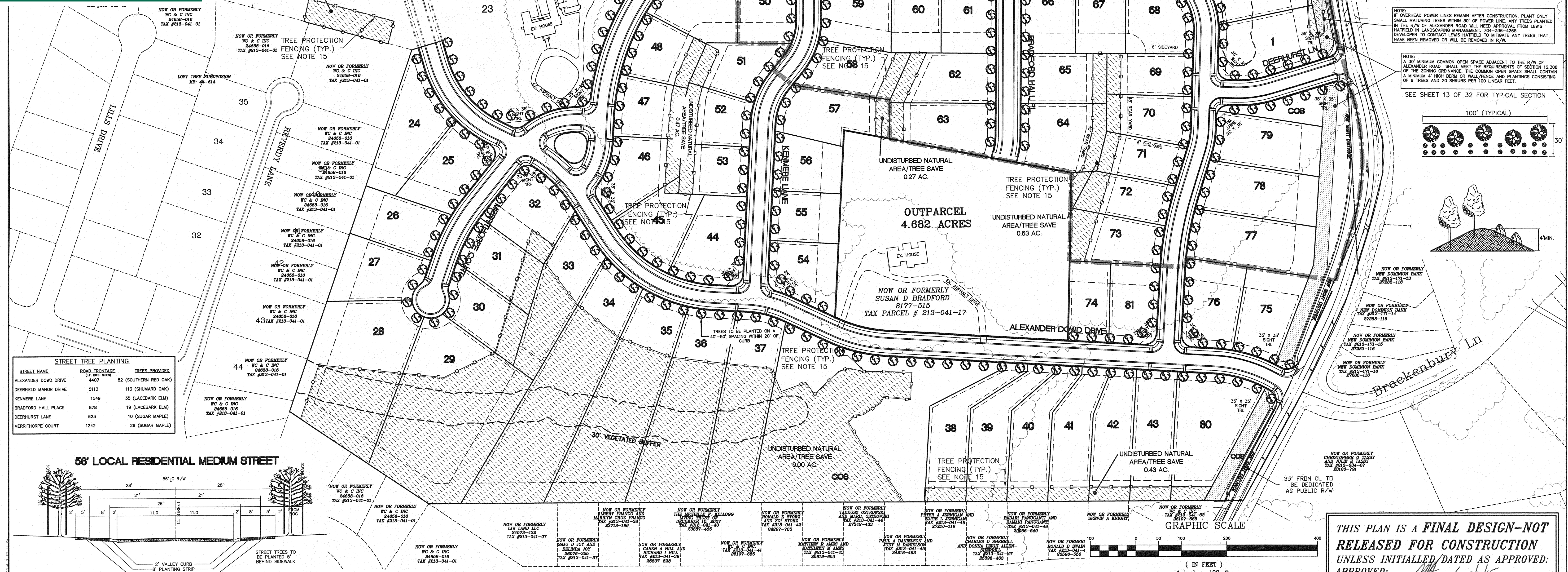


REVISION  
APPROVED FOR CONSTRUCTION  
By: Joshua Weaver 10/30/2015 2of 3

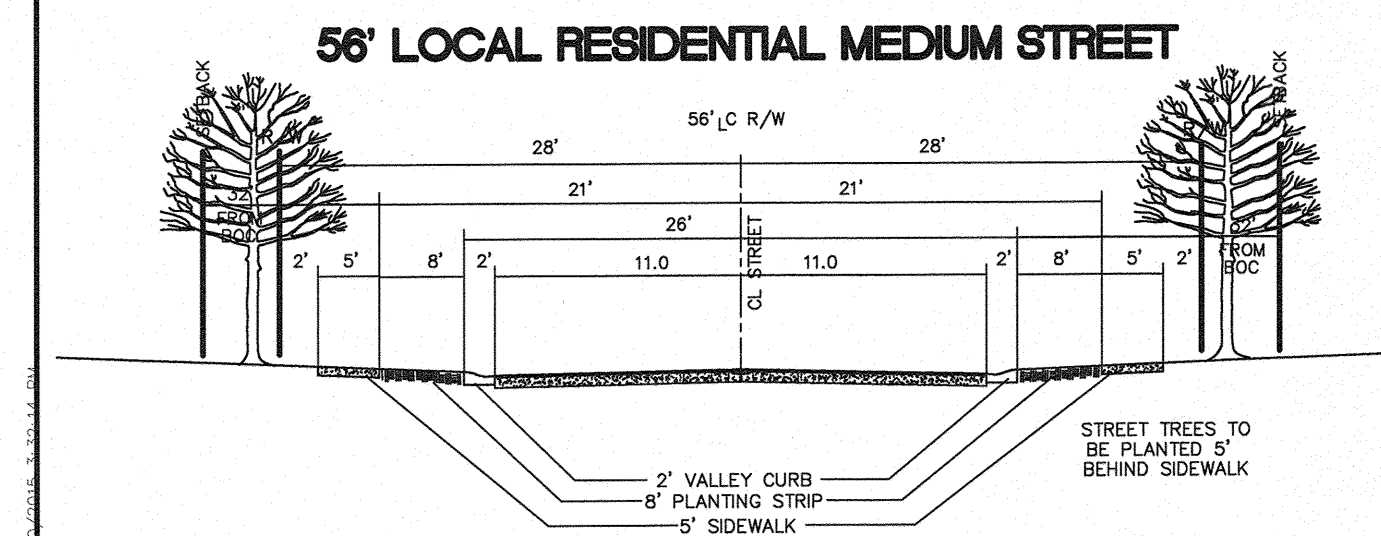
APPROVED  
By Brendan Smith at 1:06 pm, Oct 30, 2015

APPROVED  
PHASE 1

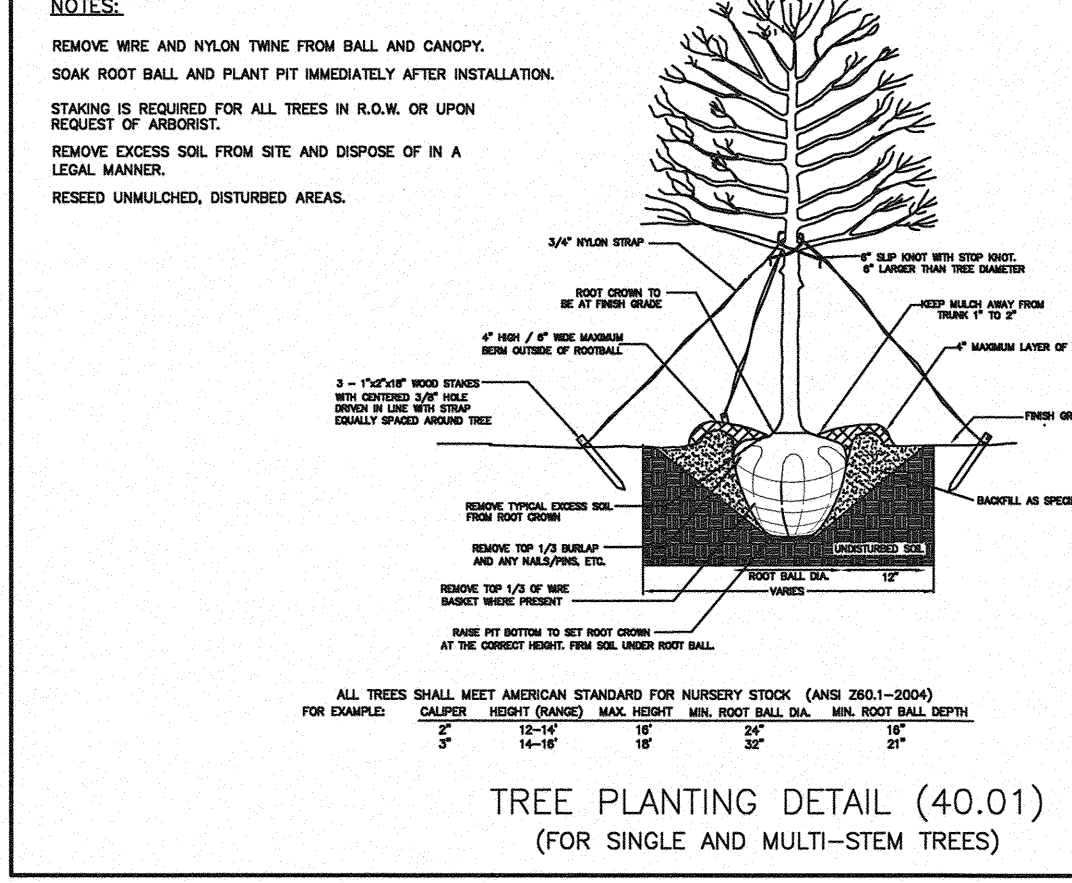
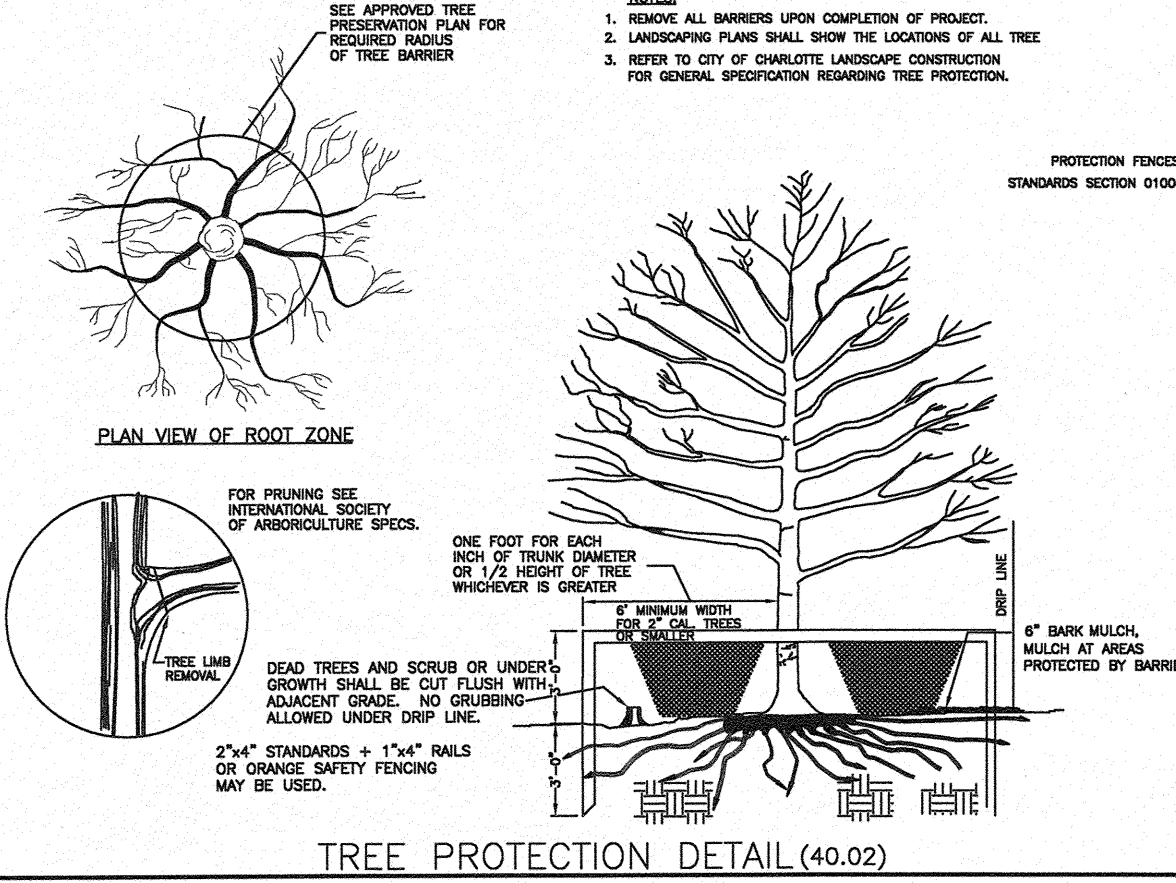
APPROVED  
APPROVED



STREET TREE PLANTING		
STREET NAME	ROAD FRONTAGE (Ft. from curb)	TREES PROVIDED
ALEXANDER DOND DRIVE	4407	82 (SOUTHERN RED OAK)
DEERFIELD MANOR DRIVE	5113	113 (SHUMARD OAK)
KENNER LANE	1549	35 (LACEBARK ELM)
BRADFORD HALL PLACE	878	19 (LACEBARK ELM)
DEERHURST LANE	623	10 (SUGAR MAPLE)
MERRITHORPE COURT	1242	28 (SUGAR MAPLE)



- Tree Planting Notes and Requirements**
- (1) All strapping and top 2/3 of wire basket must be cut away and removed from the root ball prior to backfilling planting pit. Remove top 1/3 of the burlap from root ball.
  - (2) For new planting areas, remove all pavement, gravel sub-base and construction debris; remove compacted soil and add 24" new topsoil-or-uncompact and amend the top 24" of existing soil to meet topsoil/planting mix standards for trees (within entire minimum area of 274 square feet per tree). Call 704-336-4330 for an inspection of soil BEFORE planting trees.
  - (3) Large maturing trees may not be planted where overhead distribution or transmission lines exist. If trees conflict with power lines or signs, call the Urban Forester to resolve BEFORE planting.
  - (4) New trees shall be 3" caliper for street tree requirements. Supplemental trees shall be 1 1/2" caliper if planted in individual lots, and 3/4" caliper if planted in common open space.
  - (5) Perimeter/street trees to be planted within 20 ft. from the back of curb.
  - (6) Common open space must be recorded on plot to plant 3/4" trees. Otherwise plant 1 1/2" caliper large maturing shade trees.
  - (7) Minimum tree size at planting is 2-inch caliper, with 3-inch caliper required for MX zoning (for single stem trees). Trees must meet ANSI standards and have single leader all the way to the top. All multi-stem plants must be true form, maximum 3 to 5 trunks, and minimum 8 feet tall.
  - (8) Large maturing trees must be a minimum 25 to 30 feet from the overhead distribution or transmission lines. If trees conflict with power lines or signs, call Urban Forester to resolve BEFORE planting.
  - (9) A minimum of fifty (50) percent of new trees must be native species, and sites with more than twenty (20) trees required will have to install multiple specimens pursuant to the Tree Ordinance Guidelines.
  - (10) Site lighting must be a minimum thirty (30) feet away from a tree. If pedestrian scale lighting is being used, then lighting must be a minimum of fifteen (15) feet away from a tree, unless approved otherwise by the City. Show site lighting plan. No light poles in tree islands.
  - (11) Adjust tree planting locations to avoid underground utilities. Plant 15' from underground utilities (gas, water, telephone, and electrical lines).
  - (12) Attention landscaper: Notify Urban Forester of any sign, power line, or other conflicts BEFORE planting new trees.
  - (13) Please call (704) 336-4330 for an inspection of tree protection and/or tree planting areas, 1 to 2 days before the Certificate of Occupancy is needed.
  - (14) Unless approved by Urban Forestry staff, all required trees must have single stem trunks with no co-dominant trunks or branches. Tree trunks shall be straight in form and free of damage or cracks. Pruning shall be calicoused over. Branch length shall be typical for the tree's age and not be broken, diseased, or injured. Root flare shall be located at grade and be free of adventitious root growth.
  - (15) All tree protection to be installed prior to grading and inspected by urban forester.
- Proposed large maturing tree from the approved Charlotte-Mecklenburg tree list.



- NOTES:**
- (1) VALUES:  
NET TOTAL SITE AREA = 69.73 AC.  
TREE SAVE AREA PROVIDED = 12.304 AC. (17.64%)
  - (2) TREE SAVE AREAS SHALL BE FLAGGED IN FIELD FOR URBAN FORESTRY VERIFICATION.
  - (3) ALL PLANTED STREET TREES, LARGE MATURING TREES SELECTED FROM THE CITY OF CHARLOTTE TREE PLANTING LIST.
  - (4) NUMBER OF STREET TREES PROVIDED = 298  
AVERAGE SPACING BETWEEN TREES 40 - 50 FT.
  - (5) TREE SAVE AREA SHALL BE SHOWN WITH TREE PROTECTION MEASURES ON ALL PERTINENT SHEETS WITH A NOTE STATING TREE PROTECTION FENCE TO BE PLACED AT THE DIAPHRANE (PLUS FIVE) FEET, PRIOR TO ANY DEMOLITION OR GRADING ACTIVITY.
  - (6) ALL EXISTING AND PROPOSED UTILITIES (NOT TO PASS THROUGH TREE SAVE AREA) SHALL BE SHOWN.
  - (7) TREE PROTECTION BARRICADES MUST MEET OR EXCEED TREE PROTECTION GUIDELINES STANDARDS.
  - (8) TREE BARRICADES MUST BE INSTALLED BEFORE ANY DEMOLITION/GRADING/CONSTRUCTION, AND NOT REMOVED UNTIL AFTER FINAL INSPECTION BY URBAN FORESTRY STAFF.
  - (9) NO SOIL DISTURBANCE OR COMPACTION, CONSTRUCTION MATERIALS, TRAFFIC, BURIAL PITS, TRENDING OR OTHER LAND DISTURBING ACTIVITY ALLOWED IN TREE SAVE AREA.
  - (10) VIOLATIONS OF THE TREE PROTECTION REQUIREMENTS ARE SUBJECT TO FINES, AND/OR IMMEDIATE CORRECTIVE ACTION/MITIGATION.
  - (11) URBAN FORESTER MUST BE NOTIFIED OF THE PRE-CONSTRUCTION MEETING.

**THIS PLAN IS A FINAL DESIGN-NOT RELEASED FOR CONSTRUCTION UNLESS INITIALED/DATED AS APPROVED:**

APPROVED: [Signature] 10/30/15

GRAPHIC SCALE: 1 inch = 100 ft.

NO.	DATE	REVISION
1	10/20/15	REVISED LOTS PER BMP ADDITIONS
2	08/22/14	REVISED LOTS PER BMP ADDITIONS
3	11/17/13	PER CITY COMMENTS
4	09/18/13	PER CITY COMMENTS

SHEET TITLE: **TREE PLANTING PLAN**

PROJECT: **DEERFIELD PHASE 2**  
CITY OF CHARLOTTE, MECK. CO., N.C.  
FOR: KEN DOWD

YARBROUGH-WILLIAMS & HOULE, INC.  
Planning • Surveying • Engineering  
700 Windsor Oak Court Charlotte, NC 28203  
704.556.1500

230-82  
13, 32