

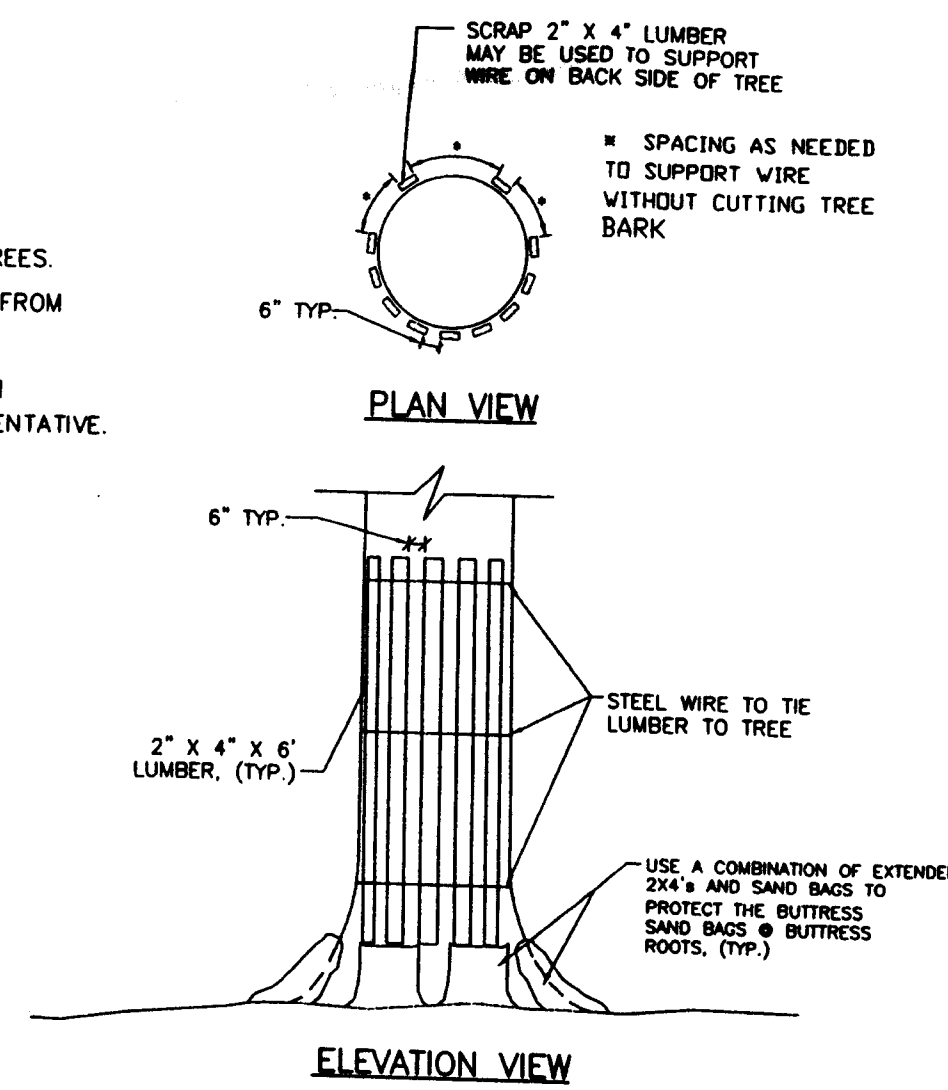
1 | DETAIL AT SCREENING

SCALE: NTS

2 | SECTION THRU AVANT SHOWING RELATIONSHIP BETWEEN THE MULTI-FAMILY ACROSS THE STREET

SCALE: NTS

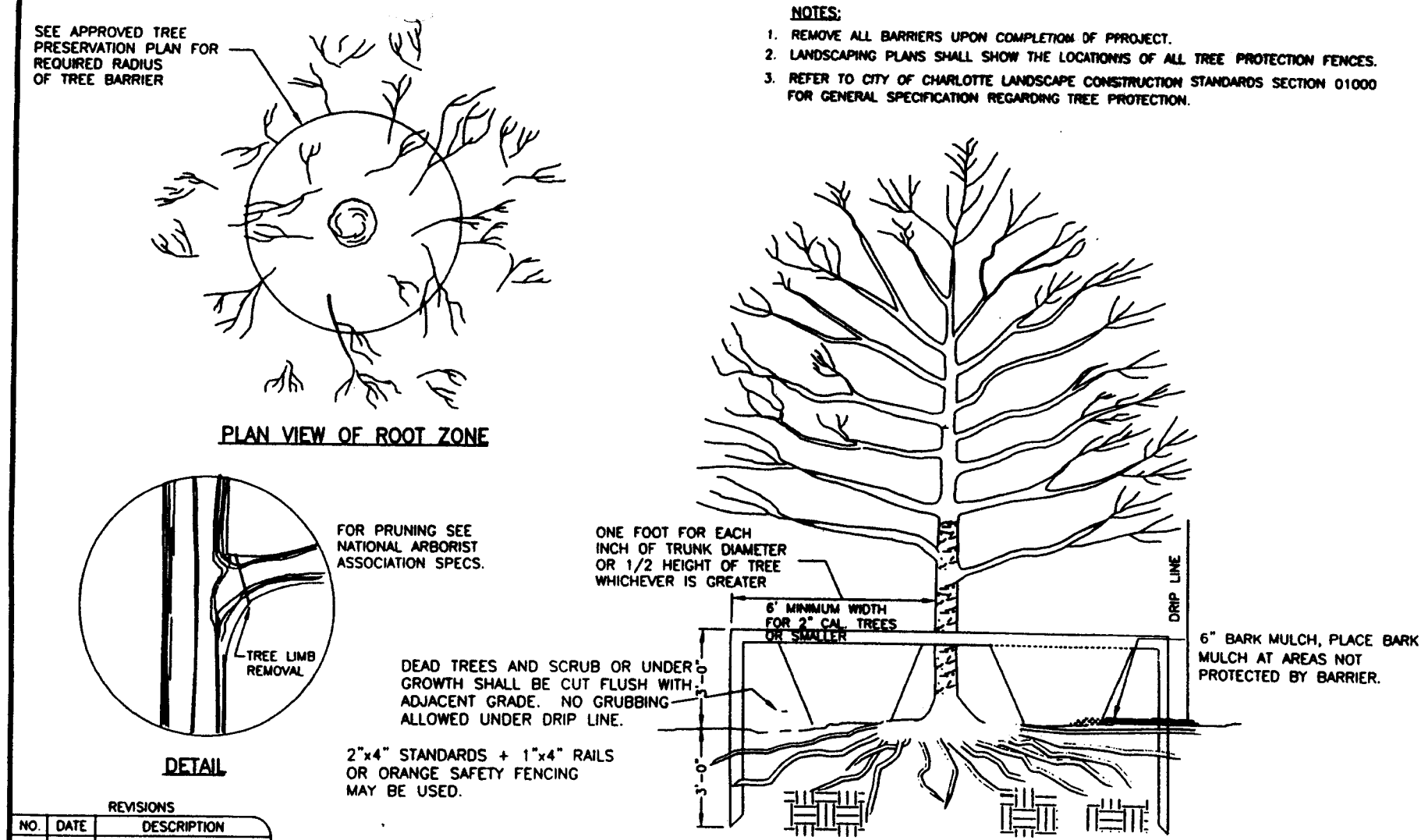
- NOTES:
1. THIS TREE BUMPER DETAIL SHALL BE USED WHEN WORKING WITHIN 10' OF AN EXISTING TREE TO BE PROTECTED.
 2. ALL TREES SHALL BE SAVED UNLESS NOTED OTHERWISE ON THE PLANS OR DIRECTED BY THE ENGINEER.
 3. LUMBER, WIRE, AND SANDBAGS MAY BE REUSED AT OTHER TREES.
 4. THE INTENT OF THIS DETAIL IS TO PROTECT EXISTING TREES FROM DAMAGE DURING CONSTRUCTION ESPECIALLY FROM BACKHOE ARM SWING. AN ALTERNATE APPROACH MAY BE USED IF APPROVED IN WRITING BY THE ENGINEER AFTER CONSULTATION WITH THE CITY ARBORIST OR HIS DULY AUTHORIZED REPRESENTATIVE.



CHARLOTTE - MECKLENBURG
LAND DEVELOPMENT
STANDARDS

TEMPORARY TREE PROTECTION DETAIL

SHEET NO. 40.13



CHARLOTTE - MECKLENBURG
LAND DEVELOPMENT
STANDARDS

TREE PROTECTION DETAIL

SHEET NO. 40.02

STONE HUNT (704) 604-4556
THE GROVE AT CHERRY TOWN HOMES
CHARLOTTE, NC

Millennium Design Group
ARCHITECTURE

THIS DOCUMENT IS THE PROPERTY OF
MILLENNIUM 3 DESIGN GROUP AND IS NOT
TO BE REPRODUCED IN WHOLE OR IN PART
WITHOUT THE PERMISSION OF THE ARCHITECT.

STONEHUNT (704) 604-4556
THE GROVE AT CHERRY
TOWN HOMES
CHARLOTTE, NC

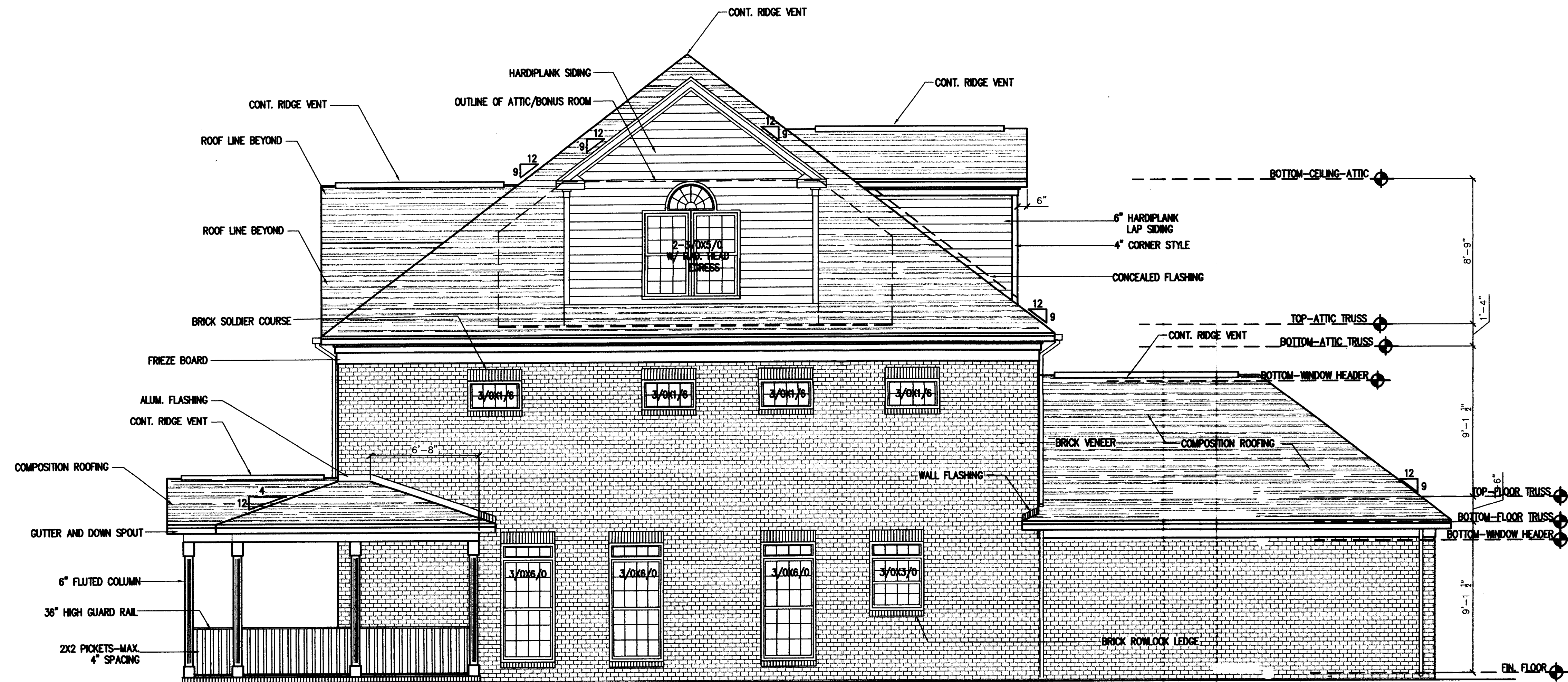
NO.	DATE	DESCRIPTION
1	4-11-07	PLANNING COMMENTS

DATE: 6-20-2007
SCALE: AS NOTED
DRAWN BY: HJJ
CHECKED BY: AMH
JOB NO.:
CAD FILE:

SHEET NO:

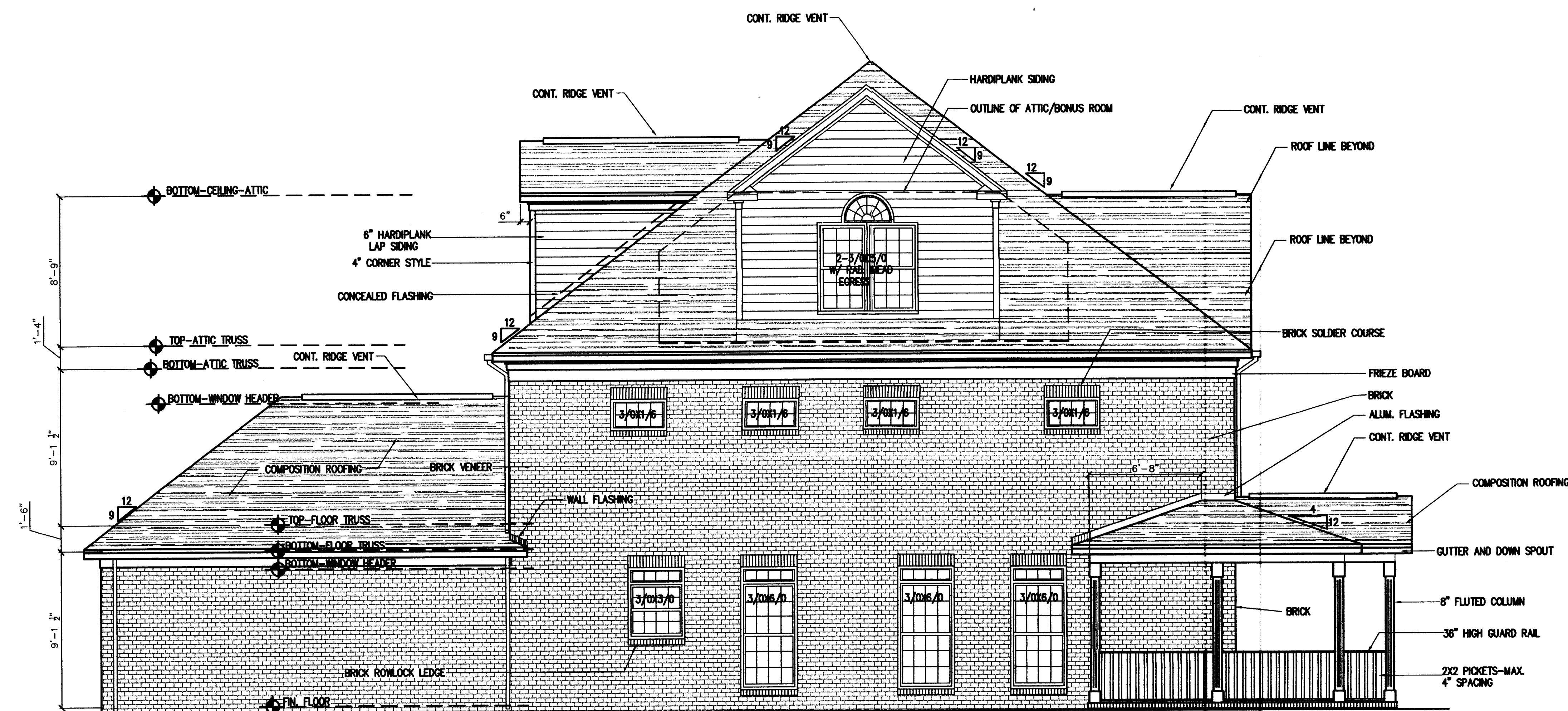
FOR PUBLIC HEARING
PETITION: 2007-128

C0101



2 RIGHT.SIDE.ELEVATION

SCALE:1/4"=1'-0"



1 LEFT.SIDE.ELEVATION

SCALE:1/4"=1'-0"

1333 N. Tryon St.
Charlotte, NC 28206
Tel: 704.333.8868
Fax: 704.376.7122
1333 N. Tryon St., Ste. 620
Tel: 919.666.6300
Fax: 919.666.8900

Millennium 3 Design Group
architects

PROJECT NO. 0706
DATE: 11/27/07
DRAWN BY: AVH
CHECKED BY: AVH
JOB NO. CHERRY HILL COMMUNITY
CAD FILE: 11.27.07 AFH

CONSULTANT'S LOGO

DESIGNER'S SEAL

THIS DOCUMENT IS THE PROPERTY OF
MILLENNIUM 3 DESIGN GROUP AND IS NOT TO
BE REPRODUCED IN WHOLE OR IN PART WITH
OUT THE PERMISSION OF THE ARCHITECT.

REVISIONS:

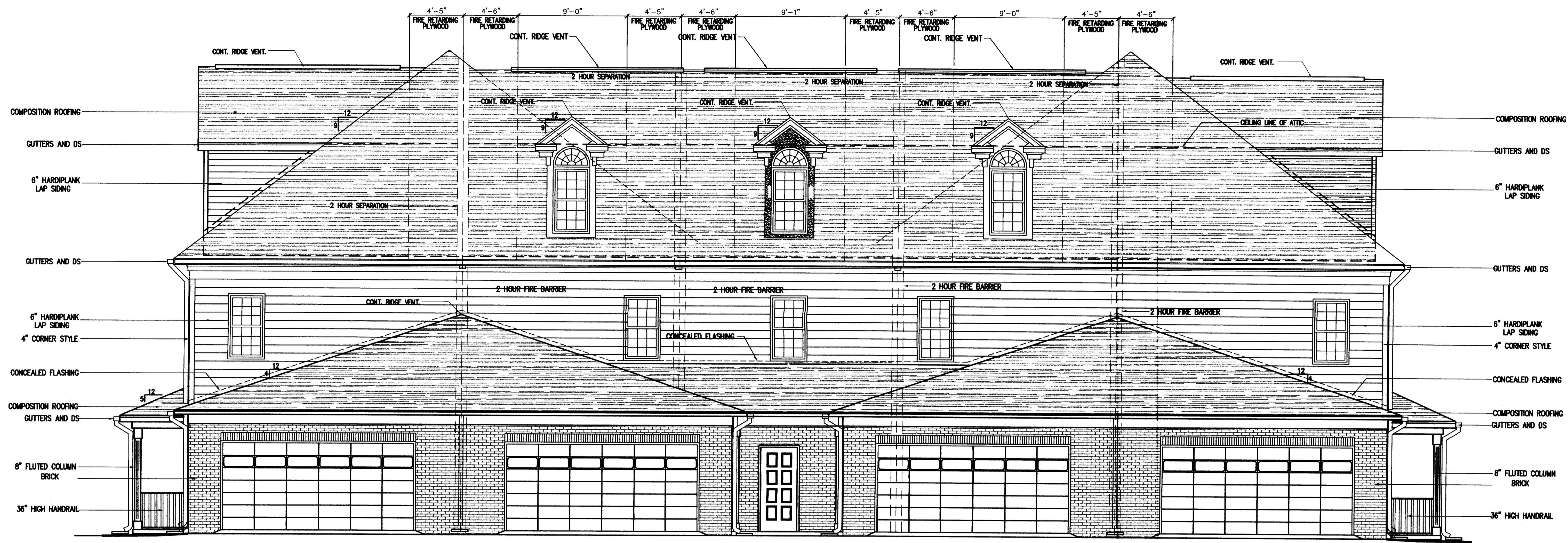
NO. DATE DESCRIPTION

DATE: 11.27.07
SCALE: AS SHOWN
DRAWN BY: AVH
CHECKED BY: AVH
JOB NO. CHERRY HILL COMMUNITY
CAD FILE: 11.27.07 AFH

CHERRY HILL COMMUNITY
5-UNIT AFFORDABLE HOUSING
UNIT DESIGN
1313 NORTH TRYON ST.
CHARLOTTE, NC 28206

BUILDING ELEVATIONS

A0501



2

REAR.ELEVATION

SCALE:1/4"=1'-0"



1

FRONT.ELEVATION

SCALE:1/4"=1'-0"

1313 N. Tryon St.
Charlotte, NC 28206
Tel: 704.333.9855
Fax: 704.776.1122

Millennium 3 Design Group
architects

PROJECT NO. 07-0001
DATE: 11.27.07
SCALE: AS SHOWN
DRAWN BY: AVH
CHECKED BY: AVH
JOB NO. CHERRY HILL COMMUNITY
CAD FILE: 11.27.07 AFH

THIS DOCUMENT IS THE PROPERTY OF
MILLENNIUM 3 DESIGN GROUP AND IS NOT TO
BE REPRODUCED IN WHOLE OR IN PART WITH
OUT THE PERMISSION OF THE ARCHITECT.

CHERRY HILL COMMUNITY
5-UNIT AFFORDABLE HOUSING
UNIT DESIGN
1313 NORTH TRYON ST.
CHARLOTTE, NC 28206

BUILDING ELEVATIONS

REVISIONS:
NO. DATE DESCRIPTION
1 11.27.07 AS SHOWN
2 11.27.07 AS SHOWN
3 11.27.07 AS SHOWN
4 11.27.07 AS SHOWN
5 11.27.07 AS SHOWN
6 11.27.07 AS SHOWN
7 11.27.07 AS SHOWN
8 11.27.07 AS SHOWN
9 11.27.07 AS SHOWN
10 11.27.07 AS SHOWN

DATE: 11.27.07
SCALE: AS SHOWN
DRAWN BY: AVH
CHECKED BY: AVH
JOB NO. CHERRY HILL COMMUNITY
CAD FILE: 11.27.07 AFH

A0500