

University City Area Plan

Economic Development & Planning Committee

June 6, 2007

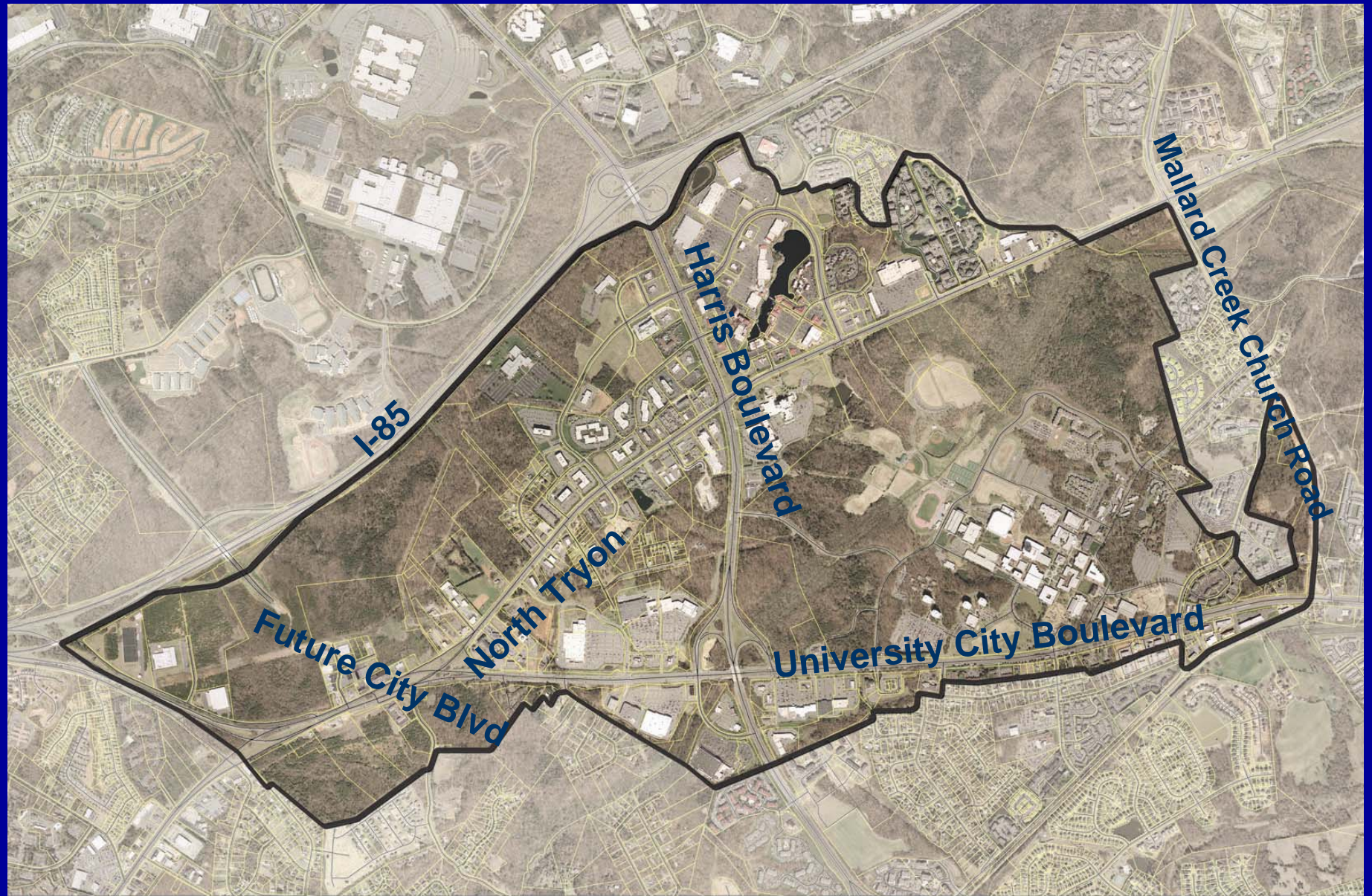


Purpose of the Meeting

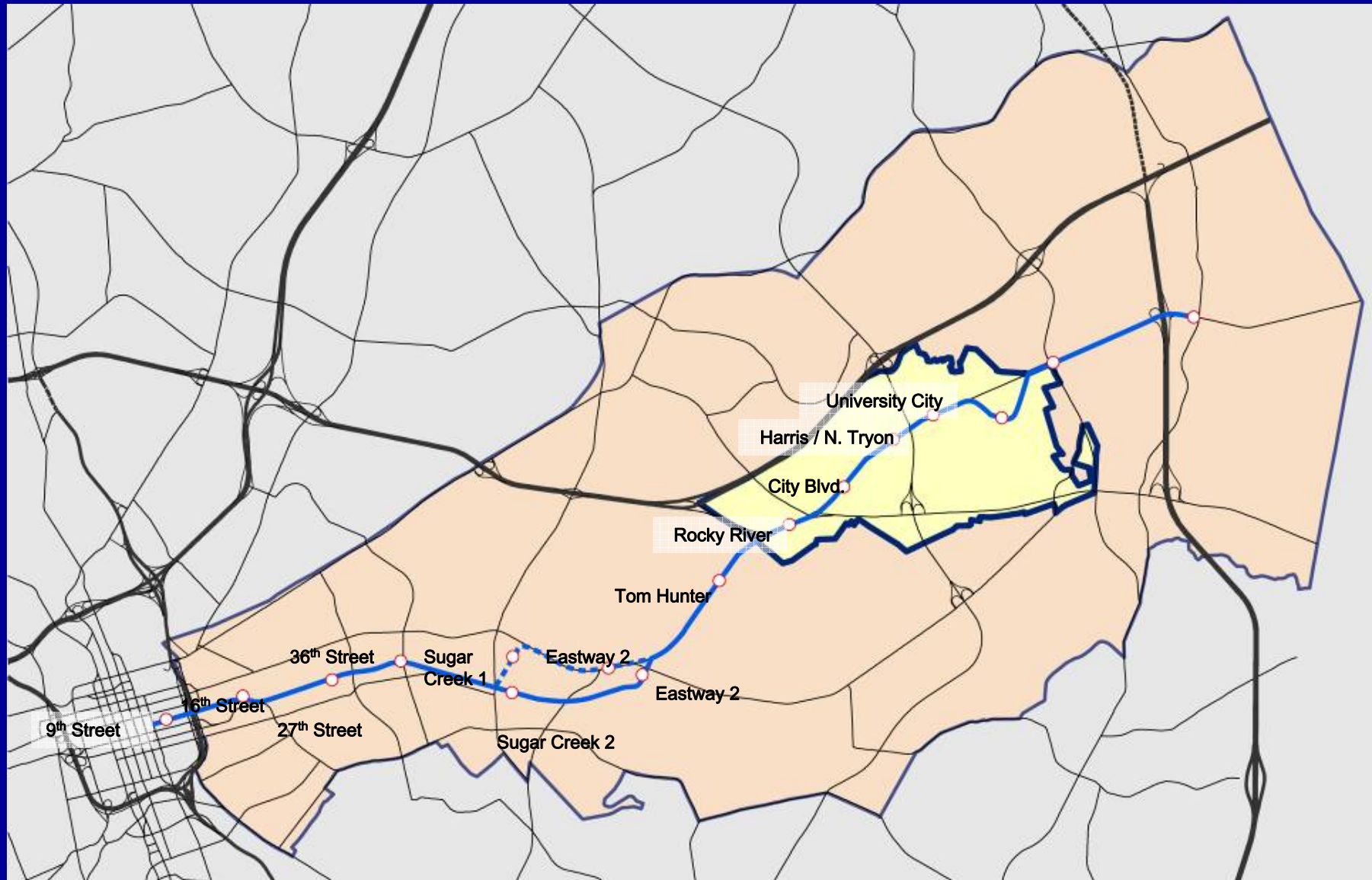
- Provide an overview of the plan
- Set a date for public comment with City Council



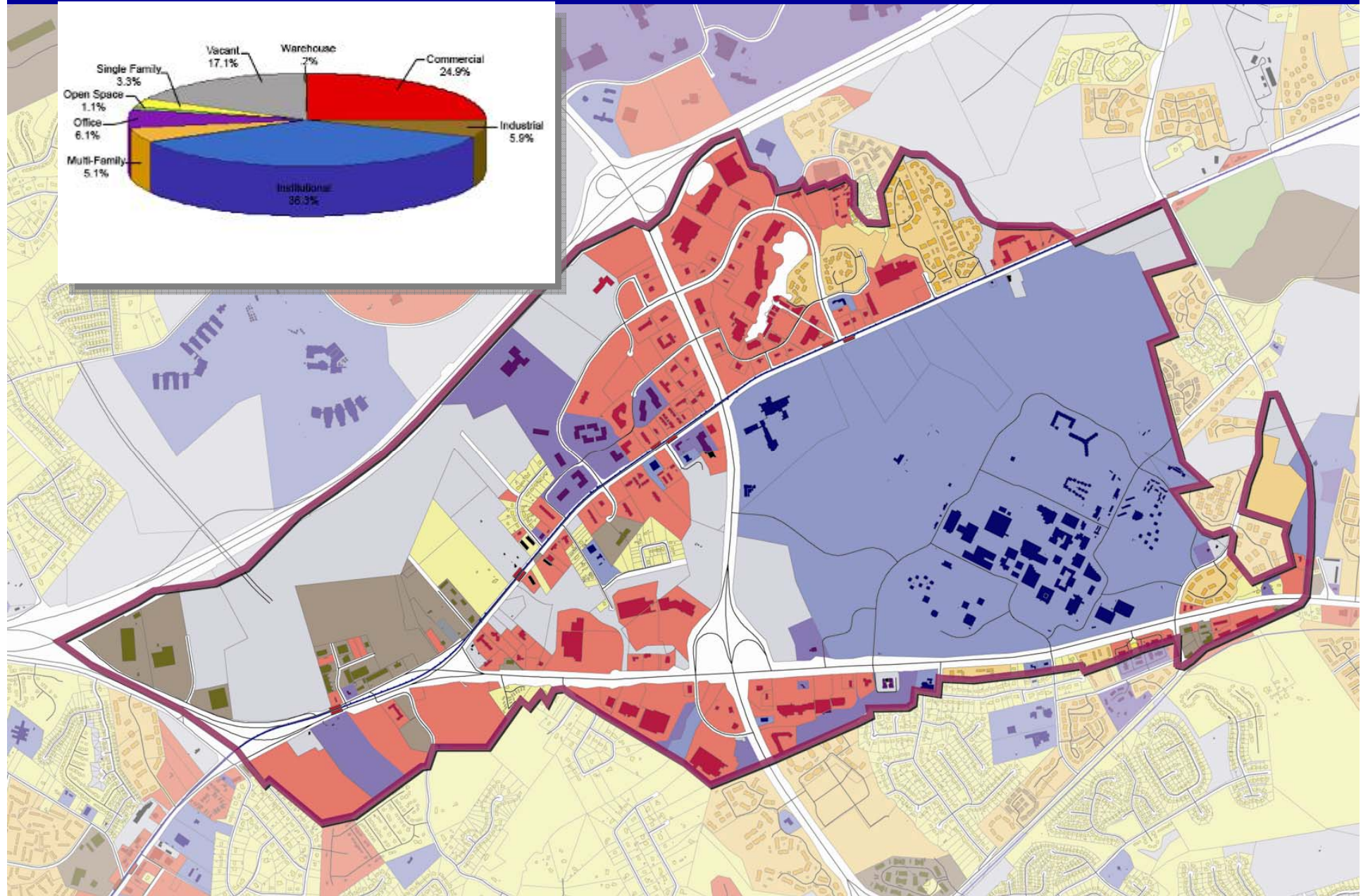
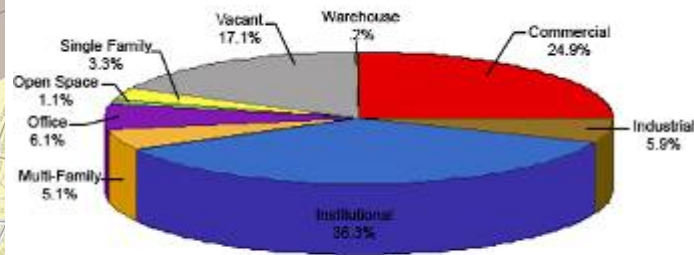
Study Area Boundaries



The Northeast Corridor



Existing Land Use



Why an Area Plan?

Conditions have changed:

- Designated as a Light Rail Transit (LRT) corridor and station locations determined.
- Major improvements planned for the US 29/NC 49 “weave” have significantly changed.
- UNCC plans to create a major gateway to the campus off North Tryon, including an LRT station.

Development Process

University City Partners Sponsored

- Road to Rail Conference (September 2004)
- Urban Boulevard Community Kick-off (March 2005)
- “Creating a Civic Gathering Spot” (April 2005)
- Urban Boulevard Stakeholder Interviews (June 2005)
- Urban Boulevard Final Presentations (August 2005)
- Where to put our “There” conference (Jan 2006)
- University City Area Plan Kick-off and Urban Boulevard Final Presentation (September 2006)

City of Charlotte Sponsored

- Station Area Planning (2005 and 2006)
- University City Area Plan Community Meeting (September 2006)
- University City Area Plan Community Meeting (May 2007)

Vision

University City will be transformed into a distinct and vibrant people-oriented place that is urban in scale and design.

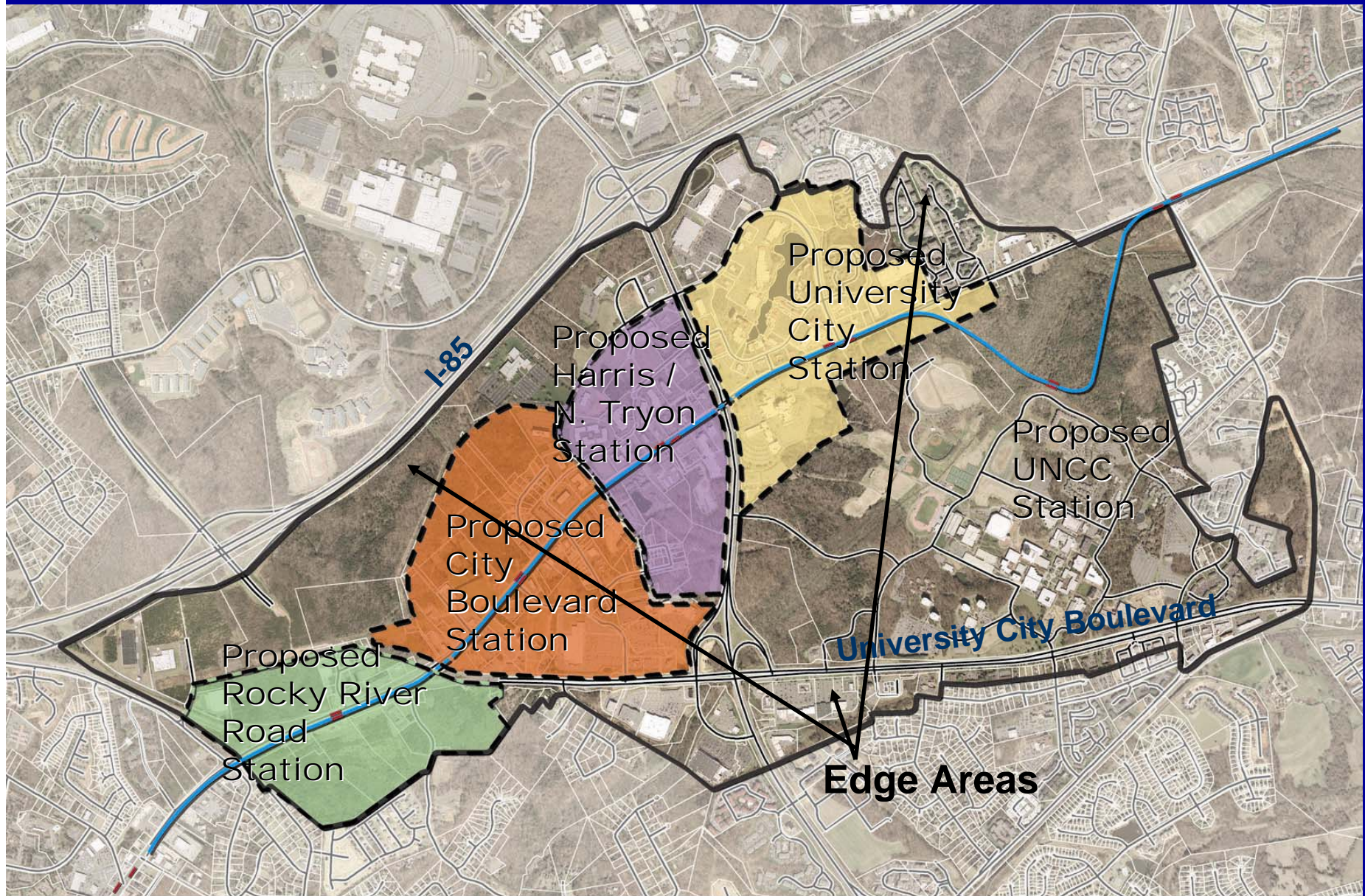
It will be energized by the highly successful Northeast Corridor Light Rail Transit line that will operate along the North Tryon corridor and will be a popular and accessible destination for people of all ages, income levels and backgrounds, offering diverse and unique choices for living, shopping, working, learning and enjoying leisure time.



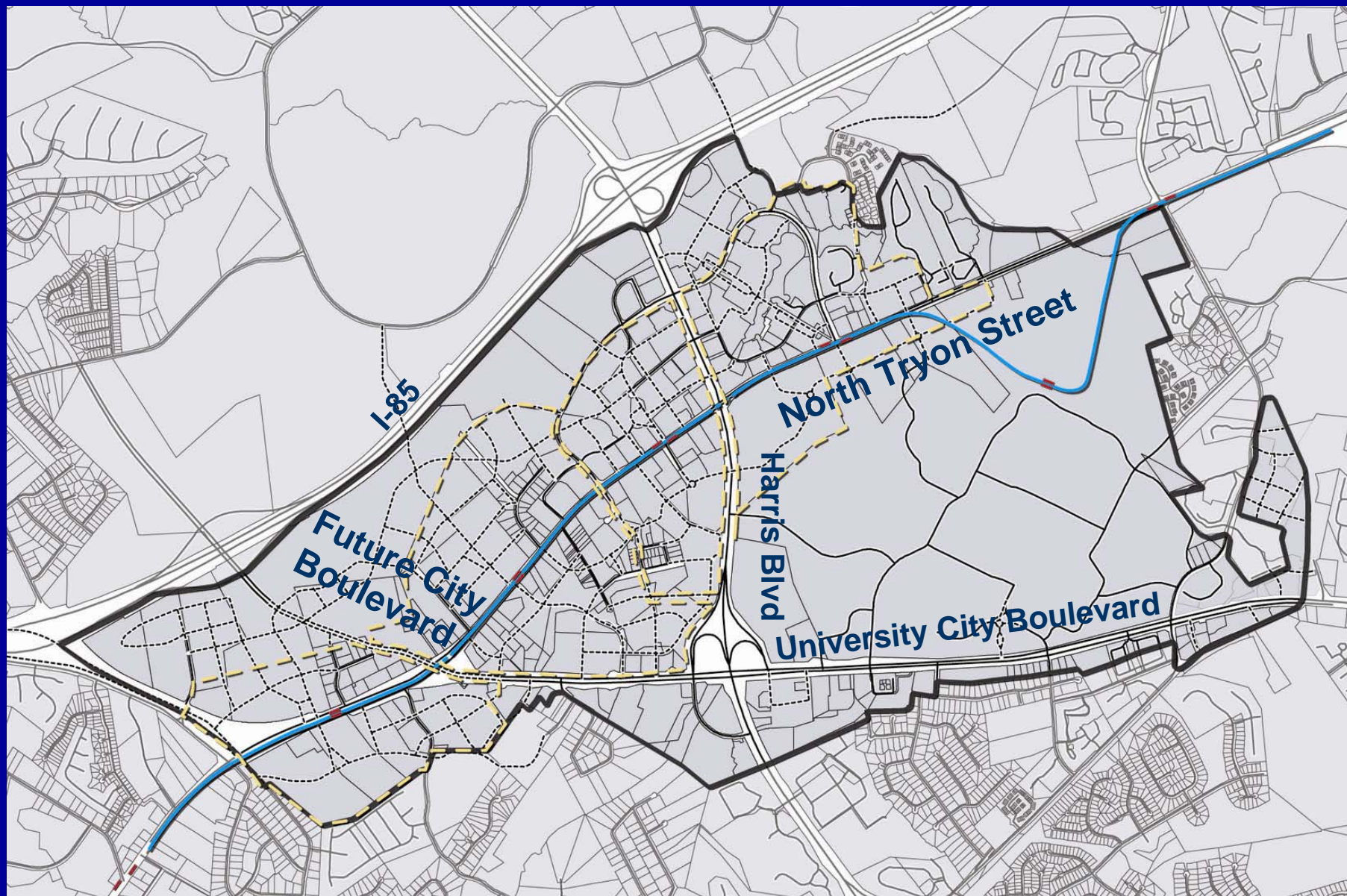
Goals Summary

- **Promote and design Northeast LRT corridor as a gateway to University City.**
- **Identify opportunities for encouraging the development of lively, well-designed transit station areas that contain a variety of uses.**
- **Encouraging transit and pedestrian compatible redevelopment of the edge areas.**
- **Improving connectivity.**
- **Creating a network of public open spaces, parks and greenways.**
- **Supporting a healthy natural environment.**

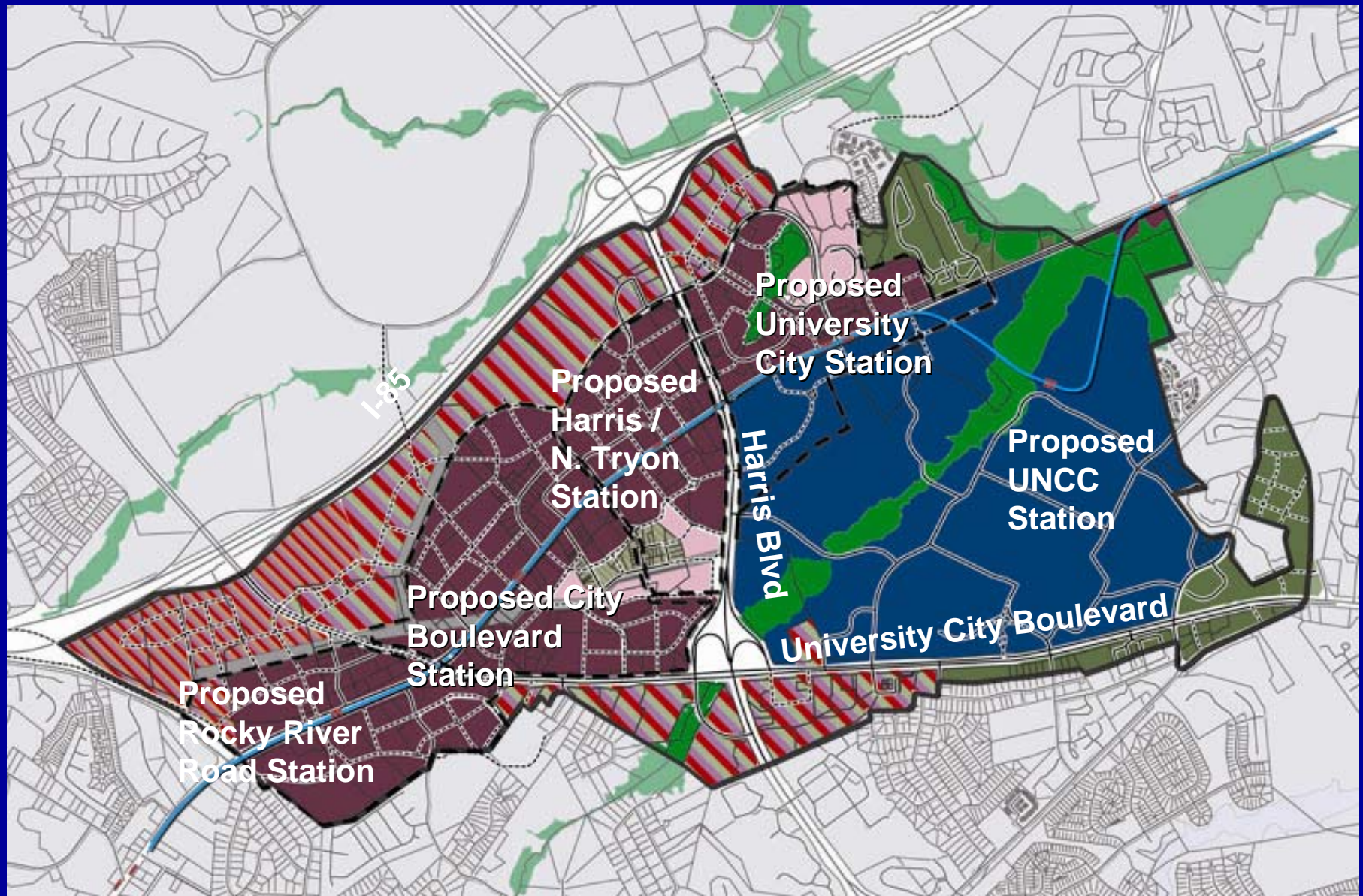
Plan Recommendations



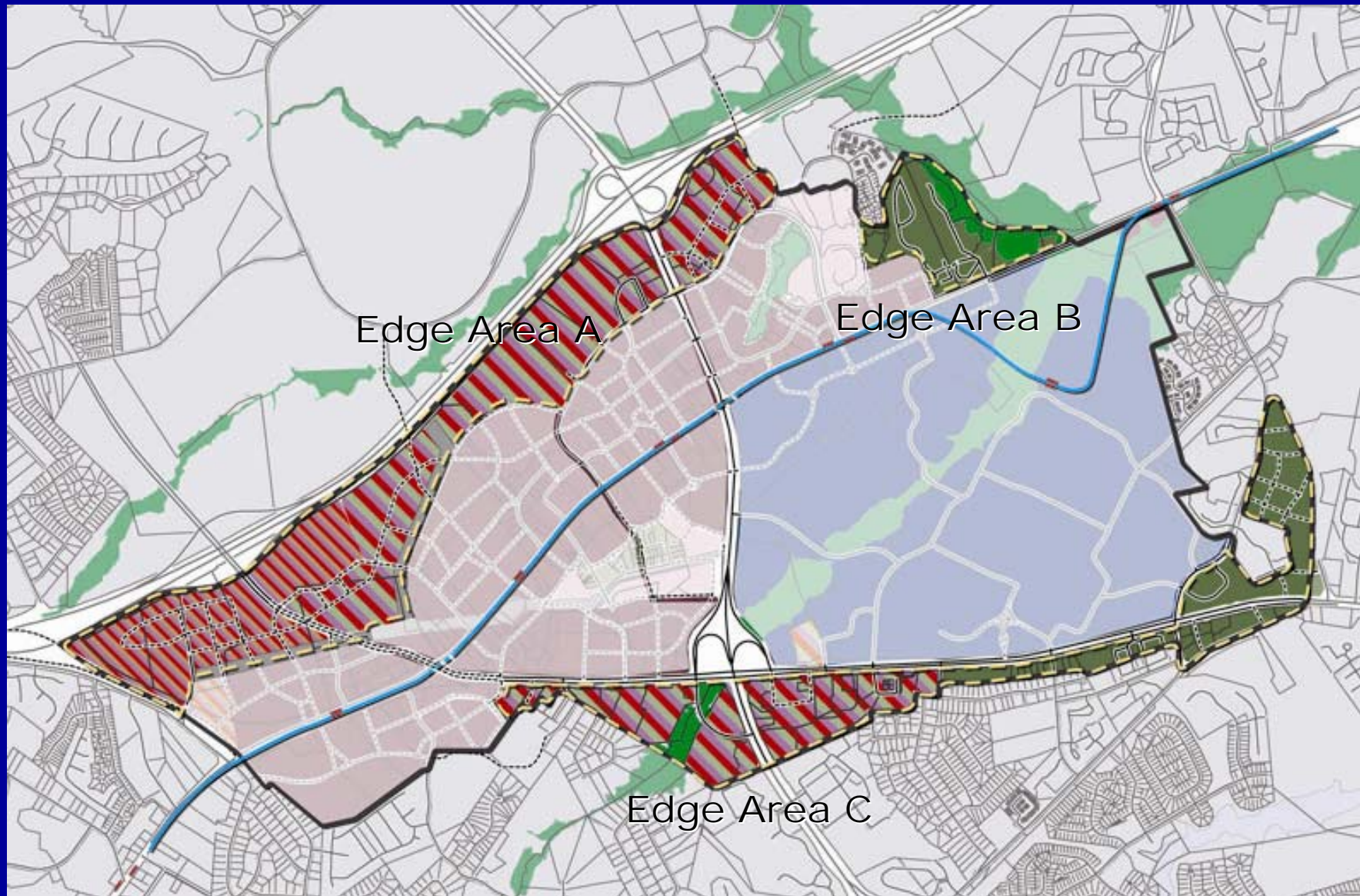
Street Network and Transit



Plan Recommendations – Land Use



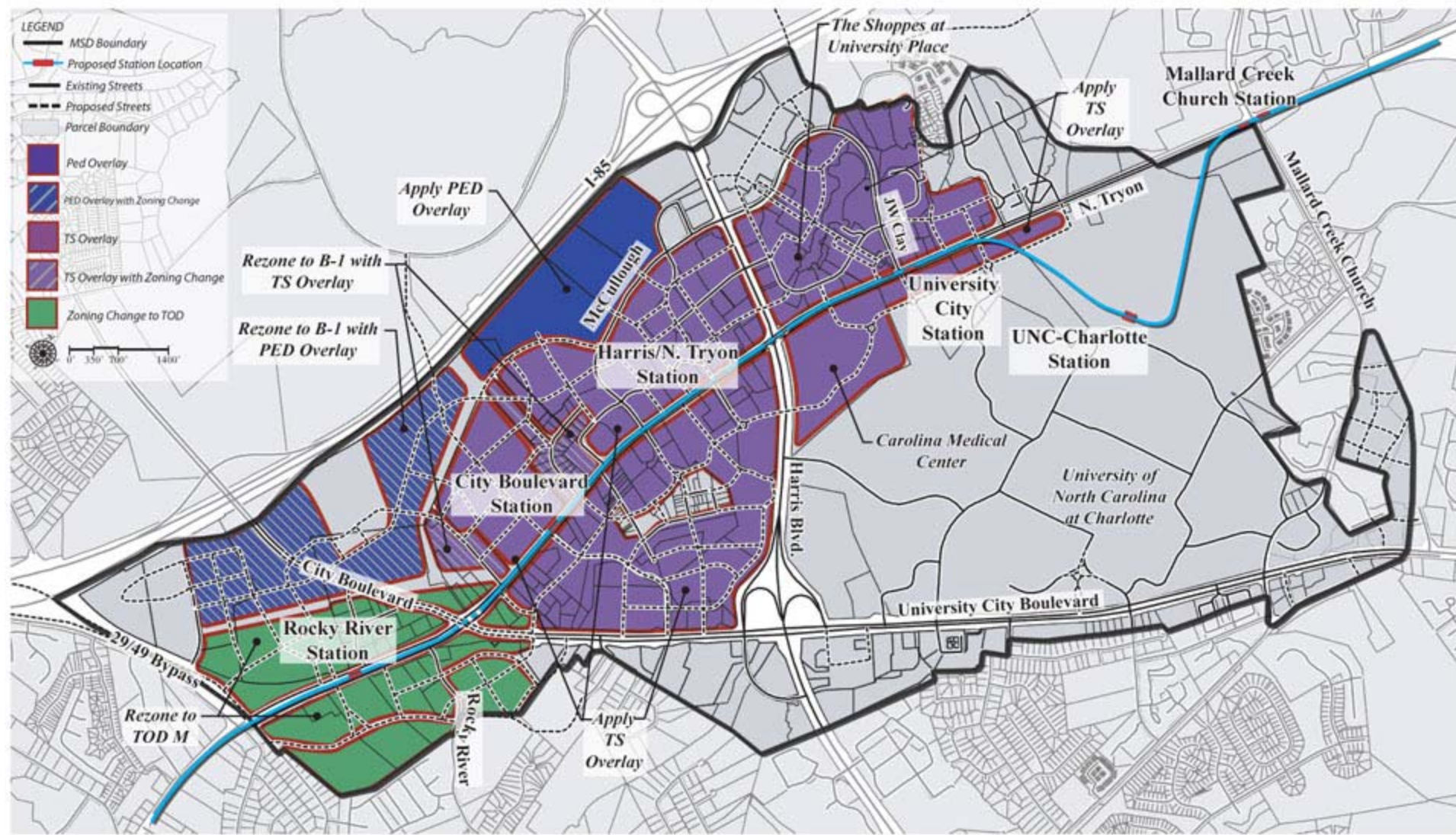
Plan Recommendations – “Edge” Areas



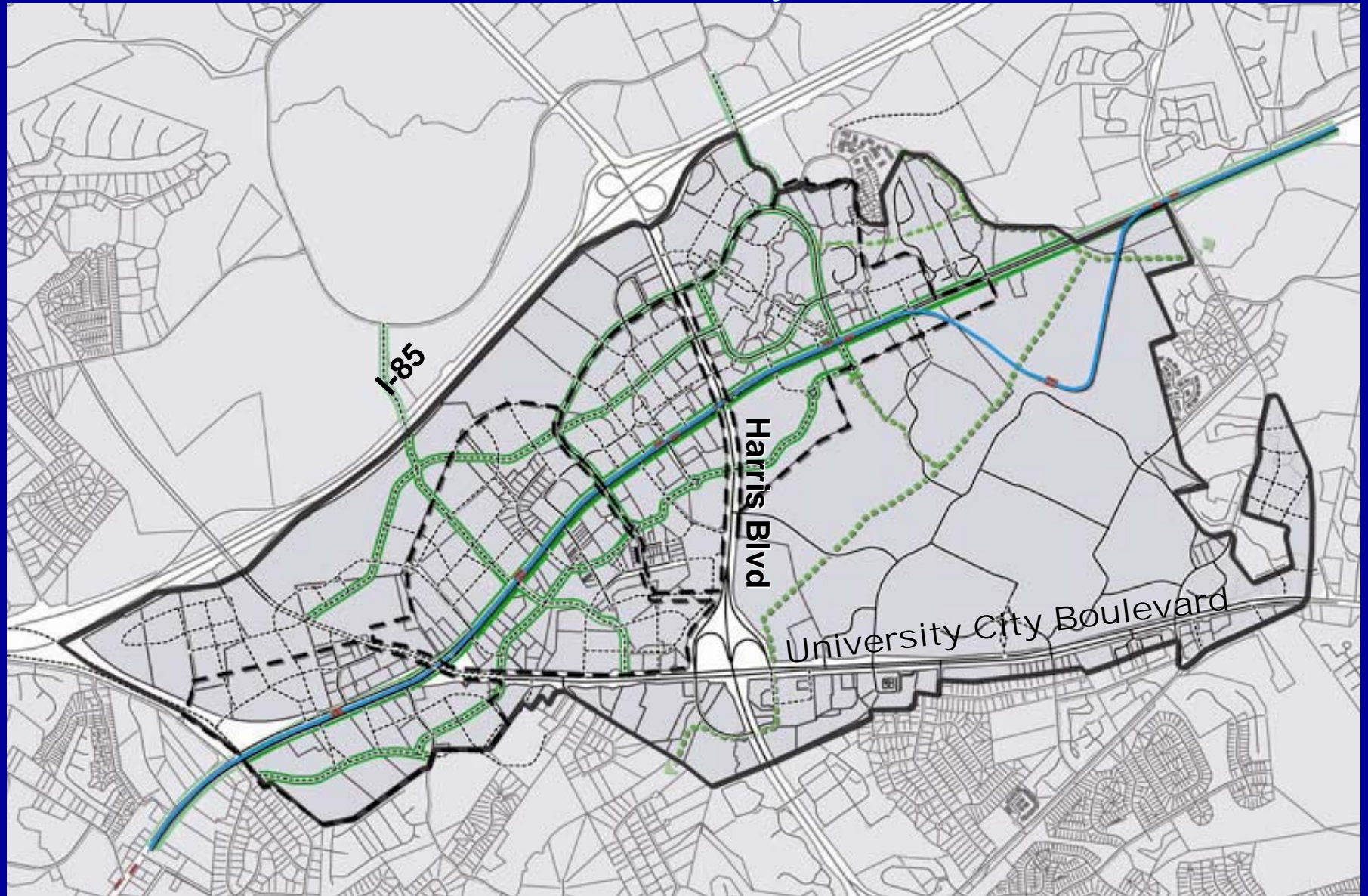
Plan Recommendations – Corrective Rezoning

DRAFT

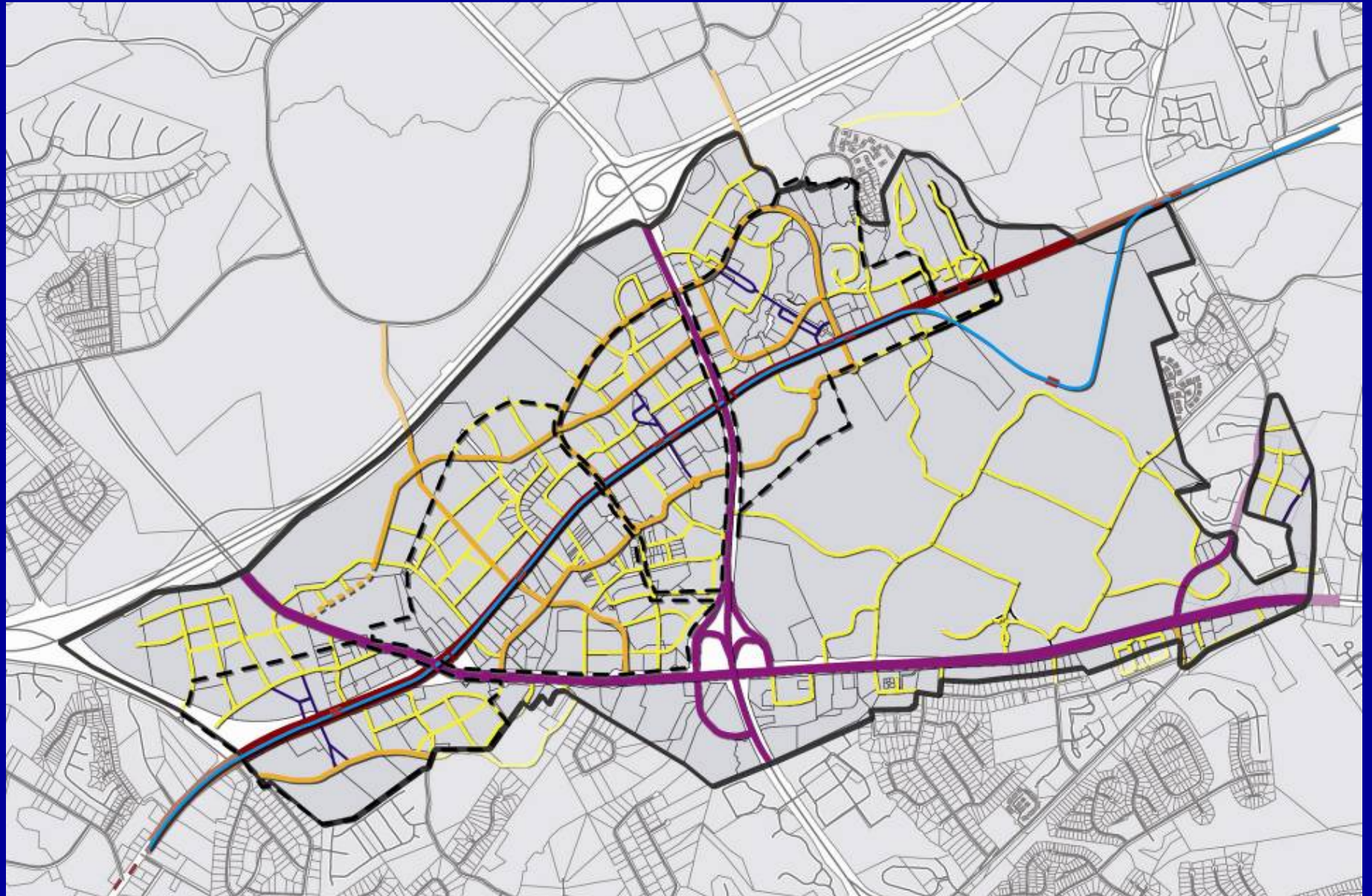
MAP #18- CORRECTIVE REZONING



Plan Recommendations – Bicycle Facilities and Greenways



Plan Recommendations – Street Network and Road Classifications



Next Steps

- **Review and Adoption Process**
 - **Planning Committee Recommendation – June 26th**
 - **ED&P Overview – June 6th**
 - **City Council Public Comment – June 25th**
 - **ED&P Review and Recommendation – July/August**
 - **City Council Action – July or August (tentative)**

Questions?

www.charlotteplanning.org