

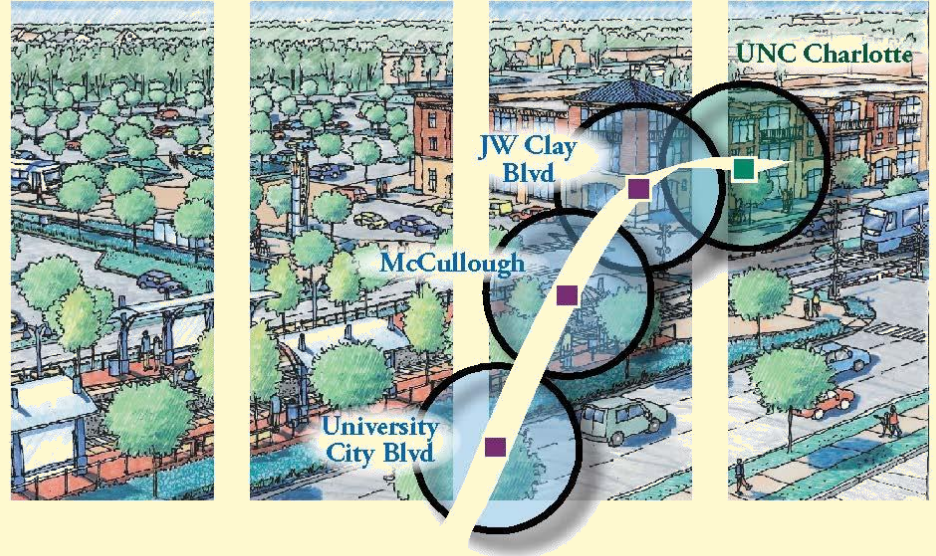


University City Area Plan

City Council
Public Comment

April 13, 2015

- Plan Overview
- Highlight of Draft Policies
- Plan Implementation
- Next Steps – Review and Adoption Process
- Requested Action:
Receive Public Comments



2013

Dec. - Public Workshop No. 1 – Vision and Land Use

2014

Feb. – Public Workshop No. 2 – Transportation and Design

March – Public Workshop No. 3 – Review of recommendations

April – Nov. – Plan Development

Dec. – Public Workshop No. 4 – Review of final draft policies

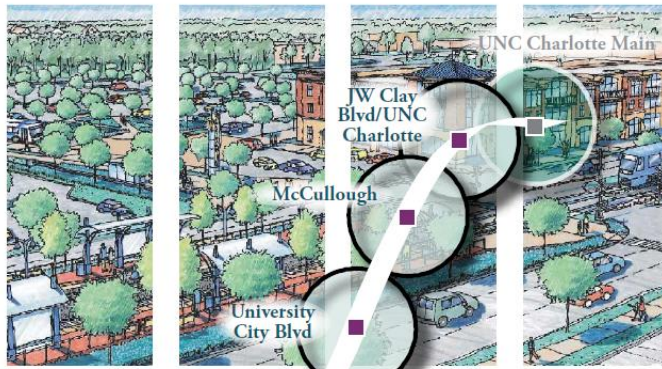
2015

January – Began Review & Adoption

University City Area Plan Plan Format

Volume 1: Introduction

Volume 2: Concept Plan



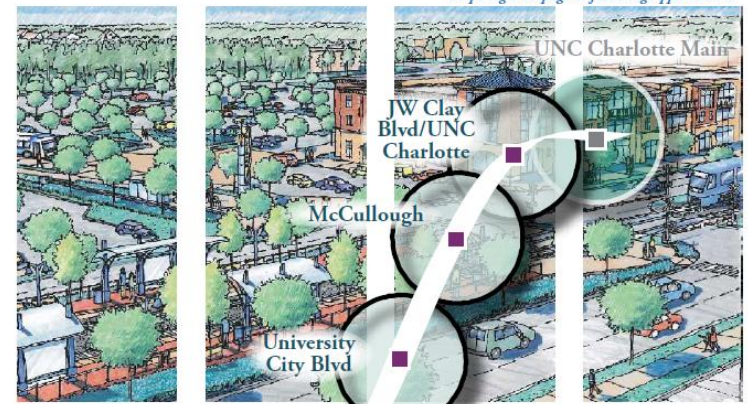
- Adopted by City Council
- Vision
- Policies for land use, design, mobility, open space
- Used in future land use decisions

Volume 3: Implementation Guide

Volume 4: Adopted Plans and Policies

Volume 5: Appendix (existing conditions)

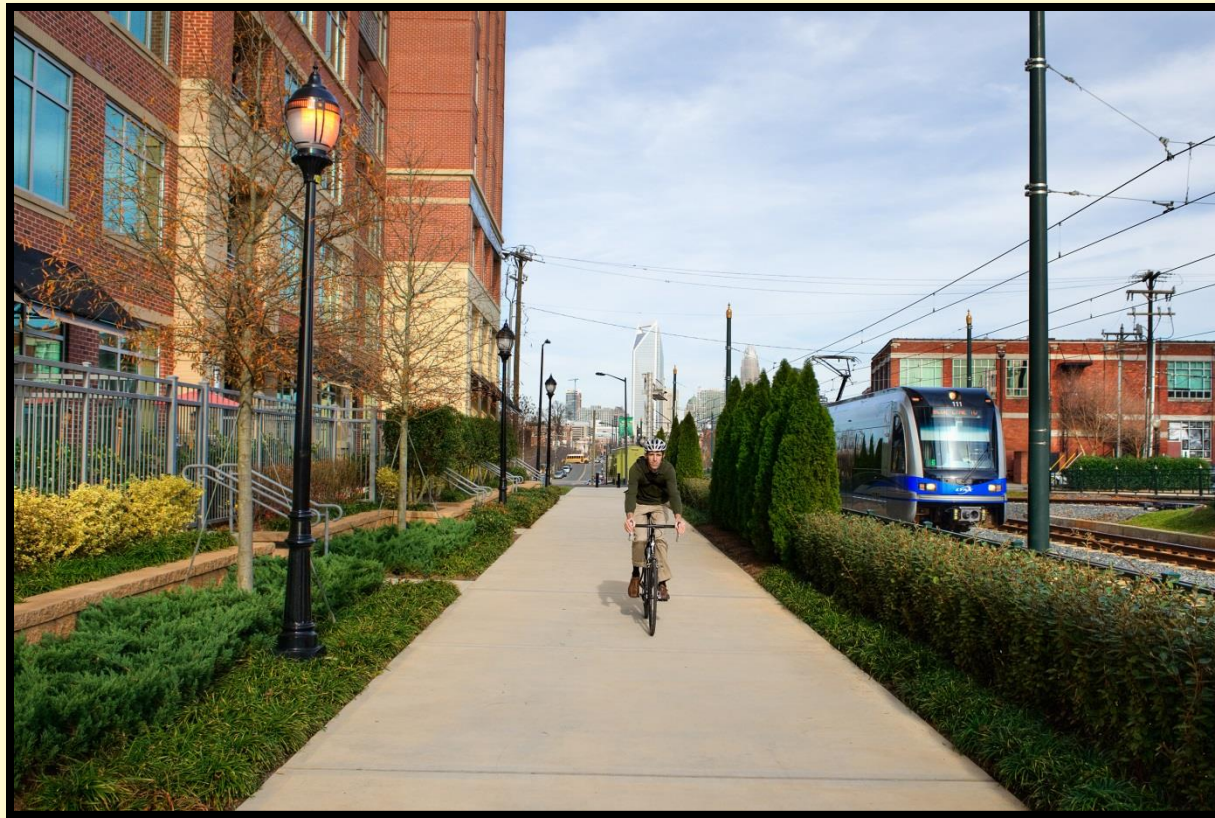
Maps begin on page xx following Appendix text



- Not adopted by City Council
- Tool for staff to track projects – can be updated
- Summary of adopted plans
- Report of analysis

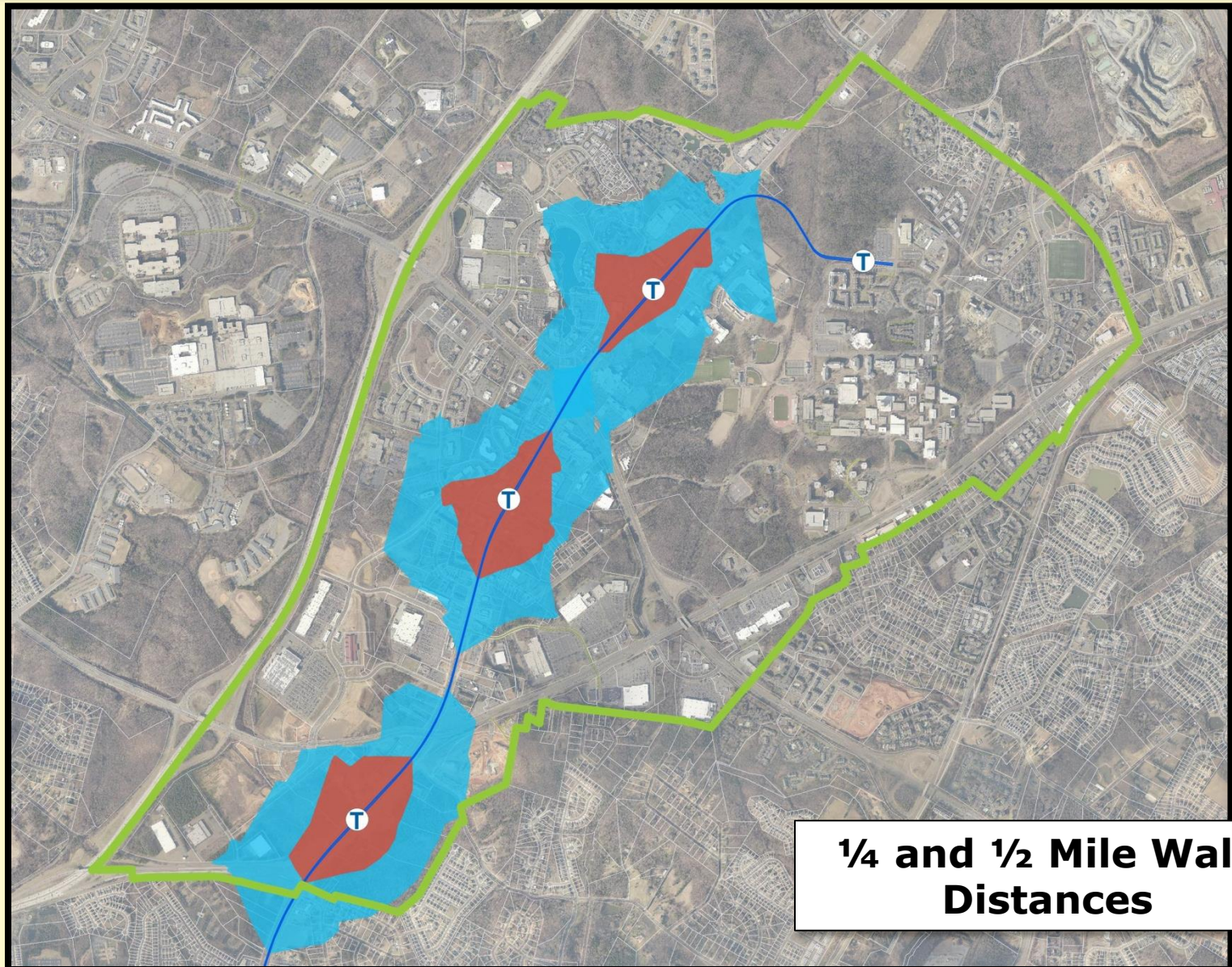
Vision

- People-Oriented Place
- Energized by the light rail
- A popular destination
- For all people, all ages, income levels, and backgrounds
- Choices for living, shopping, working, learning, and enjoying leisure time

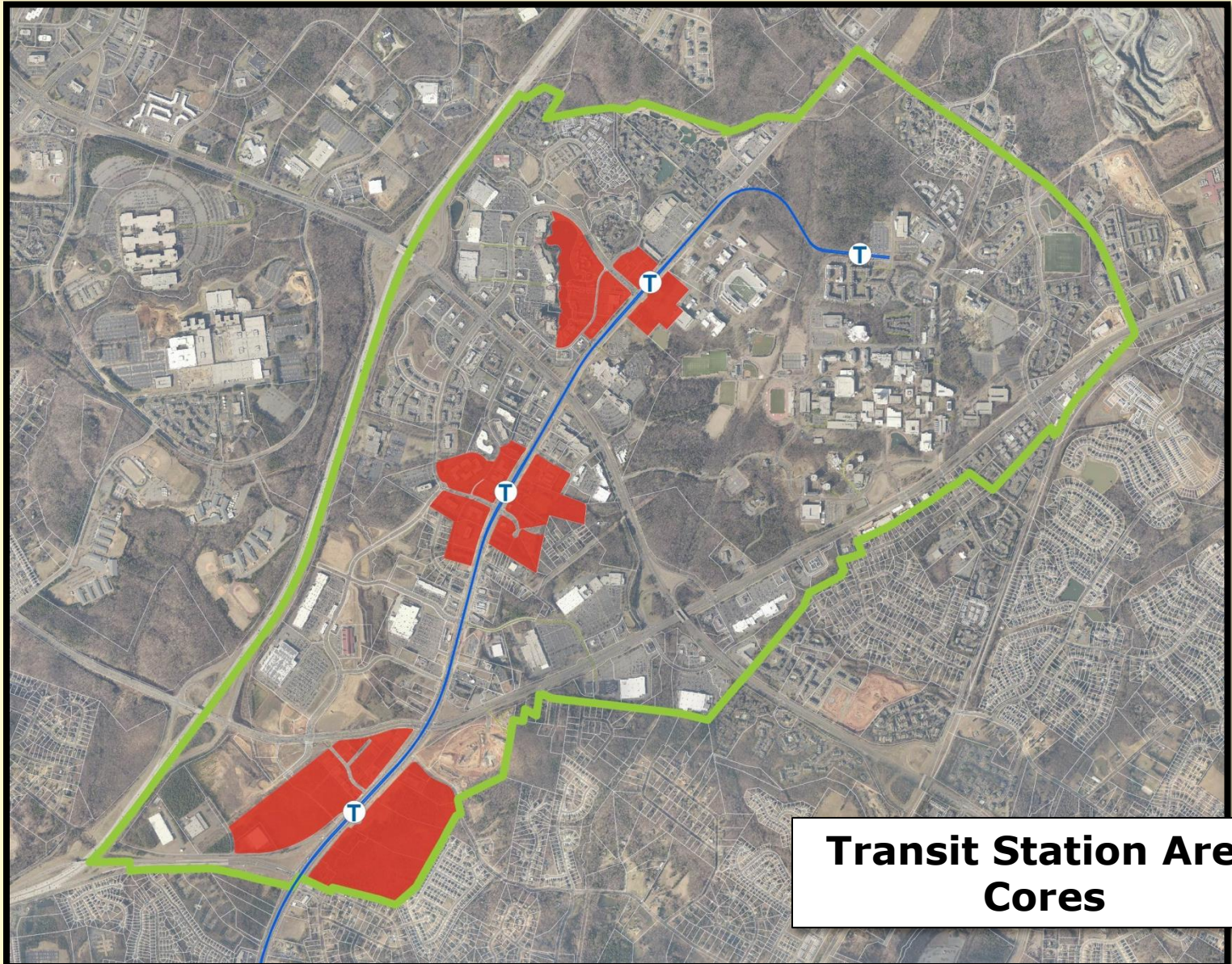




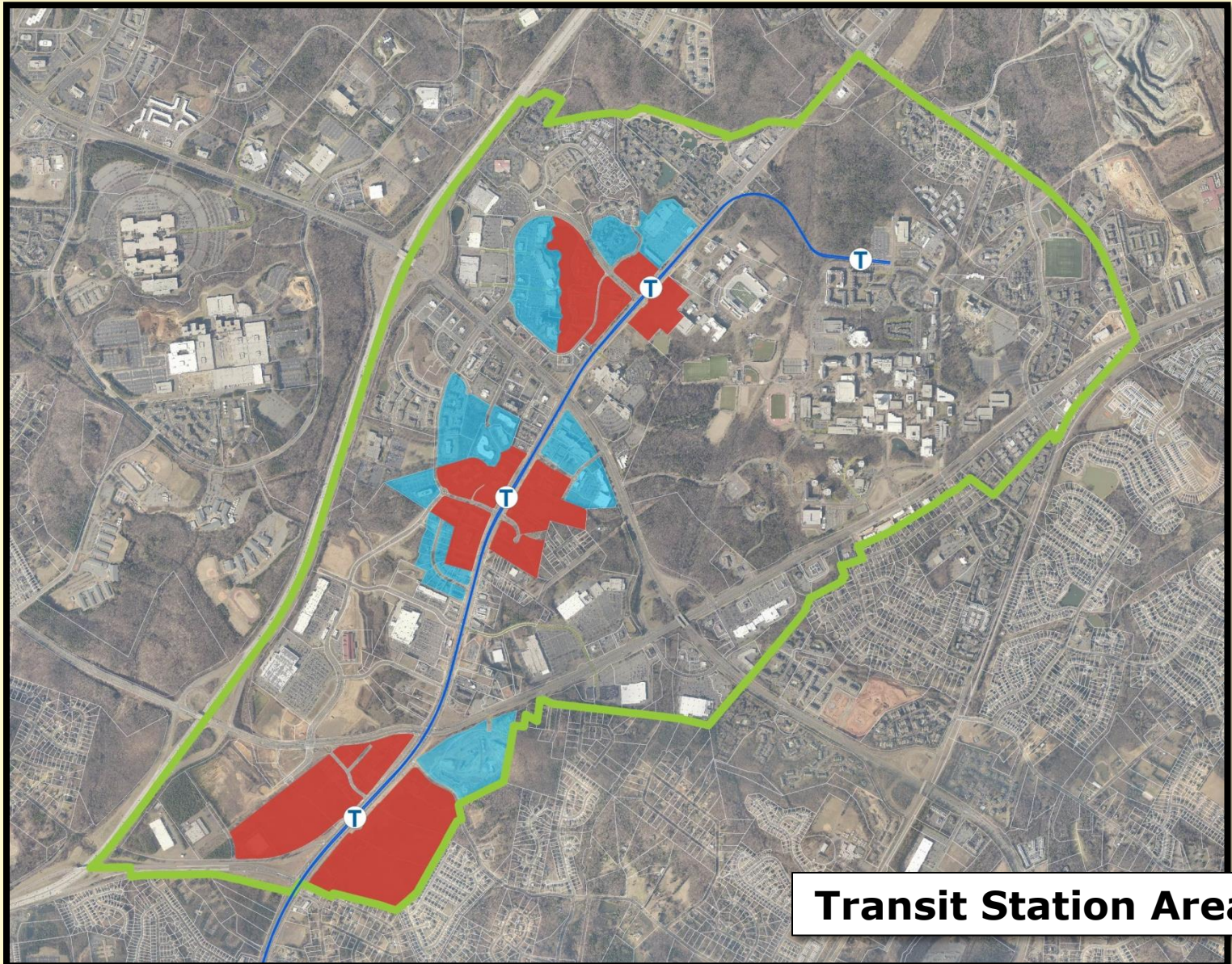
Plan Area Boundary



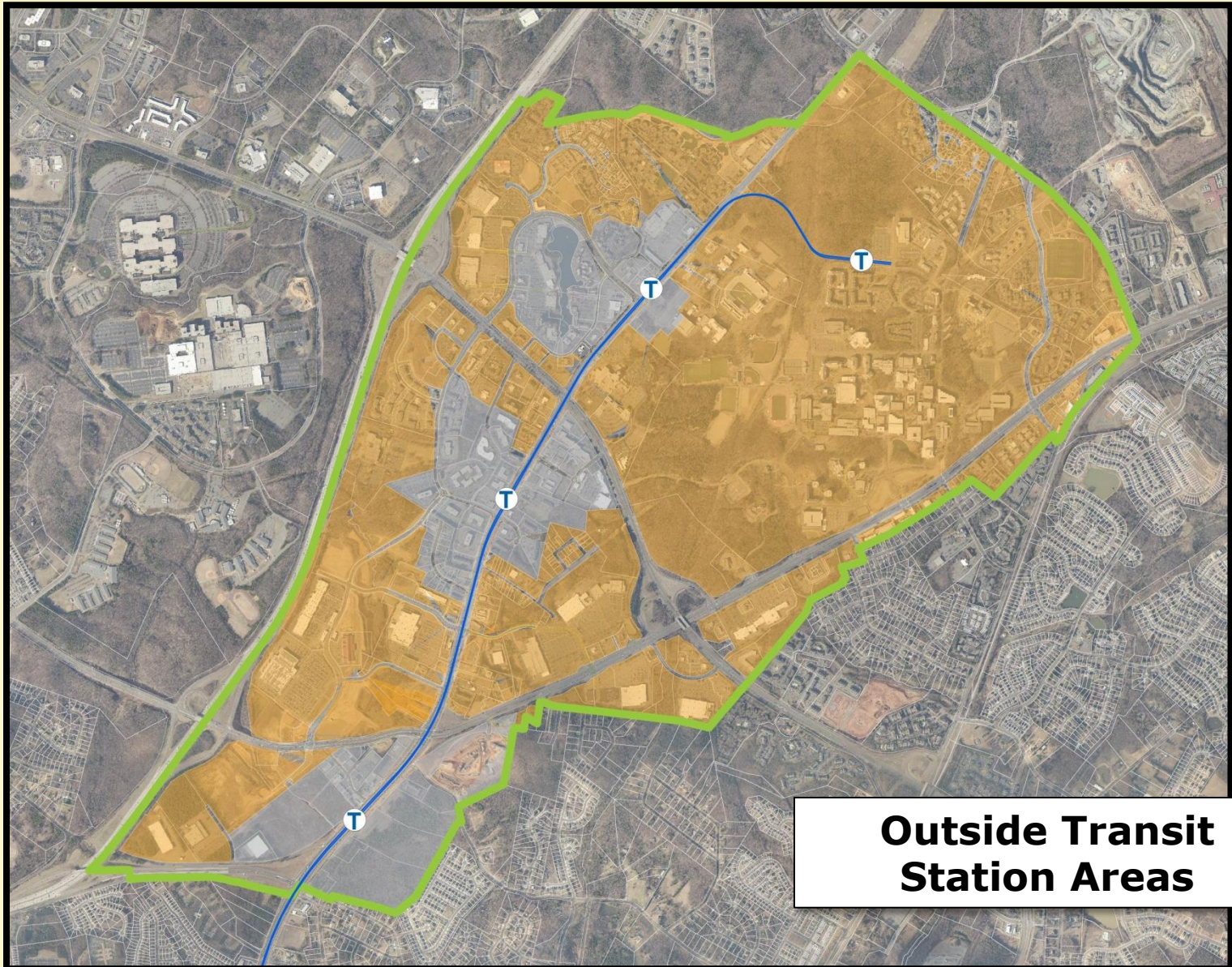
**1/4 and 1/2 Mile Walk
Distances**



**Transit Station Area
Cores**



Transit Station Areas

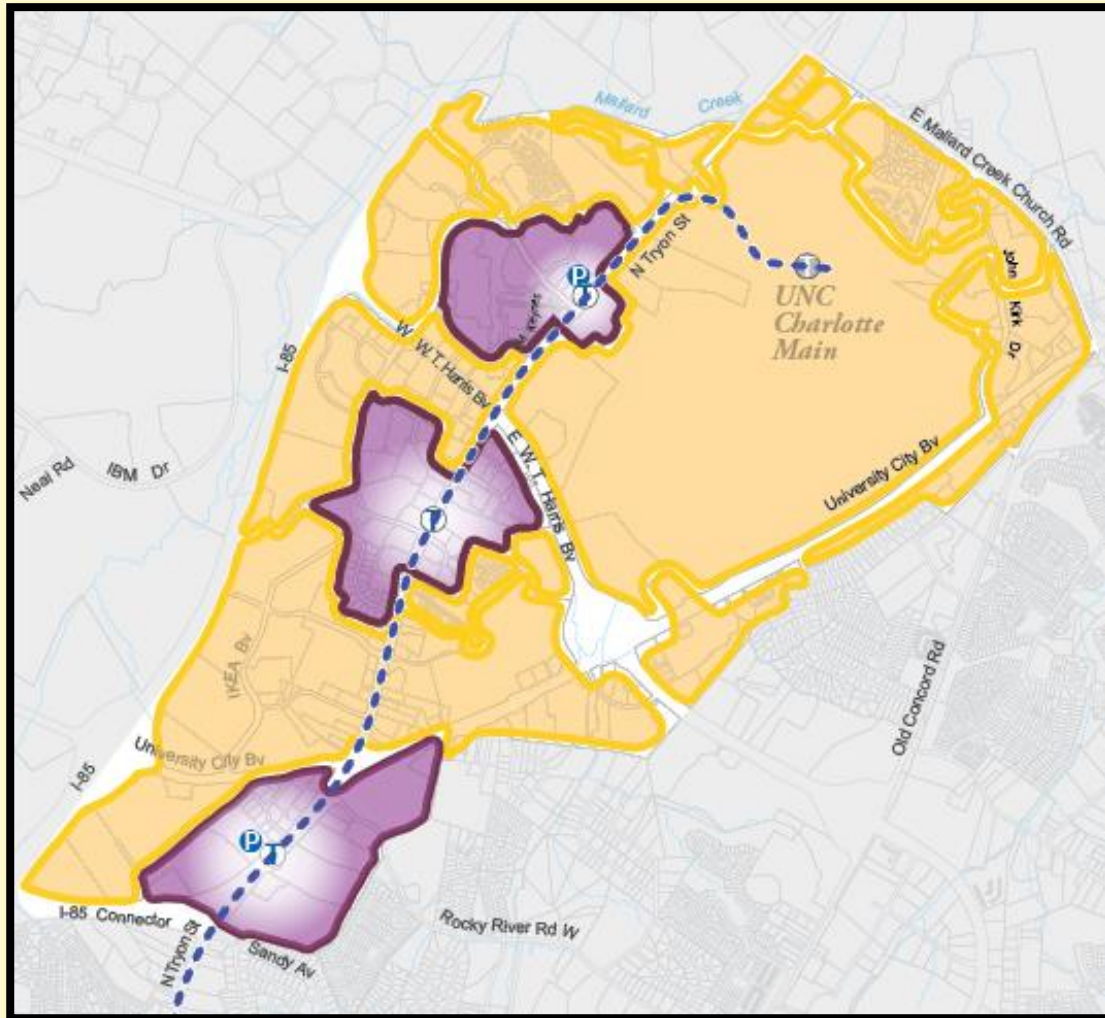


**Outside Transit
Station Areas**

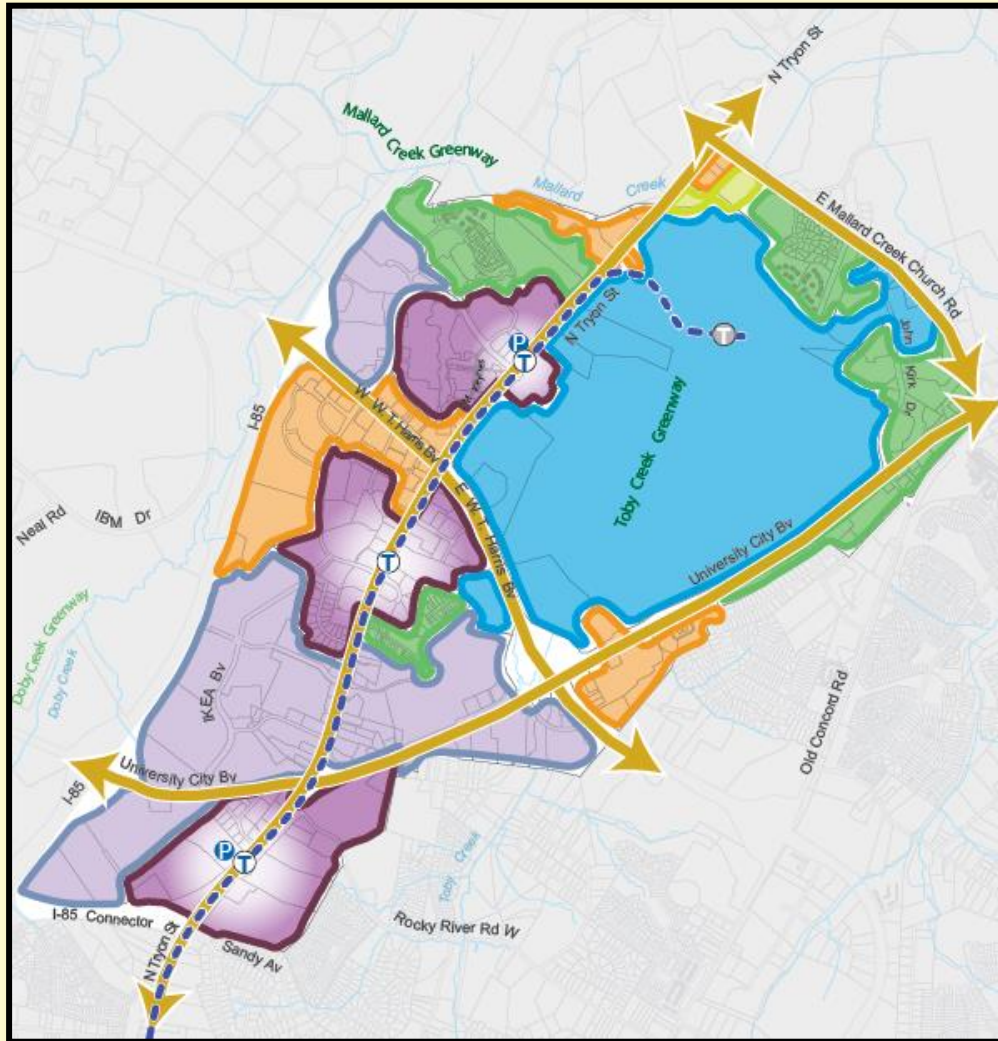
University City Area Plan Policies

- **Study Area**

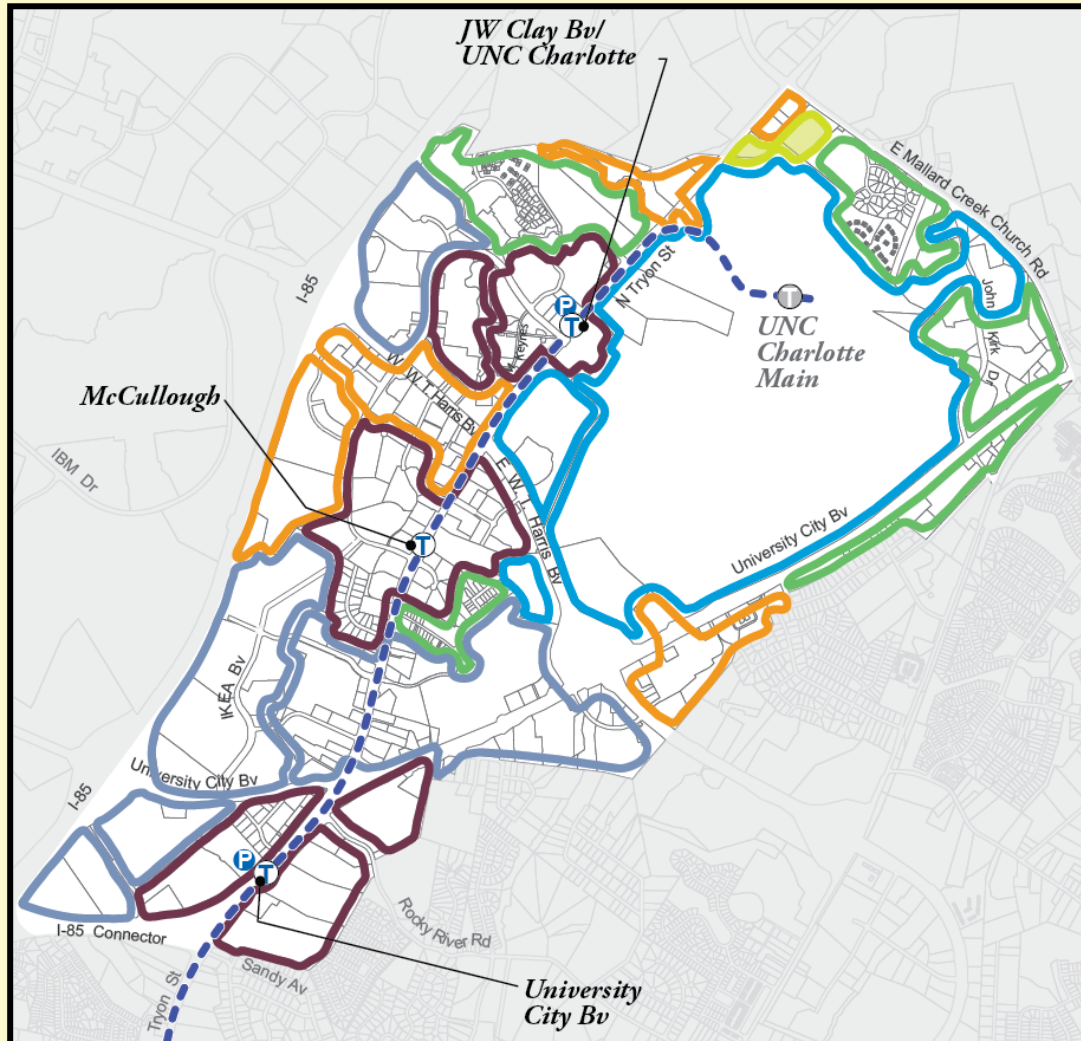
- Excluding campus:
 - Transit Station Areas: 25%
 - Outside TSA: 75%



University City Area Plan Policies



- **Study Area**
 - Excluding campus:
 - Transit Station Areas: 25%
 - Outside TSA: 75%
- **Character Areas**
 - 3 Transit Station Areas
 - Regional Service Areas
 - Corridor Service Areas
 - Primarily Residential
 - Institutional



• Study Area

- Excluding campus:
 - Transit Station Areas: 25%
 - Outside TSA: 75%

• Character Areas

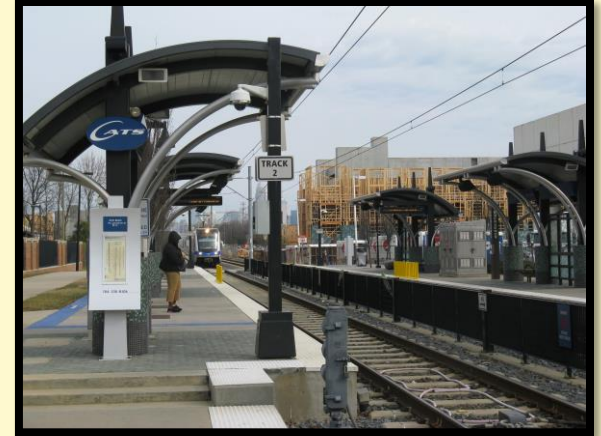
- 3 Transit Station Areas
- Regional Service Areas
- Corridor Service Areas
- Primarily Residential
- Institutional

• Policy Areas

- Land Use
- Design
- Mobility
- Open Space

Implementation

- Capital Investments
 - Northeast Corridor Infrastructure Program (NECI)
 - Other capital projects
- Land Use and Development
 - Private development
 - City-initiatives



Planning Committee – Public Comment, January 20, 2015

- Support and desire for pedestrian connectivity and urban form of new development, especially in transit station areas; Plan should go further to eliminate suburban sprawl
- Policies should support continued use and form of existing development, especially in transit station areas
- University City Partners' Executive Director spoke in favor of the plan and of their involvement throughout the process
- Public art, affordable housing, LEED design

- ✓ **Tonight** City Council receives public comment
- **Upcoming TAP Committee Meeting(s)** Continued review of draft plan and recommendation to full City Council
- **Future City Council Meeting** Plan Adoption

Thank You!

<http://UCAP.charlotteplanning.org>

Updates for Blue Line Extension

Follow us on Twitter and Facebook:

 **@BLEupdates**

 **Facebook.com/CATSBlueLineExtensionUpdates**