

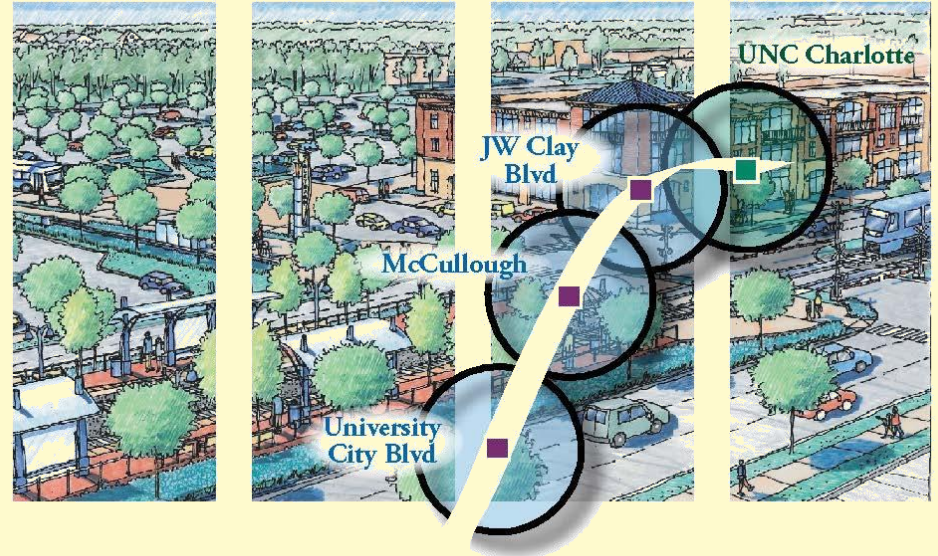


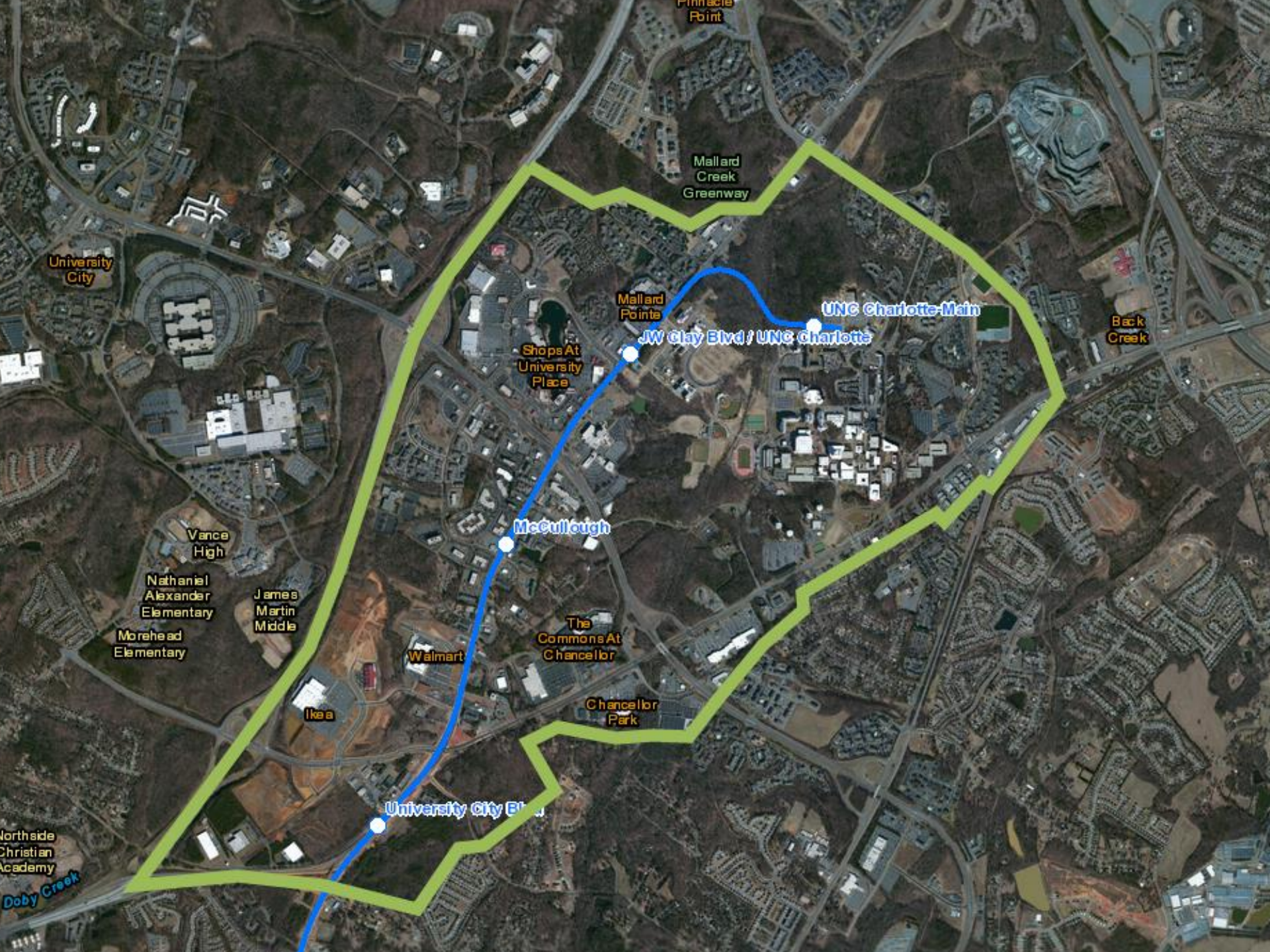
University City Area Plan

Transportation and Planning Committee

January 12, 2015

- **Context of the Plan**
 - Growth Framework
 - Blue Line Extension
- **Overview**
 - Process
 - New techniques
- **Next Steps – Review and Adoption Process**





Pinnacle Point

Mallard Creek Greenway

University City

Mallard Pointe

UNC Charlotte-Main

Back Creek

Shops At University Place

JW Clay Blvd / UNC Charlotte

McCullough

Vance High

Nathaniel Alexander Elementary

James Martin Middle

Morehead Elementary

The Commons At Chancellor

Walmart

Chancellor Park

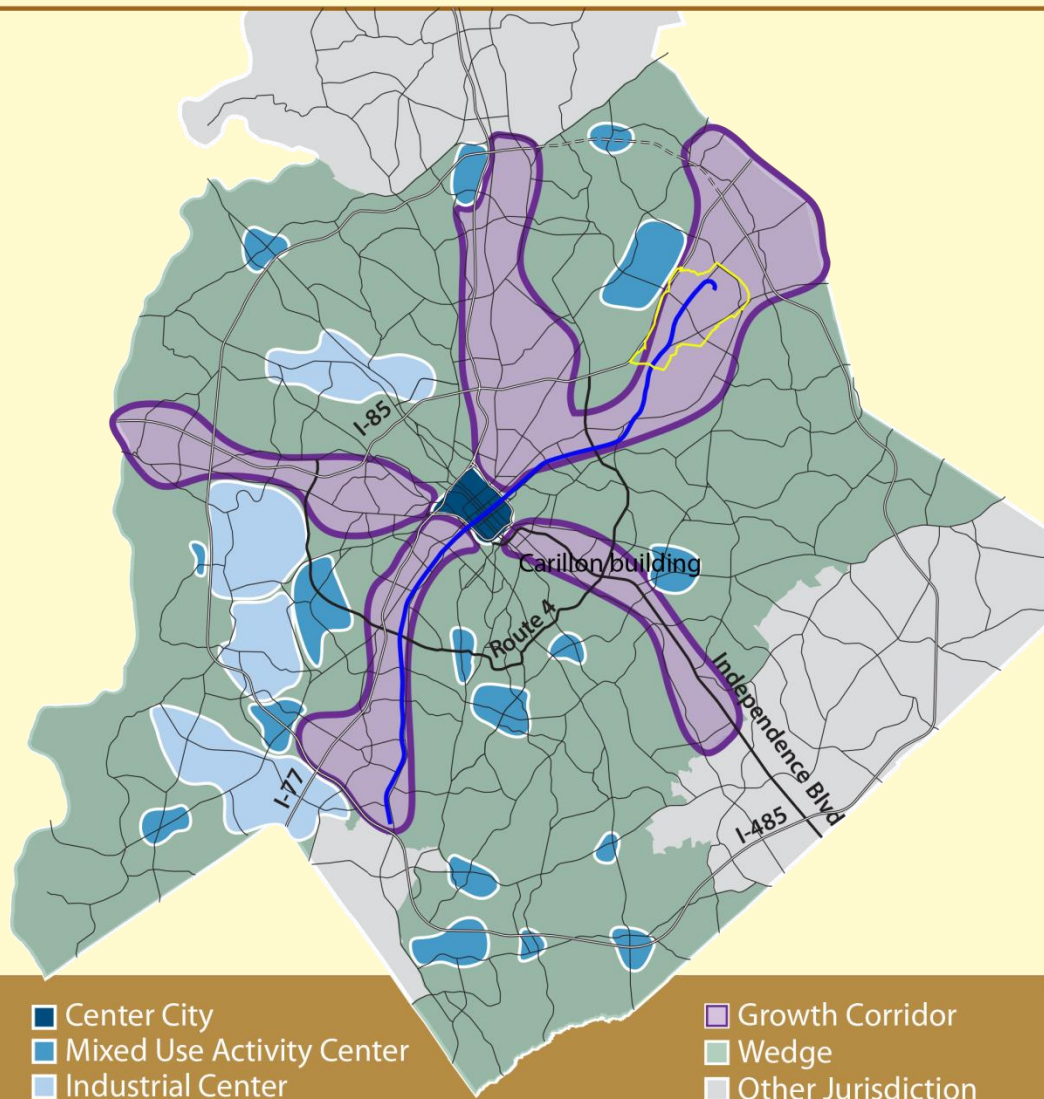
Ikea

University City Blvd

Northside Christian Academy
Doby Creek

University City Area Plan

Charlotte's Growth Framework



Charlotte-Mecklenburg Planning Department, April 2010

Growth Framework

Centers, Corridors & Wedges
(Adopted 2011)

General Development Policies
(Adopted 2003)

Vision

Area Plans
(1990 – Present)

Urban Street Design Guidelines
(Adopted 2007)

Implementation

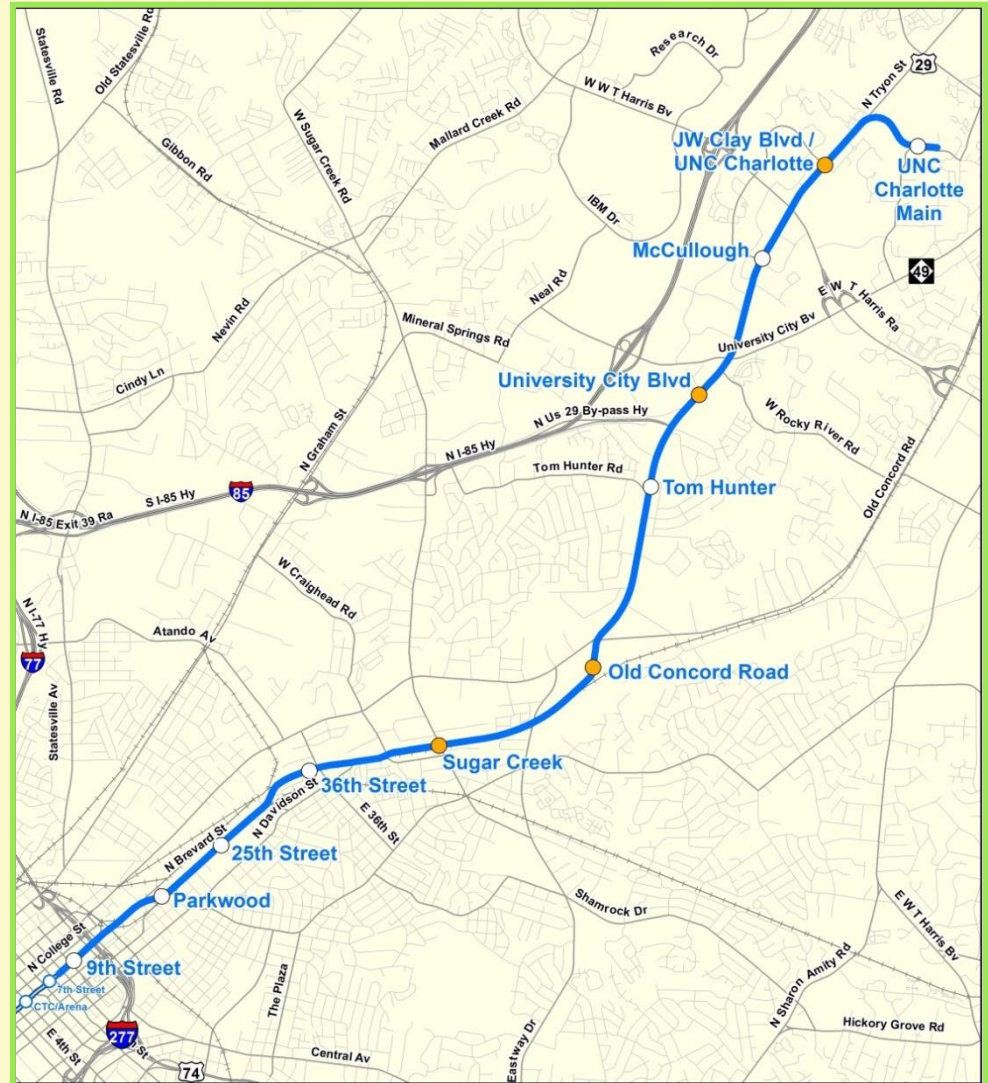
Zoning Ordinance and Other Regulations

Capital Investments

Private Sector Development

LYNX Blue Line Extension (BLE) Project Overview

- 9.3 miles
- 11 stations
 - 4 park and ride facilities
- 25,000+ daily riders
- 22 minute commute from Uptown to UNC Charlotte
- Connecting bus services
- Revenue service in 2017



2013

Dec. - Public Workshop No. 1 – Vision and Land Use

2014

Feb. – Public Workshop No. 2 – Transportation and Community Design

March – Public Workshop No. 3 – Review of recommendations

April – Nov. – Plan Development

Dec. – Public Workshop No. 4 – Review of final draft policy recommendations

2015

Jan. – March – Review & Adoption

What is different?

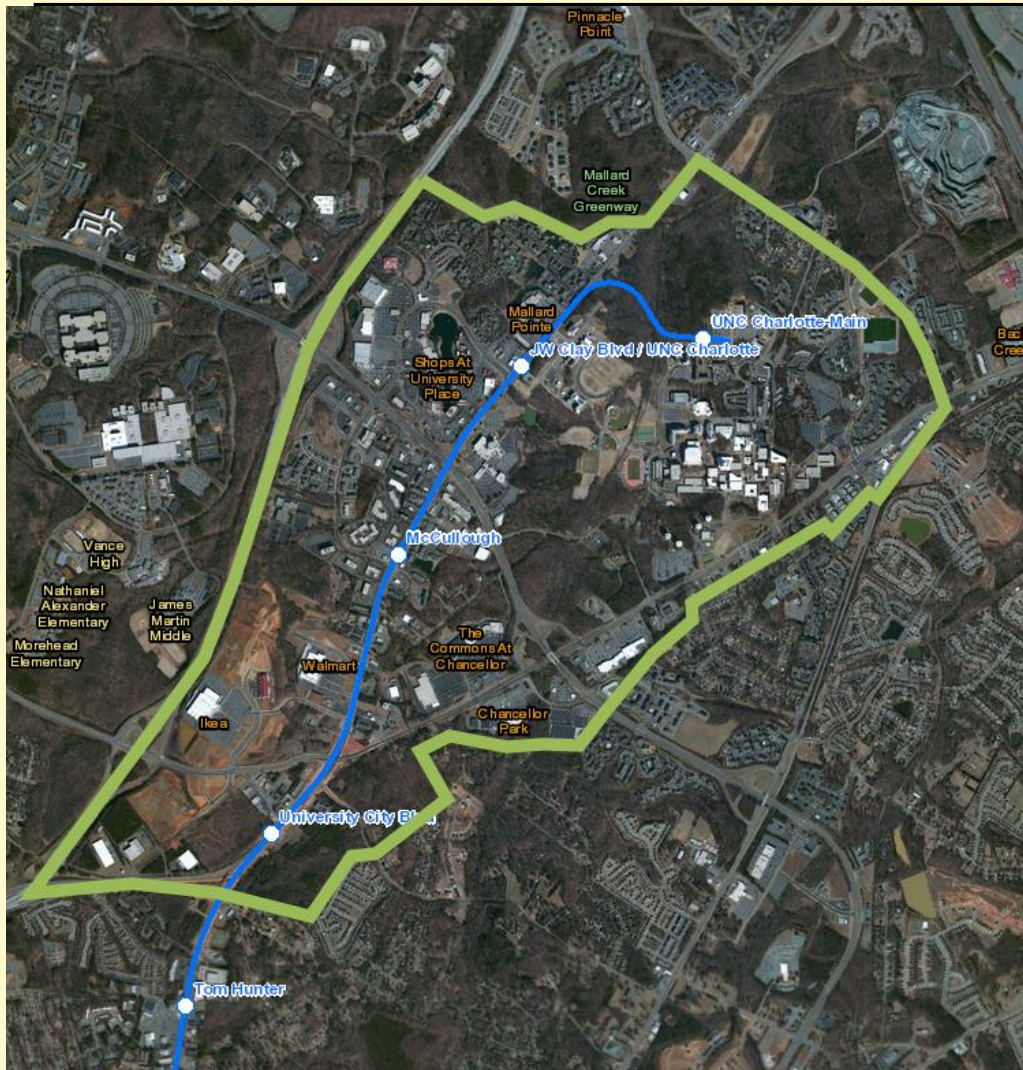
- Geographically specific policies
- More detailed guidance
- Emphasis on implementation
- Flexible outreach strategies

Why:

- Development Opportunities
- Area Planning Enhancements
- N. Tryon St. Impacts

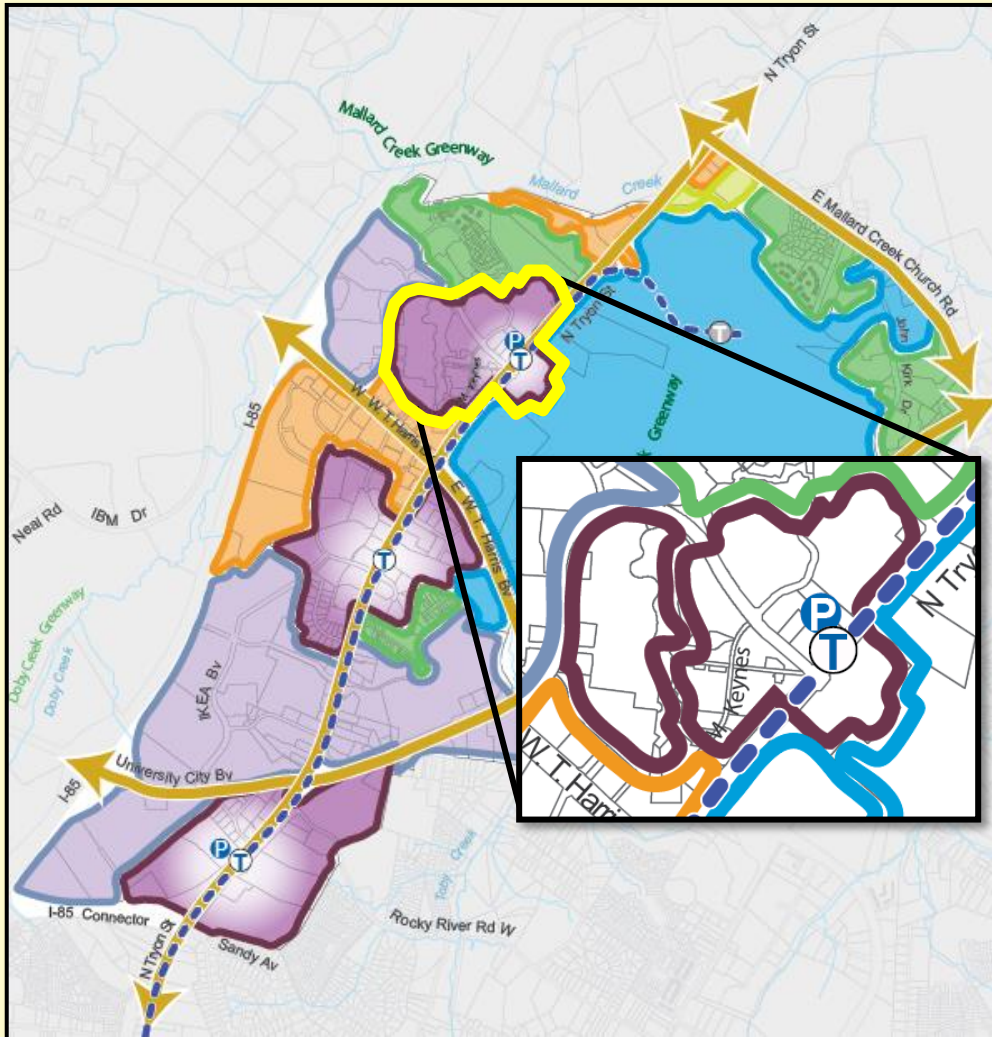
Character Areas

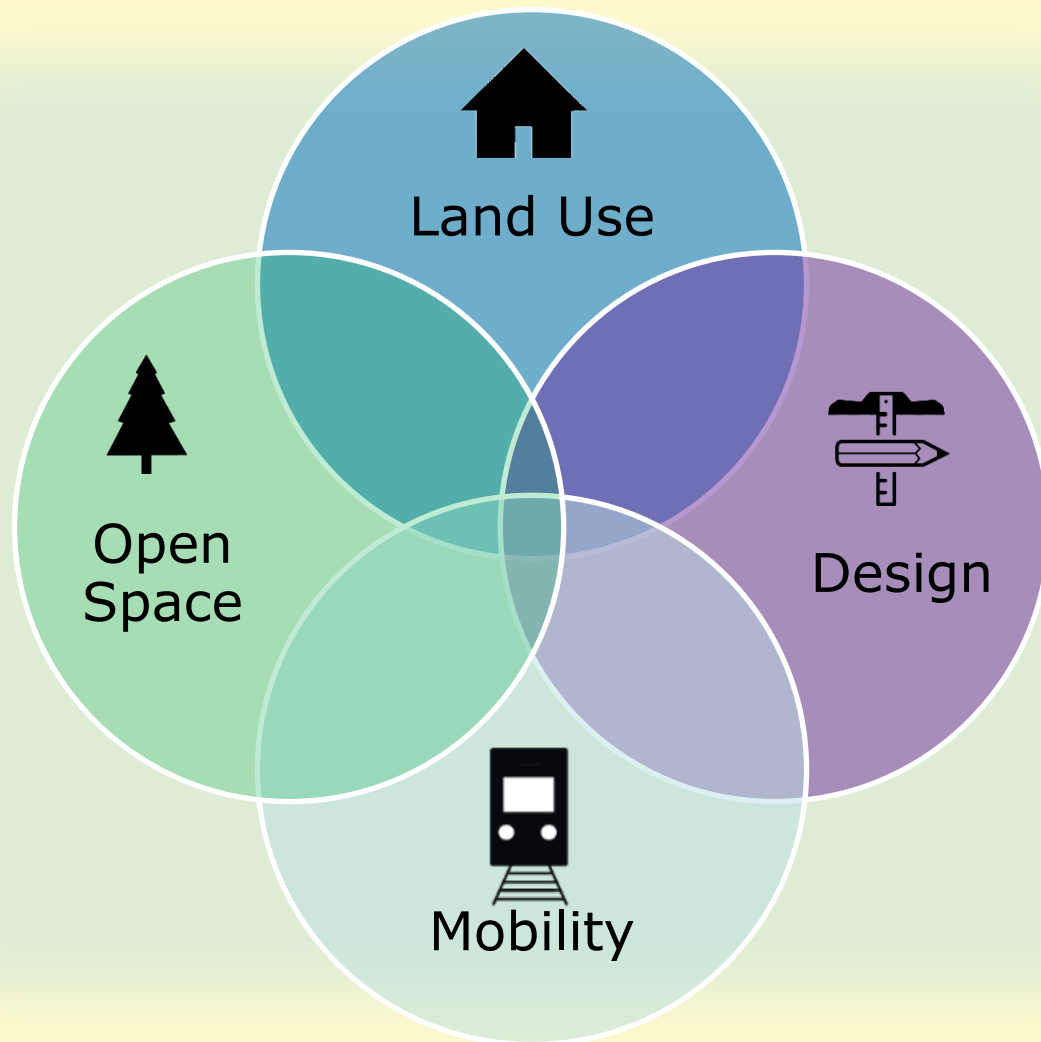
- 11 Character Areas
- General desired development patterns
- The “Big Picture”



Policy Areas

- 23 Policy Areas
- Specific Policy Guidance
- Greater detail





**Building Blocks of
Physical Form**



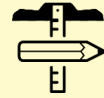
Land Use

- Appropriate uses
- Mix of uses
- Ground floor uses
- Inappropriate uses



Mobility

- Street connections and improvements
- Multi-use paths and pedestrian crossings
- Block lengths
- Driveway access



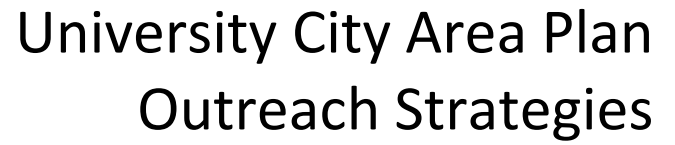
Community Design

- Building height, location and orientation
- Street frontage treatment
- Parking location and screening
- Ground floor treatment
- Designing for pedestrians



Open Space

- Preservation
- Walking trails
- Consolidation of open space
- Greenways and overland connectors
- Gathering places



2015

Jan. – Planning Committee public comment
– TAP Committee referral to Council for public comment

Feb. – City Council public comment
– Planning Committee recommendation
– TAP Committee recommendation

March – City Council Action

Thank You!

<http://UCAP.charlotteplanning.org>

Updates for Blue Line Extension

Follow us on Twitter and Facebook:

 **@BLEupdates**

 **Facebook.com/CATSBlueLineExtensionUpdates**