

BELGATE
REZONING PETITION
CHARLOTTE, NORTH CAROLINA

OWNER/
DEVELOPER

Crescent Resources, LLC
400 S. Tryon Street, Suite 1300
Charlotte, NC 28285
980.321.6000

LANDSCAPE ARCHITECT

LandDesign, Inc.
223 North Graham St.
Charlotte, NC 28202
704.333.0325

SHEET INDEX:		
		SUBMITTED
RZ-1	Technical Data Sheet	01/28/08
RZ-2	Conceptual Site Plan	01/28/08
RZ-3	Development Standards	01/28/08
RZ-4	Architectural - Retail Shops	03/25/08
RZ-5	Architectural - Multi-Family	03/25/08
RZ-6	Architectural - Furniture Row	03/25/08
RZ-7	IKEA Buffer Exhibit	05/05/08

TRANSPORTATION

Kimley-Horn and Associates, Inc.
4651 Charlotte Park Drive, Suite 300
Charlotte, NC 28217
704.333.5131

ZONING CONSULTANT

Kennedy, Covington, Lodbell,
and Hickman, LLP
Hearst Tower, 47th Floor
214 N. Tryon St.
Charlotte, NC 28202
704.331.7400

APPROVED BY
CITY COUNCIL
MAY 10 2008

REVISIONS:
03/25/08 Revise per Staff Comments
04/22/08 Revise per Staff Comments
05/05/08 Revise per Staff Comments
05/16/08 Revise per Staff Comments

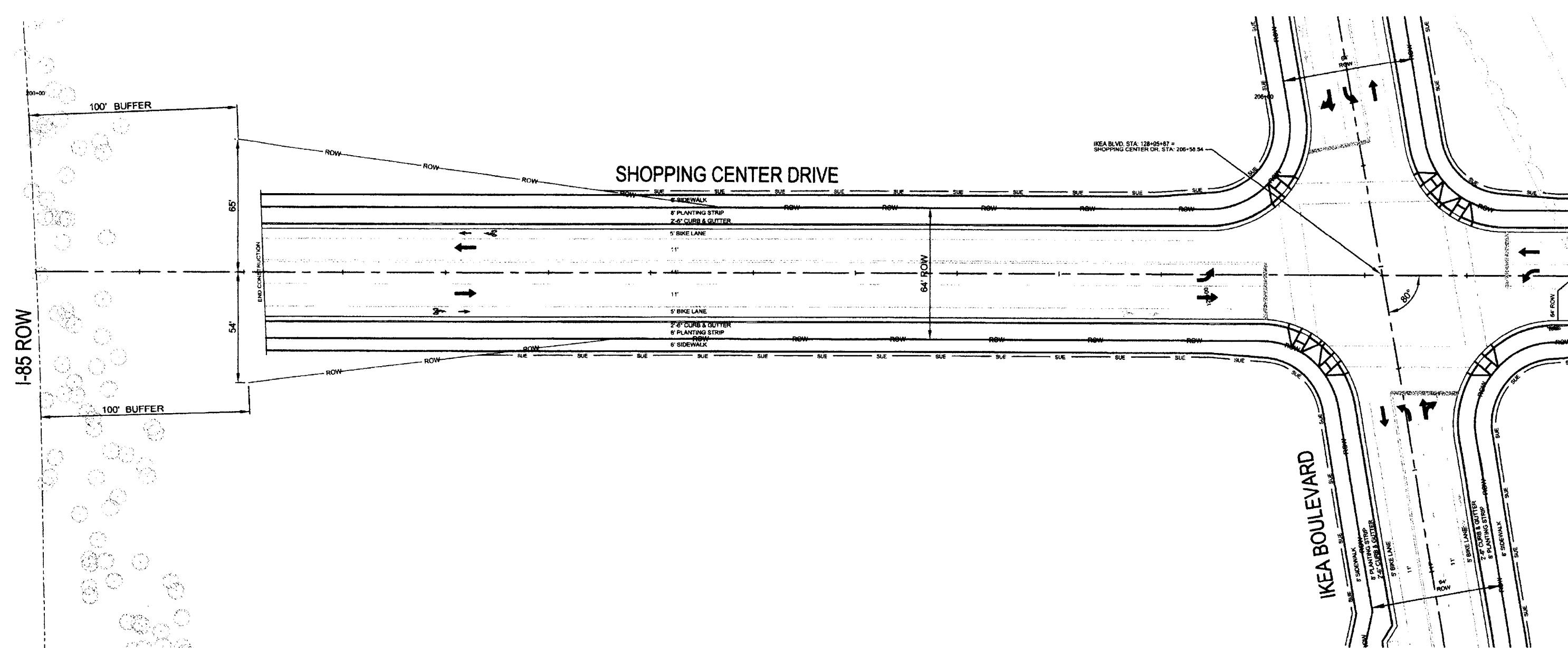
DATE: 01/28/08
DRAWN BY: KST
CHECKED BY: MFC
SCALE: N/A
PROJECT #: 100704
SHEET #:

Belgate - Rezoning Petition
Charlotte, North Carolina
Crescent Resources, LLC
COVER

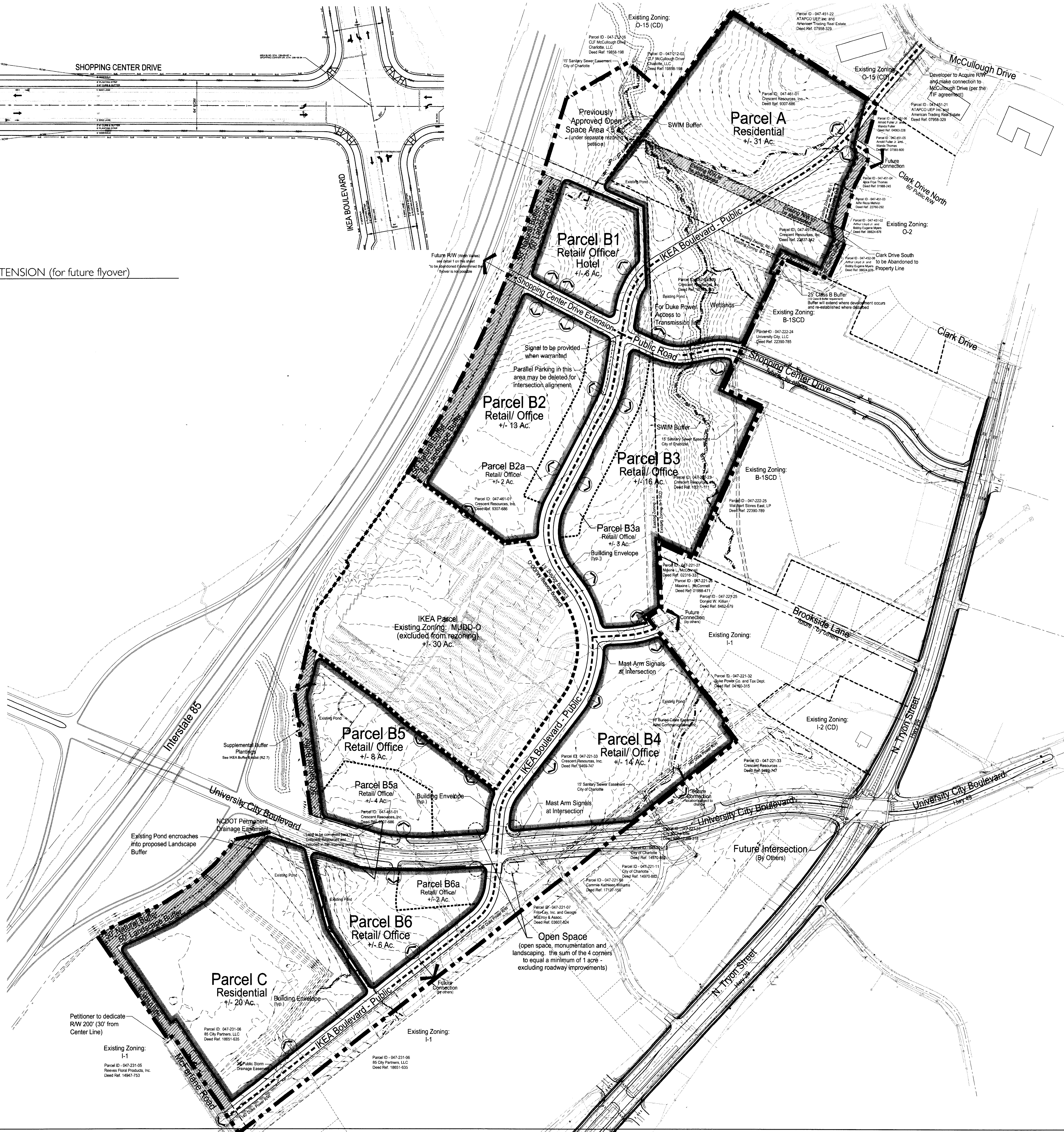
Cover



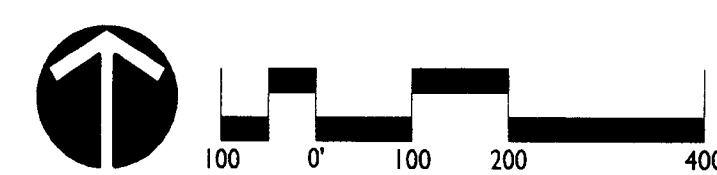
LandDesign
223 N. Graham Street, Charlotte, NC 28202
704.333.0325
www.LandDesign.com

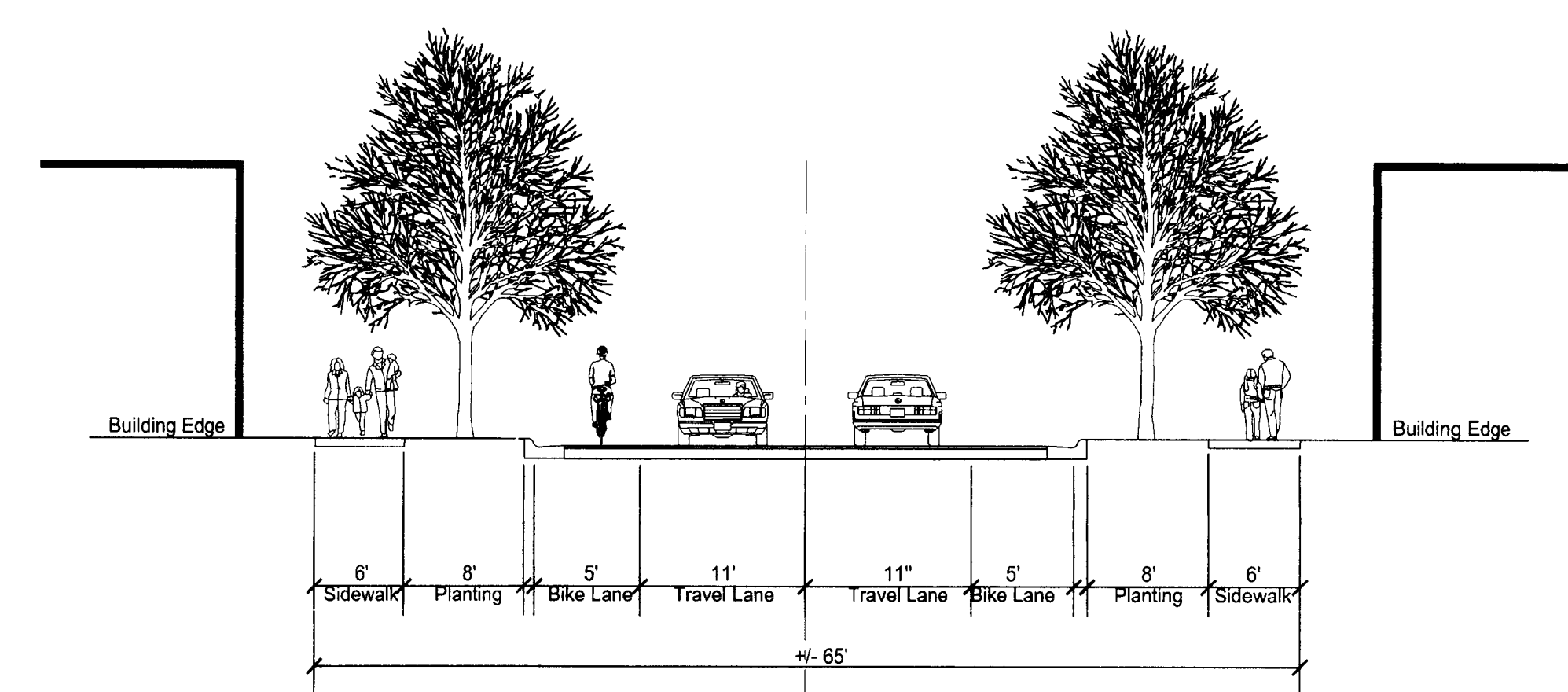


SHOPPING CENTER DRIVE EXTENSION (for future flyover)
DETAIL 1

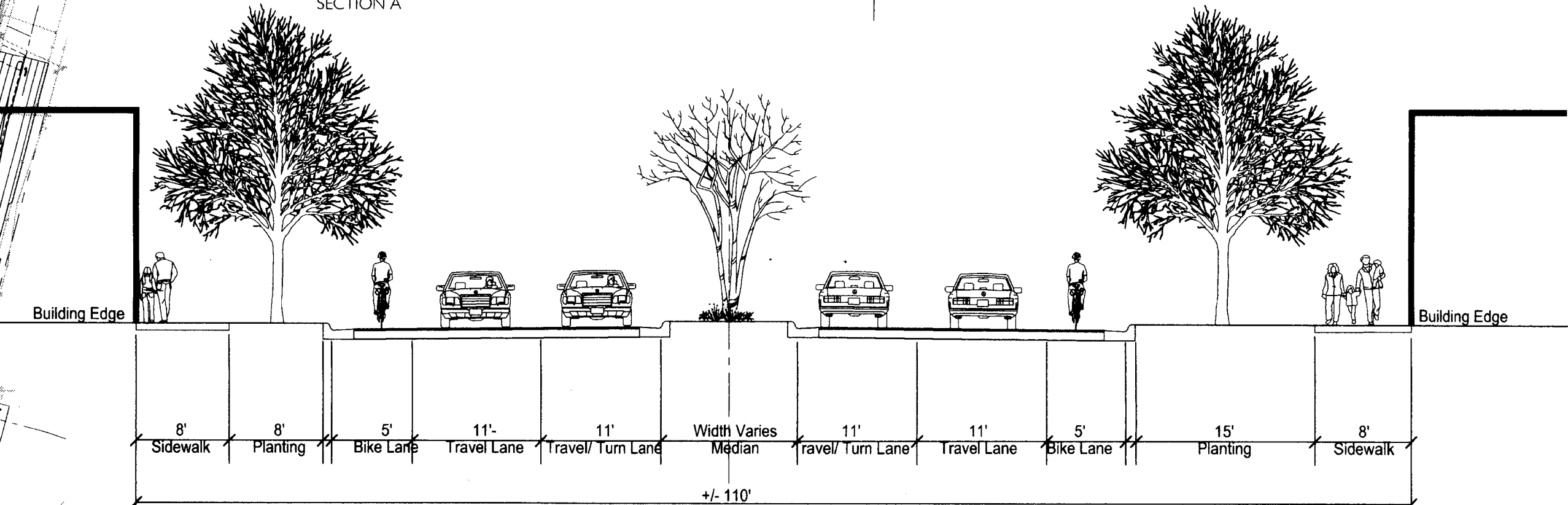


Site Data	
Site Area:	+/- 198 Ac.
IKEA parcel:	+/- 30 Ac.
Total:	+/- 168 Ac.
Parcels A, B, C:	+/- 125 Ac.
Undeveloped:	+/- 43 Ac.
** (buffers, previously approved treesave, circulation, undevelopable land...etc)	
Open Space:	+/- 30 Ac. (18%)
**excludes previously approved open space (5 ac.)	
Current Zoning:	O-2, RE-1, B-1 SCD, I-1, MUDD-O
Proposed Zoning:	CC

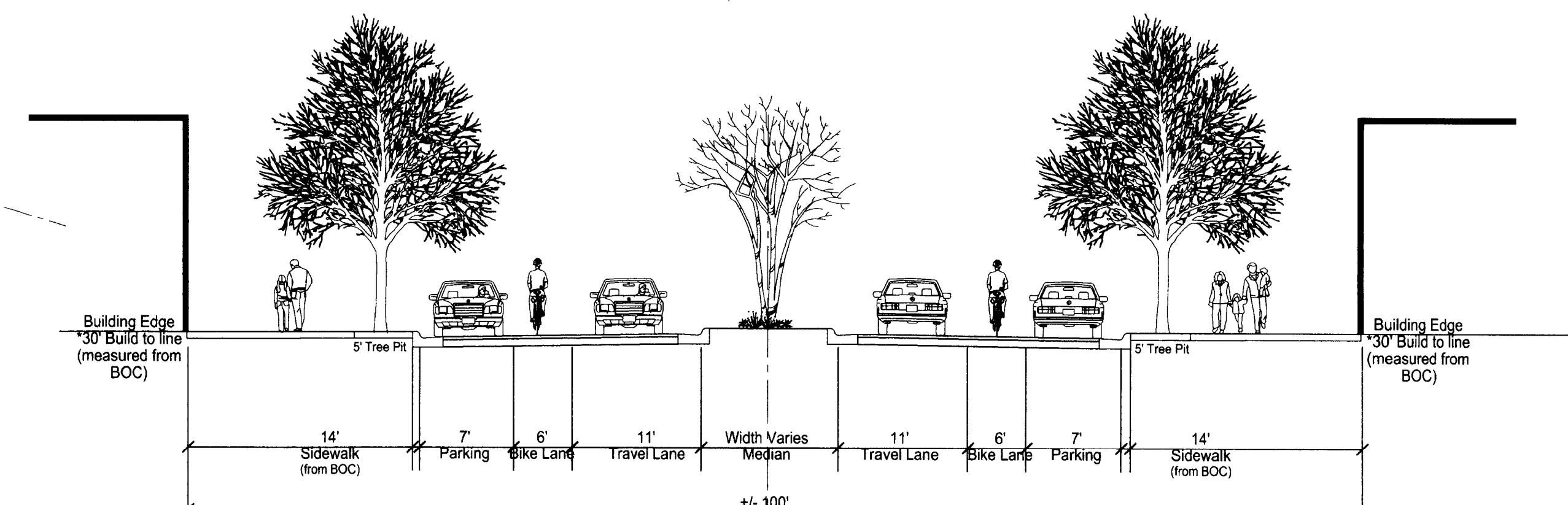




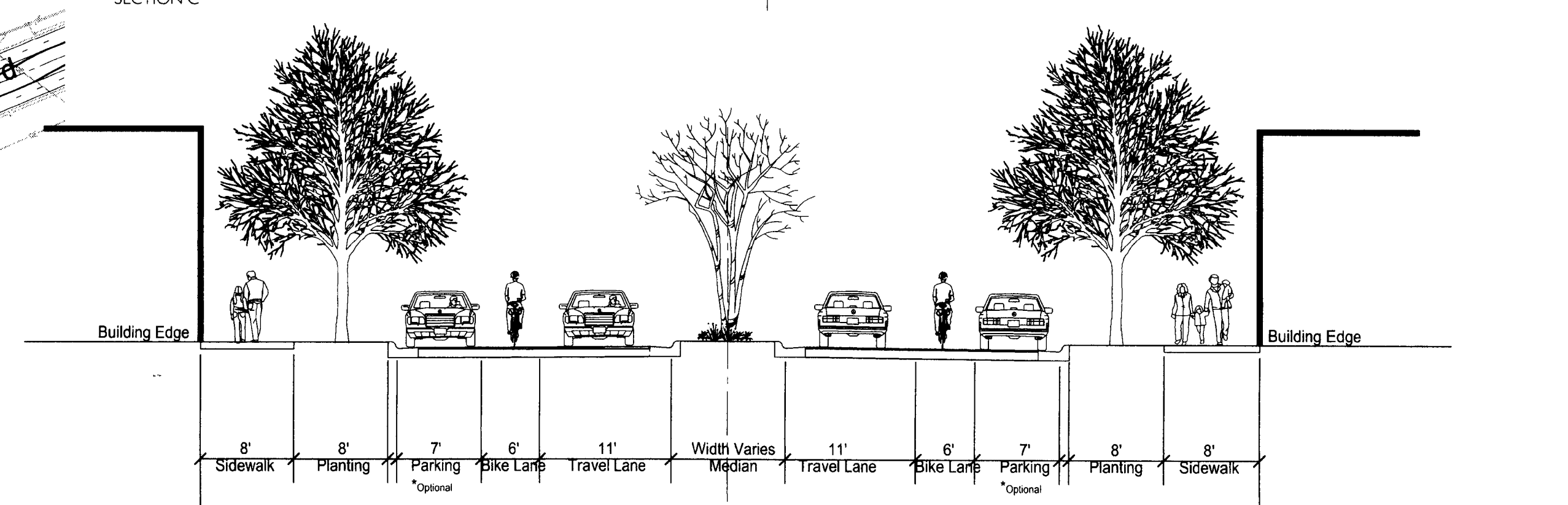
SHOPPING CENTER DRIVE EXTENSION/ BROOKSIDE LANE



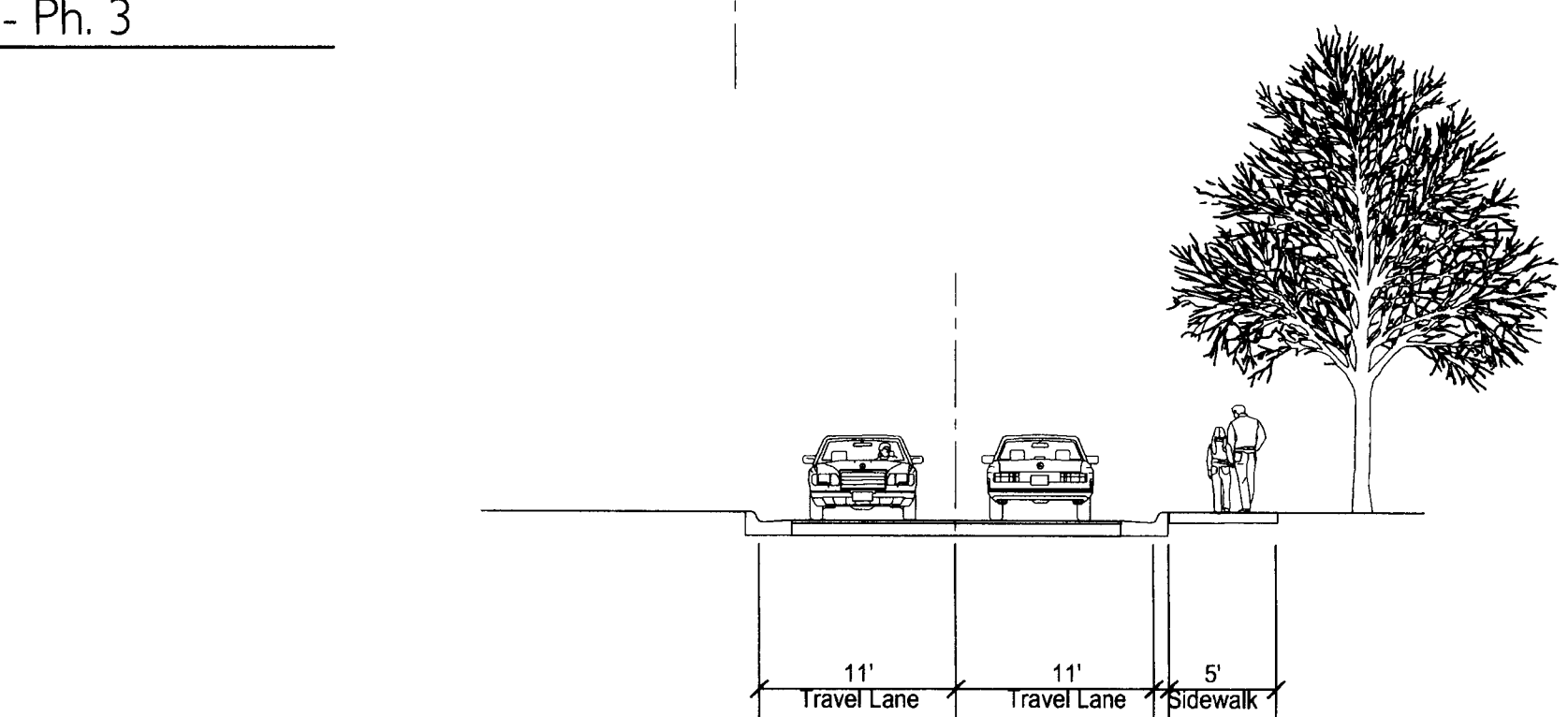
IKEA BLVD - Ph. I



IKEA BLVD - Ph. 2



IKEA BLVD - Ph. 3



PRIVATE STREETS (typ.)

