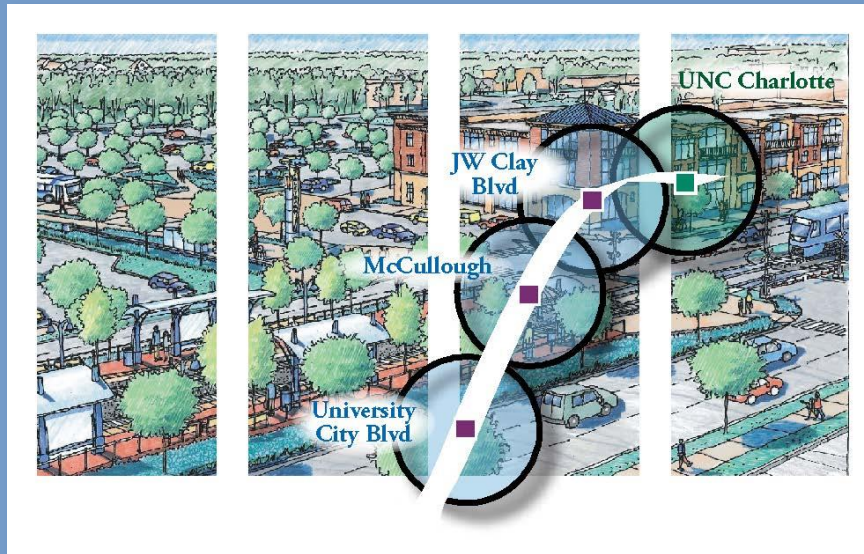


**Welcome to the
LYNX Blue Line Extension &
University City Area Plan
Community Meeting!**

**Presentation will begin
at 6:00 P.M.**

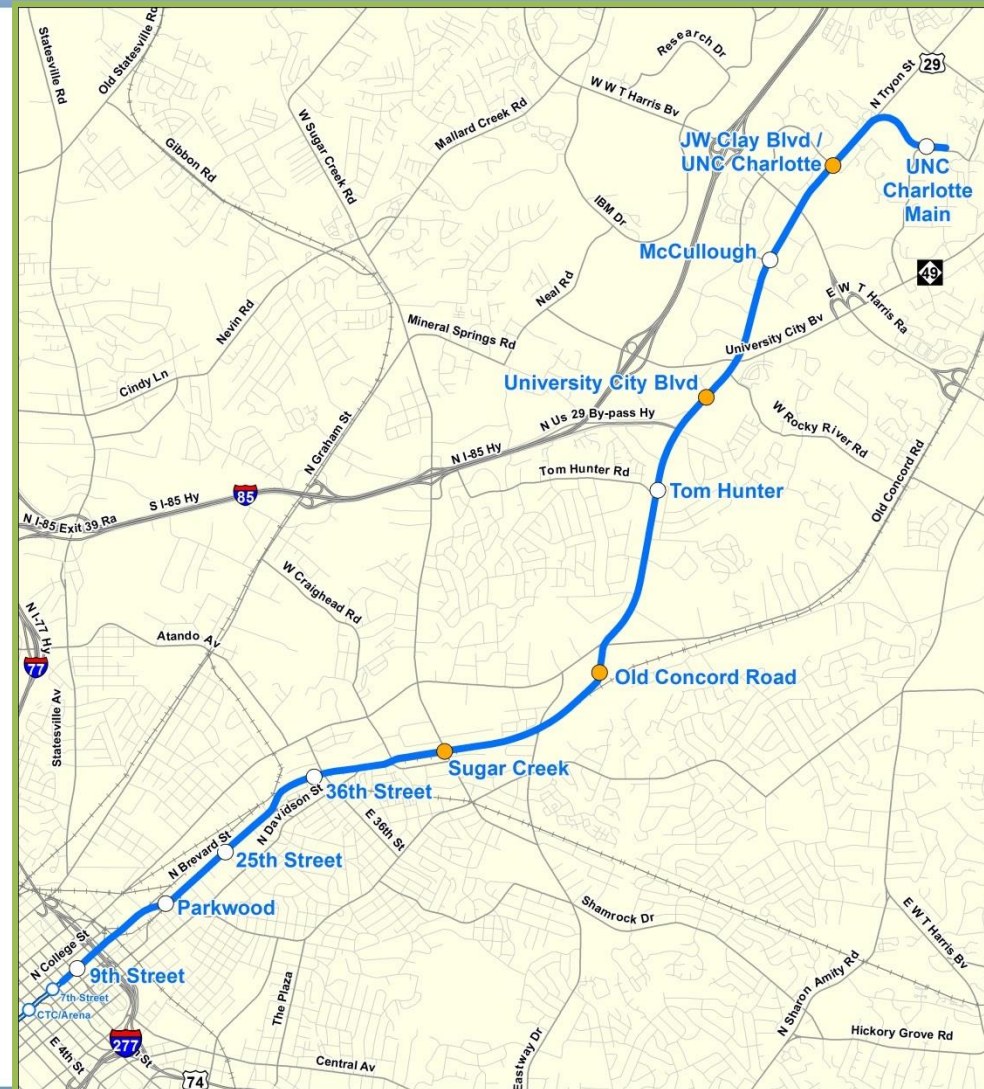
Welcome!



- BLE Construction Update
- UCAP Process Recap
- UCAP Recommendations Review
- Break-out sessions
- Questions and wrap up

LYNX Blue Line Extension (BLE) Project Overview

- 9.3 miles, 11 stations
- 4 park and ride facilities
- Approximately 3,100 parking spaces
- Accommodates 3-car trains
- 25,000+ daily riders
- Improvements to North Tryon St.
- Connects UNC Charlotte campuses
- 22 minute commute from Uptown to UNC Charlotte
- Initial peak period service 7.5 minute frequency
- Connecting bus services
- Revenue service in 2017



Blue Line Extension Construction Update



UPTOWN

- Closures
 - East 8th Street
- Overhead Power Relocation
 - (Temporary)
- Installing Storm Drainage & Relocating Sanitary Sewer
 - 7th to 9th Streets



Uptown to Old Concord

- Closures
 - 16th Street
 - E 36th Street
 - Eastway Drive
- Installing Storm Drainage (North Yard)
- Waterline Installation
- Retaining Wall Construction
- Old Concord Station Foundation
- Grading for Parkwood Station

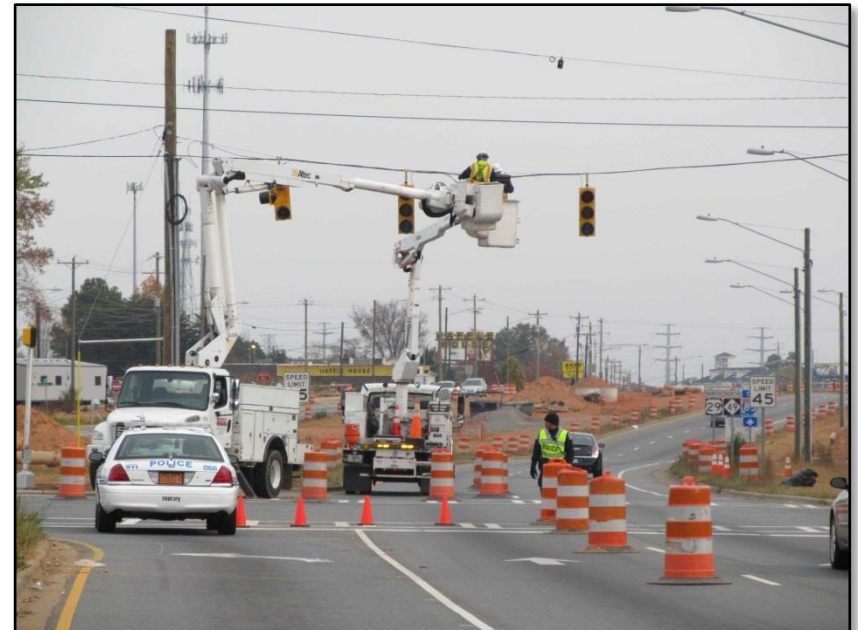




36th Street Station

Along North Tryon:

- Private utility and traffic signal relocations continue along N. Tryon St.
- Waterline work along Northbound N. Tryon St. from Old Concord Rd. to Heathway
- Upcoming construction of new roadway outside of travel lanes

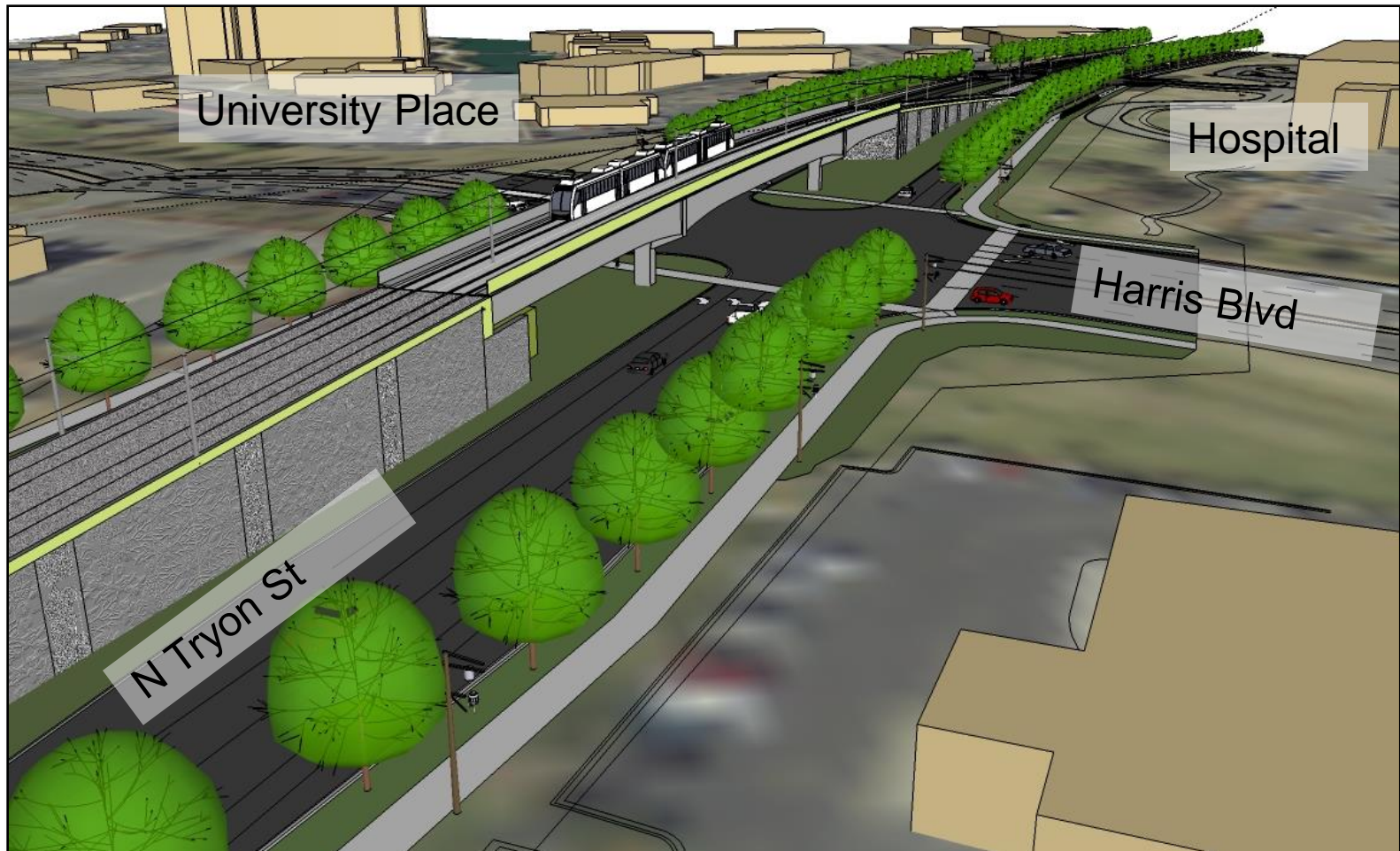


Construction continues on retaining walls along the alignment:

- JW Clay to JM Keynes
- Grove Lake to Institute Circle
- Barton Creek to Grove Lake



Light rail bridge over W.T. Harris Boulevard



UNC Charlotte station area:

- Building light rail bridge across Toby Creek
- Hauling in fill & grading
- Installing storm drainage



University City Blvd. Parking Deck



- 6 levels with approx. 1,500 spaces for cars
- 24 covered bicycle spaces
- 3 bus bays along a private driveway
- A pedestrian bridge on the fourth level will connect the parking garage to the north end of the station platform
- 5 retail spaces

J.W. Clay Parking Deck



- 5 levels with approx. 800 spaces for cars
- 14 covered bicycle spaces
- 2 bus bays
- A pedestrian bridge on the third level connecting the parking deck to the north end of the station platform
- 7 retail spaces

How You Can Stay Informed

Follow us on Twitter and Facebook:

 @BLEupdates

 [Facebook.com/CATSBlueLineExtensionUpdates](https://www.facebook.com/CATSBlueLineExtensionUpdates)

 **Notify Me**

FOR PAGE UPDATES

Email alerts - Notify Me

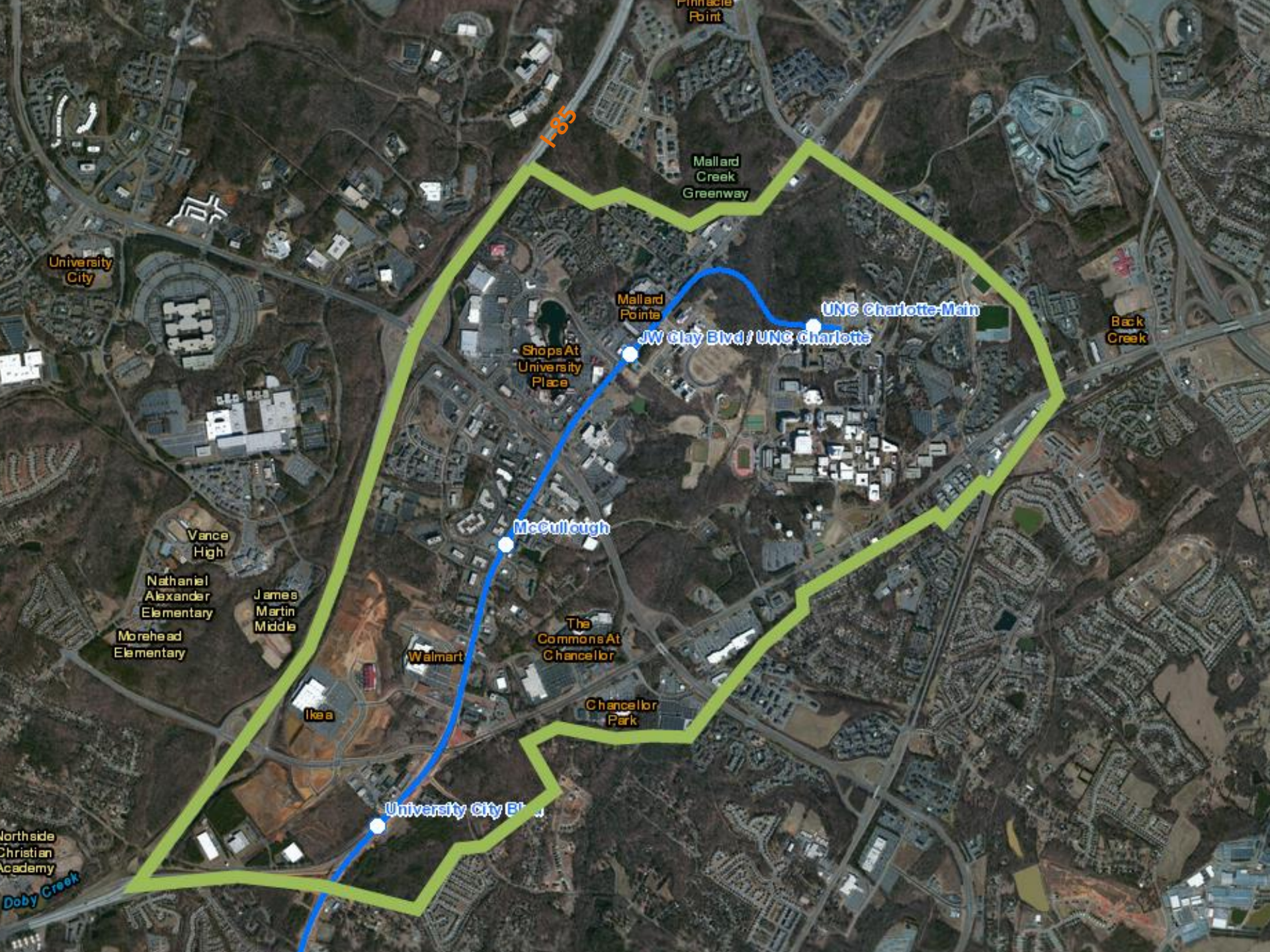
CATS Customer Service: 704-336-RIDE (7433)

City of Charlotte Customer Service: 311

Email: bluelineextension@charlottenc.gov

www.charlottefuture.com

Be Informed. Be Connected. Be In The Know.



University City

I-85

Mallard Creek Greenway

Mallard Pointe

UNC Charlotte - Main

Shops At University Place

JW Clay Blvd / UNC Charlotte

Back Creek

McCullough

Vance High

Nathaniel Alexander Elementary

James Martin Middle

Morehead Elementary

Walmart

The Commons At Chancellor

Ikea

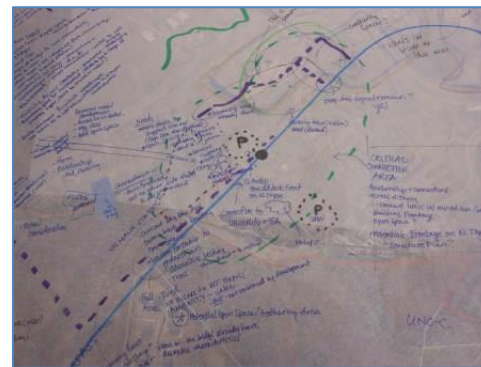
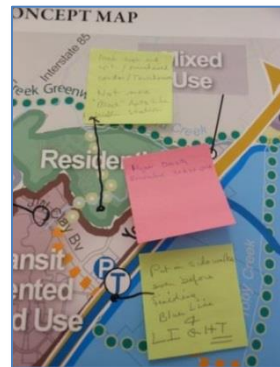
Chancellor Park

University City Blvd

Northside Christian Academy

Doby Creek

University City Area Plan Process Recap

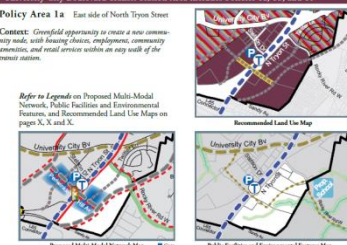


Community Development Policies for Policy Area 1a
University City Boulevard Transit Station Area Includes Policies 1a, 1b, and 1c

Policy Area 1a: East side of North Tryon Street

Context: *Opportunities to create a new community node, with housing choice, employment, community amenities, and retail services within an easy walk of the transit station.*

Refer to Legends on Proposed Multi-Modal Network, Public Facilities and Environmental Features, and Recommended Land Use Maps on pages XX, X, and X.



1. Land Use and Development Policies

- The core (shown in blue on Multi-Modal Map above, as defined in the glossary on pg. XI) should be the most intensely developed part of the transit station area. Development should include a mix of residential, office, hotels, civic, and/or retail use. The ground floor of buildings should be activated primarily with retail and other commercial use. Structured parking should be located with active uses along the street. Drive-through windows and fast lanes are not appropriate in this area.
- In areas outside of the core, but within approximately 500 feet of N. Tryon St., residential and office should be the primary uses. Retail is only appropriate on the ground floor of residential and office buildings. Hotels are also appropriate. Structured parking should be located with active uses along the street.
- Development outside of the core and beyond approximately 500 feet of N. Tryon St. should incorporate a diversity of housing types, such as single-family, duplexes, triplexes, quadruplexes, rowhomes, and multi-family buildings. Retail services and offices are also appropriate if located on the ground floor of multi-family buildings. Structured parking should be located with active uses along the street.

14. Community Design Policies *Refer to general policies starting on page XX.*

University City Area Plan/CVNS Blue Line Extension Transit Station Area Plan Update

What we heard from you:

Consideration for parks and open space

Concern for impacts on other modes of transportation with addition of BLE infrastructure

Better connectivity needed for destinations (library, university campus, hospital, transit stations)

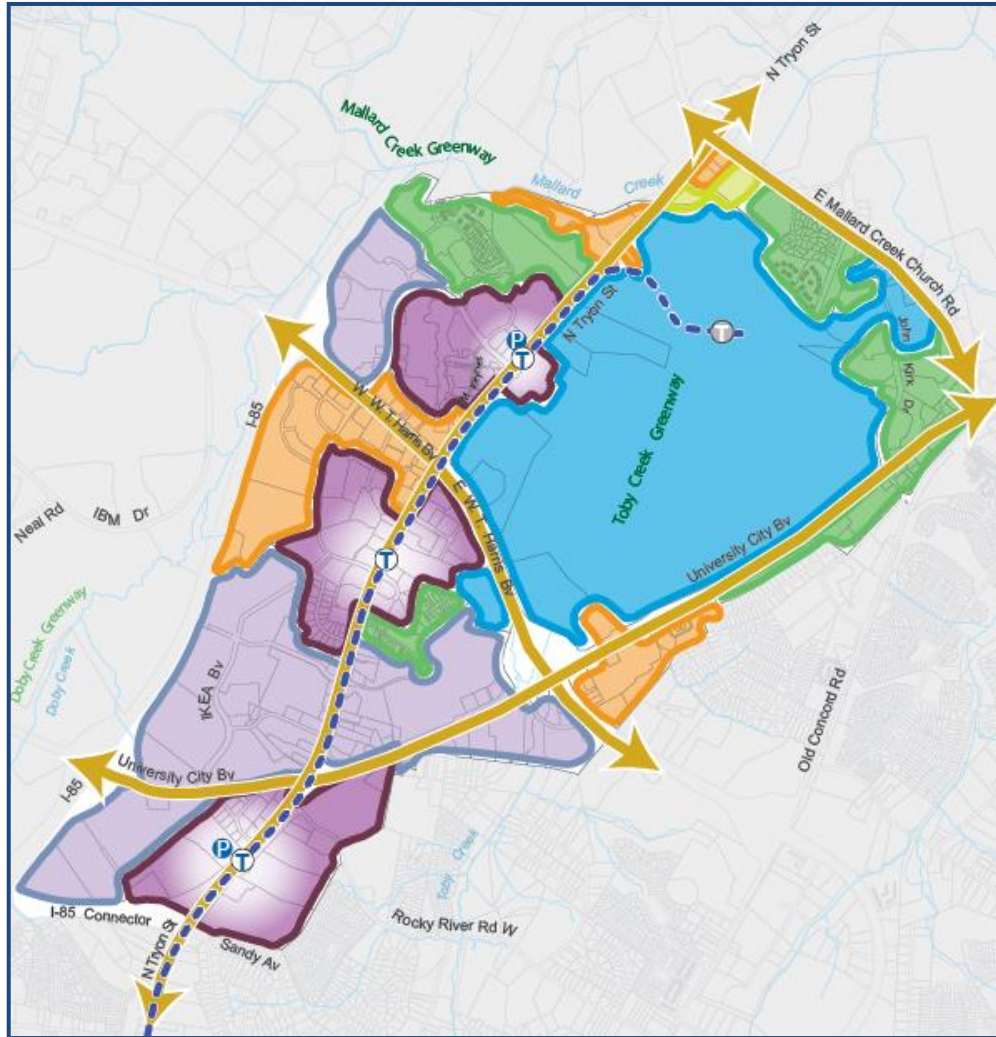
Major landmark needed for University City; Gateways

Importance of ground floor retail in transit station areas

Preservation of environmentally sensitive features

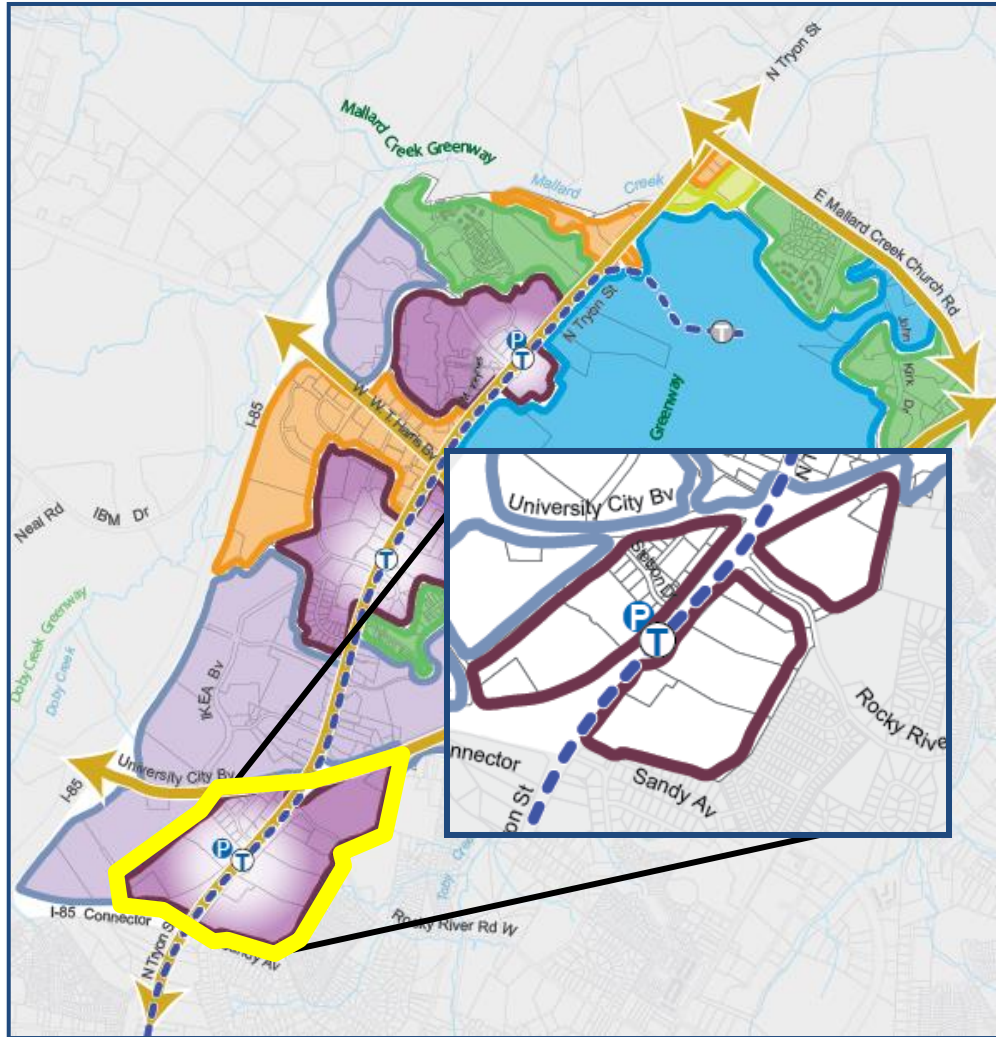
Desire for “town center” concept in University City

Encourage pedestrian and bicycle access, especially to/from university campus



Character Areas

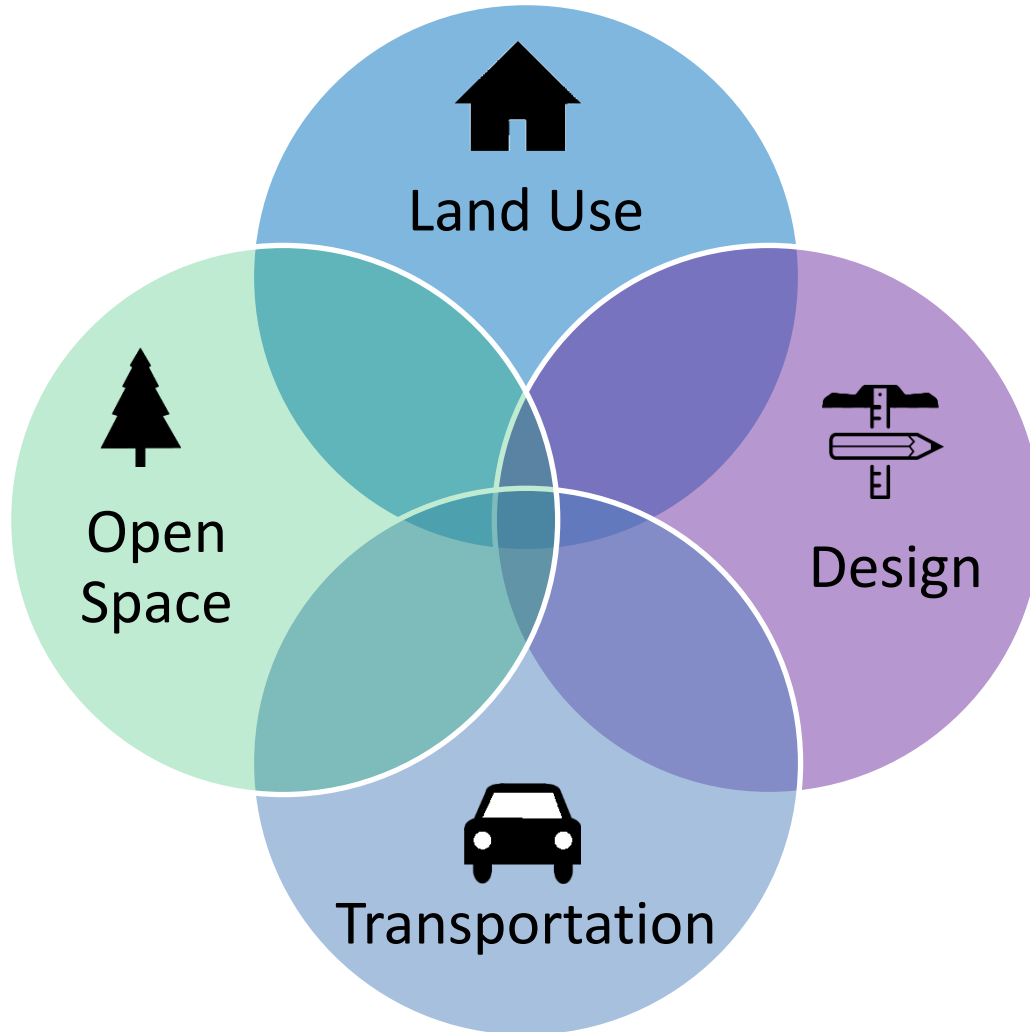
- 11 Character Areas
- General desired development patterns



Policy Areas

- 23 Policy Areas
- Specific Policy Guidance

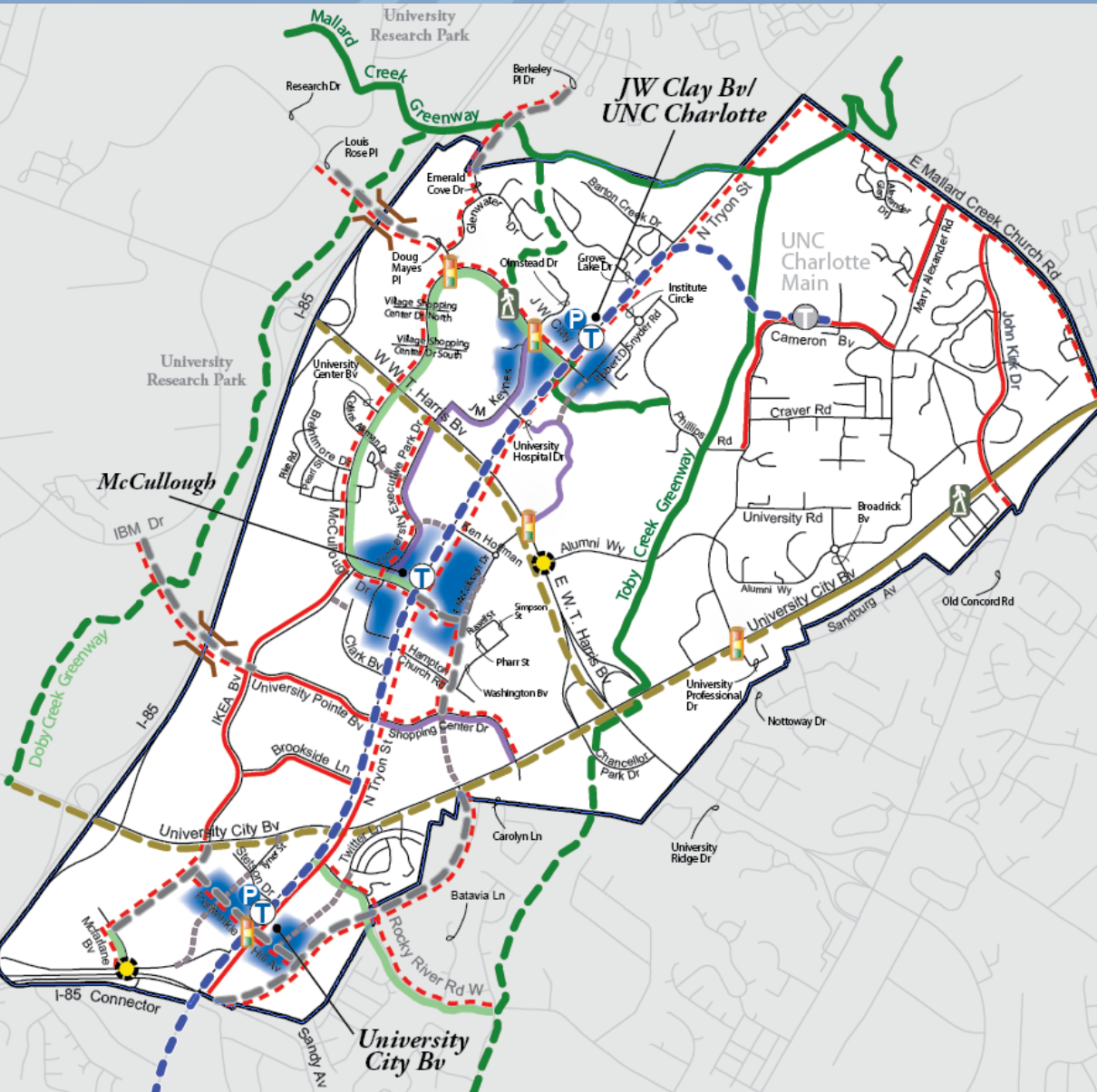
Building Blocks of Physical Form





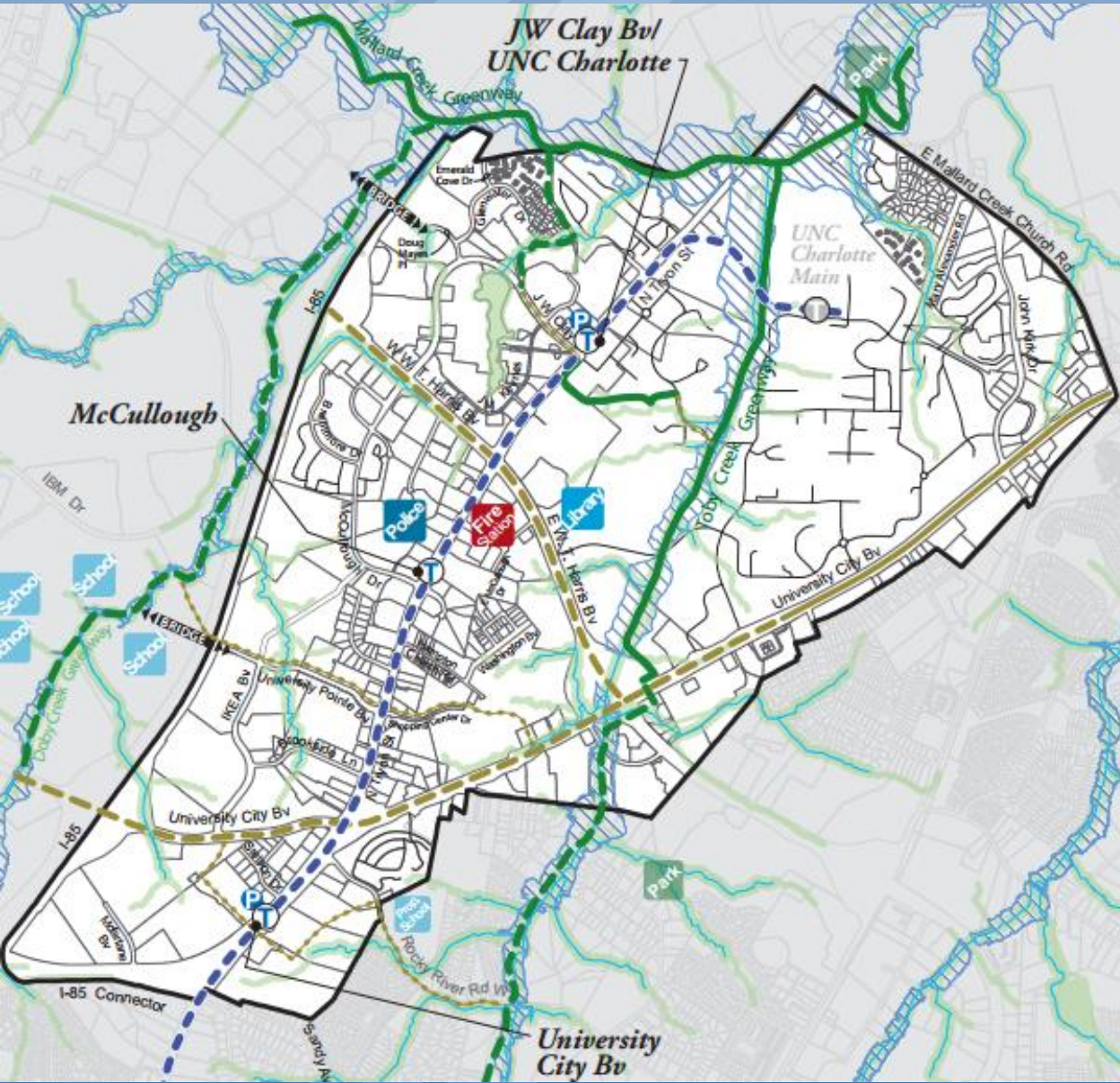
Future Land Use

- Generalized land use recommendations
- Must refer to policies for detailed land use recommendations



Future Transportation Network Map

- New street connections
- Bike lanes
- Intersection improvements
- Pedestrian facilities



Environmental Features and Public Facilities

- Existing and future greenways and bike/pedestrian connections
- Existing natural features:
 - Streams
 - Floodplains
 - Stream buffers
- Existing and proposed public facilities
 - Schools
 - Fire and police
 - Library

University City Blvd. Transit Station Area



- Intense mix of uses.
- Future transit neighborhood
- Variety of housing types.



- Urban in form
- Active street fronts.
- Sensitive to adjacent residential development



- Expanded street network
- Signalized intersection



- Integrated open space system
- Consolidated open space



McCullough Transit Station Area



- Employment and supporting services
- Future mix of uses



- Increase in height
- Reduction in surface parking
- Urban form



- Expanded street network
- Increase pedestrian and bike connectivity



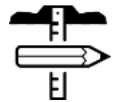
- Open space amenities new development.



JW Clay Blvd./UNC Charlotte Transit Station Area



- University City's town center
- Destination for shopping, working, living, and entertainment



- Urban in form
- Active street fronts
- Build off existing assets



- Enhance pedestrian and bicycle network
- New local streets and bridge



- Consolidate required open space
- Enhance existing features
- Future Barton Creek Greenway



Residential



- Maintain and enhance existing neighborhoods
- Variety of housing types



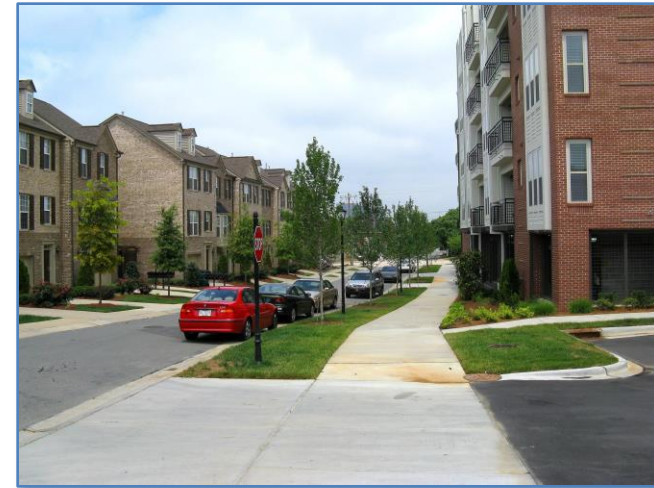
- Compatible buildings and site design
- Encourage pedestrian and bike activity



- Expanded street networks
- Emphasis on pedestrian and bicycle connections



- Connections to adjacent greenways
- Open space amenities



Service Areas: Regional and Corridor



- Regional and local retail and office
- Mixed use with residential



- Serve both automobile and pedestrians/bicycles
- Safe bike and pedestrian access



- Provide alternatives to traveling on major streets
- Multi-use paths



- Connectivity to greenways
- Open space networks
- Cohesive visual barriers



UNC Charlotte and CMC University



- Established anchors
- Variety of uses adjacent to station



- Cohesive corridors
- Urban form adjacent to the station

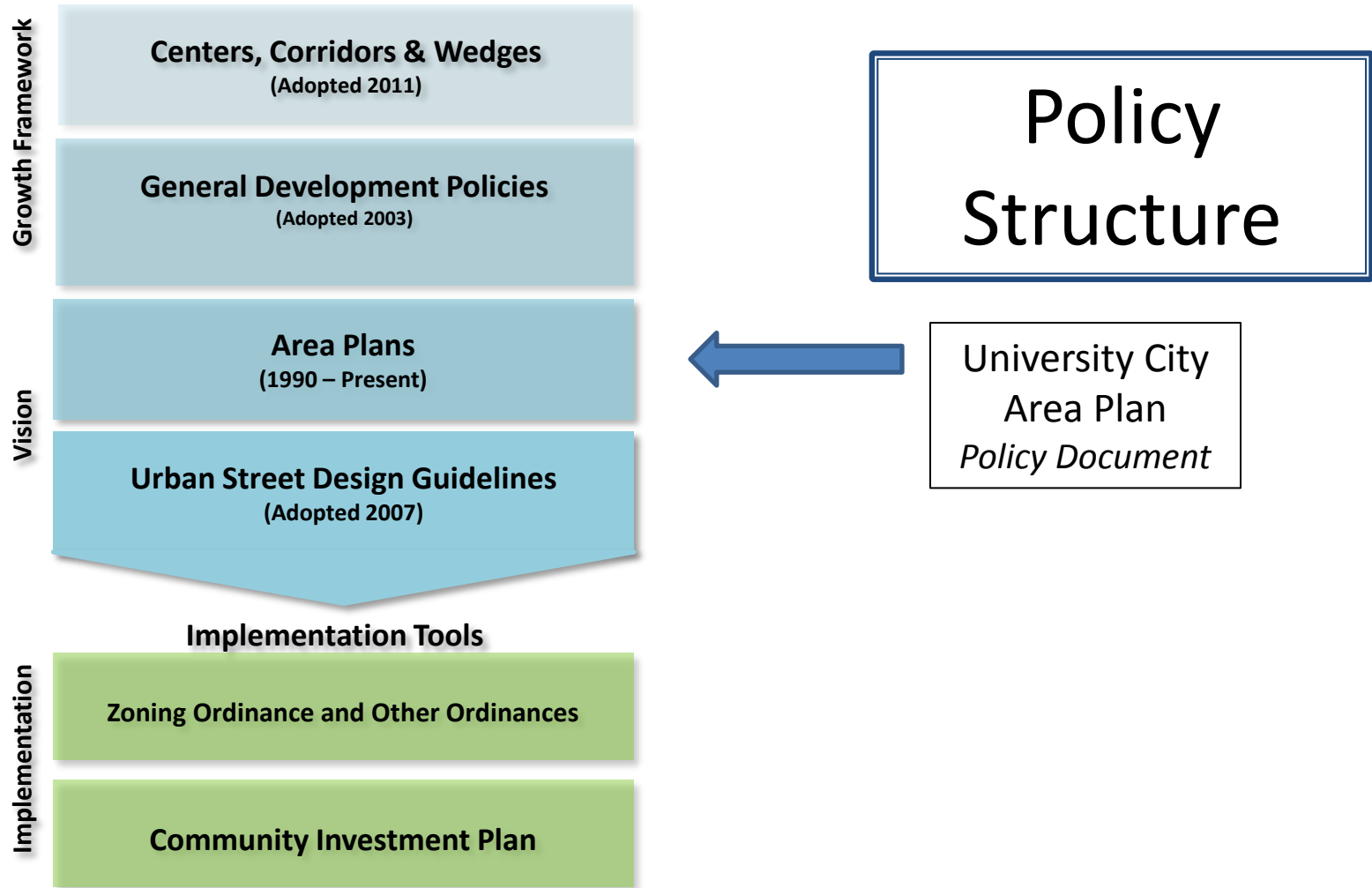


- Connection between the hospital and the university
- Sidewalks along University Hospital Dr.

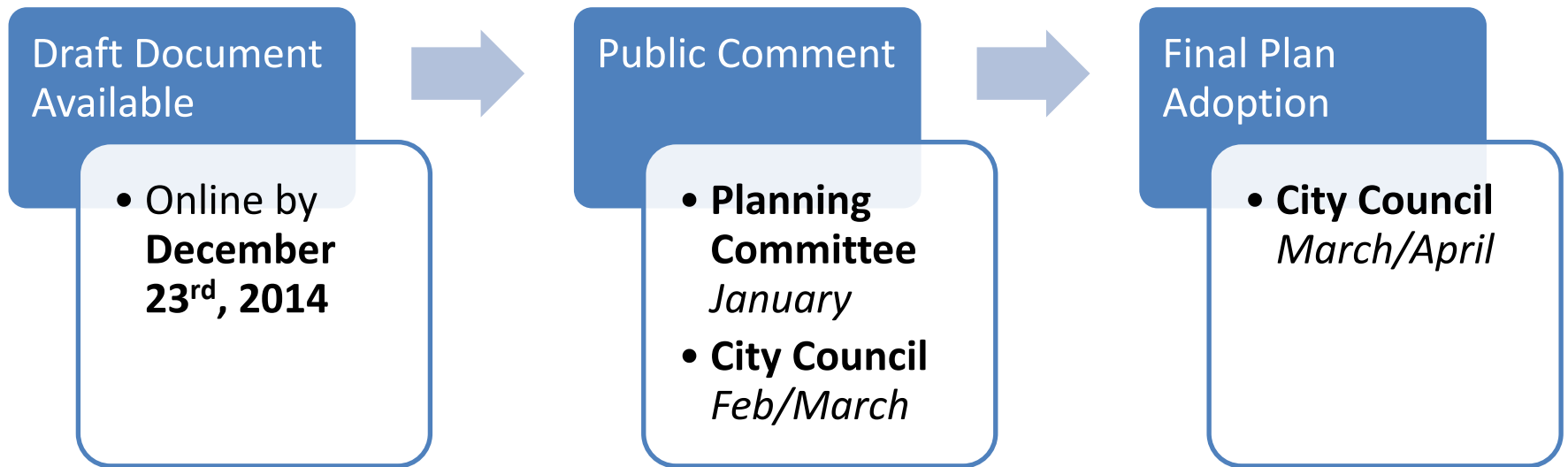


- Open space and walking trails
- Link to the Toby Creek Greenway





Next Steps: Review and Adoption



**Meeting dates subject to change*

How to Comment on Plan

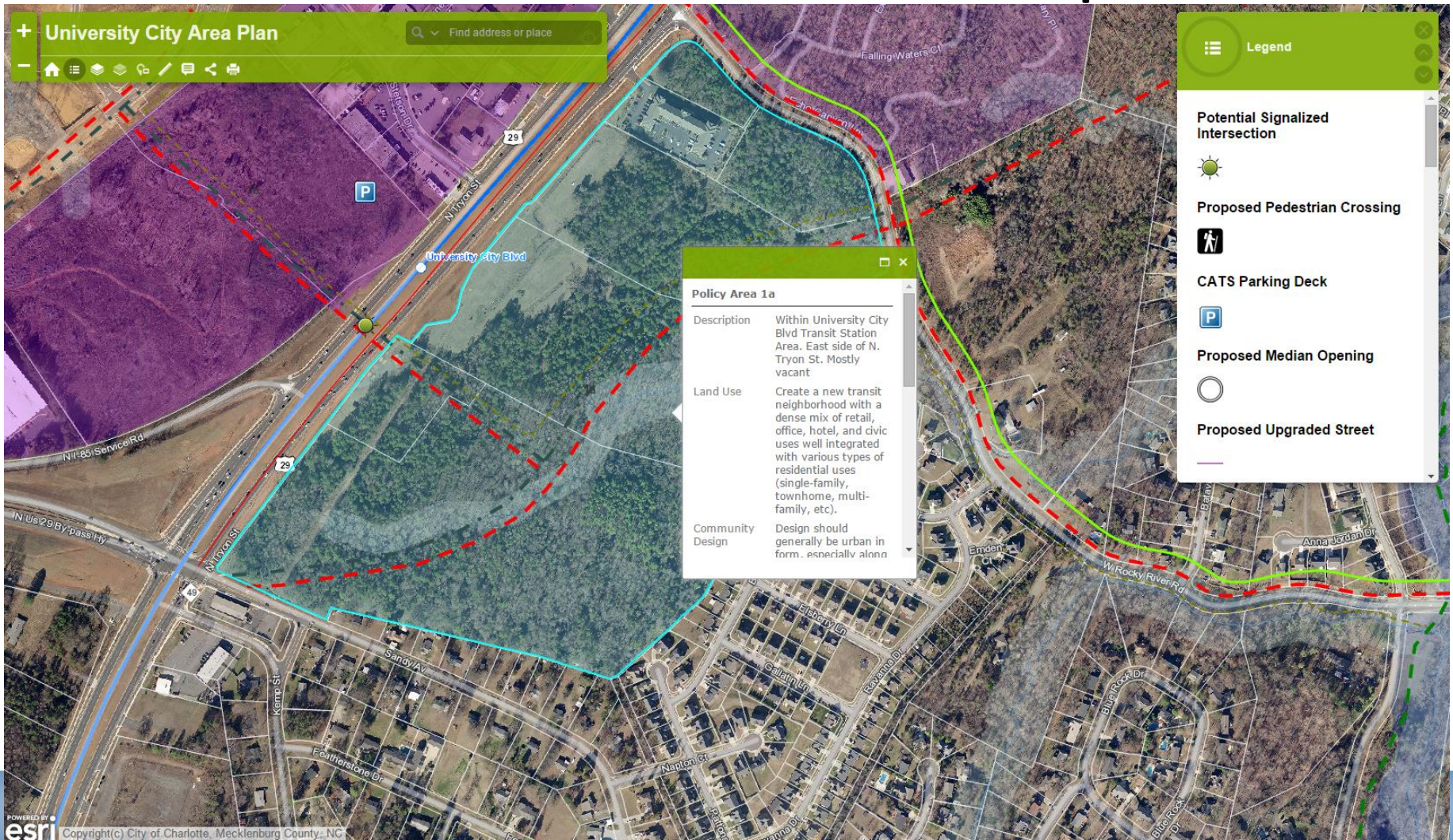
Leave comments with staff tonight

Email BLEStationAreaPlans@charlottenc.gov

Call Planning Staff at 704-336-5718

Attend Public Comment opportunities at Planning Committee and/or City Council meetings

Interactive Online Map



Breakout Session

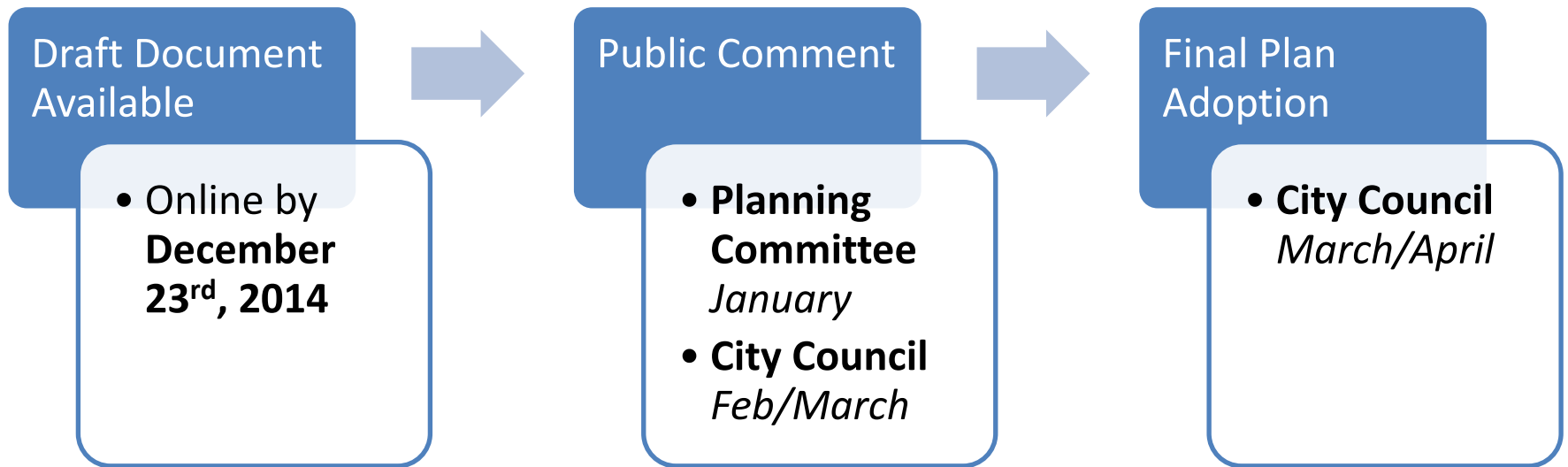
**Stations set up for Land Use & Design, Transportation,
and Open Space Recommendations**

Interactive Map Station

Tables around the room: City/County Staff

We will break for 30 minutes and wrap up at 7:30pm

Next Steps: Review and Adoption



**Meeting dates subject to change*

Thank You!

<http://UCAP.charlotteplanning.org>

Follow us on Twitter and Facebook:

 @BLEupdates

 [Facebook.com/CATSBlueLineExtensionUpdates](https://www.facebook.com/CATSBlueLineExtensionUpdates)

How to Comment on Plan

Leave comments with staff tonight

Email BLEStationAreaPlans@charlottenc.gov

Call Planning Staff at 704-336-5718

Attend Public Comment opportunities at Planning Committee and/or City Council meetings