



Charlotte Regional Transportation Planning Organization

Overview

December 2014 Planning Commission Meeting

Charlotte-Mecklenburg Planning serves as lead planning agency for CRTPO

Staff

Curtis Bridges, AICP

Principal Planner

Neil Burke, AICP, PTP

Sr. Principal Planner

Robert Cook, AICP

Program Manager

Candice Leonard, PE

Planning Coordinator

- Federally-designated metropolitan planning organization (MPO) for the Charlotte urbanized area
- Responsible for Iredell, Mecklenburg & Union counties
- Implements the “3-C” process

Membership

- 27 jurisdictions
- 14 cities & towns; 3 counties
- NC Board of Transportation
- Metropolitan Transit Commission

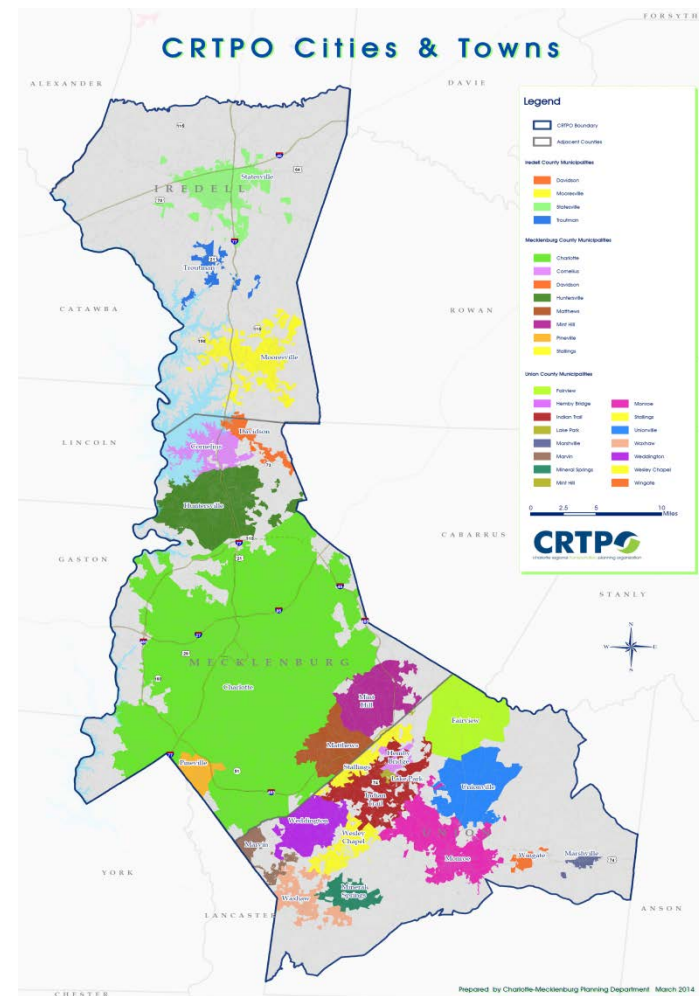
Two Committees

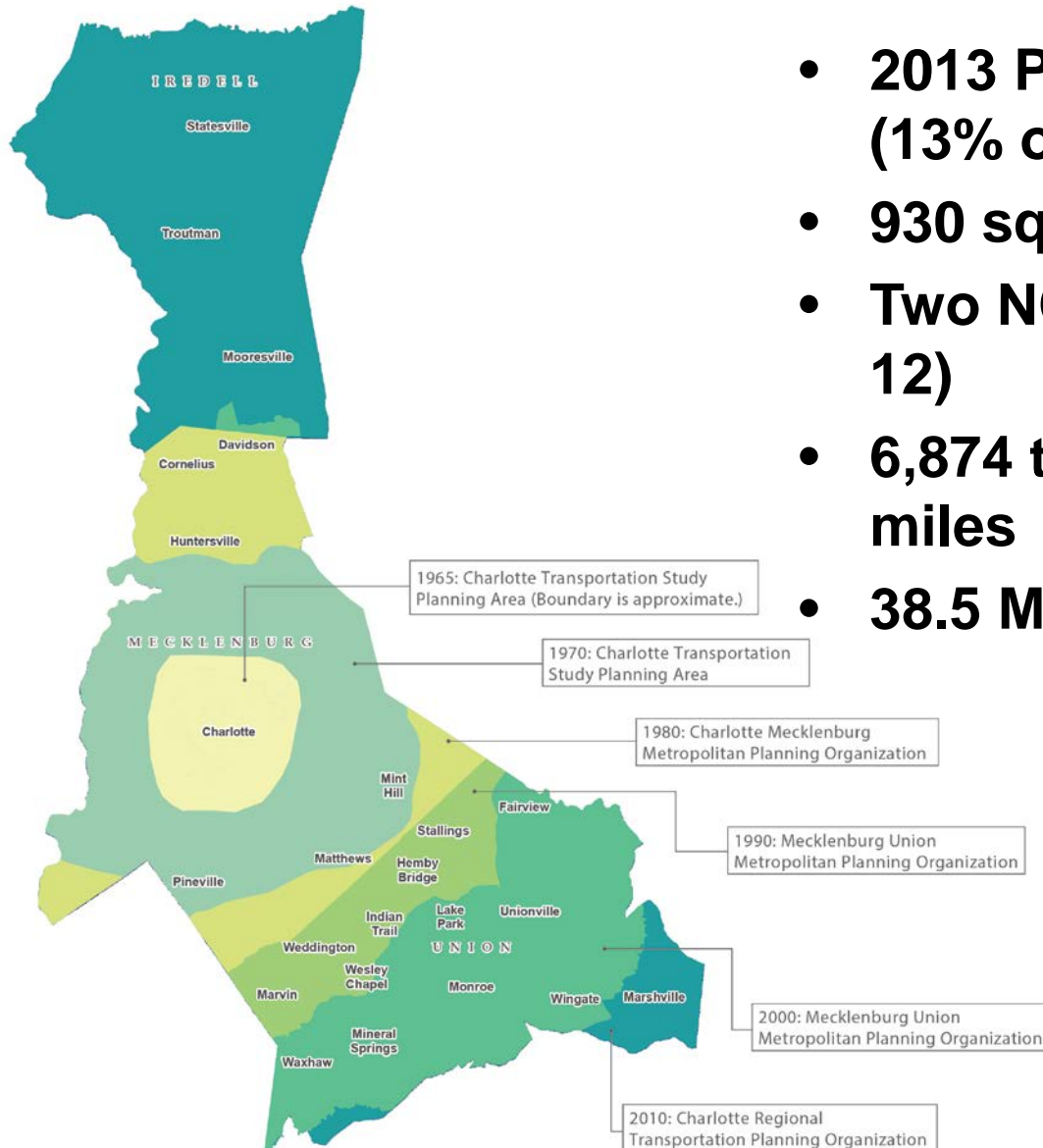
MPO

- 17 voting members
- 4 non-voting members
- All elected officials (except BOT member)
- Decision-making body

Technical Coordinating Committee

- 25 staff-level voting members
- Makes recommendations to the MPO

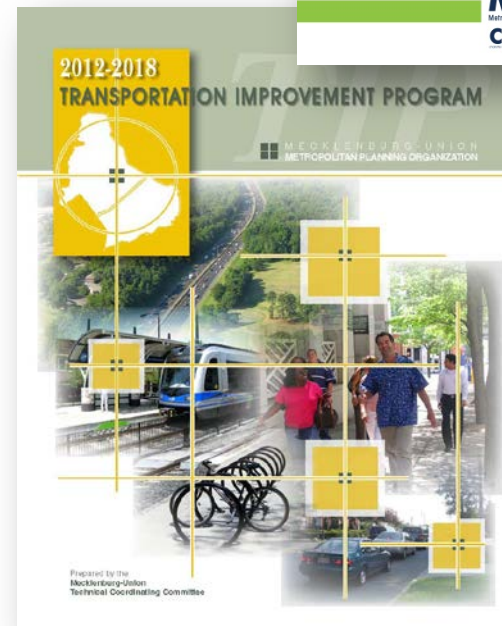
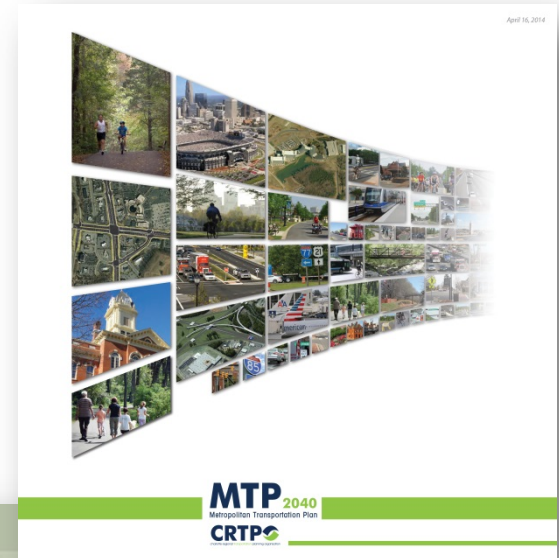




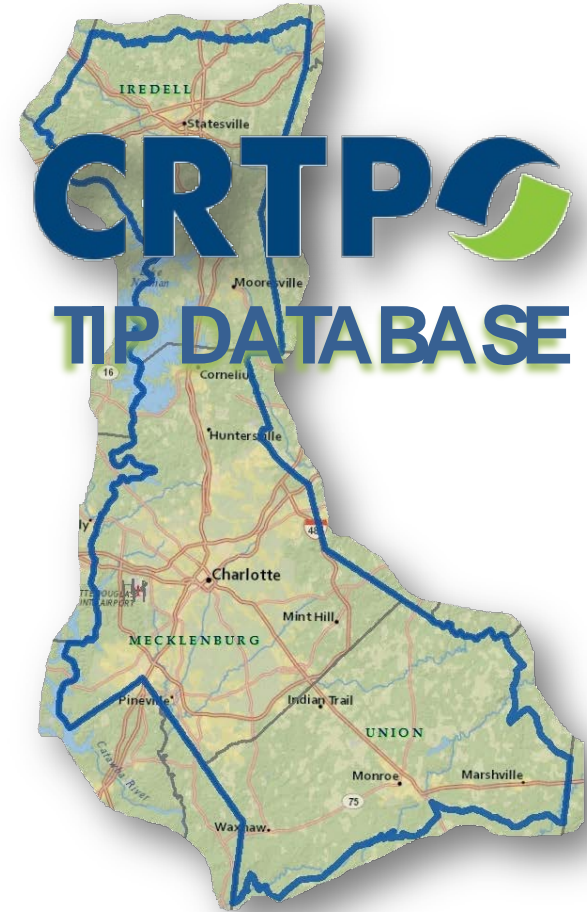
- **2013 Population is 1.2 million (13% of NC)**
- **930 square miles**
- **Two NCDOT Divisions (10 and 12)**
- **6,874 total roadway centerline miles**
- **38.5 Million Daily VMT (2010)**

- Primary responsibility
 - *Allocation of federal transportation funds; ensures funds spent in accordance with federal policy*
- Long-range transportation plans
- Transportation improvement programs
- Air quality conformity determinations
- Planning work programs

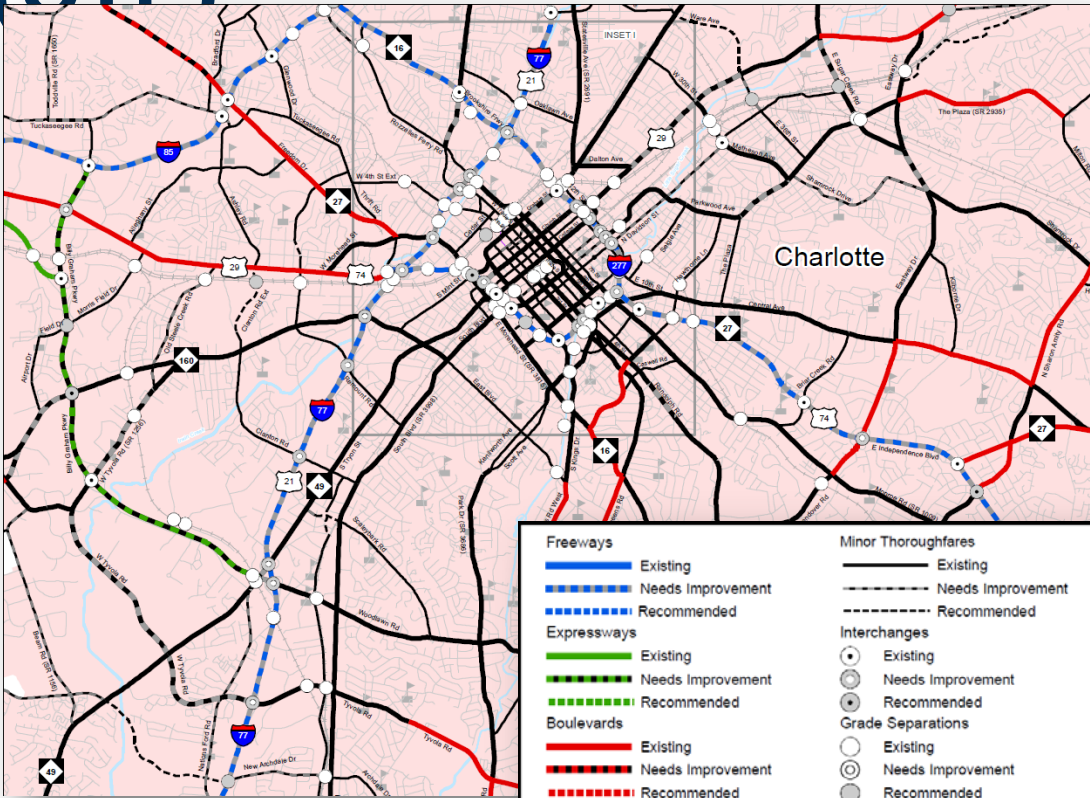
- Metropolitan Transportation Plan
- Transportation Improvement Program
- Project ranking-MTP & SPOT
- Congestion Management Process
- Air quality conformity
- Travel demand modeling
- Comprehensive Transportation Plan



CRTPO *Transportation Improvement Program (TIP)*



Comprehensive Transportation Plan (CTP)



Freeways Existing Needs Improvement Recommended Expressways Existing Needs Improvement Recommended Boulevards Existing Needs Improvement Recommended Other Major Thoroughfares Existing Needs Improvement Recommended	Minor Thoroughfares Existing Needs Improvement Recommended Interchanges Existing Needs Improvement Recommended Grade Separations Existing Needs Improvement Recommended
--	---

0 0.5 1 2 Miles

Sheet 2H of 5

Base map date: February 02, 2010

Refer to CTP document for more details

Highway Map
 Inset H

C RTP
 charlotte regional transportation planning organization

Charlotte Regional Transportation
 Planning Organization

North Carolina

DRAFT

**Comprehensive
 Transportation Plan**

Plan date: October 14, 2014

Metropolitan Transportation Plan (MTP)

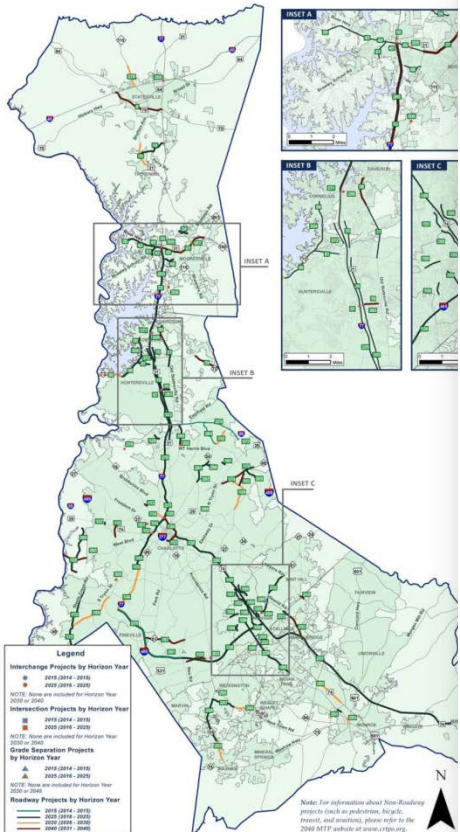
DRAFT

EXECUTIVE SUMMARY

MTP 2040
Metropolitan Transportation Plan

C RTP
charlotte regional transportation planning organization

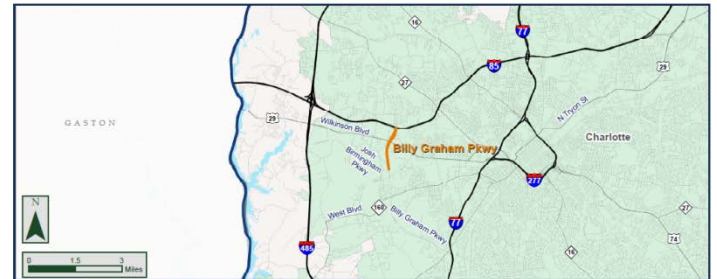
2040 Metropolitan Transportation Plan // Fiscally Constrained Roadway



2040 METROPOLITAN TRANSPORTATION PLAN

#110 - Billy Graham Parkway

This 1.2 mile widening project extends along Billy Graham Pkwy from Josh Birmingham Pkwy to I-85 in Charlotte. Improvements include widening the existing roadway from four (4) lanes to six (6) lanes and installing a median, in order to improve access to Charlotte-Douglas International Airport.



Project Quick Facts		Project Prioritization	
From	Josh Birmingham Pkwy	Tier I Scores	
To	I-85	Congestion	46
Route Number(s)	--	Safety	50
Length (miles)	1.2	Accessibility	6
Jurisdiction(s)	Charlotte	Tier II Scores	
Improvement Type	Widening	Environmental Justice	0
Facility Classification	Principal Arterial - Other	Natural Resources	3
STI Category ^A	Regional Impact	Historic Resources	9
Number of Existing Travel Lanes	4	Community Resources	6
2011 Daily Traffic Volume (Vehicles per Day)	44,000	System Connectivity	0
Existing Volume to Capacity Ratio	1.1	Benefit-Cost Ratio	1
Horizon Year	2040	Total Score	
	2012 \$ (in \$M)	Future \$ (in \$M)*	121
Cost Estimate (in \$M)	24.2	67.5	

Transportation Improvement Program

(TIP)



Prepared by the Mecklenburg-Union Technical Coordinating Committee

MECKLENBURG-UNION METROPOLITAN PLANNING ORGANIZATION

TYPE OF WORK / ESTIMATED COST IN THOUSANDS / PROJECT BREAK

ROUTE/CITY COUNTY	ID NUMBER	LOCATION / DESCRIPTION (LENGTH)	TOTAL PROJ. COST (THOU)	PRIOR YEARS COST (THOU) SOURCE	5 YEAR WORK PROGRAM										DEVELOPMENTAL PROGRAM				UNFUNDED
					FY 2012	FY 2013	FY 2014	FY 2015	FY 2016	FY 2017	FY 2018	FY 2019	FY 2020	FUTURE YEARS					
INTERSTATE PROJECTS																			
MECKLENBURG	1-4720	I-77, I-277 (EXIT 8) TO THE SOUTH CAROLINA STATE LINE. RESURFACE WITH NOVACHIP. (9.3 MILES)	3093	176	[SPPM]	[col]	[2nd]	[col]	[2nd]	[col]	[2nd]	[col]	[2nd]	[col]	[2nd]	[col]	[2nd]		
PROJECT COMPLETE - GARVEE BOND FUNDING \$2.52 MILLION; PAYBACK FY 2007 - FY 2018																			
MECKLENBURG	1-5317	I-77, MILE MARKER 19.4 TO MILE MARKER 13. PAVEMENT REHABILITATION. (1.6 MILES)	1800		[SPPM]														
MECKLENBURG	1-4733	I-77/SR 5544 (WEST CATAWBA AVENUE) IN CORNELIUS. WOODY INTERCHANGE.	14280	8048	[SP]	[RE]	[BIC]	[C]	[50%										
PLANNING/DESIGN IN PROGRESS - COORDINATE WITH I-476																			
IREDELL MECKLENBURG	1-4750	I-77, SR 5544 (WEST CATAWBA AVENUE - EXIT 28) TO I-40. WIDEN AND RECONSTRUCT ROADWAY. (23 MILES)	506300	500	[NHS]														
A 1-77, SR 5544 (WEST CATAWBA AVENUE - EXIT 28) TO US 21 IN IREDELL COUNTY (EXIT 3)																			
B 1-77, US 21 (EXIT 28) TO NC 119/US 21 (EXIT 42)																			
C 1-77, NC 119/US 21 (EXIT 42) TO I-40																			
PLANNING/DESIGN IN PROGRESS - COORDINATE WITH I-4733																			
MECKLENBURG	1-5368	I-77, MILE MARKER 13 TO MILE MARKER 24. PAVEMENT REHABILITATION. (12 MILES)	8200		[SPPM]														
MECKLENBURG	1-5382	I-77, MILE MARKER 24 TO IREDELL COUNTY LINE. PAVEMENT REHABILITATION. (6.3 MILES)	2300		[SPPM]														
MECKLENBURG	1-5345	I-77, SOUTH CAROLINA LINE TO MILE MARKER 10. PAVEMENT REHABILITATION ON RAMP ONLY. (9.9 MILES)	500		[SPPM]														

State Transportation Improvement Program (STIP)



NCDOT Current STIP
November 2014

MECKLENBURG-UNION METROPOLITAN PLANNING ORGANIZATION

TYPE OF WORK / ESTIMATED COST IN THOUSANDS / PROJECT BREAK

TOTAL PROJ YEARS COST (THOU)	PRIOR COST FUNDING SOURCE	FISCAL YEARS												UNFUNDED FUTURE YEARS	
		5 YEAR WORK PROGRAM				DEVELOPMENTAL PROGRAM									
		FY 2012	FY 2013	FY 2014	FY 2015	FY 2016	FY 2017	FY 2018	FY 2019	FY 2020					
ROADWAY IMPROVEMENT	3693	176													
PROJECT COMPLETE - GARVEE BOND FUNDING \$2.52 MILLION; PAYBACK FY 2007 - FY 2018															
PAVEMENT REPAIR	1800														
CONSTRUCTION (MILES)	14280	804													
PLANNING/DESIGN IN PROGRESS - COORDINATE WITH I-476															
CONSTRUCTION (MILES)	506300	506													
PLANNING/DESIGN IN PROGRESS - COORDINATE WITH I-473															
CONSTRUCTION (MILES)	8200														
PLANNING/DESIGN IN PROGRESS - COORDINATE WITH I-473															
CONSTRUCTION (MILES)	2300														
PLANNING/DESIGN IN PROGRESS - COORDINATE WITH I-473															
CONSTRUCTION (MILES)	500														

MECKLENBURG MARKED 10' PAVEMENT REHABILITATION ON RAMP'S ONLY. (0.3 MILES)

What is the *Transportation Improvement Program (TIP)*?

- Identifies the transportation projects and strategies that CRTPO and NCDOT plan to undertake over the next seven years;
- Is updated at least every two years;
- Is realistic in terms of available funding – concept is known as *fiscal constraint*;
- Conforms with the State Implementation Plan (SIP) for air quality (CRTPO is classified as nonattainment for ozone);
- Is approved by the MPO and the governor; and
- Is incorporated directly, without change, into North Carolina's State Transportation Improvement Program (STIP).

Need TIP Project Information?

What does the project entail? Where is it?

When will construction take place?

How much will it cost?



Need TIP Project Information?

DIVISION 10

NCBOT AMENDED STIP - NOVEMBER 2014

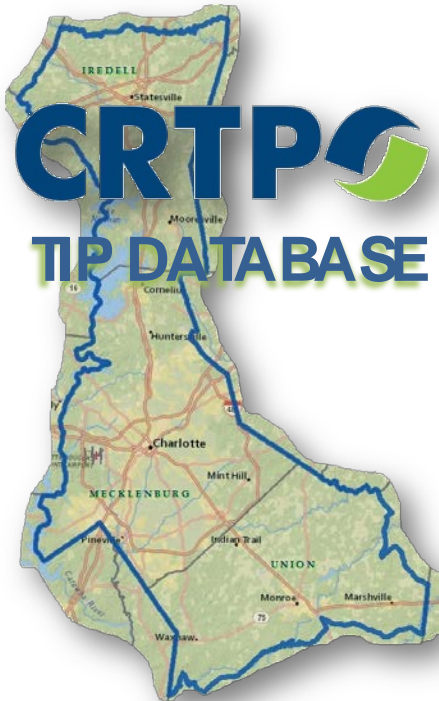
TYPE OF WORK / ESTIMATED COST IN THOUSANDS / PROJECT BREAKS

COUNTY	ROUTE/CITY	NUMBER	LOCATION / DESCRIPTION	LENGTH	TOTAL PROJ COST (THOU)	PRIOR YEARS COST (THOU)	FUNDS	5 YEAR WORK PROGRAM					DEVELOPMENTAL PROGRAM				UNFUNDED
								FY 2012	FY 2013	FY 2014	FY 2015	FY 2016	FY 2017	FY 2018	FY 2019	FY 2020	FUTURE YEARS
INTERSTATE PROJECTS																	
MECKLENBURG	I-485	I-5507	I-485, I-77 SOUTH OF CHARLOTTE TO US 74 (INDEPENDENCE BOULEVARD). ADD ONE EXPRESS LANE IN EACH DIRECTION.	16.6	221000		BOND										
							MOB										
							MOB										
MECKLENBURG	I-485	I-5383	I-485, I-77 TO MILE MARKER 3. PAVEMENT REHABILITATION.	6.0	3200		IMPM										
MECKLENBURG	I-485	I-5397	I-485, MILE MARKER 33 TO MILE MARKER 37. PAVEMENT REHABILITATION.	10.0	14900		IMPM										
RURAL PROJECTS																	
MECKLENBURG	I-485	R-4902*	I-485, I-77 SOUTH OF CHARLOTTE TO REA ROAD. WIDEN TO SIX LANES.	6.6	100614	99864	CMAQ										
MECKLENBURG	I-485	R-2248*	I-485 (CHARLOTTE WESTERN OUTER LOOP), WEST OF I-77 TO I-85 NORTH. FREEWAY ON NEW LOCATION.	28.0	770381	721709	NHS										
							CMAQ										
							T										
							T										
<p>UNDER CONSTRUCTION - DESIGN/BUILD PROJECT</p> <p>A I-485, WEST OF I-77 SOUTH TO US 29-74 - COMPLETE</p> <p>BA I-485, NORTH OF US 29/US 74 (MILKINSON BOULEVARD) TO NORTH OF I-85 - COMPLETE</p> <p>BB I-485, NORTH OF I-85 TO NORTH OF NC 27 - COMPLETE</p> <p>C I-485, NORTH OF NC 27 (MOUNT HOLLY ROAD) TO EAST OF SR 2042 (OAKDALE ROAD) - COMPLETE</p> <p>D I-485, EAST OF SR 2042 (OAKDALE ROAD) TO EAST OF NC 115 (OLD STATESVILLE ROAD) - COMPLETE</p> <p>E I-485, EAST OF NC 115 (OLD STATESVILLE ROAD) TO I-85 NORTH - UNDER CONSTRUCTION AS DESIGN-BUILD PROJECT</p> <p>EA ITS FOR R-2248 E</p> <p>EB EDINMEADOW DRIVE NEPA STUDY</p> <p>F I-485, WEST OF I-77 TO ARROWOOD ROAD-BROWN GRIER ROAD - COMPLETE</p> <p>G I-485 INTERCHANGE WITH SR 2042 (OAKDALE ROAD)</p> <p>H I-485 INTERCHANGE WITH SR 1148 (GARRISON ROAD) - UNDER CONSTRUCTION</p>																	
MECKLENBURG	I-485	R-0211*	I-485 (CHARLOTTE SOUTHERN OUTER LOOP), WEST OF I-77 TO US 74. MULTI-LANE FREEWAY ON NEW LOCATION.	16.6	276431	256328	NHS										
							NHS										
							NHS										
<p>GARVEE BOND FUNDING \$50 MILLION; CONSTRUCTION - PAYBACK FY 2010 - FY 2021</p> <p>EC I-485/SR 3468 (WEDDINGTON ROAD). CONSTRUCT INTERCHANGE</p>																	
MECKLENBURG	I-485	R-2123*	I-485 (CHARLOTTE EASTERN OUTER LOOP), US 74 EAST (INDEPENDENCE BOULEVARD) TO I-85 NORTH. CONSTRUCT FREEWAY ON NEW LOCATION.	18.8	341488	297016	CMAQ										
							NHP										
							CE										
							CG										
<p>PART COMPLETE - REMAINDER UNFUNDED LOOP PROJECT</p> <p>CE I-485/I-85 INTERCHANGE</p> <p>CG SEPARATE ITS CONTRACT FOR R-2123 CE</p>																	
<p>PART COMPLETE - GARVEE BOND FUNDING \$50 MILLION; CONSTRUCTION - PAYBACK FY 2010 - FY 2021</p>																	

* INDICATES INTRASTATE PROJECT

COST AND SCHEDULES ARE PRELIMINARY AND SUBJECT TO SIGNIFICANT CHANGE AS MORE INFORMATION BECOMES AVAILABLE

CRTPO 2012-2018 TIP Database



CRTPO has developed a searchable on-line database to more effectively convey current mapping and project information for proposed TIP projects.

<http://tip.crtpo.org>