

**2019-124: Gvest Capital, LLC**

**Current Zoning** O-6(CD) (Office, Conditional), R-17MF (Multi-Family Residential)

**Requested Zoning** UR-2(CD) (Urban Residential, Conditional)

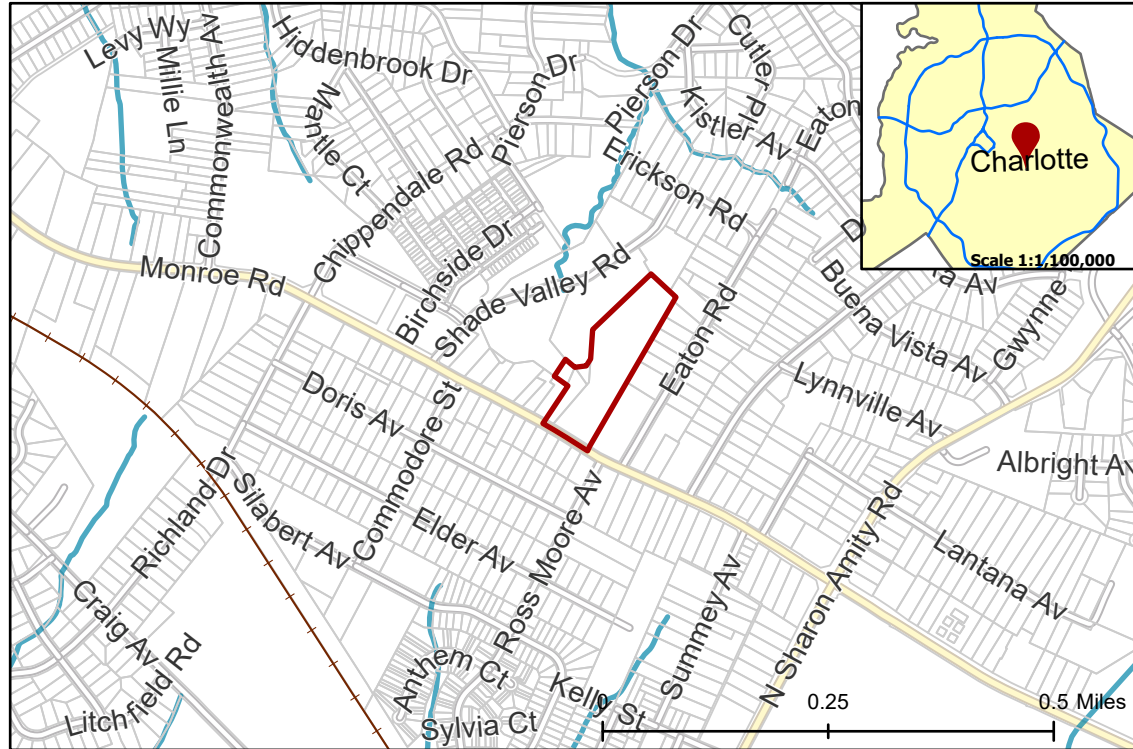
Approximately 5.86 acres

**Rezoning Map**



**CHARLOTTE**  
PLANNING, DESIGN  
& DEVELOPMENT

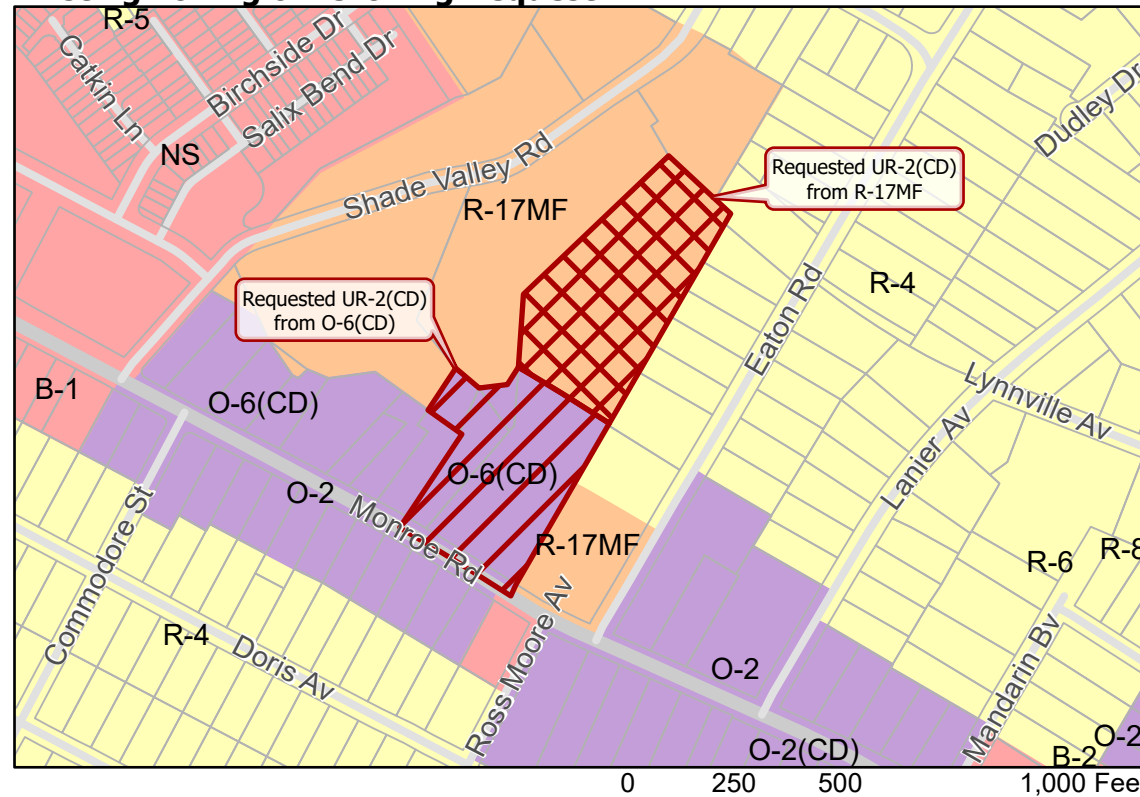
**Location of Requested Rezoning**



- Inside City Limits
- Parcel
- Railway
- Streams
- City Council District**
- 5-Matt Newton



**Existing Zoning & Rezoning Request**



- Requested UR-2(CD) from O-6(CD)
- Requested UR-2(CD) from R-17MF

**Zoning Classification**

- Single Family
- Multi-Family
- Office
- Business



Map Created 9/13/2019