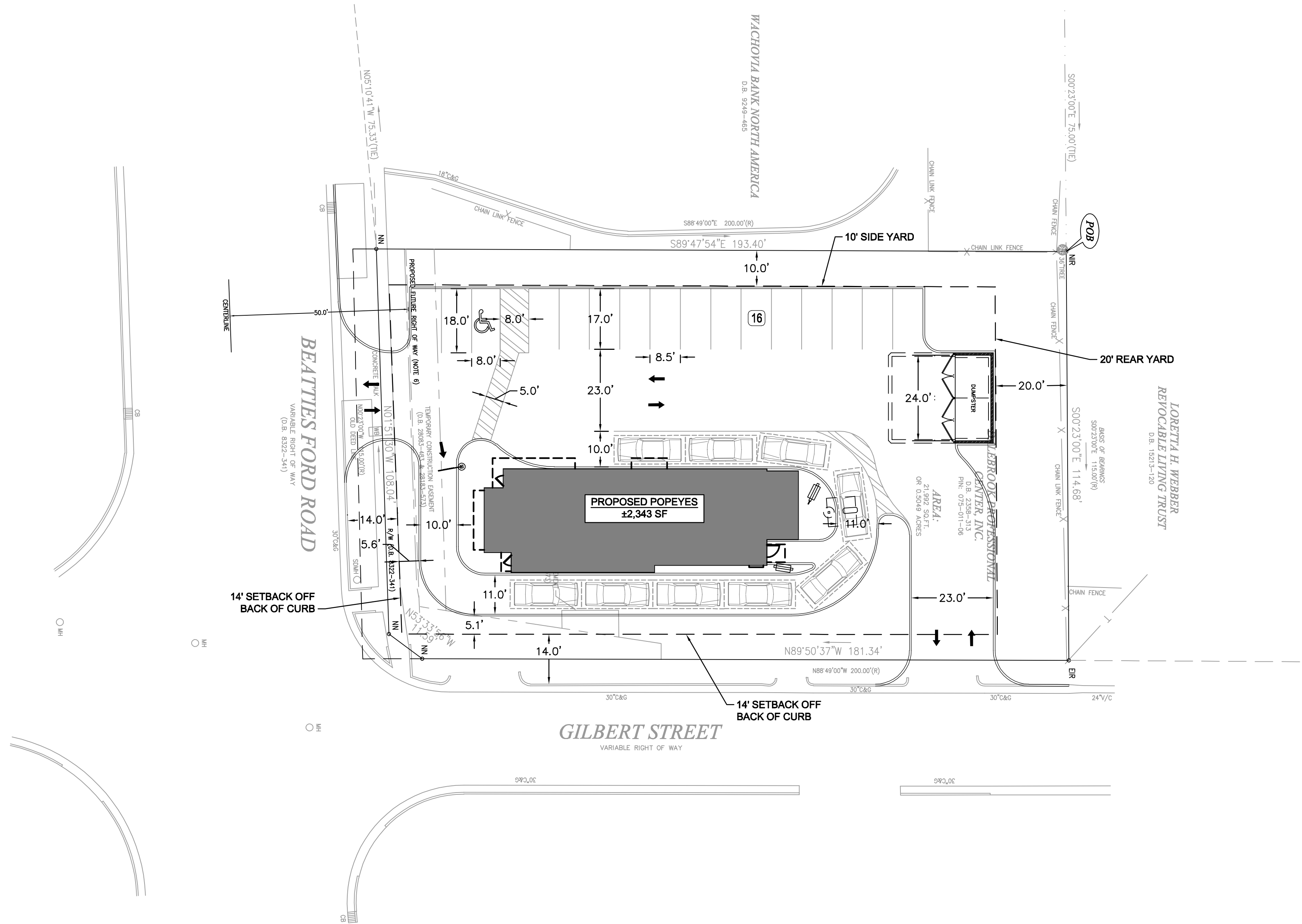


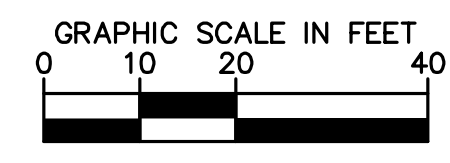
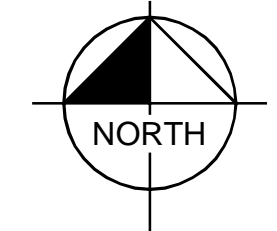
Plotted By: Broughs, Cole Sheet Set: K1a Layout: REZONING PLAN December 21, 2018 01:16:05pm K:\CHL\_PROJ\013973 Leblon\_Develop\008 Beatties\_Ford\02 - DWG\Rezoning\Rezoning\_Plan-000.dwg

This document, together with the concepts and designs presented herein, is intended only for the specific purpose and client for which it was prepared. Release of and improper reliance on this document without written authorization and adaptation by Kimley-Horn and Associates, Inc. shall be without liability to Kimley-Horn and Associates, Inc.



VICINITY MAP  
SCALE: NTS

DEVELOPMENT DATA TABLE	
SITE ACREAGE	0.50 ACRES
TAX PARCELS INCLUDED IN REZONING	075-011-06
EXISTING ZONING	B-1
PROPOSED ZONING	B-1 (NS)
NUMBER OF RESIDENTIAL UNITS	N/A
RESIDENTIAL DENSITY	N/A
SQUARE FOOTAGE OF NON-RESIDENTIAL USES	2,343 SF
FLOOR AREA RATIO	0.11
MAXIMUM BUILDING HEIGHT	21' - 10"
MAXIMUM NUMBER OF BUILDINGS	1
NUMBER OF PARKING SPACES	16 (1 H/C)
AMOUNT OF OPEN SPACE	0.16 AC (7,015 SF)



POPEYES (BEATTIES FORD)  
PREPARED FOR  
LEBLON

REZONING PLAN

K1a PROJECT  
013973000

LICENSED PROFESSIONAL

**Kimley»Horn**

© 2018 KIMLEY-HORN AND ASSOCIATES, INC.  
200 SOUTH TRYON ST., SUITE 200, CHARLOTTE, NC 28202  
WWW.KIMLEY-HORN.COM  
INC LICENSE #=0102

No.	REVISIONS	DATE	BY

SHEET NUMBER  
1

CITY OF CHARLOTTE NC