

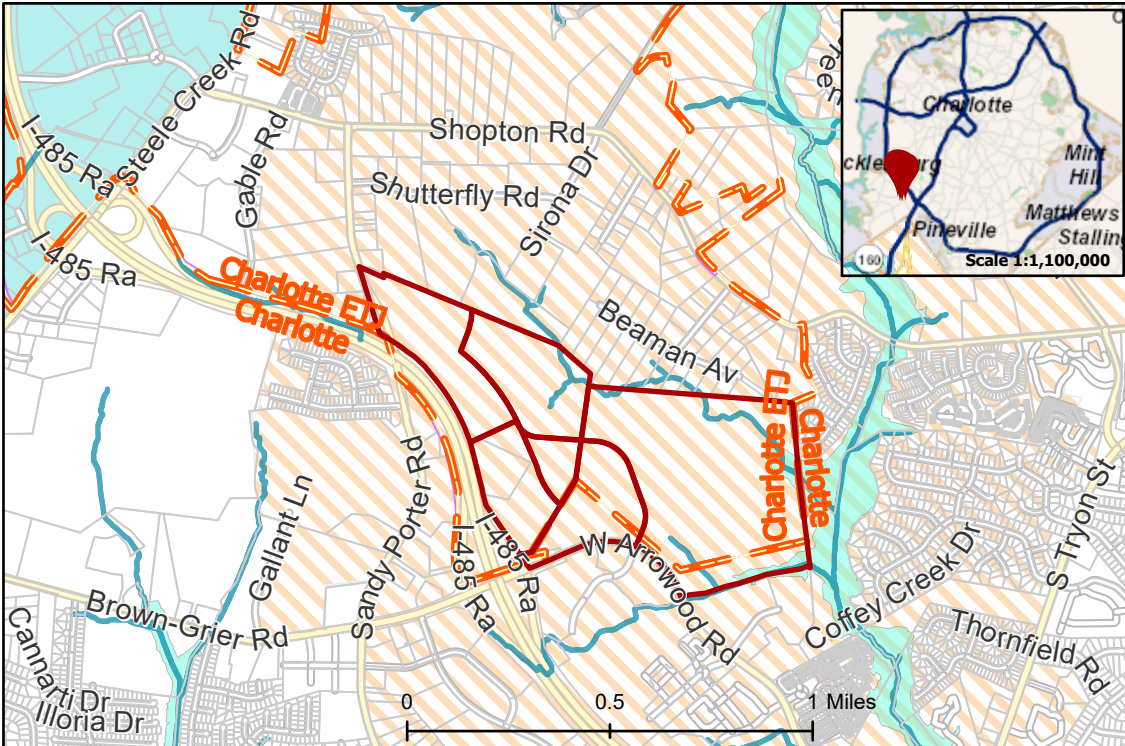
2018-121: Steele Creek LLC

Current Zoning I-1(CD) AIR (Light Industrial, Conditional) O-1(CD) AIR (Office, Conditional) R-3 AIR (Single Family Residential) all within Airport Noise Overlay

Requested Zoning MUDD-O AIR (Mixed Use Development District, Optional) I-1(CD) AIR (Light Industrial, Conditional) I-1(CD)SPA AIR (Light Industrial, Conditional, Site Plan Amendment) all within Airport Noise Overlay and 5 Year Vested Rights.

Approximately 264.93 acres

Location of Requested Rezoning



Rezoning Map



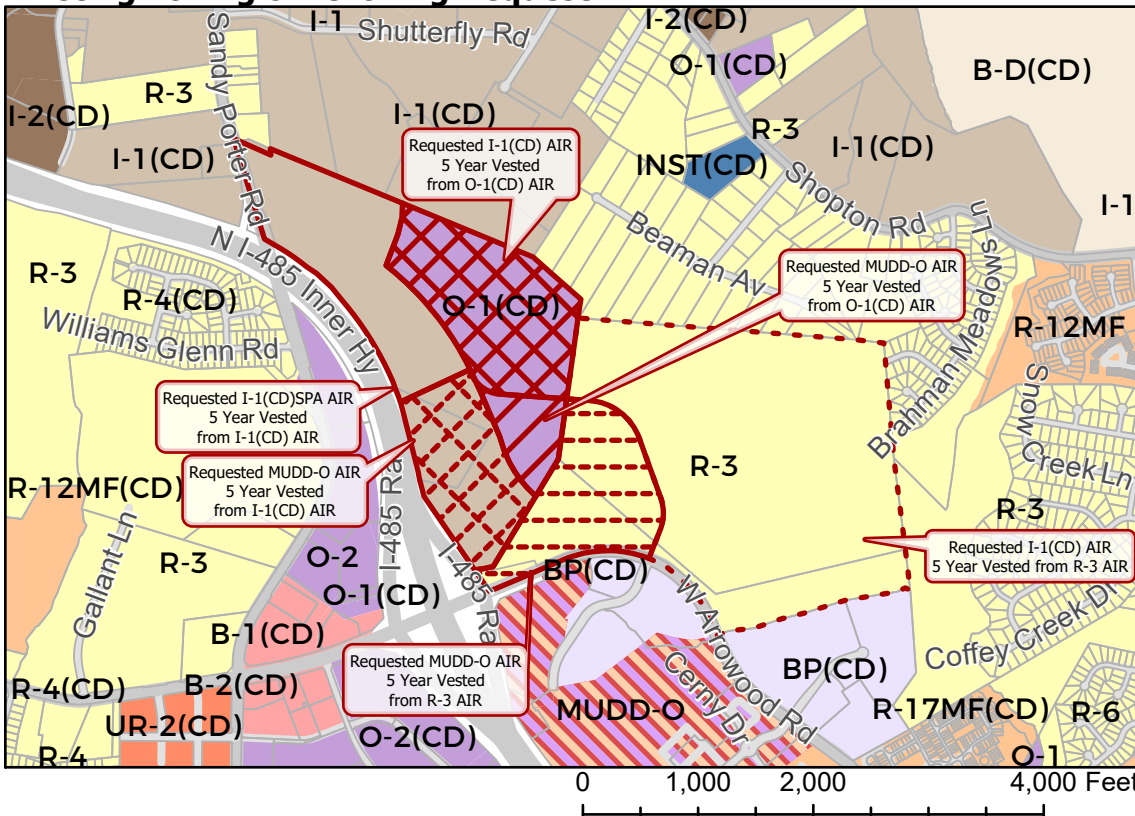
- 2018-121
- Inside & Outside City Limits
- Parcel
- Streams
- FEMA Flood Plain
- Airport Noise Overlay
- Watershed Overlay
 - Lower Lake Wylie - Protected Area

City Council District

- 3-LaWana Mayfield



Existing Zoning & Rezoning Request



- Requested I-1(CD)SPA AIR 5 Year Vested from I-1(CD) AIR
- Requested I-1(CD) AIR 5 Year Vested from O-1(CD) AIR
- Requested I-1(CD) AIR 5 Year Vested from R-3 AIR
- Requested MUDD-O AIR 5 Year Vested from I-1(CD) AIR
- Requested MUDD-O AIR 5 Year Vested from O-1(CD) AIR
- Requested MUDD-O AIR 5 Year Vested from R-3 AIR

Zoning Classification

- Single Family
- Multi-Family
- Urban Residential
- Institutional
- Office
- Business Park
- Business
- Commercial Center
- Business-Distribution
- Light Industrial
- General Industrial
- Mixed Use



Map Created 10/2/2018