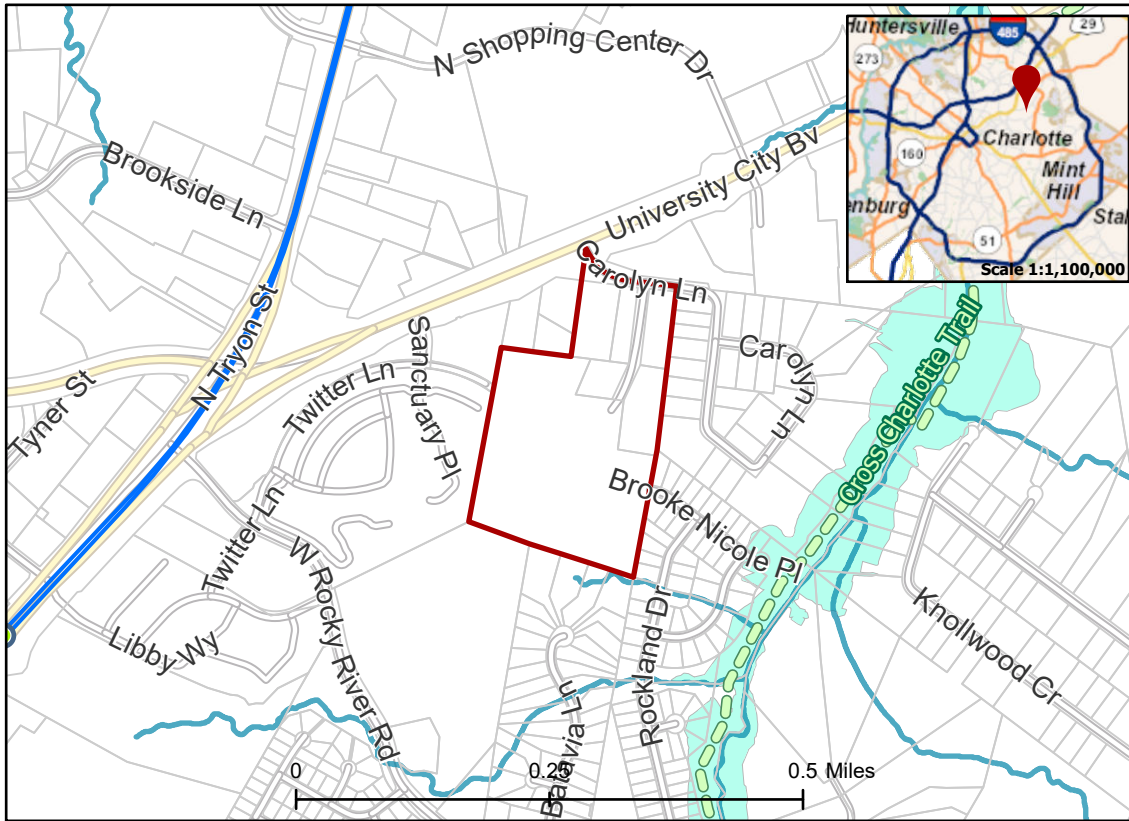


2018-076: Fountain Residential Partners
Current Zoning R-3(Single Family Residential)
Requested Zoning UR-2(CD)(Urban Residential, Conditional)
 Approximately 25.47 acres

Rezoning Map



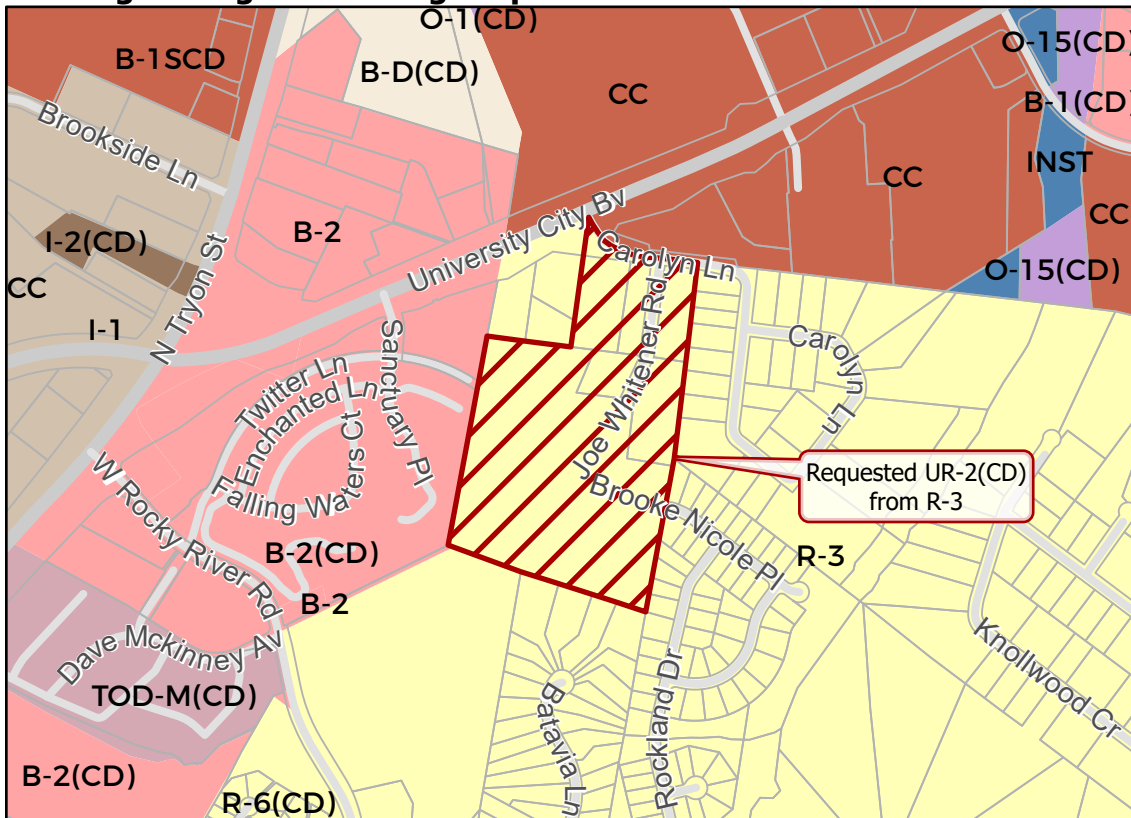
Location of Requested Rezoning



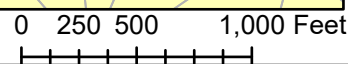
- 2018-076
- Inside City Limits
- Parcel
- LYNX Blue Line Station
- Cross Charlotte Trail
- LYNX Blue Line
- Streams
- FEMA Flood Plain
- City Council District
- 4-Gregory A. Phipps



Existing Zoning & Rezoning Request



- Requested UR-2(CD) from R-3
- Zoning Classification**
- Single Family
 - Institutional
 - Office
 - Business
 - Commercial Center
 - Business-Distribution
 - Light Industrial
 - General Industrial
 - Transit-Oriented



Map Created 6/12/2018